

BENCH MARK: (Construction B.M.)
 A1-17; O.C.F.C.D. Datum; Chisled "5" on northeast corner of bridge on North Frontage Road of Santa Ana Freeway over Coyote Creek Channel marked "T.B. M. 22-J Elev. 67.74" (Whittier Quad)
 L.A. Co. Rd. Dept. Datum ELEV. 67.00

BENCH MARK:
 Standard U.S.G.S. Disk stamped "62-1914 63733" Located on west side on north concrete headwall on north side of Southern Pacific R.R. R/W 20'± east of E. of Valley View Avenue.
 ELEV. 60.431

PRIVATE ENGINEER'S NOTICE TO CONTRACTOR

The existence and location of any underground utility pipes or structures shown on these plans are obtained by a search of the available records. To the best of our knowledge there are no existing utilities or structures except as shown on these plans. The Contractor is required to take due precautionary measures to protect the utility lines or structures shown and any other lines and structures not of record or not shown on these plans.

D. J. Anderson
 R.C.E. No. 13054

LA MIRADA BLDG. DIST. NO. 4.08

- NOTES:**
- PROVIDE STAKES ON THE PROPERTY LINE OR PROPERTY LINES PRODUCED AT RIGHT ANGLES TO THE SEWER LINE AT THE CENTER LINE OF EACH MANHOLE.
 - NO REPRESENTATIVE OF THE CITY ENGINEER WILL SURVEY OR LAY OUT ANY PORTION OF THE WORK.
 - THE OWNER OR HIS AUTHORIZED REPRESENTATIVE SHALL FURNISH THE CITY ENGINEER WITH GRADE SHEETS AND STATIONING FOR ALL HOUSE LATERALS AND Y BRANCHES AND SHALL PROVIDE STAKES FOR THEM AT THEIR PROPER LOCATIONS WITH STATIONING PLAINLY MARKED. ANY CHANGE IN LOCATION SHALL BE REQUESTED IN WRITING BY THE OWNER OR HIS REPRESENTATIVE.
 - THE PRIVATE ENGINEER SHALL FURNISH THE HOUSE LATERAL DEPTH AT THE PROPERTY LINE BELOW THE TOP OF CURB ELEVATION FOR EACH HOUSE LATERAL ON THE GRADE SHEET.
 - NO REVISIONS SHALL BE MADE IN THESE PLANS WITHOUT THE APPROVAL OF THE CITY ENGINEER.
 - USE STANDARD MANHOLE FRAMES AND COVERS, S-117, EXCEPT AS NOTED.
 - USE EXTRA STRENGTH PIPE 12" DIA. 24" DEPT.
 - USE CONCRETE JOINTS OR "WEDGE-LOCK" OR "SPEED-SEAL" FOR ALL T.C.P. JOINTS PER SPECS, SECS. 34 & 48.
 - RESURFACE ALL TRENCH WITHIN PAVED AREA TO MEET L.A. COUNTY ROAD DEPT. OR CALIF. STATE HIGHWAY REQUIREMENTS IN ACCORDANCE WITH PERMITS.
 - ENCASE FOUR FEET OF SEWER AT POINTS OF INTERFERENCE WITH POLES, CASE III, S-172.
 - HOUSE LATERALS TO BE CONSTRUCTED WITH INVERTS AT PROPERTY LINE. FIRST BRICK CURB GRADE SUBJECT AS NOTED.
 - ALL STRUCTURES SHALL BE BRICK SEWER STRUCTURES, S-104, EXCEPT AS NOTED.
 - FOR ALLOWABLE LEAKAGE TEST USE FORMULA NO. 1, SPECS, SEC. 54.
 - MANHOLE TOPS IN UNIMPROVED RIGHTS-OF-WAY TO BE SIX INCHES ABOVE FINISHED GRADE.
 - THE CONTRACTOR SHALL NOTIFY THE CONSTRUCTION DIVISION BY TELEPHONE, MADISON 5-4747, EXT. 8152 AT LEAST TWENTY-FOUR HOURS BEFORE STARTING ANY WORK UNDER THIS CONTRACT.
 - Standard specifications dated October 23, 1961 apply in the construction of this project.
 - Ultimate strength of concrete (28 days) 3000 p.s.i. minimum.
 - Use intermediate grade reinforcing bars (20,000 p.s.i.)
 - End steel 2" clear of openings and edges
 - Backfilling around siphon structure to be compacted to not less than 90% compaction at optimum moisture content.
 - All epoxy resin compound shall be Epibond 157 with hardner 347 (Future Plastic Incorporated) or equal.
 - In the fabrication of elbows, all corners and sharp edges shall be rounded to provide a smooth transition.
 - Contractor shall maintain sewer service at all times.

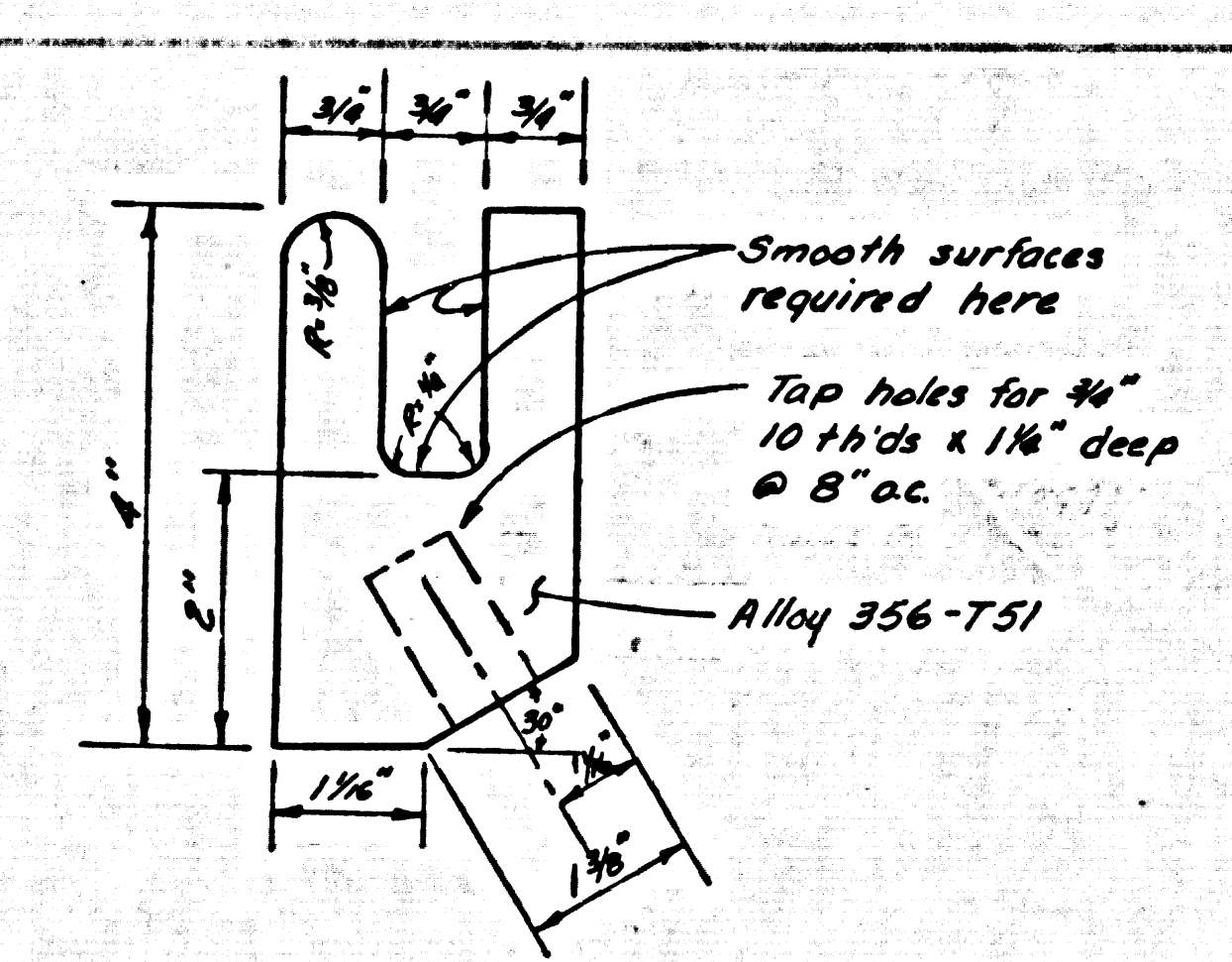
PROFILE ALIGNMENT AND GRADE OF P.C. 6168
SANITARY SEWERS PAGE 1
 CONSTRUCTED IN
PHOEBE AVENUE

PRIVATE CONTRACT NO. 6168

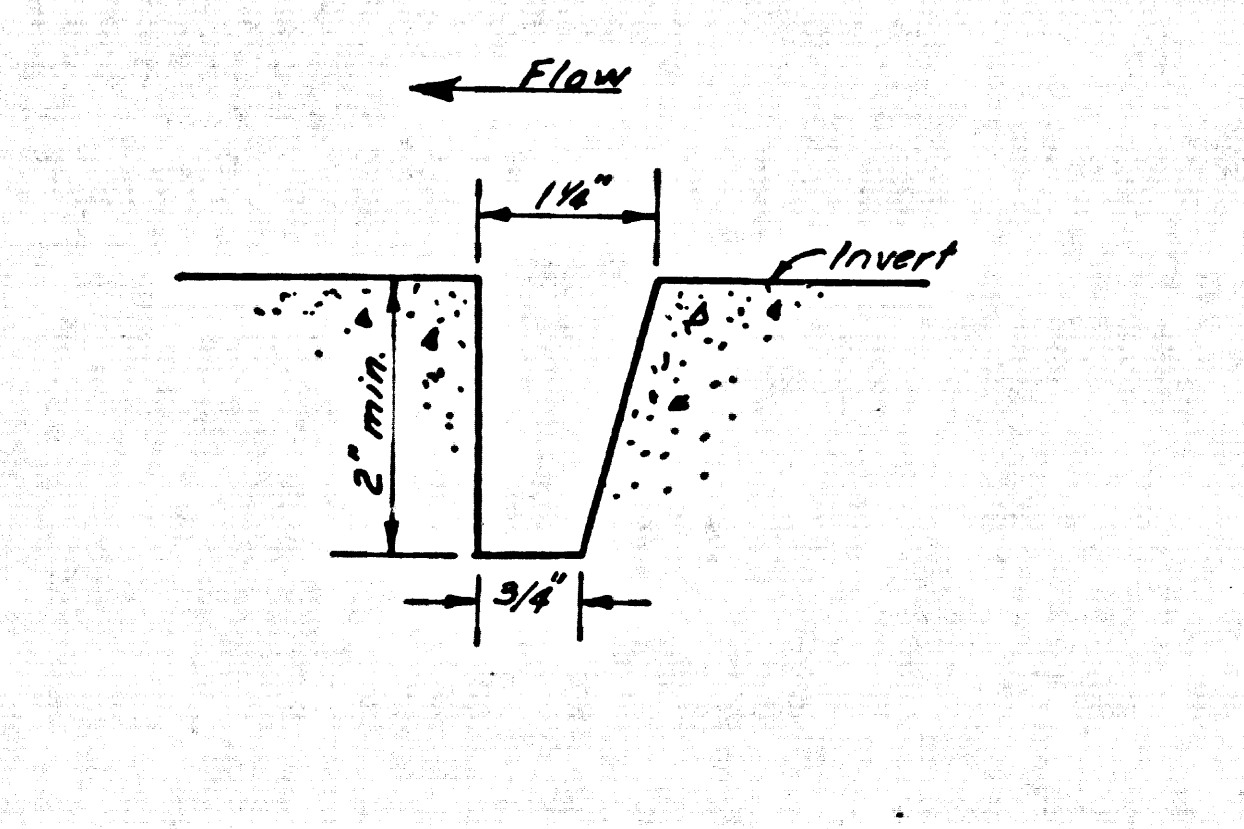
W.S. 34
 4 SHEETS; 4 PAGES
 SCALE: As Shown MARCH, 1962
 PREPARED IN THE OFFICES OF
DUTCH HOLZHAUER AND ASSOCIATES
 7 W. Hellman Avenue, Alhambra, California CU 5-9251
 By: *D. J. Anderson*
 REG. C. E. NO. 13054
 FOR LEGEND SEE PLAN NO. S-A-64

NOTE:
 GRADES TO WHICH THIS IMPROVEMENT IS TO BE CONSTRUCTED ARE SHOWN ON PLANS AND PROFILES. GRADE POINTS FOR TOP OF CURBS, CENTER LINE OF STREETS, OR CENTER LINE OF ALLEYS ARE SHOWN BY CIRCLES ON PROFILES. AT ALL POINTS BETWEEN DESIGNATED POINTS THE GRADE SHALL BE ESTABLISHED SO AS TO CONFORM TO A STRAIGHT LINE DRAWN BETWEEN SAID DESIGNATED POINTS.
 ELEVATIONS ARE IN FEET ABOVE U.S.C. & G.S. SEA LEVEL DATUM OF 1929.
 THIS DRAWING AND THE DATA HEREON ARE HEREBY MADE A PART OF THE SPECIFICATIONS.
 WORK SHALL BE CONSTRUCTED ACCORDING TO SPECIFICATIONS ON FILE IN THE OFFICE OF THE CITY ENGINEER AND SHALL BE PROSECUTED ONLY IN THE PRESENCE OF THE CITY ENGINEER.
 BEFORE WORK CAN BE STARTED, THE CONTRACTOR MUST AND MAKE A DEPOSIT WITH THE CITY ENGINEER AND RECORD PLANS. APPROVAL OF THIS PLAN BY THE CITY OF LA MIRADA DOES NOT CONSTITUTE A REPRESENTATION AS TO THE ACCURACY OF THE LOCATION OF OR THE EXISTENCE OR NON-EXISTENCE OF ANY UNDERGROUND UTILITY PIPE, OR STRUCTURE WITHIN THE LIMITS OF THIS PROJECT. THIS NOTE APPLIES TO ALL PAGES.
 IF WORK IS TO BE DONE IN A STATE HIGHWAY, A PERMIT MUST BE OBTAINED FROM THE STATE OF CALIFORNIA, DIVISION OF HIGHWAYS, 128 SOUTH SPRING STREET.
 (CITY OF LA MIRADA, CALIFORNIA)

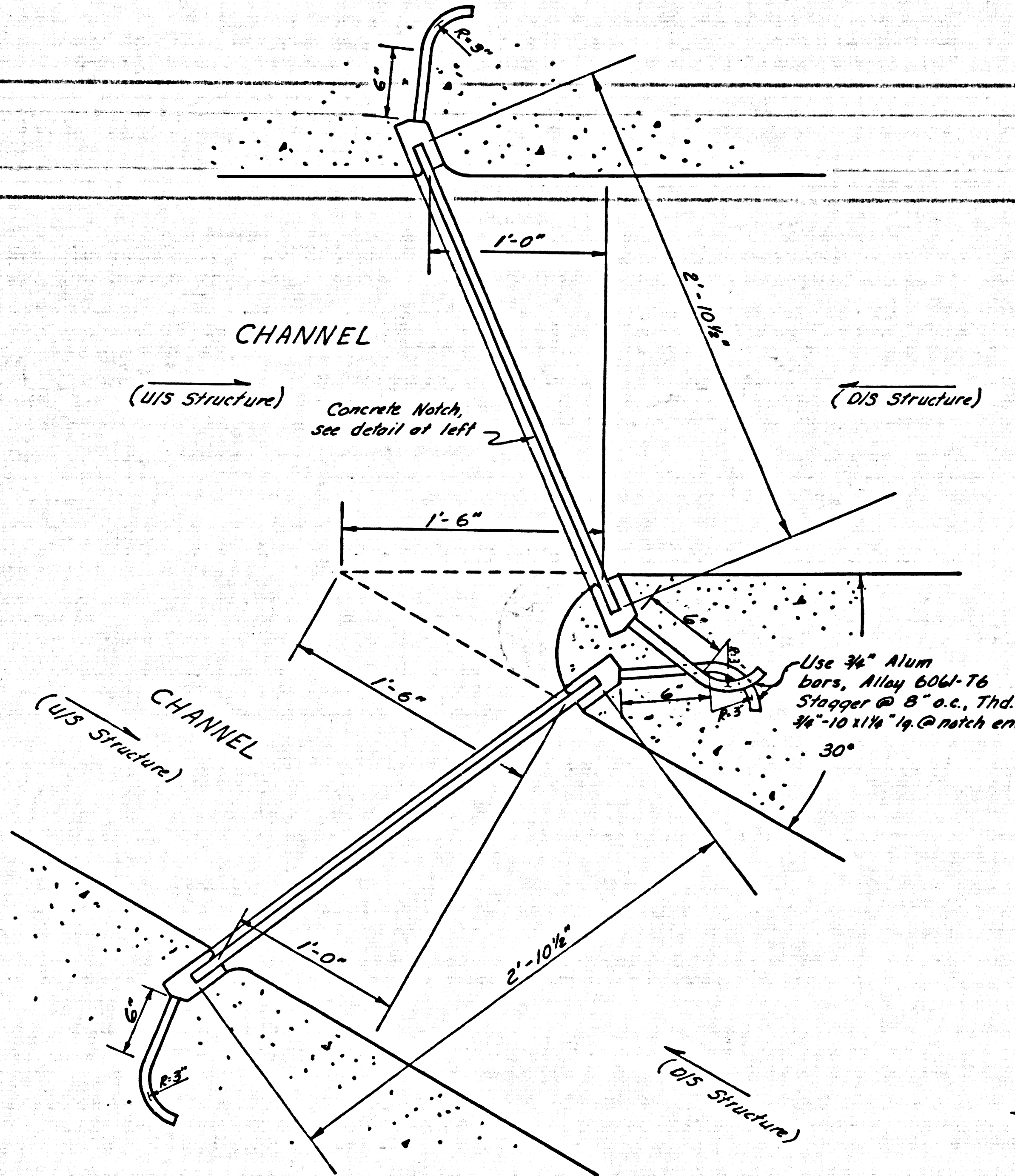
APPROVED, JOHN A. LAMBIE, (CITY) ENGINEER
 APPROVED, *D. J. Anderson*, REGISTERED PROFESSIONAL ENGINEER
 BY: *Richard S. Valero*, ASS'T. SANITATION ENGINEER
 CHECKED BY: *Henry Lee*, OFFICE OF CITY ENGINEER, REG. C. E. NO. 10443



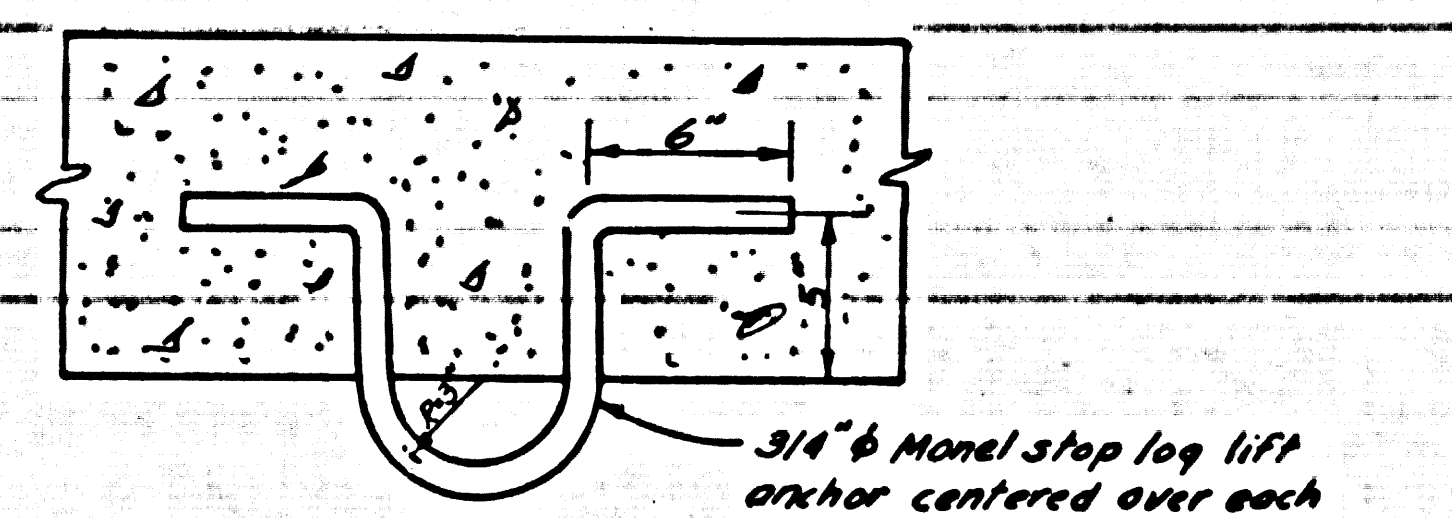
CAST ALUMINUM NOTCH DETAIL
 HALF SCALE



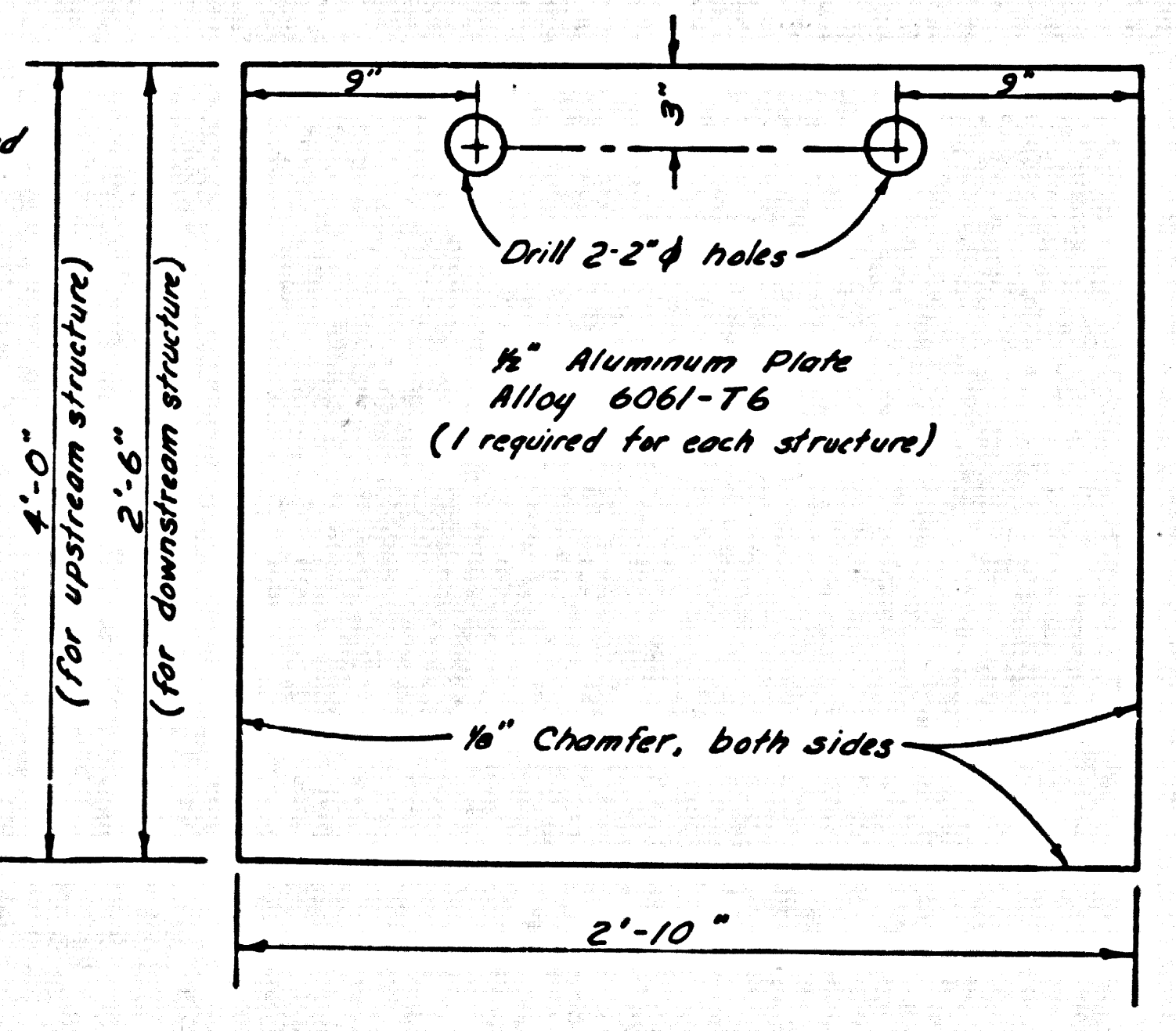
CONCRETE NOTCH DETAIL
 HALF SCALE



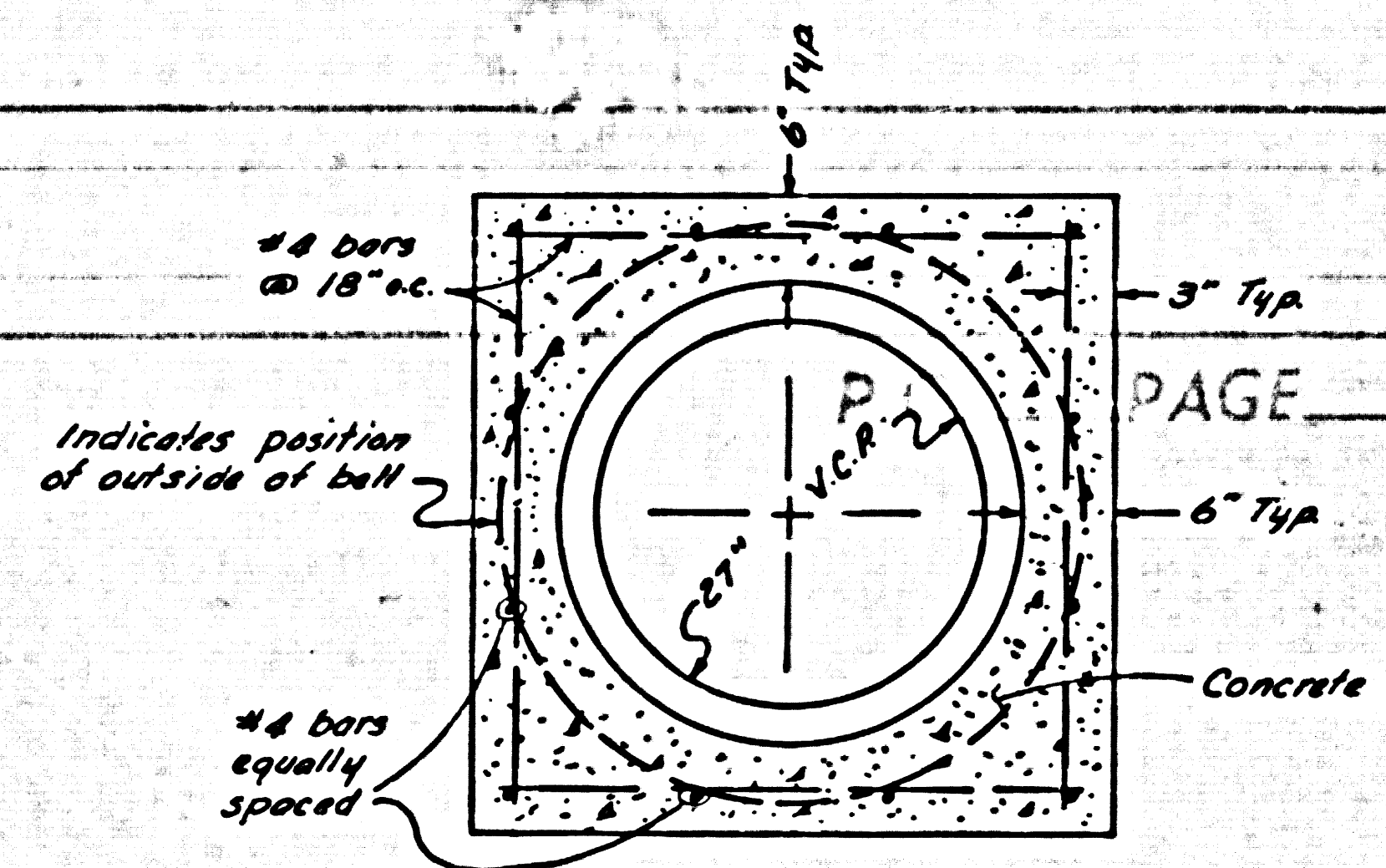
STOP LOG NOTCH DETAIL
 SCALE: 1 1/2" = 1'-0"



LIFT ANCHOR DETAIL
 SCALE: 1 1/2" = 1'-0"



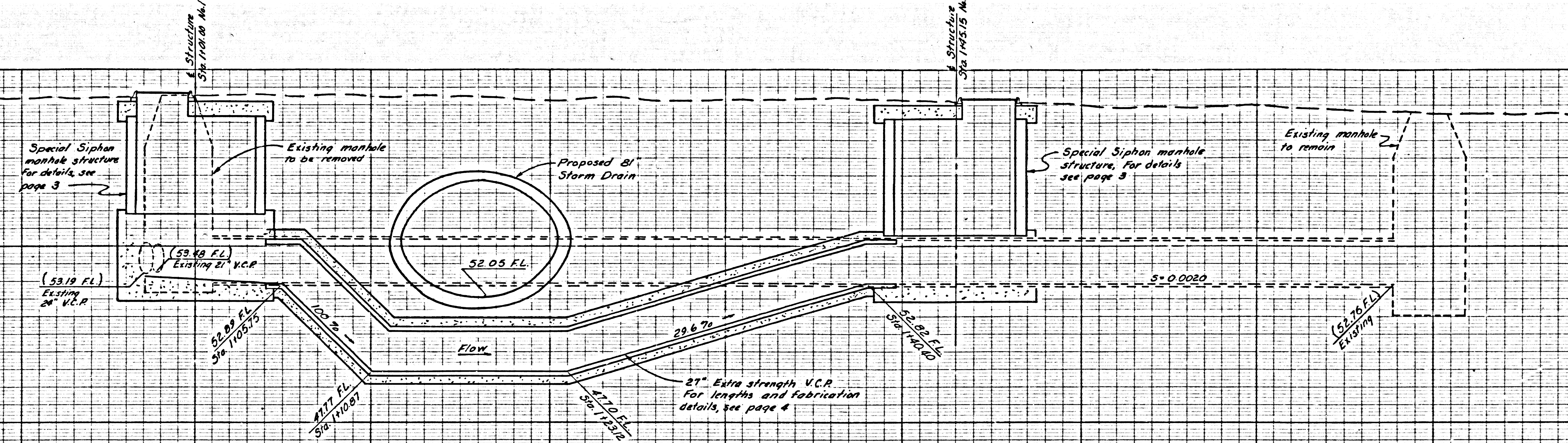
ALUMINUM STOP LOG
 SCALE: 1 1/2" = 1'-0"



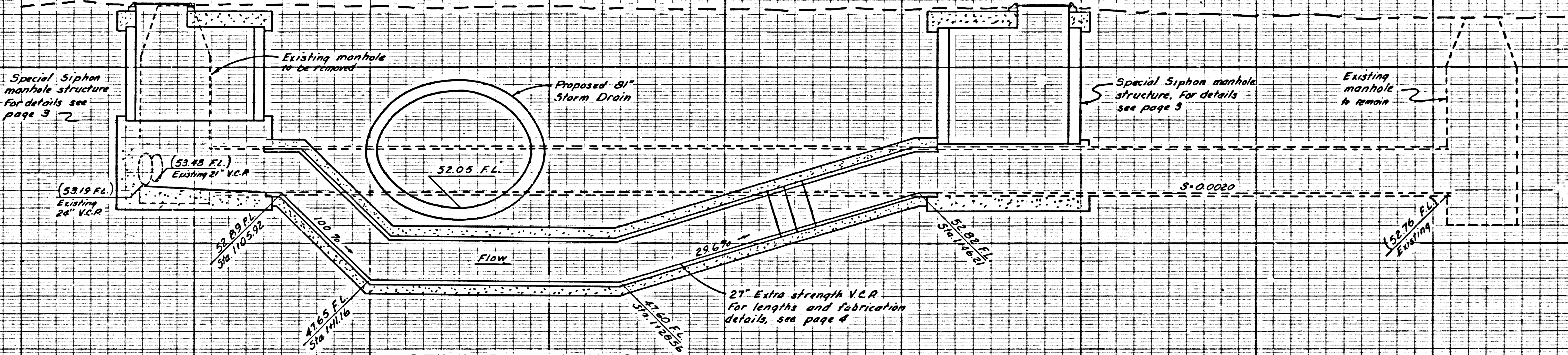
CONCRETE ENCASUREMENT DETAIL
 SCALE: 3/4" = 1'-0"

60
55
50
45
60
55
50
45
60
55
50
45

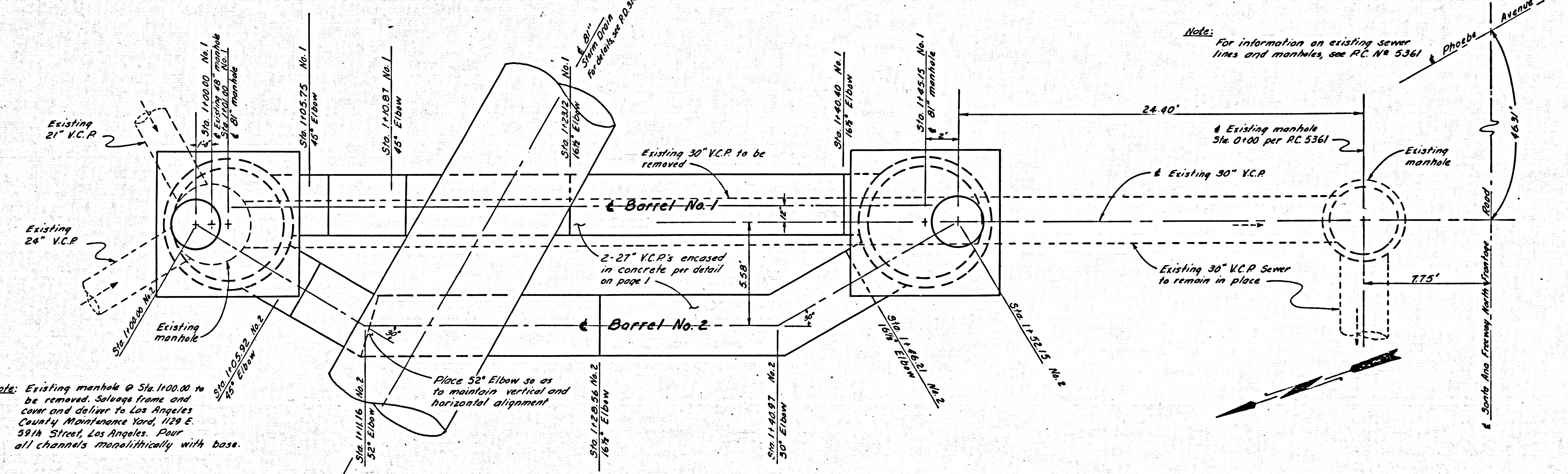
60
55
50
45
60
55
50
45
60
55
50
45



PROFILE - BARREL No. 1
SCALE: 1" = 4'



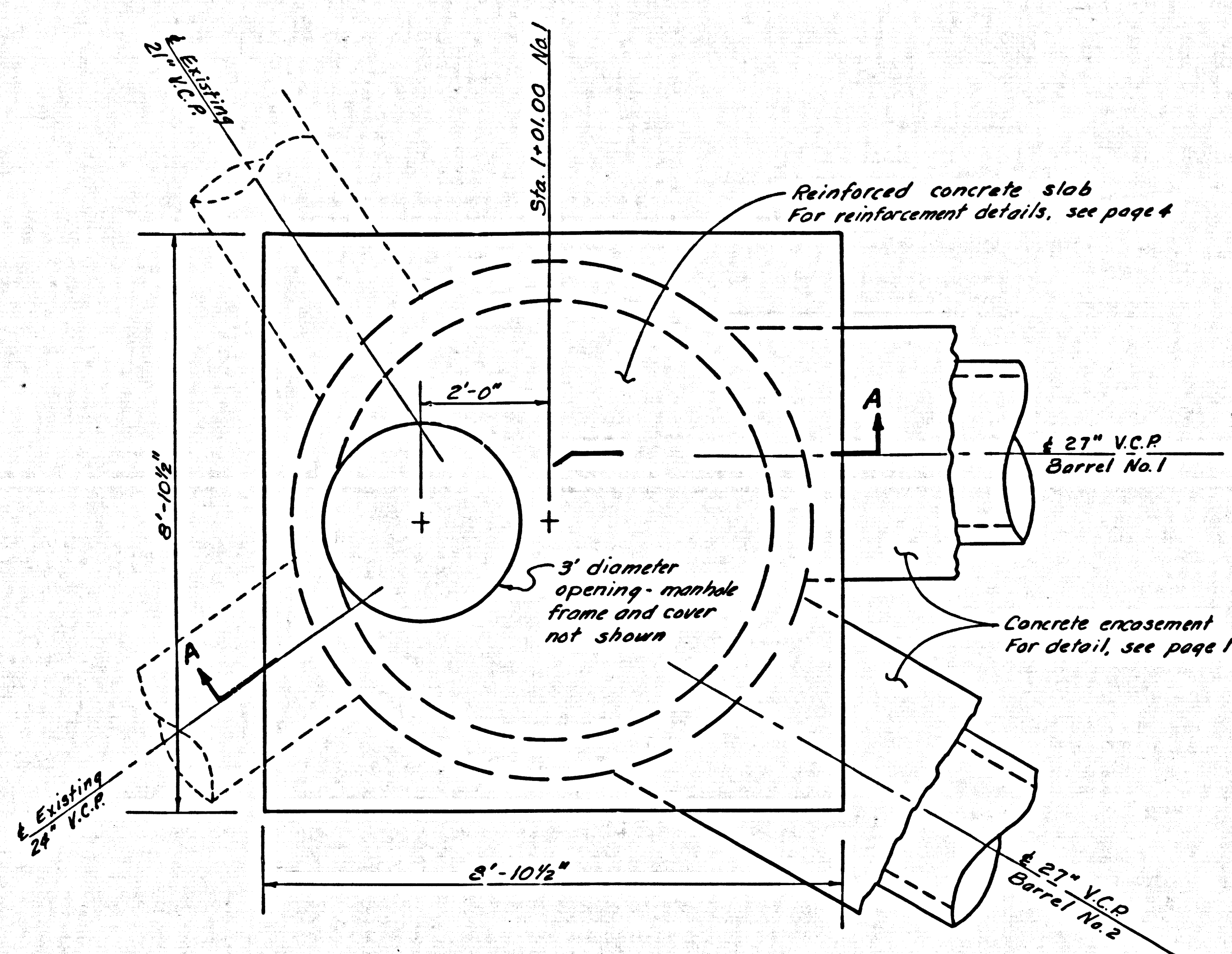
PROFILE - BARREL No. 2
SCALE: 1" = 4'



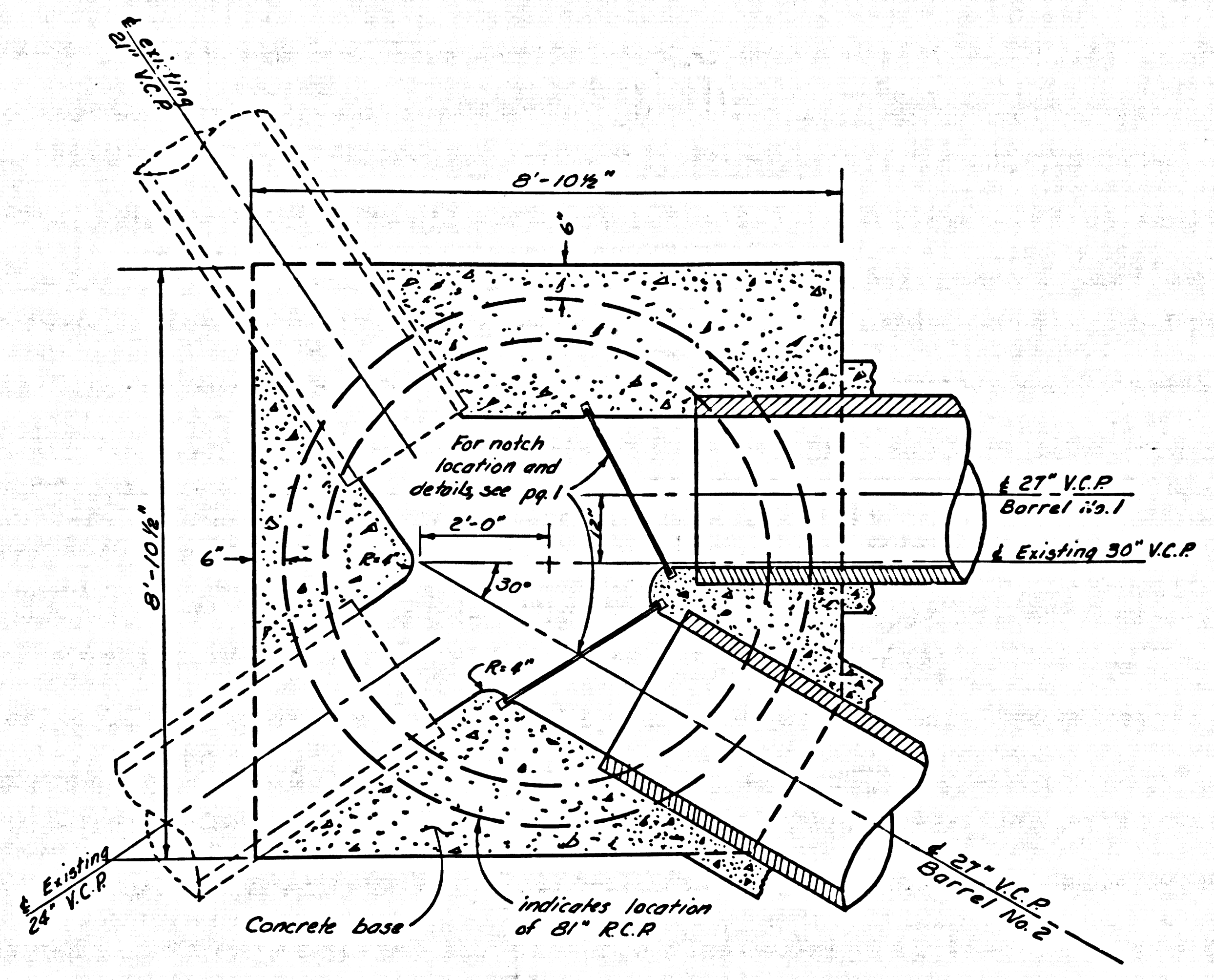
PLAN
SCALE: 1" = 4'

Note: Existing manhole @ Sta 1100.00 to be removed. Salvage frame and cover and deliver to Los Angeles County Maintenance Yard, 1129 E. 59th Street, Los Angeles. Pour all channels monolithically with base.

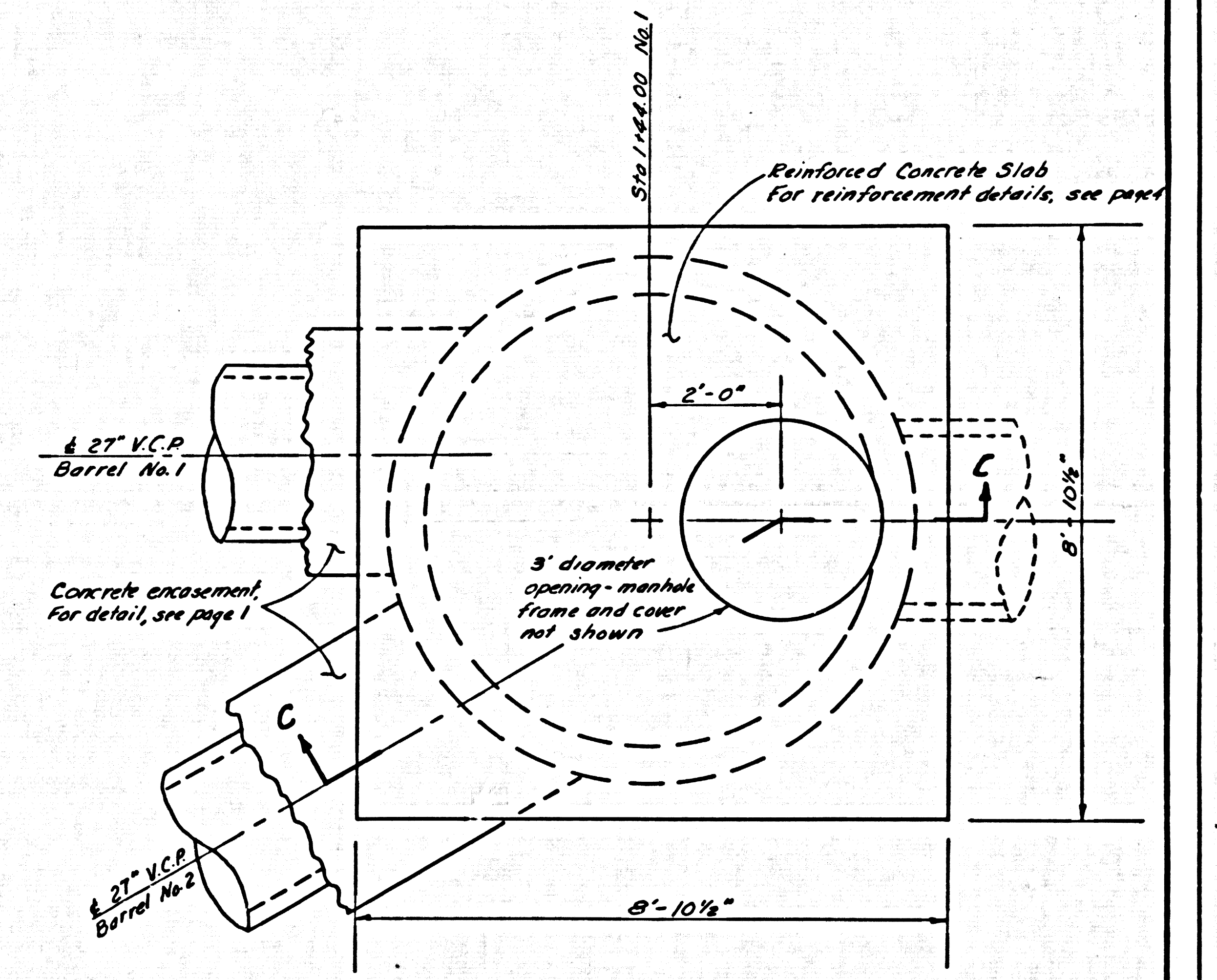
Note: For information on existing sewer lines and manholes, see P.C. No. 5361



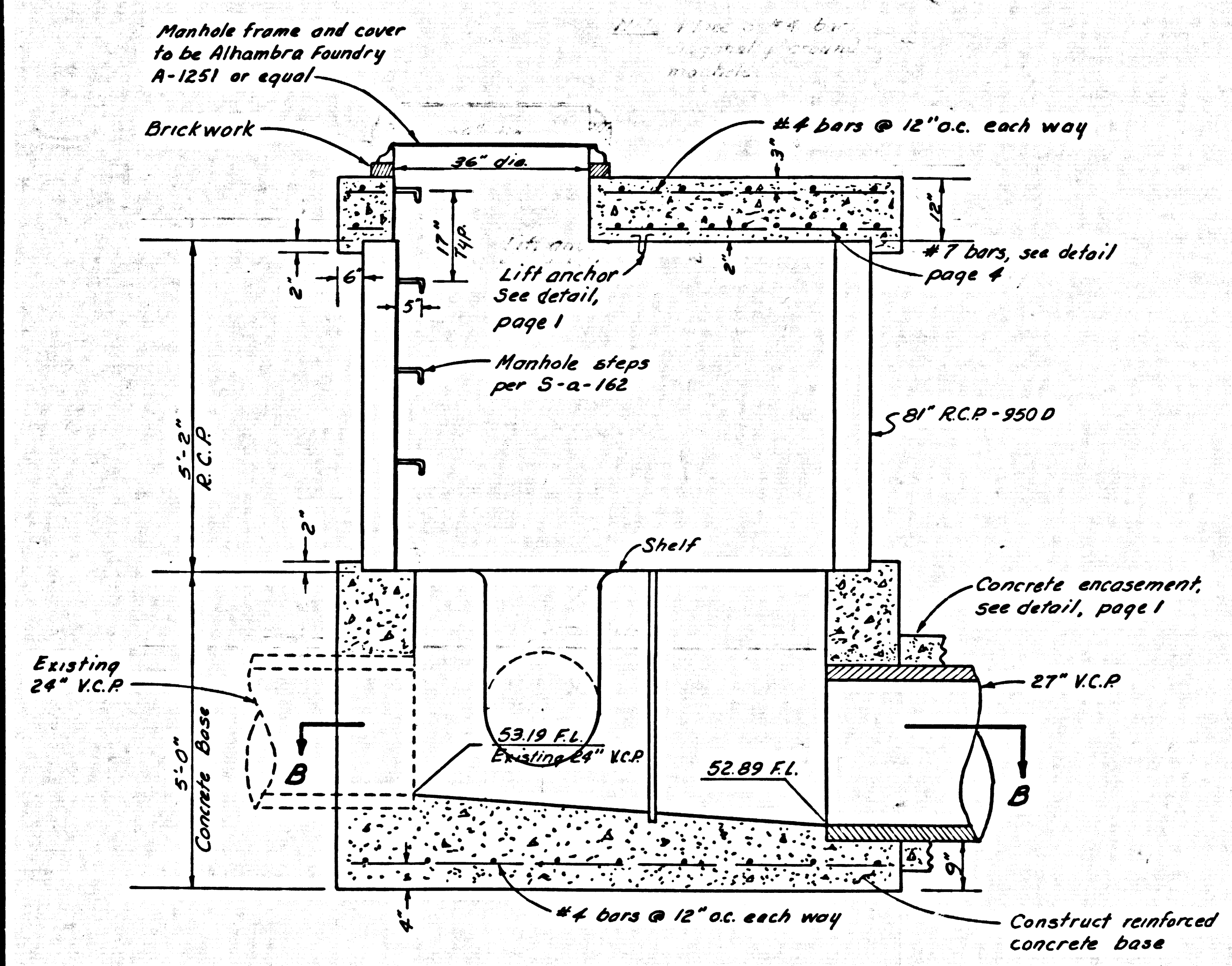
PLAN - U/S STRUCTURE
Scale: 1/2" = 1'-0"



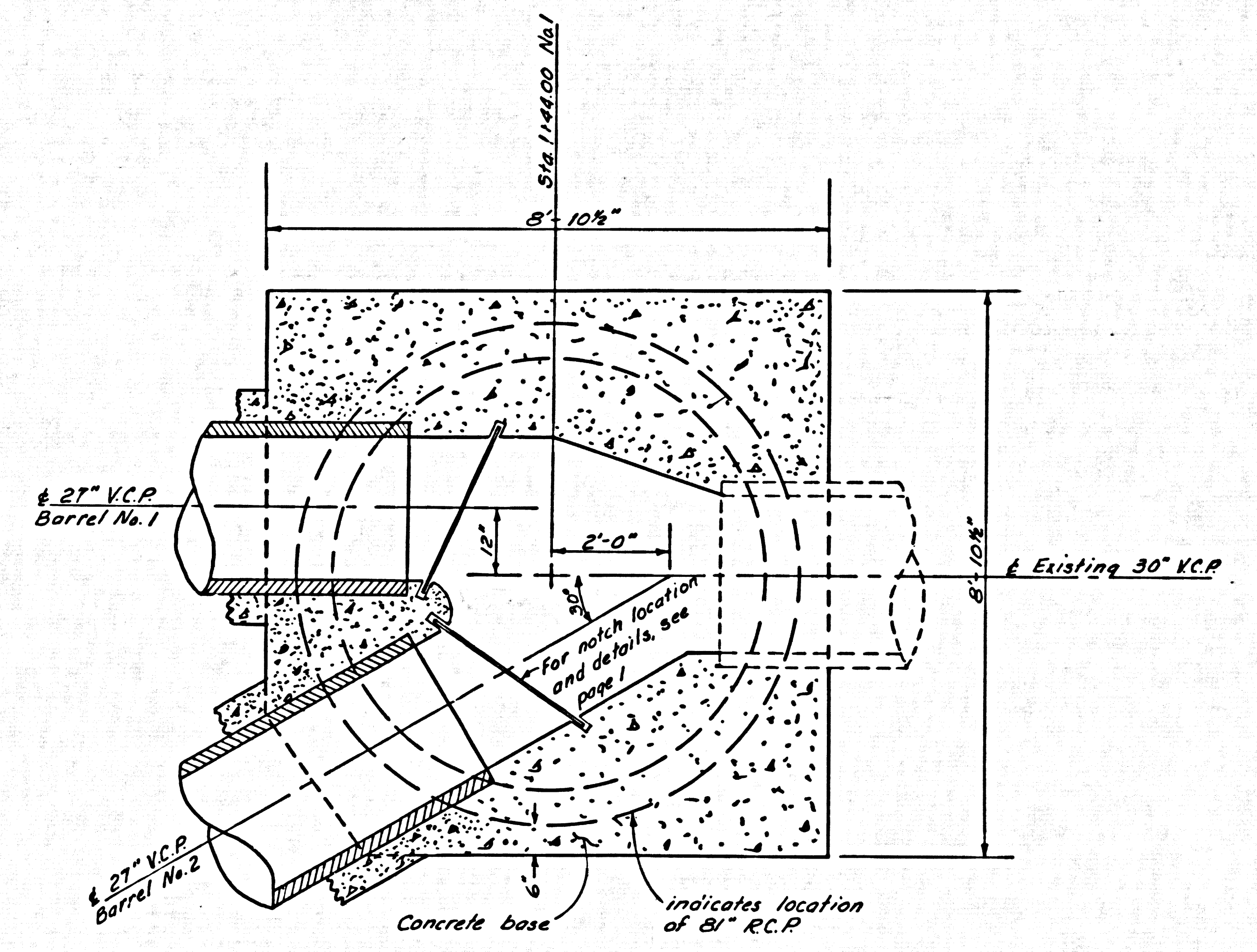
SECTION B-B
Scale: 1/2" = 1'-0"



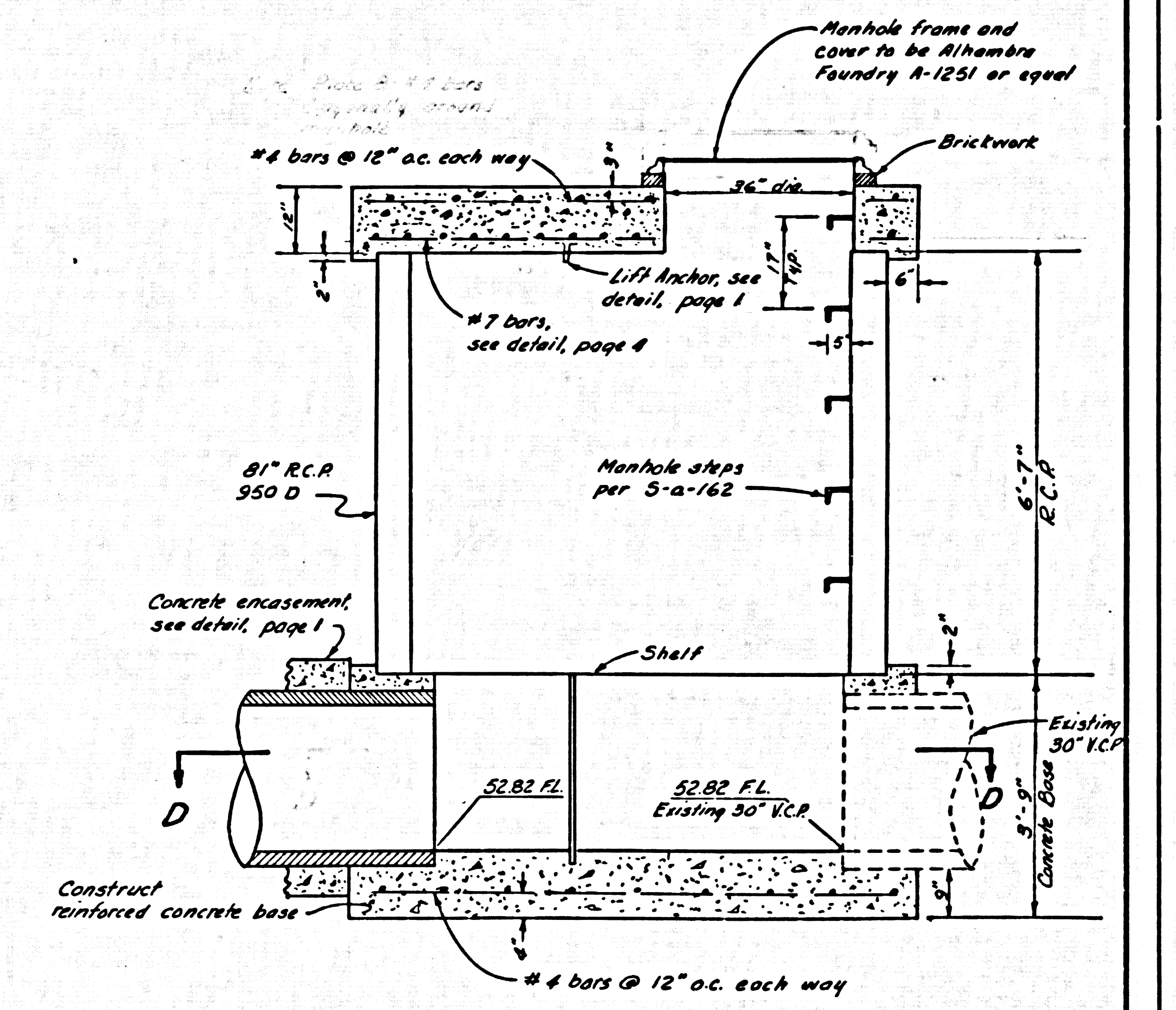
PLAN - D/S STRUCTURE
Scale: 1/2" = 1'-0"



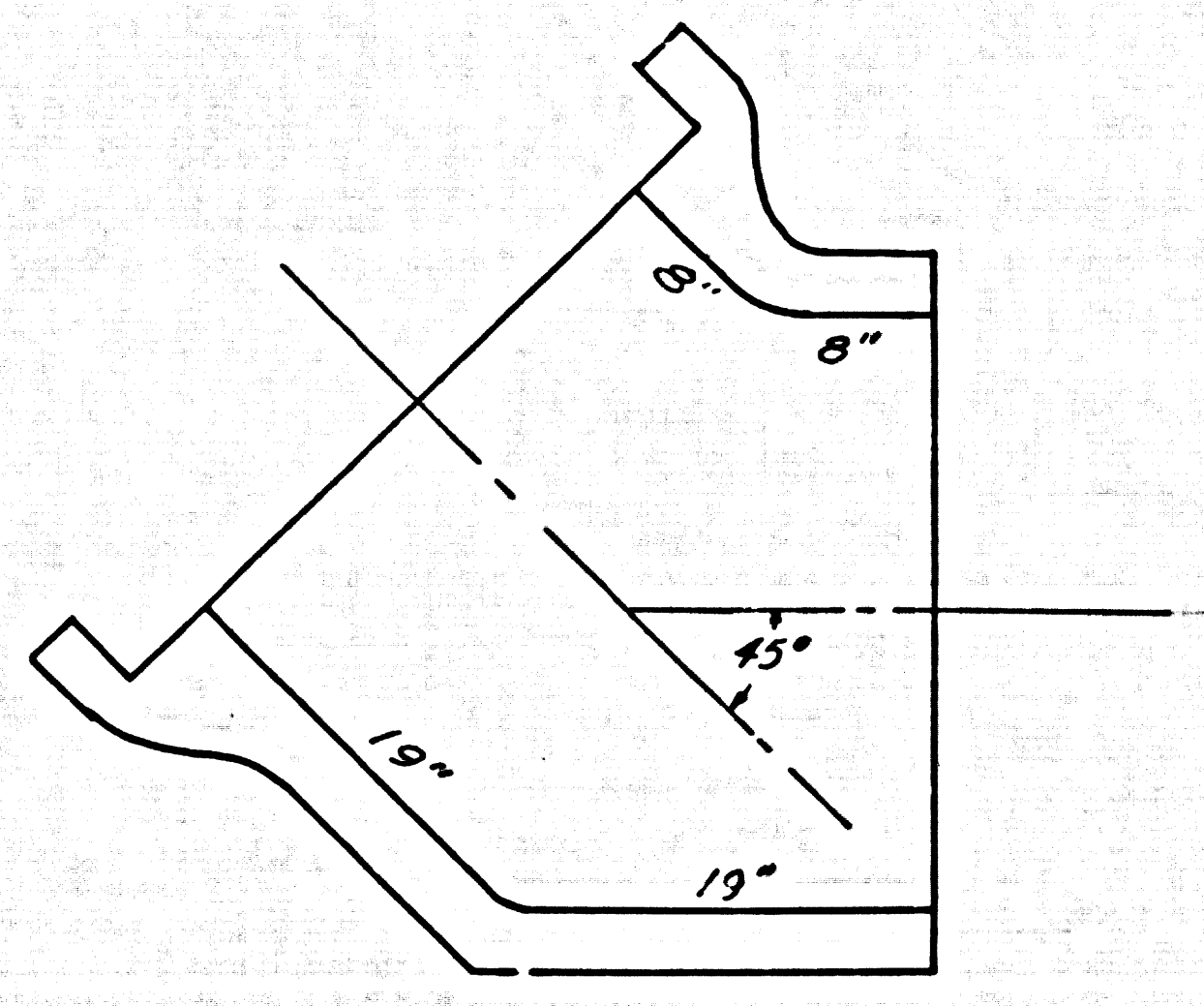
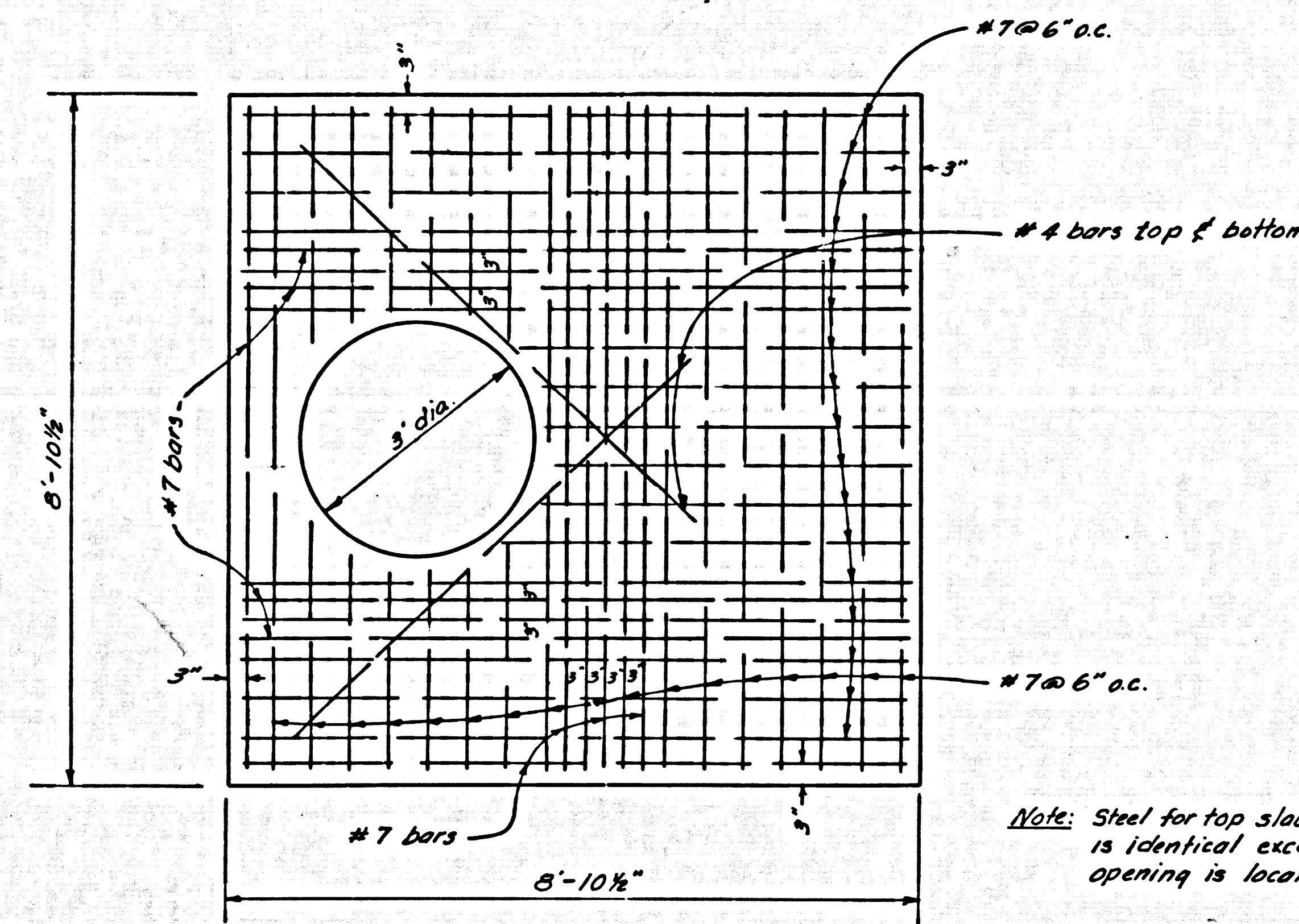
SECTION A-A
Scale: 1/2" = 1'-0"



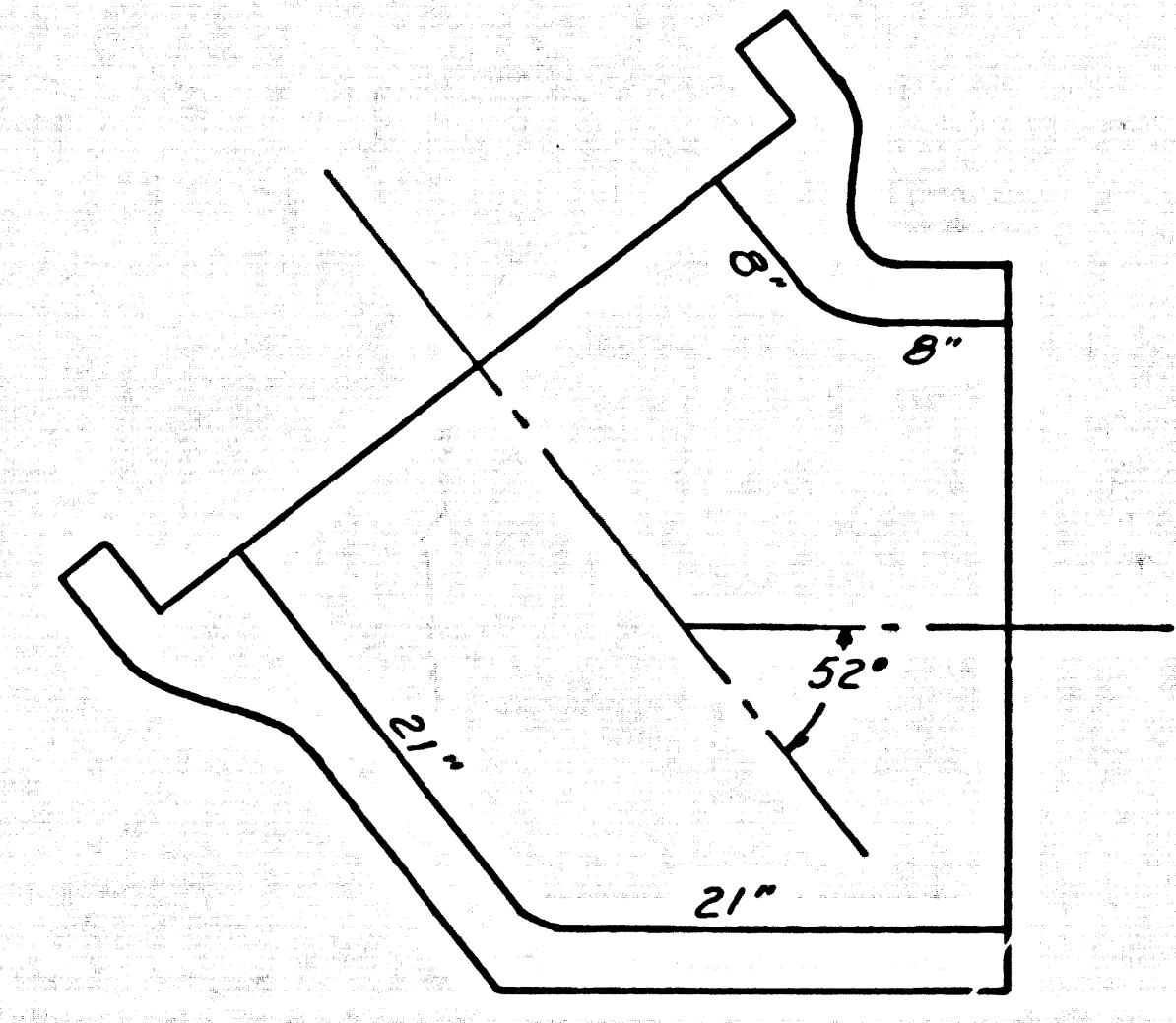
SECTION D-D
Scale: 1/2" = 1'-0"



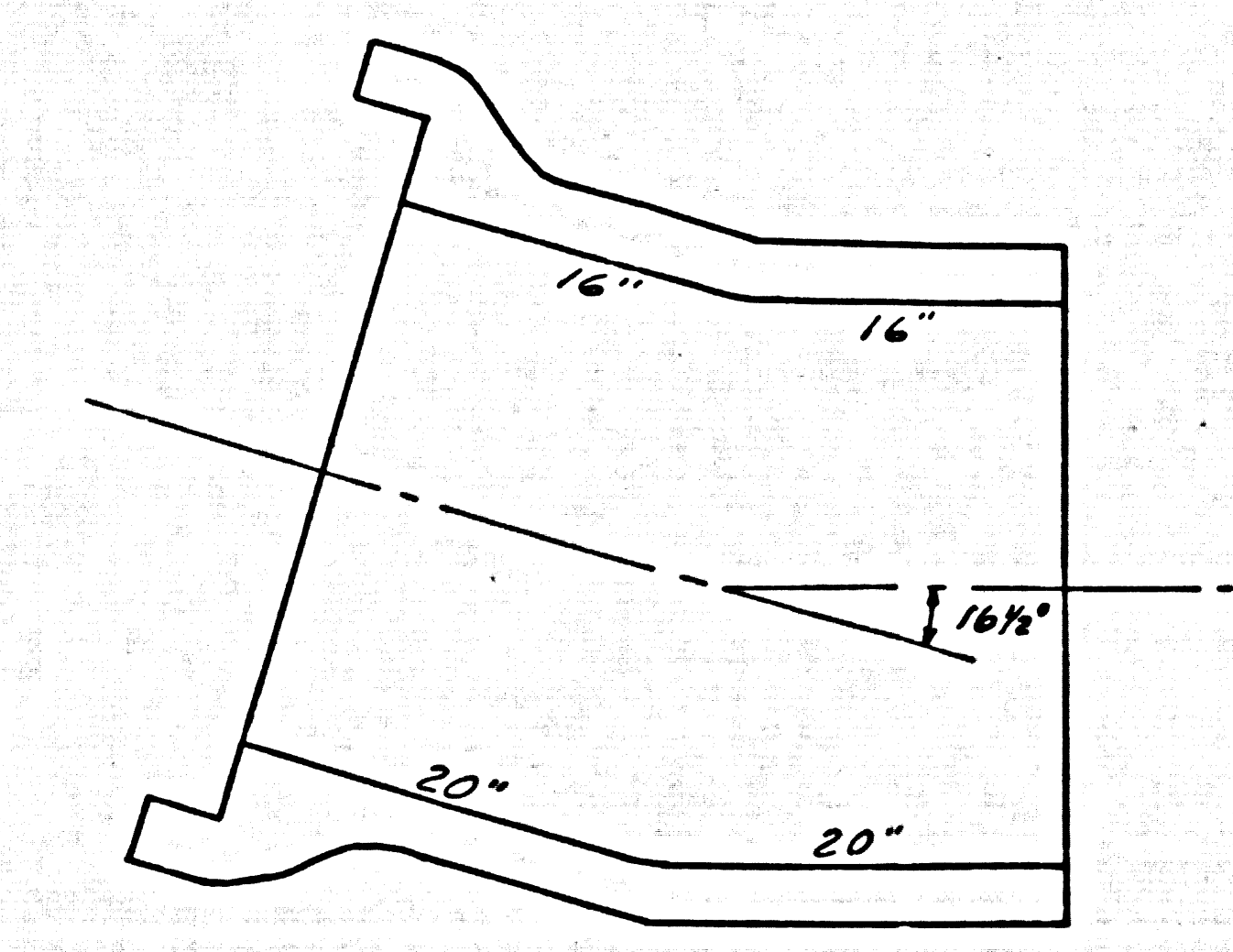
SECTION C-C
Scale: 1/2" = 1'-0"



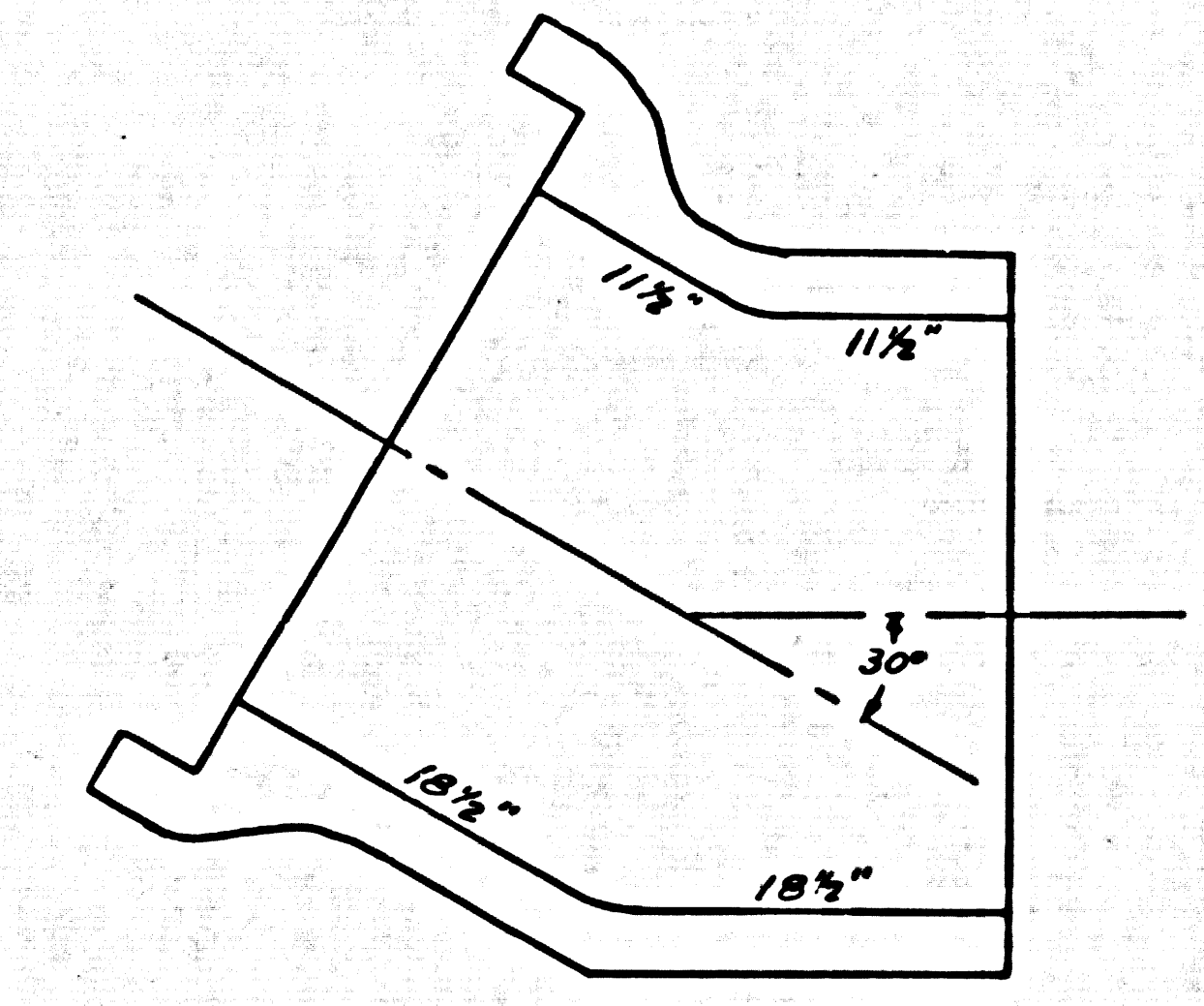
DETAIL - 45° ELBOW
Scale: 1" = 1'-0"



DETAIL - 52° ELBOW
Scale: 1" = 1'-0"



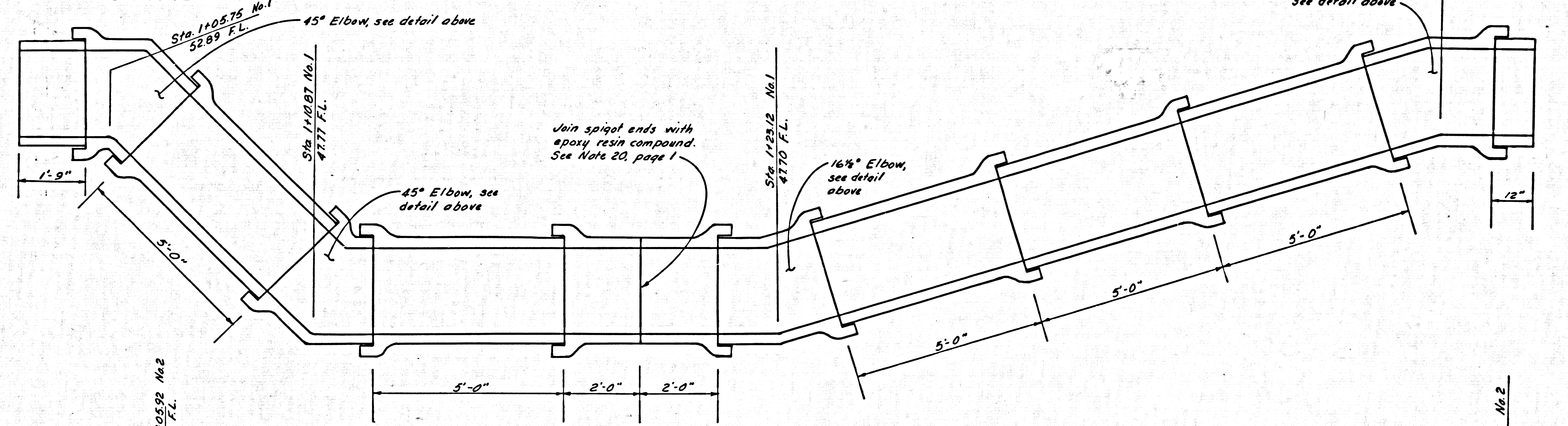
DETAIL - 16 1/2° ELBOW
Scale: 1" = 1'-0"



DETAIL - 30° ELBOW
Scale: 1" = 1'-0"

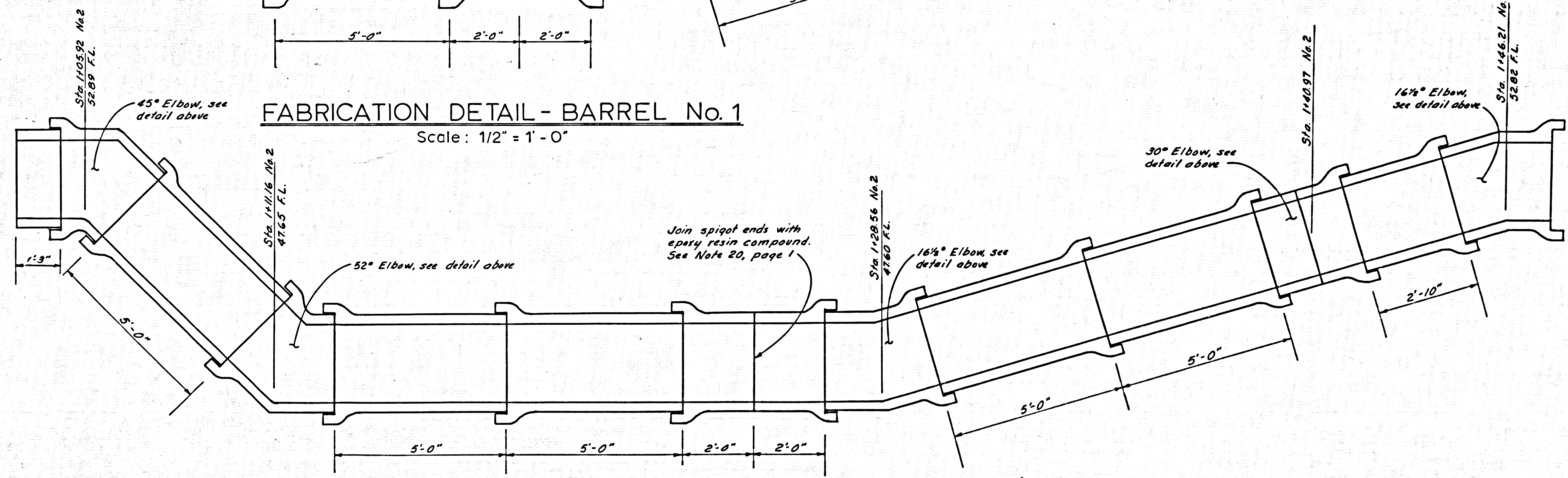
PLAN - U/S STRUCTURE
TOP SLAB BOTTOM STEEL

Scale: 1/2" = 1'-0"



FABRICATION DETAIL - BARREL No. 1

Scale: 1/2" = 1'-0"



FABRICATION DETAIL - BARREL No. 2

Scale: 1/2" = 1'-0"

Sta. 110200 No.1

Sta. 110200 No.2

Sta. 114627 No.1

Sta. 115215 No.2