

DOUBLE VERTICAL SCALE
LA PUENTE BLDG. DIST. NO. 2

PROFILE ALIGNMENT AND GRADE OF **P.C. 6173**
SANITARY SEWERS PAGE 1
 TO BE CONSTRUCTED IN
TRACT N° 26046

PRIVATE CONTRACT NO. 6173

W.S. 37
 0 SHEETS; 15 PAGES
 SCALE: VERT. 1"=5'
 HORIZ. 1"=40' JULY, 1962
 PREPARED IN THE OFFICES OF
HEMMERER ENGR. CO. INC.
 BY **Robert R. Flores**
 REG. C. E. NO. 11342

33311

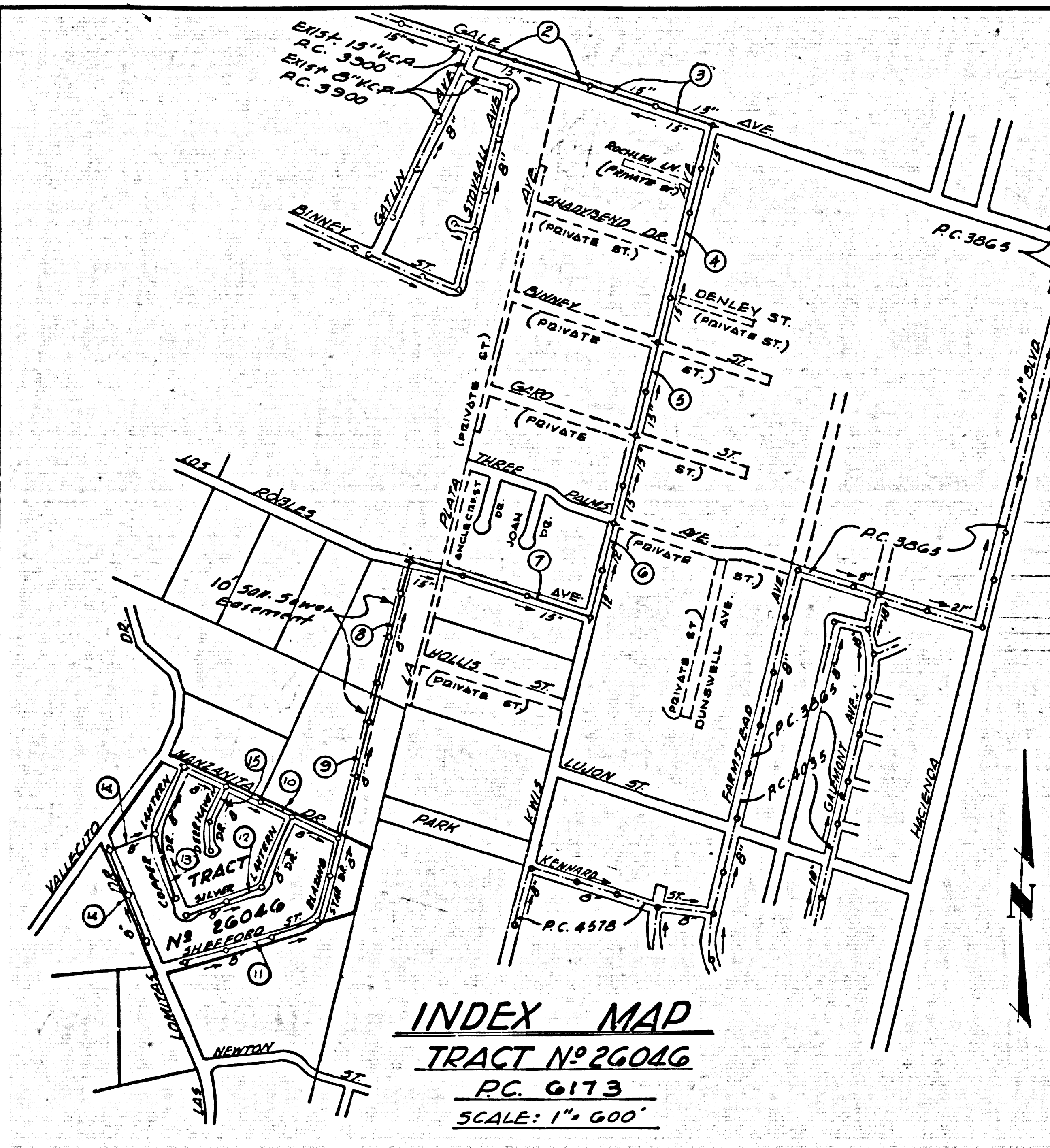
FOR LEGEND SEE PLAN NO. S.A-64

NOTE:
 GRADES TO WHICH THIS IMPROVEMENT IS TO BE CONSTRUCTED ARE SHOWN ON PLANS AND PROFILES. GRADE POINTS FOR TOP OF CURBS, CENTER LINE OF STREETS, OR CENTER LINE OF ALLEYS ARE SHOWN BY CIRCLES ON PROFILES. AT ALL POINTS BETWEEN DESIGNATED POINTS THE GRADE SHALL BE ESTABLISHED SO AS TO CONFORM TO A STRAIGHT LINE DRAWN BETWEEN SAID DESIGNATED POINTS.
 ELEVATIONS ARE IN FEET ABOVE U.S.C. & G.S. SEA LEVEL DATUM OF 1929.
 THIS DRAWING AND THE DATA HEREON ARE HEREBY MADE A PART OF THE SPECIFICATIONS.
 WORK SHALL BE CONSTRUCTED ACCORDING TO SPECIFICATIONS ON FILE IN THE OFFICE OF THE COUNTY ENGINEER AND SHALL BE PROSECUTED ONLY IN THE PRESENCE OF THE COUNTY ENGINEER.
 BEFORE WORK CAN BE STARTED, THE CONTRACTOR MUST OBTAIN A PERMIT TO EXCAVATE IN COUNTY STREETS FROM THE L.A. COUNTY ROAD DIST. DISTRICT OFFICE NO. 1 AND PAY A FEE TO THE COUNTY ENGINEER, ROOM 510 L.A. COUNTY ENGR. BLDG. 100 N. 1ST ST. SUFFICIENT TO COVER THE COST OF CONSTRUCTION INSPECTION AND RECORD PLANS.
 APPROVAL OF THIS PLAN BY THE COUNTY OF LOS ANGELES DOES NOT CONSTITUTE A REPRESENTATION AS TO THE ACCURACY OF THE LOCATION OF OR THE EXISTENCE OR NON-EXISTENCE OF ANY UNDERGROUND UTILITY PIPE, OR STRUCTURE WITHIN THE LIMITS OF THIS PROJECT. THIS NOTE APPLIES TO ALL PAGES.
 IF WORK IS TO BE DONE IN A STATE HIGHWAY, A PERMIT MUST BE OBTAINED FROM THE STATE OF CALIFORNIA, DIVISION OF HIGHWAYS, 120 SOUTH BRINDLEY STREET.

COUNTY OF LOS ANGELES, CALIFORNIA

APPROVED, JOHN A. LAMBIE, COUNTY ENGINEER
 APPROVED, J.D. BROWN, CHIEF ENGINEER
 BY **Richard E. Kline** ASST. SANITATION ENGINEER
 BY **J. P. O'Connell** OFFICE ENGINEER
 CHECKED BY **St. W. Widen** 1-14-63
 OFFICE OF COUNTY ENGINEER, Rm. C. E. NO. 2456

SUBMITTED: **B. F. Worling R.F. N° 11636 1-10-63**
 SAN DIMAS REGIONAL OFFICE



INDEX MAP
TRACT N° 26046
P.C. 6173
SCALE: 1" = 600'

NOTE:
 The Existence and Approximate Location of Underground Utilities or Structures Shown on These Plans Were Determined by a Search of the Available Public Records. To the Best of Our Knowledge There Are No Existing Underground Utilities or Structures Except as Shown on These Maps. The Contractor is Required to Take Due Precaution According to Part of the Location of Structures at the Site. It Shall be the Contractor's Responsibility to Notify the Owners of the Utilities or Structures Concerned Before Starting Work.

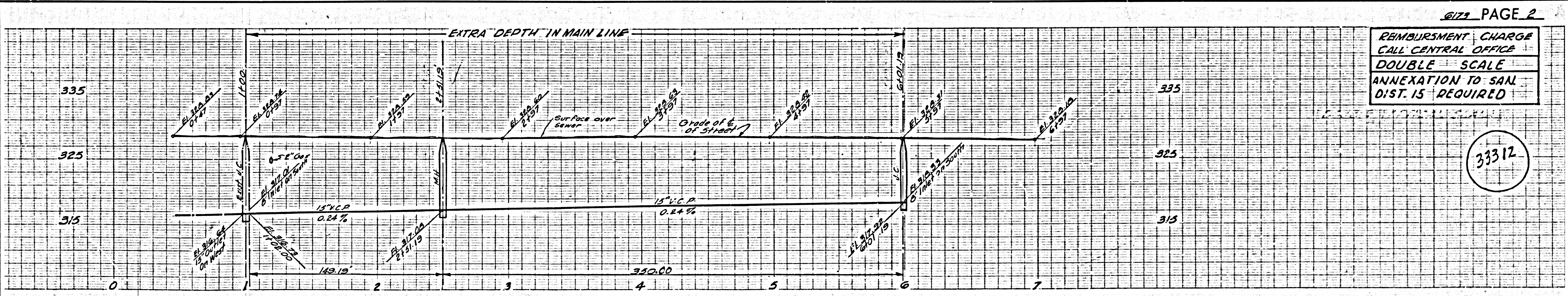
TRAFFIC REQUIREMENTS FOR GALE AVENUE, PAGES 2 AND 3.
 APPROVED: **B. F. Worling R.F. N° 11636 2-4-63**
 SAN DIMAS REGIONAL OFFICE

BENCH MARK:
 S.C. 1603
 L & T IN CONC STEP TO HOUSE
 1700 VALECIDO DR
 172' E. & 165' N.
 6 MANZANITA DR.

NO CONNECTIONS FOR THE DISPOSAL OF INDUSTRIAL WASTES SHALL BE MADE TO SEWERS SHOWN ON THESE DRAWINGS WITHOUT WRITTEN PERMISSION FROM THE CHIEF ENGINEER AND GENERAL MANAGER OF THE COUNTY SANITATION DISTRICTS.

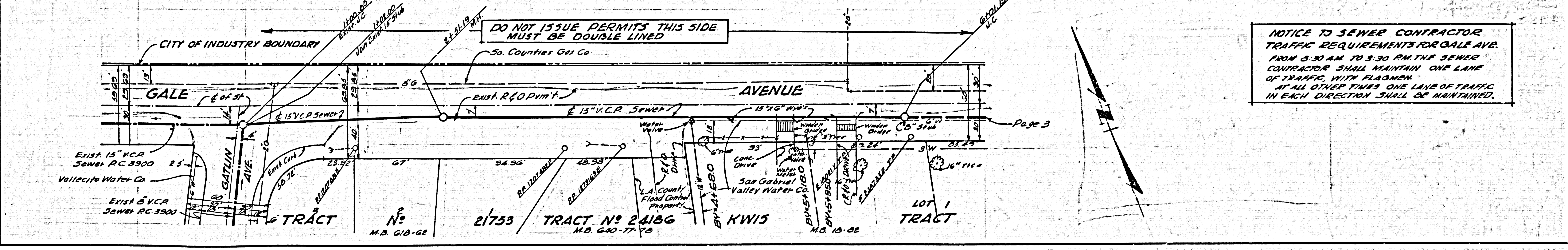
- NOTE:
1. PROVIDE STAKES ON THE PROPERTY LINE OR PROPERTY LINES PRODUCED AT RIGHT ANGLES TO THE SEWER LINE AT THE CENTER LINE OF EACH MANHOLE.
 2. NO REPRESENTATIVE OF THE COUNTY ENGINEER WILL SURVEY OR LAY OUT ANY PORTION OF THE WORK.
 3. THE OWNER OR HIS AUTHORIZED REPRESENTATIVE SHALL FURNISH THE COUNTY ENGINEER WITH GRADE SHEETS AND STATIONING FOR ALL HOUSE LATERALS AND Y BRANCHES AND SHALL PROVIDE STAKES FOR THEM AT THEIR PROPER LOCATIONS WITH STATIONING PLAINLY MARKED. ANY CHANGE IN LOCATION SHALL BE REQUESTED IN WRITING BY THE OWNER OR HIS REPRESENTATIVE.
 4. THE PRIVATE ENGINEER SHALL FURNISH THE HOUSE LATERAL DEPTH AT THE PROPERTY LINE BELOW THE TOP OF CURB ELEVATION FOR EACH HOUSE LATERAL ON THE GRADE SHEET.
 5. NO REVISIONS SHALL BE MADE IN THESE PLANS WITHOUT THE APPROVAL OF THE COUNTY ENGINEER.
 6. USE STANDARD MANHOLE FRAMES AND COVERS, S-117, 1'-0" DIA.
 7. USE EXTRA STRENGTH PIPE, ALL PIPE IS STANDARD EXCEPT AS NOTED.
 USE ARCHIMEDICAN COMPRESSION JOINTS FOR ALL VCP JOINTS. USE SPECIFICATIONS, SECTIONS 30 & 48 OF 1962.
 8. RESURFACE ALL TRENCH WITHIN PAVED AREA TO MEET L.A. COUNTY ROAD DEPT. OR CALIF. STATE HIGHWAY REQUIREMENTS IN ACCORDANCE WITH PERMITS.
 9. ENCASE FOUR FEET OF SEWER AT POINTS OF INTERFERENCE WITH POLES, CASE III, S-172.
 10. HOUSE LATERALS TO BE CONSTRUCTED WITH INVERTS AT PROPERTY LINE 6 FEET BELOW CURB GRADE.
 11. MANHOLES SHALL BE BRICK OR PRECAST CONCRETE MANHOLES PER SA155 OR SA175 MAY BE USED AS AN ALTERNATIVE IN LOCATIONS APPROVED BY COUNTY ENGR.
 12. FOR ALLOWABLE LEAKAGE TEST USE FORMULA NO. 2, SPECS, SEC. 84.
 13. MANHOLE TOPS IN UNIMPROVED RIGHTS-OF-WAY TO BE SIX INCHES ABOVE FINISHED GRADE.
 14. THE CONTRACTOR SHALL NOTIFY THE CONSTRUCTION DEPARTMENT BY TELEPHONE, MADISON 5-474, 24 HOURS AT LEAST TWENTY-FOUR HOURS BEFORE STARTING ANY WORK UNDER THIS CONTRACT.
 15. STANDARD SPECIFICATIONS DATED MAY 25, 1962 APPLY IN THE CONSTRUCTION OF THIS PROJECT.
 16. ALL STATE AND LOCAL TRENCH SAFETY ORDERS WILL BE RIGIDLY ENFORCED.
 17. WHEREVER GROUND WATER IS ENCOUNTERED DURING THE CONSTRUCTION OF THE SEWERS, THE V.C.P. JOINTS SHALL BE KEPT DRY THROUGHOUT. SEE SPECS, SECT. 33-48, OR MECHANICAL COMPRESSION JOINTS PER SPECS, SECT. 30.
 18. IF A POWER POLE IS WITHIN 3' OF THE SEWER, THE SEWER SHALL BE ENCASED PER S-172, CASE III, 6 FEET ON EITHER SIDE FROM THE POINT OF INTERFERENCE. LATERALS SHALL BE CONSTRUCTED IN A STRAIGHT ALIGNMENT AT RIGHT ANGLES FROM THE MAIN LINE SEWER EXCEPT AS SHOWN ON THE PLANS. HOUSE LATERALS FROM CHIMNEYS SHALL NOT HAVE AN ANGLE OF LESS THAN 45° WITH THE MAIN LINE SEWER. ANY CHANGE IN ALIGNMENT SHALL BE REQUESTED IN WRITING BY THE PRIVATE ENGINEER.
 19. IN DRAINING THE CURBS OF CONSTRUCTION, IT IS DETERMINED THAT THERE IS LESS THAN 4 FEET OF COVER OVER THE TOP OF A MAIN LINE OR HOUSE LATERAL V.C.P. SEWER WHICH IS NOT INDICATED ON THE PLANS. THE PIPE SHALL BE ENCASED PER S-172, CASE III, UNLESS OTHERWISE APPROVED BY THE COUNTY ENGINEER.
 20. ALL HOUSE LATERALS SHALL BE CONSTRUCTED IN A STRAIGHT ALIGNMENT AT RIGHT ANGLES FROM THE MAIN LINE SEWER EXCEPT AS SHOWN ON THE PLANS. HOUSE LATERALS FROM CHIMNEYS SHALL NOT HAVE AN ANGLE OF LESS THAN 45° WITH THE MAIN LINE SEWER. ANY CHANGE IN ALIGNMENT SHALL BE REQUESTED IN WRITING BY THE PRIVATE ENGINEER.
 21. IN DRAINING THE CURBS OF CONSTRUCTION, IT IS DETERMINED THAT THERE IS LESS THAN 4 FEET OF COVER OVER THE TOP OF A MAIN LINE OR HOUSE LATERAL V.C.P. SEWER WHICH IS NOT INDICATED ON THE PLANS. THE PIPE SHALL BE ENCASED PER S-172, CASE III, UNLESS OTHERWISE APPROVED BY THE COUNTY ENGINEER.

COLLECT CHARGES
AS INDICATED
 Donald R. Olson 11/20/62

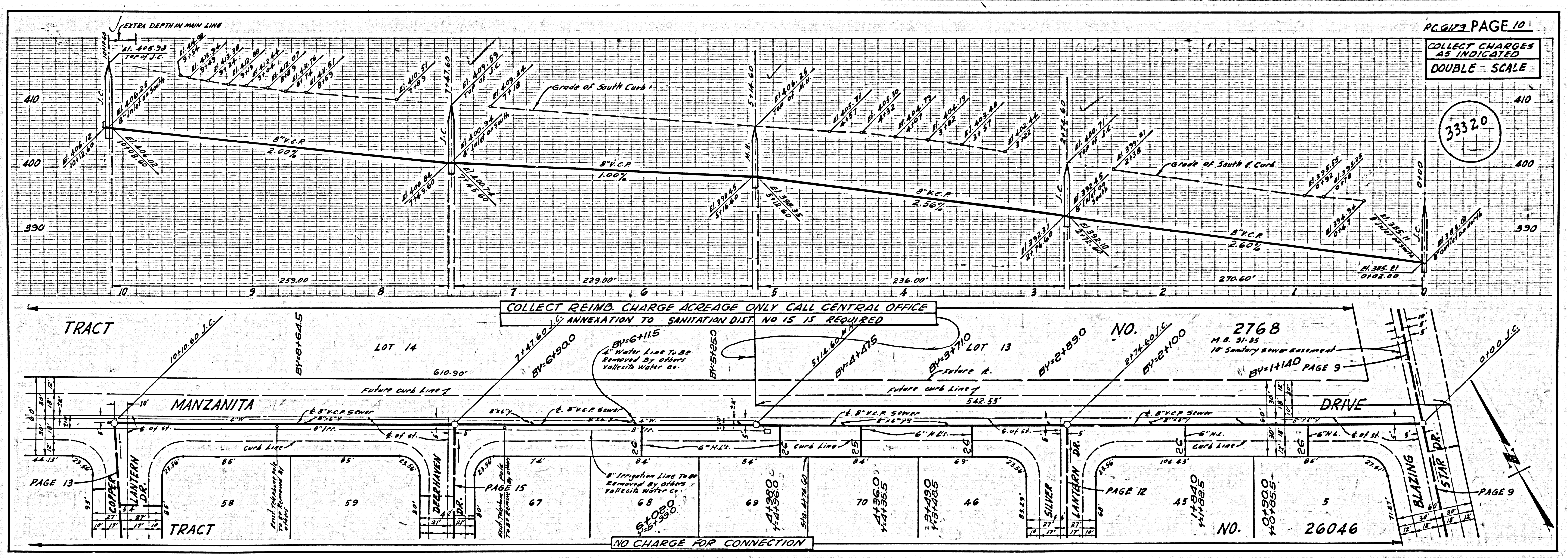
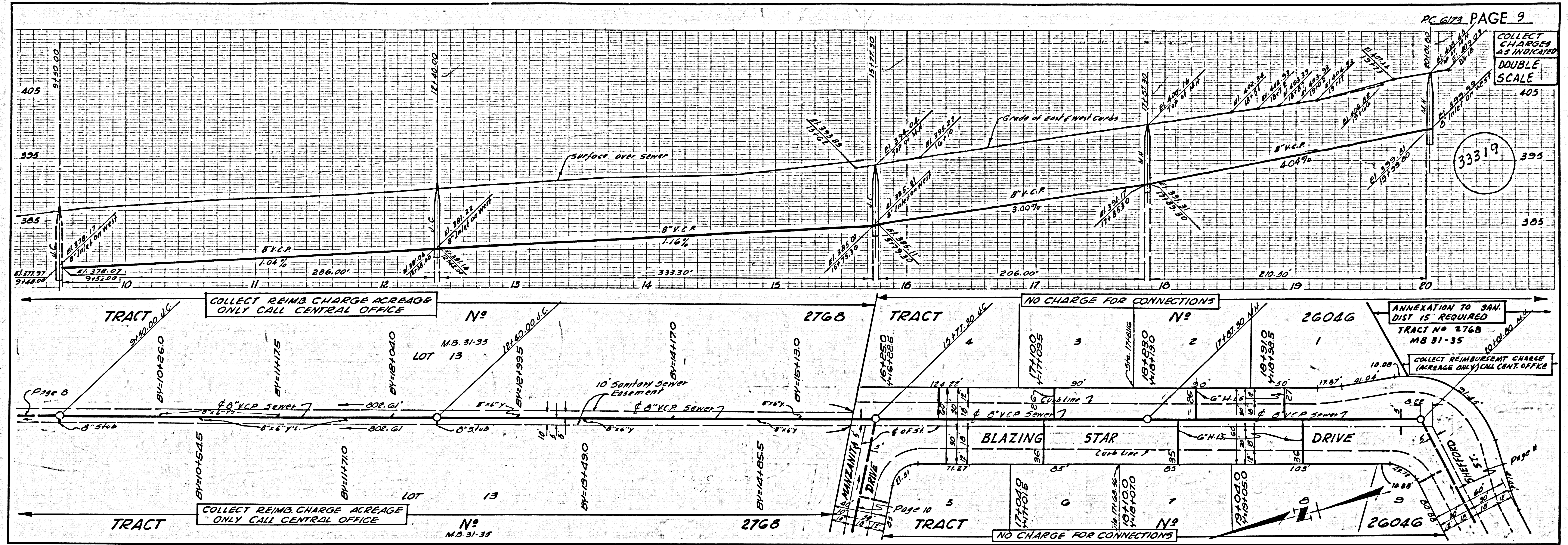


REIMBURSEMENT CHARGE
CALL CENTRAL OFFICE
DOUBLE SCALE
ANNEXATION TO SAN. DIST. 15 REQUIRED

33312

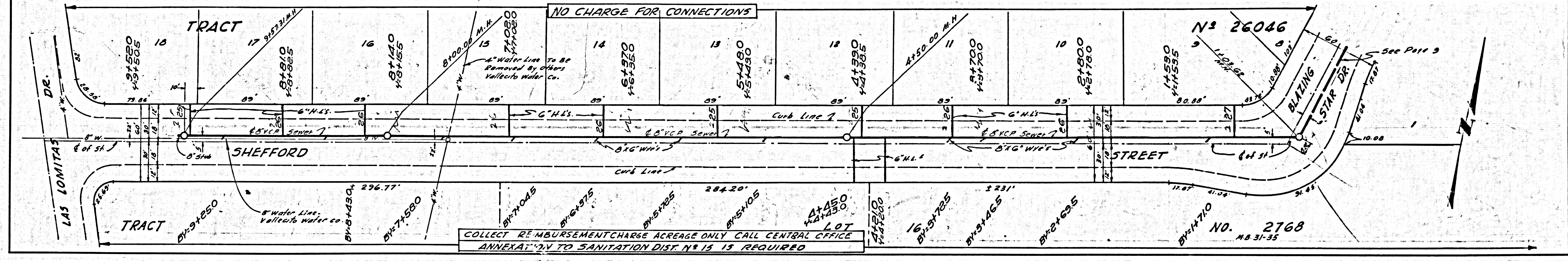
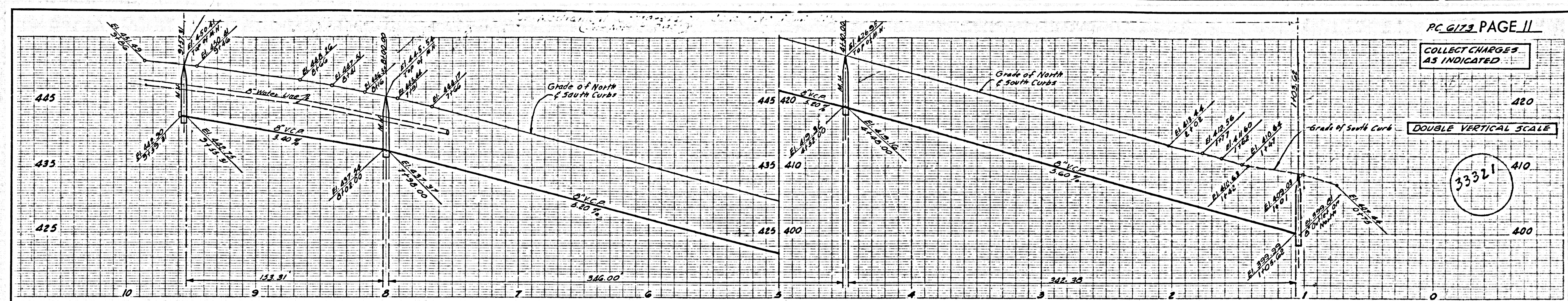


NOTICE TO SEWER CONTRACTOR
TRAFFIC REQUIREMENTS FOR GALE AVE.
 FROM 5:30 AM TO 3:30 PM THE SEWER CONTRACTOR SHALL MAINTAIN ONE LANE OF TRAFFIC WITH FLAGMEN. AT ALL OTHER TIMES ONE LANE OF TRAFFIC IN EACH DIRECTION SHALL BE MAINTAINED.



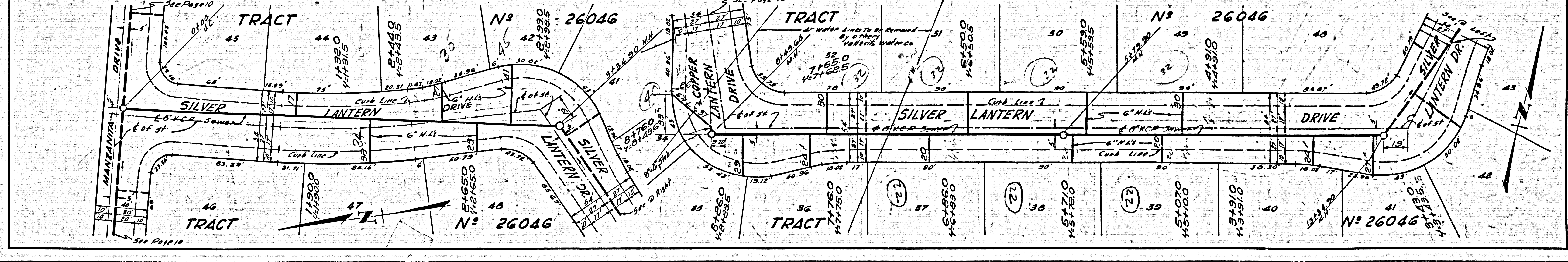
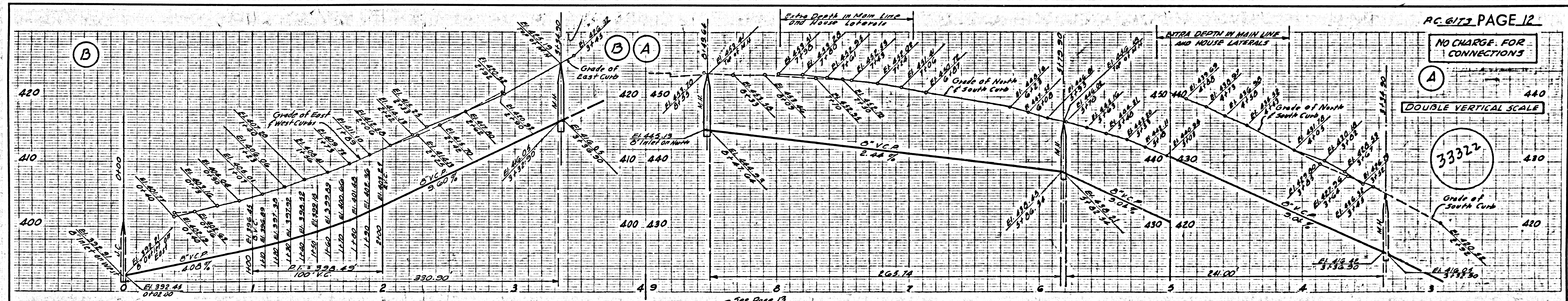
COLLECT CHARGES AS INDICATED

DOUBLE VERTICAL SCALE



NO CHARGE FOR CONNECTIONS

DOUBLE VERTICAL SCALE



NO CHARGE FOR CONNECTIONS
DOUBLE SCALE

333.25

