

DOUBLE SCALE
PUENTE BLDG. DIST. NO. 2

PROFILE ALIGNMENT AND GRADE OF P.C. 6176
SANITARY SEWERS PAGE 1
TO BE CONSTRUCTED IN J.N. 0357.92

TRACT NO 27112

PRIVATE CONTRACT NO. 6176

W.S. 38

2 SHEETS; 3 PAGES

SCALE: VERT. 1"=6' HORIZ. 1"=40'

APRIL, 1962

PREPARED IN THE OFFICES OF

Development Consultants, Inc.

ENGINEERING DIVISION

1003 B. Colorado Blvd., Pasadena, California

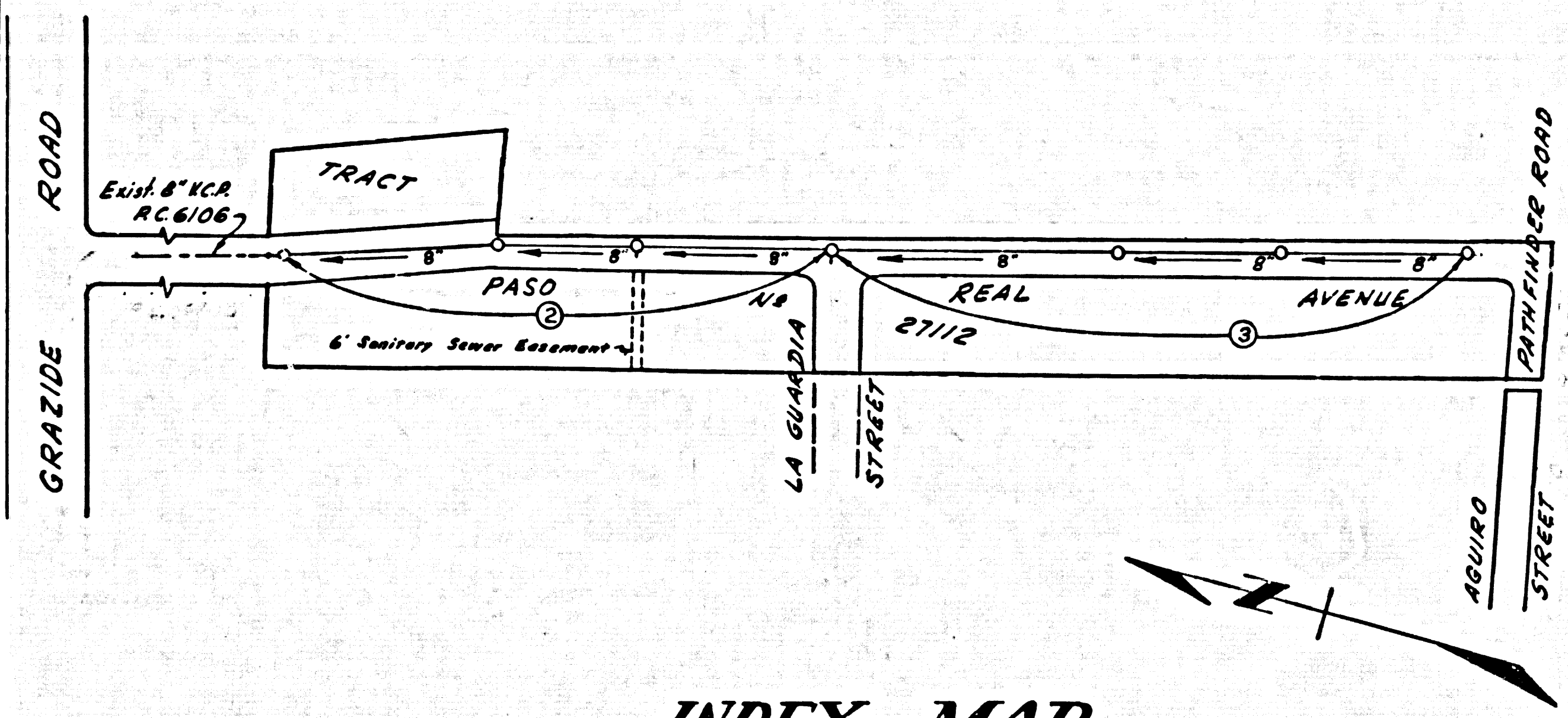
REG. C. E. NO. 3553

FOR LEGEND SEE PLAN NO. S-A-64

31077

BENCH MARK

BM 44-10 Elev 468.306 CSFB 1366-12 Adj 1955
Fifth Ave & Desire Ave 11' South of E of
Pavement of Fifth Ave & on Nly Prolongation
of Wly Edge of Pavement of Desire Ave a Sid
CS Man in Hand Hole Stamped BM-44-10
1955 Adj RE 63



INDEX MAP
TRACT NO 27112
P.C. - 6176
Scale: 1" = 200'

COLLECT CHARGES
AS INDICATED

Handwritten signature/initials

NOTES:

1. PROVIDE STAKES ON THE PROPERTY LINE OR PROPERTY LINES PRODUCED AT RIGHT ANGLES TO THE SEWER LINE AT THE CENTER LINE OF EACH MANHOLE.
2. NO REPRESENTATIVE OF THE COUNTY ENGINEER WILL SURVEY OR LAY OUT ANY PORTION OF THE WORK.
3. THE OWNER OR HIS AUTHORIZED REPRESENTATIVE SHALL FURNISH THE COUNTY ENGINEER WITH GRADE SHEETS AND STATIONING FOR ALL HOUSE LATERALS AND Y BRANCHES AND SHALL PROVIDE STAKES FOR THEM AT THEIR PROPER LOCATIONS WITH STATIONING PLAINLY MARKED. ANY CHANGE IN LOCATION SHALL BE REQUESTED IN WRITING BY THE OWNER OR HIS REPRESENTATIVE.
4. THE PRIVATE ENGINEER SHALL FURNISH THE HOUSE LATERAL DEPTH AT THE PROPERTY LINE BELOW THE TOP OF CURB ELEVATION FOR EACH HOUSE LATERAL ON THE GRADE SHEET.
5. NO REVISIONS SHALL BE MADE IN THESE PLANS WITHOUT THE APPROVAL OF THE COUNTY ENGINEER.
6. USE STANDARD MANHOLE FRAMES AND COVERS, S-117.
7. USE EXTRA STRENGTH PIPE, ALL PIPE STANDARD DEPTH EXCEPT AS NOTED.
8. USE CEMENT MORTAR OR "WEDGE-LOCK" OR "SPEED-SEAL" FOR ALL V.C.P. JOINTS PER SECS. 34 & 44.
9. RESURFACE ALL TRENCH WITHIN PAVED AREA TO MEET L.A. COUNTY ROAD DEPT. OR CALIF. STATE HIGHWAY REQUIREMENTS IN ACCORDANCE WITH PERMITS.
10. ENCASE FOUR FEET OF SEWER AT POINTS OF INTERFERENCE WITH POLES, CASE III, S-117.
11. HOUSE LATERALS TO BE CONSTRUCTED WITH INVERTS AT PROPERTY LINE, 6 FEET BELOW CURB GRADE.
12. ALL STRUCTURES SHALL BE BRICK SEWER STRUCTURES, S-104, PRECAST CONCRETE MANHOLES PER S-115 OR S-117.
13. FOR ALLOWABLE LEAKAGE TEST USE FORMULA NO. 1, SPEC. S, SEC. 54.
14. MANHOLE TOPS IN UNIMPROVED RIGHTS-OF-WAY TO BE SIX INCHES ABOVE FINISHED GRADE.
15. THE CONTRACTOR SHALL NOTIFY THE CONSTRUCTION DIVISION BY TELEPHONE, MADRON 5-414, EXT. 81551 AT LEAST TWENTY-FOUR HOURS BEFORE STARTING ANY WORK UNDER THIS CONTRACT.
16. STANDARD SPECIFICATIONS DATED OCTOBER 25, 1961 APPLY IN THE CONSTRUCTION OF THIS PROJECT.
17. ALL HOUSE LATERALS OR MAIN LINE SEWERS CROSSING STORM DRAINS NOT OTHERWISE ENCASED SHALL BE ENCASED PER S-117, CASE III.

NOTE:
GRADES TO WHICH THIS IMPROVEMENT IS TO BE CONSTRUCTED ARE SHOWN ON PLANS AND PROFILES. GRADE POINTS FOR TOP OF CURBS, CENTER LINE OF STREETS, OR CENTER LINE OF ALLEYS ARE SHOWN BY CIRCLES ON PROFILES. AT ALL POINTS BETWEEN DESIGNATED POINTS THE GRADE SHALL BE ESTABLISHED SO AS TO CONFORM TO A STRAIGHT LINE DRAWN BETWEEN SAID DESIGNATED POINTS.
ELEVATIONS ARE IN FEET ABOVE U.S.C. & G.S. SEA LEVEL DATUM OF 1929.
THIS DRAWING AND THE DATA HEREON ARE HEREBY MADE A PART OF THE SPECIFICATIONS.
WORK SHALL BE CONSTRUCTED ACCORDING TO SPECIFICATIONS ON FILE IN THE OFFICE OF THE COUNTY ENGINEER AND SHALL BE PROSECUTED ONLY IN THE PRESENCE OF THE COUNTY ENGINEER.
BEFORE WORK CAN BE STARTED, THE CONTRACTOR MUST OBTAIN A PERMIT TO EXCAVATE IN COUNTY STREETS FROM THE L.A. COUNTY ROAD DEPT., DISTRICT OFFICE NO. 14 AND PAY A FEE TO THE COUNTY ENGINEER, ROOM 310, COUNTY ENGINE BLDG., 100 N. GARDEN ST., L.A., SUFFICIENT TO COVER THE COST OF CONSTRUCTION INSPECTION AND RECORD PLANS.
APPROVAL OF THIS PLAN BY THE COUNTY OF LOS ANGELES DOES NOT CONSTITUTE A REPRESENTATION AS TO THE ACCURACY OF THE LOCATION OF OR THE EXISTENCE OR NON-EXISTENCE OF ANY UNDERGROUND UTILITY PIPE, OR STRUCTURE WITHIN THE LIMITS OF THIS PROJECT. THIS NOTE APPLIES TO ALL PAGES.
IF WORK IS TO BE DONE IN A STATE HIGHWAY, A PERMIT MUST BE OBTAINED FROM THE STATE OF CALIFORNIA, DIVISION OF HIGHWAYS, 120 SOUTH SPRING STREET.

COUNTY OF LOS ANGELES, CALIFORNIA

APPROVED, JOHN A. LAMBIE, COUNTY ENGINEER APPROVED, JOHN D. PARKHURST, CHIEF ENGR.

NO. SAN. DIST. NO. 21

BY *Handwritten signature* ASST. SANITATION ENGINEER BY *Handwritten signature* OFFICE ENGINEER

CHECKED BY *Handwritten signature*

OFFICE OF COUNTY ENGINEER, REG. C. E. NO. 3416

Submitted: *Handwritten signature* 5-3-62
SAN DIMAS REGIONAL ENGINEER

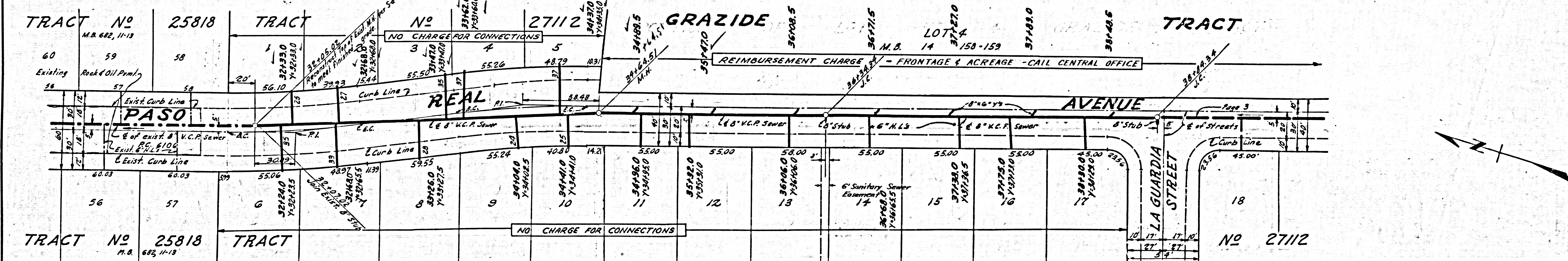
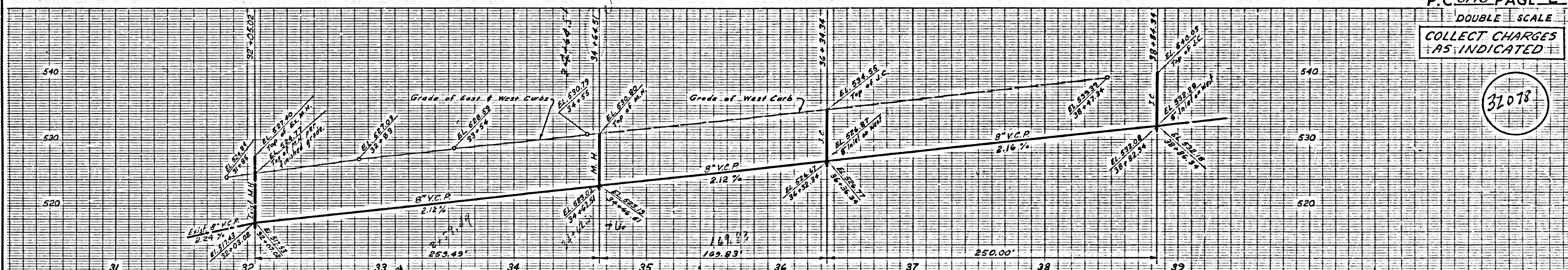
NO CONNECTIONS FOR THE DISPOSAL OF INDUSTRIAL WASTES SHALL BE MADE TO SEWERS SHOWN ON THESE DRAWINGS WITHOUT WRITTEN PERMISSION FROM THE CHIEF ENGINEER AND GENERAL MANAGER OF THE COUNTY SANITATION DISTRICTS.

P.C. 6176 PAGE 2

DOUBLE SCALE

COLLECT CHARGES AS INDICATED

31078



P.C. 6176

TRACT NO. 27112

P.C. 6176

DOUBLE SCALE
COLLECT CHARGES
AS INDICATED

32079

