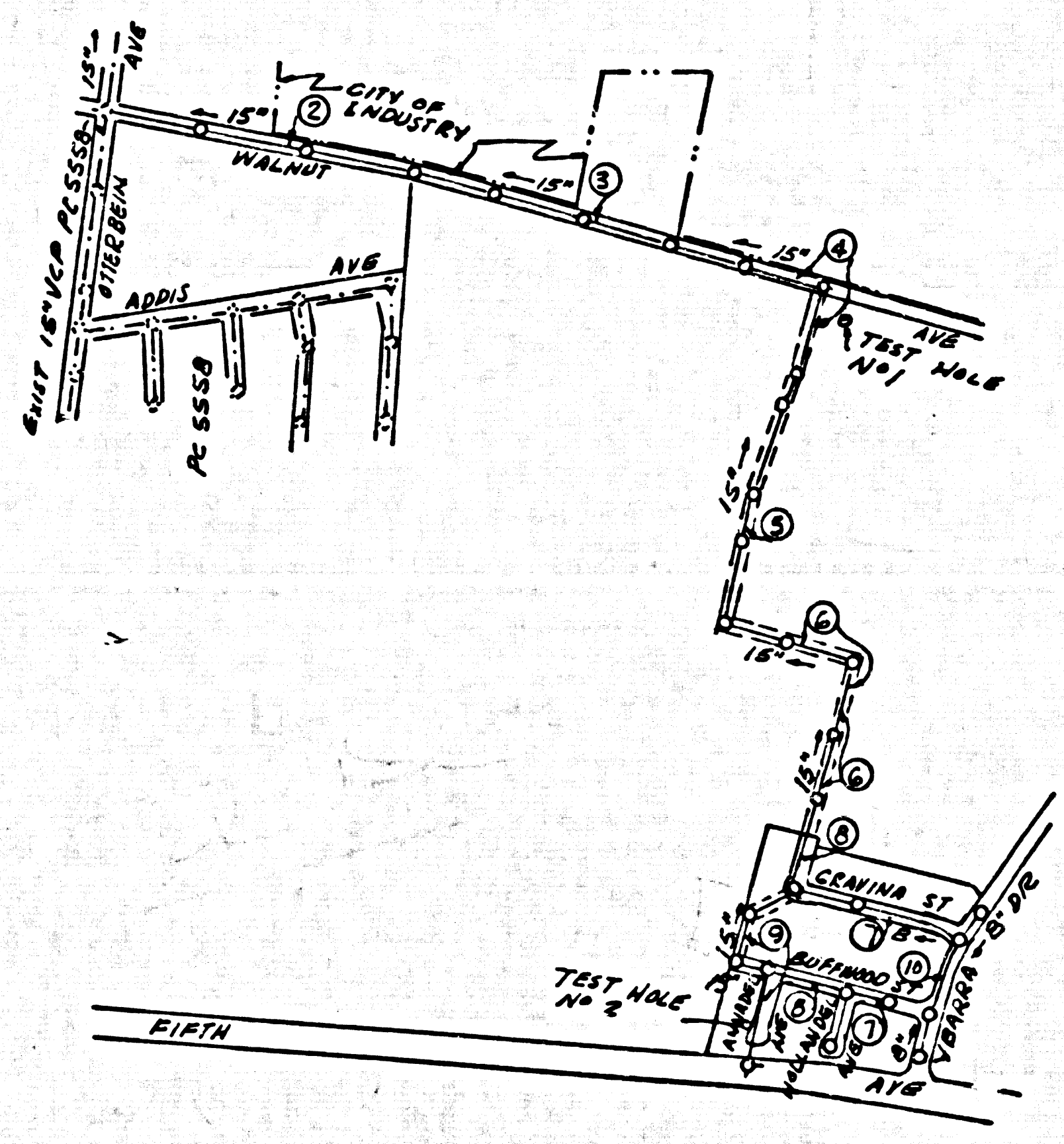
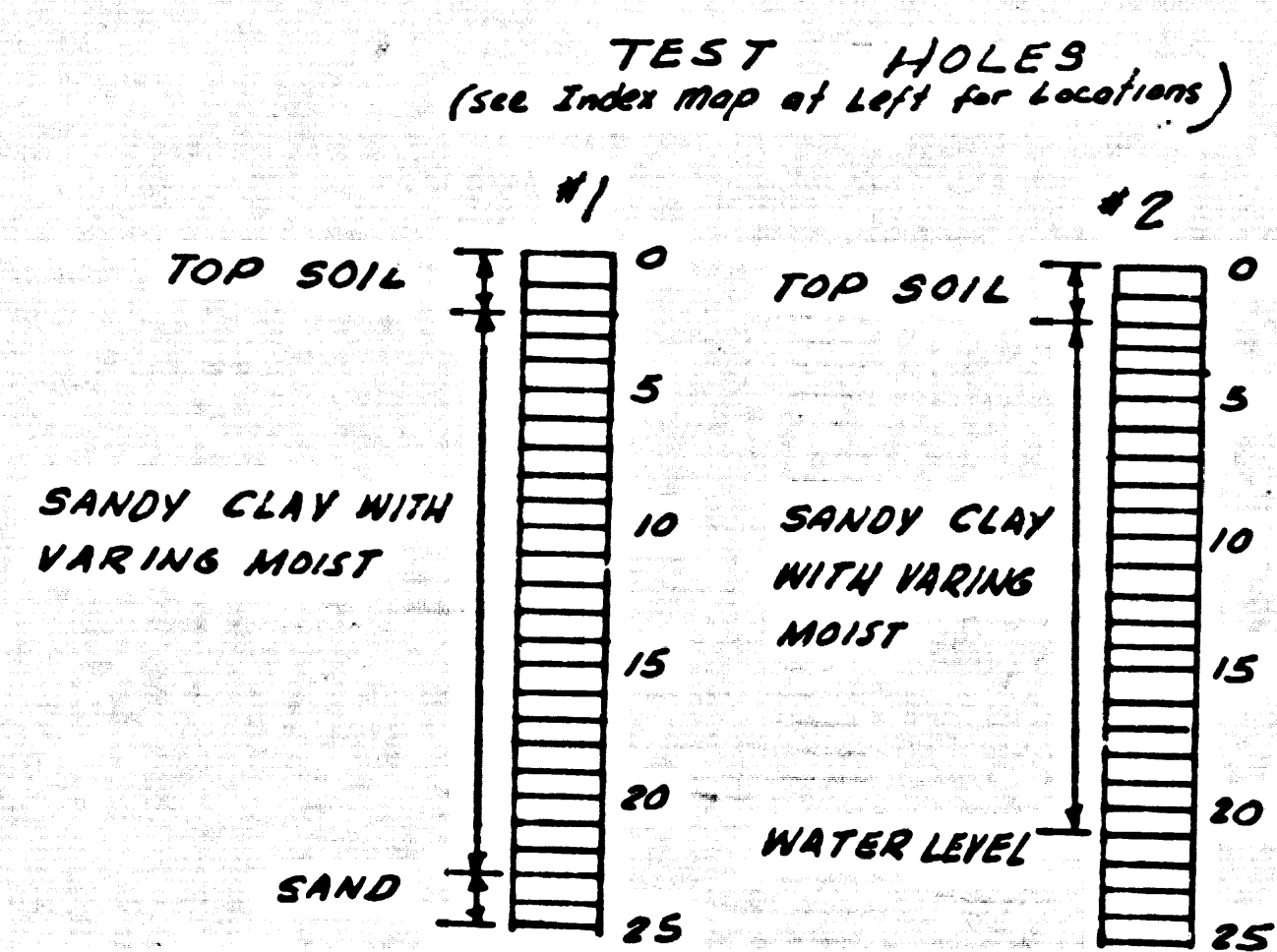


33671



INDEX MAP  
TRACT NO. 25097  
P.C. 6178  
SCALE: 1"=600'

BENCH MARK:  
B.M. 44-7  
FIFTH AVENUE, 0.25 MILE E. OF BREA CANYON  
CUTOFF ROAD NEAR CULVERT AT MILE POST 3.75,  
11.0 M. CENTER PAV. 1.0' WLY. FROM S. ELY. PRO-  
LONGATION OF A BARE WIRE FENCE 4 1/2' FROM  
FENCE CORNER. A STD. CO. SURV. MON. IN HAND  
HOLE STAMPED B.M. 44-7 1955-RE 63-FB-1346-109  
ARJ 1955  
ELEV 583.121



21. IF DURING THE COURSE OF CONSTRUCTION IT IS DETERMINED THAT THERE IS LESS THAN FOUR FEET OF COVER OVER THE TOP OF A MAIN LINE OR HOUSE LATERAL V.C.P. SEWER WHICH IS NOT INDICATED ON THE PLANS, THE PIPE SHALL BE ENCASED PER SO 172, CASE III UNLESS OTHERWISE APPROVED BY THE COUNTY ENGINEER

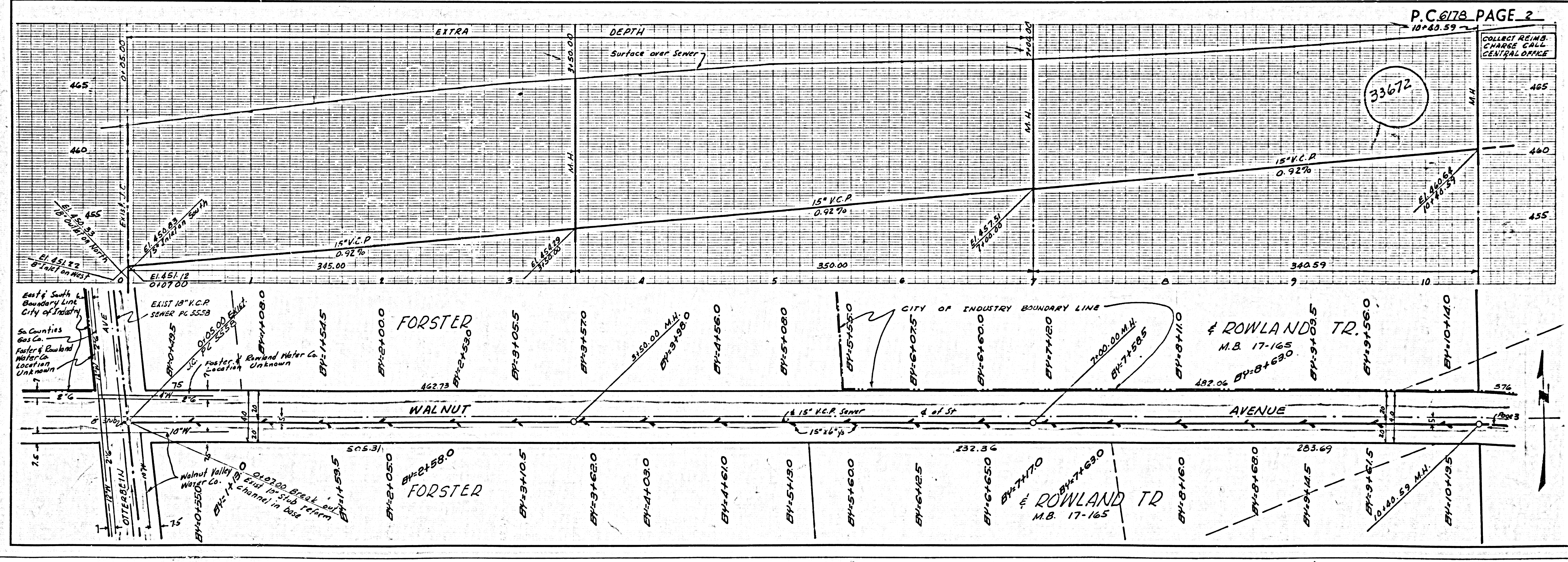
- NOTES:  
1. PROFILE STAKES ON THE PROPERTY LINE OR PROPERTY LINES PRODUCED AT RIGHT ANGLES TO THE SEWER LINE AT THE CENTER LINE OF EACH MANHOLE.  
2. NO REPRESENTATIVE OF THE COUNTY ENGINEER WILL SURVEY OR LAY OUT ANY PORTION OF THE WORK.  
3. THE OWNER OR HIS AUTHORIZED REPRESENTATIVE SHALL FURNISH THE COUNTY ENGINEER WITH GRADE SHEETS AND STATIONING FOR ALL HOUSE LATERALS AND Y BRANCHES AND SHALL PROVIDE STAKES FOR THEM AT THEIR PROPER LOCATIONS WITH STATIONING PLAINLY MARKED. ANY CHANGE IN LOCATION SHALL BE REQUESTED IN WRITING BY THE OWNER OR HIS REPRESENTATIVE.  
4. THE PRIVATE ENGINEER SHALL FURNISH THE HOUSE LATERAL DEPTH AT THE PROPERTY LINE BELOW THE TOP OF CURB ELEVATION FOR EACH HOUSE LATERAL ON THE GRADE SHEET.  
5. NO REVISIONS SHALL BE MADE IN THESE PLANS WITHOUT THE APPROVAL OF THE COUNTY ENGINEER.  
6. USE STANDARD MANHOLE FRAMES AND COVERS, 5-17T, 24" DIA. AT 10" DIA.  
7. USE MECHANICAL COMPRESSION JOINTS FOR ALL V.C.P. PER SPEC. SECS. 36, 48 & 49 OR 50 IF NOT SPECIFIED AS AN ALTERNATE TO LOCATIONS APPROVED BY THE COUNTY ENGR. IN ACCORDANCE WITH PERMITS.  
8. ENCASE FOUR FEET OF SEWER AT POINTS OF INTERFERENCE WITH POLES, CASE III, 5-172.  
9. HOUSE LATERALS TO BE CONSTRUCTED WITH INVERTS AT PROPERTY LINE 6 FEET BELOW CURB GRADE EXCEPT AS NOTED.  
10. USE EXTRA STRENGTH PIPE ALL PIPE STANDARD DEPTH EXCEPT AS NOTED.  
11. FOR ALLOWABLE LEAKAGE TEST USE FORMULA NO. 1 SPEC. SEC. 54.  
12. MANHOLE TOPS IN UNIMPROVED RIGHTS-OF-WAY TO BE SIX INCHES ABOVE FINISHED GRADE.  
13. THE CONTRACTOR SHALL NOTIFY THE CONSTRUCTION DIVISION BY TELEPHONE, MADISON 8-4111, AT LEAST TWENTY-FOUR HOURS BEFORE STARTING ANY WORK UNDER THIS CONTRACT.  
14. STANDARD SPECS DATED MAY 25 1962 APPLY IN THE CONSTRUCTION OF THIS PROJECT.  
15. ALL STATE AND LOCAL TRENCH SAFETY ORDERS WILL BE RIGIDLY ENFORCED.  
16. ALL HOUSE LATERALS SHALL BE CONSTRUCTED IN A STRICT ALIGNMENT AT RIGHT ANGLES FROM THE MAIN LINE SEWER EXCEPT AS SHOWN ON THE PLANS. HOUSE LATERALS FROM CHIMNEYS SHALL NOT HAVE AN ANGLE OF LESS THAN 45° WITH THE MAINLINE SEWER.  
17. WHERE EVER GROUND WATER IS ENCOUNTERED DURING THE CONSTRUCTION OF THE SEWERS, THE V.C.P. JOINTS SHALL BE OF JOINT COMPOUND PER SPEC'S, SECS 33 & 48 OR MECHANICAL COMPRESSION JOINTS PER SPEC'S, SEC 36.  
18. IF A POWER POLE IS WITHIN THREE FEET OF THE SEWER, THE SEWER SHALL BE ENCASED PER SO 172, CASE III, TWO FEET ON EITHER SIDE FROM THE POINT OF INTERFERENCE.

COLLECT CHARGES AS INDICATED  
D. R. L. O. 12/17/62

NO CONNECTIONS FOR THE DISPOSAL OF INDUSTRIAL WASTES SHALL BE MADE TO SEWERS SHOWN ON THESE DRAWINGS WITHOUT WRITTEN PERMISSION FROM THE CHIEF ENGINEER AND GENERAL MANAGER OF THE COUNTY SANITATION DISTRICTS.

NOTE:  
GRADES TO WHICH THIS IMPROVEMENT IS TO BE CONSTRUCTED ARE SHOWN ON PLANS AND PROFILE. GRADE POINTS FOR TOP OF CURBS, CENTER LINE OF STREETS, OR CENTER LINE OF ALLEYS ARE SHOWN BY CIRCLES ON PROFILES. AT ALL POINTS BETWEEN DESIGNATED POINTS THE GRADE SHALL BE ESTABLISHED SO AS TO CONFORM TO A STRAIGHT LINE DRAWN BETWEEN SAID DESIGNATED POINTS.  
ELEVATIONS ARE IN FEET ABOVE U.S.C. & G.S. SEA LEVEL DATUM OF 1929.  
THIS DRAWING AND THE DATA HEREON ARE HEREBY MADE A PART OF THE SPECIFICATIONS.  
WORK SHALL BE CONSTRUCTED ACCORDING TO SPECIFICATIONS ON FILE IN THE OFFICE OF THE COUNTY ENGINEER AND SHALL BE PROSECUTED ONLY IN THE PRESENCE OF THE COUNTY ENGINEER.  
BEFORE WORK CAN BE STARTED, THE CONTRACTOR MUST OBTAIN A PERMIT TO EXCAVATE IN COUNTY STREETS FROM THE L.A. COUNTY ROAD DIST. DISTRICT OFFICE NO. 1 AND PAY A FEE TO THE COUNTY ENGINEER'S ROOMS 315 S. WARE ST. LOS ANGELES, CALIF. 90012 SUFFICIENT TO COVER THE COST OF CONSTRUCTION INSPECTION AND RECORD PLANS.  
APPROVAL OF THIS PLAN BY THE COUNTY OF LOS ANGELES DOES NOT CONSTITUTE A REPRESENTATION AS TO THE ACCURACY OF THE LOCATION OR THE EXISTENCE OR NON-EXISTENCE OF ANY UNDERGROUND UTILITY PIPE, OR STRUCTURE WITHIN THE LIMITS OF THIS PROJECT. THIS NOTE APPLIES TO ALL PAGES.  
IF WORK IS TO BE DONE IN A STATE HIGHWAY, A PERMIT MUST BE OBTAINED FROM THE STATE OF CALIFORNIA, DIVISION OF HIGHWAYS, 120 SOUTH SPRING STREET.

COUNTY OF LOS ANGELES, CALIFORNIA  
APPROVED, JOHN A. LAMBIE, COUNTY ENGINEER APPROVED, J. B. BRUCKNER, CHIEF ENGINEER  
BY: [Signature] ASST. SANITATION ENGINEER BY: [Signature] OFFICE ENGINEER  
CHECKED BY: [Signature] OFFICE OF COUNTY ENGINEER, REG. C. E. NO. 9496  
SUBMITTED [Signature] P.E. NO. 11636 12-17-62  
SAN DIMAS REGIONAL OFFICE

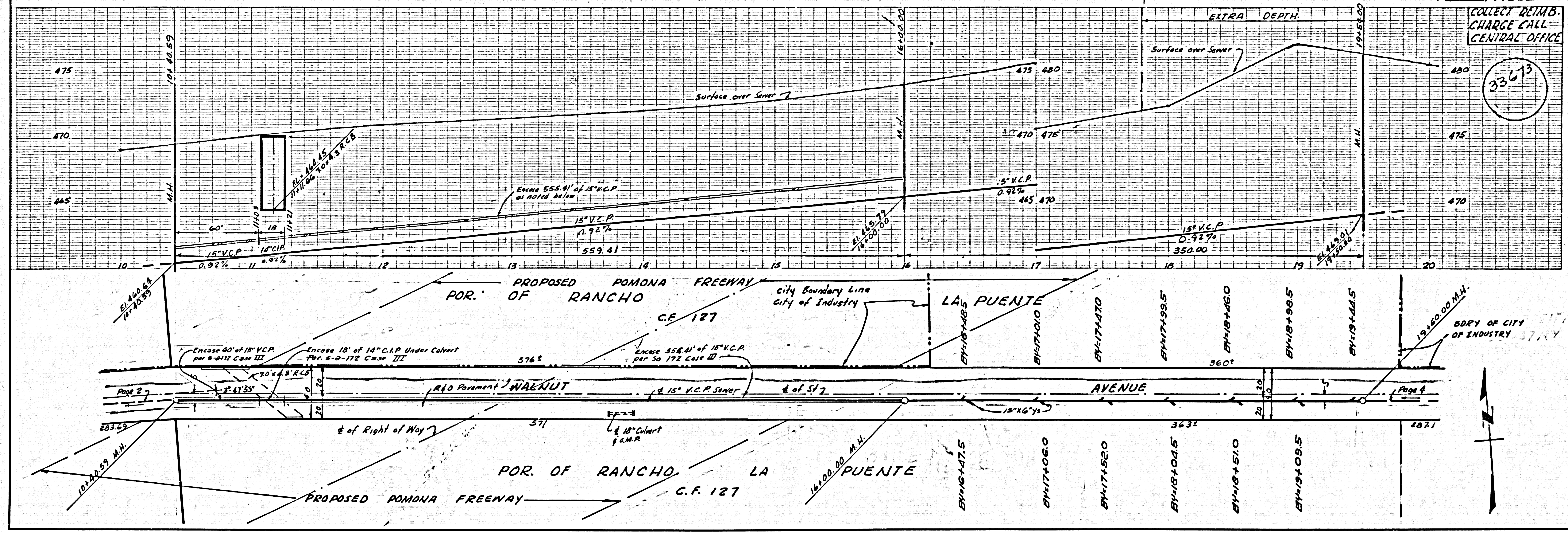


COLLECT REIMB. CHARGE CENTRAL OFFICE

33672

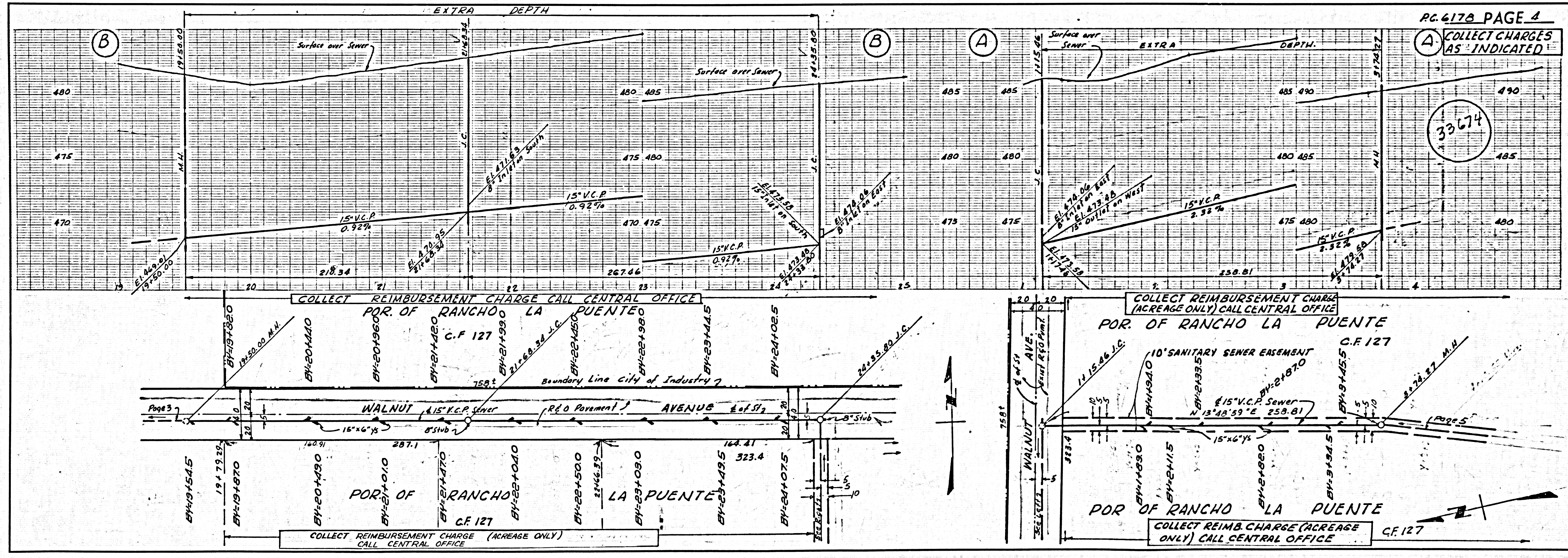
COLLECT REIMB. CHARGE CALL CENTRAL OFFICE

33613



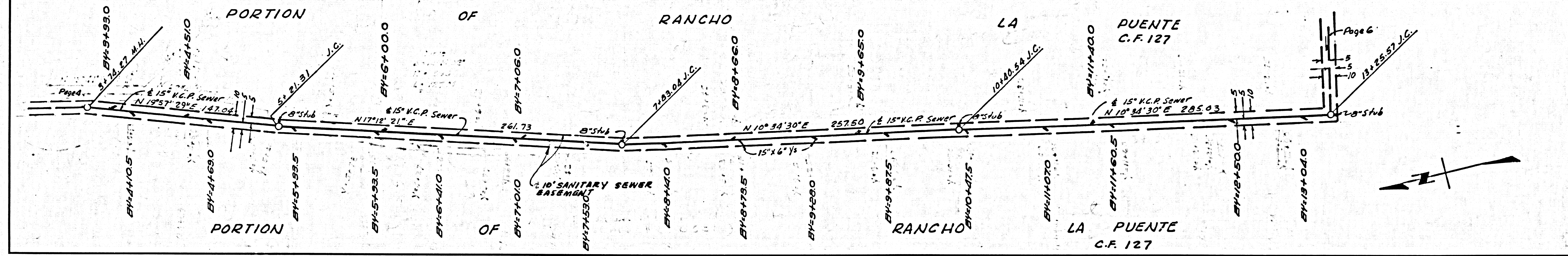
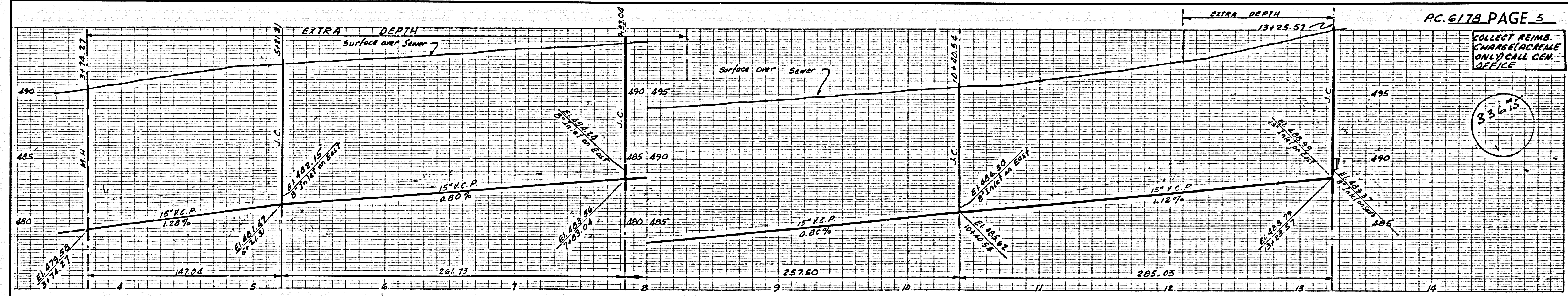
COLLECT CHARGES AS INDICATED

33674



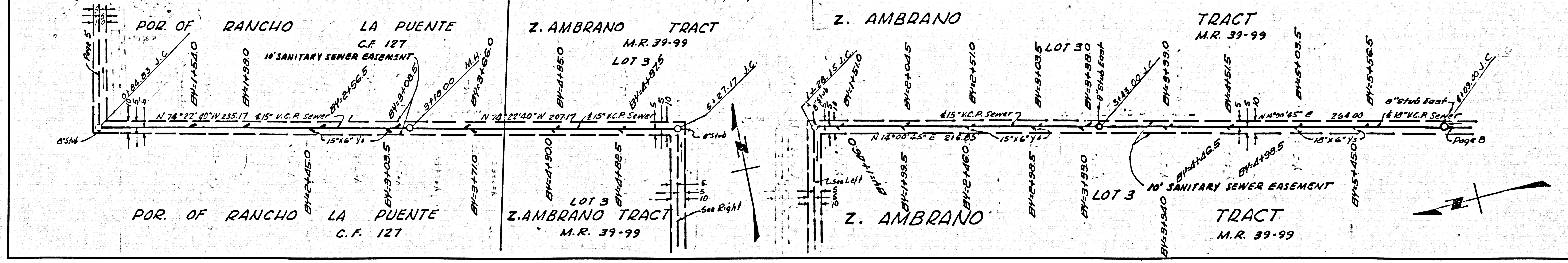
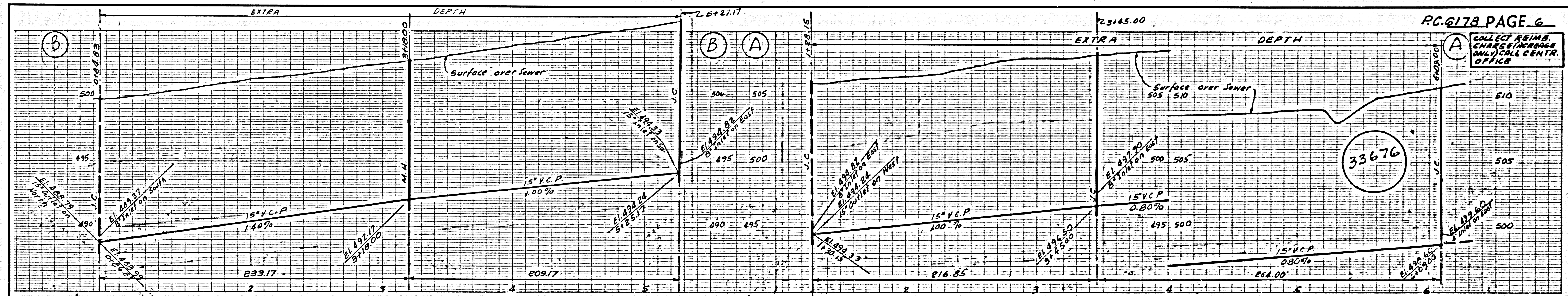
COLLECT REIMB. CHARGE (ACREAGE ONLY) CALL CENTR. OFFICE

33615



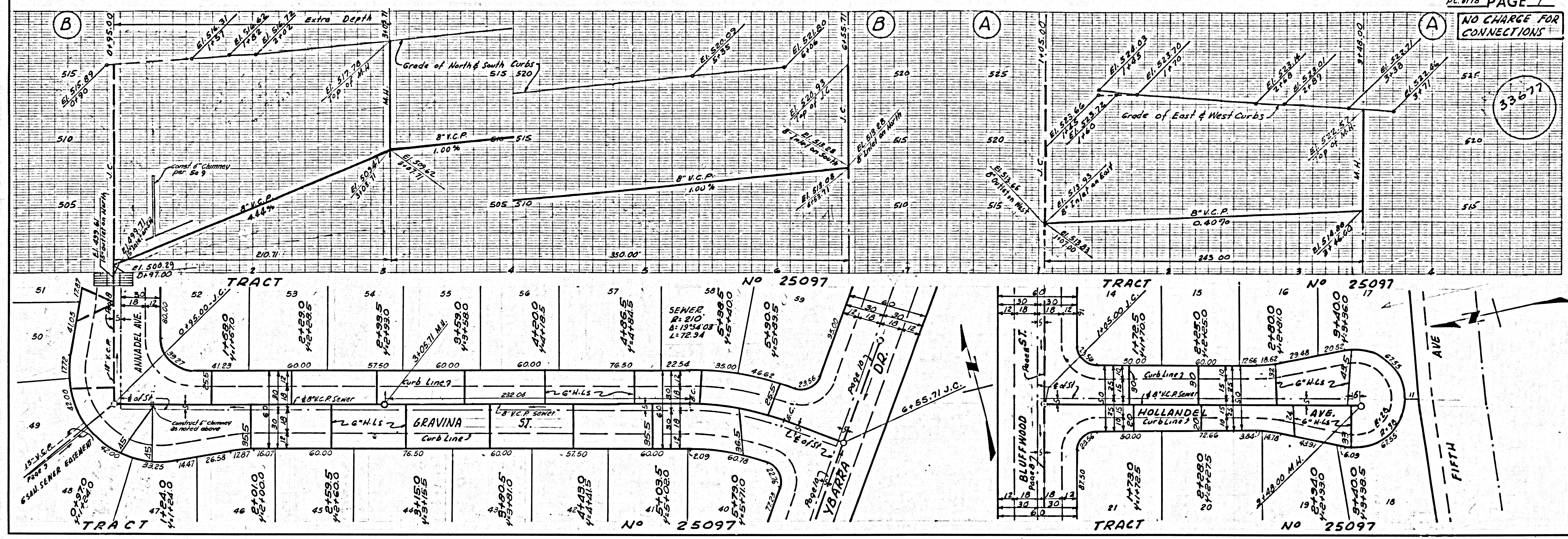
COLLECT REIMB. CHARGE (ACREAGE ONLY) CALL CENTR. OFFICE

33676



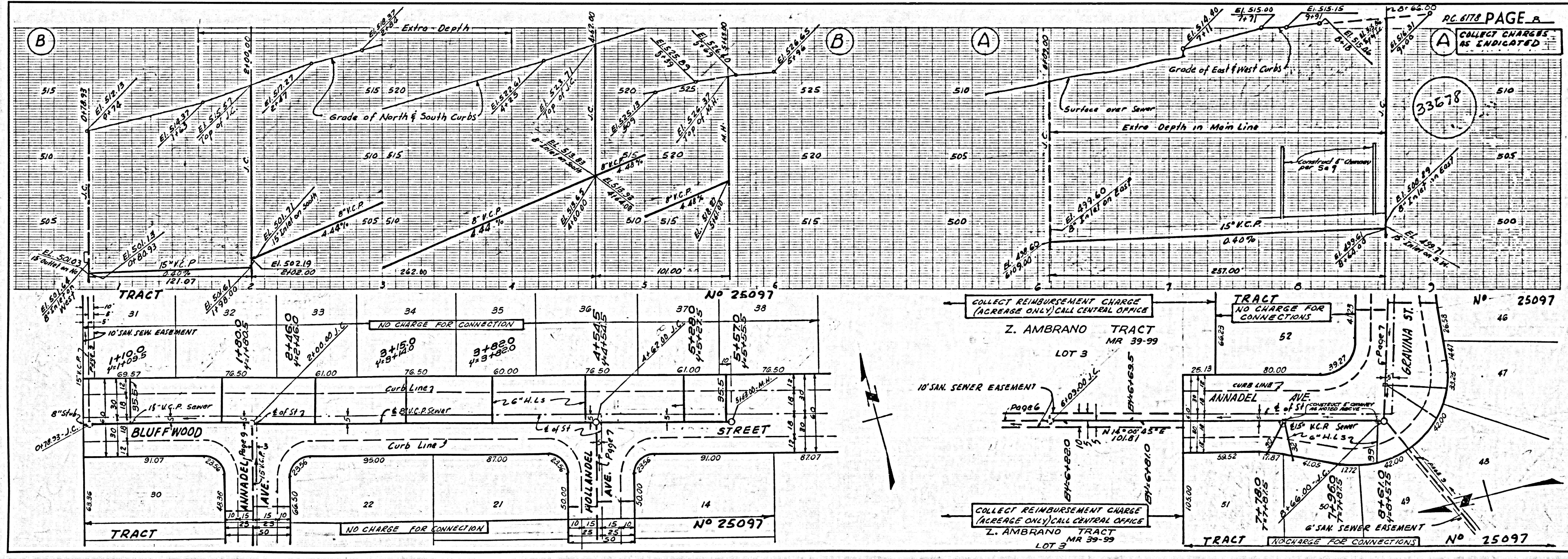
NO CHARGE FOR CONNECTIONS

33677



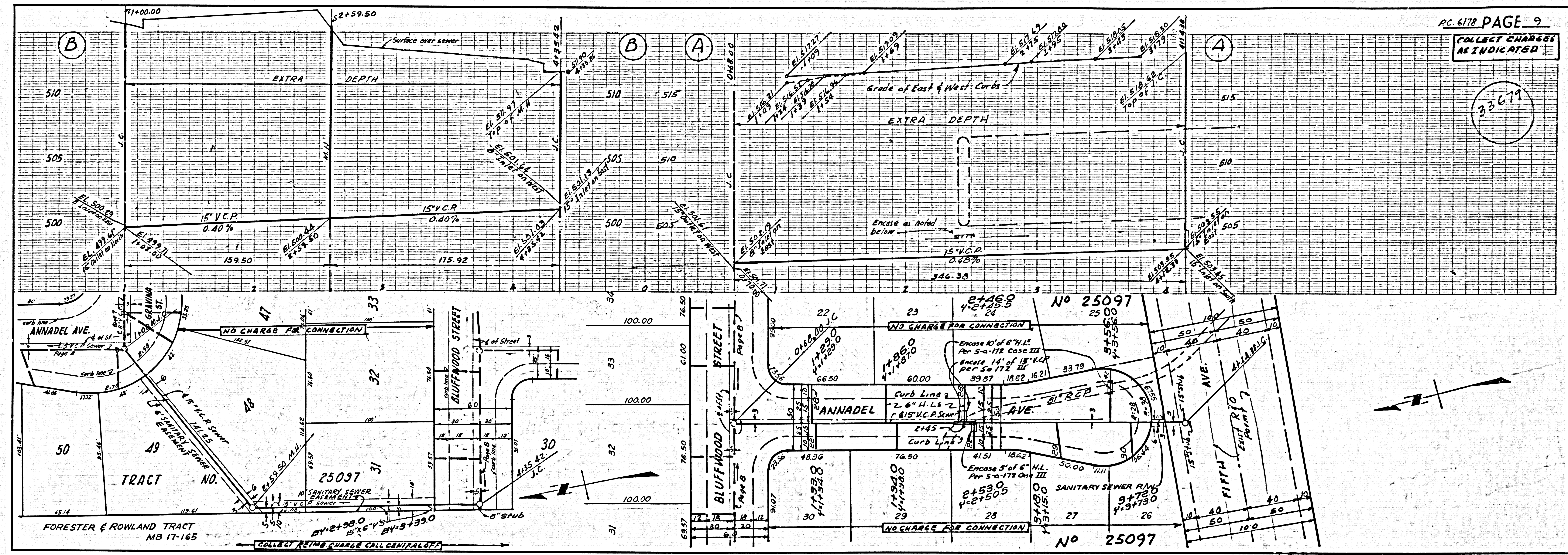
COLLECT CHARGES AS INDICATED

33678



COLLECT CHARGES AS INDICATED

33619



NO CHARGE FOR CONNECTIONS

33680

