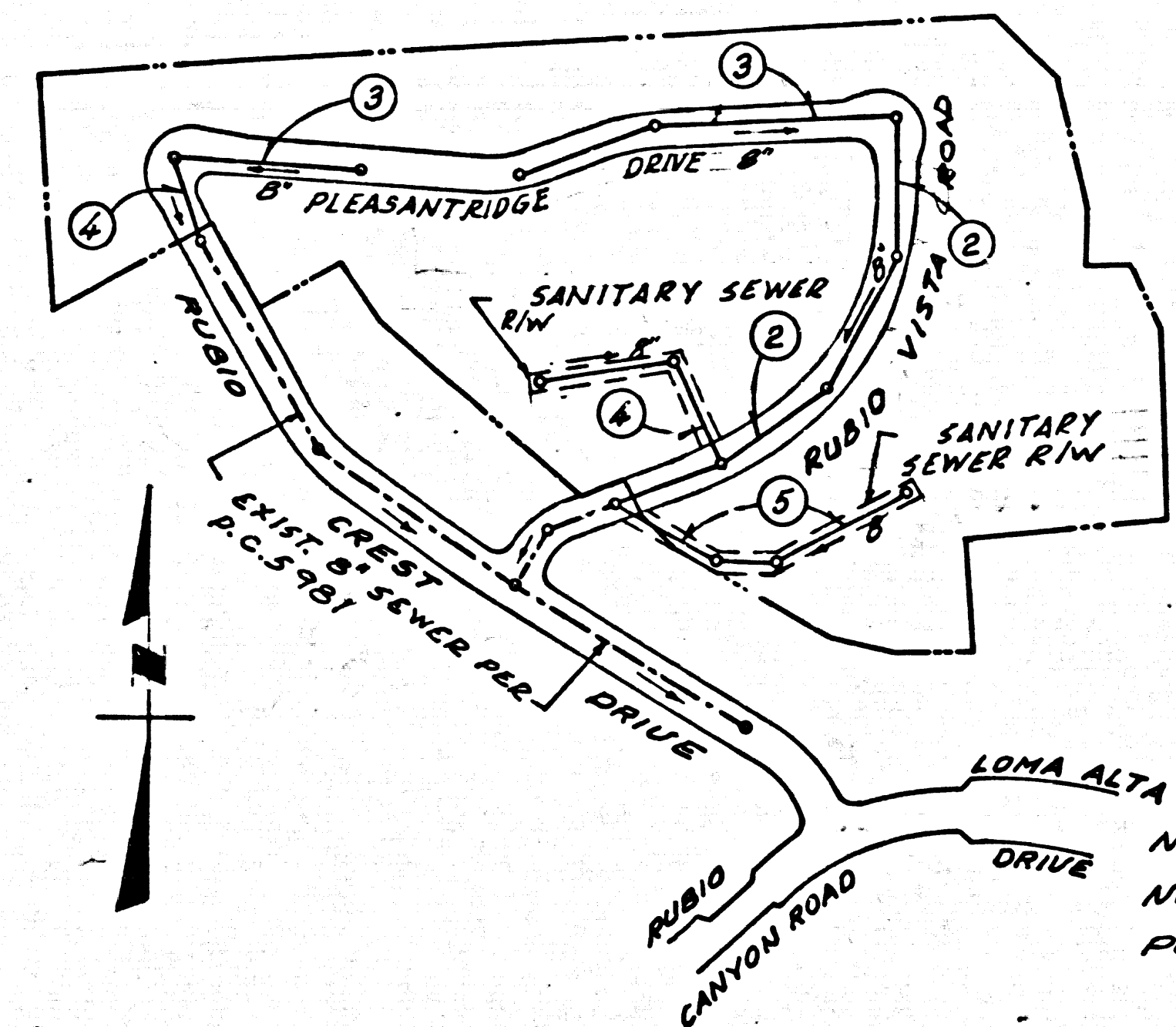


**BENCH MARK:**  
 54 5098 Bl. Spk. N. E. Co. Lake Avenue 1 1/2' S. of Ret. @ N.E. Cor.  
 Wapello Street 1 25' E. & 70' N. of C/L Int. Mark. "A.E. 597A"  
 Pasadena Quad. 1955 Elevation = 1603.144  
 54 5099 R.O. Bl. M. Tag N. E. Co. Lake Avenue 1 1/2' N. of C/L  
 Ret. @ S.E. Corner Wapello Street 1 25' East and 1 36' S.  
 of C/L Intersection  
 Pasadena Quad. 1955 Elevation = 1593.407



INDEX MAP  
 TRACT No 26758  
 SCALE: 1" = 300'  
 P.C. 6181

**REVISION**  
 On page 3A revised road grade and adjusted sewer grade from 3.16% to 4.40% between Sta. 0+00 to 3+39.03. Also adjusted sewer grade from 2.12% to 1.32% from Sta. 3+39.03 to 5+54.35.  
 On page 3B revised road grade and adjusted sewer grade from 3.68% to 10.8% from Sta. 0+00 to 2+56.71.  
 N. J. Brannstedt 10-31-62  
 San Gabriel Valley Regional Engineer Date

DOUBLE SCALE  
 ALTADENA BLDG. DIST. NO. 3

PROFILE ALIGNMENT AND GRADE OF P.C. 6181  
 SANITARY SEWERS PAGE 1  
 TO BE CONSTRUCTED IN J.N. 0357.95

TRACT No 26758  
 PRIVATE CONTRACT NO. 6181

W.S. 88, C-5  
 3 SHEETS; 5 PAGES  
 SCALE: VERT. 1" = 8'  
 HORIZ. 1" = 40' MAY, 1962  
 PREPARED IN THE OFFICES OF  
 MEINTIRE & QUIROS, INC.

32933

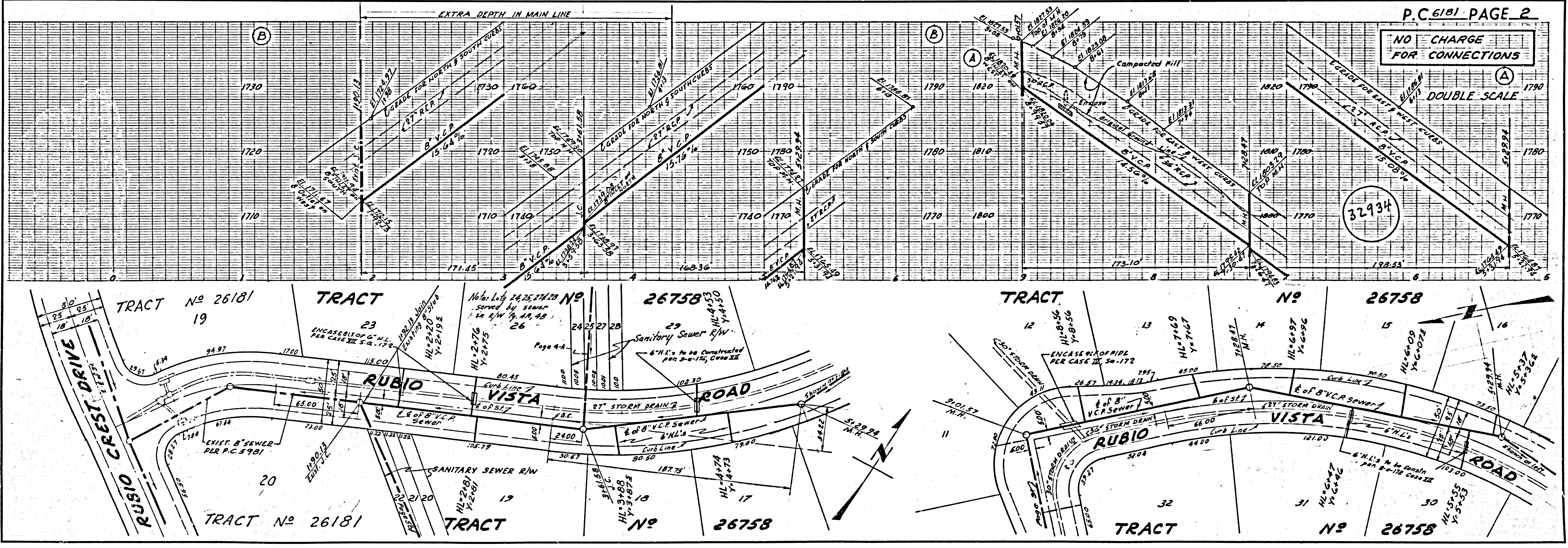
- NOTES:
- PROVIDE STAKES ON THE PROPERTY LINE OR PROPERTY LINES PRODUCED AT RIGHT ANGLES TO THE SEWER LINE AT THE CENTER LINE OF EACH MANHOLE.
  - NO REPRESENTATIVE OF THE COUNTY ENGINEER WILL SURVEY OR LAY OUT ANY PORTION OF THE WORK.
  - THE OWNER OR HIS AUTHORIZED REPRESENTATIVE SHALL FURNISH THE COUNTY ENGINEER WITH GRADE SHEETS AND STATIONING FOR ALL HOUSE LATERALS AND Y BRANCHES AND SHALL PROVIDE STAKES FOR THEM AT THEIR PROPER LOCATIONS WITH STATIONING PLAINLY MARKED. ANY CHANGE IN LOCATION SHALL BE REQUESTED IN WRITING BY THE OWNER OR HIS REPRESENTATIVE.
  - THE PRIVATE ENGINEER SHALL FURNISH THE HOUSE LATERAL GRADE AT THE PROPERTY LINE BELOW THE TOP OF CURB ELEVATION FOR EACH HOUSE LATERAL ON THE GRADE SHEET.
  - NO REVISIONS SHALL BE MADE IN THESE PLANS WITHOUT THE APPROVAL OF THE COUNTY ENGINEER.
  - USE STANDARD MANHOLE FRAMES AND COVERS, S-111, EXCEPT AS NOTED.
  - USE EXTRA STRENGTH PIPE. ALL PIPE IS STANDARD DEPTH EXCEPT AS NOTED.
  - USE CEMENT MORTAR OR "WEDGE-LOCK" OR "SPEED-SEAL" FOR ALL V.C.P. JOINTS PER SPECS, SECS. 16 & 18, FOR MAIN LINE.
  - RESURFACE ALL TRENCH WITHIN PAVED AREA TO MEET L.A. COUNTY ROAD DEPT. OR CALIF. STATE HIGHWAY REQUIREMENTS IN ACCORDANCE WITH PERMITS.
  - ENCASE FOUR FEET OF SEWER AT POINTS OF INTERFERENCE WITH POLES, CASE III, S-172.
  - HOUSE LATERALS TO BE CONSTRUCTED WITH INTERFERENCE AT PROPERTY LINE 6 FEET BELOW CURB GRADE EXCEPT AS NOTED.
  - FOR ALLOWABLE LEAKAGE TEST USE FORMULA NO. 1, SPECS, SEC. 5A.
  - MANHOLE TOPS IN UNIMPROVED RIGHTS-OF-WAY TO SIX INCHES ABOVE FINISHED GRADE.
  - THE CONTRACTOR SHALL NOTIFY THE CONSTRUCTION DIVISION BY TELEPHONE, MADISON 9-474, EXT. 81551, AT LEAST TWENTY-FOUR HOURS BEFORE STARTING ANY WORK UNDER THIS CONTRACT.
  - MANHOLES SHALL BE BRICK SEWER STRUCTURES PER S.E. 104 PRECAST CONCRETE MANHOLES PER S.E. 135 OR S.E. 173 MAY BE USED AS AN ALTERNATE IN LOCATIONS APPROVED BY THE COUNTY ENGINEER.
  - NO CONSTRUCTION SHALL BE PERMITTED IN THE FILLED AREA UNLESS ACCEPTABLE CERTIFICATION IS SUBMITTED TO THE CONSTRUCTION DIVISION OF THE COUNTY ENGINEER'S DEPARTMENT THAT RELATIVE COMPACTION IS GREATER THAN 80%.  
 & IF COMPACTION IS LESS THAN 80% THE SEWER MUST BE CRADLED AS SHOWN ON THE PLANS PER S-116, AND MANHOLE BASE SHALL BE CONSTRUCTED PER S-112.  
 C. IF COMPACTION IS GREATER THAN 80% CRADLING AND SPECIAL M.M. BASE ARE NOT REQUIRED, HOWEVER "WEDGE-LOCK" OR "SPEED SEAL" MUST BE SUBSTITUTED FOR CEMENT MORTAR IN ALL JOINTS IN THE AREAS.
  - STANDARD SPECIFICATIONS DATED MAY 26, 1948 APPLY IN THE CONSTRUCTION OF THIS PROJECT.
  - USE MECHANICAL COMPRESSION JOINTS FOR ALL V.C.P. HOUSE LATERALS PER SPECS, SEC. 16.

NOTE:  
 GRADES TO WHICH THIS IMPROVEMENT IS TO BE CONSTRUCTED ARE SHOWN ON PLANS AND PROFILES. GRADE POINTS FOR TOP OF CURBS, CENTER LINE OF STREETS OR CENTER LINE OF ALLEYS ARE SHOWN BY CIRCLES ON PROFILES. AT ALL POINTS BETWEEN DESIGNATED POINTS THE GRADE SHALL BE ESTABLISHED SO AS TO CONFORM TO A STRAIGHT LINE DRAWN BETWEEN SAID DESIGNATED POINTS.  
 ELEVATIONS ARE IN FEET ABOVE U.S.C. & G.S. SEA LEVEL DATUM OF 1929.  
 THIS DRAWING AND THE DATA HEREON ARE HEREBY MADE A PART OF THE SPECIFICATIONS AND SHALL BE CONSIDERED ONLY IN THE PRESENCE OF THE COUNTY ENGINEER.  
 BEFORE WORK CAN BE STARTED, THE CONTRACTOR MUST OBTAIN A PERMIT TO EXCAVATE IN COUNTY STREETS FROM THE L.A. COUNTY ROAD DEPT., DISTRICT OFFICE NO. 2, AND PAY A FEE TO THE COUNTY ENGINEER, ROOM 310, 108 WEST SECOND STREET, SUFFICIENT TO COVER THE COST OF CONSTRUCTION INSPECTION AND RECORD PLANS.  
 APPROVAL OF THIS PLAN BY THE COUNTY OF LOS ANGELES DOES NOT CONSTITUTE A REPRESENTATION AS TO THE ACCURACY OF THE LOCATION OR THE EXISTENCE OR NON-EXISTENCE OF ANY UNDERGROUND UTILITY PIPE, OR STRUCTURE WITHIN THE LIMITS OF THIS PROJECT. THIS NOTE APPLIES TO ALL PAGES.  
 IF WORK IS TO BE DONE IN A STATE HIGHWAY, A PERMIT MUST BE OBTAINED FROM THE STATE OF CALIFORNIA, DIVISION OF HIGHWAYS, 120 SOUTH SPRING STREET.

COUNTY OF LOS ANGELES, CALIFORNIA  
 APPROVED, JOHN A. LAMBIE, COUNTY ENGINEER APPROVED, J.O. PARKHURST, CHIEF ENGINEER  
 BY: [Signature] ASST. SANITATION ENGINEER BY: [Signature] CHIEF ENGINEER  
 CHECKED BY: [Signature] OFFICE OF COUNTY ENGINEER, REG. C. E. NO. 2804  
 SUBMITTED: N. J. Brannstedt, SAN GABRIEL VALLEY REGIONAL ENGINEER

NO CHARGE FOR CONNECTIONS  
 A. B. Albertson 6/14/62

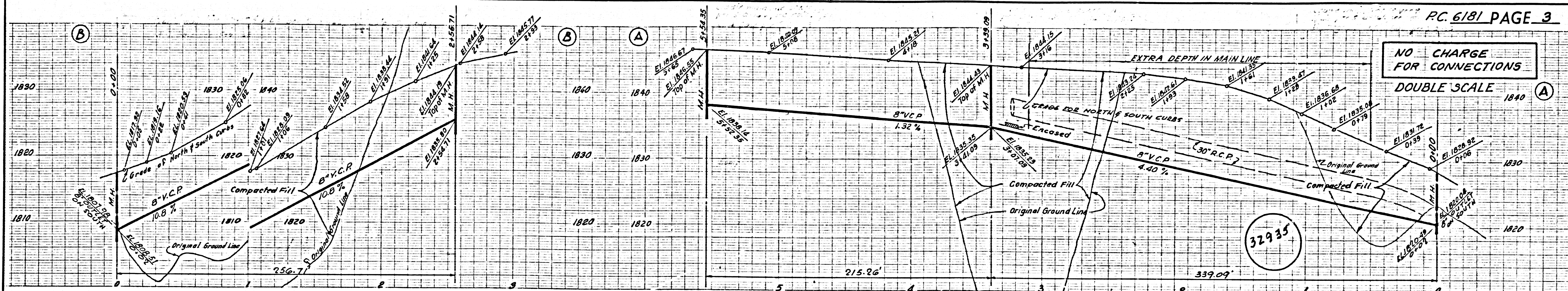
NO CONNECTIONS FOR THE DISPOSAL OF INDUSTRIAL WASTES SHALL BE MADE TO SEWERS SHOWN ON THESE DRAWINGS WITHOUT WRITTEN PERMISSION FROM THE CHIEF ENGINEER AND GENERAL MANAGER OF THE COUNTY SANITATION DISTRICTS.



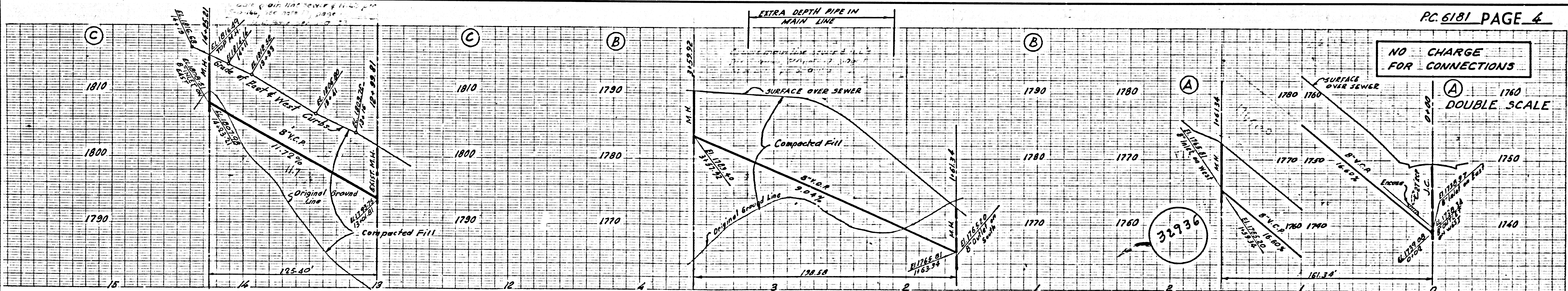
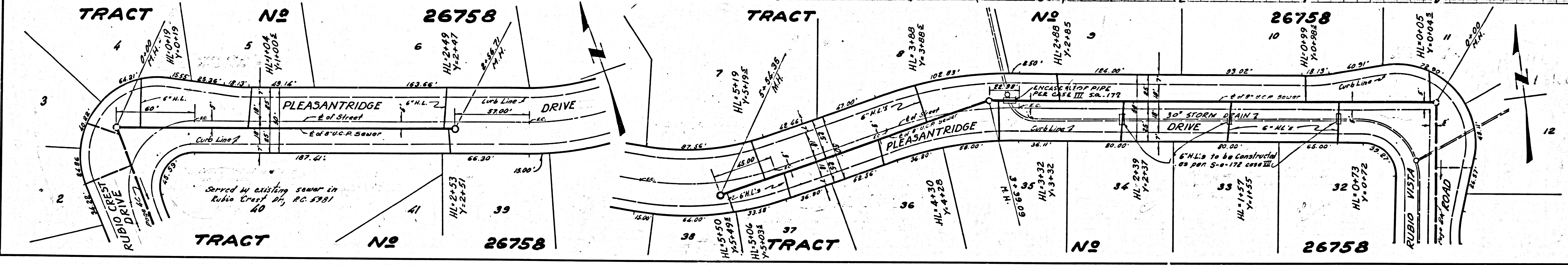
NO CHARGE FOR CONNECTIONS

32934

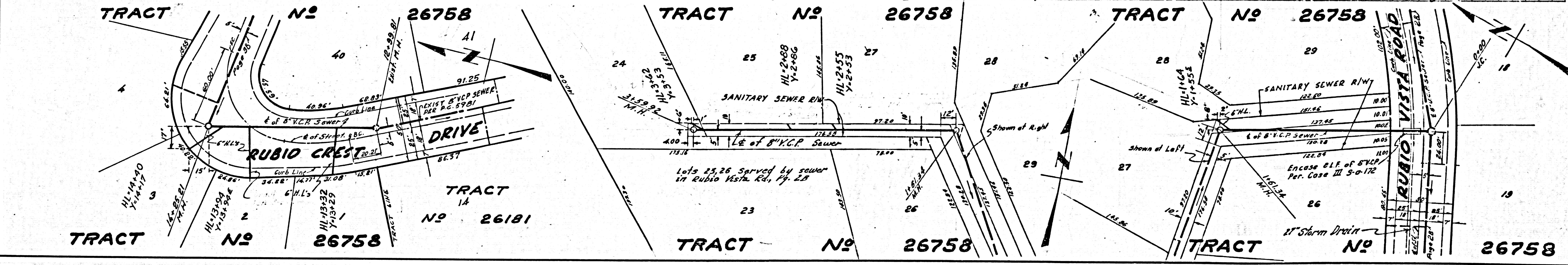
TRACT No 26758



NO CHARGE FOR CONNECTIONS  
DOUBLE SCALE



NO CHARGE FOR CONNECTIONS  
DOUBLE SCALE



PC 6181 TRACT NO 26758

NO CHARGE FOR CONNECTIONS

DOUBLE SCALE

32937

