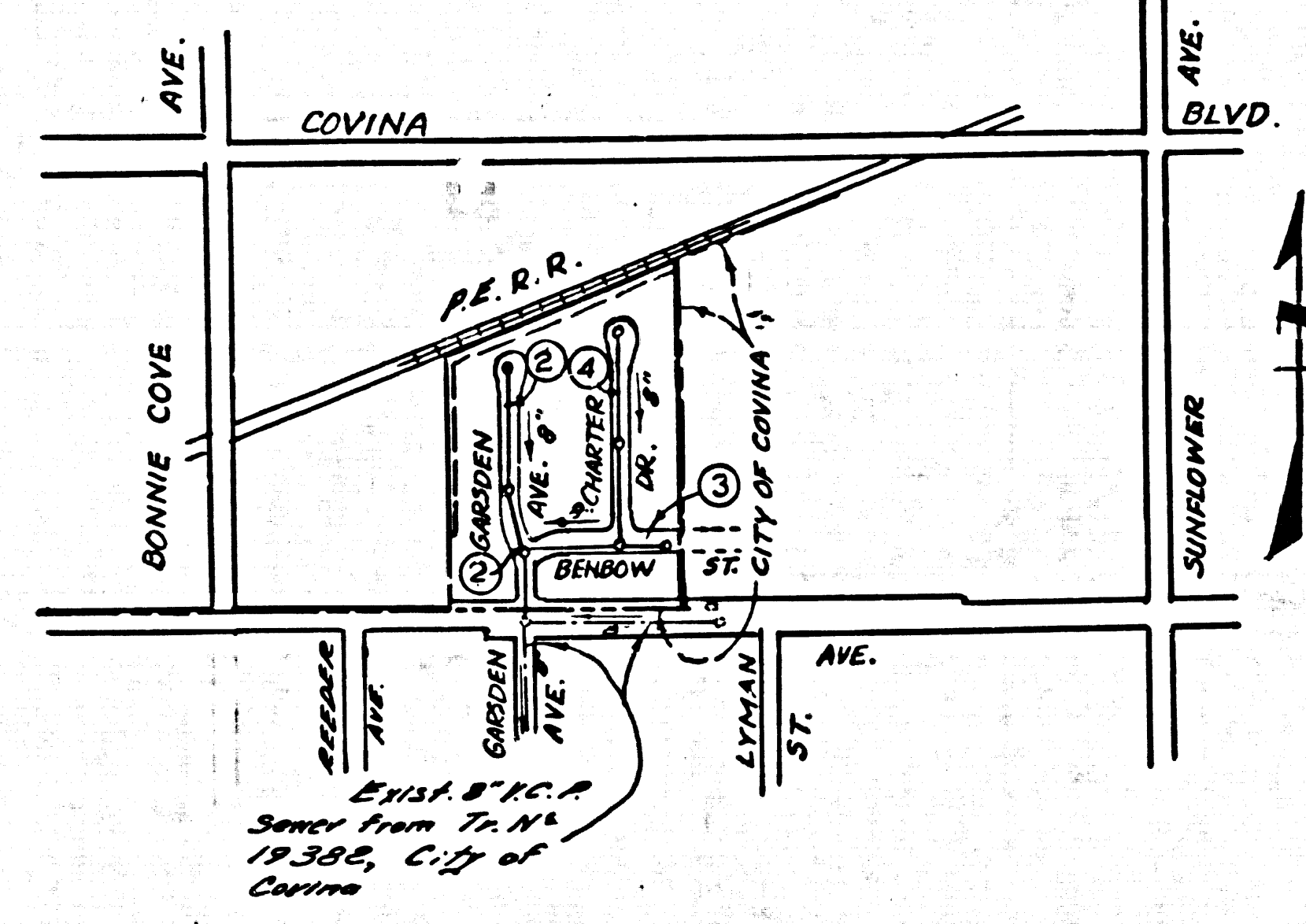


B.M. 58.2019 El 718.328  
 C.S. Mark in well "Cover" @ E  
 Int. Lynn St. & Spruce Ave.  
 San Dimas 1960 Adj.



INDEX MAP  
 SCALE 1" = 600'  
 TRACT NO. 25956  
 P.C. 6182

NO CHARGE FOR CONNECTIONS  
 Gerald X. Kenny 5-2-62

SAN DIMAS BLDG. DIST. NO. 10

PROFILE ALIGNMENT AND GRADE OF P.C. 6182  
 SANITARY SEWERS PAGE 1  
 TO BE CONSTRUCTED IN JN 0357.96

TRACT NO. 25956  
 M.B. 681-40, 41  
 PRIVATE CONTRACT NO. 6182

W.S. 48  
 2 SHEETS; 4 PAGES  
 SCALE: VERT. 1" = 4'  
 HORIZ. 1" = 40'  
 March, 1962  
 PREPARED IN THE OFFICES OF  
 DUTCH HOLZHAUER AND ASSOCIATES  
 7 W. Kellman Ave. Alhambra, Calif. 618-9251  
 By: *D. P. Holzhauser*  
 REG. C.E. NO. 10819

32101

UNDERGROUND STRUCTURES

All underground utilities or structures reported by the owner or others and those shown on the records examined are indicated with their approximate location and extent.  
 The owner by accepting these plans or proceeding with improvements pursuant thereto agrees to assume liability and to hold the contractor harmless for any damages resulting from the existence of underground utilities or structures not reported to the engineer, not indicated on the public records examined, located at variance with that reported or shown on records examined.  
 The contractor is required to take due precautionary measures to protect the utilities or structures shown and any other utilities or structures found at the site. It shall be the contractor's responsibility to notify the owners of the utilities or structures encountered before starting work.

*D. P. Holzhauser*  
 R.C.E. No. 10819

- NOTES:
1. PROVIDE STAKES ON THE PROPERTY LINE OR PROPERTY LINES PRODUCED AT RIGHT ANGLES TO THE SEWER LINE AT THE CENTER LINE OF EACH MANHOLE.
  2. NO REPRESENTATIVE OF THE COUNTY ENGINEER WILL SURVEY OR LAY OUT ANY PORTION OF THE WORK.
  3. THE OWNER OR HIS AUTHORIZED REPRESENTATIVE SHALL FURNISH THE COUNTY ENGINEER WITH GRADE SHEETS AND STATIONING FOR ALL HOUSE LATERALS AND Y BRANCHES AND SHALL PROVIDE STAKES FOR THEM AT THEIR PROPER LOCATIONS WITH STATIONING PLAINLY MARKED. ANY CHANGE IN LOCATION SHALL BE REQUESTED IN WRITING BY THE OWNER OR HIS REPRESENTATIVE.
  4. THE PRIVATE ENGINEER SHALL FURNISH THE HOUSE LATERAL DEPTH AT THE PROPERTY LINE BELOW THE TOP OF CURB ELEVATION FOR EACH HOUSE LATERAL ON THE GRADE SHEET.
  5. NO REVISIONS SHALL BE MADE IN THESE PLANS WITHOUT THE APPROVAL OF THE COUNTY ENGINEER.
  6. USE STANDARD MANHOLE FRAMES AND COVERS, 3-117.
  7. USE EXTRA STRENGTH PIPE ALL AND STANDARD DEPTH EXCEPT AS NOTED.
  8. USE CEMENT ANCHORS, "WEDGE-LOCK" OR "SPEED-SEAL" FOR ALL Y.C.P. JOINTS PER SPECS. 34 & 48.
  9. RESURFACE ALL TRENCH WITHIN PAVED AREA TO MEET L.A. COUNTY ROAD DEPT. OR CALIF. STATE HIGHWAY REQUIREMENTS IN ACCORDANCE WITH PERMITS.
  10. ENCASE FOUR FEET OF SEWER AT 3 INCHES OF INTERFERENCE WITH POLES, CASE III, 3-117.
  11. HOUSE LATERALS TO BE CONSTRUCTED WITH INVERTS AT PROPERTY LINE 6 FEET BELOW CURB GRADE EXCEPT AS NOTED.
  12. MANHOLES SHALL BE BUILT TO MEET STANDARD SPECIFICATIONS PER 3-117 AND 3-118 EXCEPT MANHOLES PER 3-118 OR 3-119 WHICH BE BUILT TO MEET L.A. COUNTY ROAD DEPT. OR CALIF. STATE HIGHWAY REQUIREMENTS.
  13. FOR ALLOWABLE LEAKAGE TEST USE FORMULA NO. 1 SPECS. SEC. 54.
  14. MANHOLE TOPS IN UNIMPROVED RIGHTS-OF-WAY TO BE SIX INCHES ABOVE FINISHED GRADE.
  15. THE CONTRACTOR SHALL NOTIFY THE CONSTRUCTION DIVISION BY TELEPHONE, MADISON 3-4747, EXT. 81331 AT LEAST TWENTY-FOUR HOURS BEFORE STARTING ANY WORK UNDER THIS CONTRACT.
  16. STANDARD SPECIFICATIONS DATED OCTOBER 26, 1961, SHALL BE USED IN THE CONSTRUCTION OF THIS PROJECT.
  17. CONTRACTOR MUST OBTAIN A PERMIT FROM THE CITY OF COVINA BEFORE EXCAVATION IN CITY STREETS.

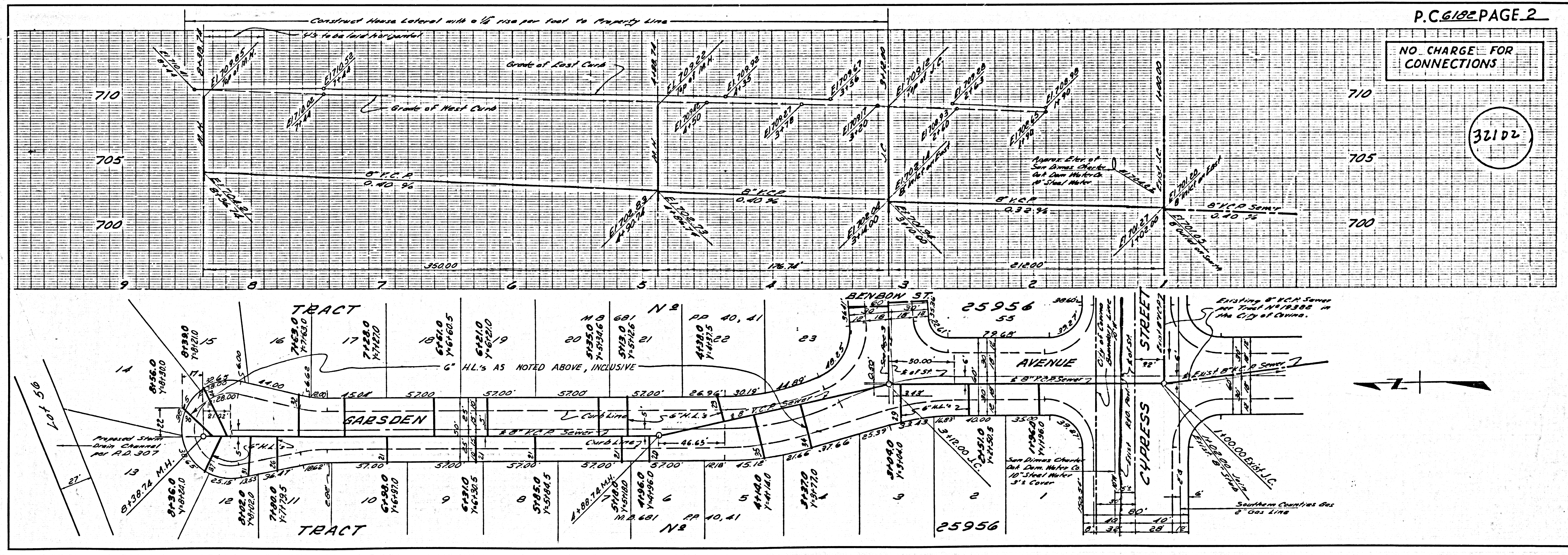
NO CONNECTIONS FOR THE DISPOSAL OF INDUSTRIAL WASTES SHALL BE MADE TO SEWERS SHOWN ON THESE DRAWINGS WITHOUT WRITTEN PERMISSION FROM THE CHIEF ENGINEER AND GENERAL MANAGER OF THE COUNTY SANITATION DISTRICTS.

Approved: *Paul M. Vogel* 5/2/62  
 Public Works Director  
 City of Covina

NOTE:  
 GRADES TO WHICH THIS IMPROVEMENT IS TO BE CONSTRUCTED ARE SHOWN ON PLANS AND PROFILES. GRADE POINTS FOR TOP OF CURBS CENTER LINE OF STREETS OR CENTER LINE OF ALLEYS ARE SHOWN BY CIRCLES ON PROFILES. AT ALL POINTS BETWEEN DESIGNATED POINTS THE GRADE SHALL BE ESTABLISHED SO AS TO CONFORM TO A STRAIGHT LINE DRAWN BETWEEN SAID DESIGNATED POINTS.  
 ELEVATIONS ARE IN FEET ABOVE U.S.C. & G.S. SEA LEVEL DATUM OF 1929.  
 THIS DRAWING AND THE DATA HEREON ARE HEREBY MADE A PART OF THE SPECIFICATIONS.  
 WORK SHALL BE CONSTRUCTED ACCORDING TO SPECIFICATIONS ON FILE IN THE OFFICE OF THE COUNTY ENGINEER AND SHALL BE PROSECUTED ONLY IN THE PRESENCE OF THE COUNTY ENGINEER.  
 BEFORE WORK CAN BE STARTED, THE CONTRACTOR MUST OBTAIN A PERMIT TO EXCAVATE IN COUNTY STREETS FROM THE L.A. COUNTY ROAD DEPT., DISTRICT OFFICE NO. 1, AND PAY A FEE TO THE COUNTY ENGINEER, ROOM 310, 108 W. SECOND STREET SUFFICIENT TO COVER THE COST OF CONSTRUCTION INSPECTION AND RECORD PLANS.  
 APPROVAL OF THIS PLAN BY THE COUNTY OF LOS ANGELES DOES NOT CONSTITUTE A REPRESENTATION AS TO THE ACCURACY OF THE LOCATION OF OR THE EXISTENCE OR NON-EXISTENCE OF ANY UNDERGROUND UTILITY PIPE, OR STRUCTURE WITHIN THE LIMITS OF THIS PROJECT. THIS NOTE APPLIES TO ALL PAGES.  
 IF WORK IS TO BE DONE IN A STATE HIGHWAY, A PERMIT MUST BE OBTAINED FROM THE STATE OF CALIFORNIA, DIVISION OF HIGHWAYS, 120 SOUTH SPRING STREET.

COUNTY OF LOS ANGELES, CALIFORNIA  
 APPROVED, JOHN A. LAMBIE, COUNTY ENGINEER  
 APPROVED, *D. P. Holzhauser*, DISTRICT CHIEF ENGINEER  
 BY: *Paul M. Vogel*, ASST. SANITATION ENGINEER  
 BY: *D. P. Holzhauser*, OFFICE ENGINEER  
 CHECKED BY: *St. O. W. 5-4-62*  
 OFFICE OF COUNTY ENGINEER, REG. C. E. NO. 9406

Submitted: *W. C. Bouldin* 5-4-62  
 San Dimas Regional Engineer



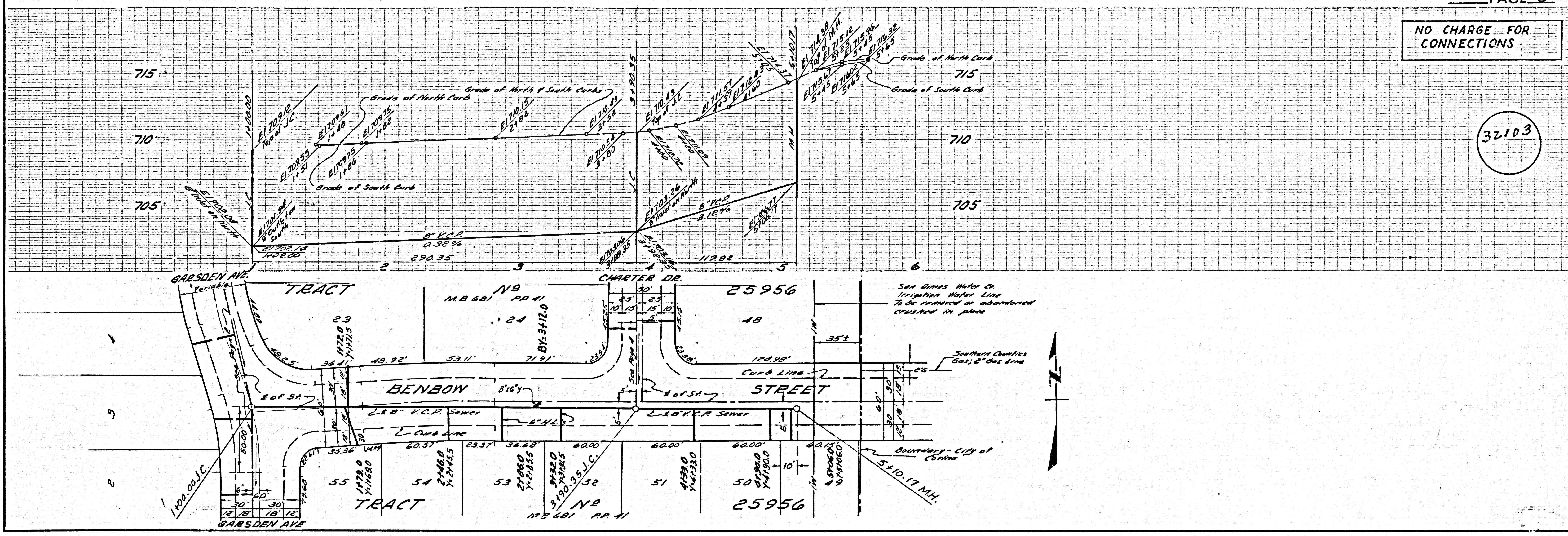
P.C. 6182 PAGE 2

NO CHARGE FOR CONNECTIONS

32102

NO CHARGE FOR CONNECTIONS

32103



NO CHARGE FOR CONNECTIONS

32104

