

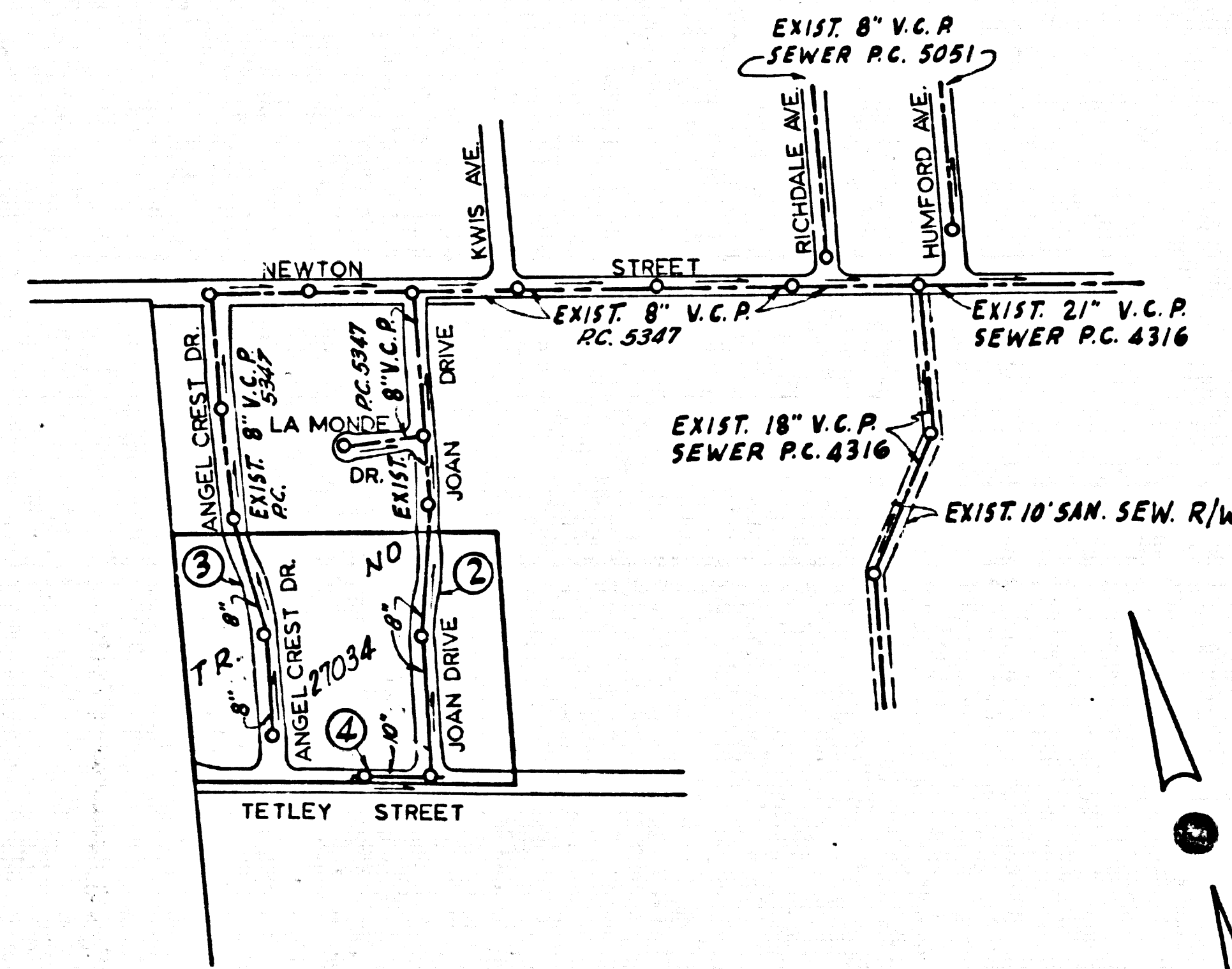
DOUBLE SCALE  
PUENTE BLDG. DIST. NO. 2

PROFILE ALIGNMENT AND GRADE OF P.C. 6183  
SANITARY SEWERS PAGE 1  
TO BE CONSTRUCTED IN J.N.035797

TRACT No 27034  
PRIVATE CONTRACT NO. 6183

W.S. 38  
2 SHEETS; 4 PAGES  
SCALE: VERT. 1" = 4'  
HORIZ. 1" = 40' FEB. 1962  
PREPARED IN THE OFFICES OF  
McDANIEL ENGINEERING CO.  
By: *Al. J. ...*  
REG. C. E. NO. 9808  
FOR LEGEND SEE PLAN NO. S-A-64

32474



INDEX MAP  
TRACT No 27034  
SCALE: 1" = 400'  
P.C. 6183

B.M. 56.1019 L.E.B.N. IN S.C.B. OF NEWTON ST. ± 9' WEST OF ENT. TO PLAY YARD. ± 98' W. OF KWIS AVE. ± 20' S. & NEWTON ST. ELEVATION 420.294. (WHITTIER QUAD 1955 ADJ.)

- NOTES:
1. PROVIDE STAKES ON THE PROPERTY LINE OR PROPERTY LINES PRODUCED AT RIGHT ANGLES TO THE SEWER LINE AT THE CENTER LINE OF EACH MANHOLE.
  2. NO REPRESENTATIVE OF THE COUNTY ENGINEER WILL SURVEY OR LAY OUT ANY PORTION OF THE WORK.
  3. THE OWNER OR HIS AUTHORIZED REPRESENTATIVE SHALL FURNISH THE COUNTY ENGINEER WITH GRADE SHEETS AND STATIONINGS FOR ALL HOUSE LATERALS AND Y BRANCHES AND SHALL PROVIDE STAKES FOR THEM AT THEIR PROPER LOCATIONS WITH STATIONINGS PLAINLY MARKED. ANY CHANGE IN LOCATION SHALL BE REQUESTED IN WRITING BY THE OWNER OR HIS REPRESENTATIVE.
  4. THE PRIVATE ENGINEER SHALL FURNISH THE HOUSE LATERAL DEPTH AT THE PROPERTY LINE BELOW THE TOP OF CURB ELEVATION FOR EACH HOUSE LATERAL ON THE GRADE SHEET.
  5. NO REVISIONS SHALL BE MADE IN THESE PLANS WITHOUT THE APPROVAL OF THE COUNTY ENGINEER.
  6. USE STANDARD MANHOLE FRAMES AND COVERS, 3'-11" DEPTH AS NOTED.
  7. USE EXTRA STRENGTH PIPE ALL PIPE STANDARD DEPTH, EXCEPT AS NOTED.
  8. USE CEMENT MORTAR OR "WEDGE-LOCK" OR "SPREAD-SEAL" FOR ALL V.C.A. JOINTS PER SPECS. SECS. 14 & 48.
  9. RESURFACE ALL TRENCH WITHIN PAVED AREA TO MEET L.A. COUNTY ROAD DEPT. OR CALIF. STATE HIGHWAY REQUIREMENTS IN ACCORDANCE WITH PERMITS.
  10. ENCASE FOUR FEET OF SEWER AT POINTS OF INTERFERENCE WITH POLES, CASE III, 5-10-172.
  11. HOUSE LATERALS TO BE CONSTRUCTED WITH INVERTS AT PROPERTY LINE 6 FEET BELOW CURB GRADE.
  12. MANHOLES SHALL BE BRICK SEWER STRUCTURES PER S-10-A. PRECAST CONCRETE MANHOLES PER S-10-135 OR S-10-173 MAY BE USED AS AN ALTERNATE IN LOCATIONS APPROVED BY THE COUNTY ENGINEER.
  13. FOR ALLOWABLE LEAKAGE TEST USE FORMULA NO. 1, SPECS. SEC. 84.
  14. MANHOLE TOPS IN UNIMPROVED RIGHTS-OF-WAY TO BE SIX INCHES ABOVE FINISHED GRADE.
  15. THE CONTRACTOR SHALL NOTIFY THE CONSTRUCTION DIVISION BY TELEPHONE, MADISON 5-470, AT LEAST TWENTY-FOUR HOURS BEFORE STARTING ANY WORK UNDER THIS CONTRACT.
  16. STANDARD SPECIFICATIONS DATED OCTOBER 1959 APPLY IN THE CONSTRUCTION OF THIS PROJECT.
  17. FIGURES IN CIRCLES INDICATE THE STATIONS AT WHICH THE HOUSE LATERALS ARE TO BE BUILT.

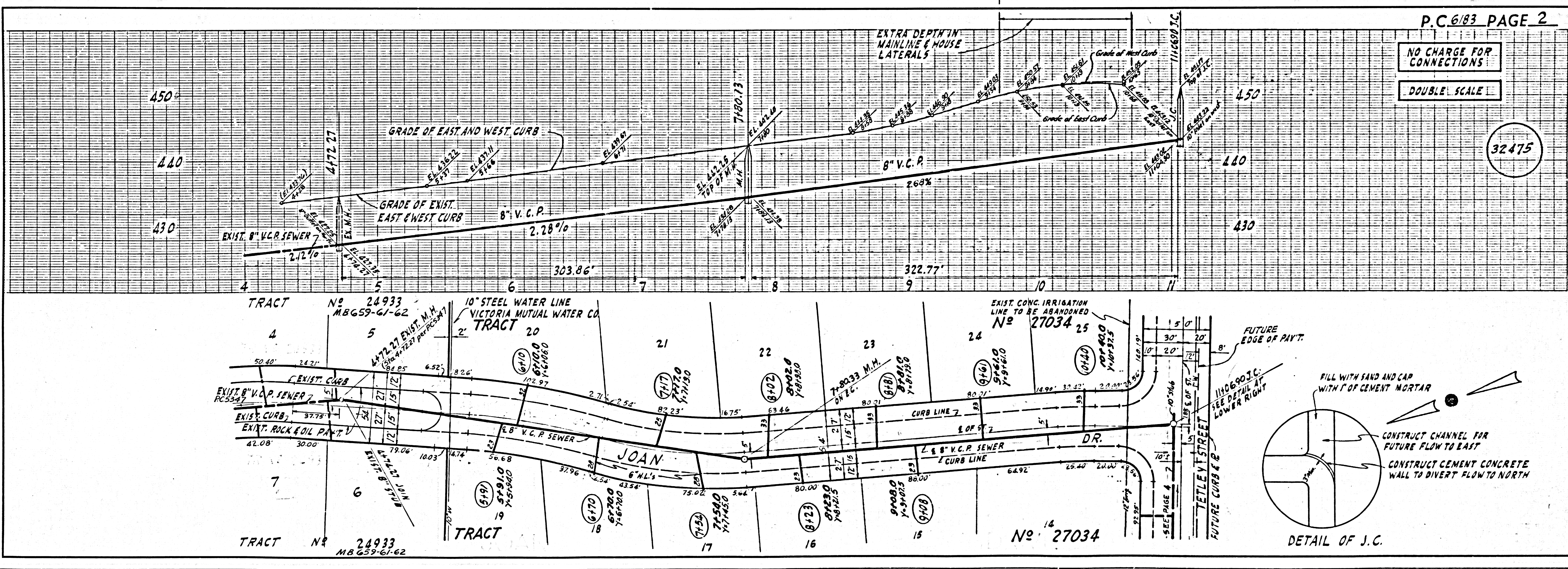
NOTE:  
GRADES TO WHICH THIS IMPROVEMENT IS TO BE CONSTRUCTED ARE SHOWN ON PLANS AND PROFILES. GRADE POINTS FOR TOP OF CURBS, CENTER LINE OF STREETS, OR CENTER LINE OF ALLEYS ARE SHOWN BY CIRCLES ON PROFILES AT ALL POINTS BETWEEN DESIGNATED POINTS THE GRADE SHALL BE ESTABLISHED SO AS TO CONFORM TO A STRAIGHT LINE DRAWN BETWEEN SAID DESIGNATED POINTS.  
ELEVATIONS ARE IN FEET ABOVE U.S.C. & G.S. SEA LEVEL DATUM OF 1929.  
THIS DRAWING AND THE DATA HEREON ARE HEREBY MADE A PART OF THE SPECIFICATIONS.  
WORK SHALL BE CONSTRUCTED ACCORDING TO SPECIFICATIONS ON FILE IN THE OFFICE OF THE COUNTY ENGINEER AND SHALL BE PROSECUTED ONLY IN THE PRESENCE OF THE COUNTY ENGINEER.  
BEFORE WORK CAN BE STARTED, THE CONTRACTOR MUST OBTAIN A PERMIT TO EXCAVATE IN COUNTY STREETS FROM THE L.A. COUNTY ROAD DEPT., DISTRICT OFFICE NO. 1, AND PAY A F.E.E. TO THE COUNTY ENGINEER, ROOM 314 COUNTY ENGINEER BUILDING, 108 W. 2ND ST. L.A., SUFFICIENT TO COVER THE COST OF CONSTRUCTION INSPECTION AND RECORD PLANS.  
APPROVAL OF THIS PLAN BY THE COUNTY OF LOS ANGELES DOES NOT CONSTITUTE A REPRESENTATION AS TO THE ACCURACY OF THE LOCATION OF OR THE EXISTENCE OR NON-EXISTENCE OF ANY UNDERGROUND UTILITY PIPE, OR STRUCTURE WITHIN THE LIMITS OF THIS PROJECT. THIS NOTE APPLIES TO ALL PAGES.  
IF WORK IS TO BE DONE IN A STATE HIGHWAY, A PERMIT MUST BE OBTAINED FROM THE STATE OF CALIFORNIA, DIVISION OF HIGHWAYS, 120 SOUTH SPRING STREET.

COUNTY OF LOS ANGELES, CALIFORNIA  
APPROVED, JOHN A. LAMBIE, COUNTY ENGINEER APPROVED, J.D. PARKIN/187 CHIEF ENGINEER  
CO. SAN. DIST. NO. 21  
BY: *[Signature]* SANITATION ENGINEER BY: *[Signature]* OFFICE ENGINEER  
CHECKED BY: *[Signature]*  
OFFICE OF COUNTY ENGINEER, REG. C. E. NO. 3046

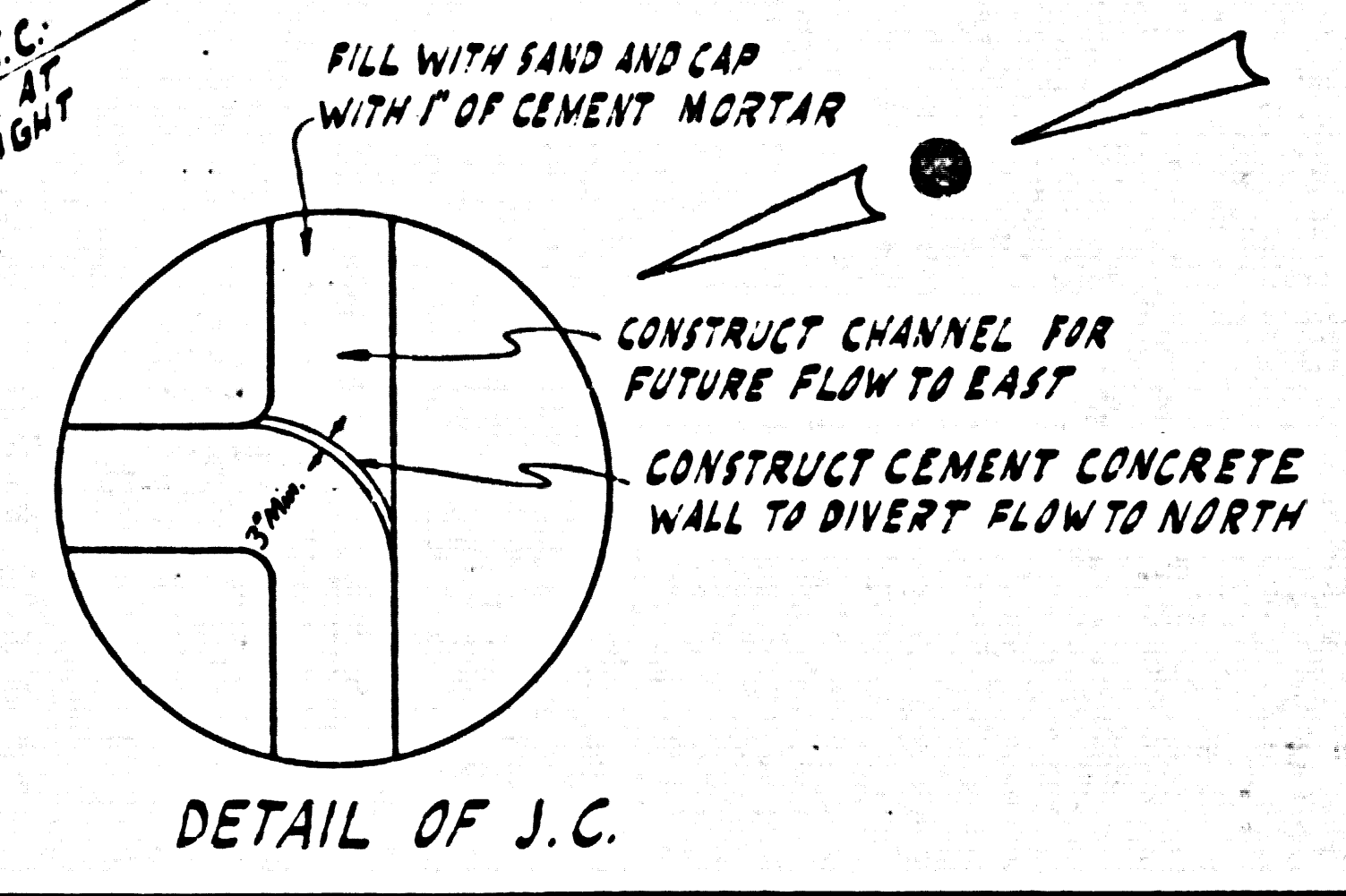
COLLECT CHARGES AS INDICATED  
*[Signature]* 4-23-62

NO CONNECTIONS FOR THE DISPOSAL OF INDUSTRIAL WASTES SHALL BE MADE TO SEWERS SHOWN ON THESE DRAWINGS WITHOUT WRITTEN PERMISSION FROM THE CHIEF ENGINEER AND GENERAL MANAGER OF THE COUNTY SANITATION DISTRICTS.

Submitted: *[Signature]*  
SAN C MAS REGIONAL ENGINEER



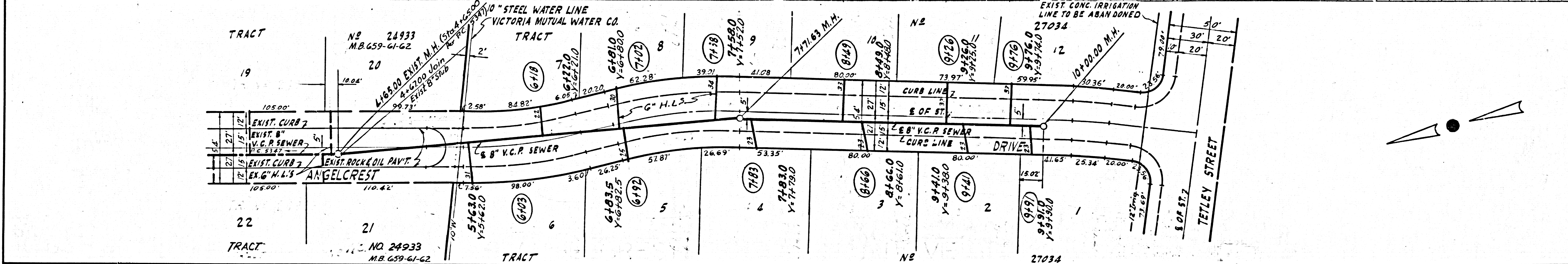
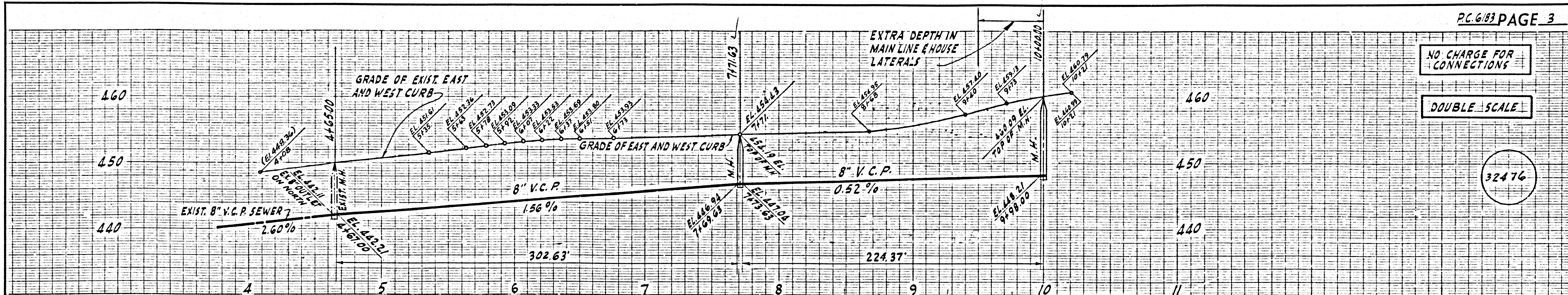
P.C. 6183 PAGE 2  
NO CHARGE FOR CONNECTIONS  
DOUBLE SCALE  
32475



NO CHARGE FOR CONNECTIONS

DOUBLE SCALE

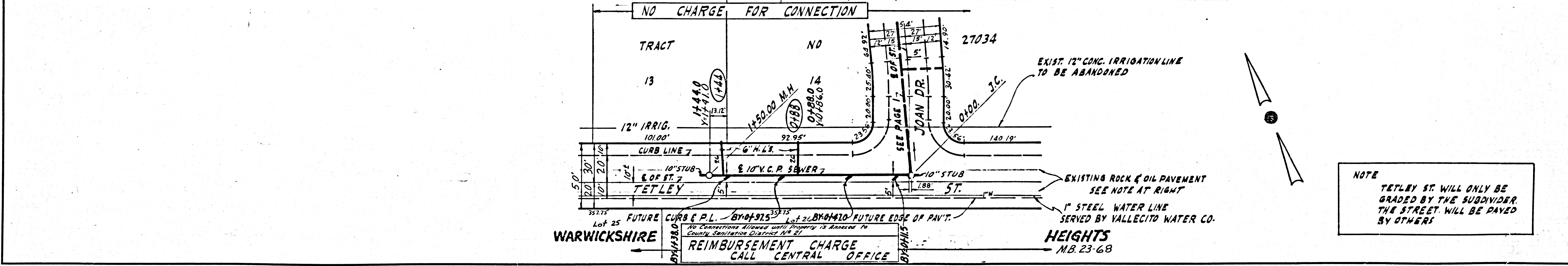
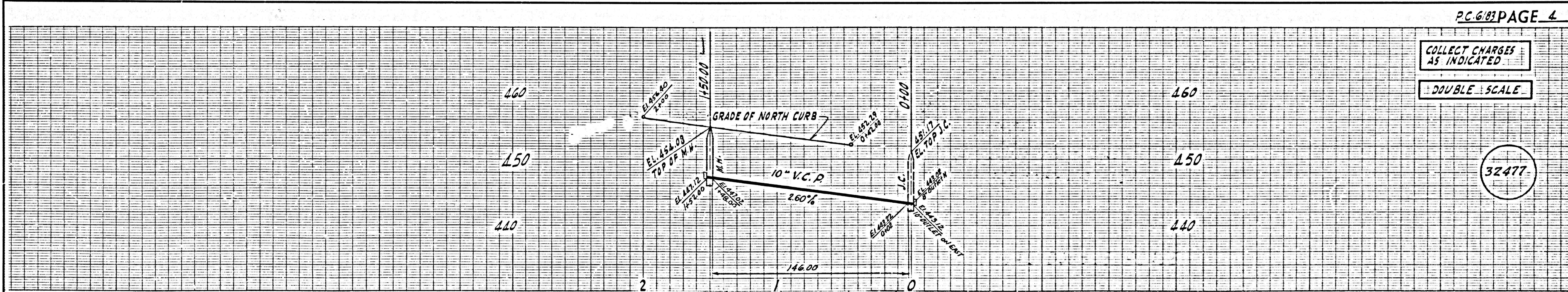
32476



COLLECT CHARGES AS INDICATED

DOUBLE SCALE

32477



NOTE  
TETLEY ST. WILL ONLY BE GRADED BY THE SUBDIVIDER. THE STREET WILL BE PAID BY OTHERS

NO CHARGE FOR CONNECTION  
REIMBURSEMENT CHARGE CALL CENTRAL OFFICE  
HEIGHTS M.B. 23-68