

GLENDORA BLDG. DIST. NO. 10.04
SAN DIMAS BLDG. DIST. NO. 10

PROFILE ALIGNMENT AND GRADE OF
SANITARY SEWERS PAGE 1
TO BE CONSTRUCTED IN
P.C. 6186
J.N.O 358.00

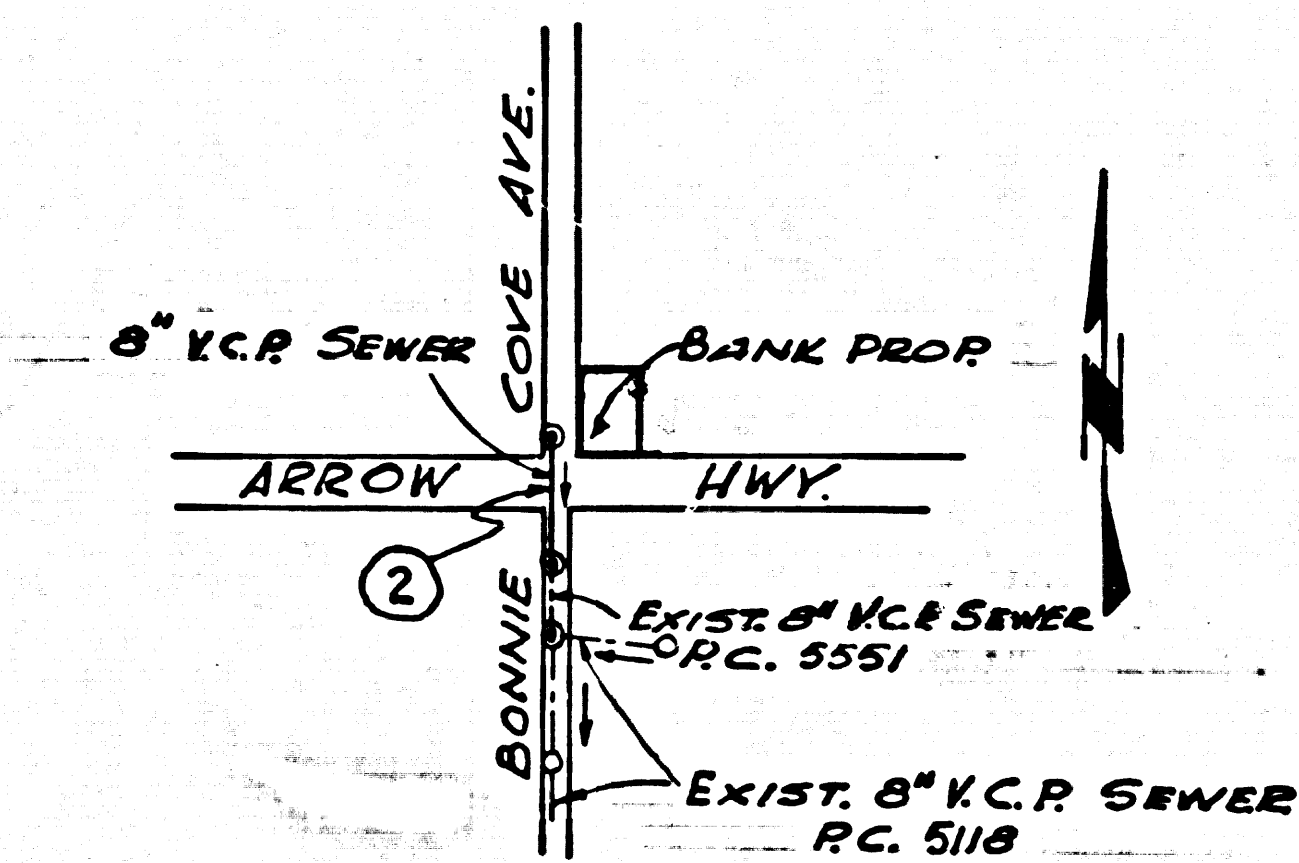
BONNIE COVE AVENUE &
ACROSS ARROW HWY.
PRIVATE CONTRACT NO. 6186

w.s. 48
1 SHEET OF 2 PAGES
SCALE: VERT. 1" = 4'
HORIZ. 1" = 40'
APRIL, 1962
PREPARED IN THE OFFICES OF
I.W.M. D. COFFEY ASSOCIATES, INC.
409 50. OXLEY LOS ANGELES 14
By James J. Coffey REG. C. E. NO. 6359

32257

B.M. S.G. 260 ELEV 751.320 (1955)
L & B.N. IN CONC. RET. WALL 230' E. OF USE #20661
& 2' 52" N. OF ARROW HWY. SAN DIMAS QUAD.

- NOTES:
1. PROVIDE STAKES ON THE PROPERTY LINE OR PROPERTY LINES PRODUCED AT RIGHT ANGLES TO THE SEWER LINE AT THE CENTER LINE OF EACH MANHOLE.
 2. NO REPRESENTATIVE OF THE COUNTY ENGINEER WILL SURVEY OR LAY OUT ANY PORTION OF THE WORK.
 3. THE OWNER OR HIS AUTHORIZED REPRESENTATIVE SHALL FURNISH THE COUNTY ENGINEER WITH GRADE SHEETS AND STATIONING FOR ALL HOUSE LATERALS AND Y BRANCHES AND SHALL PROVIDE STAKES FOR THEM AT THEIR PROPER LOCATIONS WITH STATIONING PLAINLY MARKED. ANY CHANGE IN LOCATION SHALL BE REQUESTED IN WRITING BY THE OWNER OR HIS REPRESENTATIVE.
 4. THE PRIVATE ENGINEER SHALL FURNISH THE HOUSE LATERAL DEPTH AT THE PROPERTY LINE BELOW THE TOP OF CURB ELEVATION FOR EACH HOUSE LATERAL ON THE GRADE SHEET.
 5. NO REVISIONS SHALL BE MADE IN THESE PLANS WITHOUT THE APPROVAL OF THE COUNTY ENGINEER.
 6. USE STANDARD MANHOLE FRAMES AND COVERS, 24" DIA., 24" HIGH.
 7. USE EXTRA STRENGTH PIPE UNLESS OTHERWISE SPECIFIED. ALL PIPE STANDARD DEPTH.
 8. USE "VEE-LOCK" OR "SPEED-SEAL" FOR ALL V.C.P. JOINTS PER SPEC., SECS. 34 & 35.
 9. RESURFACE ALL TRENCH WITHIN RAISED AREA TO MEET L.A. COUNTY ROAD DEPT. OR CALIF. STATE HIGHWAY REQUIREMENTS IN ACCORDANCE WITH PERMITS.
 10. ENCASE FOUR FEET OF SEWER AT POINTS OF INTERFERENCE WITH POLES. CASE III, 2-172.
 11. HOUSE LATERALS TO BE CONSTRUCTED WITH 1/4" RISE PER FT. TO PROPERTY LINE UNLESS OTHERWISE SPECIFIED.
 12. ALL STRUCTURES SHALL BE BRICK SEWER STRUCTURES 2-174 UNLESS OTHERWISE SPECIFIED. PRECAST CONCRETE MANHOLES PER 2-175 (OR 2-173) SHALL BE USED UNLESS OTHERWISE SPECIFIED IN LOCATIONS APPROVED BY THE COUNTY ENGINEER.
 13. FOR ALLOWABLE LEAKAGE TEST USE FORMULA NO. 1-101, SPEC., SEC. 34.
 14. MANHOLE TOPS IN UNIMPROVED RIGHTS-OF-WAY TO BE SIX INCHES ABOVE FINISHED GRADE.
 15. THE CONTRACTOR SHALL NOTIFY THE CONSTRUCTION DIVISION BY TELEPHONE, MADISON 5-4749, EXT. 815241 LEAST TWENTY-FOUR HOURS BEFORE STARTING ANY WORK UNDER THIS CONTRACT.
 16. STANDARD SPECIFICATIONS DATED OCTOBER 25, 1961 APPLY IN THE CONSTRUCTION OF THIS PROJECT.
- NO CONNECTIONS FOR THE DISPOSAL OF INDUSTRIAL WASTES SHALL BE MADE TO SEWERS SHOWN ON THESE DRAWINGS WITHOUT WRITTEN PERMISSION FROM THE CHIEF ENGINEER AND GENERAL MANAGER OF THE COUNTY SANITATION DISTRICTS.



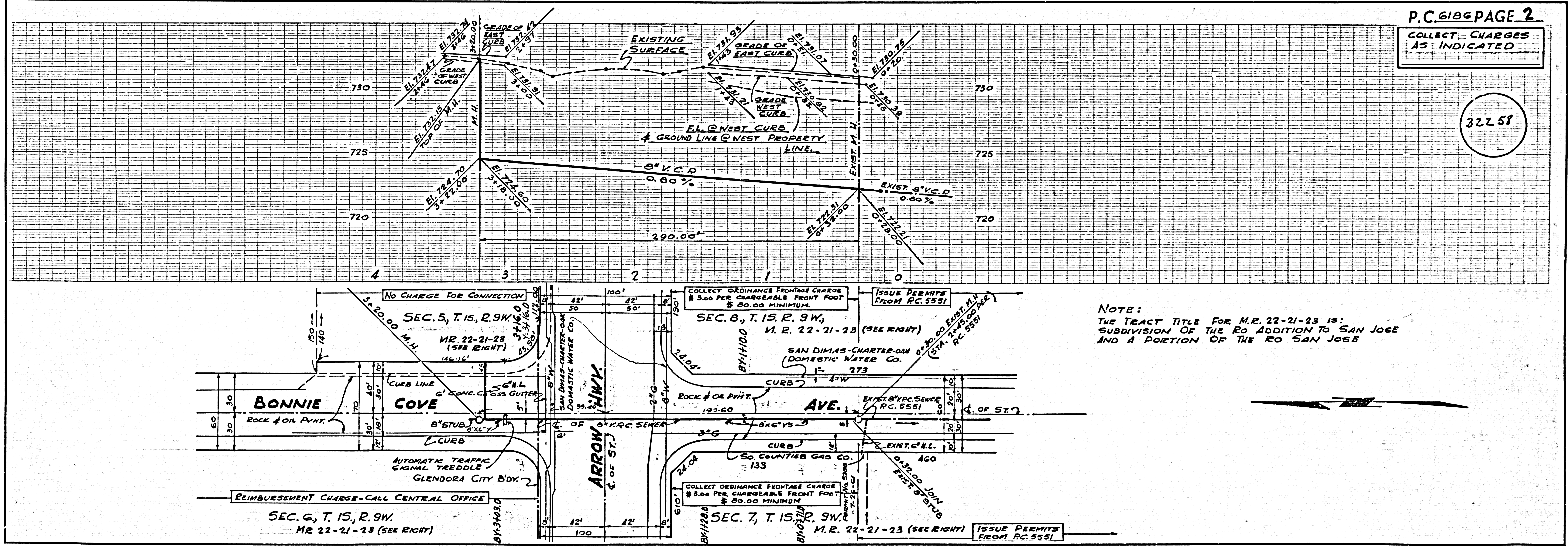
INDEX MAP
SCALE: 1" = 600'
P.C. 6186

NOTE: NUMBER IN CIRCLE INDICATES PAGE NUMBER.

COLLECT CHARGES AS INDICATED

APPROVED, JOHN A. LAMBIE, COUNTY ENGINEER
APPROVED, J. D. PARKER, CHIEF ENGINEER
BY: [Signature] ASST. SANITATION ENGINEER
BY: [Signature] OFFICE ENGINEER
CHECKED BY: [Signature] 5-14-62
OFFICE OF COUNTY ENGINEER, REG. C. E. NO. 2406

APPROVED: [Signature] GLENDORA CITY ENGINEER
SUBMITTED BY: W.C. [Signature] 5-11-62
SAN DIMAS REGIONAL ENGINEER



P.C. 6186 PAGE 2
COLLECT CHARGES AS INDICATED

32257