

Bench Mark;
 SY 4380 2" I.P. with concrete plug & spk.
 12" deep ± 77' W/O Hawthorne Boulevard
 approx. center of Long tangent Sta. 29+00 ± 1 mile
 N. Crest Road Elev. 1030.973 Palos Verdes 1955

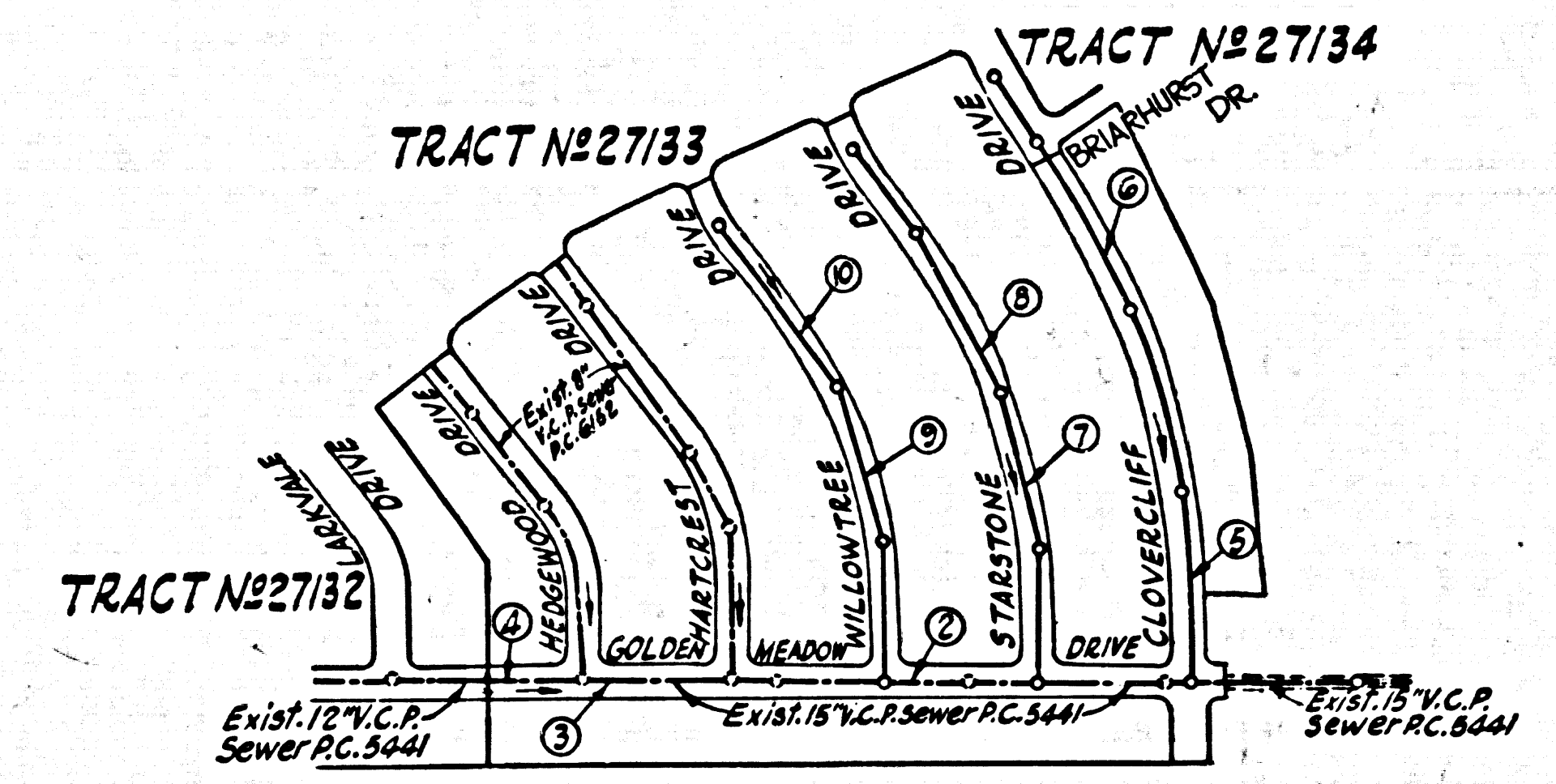
DOUBLE SCALE
 LOMITA BLDG. DIST. NO. 12

PROFILE ALIGNMENT AND GRADE OF P.C. 6188
 SANITARY SEWERS PAGE 1
 TO BE CONSTRUCTED IN J.N. 0358.01

TRACT No 27/35
 PRIVATE CONTRACT NO. 6188
 W.S. 27
 5 SHEETS; 10 PAGES
 SCALE: VERT. 1" = 5' APRIL, 1962
 PREPARED IN THE OFFICES OF
 ENGINEERING SERVICE CORPORATION

32197

NOTE
 1. Lot Nos 19 through 33 inclusive are served by Sewer in Hedgewood Drive P.C. 6152.
 2. Lot Nos 36 through 57 inclusive are served by Sewer in Hortrest Drive P.C. 6152.



INDEX MAP
 TRACT No 27/35
 SCALE: 1/4" = 100'
 P.C. 6188

PRIVATE ENGINEER'S
 NOTICE TO CONTRACTOR

THE EXISTENCE AND LOCATION OF ANY UNDERGROUND UTILITY PIPES OR STRUCTURES SHOWN ON THESE PLANS ARE OBTAINED BY A SEARCH OF THE AVAILABLE RECORDS TO THE BEST OF OUR KNOWLEDGE. THERE ARE NO EXISTING UTILITIES EXCEPT AS SHOWN ON THIS MAP. THE CONTRACTOR IS REQUIRED TO TAKE PRECAUTIONARY MEASURES TO PROTECT THE UTILITY LINES SHOWN AND ANY OTHER LINES NOT OF RECORD OR NOT SHOWN ON THIS DRAWING.

NOTE: EXISTING MANHOLE TOPS IN TRACT No 27/35 SHALL BE ADJUSTED PER S-A-174 CASE I OR CASE II.

- NOTES:
- PROVIDE STAKES ON THE PROPERTY LINE OR PROPERTY LINES PRODUCED AT RIGHT ANGLES TO THE SEWER LINE AT THE CENTER LINE OF EACH MANHOLE.
 - NO REPRESENTATIVE OF THE COUNTY ENGINEER WILL SURVEY OR LAYOUT ANY PORTION OF THE WORK.
 - THE OWNER OR HIS AUTHORIZED REPRESENTATIVE SHALL FURNISH THE COUNTY ENGINEER WITH GRADE SHEETS AND STATION FOR ALL HOUSE LATERALS AND Y BRANCHES AND SHALL PROVIDE STAKES FOR THEM AT THEIR PROPER LOCATIONS WITH STATIONING PLAINLY MARKED. ANY CHANGE IN LOCATION SHALL BE REQUESTED IN WRITING BY THE OWNER OR HIS REPRESENTATIVE.
 - NO REVISIONS SHALL BE MADE IN THESE PLANS WITHOUT THE APPROVAL OF THE COUNTY ENGINEER.
 - USE STANDARD MANHOLE FRAMES AND COVERS, S.A. 117, EXCEPT AS NOTED.
 - USE EXTRA STRENGTH PIPE, ALL PIPE IS STANDARD DEPTH, EXCEPT AS NOTED.
 - USE "WEDGE LOCK" OR "SPEED SEAL" FOR ALL VITRIFIED CLAY PIPE JOINTS PER SPCS., MC. 34.
 - RESURFACE ALL TRENCH WITHIN PAVED AREA TO MEET L.A. COUNTY ROAD DEPT. OR CALIF. STATE HIGHWAY DEPT. REQUIREMENTS IN ACCORDANCE WITH PERMITS.
 - ENCASE FOUR FEET OF SEWER AT POINTS OF INTERFERENCE WITH POLES, S.A. 111.
 - HOUSE LATERALS TO BE CONSTRUCTED WITH R-YETS AT PROPERTY LINE. 6" FEET BELOW CURB GRADE EXCEPT AS NOTED.
 - ALL STRUCTURES SHALL BE BRICK SEWER STRUCTURES, S.A. 104, PRECAST REINFORCED CONCRETE MANHOLES PER S-A-135 OR S-A-174 MAY BE USED AS AN ALTERNATE IN LOCATIONS APPROVED BY THE COUNTY ENGINEER.
 - FOR ALLOWABLE LEAKAGE TEST USE FORMULA NO. 1 PER SPCS., SEC. 64.
 - MANHOLE TOPS IN UNIMPROVED PORTS-OF-WAY TO BE 6" ABOVE FINISHED GRADE.
 - THE PRIVATE ENGINEER IS TO FURNISH THE HOUSE LATERAL DEPTH AT THE PROPERTY LINE BELOW THE TOP OF CURB ELEVATION FOR EACH HOUSE LATERAL ON THE GRADE SHEET.
 - THE CONTRACTOR SHALL NOTIFY THE CONSTRUCTION AND STORM DRAIN DIVISION BY TELEPHONE, MADISON 9-4747, EXT. 81551 AT LEAST 24 HOURS BEFORE STARTING ANY WORK UNDER THIS CONTRACT.
 - STANDARD SPECIFICATIONS DATED OCT. 25, 1961 APPLY IN THE CONSTRUCTION OF THIS PROJECT.
 - NO CONSTRUCTION WILL BE PERMITTED IN FILLED AREAS UNLESS ACCEPTABLE CERTIFICATION IS SUBMITTED TO THE CONSTRUCTION DIVISION OF THE COUNTY ENGINEER'S DEPARTMENT THAT RELATIVE COMPACTION IS GREATER THAN 90% (1) IF COMPACTION IS LESS THAN 90%, THE SEWER MUST BE CADDLED AS SHOWN ON THE PLANS PER S-A-168.
 - (2) IF COMPACTION IS 90% OR GREATER, CADDLING IS NOT REQUIRED. HOWEVER, "WEDGE LOCK" OR "SPEED SEAL" MUST BE SUBSTITUTED FOR CEMENT MORTAR FOR ALL JOINTS IN FILLED AREAS. IF COMPACTION IS 90% OR GREATER SPECIAL MANHOLE BASES ARE NOT REQUIRED.

NO CONNECTIONS FOR THE DISPOSAL OF INDUSTRIAL WASTES SHALL BE MADE TO SEWERS SHOWN ON THESE DRAWINGS WITHOUT WRITTEN PERMISSION FROM THE CHIEF ENGINEER AND GENERAL MANAGER OF THE COUNTY SANITATION DISTRICTS.

NO CHARGE FOR CONNECTIONS
Alford Sew

ENGINEERING SERVICE CORPORATION					
1127 W. WASHINGTON BLVD.					
LOS ANGELES 15, CALIF. RI. 9-7281					
REVISIONS			TRACED BY: C.F.		
			DES'G'D BY: L.W. BEKK.		
			CK'D BY: C.M.R.		
			SUBMITTED:		
SUB STRUCTURES OK'D					
W. O. NO.	DWG. NO.	DATE	SCALE	L. B.	P. B.
6601-226		April 1962	As Noted		Loose Sheets

NOTE:
 GRADES TO WHICH THIS IMPROVEMENT IS TO BE CONSTRUCTED ARE SHOWN ON PLANS AND PROFILES. GRADE POINTS FOR TOP OF CURB, CENTER LINE OF STREETS, OR CENTER LINE OF ALLEYS ARE SHOWN BY CIRCLES ON PROFILES AT ALL POINTS BETWEEN DESIGNATED POINTS THE GRADE SHALL BE ESTABLISHED SO AS TO CONFORM TO A STRAIGHT LINE DRAWN BETWEEN SAID DESIGNATED POINTS.
 ELEVATIONS ARE IN FEET ABOVE U.S.C.S. DATUM OR MEAN SEA LEVEL.
 THIS DRAWING AND THE DATA HEREON ARE HEREBY MADE A PART OF THE SPECIFICATIONS.
 WORK SHALL BE CONSTRUCTED ACCORDING TO SPECIFICATIONS ON FILE IN THE OFFICE OF THE COUNTY ENGINEER AND SHALL BE PROSECUTED ONLY IN THE PRESENCE OF THE COUNTY ENGINEER.
 BEFORE WORK CAN BE STARTED, THE CONTRACTOR MUST OBTAIN A PERMIT TO EXCAVATE IN COUNTY STREETS FROM THE L.A. COUNTY ROAD DEPT., DISTRICT OFFICE #3 AND PAY A FEE TO THE COUNTY ENGINEER, ROOM 310 COUNTY ENGINEER'S BLDG. 102 N. 1ST STREET, SUFFICIENT TO COVER THE COST OF CONSTRUCTION INSPECTION AND RECORD PLANS.
 APPROVAL OF THIS PLAN BY THE COUNTY OF LOS ANGELES DOES NOT CONSTITUTE A REPRESENTATION AS TO THE ACCURACY OF THE LOCATION OF OR THE EXISTENCE OR NON-EXISTENCE OF ANY UNDERGROUND UTILITY PIPE, OR STRUCTURE WITHIN THE LIMITS OF THIS PROJECT. THIS NOTE APPLIES TO ALL PAGES.
 IF WORK IS TO BE DONE IN A STATE HIGHWAY, A PERMIT MUST BE OBTAINED FROM THE STATE OF CALIFORNIA, DIVISION OF HIGHWAYS, 120 SOUTH SPRING STREET.

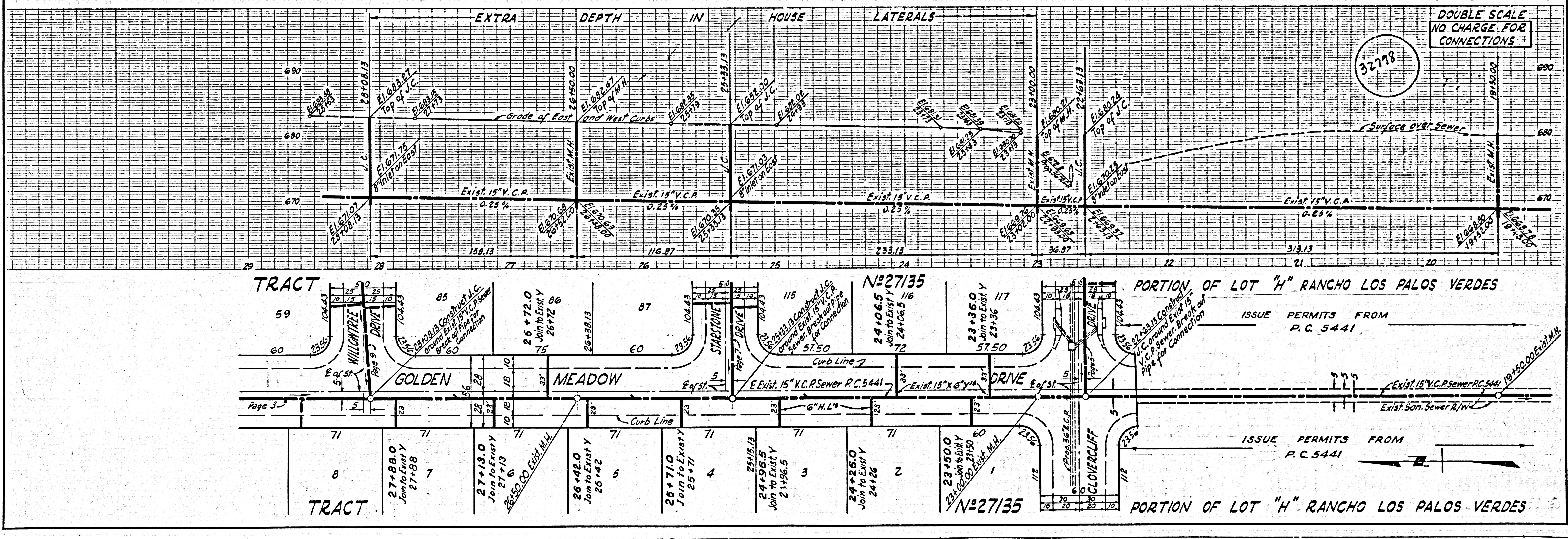
COUNTY OF LOS ANGELES, CALIFORNIA
 APPROVED, JOHN A. LAMBIE, COUNTY ENGINEER
 APPROVED, J.A. MAKINNEY, CHIEF ENGINEER
 BY: *John A. Lambie* ASST. SANITATION ENGINEER
 BY: *J.A. Makinney* OFFICE ENGINEER
 CHECKED BY: *John A. Lambie* 5-23-62
 OFFICE OF COUNTY ENGINEER, BLDG. C. E. NO. 3408

SUBMITTED BY: *Jack C. Lawlor* 5-23-62
 Palos Verdes-Centinala Valley Regional Engineer

P.C. 6188 PAGE 2

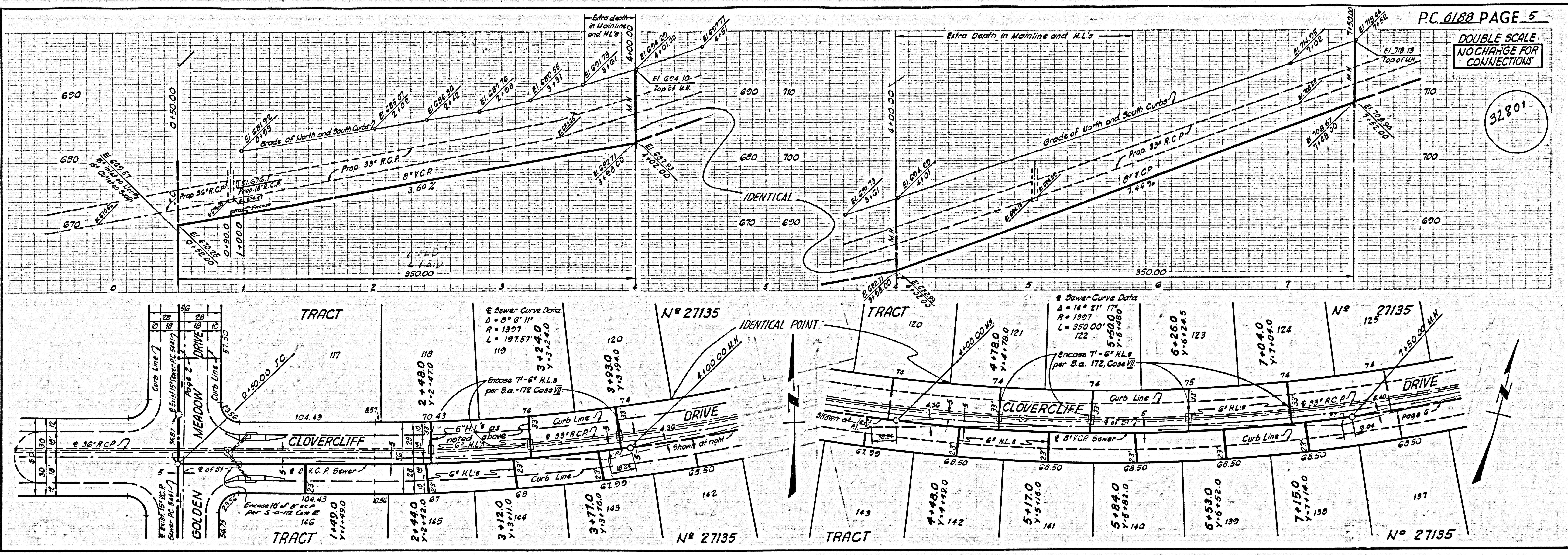
DOUBLE SCALE
 NO CHARGE FOR CONNECTIONS

32198



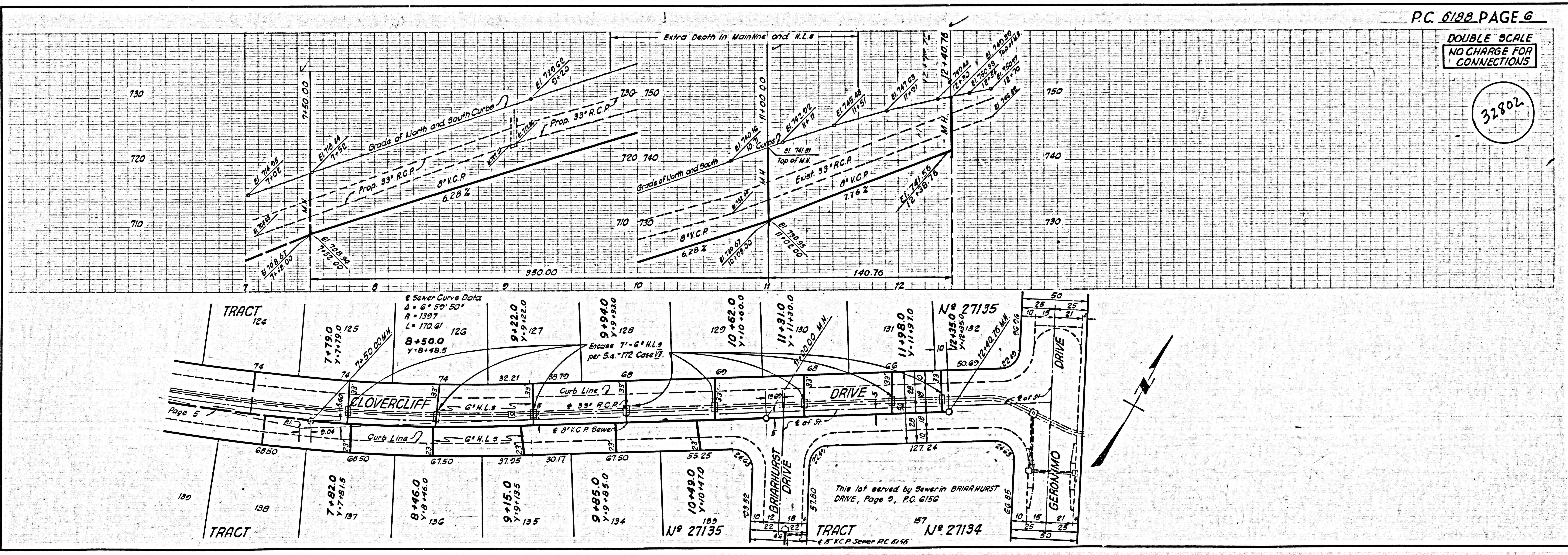
DOUBLE SCALE
NO CHARGE FOR
CONNECTIONS

32801



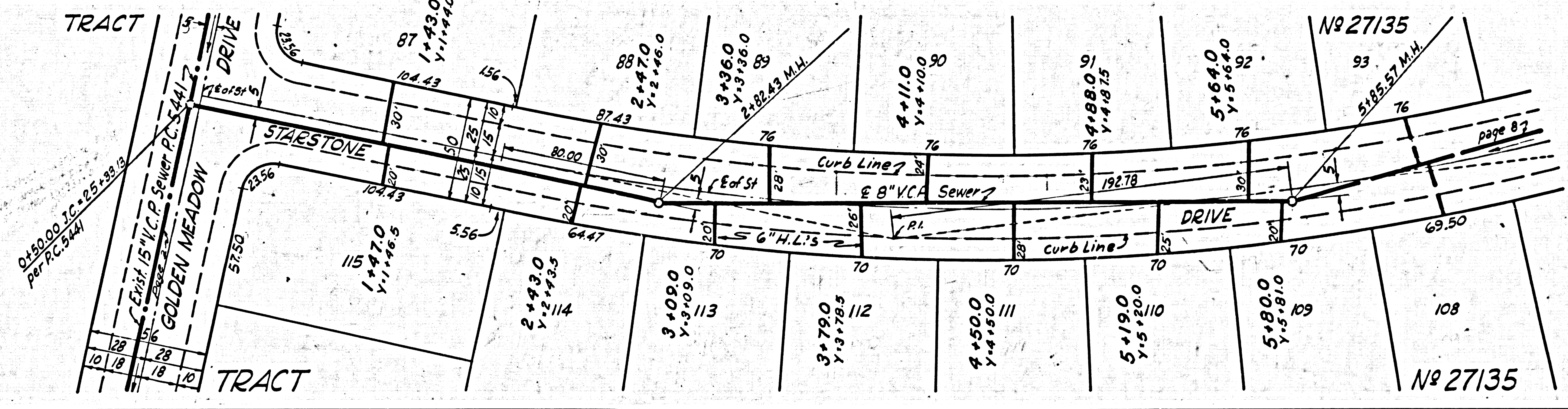
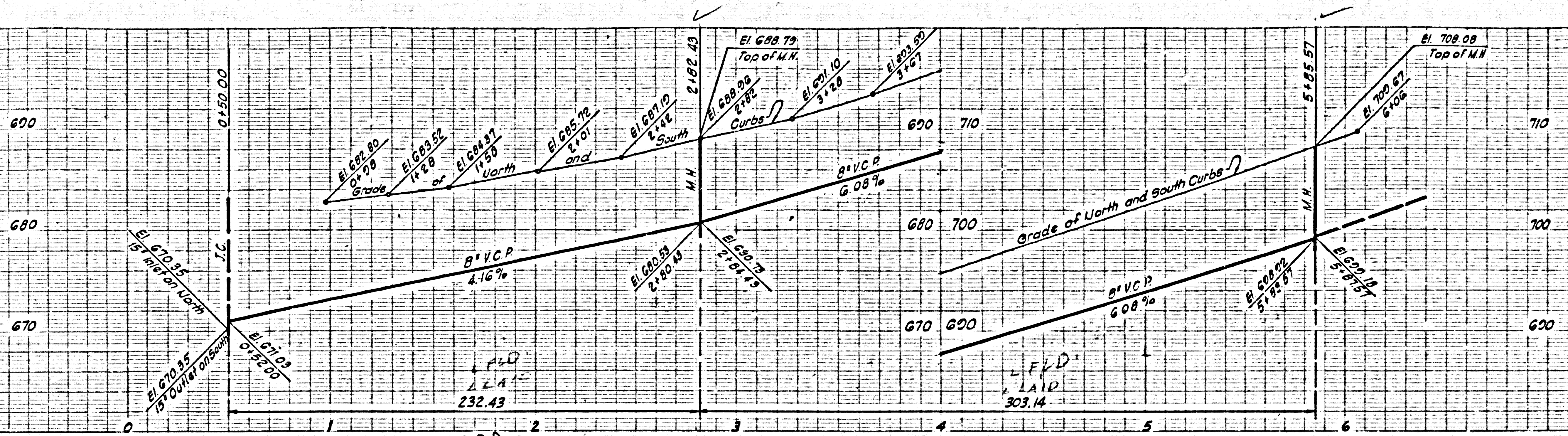
DOUBLE SCALE
NO CHARGE FOR
CONNECTIONS

32802



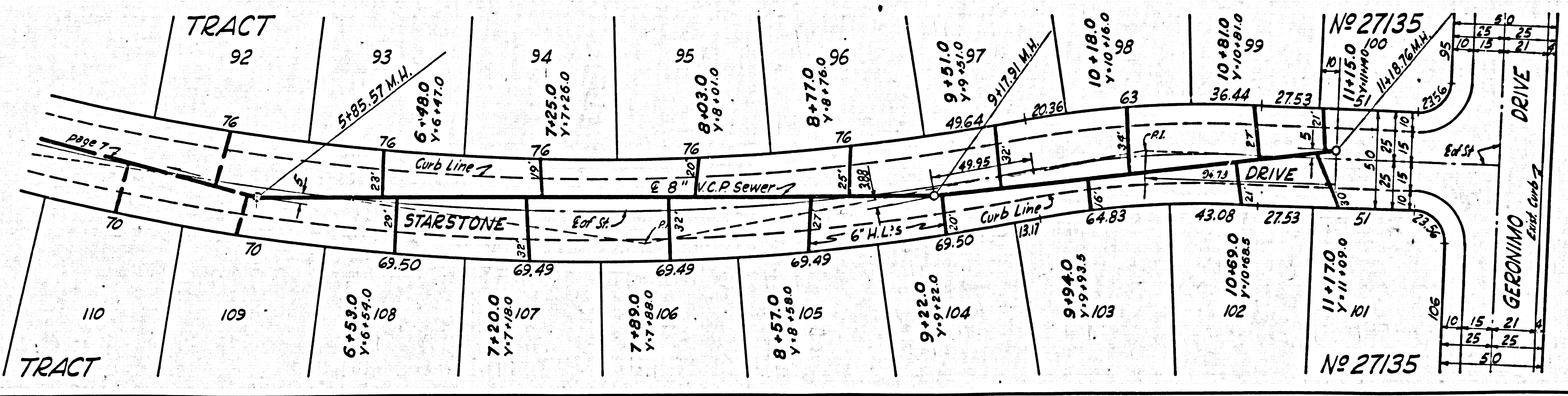
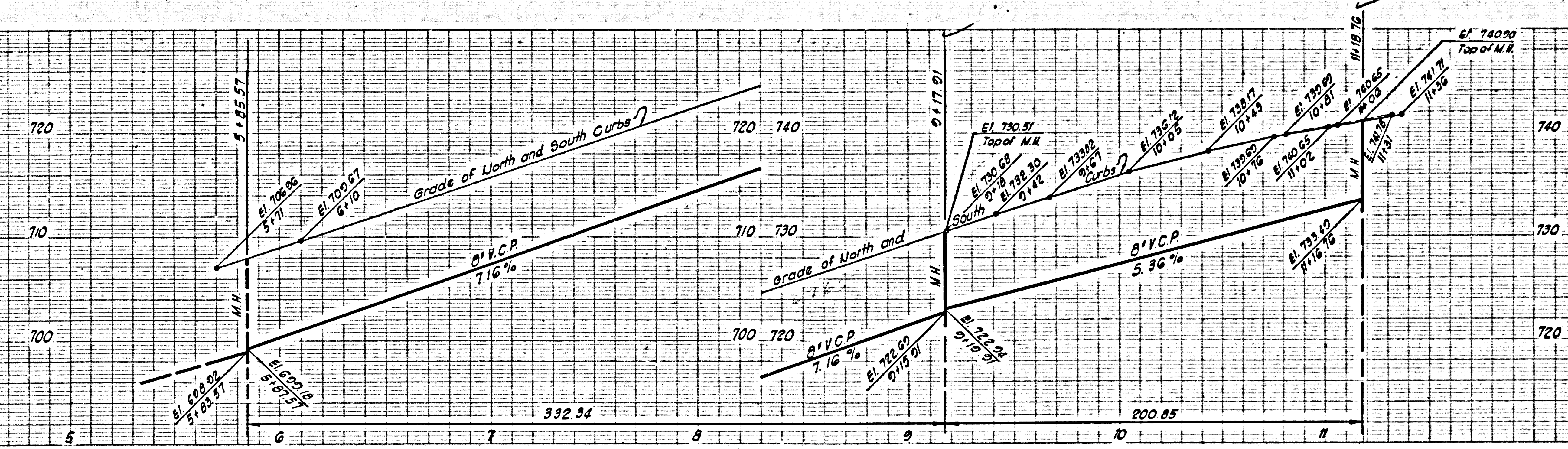
DOUBLE SCALE
NO CHARGE FOR
CONNECTIONS

32803



DOUBLE SCALE
NO CHARGE FOR
CONNECTIONS

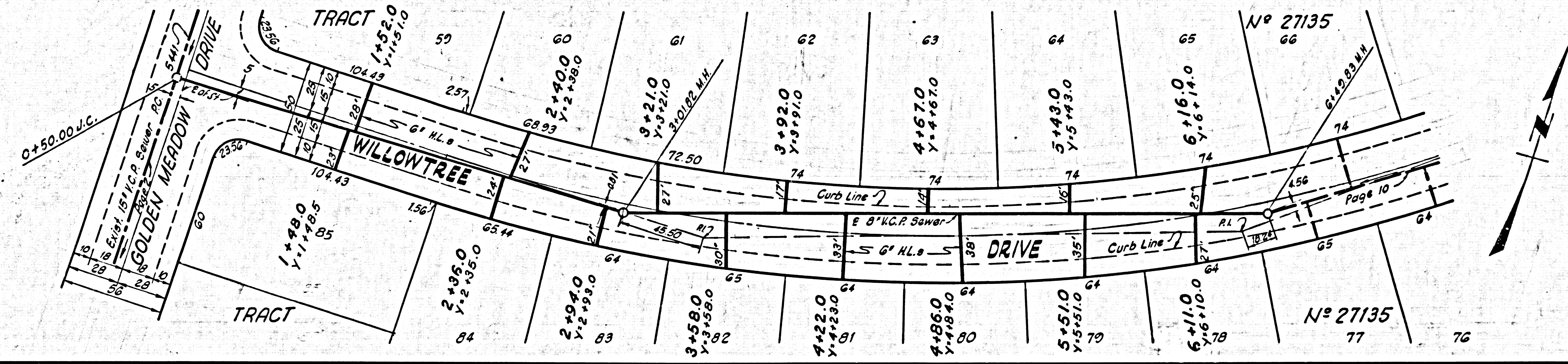
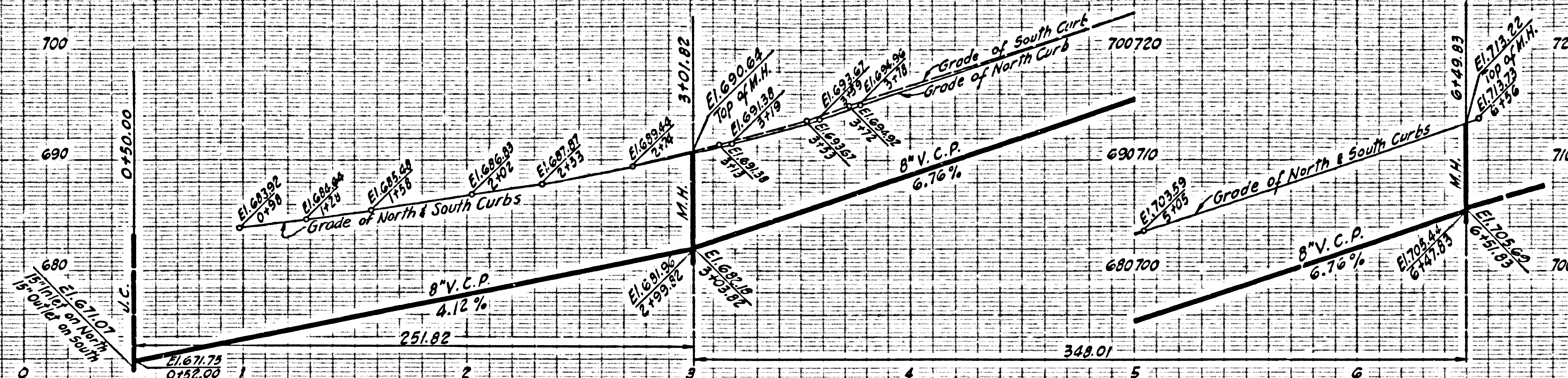
32804



DOUBLE SCALE

NO CHARGE FOR CONNECTION

32805



DOUBLE SCALE

NO CHARGE FOR CONNECTION

32806

