

15621 NO. 5212 P.C. 6190

PAGES 1 & 2 OF 2 PAGES

L.A. CO. D.M. 375458 ELEV. 104.891  
S.M. - L.A. CO. TRAVERSE MON. ON PACIFIC  
COAST HWY. 3 1/2 MILES WEST OF BRIDGE  
AT TRAVAS CANYON HWY. STA. 558+95  
1/4 S.O. OF LEAD AND TACK IN S.O. CURB OF  
DIVIDING STRIP 131' S.W. C. 375457  
1/2 N.E. OF 2' I.P. MKE. MALIBU 1960

ISSUE NO H.L. PERMITS  
UNTIL R/W CLEARS

ALL STATE AND LOCAL TRENCH SAFETY ORDERS WILL BE RIGIDLY ENFORCED.

NO CHARGE FOR  
CONNECTIONS  
Charles D. Nigam

# DOUBLE SCALE MALIBU BLDG. DIST. NO. 9.2

PROFILE ALIGNMENT AND GRADE OF P.C. 6190

SANITARY SEWERS PAGE 1

TO BE CONSTRUCTED IN

TRACT NO. 25166

PRIVATE CONTRACT NO. 6190

W.S. 35

7 SHEETS; 9 PAGES

35083

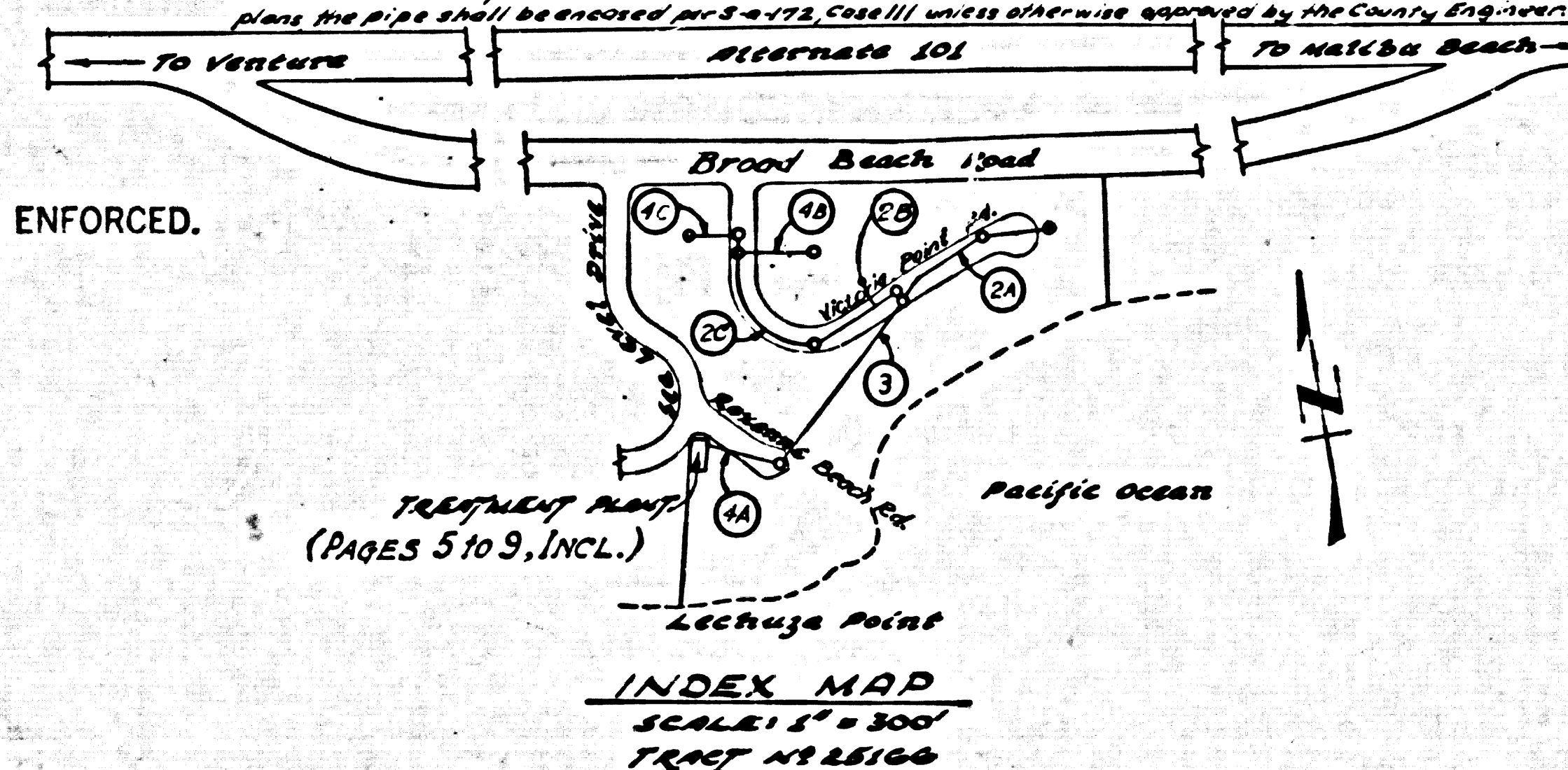
SCALE: VERT. 1"=6'  
HORIZ. 1"=40'

MAY, 1962  
PREPARED IN THE OFFICES OF  
POMEROY & ASSOCIATES  
660 SO. FAIROAKS AVE. PASADENA, CALIF.

By: Richard Lowrey  
REG. C. E. NO. 8170

FOR LEGEND SEE PLAN NO. S-A-64

- NOTES:
1. PROVIDE STAKES ON THE PROPERTY LINE OR PROPERTY LINES PRODUCED AT RIGHT ANGLES TO THE SEWER LINE AT THE CENTER LINE OF EACH MANHOLE.
  2. NO REPRESENTATIVE OF THE COUNTY ENGINEER WILL SURVEY OR LAY OUT ANY PORTION OF THE WORK.
  3. THE PRIVATE CONTRACTOR SHALL FURNISH THE COUNTY ENGINEER WITH GRADE SHEETS AND STATIONING FOR ALL HOUSE LATERALS AND Y BRANCHES AND SHALL PROVIDE STAKES FOR THEM AT THEIR PROPER LOCATIONS WITH STATIONING PLAINLY MARKED. ANY CHANGE IN LOCATION SHALL BE REQUESTED IN WRITING BY THE OWNER OR HIS REPRESENTATIVE.
  4. THE PRIVATE ENGINEER SHALL FURNISH THE HOUSE LATERAL DEPTH AT THE PROPERTY LINE BELOW THE TOP OF CURB ELEVATION FOR EACH HOUSE LATERAL ON THE GRADE SHEET.
  5. NO REVISIONS SHALL BE MADE IN THESE PLANS WITHOUT THE APPROVAL OF THE COUNTY ENGINEER.
  6. USE STANDARD MANHOLE FRAMES AND COVERS, S-117, EXCEPT AS NOTED.
  7. USE EXTRA STRENGTH PIPE ALL PIPE STANDARD DEPTH EXCEPT AS NOTED.
  8. USE "WEDGE-LOCK" OR "SPEED-SEAL" FOR ALL V.C.P. JOINTS PER SPECS, SECS. M & N.
  9. RESURFACE ALL TRENCH WITHIN PAVED AREA TO MEET L.A. COUNTY ROAD DEPT. OR CALIF. STATE HIGHWAY REQUIREMENTS IN ACCORDANCE WITH PERMITS.
  10. ENCASE FOUR FEET OF SEWER AT POINTS OF INTERFERENCE WITH POLES, CASE III, S-172.
  11. HOUSE LATERALS TO BE CONSTRUCTED WITH INVERTS AT PROPERTY LINE 6" FEET BELOW CURB GRADE EXCEPT AS NOTED.
  12. ALL STRUCTURES SHALL BE BRICK SEWER STRUCTURES, S-104, EXCEPT AS NOTED.
  13. FOR ALLOWABLE LEAKAGE TEST USE FORMULA NO. 1, SPECS, SEC. 54.
  14. MANHOLE TOPS IN UNIMPROVED RIGHTS-OF-WAY TO BE SIX INCHES ABOVE FINISHED GRADE.
  15. THE CONTRACTOR SHALL NOTIFY THE CONSTRUCTION DIVISION BY TELEPHONE, MADISON 5-4747, BY TELETYPE AT LEAST TWENTY-FOUR HOURS BEFORE STARTING ANY WORK UNDER THIS CONTRACT.
  16. STANDARD SPECIFICATION DATED MAY 25, 1962 APPLY IN CONSTRUCTION OF THIS PROJECT.
  17. LENGTH OF EACH PIPE NOT TO EXCEED 34' ON SEWER CURVE.
  18. IF DURING THE COURSE OF CONSTRUCTION, IT IS DETERMINED THAT THERE IS LESS THAN 4 FEET OF COVER OVER THE TOP OF A MAIN LINE OR HOUSE LATERAL V.C.P. SEWER WHICH IS NOT INDICATED ON THE PLANS, THE PIPE SHALL BE ENCASED PER S-172, CASE III UNLESS OTHERWISE SPECIFIED BY THE COUNTY ENGINEER.

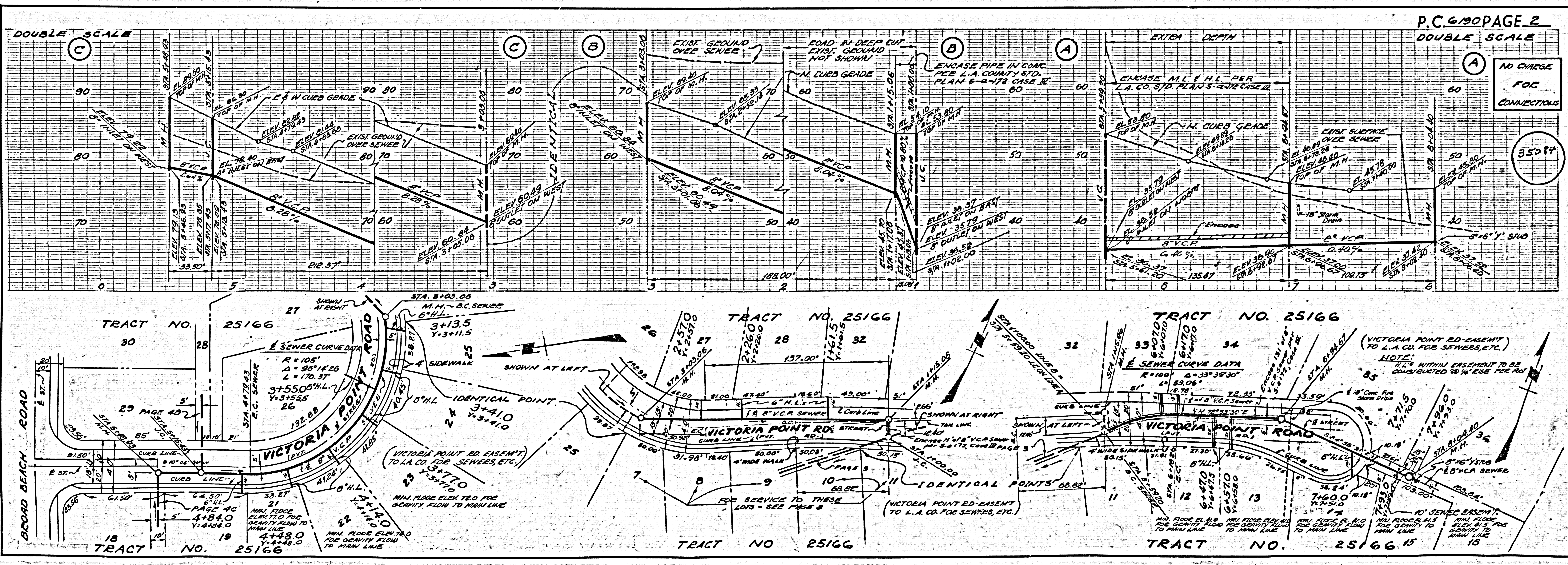


NOTE:  
GRADES TO WHICH THIS IMPROVEMENT IS TO BE CONSTRUCTED ARE SHOWN ON PLANS AND PROFILES. GRADE POINTS FOR TOP OF CURBS, CENTER LINE OF STREETS, OR CENTER LINE OF ALLEYS ARE SHOWN BY CIRCLES ON PROFILES. AT ALL POINTS BETWEEN DESIGNATED POINTS THE GRADE SHALL BE ESTABLISHED SO AS TO CONFORM TO A STRAIGHT LINE DRAWN BETWEEN SAID DESIGNATED POINTS.  
ELEVATIONS ARE IN FEET ABOVE U.S.C. & G.S. SEA LEVEL DATUM OF 1929.  
THIS DRAWING AND THE DATA HEREON ARE HEREBY MADE A PART OF THE SPECIFICATIONS.  
WORK SHALL BE CONSTRUCTED ACCORDING TO SPECIFICATIONS ON FILE IN THE OFFICE OF THE COUNTY ENGINEER AND SHALL BE PROSECUTED ONLY IN THE PRESENCE OF THE COUNTY ENGINEER.  
BEFORE WORK CAN BE STARTED, THE CONTRACTOR MUST OBTAIN A PERMIT TO EXCAVATE IN COUNTY STREETS FROM THE L.A. COUNTY ROAD DEPT., DISTRICT OFFICE NO. 5, AND PAY A FEE TO THE COUNTY ENGINEER, ROOM 310-108, W. SECOND STREET, SUFFICIENT TO COVER THE COST OF CONSTRUCTION INSPECTION AND RECORD PLANS.  
APPROVAL OF THIS PLAN BY THE COUNTY OF LOS ANGELES DOES NOT CONSTITUTE A REPRESENTATION AS TO THE ACCURACY OF THE LOCATION OF OR THE EXISTENCE OR NON-EXISTENCE OF ANY UNDERGROUND UTILITY PIPE, OR STRUCTURE WITHIN THE LIMITS OF THIS PROJECT. THIS NOTE APPLIES TO ALL PAGES.  
IF WORK IS TO BE DONE IN A STATE HIGHWAY, A PERMIT MUST BE OBTAINED FROM THE STATE OF CALIFORNIA, DIVISION OF HIGHWAYS, 120 SOUTH SPRING STREET.

COUNTY OF LOS ANGELES, CALIFORNIA

APPROVED, JOHN A. LAMBE, COUNTY ENGINEER

By: *Richard Lowrey*  
SANITATION ENGINEER  
CHECKED BY: *Richard Lowrey*  
OFFICE OF COUNTY ENGINEER, REG. C. E. NO. 16278

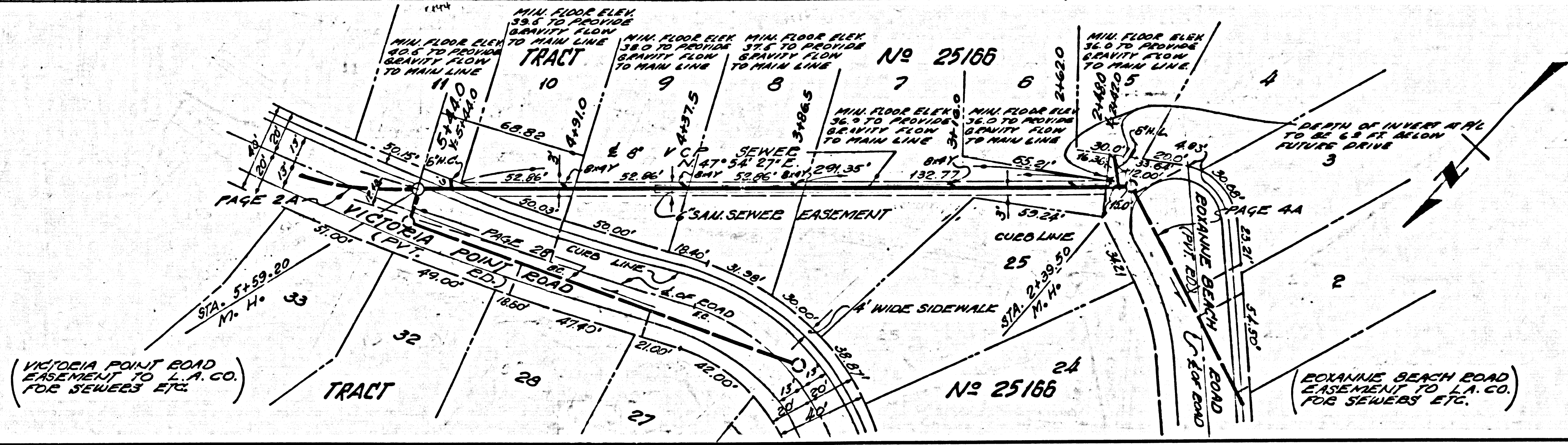
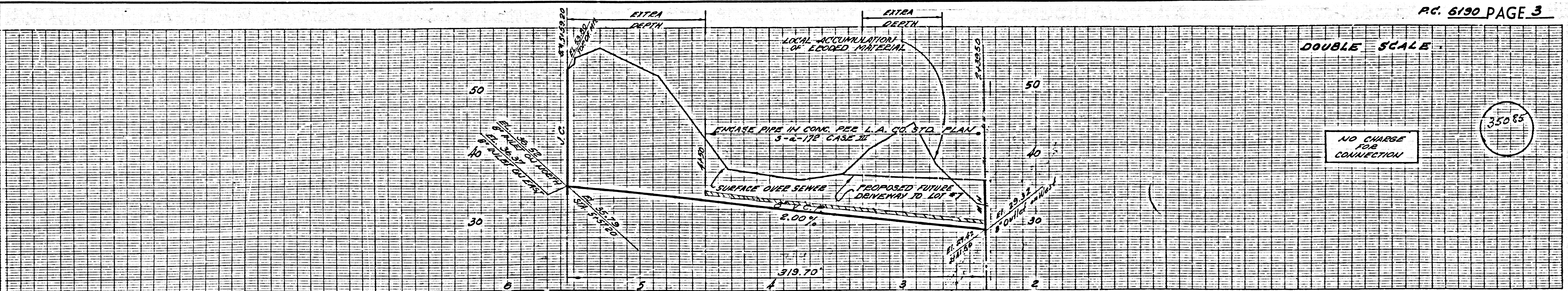




DOUBLE SCALE

35085

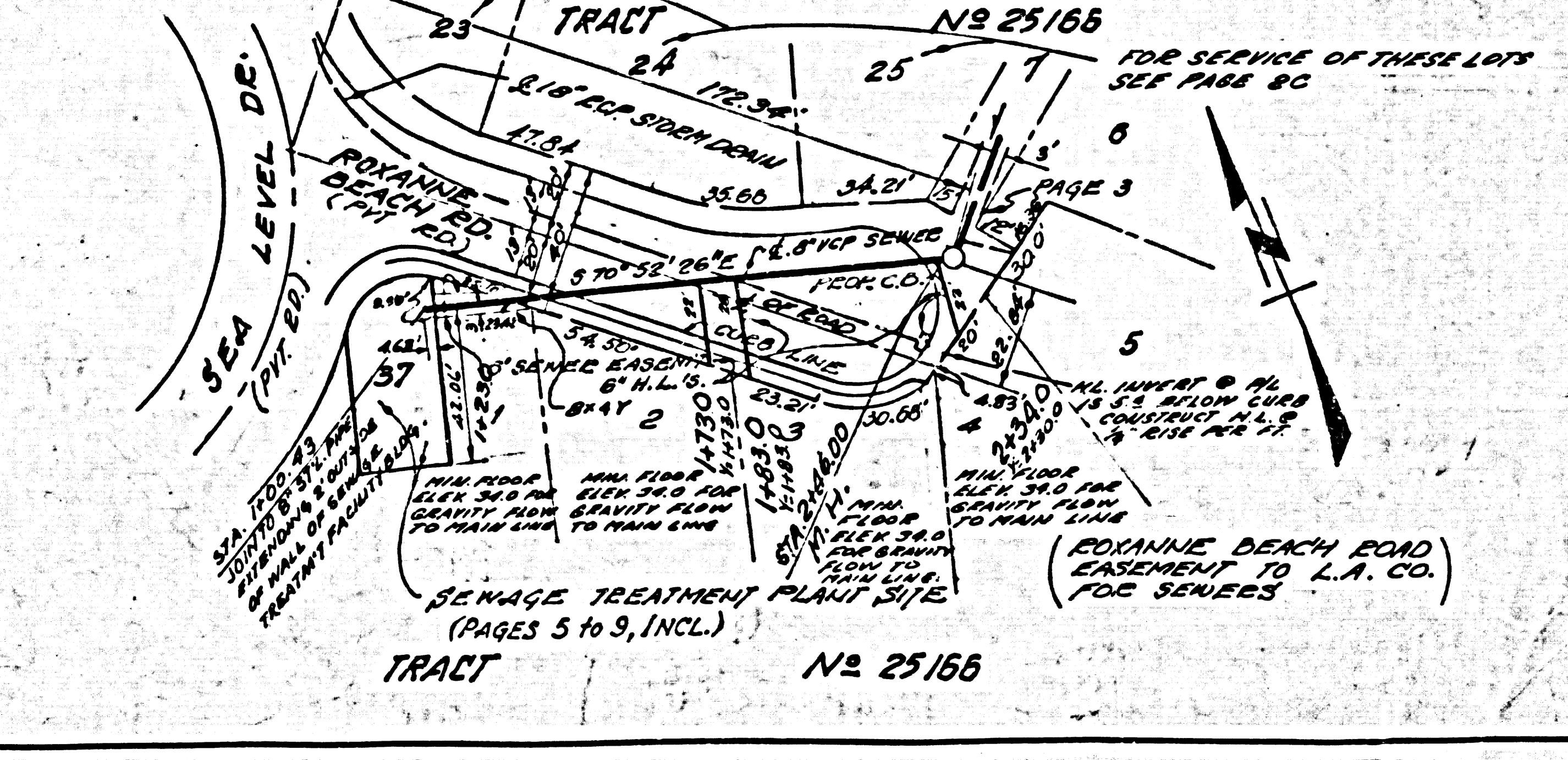
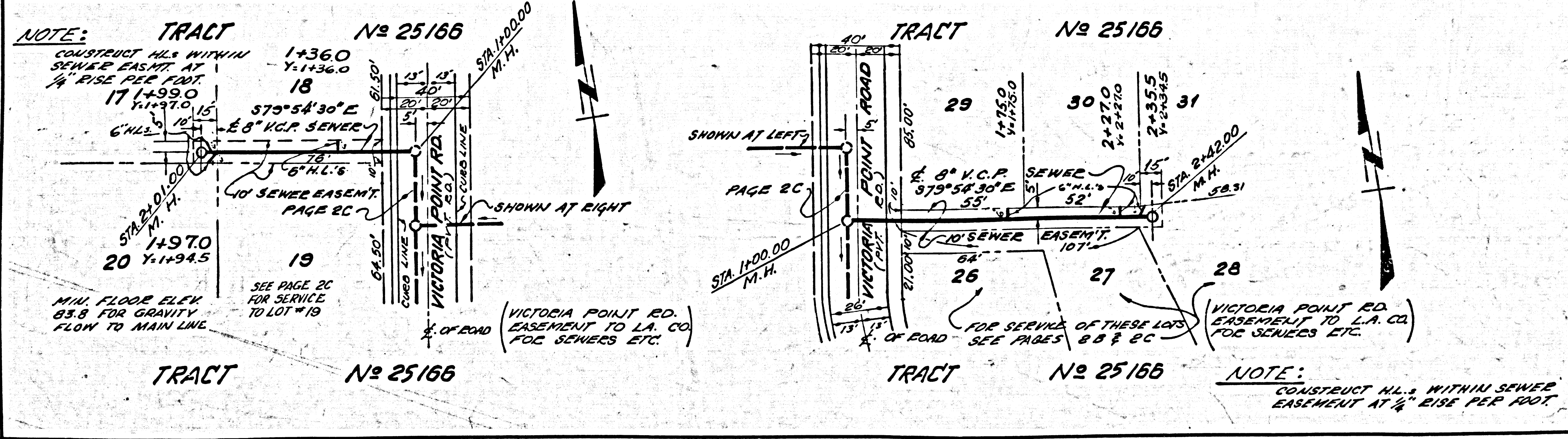
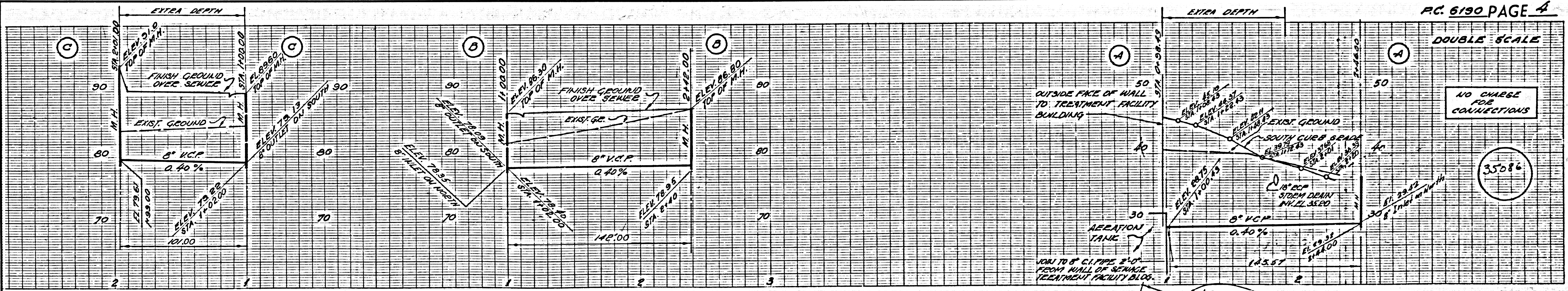
NO CHARGE FOR CONNECTION



DOUBLE SCALE

35086

NO CHARGE FOR CONNECTIONS

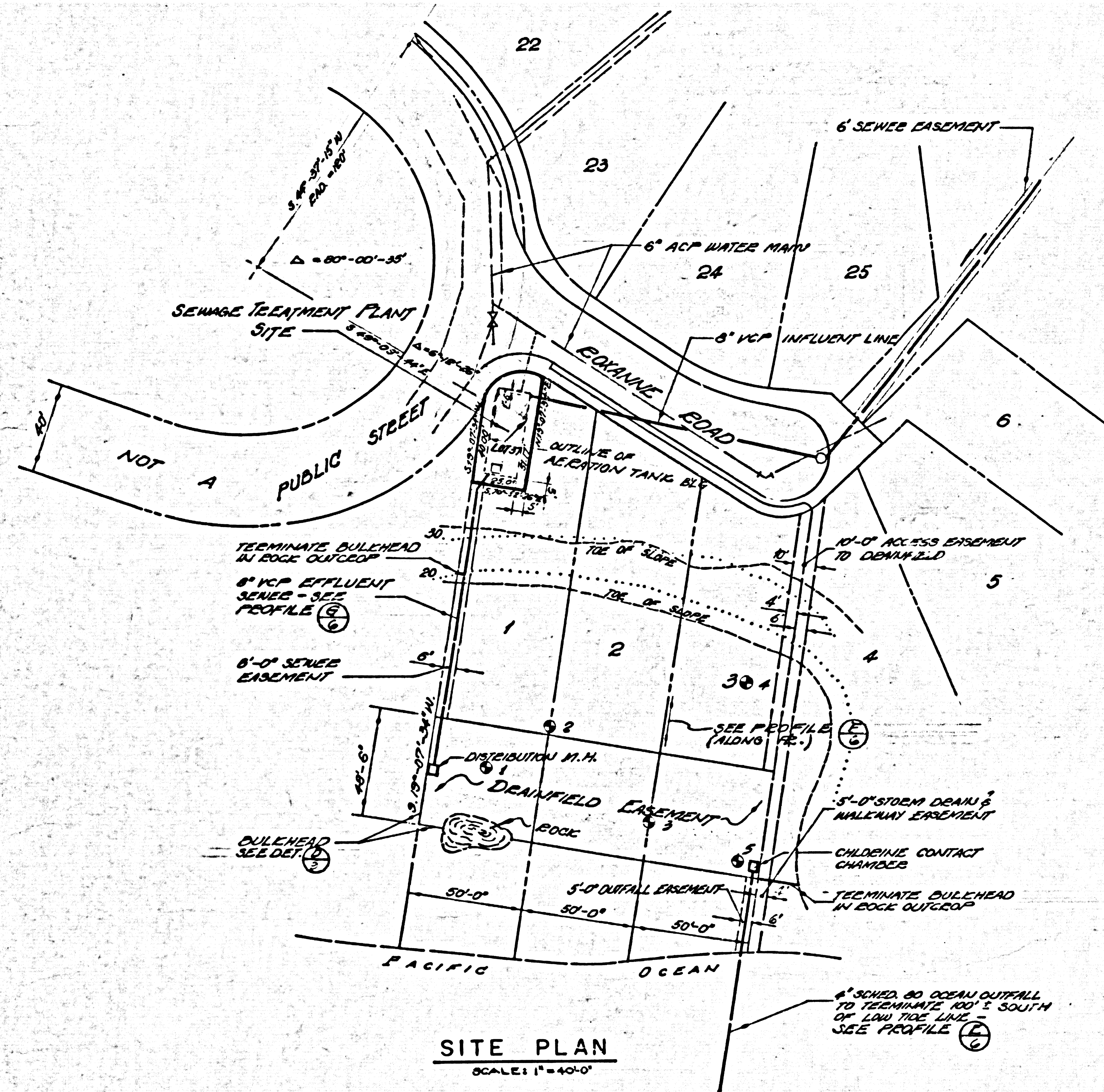




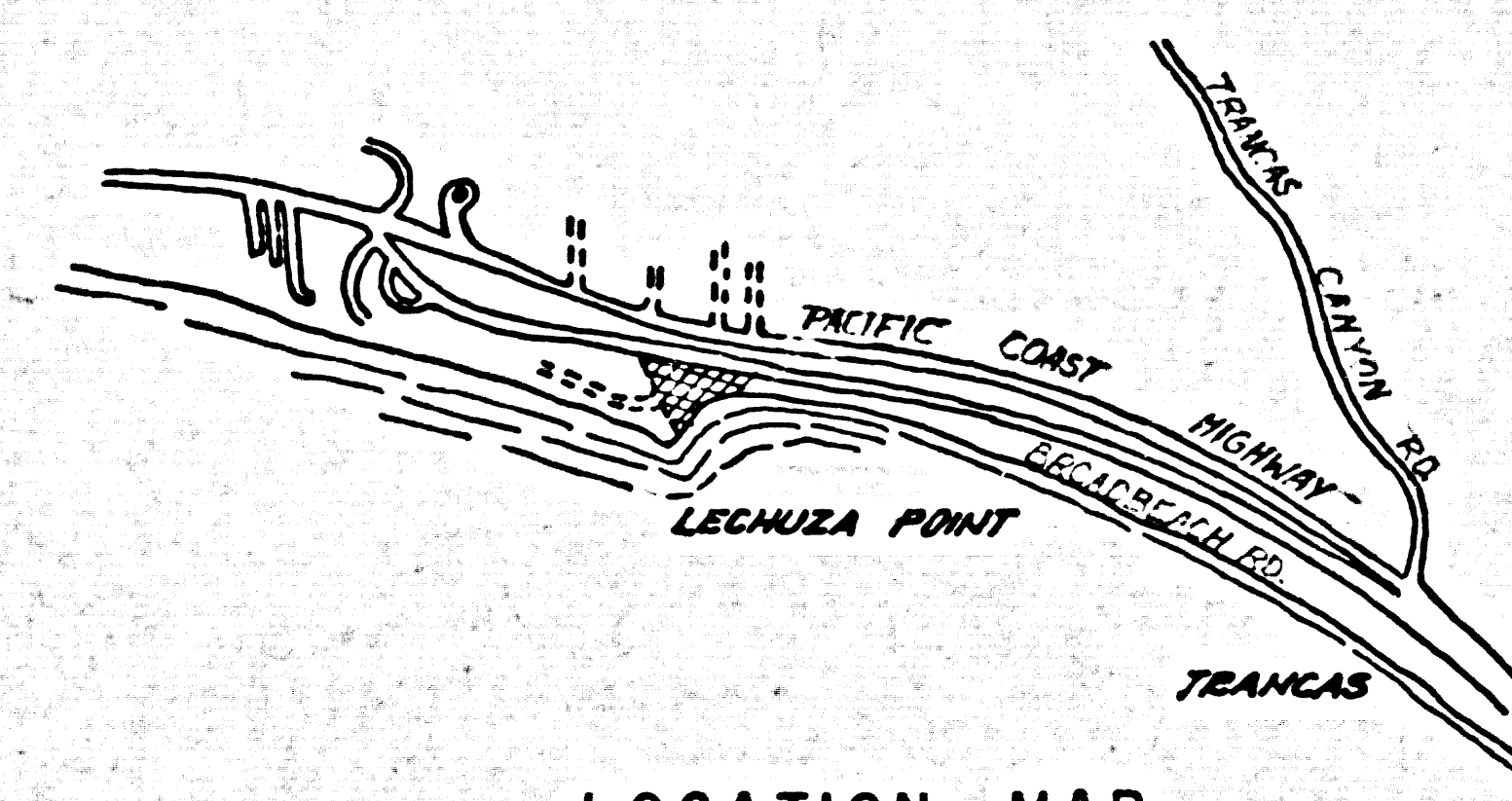
# SEWAGE TREATMENT PLANT

FOR  
LECHUZA POINT SUBDIVISION  
TRACT N° 25166  
MALIBU, CALIFORNIA

P. C. NO. 6190



SITE PLAN  
SCALE: 1" = 40'-0"



LOCATION MAP  
SCALE: 1" = 2000'

PREPARED IN THE OFFICE OF  
**POMEROY AND ASSOCIATES**  
PASADENA, CALIFORNIA

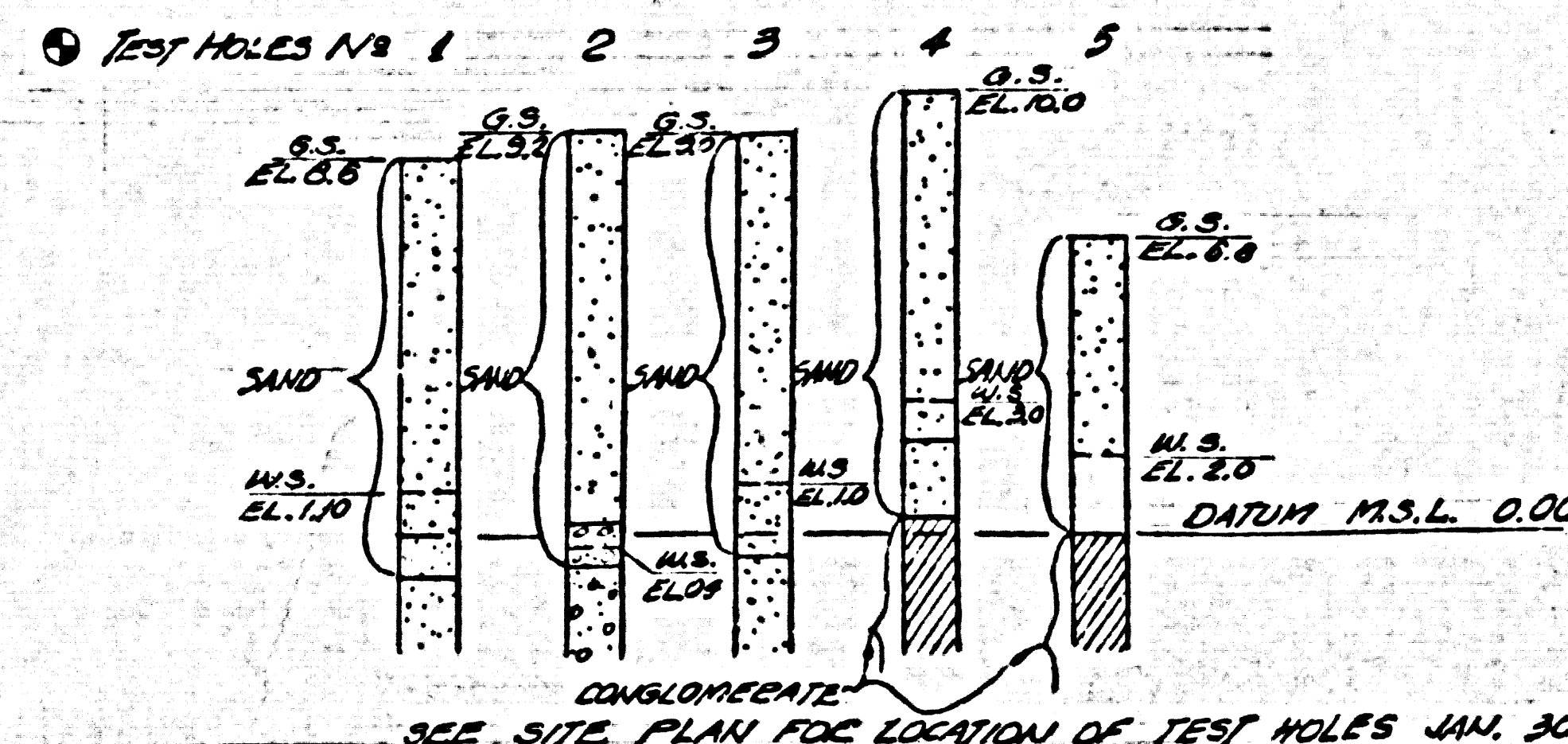
*Richard Pomero*  
RE. NO. 8170 JUNE 1961

## INDEX TO DRAWINGS

SHEET NO.	DESCRIPTION
1	DRAINFIELD PLAN SECTIONS, DETAILS & PROFILES
2	STRUCTURAL DETAILS
3	MECHANICAL DETAILS
4	ELECTRICAL DETAILS

NOTE:  
THE CONTRACTOR SHALL NOTIFY THE L.A. COUNTY ENGR., CONST. DIV., BY TELEPHONE, N.A. 3-4747, EXT. 81551 AT LEAST 24 HRS. BEFORE STARTING CONST. OF SEWAGE TREATMENT PLANT FACILITIES AS DETAILED ON SHEETS 3 THRU 9

**BENCH MARK**  
L.A. CO. B.M. 57545B ELEV. 104.891  
L.A. CO. TRAVERSE MON. ON PACIFIC COAST HWY.  
1.2 MILES WEST BRIDGE AT TRANCAS CANYON  
HWY. STA. 358+95 ± 45' SO. LEAD & FACE IN SO.  
CURB OF DIVIDING STOP 1731 S.W. BY 5457 ± 8" N.E. OF  
2" IRON PIPE HEC. - MALIBU 1960



LOG OF BORING  
SCALE: 1" = 5' VERT.

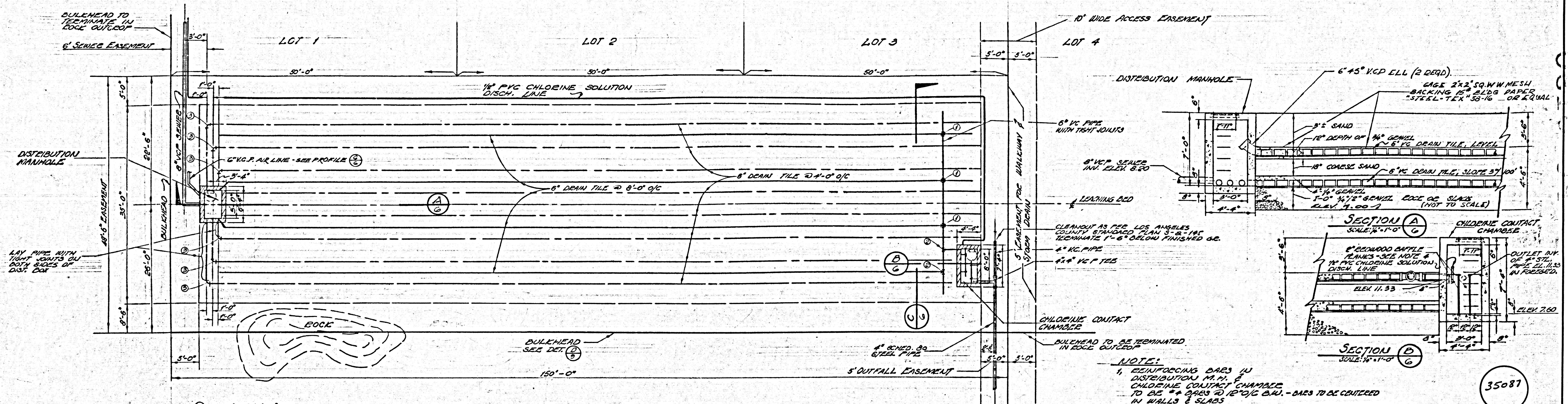
COUNTY OF LOS ANGELES CALIF.  
JOHN A. LAMBIE COUNTY ENGINEER  
APPROVED BY: *[Signature]*  
CHECKED BY: *[Signature]*  
PC. NO. 6190  
5 OF 9

APPROVAL INDICATED AT RIGHT  
COVERS ONLY PAGES 5 TO 9 IN-  
CLUSIVE OF P.C. 6190

35089

PC 0120



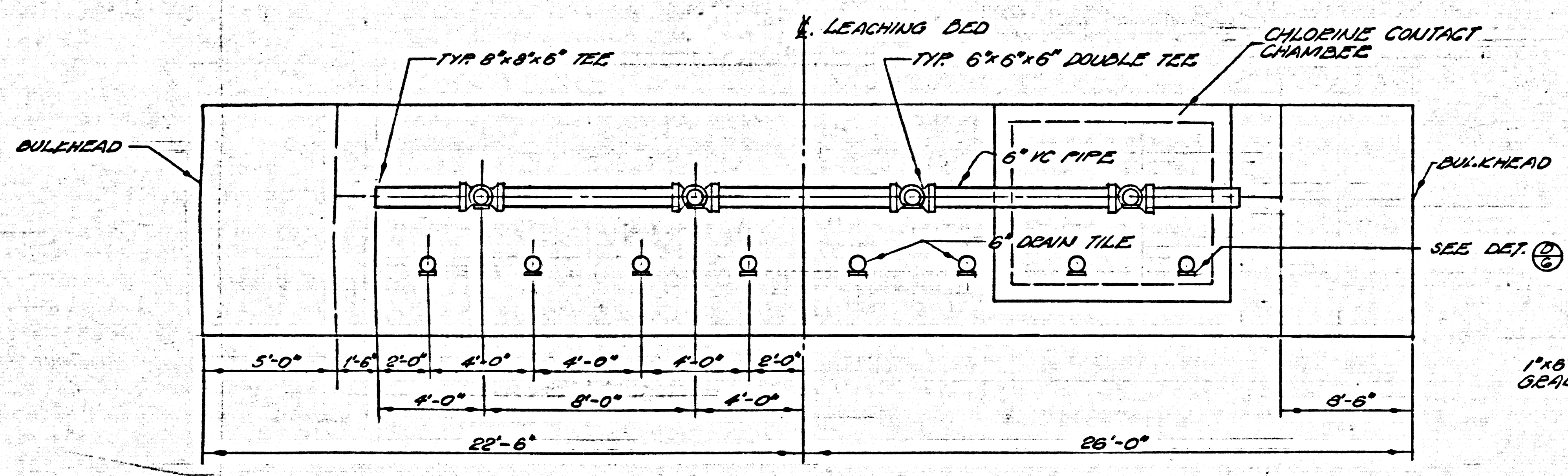


- ① 6"x6"x6" VC
- ② 6"x30" VC ELBOW
- ③ 6"x6"x6" VC TEE

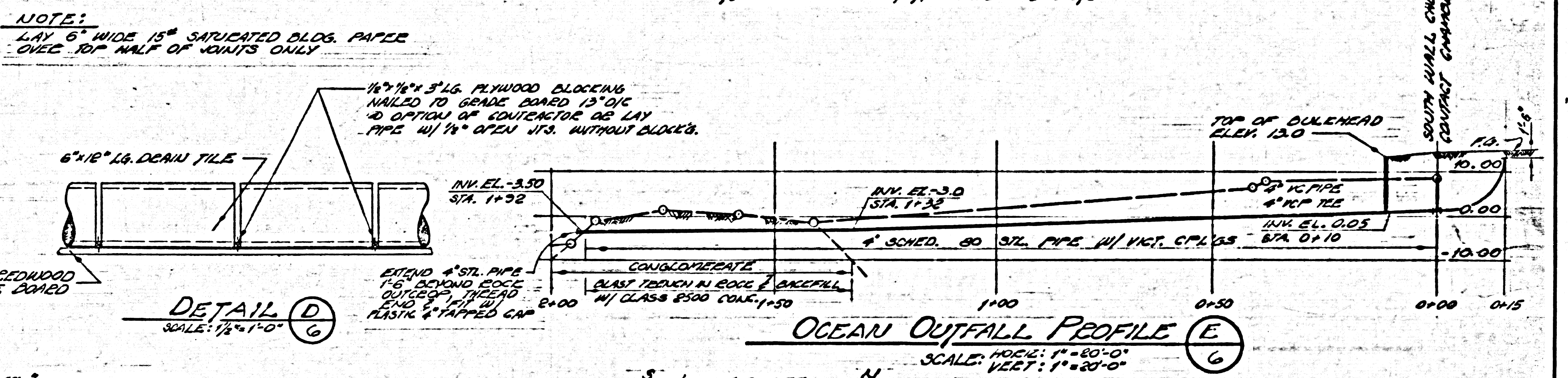
**PLAN OF LEACHING BED-FILTER**  
SCALE: 1/8" = 1'-0"

- NOTE:**
1. REINFORCING BARS IN DISTRIBUTION M.H. & CHLORINE CONTACT CHAMBER TO BE #4 BARS @ 12" O.C. B.W. - BARS TO BE CENTERED IN WALLS & SLABS
  2. MANHOLE FORMING CONCRETE: ALHAMBRA FORD A 1254-D, W/ 2" COMP. BASELITE & 2" CLASS 80'S OR APPROVED EQUAL (2 REQ'D)
  3. MANHOLE STEPS: 3/4" ROUND GALV. IRON BARS COATED W/ ASPHALTUM PAINT, LOS ANGELES COUNTY STA. NO. 5-8-102
  4. BATTLE PLANKS TO BE OF 2" REDWOOD 4'-0" x 3'-6", 5'-0" x 3'-6" SECURED TO 8" WALL BY 1/4" x 16" LG. STEEL W/ 1/4" BOLTS @ 3'-0" O.C.

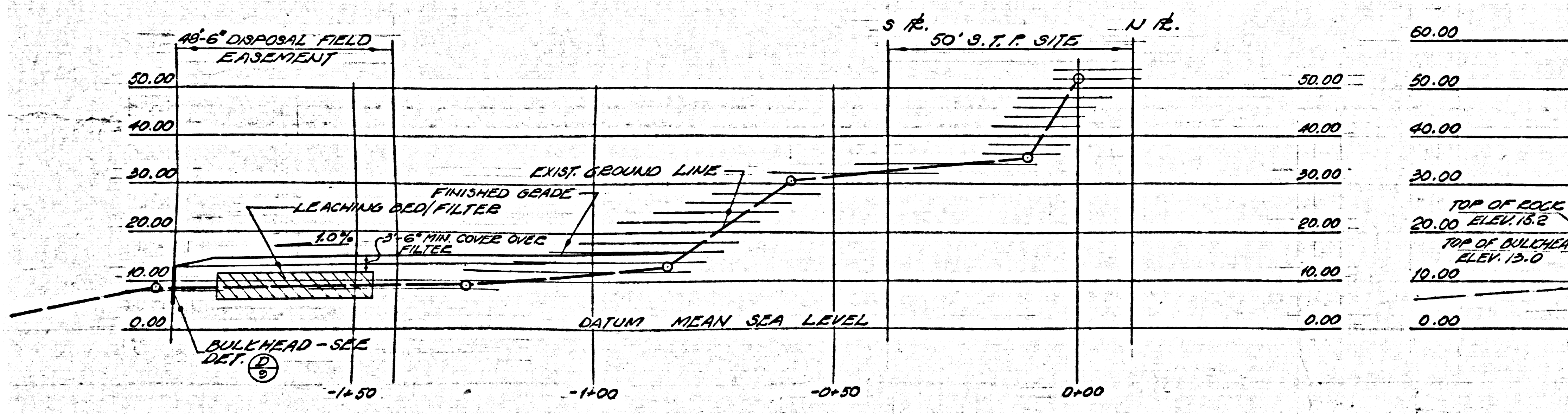
35087



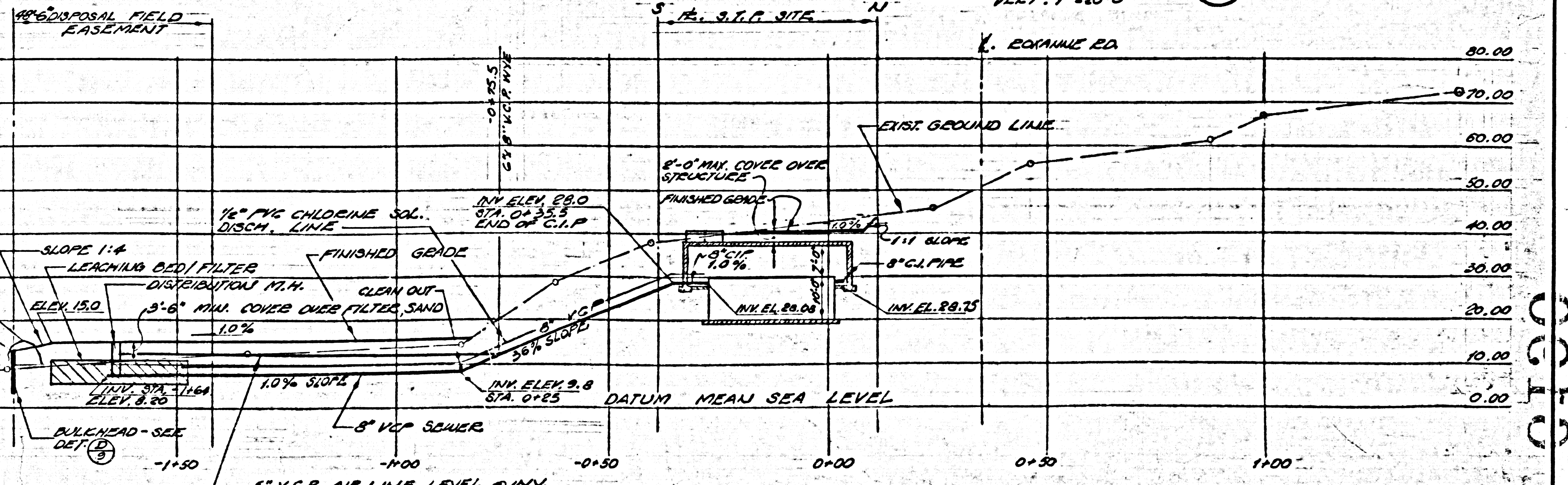
**SECTION C**  
SCALE: 1/8" = 1'-0"



**OCEAN OUTFALL PROFILE E**  
SCALE: 1" = 20'-0"



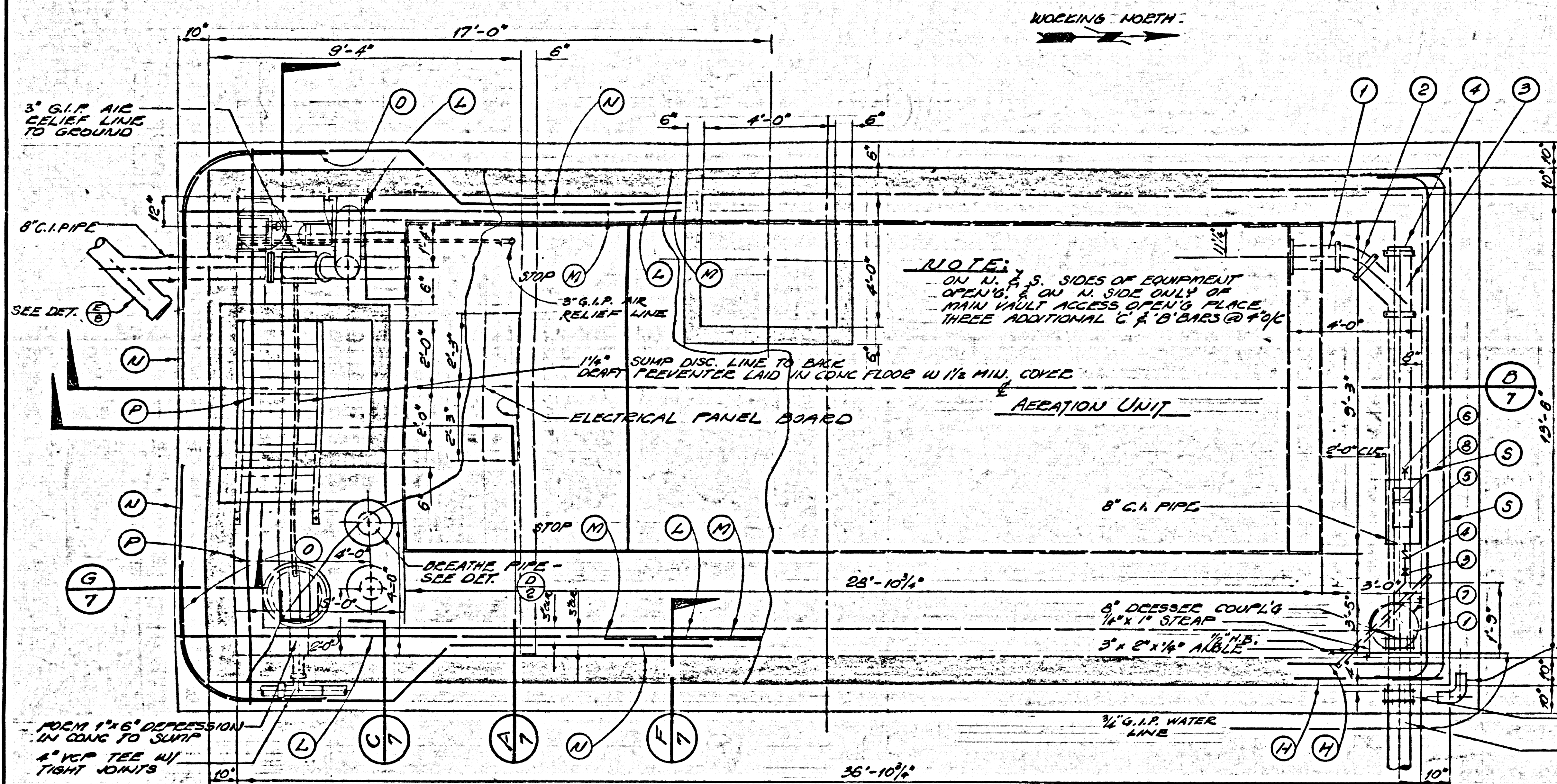
**PROFILE F**  
SCALE: HORIZ. 1" = 20'-0"  
VERT. 1" = 20'-0"



**PROFILE G**  
SCALE: HORIZ. 1" = 20'-0"  
VERT. 1" = 20'-0"

DRAINFIELD SECTIONS & PROFILES  
COUNTY OF LOS ANGELES, CALIF.  
JOHN A. LAMBIE COUNTY ENGINEER



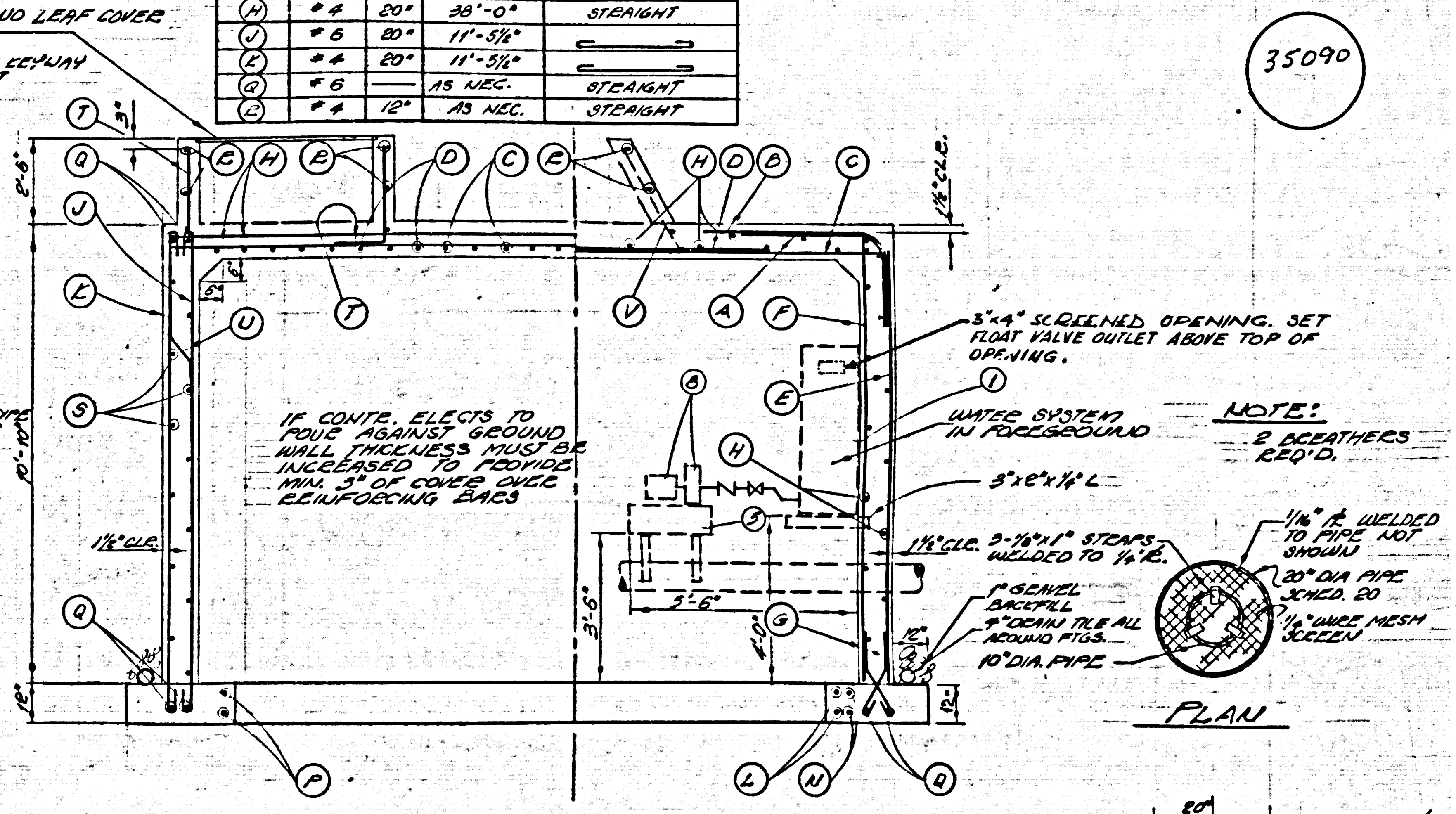
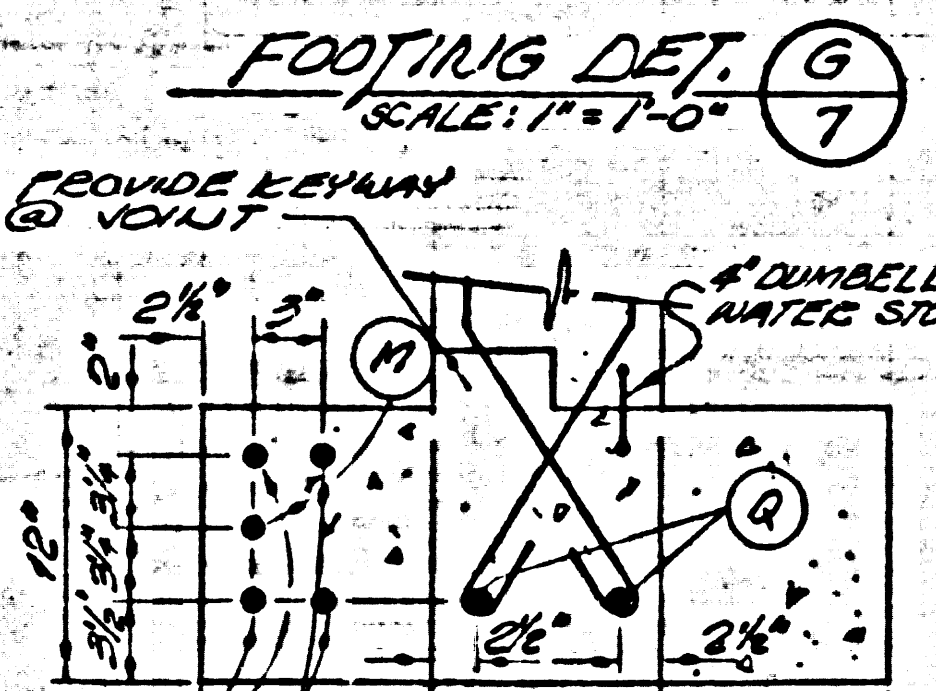
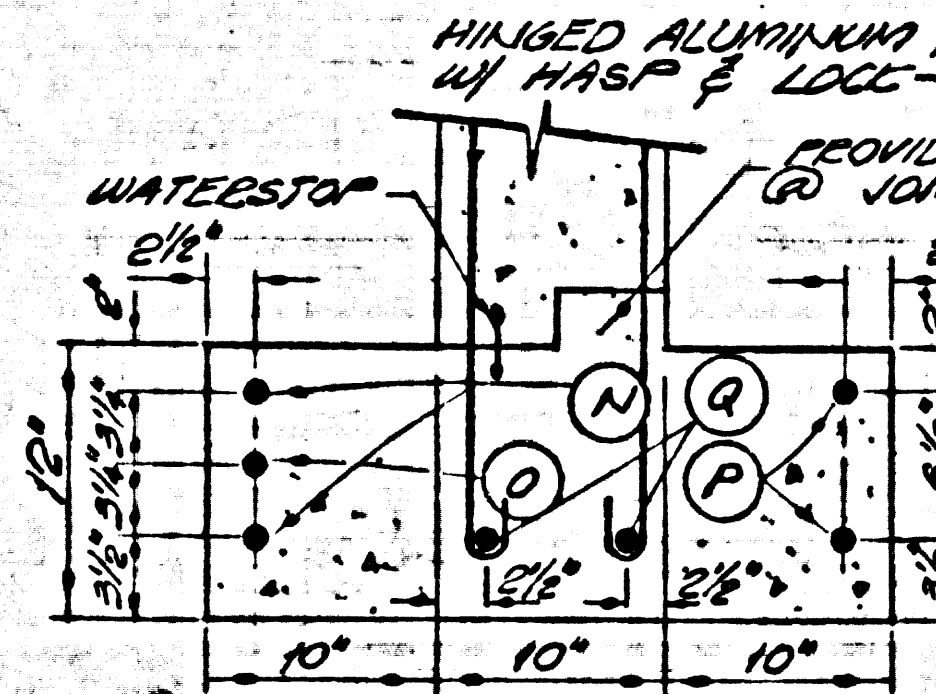


PIPING SCHEDULE

1	8" VCT/FL. NIPPLE C.I.
2	8" VCT/45° BEND C.I.
3	8" VCT. PLUG C.I.
4	8" VCT./BALL 45° BEND C.I.

REINFORCING SCHEDULE

BAR	SIZE	O.C.	LENGTH	SHAPE	BAR	SIZE	O.C.	LENGTH	SHAPE
(A)	#6	16"		9" x 4"	(S)	#4	20"	14'-0 1/2"	8"
(B)	#6	16"		2' x 3'	(T)	#3	12"		12" x 6" PLATE
(C)	#7	16"	14'-0"	STRAIGHT	(U)	#6	20"	10' x 2, 11'-3 1/2"	AS NEC'D
(D)	#7	16"	9'-0"	STRAIGHT	(V)	#4	12"		AS NEC'D
(E)	#6	8"	10'-0"	STRAIGHT					
(F)	#4	20"	10'-0 1/2"	STRAIGHT					
(G)	#4	8"		7" x 15" x 1/2"					
(H)	#4	20"	28'-0"	STRAIGHT					
(I)	#6	20"	11'-5 1/2"	STRAIGHT					
(J)	#4	20"	11'-5 1/2"	STRAIGHT					
(K)	#6	20"	11'-5 1/2"	STRAIGHT					
(L)	#6	12"	AS NEC.	STRAIGHT					
(M)	#4	12"	AS NEC.	STRAIGHT					



SECTION A SCALE: 1/8" = 1'-0"

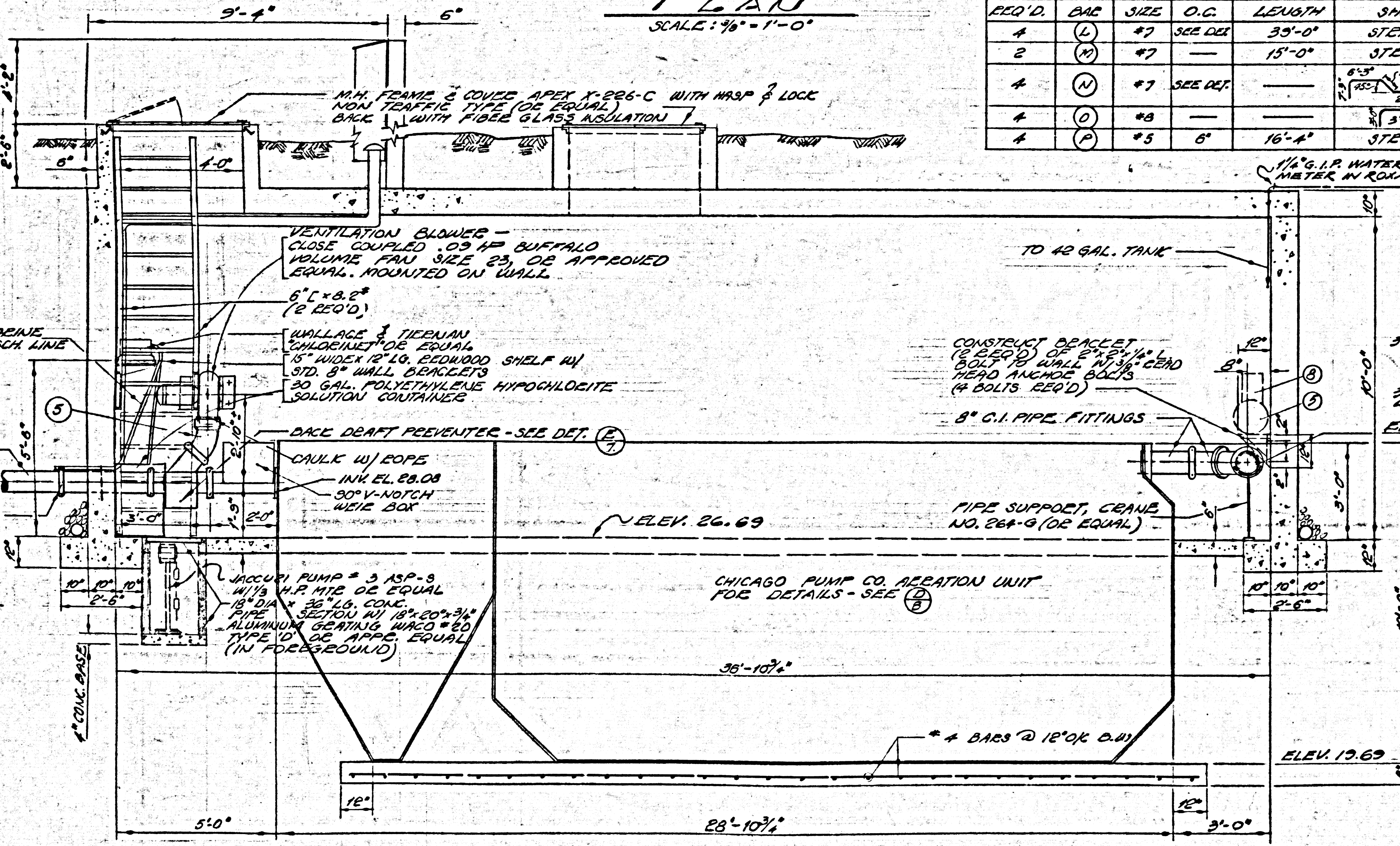
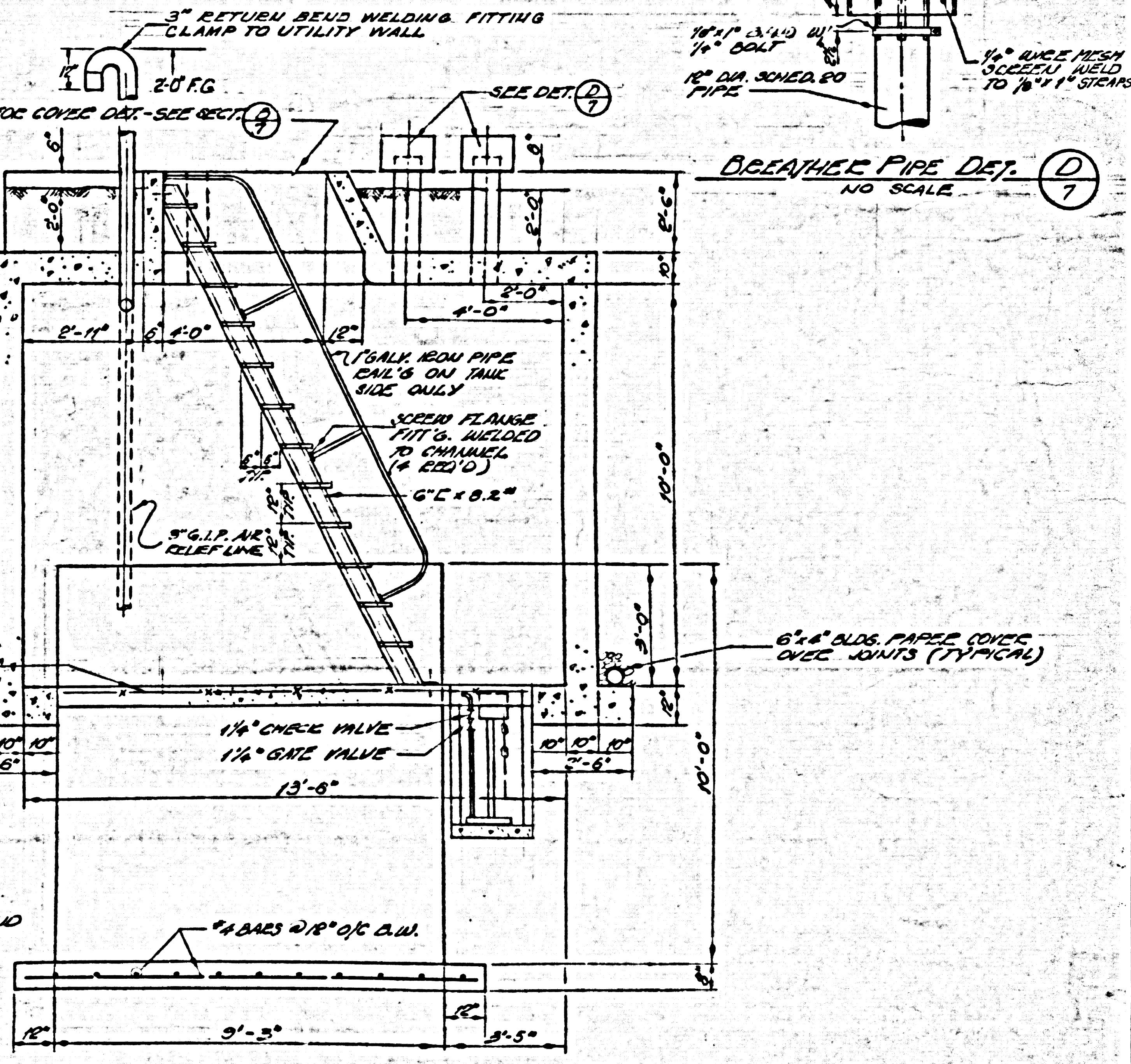
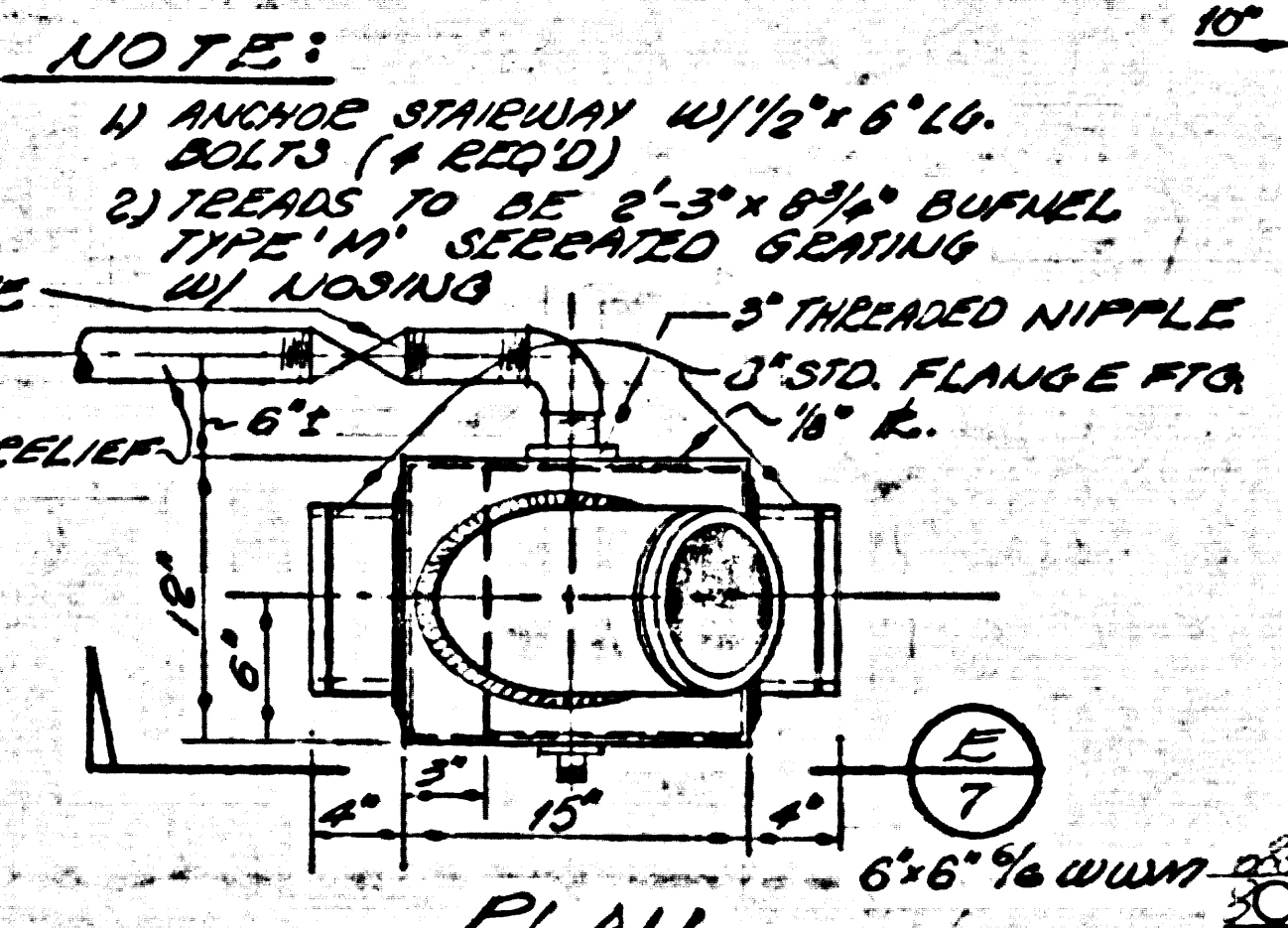
PLAN SCALE: 1/8" = 1'-0"

REINFORCING SCHEDULE

REQ'D	BAR	SIZE	O.C.	LENGTH	SHAPE
1	(L)	#7	SEE DET.	35'-0"	STRAIGHT
2	(M)	#7		15'-0"	STRAIGHT
3	(N)	#7	SEE DET.		8" x 18" x 1/2" (REQ'D)
4	(O)	#8		3'-0"	STRAIGHT
5	(P)	#5	5"	16'-4"	STRAIGHT

PIPING SCHED. WATER SYSTEM

- 16" x 48" 12 GAL. GALV. TANK
- 1" GLOBE VALVE
- 1" CHECK VALVE
- 12" x 24" 12 GAL. GALV. PRESS. TANK
- 3/4" HOSE END
- 1/4" CL. VAL. 1/2" EA. FLOAT VALVE
- JACUZZI SEP. THIR PUMP



BACK DRAFT PREVENTER DET.

SECTION C SCALE: 1/8" = 1'-0"

STRUCTURAL DETAILS  
 COUNTY OF LOS ANGELES CALIF.  
 JOHN A. LAMBIE COUNTY ENGINEER

LECHUZA POINT SUBDIVISION  
 PROGRESS PROPERTIES INC. SUITE 335, 3350 WILSHIRE BLVD. LOS ANGELES, CALIFORNIA

POMEROY AND ASSOCIATES  
 CIVIL AND CHEMICAL ENGINEERS

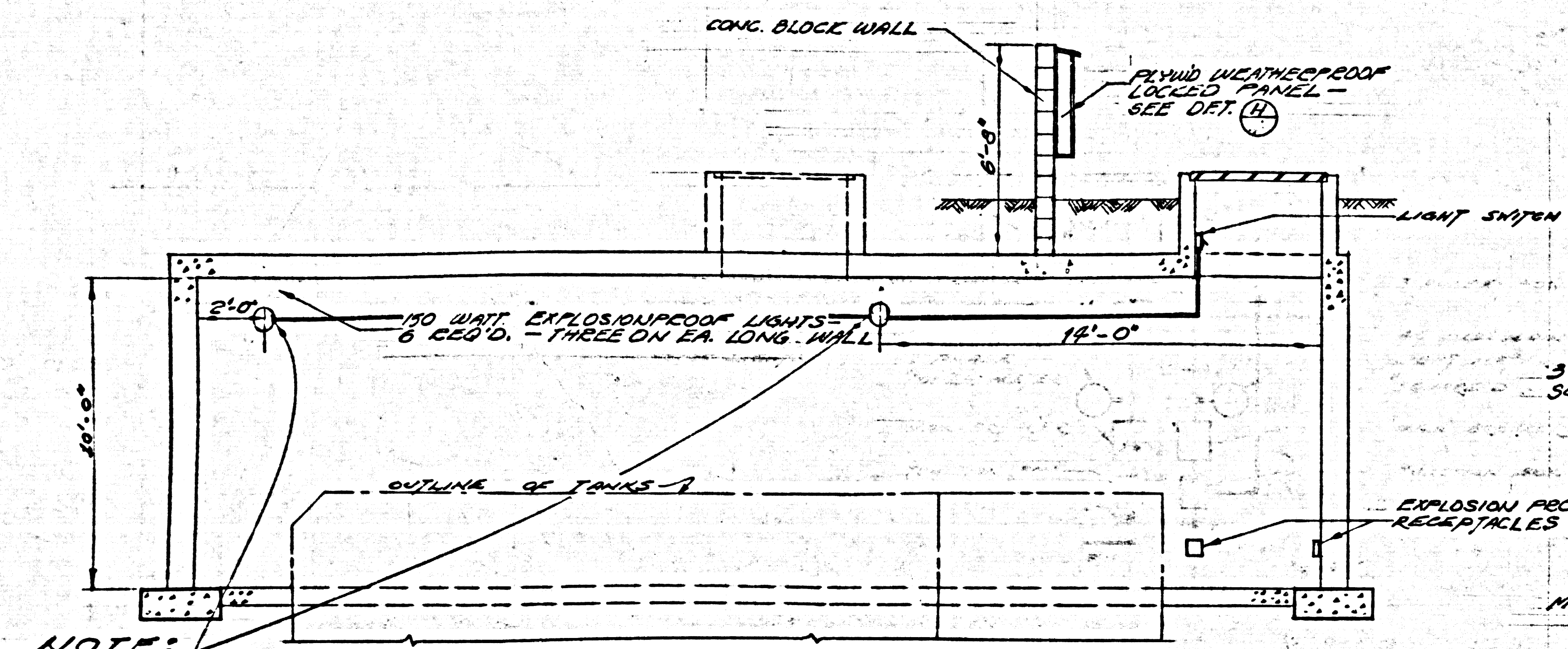
DESIGNED BY J.M.B.  
 DRAWN BY J.C.B.  
 CHECKED BY Richard Pomroy

PC NO. 6190  
 7 OF 9



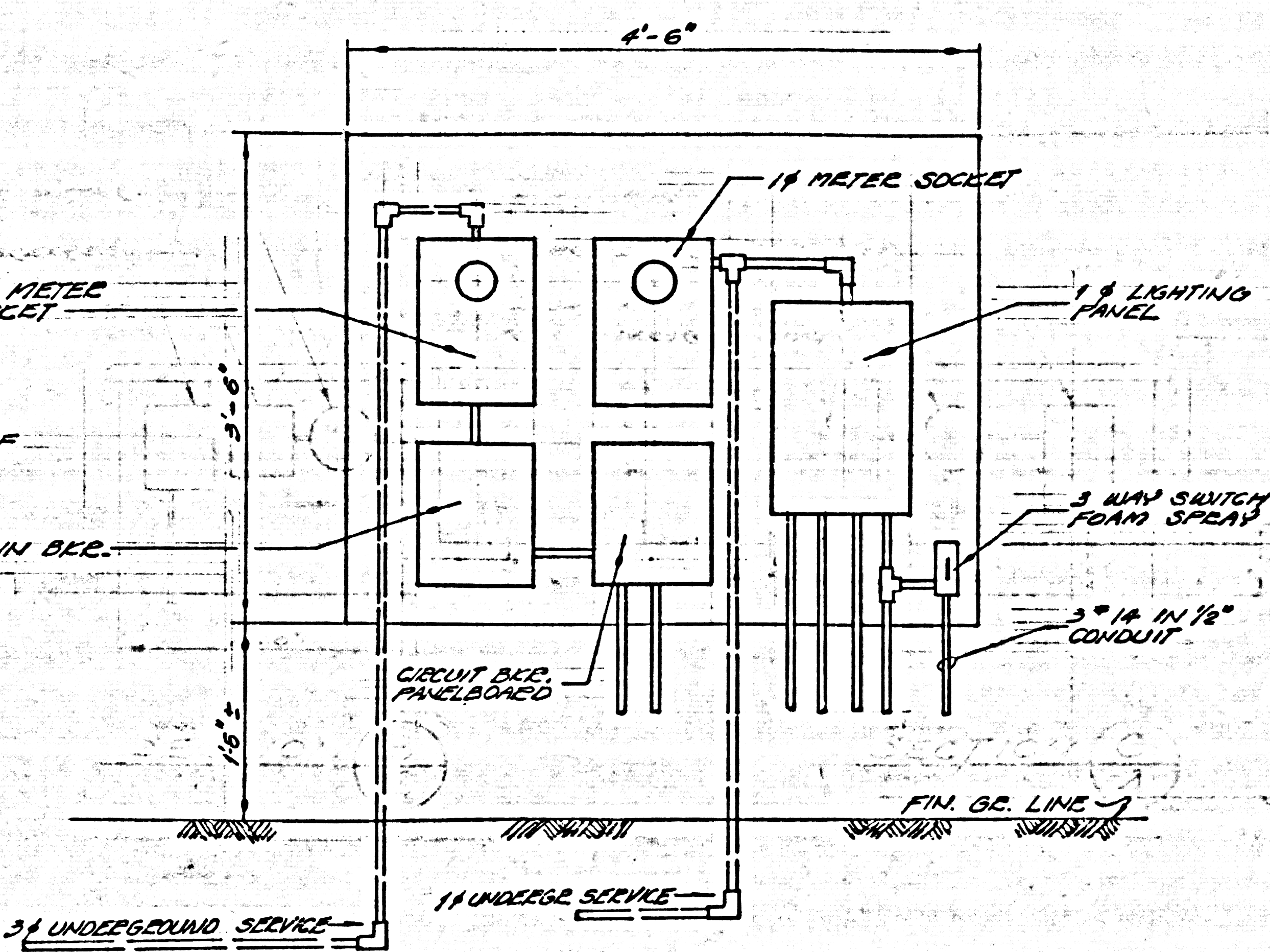




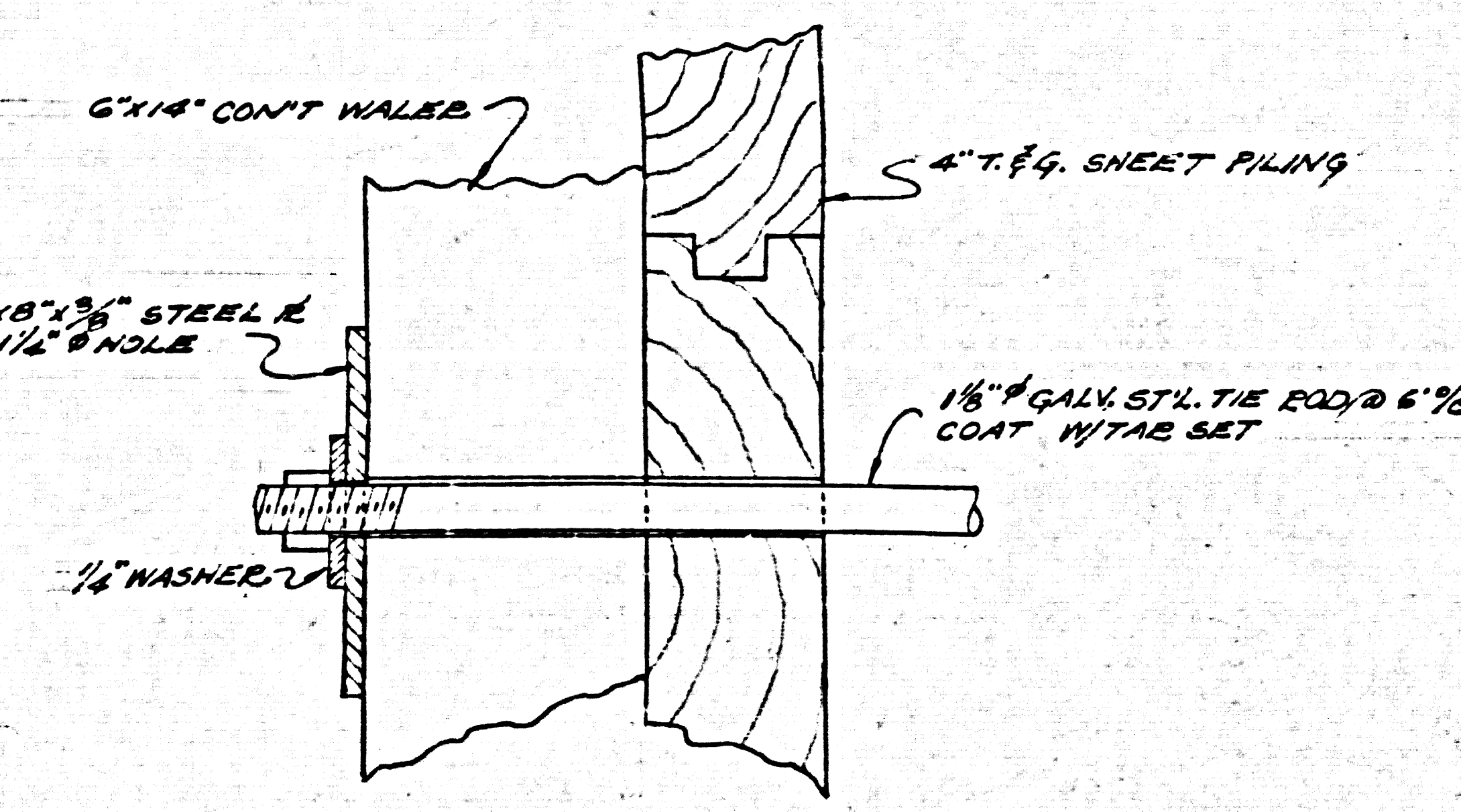


NOTE:  
LIGHT FIXTURES TO BE MOUNTED ON WALLS, 10" FROM CEILING.

SECTION A

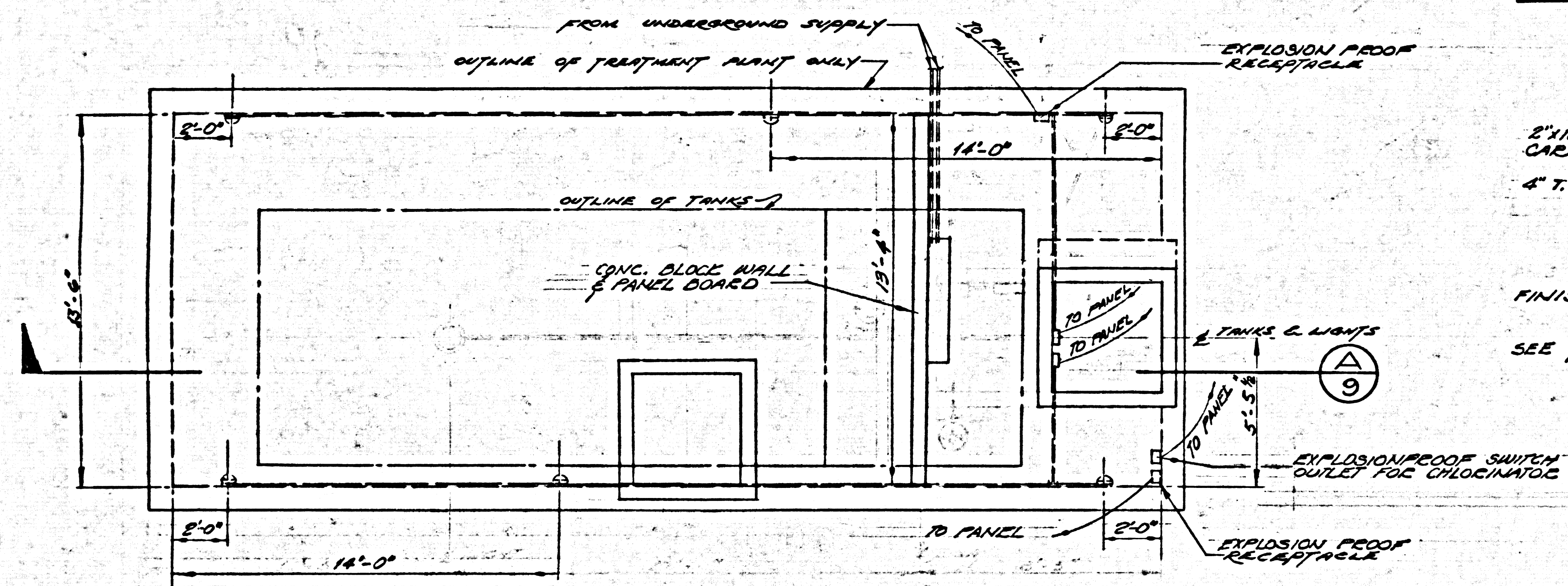


ELECTRICAL EQUIPMENT LAYOUT  
SCALE: 1"=1'-0"

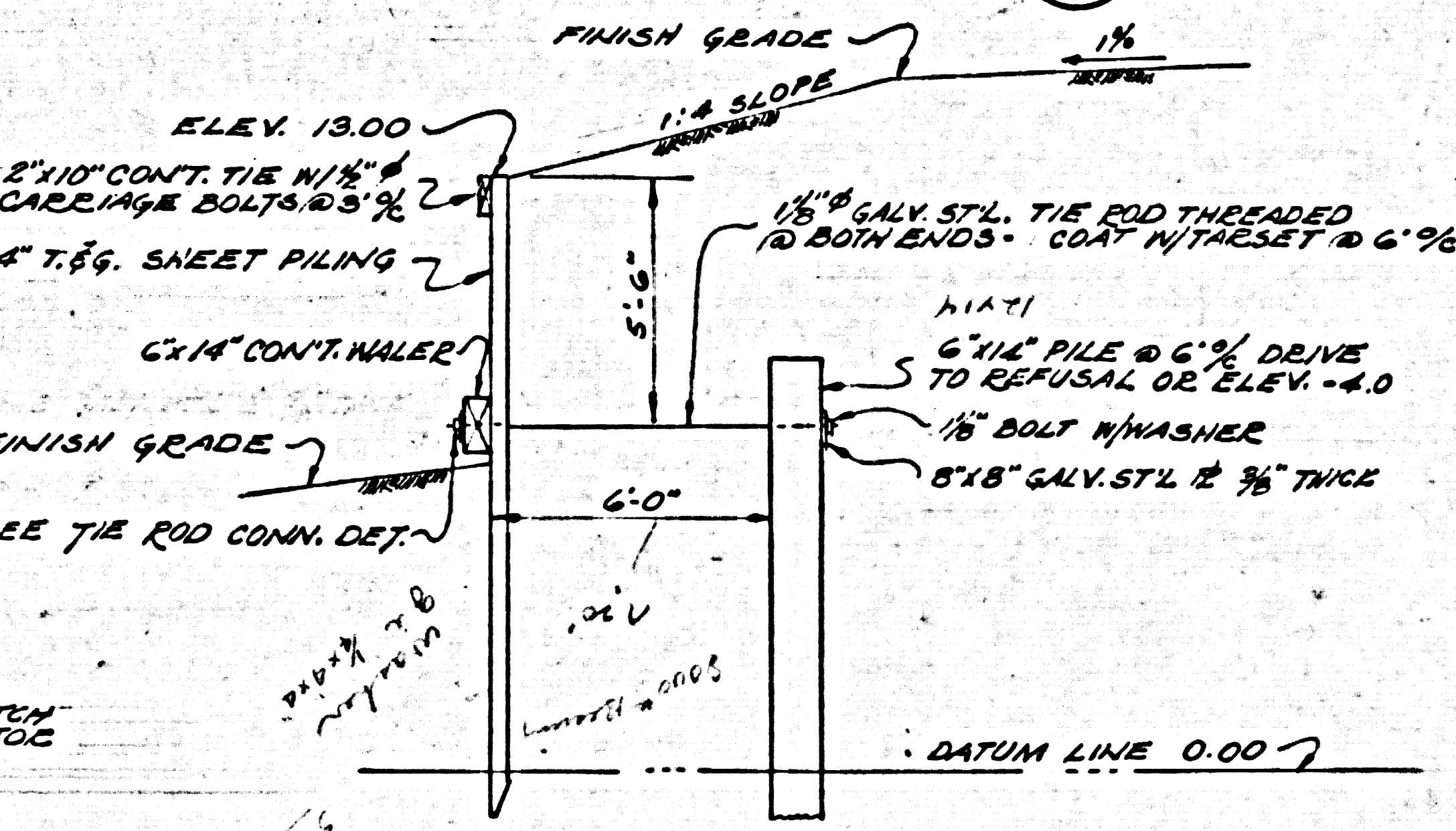


TIE ROD CONNECTION DET.  
SCALE: 3"=1'-0"

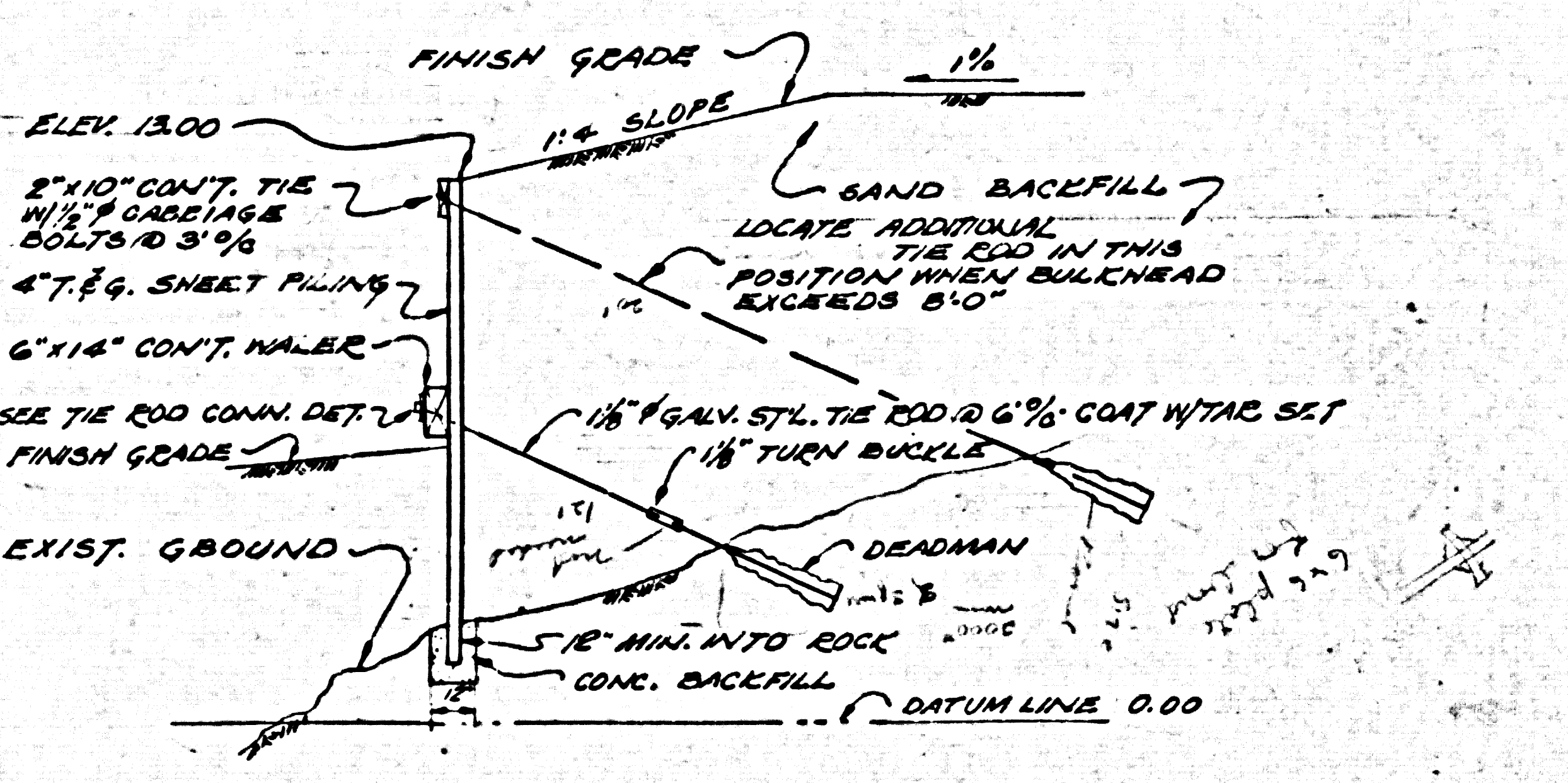
35088



PLAN OF ELECTRICAL LAYOUT

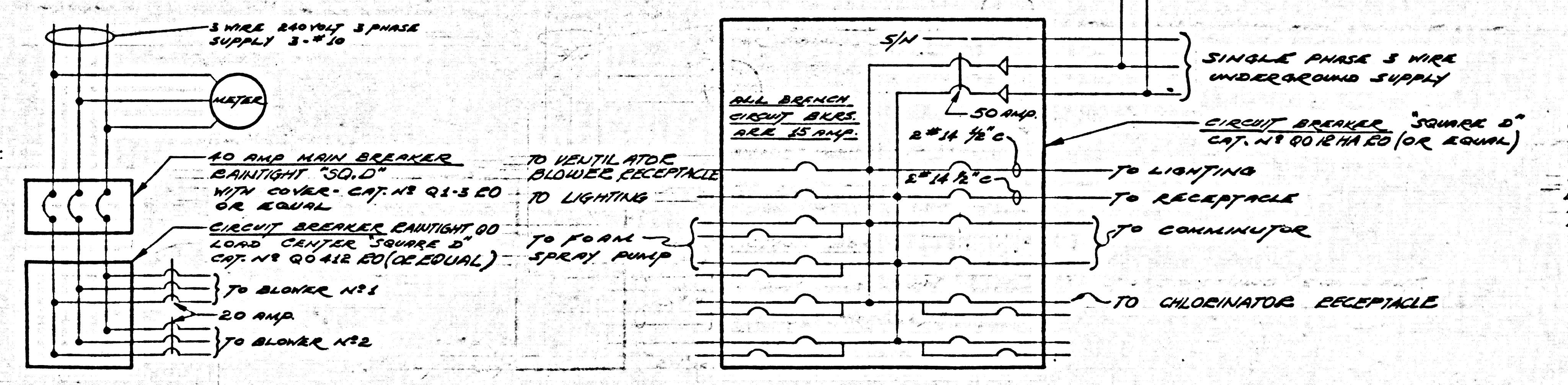


TYPICAL SECTION IN SAND  
SCALE: 1/2"=1'-0"



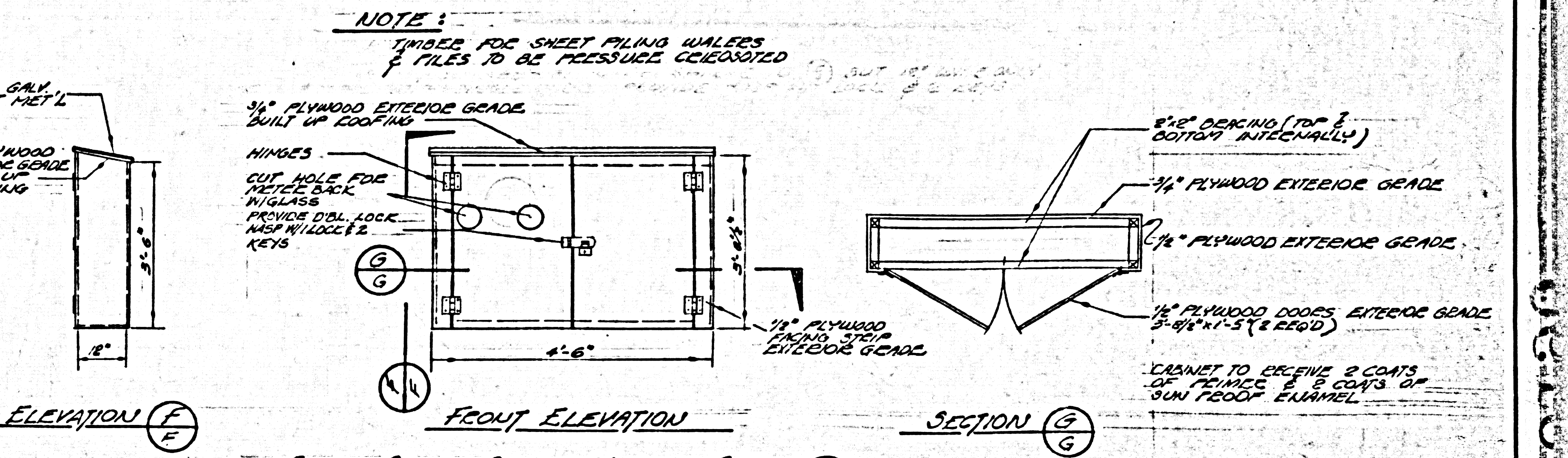
TYPICAL SECTION IN ROCK  
SCALE: 1/2"=1'-0"

BULKHEAD DETAIL  
SCALE: 1/2"=1'-0"



POWER LINE DIAGRAM

LIGHTING LINE DIAGRAM



ELEVATION F

FRONT ELEVATION

SECTION G

CONTROL CENTER CABINET LAYOUT & DET.  
DO NOT SCALE

ELECTRICAL & MISCELLANEOUS DETAILS

COUNTY OF LOS ANGELES CALIF.  
JOHN A. LAMBIE COUNTY ENGINEER

NO	DATE	REVISION

LECHUZA POINT SUBDIVISION  
PROGRESS PROPERTIES INC. SUITE 335, 3350 WILSHIRE BLVD. LOS ANGELES, CALIFORNIA

POMEROY AND ASSOCIATES  
CIVIL AND CHEMICAL ENGINEERS  
600 S FAIR CAYS AVE PASADENA CALIFORNIA

DESIGNED BY J.M.D.  
DRAWN BY A.D.P.  
CHECKED BY Richard Pomroy

PC NO. 6190  
9 OF 9