

FEDERAL PROJECT NO.	SHEET NO.	TOTAL SHEETS
	7	

DIST.	COUNTY	ROUTE	SEC.	SHEET NO.	TOTAL SHEETS
VII	L.A.	170			

DATE	REVISION	APPROVED
11-29-62	Relocated M.L. in R/W, Lot 641 Tract No. 16194.	J.V. Usher
10-29-63	Relocated sewer in Lot 641.	B.J. Usher
11-5-63	Resurvey necessitated change of invert.	B.J. Usher

36177

Approved: _____
Dist. Eng. Dist.

PLAN & PROFILE OF
SANITARY SEWERS
TO BE CONSTRUCTED UNDER
PRIVATE CONTRACT NO. 6192
SHEET 5-1 OF 15 SHEETS NOVEMBER, 1962
SCALE: Horiz: 1"=50'; Vert: 1"=5' W.S. 33
COUNTY OF LOS ANGELES, CALIFORNIA
PREPARED, JOHN A. LAMBE, COUNTY ENGINEER

BY Richard S. Kuhn
ASST. SANITATION ENGINEER - R.C.E. 7860
APPROVED, J.D. PARKHURST, CHIEF ENGINEER
COUNTY SANITATION DISTRICT #2

BY M. J. ...
OFFICE ENGINEER
APPROVED, G.E. DANIELSEN, CITY ENGINEER
CITY OF SANTA FE SPRINGS

BY Elmer E. ...
CITY ENGINEER
APPROVED, L.P. LEAVITT, CITY ENGINEER
CITY OF DOMINEY

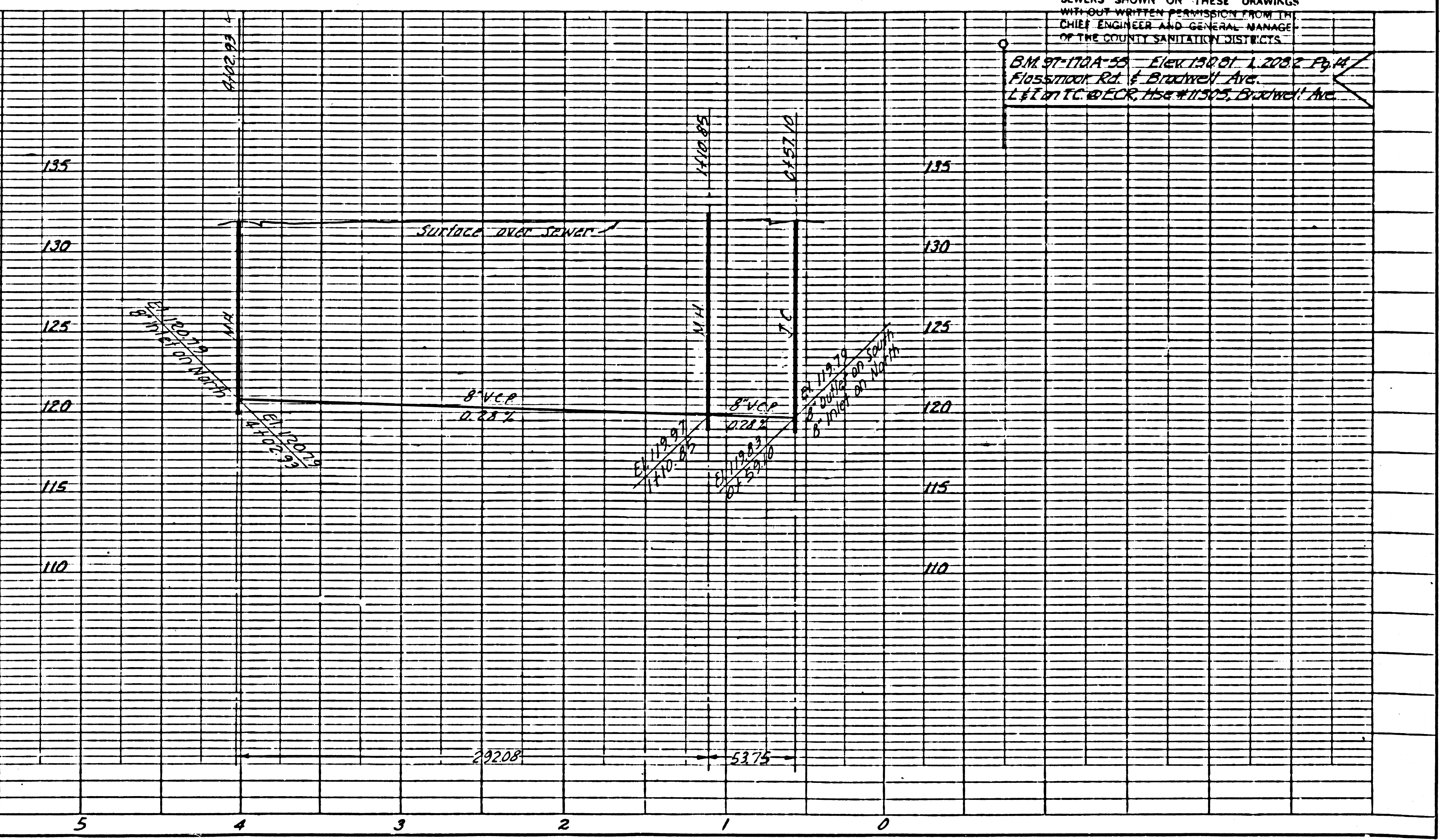
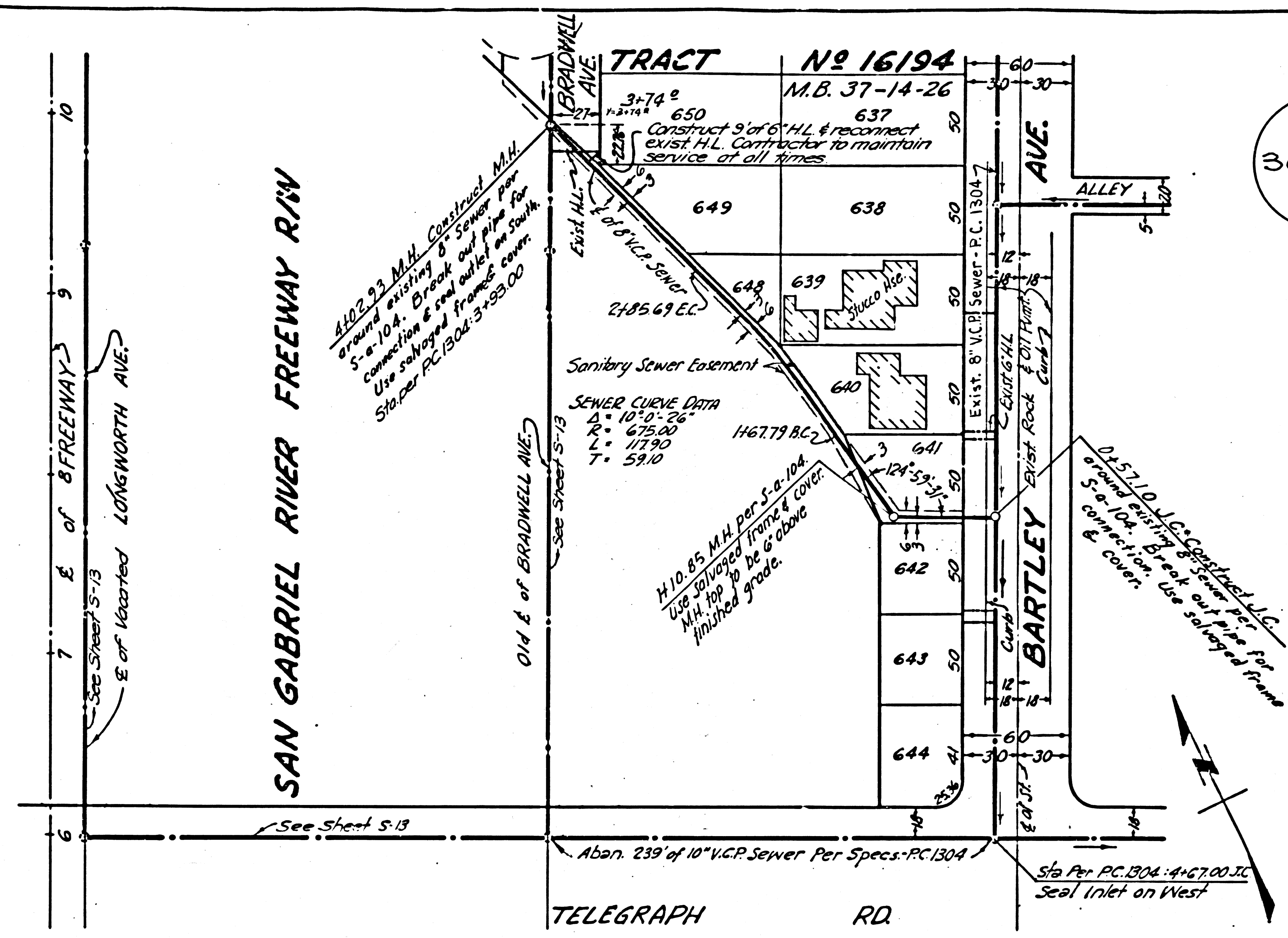
BY D. ...
CITY ENGINEER
APPROVED, F.A. ROOS, CITY ENGINEER
CITY OF NORWALK

BY J. ...
CITY ENGINEER

Designed L. Jaime
Checked R. Ung

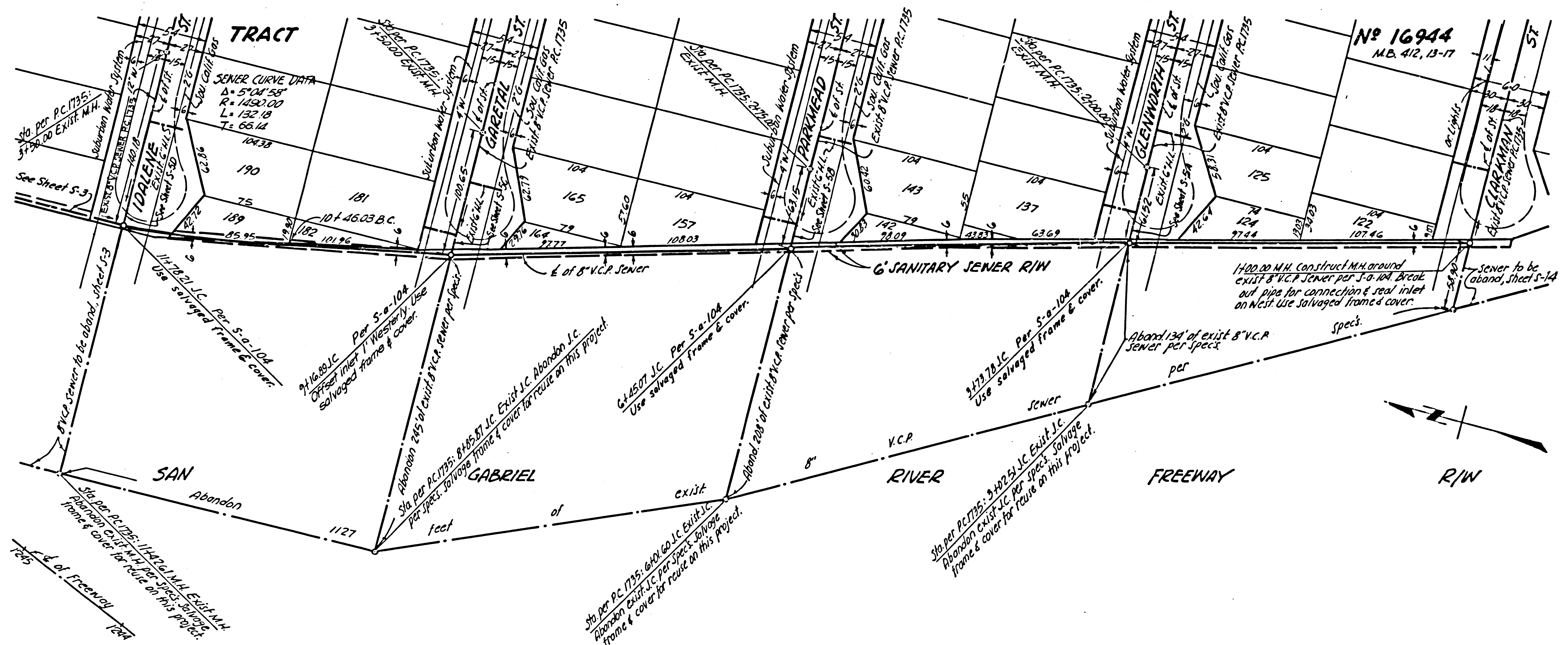
NO CONNECTIONS FOR THE DISPOSAL OF
INDUSTRIAL WASTES SHALL BE MADE TO
SEWERS SHOWN ON THESE DRAWINGS
WITHOUT WRITTEN PERMISSION FROM THE
CHIEF ENGINEER AND GENERAL MANAGER
OF THE COUNTY SANITATION DISTRICTS.

B.M. 97-172A-25 Elev. 120.01 L. 2002 P. 14
Flossmoor Rd. & Bradwell Ave.
L & T on TC & ECR. Hse # 11305, Bradwell Ave.



Cu. Exc.
Yds. Emb.
Sta.

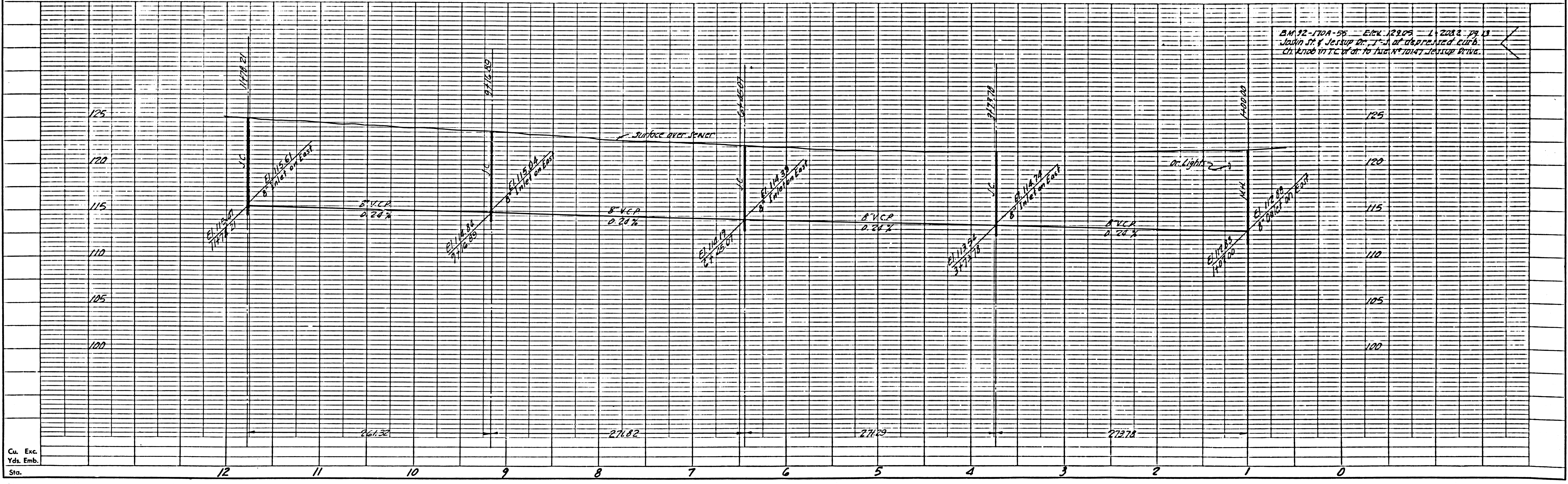
Approved _____ Dist. Eng. Dist. _____



PC 6192
Sheet S-2 of 15 Sheets

36178

DESIGNED BY L. Jaime
CHECKED BY R. Ung



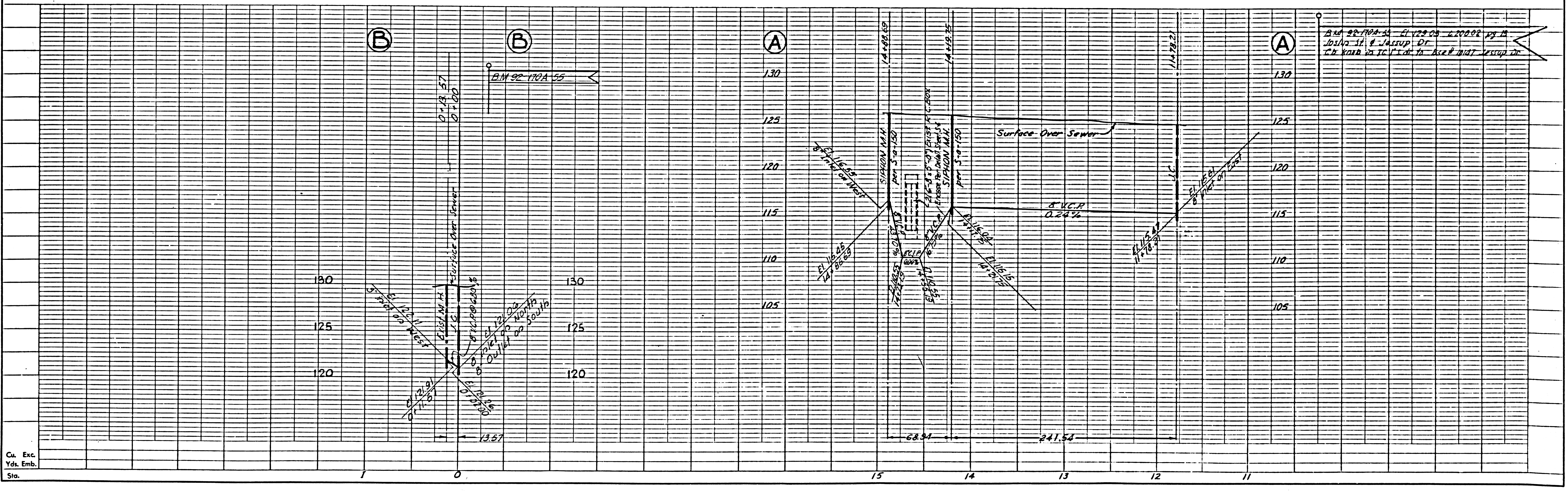
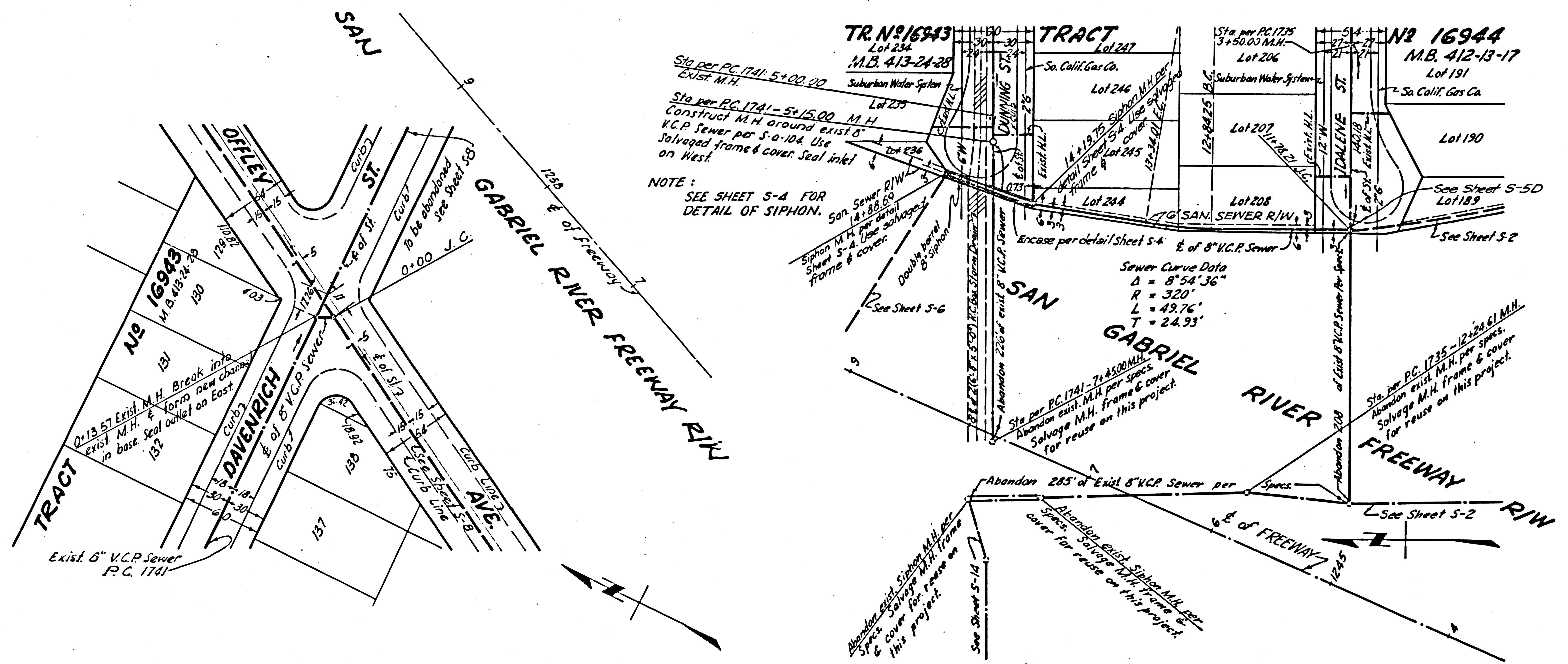
Cu. Exc.
Yds. Emb.
Sta.

Approved: _____
Dist. Eng. Dist. _____

PC 6192
Sheet 5-3 of 15 Sheets

36179

DESIGNED BY L. JAIME
CHECKED BY R. UNG



Cu. Exc.
Yds. Emb.
Sta.

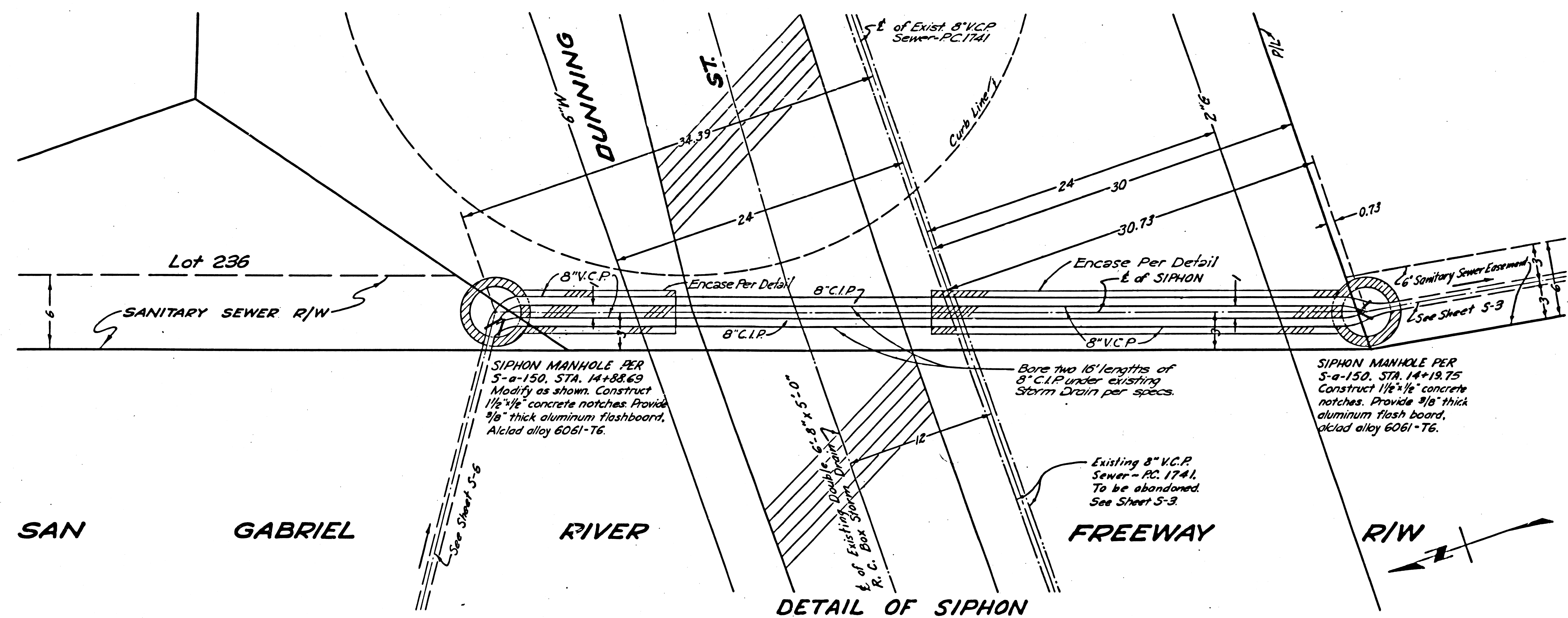
STATE	FEDERAL PROJECT NO.	SHEET NO.	TOTAL SHEETS
CALIF.		7	

DIST.	COUNTY	ROUTE	SEC.	SHEET NO.	TOTAL SHEETS
VII	LA	170			

Approved: _____
Dist. Eng. Dist. _____

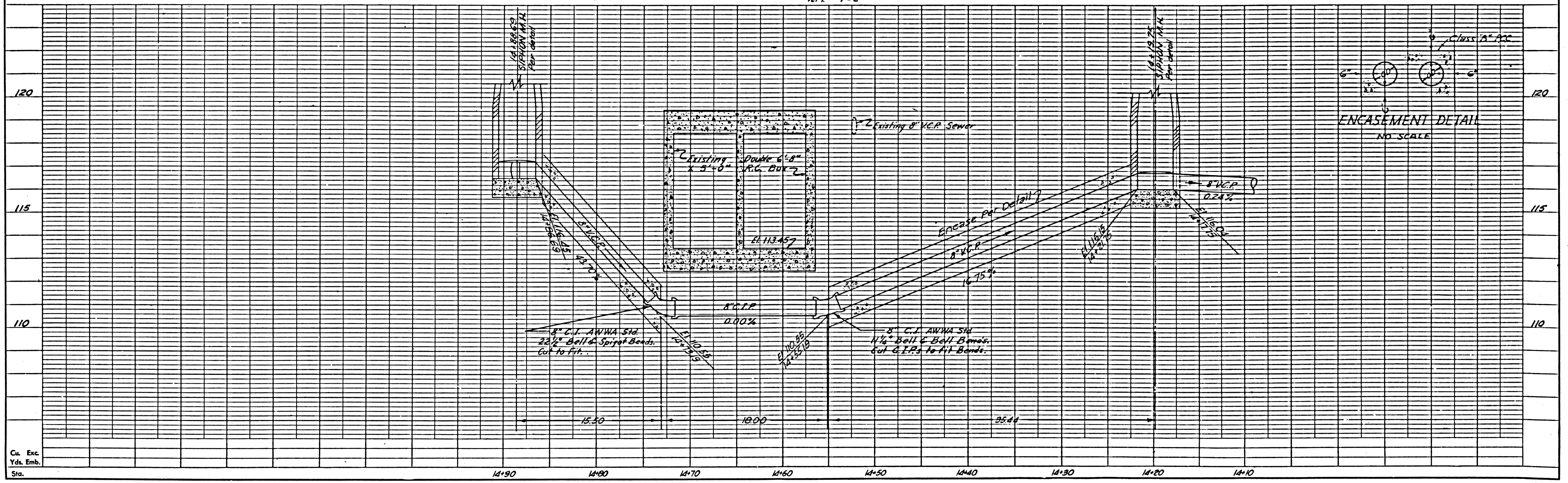
PC 6192
Sheet S-4 of 15 Sheets

36180



DETAIL OF SIPHON
SCALE: Horiz - 1"=5'
Vert - 1"=2'

DESIGNED BY L. JAIME
CHECKED BY R. UNG



ENCASEMENT DETAIL
NO SCALE

Cu. Exc.
Yds. Emb.
Sta.

✓

Approved: _____ Dist. Eng. Dist. _____

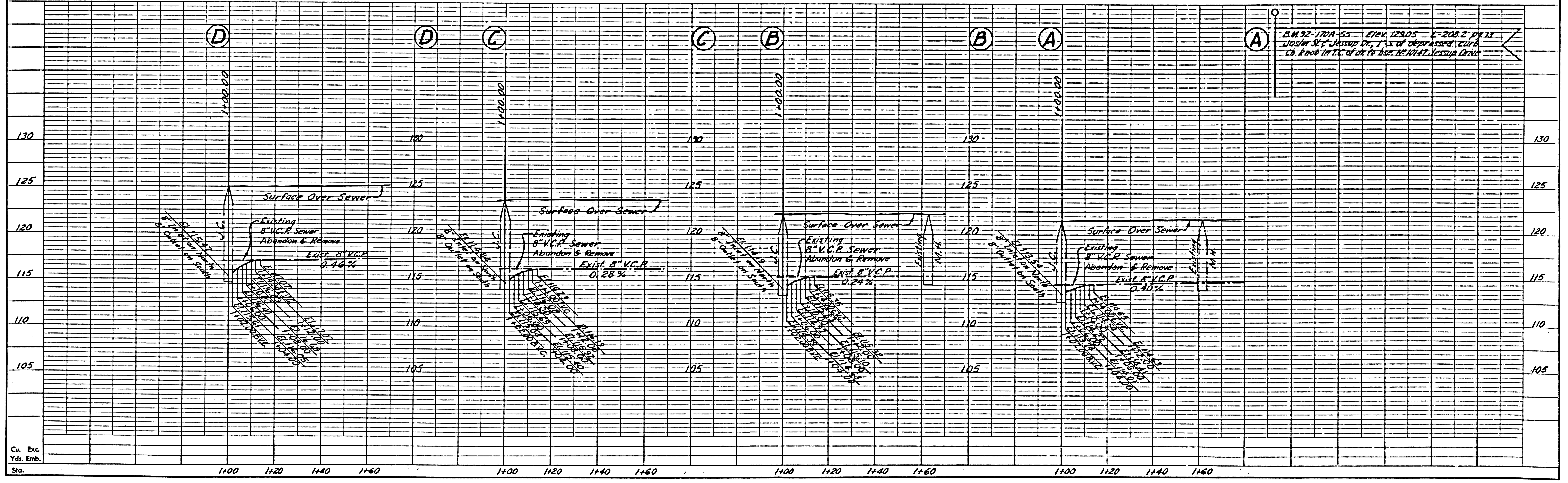
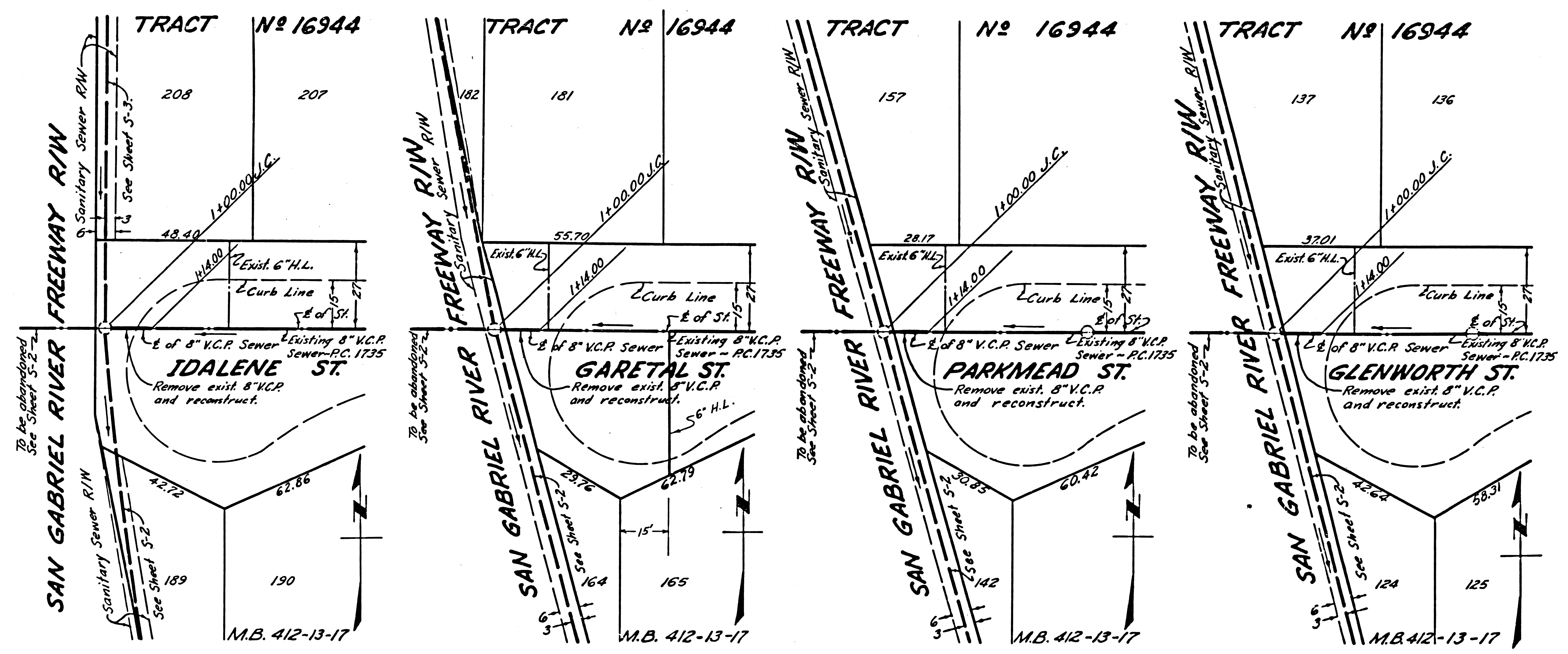
PC. 6192
Sheet 5-5 of 15 Sheets

36181

NOTE:
USE 2' LENGTHS OF 8" V.C.P. WITH MECHANICAL COMPRESSION JOINTS ON VERTICAL CURVES PER SPECIFICATIONS, SECTION 36.

Scale: VERT. 1"=5'
HORIZ. 1"=20'

DESIGNED BY	L. JAIME
CHECKED BY	R. UNG



DATA 92-170A-55 Elev. 128.05 - V=208.2 DY 13
Jasper St. & Jessup Dr. 1' S. of depressed curb
Ch. knob in T.C. of dr. to base of NW 1/4 Jessup Drive

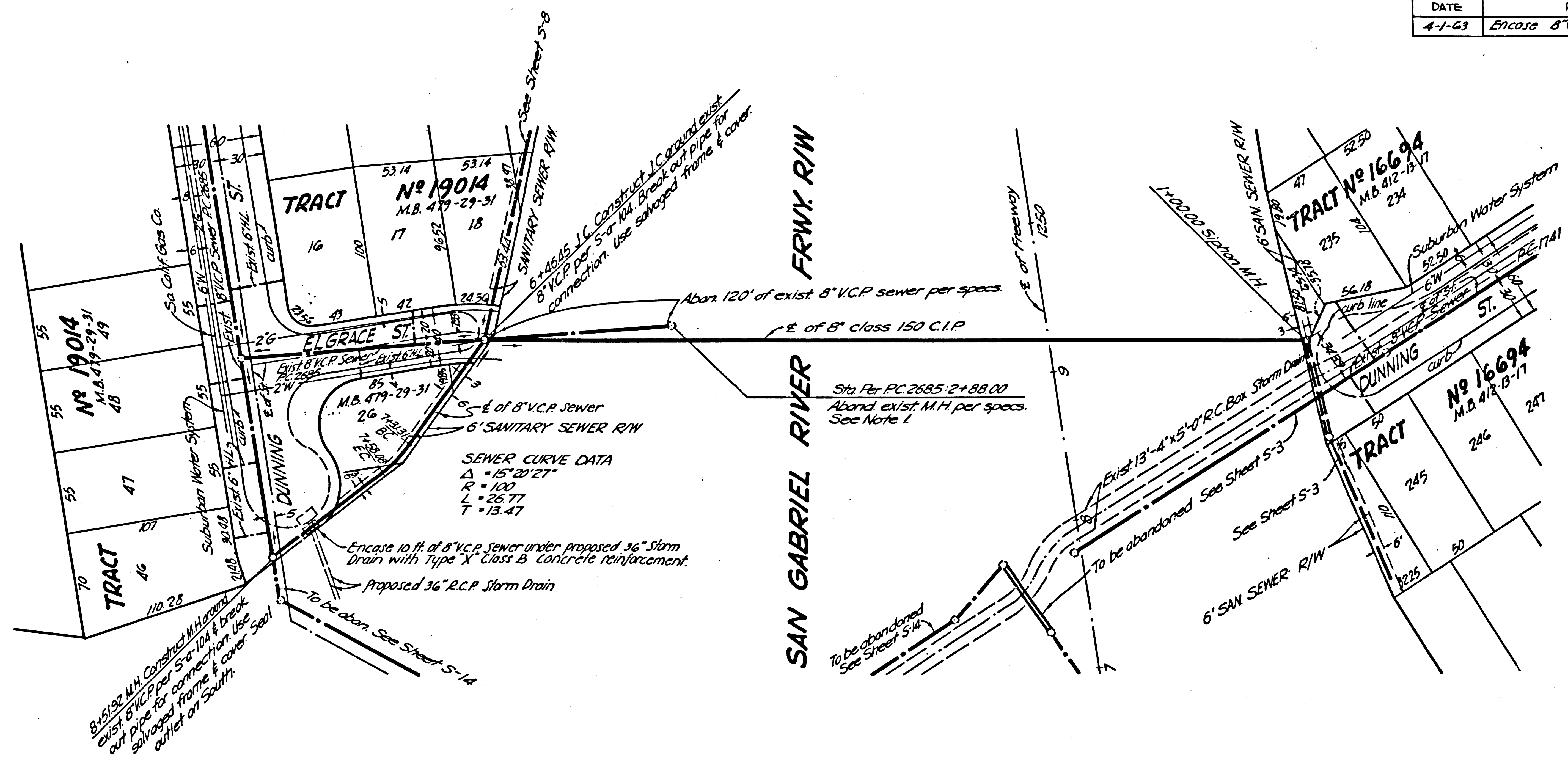
Cu. Exc.
Yds. Emb.
Sta.

✓

DATE	REVISION	APPROVED
4-1-63	Encase 8" V.C.P. Sewer @ Sta. 8+19.5	John D. Row

DIST.	COUNTY	ROUTE	SEC.	SHEET NO.	TOTAL SHEETS
VII	L.A.	170			

Approved: _____
Dist. Eng. Dist. _____

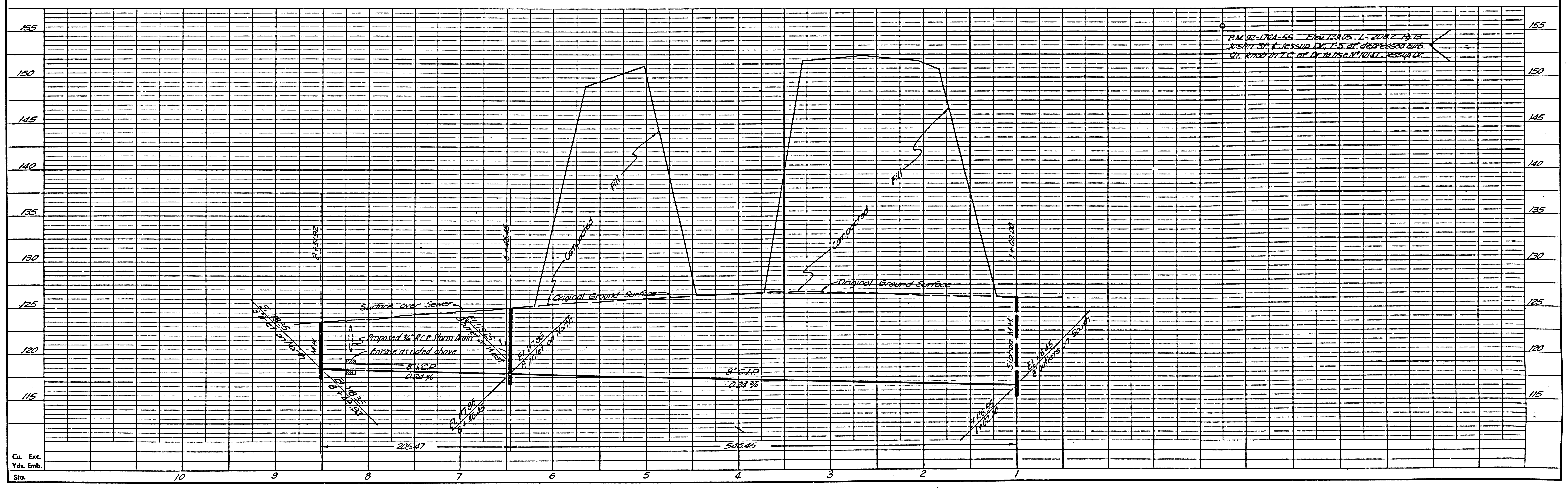


PC. 6192
SHEET 5-6 OF 15 SHEETS

36182

Note:
1. Contractor shall deliver salvaged M.H. frames & covers to County Sewer Maintenance Yard, 1129 E. 53rd St, Los Angeles or 2809 S. Myrtle Ave, Irwindale.

Drawn	V. Joe
Designed	L. Jaime
Checked	R. Ung



Cu. Exc.
Yds. Emb.
Sta.

DIST.	COUNTY	ROUTE	SEC.	SHEET NO.	TOTAL SHEETS
VII	L.A.	170			

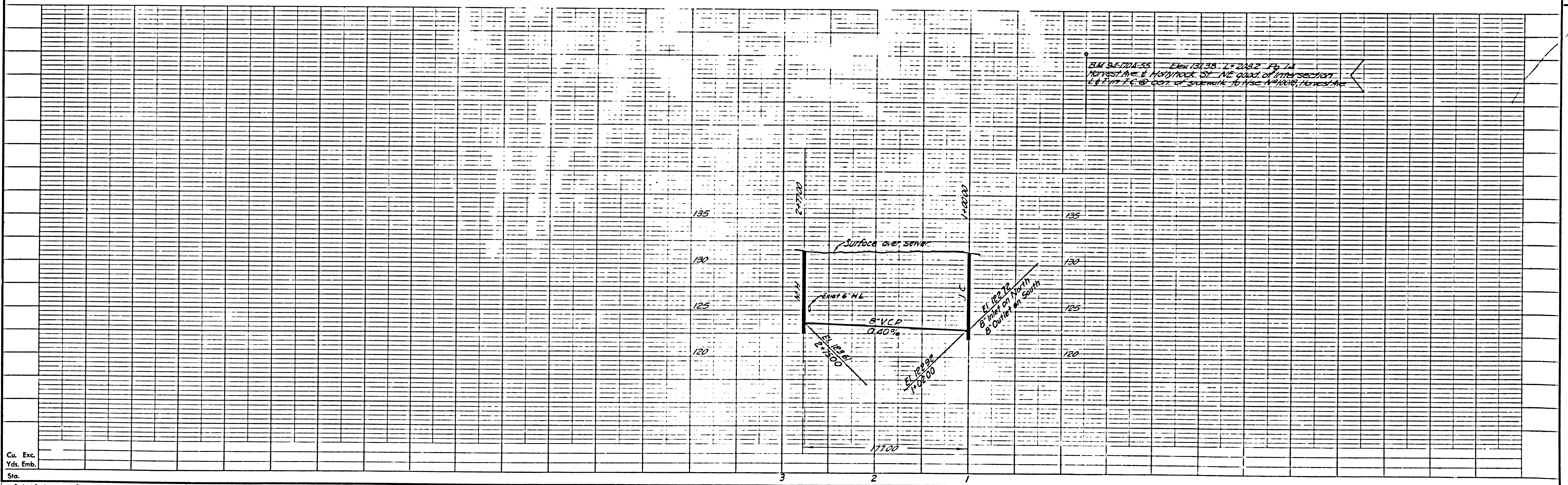
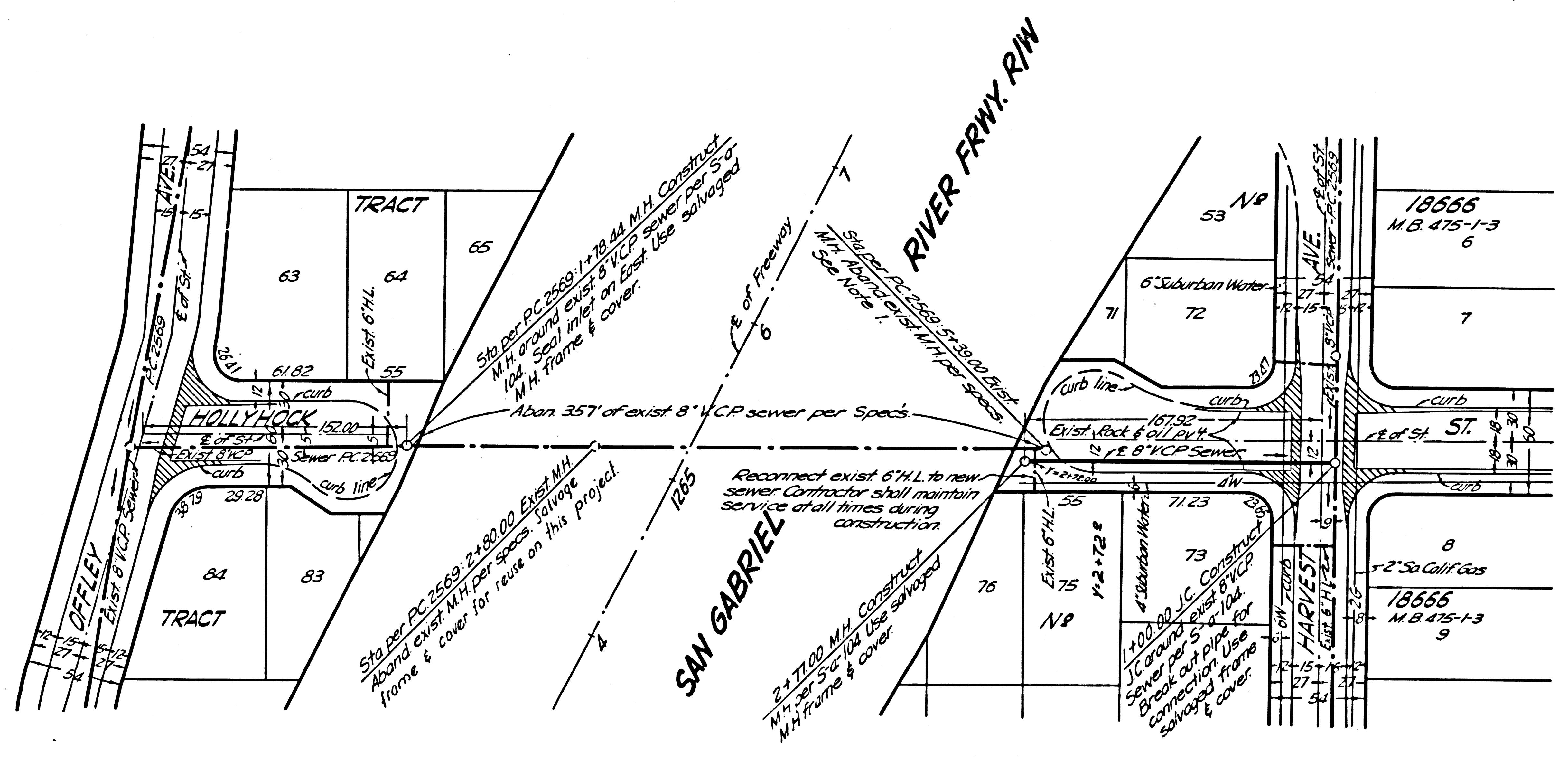
Approved: _____
Dist. Eng. Dist.

PC.6192
SHEET 5-7 of 15 SHEETS

36183

Note:
1. Contractor shall deliver salvaged M.H. frames & covers to County Sewer Maintenance Yard, 1129 E. 59th St, Los Angeles or 2849 S. Myrtle Ave, Irwindale.

Drawn	V. Joe
Designed	G. Esquer
Checked	R. Ung



BM 94774-55 Elev 131.38 L=2082 Fp 14
Harvest Ave & Hollyhock St NE quad of inter section
E of 1st P.C. @ cor. of sidewalk to use M.H. 77, Harvest Ave

Cu. Exc.	
Yds. Emb.	
Sta.	
Project Engineer	Date
Design Engineer	Date
Approval Recommended By	Date

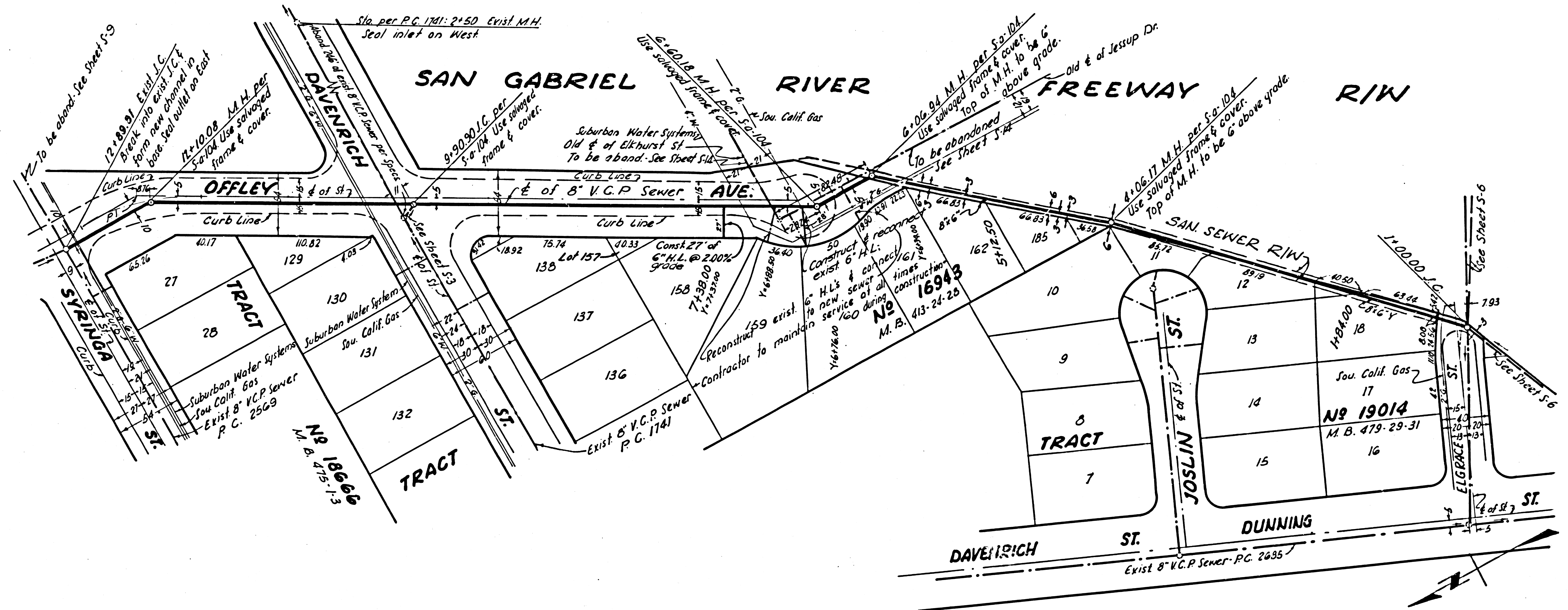
S.P. No.	STATE	FEDERAL PROJECT NO.	SHEET NO.	TOTAL SHEETS
7	CALIF.			

DIST.	COUNTY	ROUTE	SEC.	SHEET NO.	TOTAL SHEETS
VII	L.A.	170			

Approved _____ Dist. Eng. Dist. _____

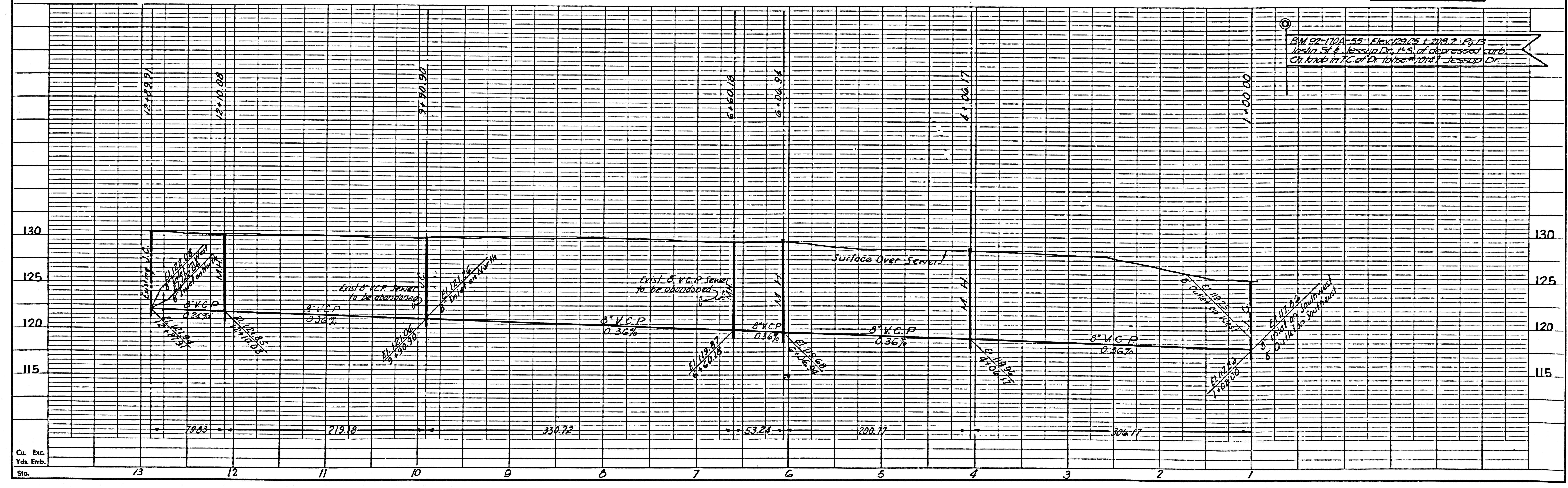
P.C. 6192
SHEET S-8 of 15 SHEETS

36184



Drawn	T. Hondo
DESIGNED	L. JAIME
CHECKED	R. UNG

BM 92-170A-55 Elev. 120.05 ± 209.2 ± 13
Joslin St. & Jessup Dr. 1' S. of depressed curb
On knob in N.C. of Dr. 10' S. of Jessup Dr.



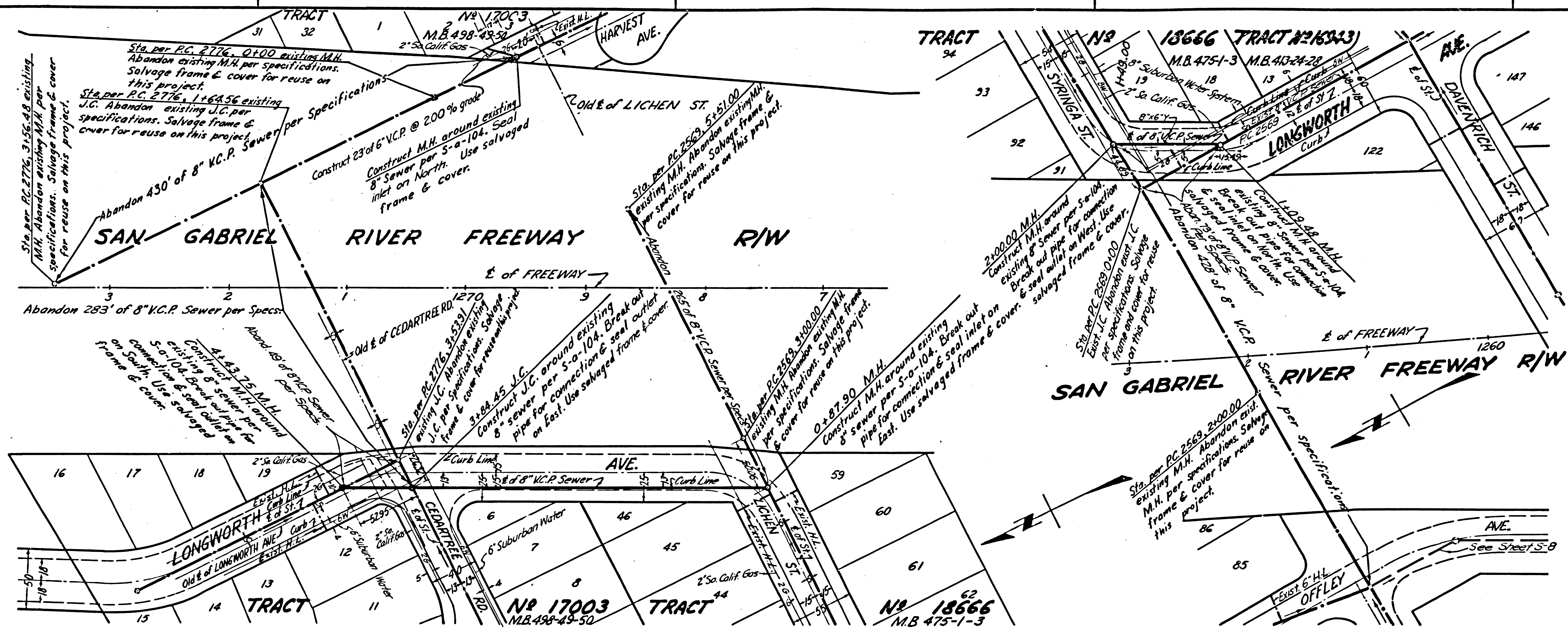
Cu. Exc.
Yds. Emb.
Sta.

Approved: _____
Dist. Eng. Dist.

PC.6192
SHEET 5-9 OF 15 SHEETS

36185

Designed L. Jaime
Checked R. Ung



Project Engineer	Date	Design Engineer	Date	Approval Recommended By	Date

B.M. 93-170A-55, E.L. 123.52, L. 228.2 P.M.
Elev. West St. & Mission Dr., 12/15/54, at E. edge of St.
Sta. by cap. See edge of sewer in the plan view.

B. P. R. DIV. NO.	STATE	FEDERAL PROJECT NO.	SHEET NO.	TOTAL SHEETS
7	CALIF.			

DIST.	COUNTY	ROUTE	SEC.	SHEET NO.	TOTAL SHEETS
VII	LA	170			

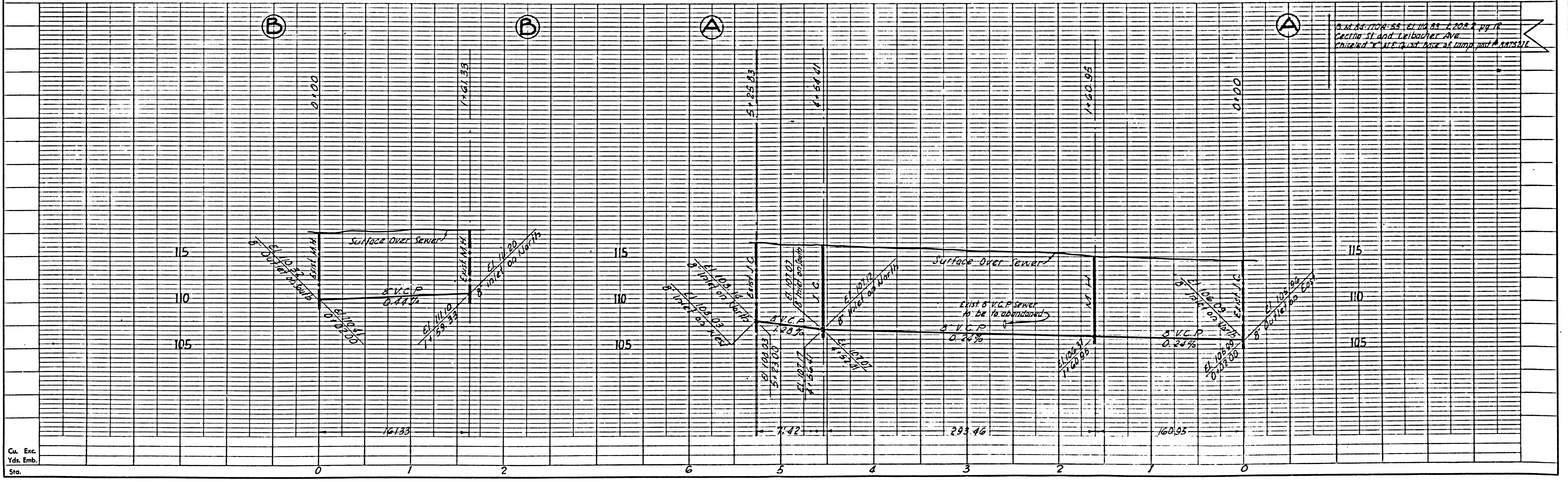
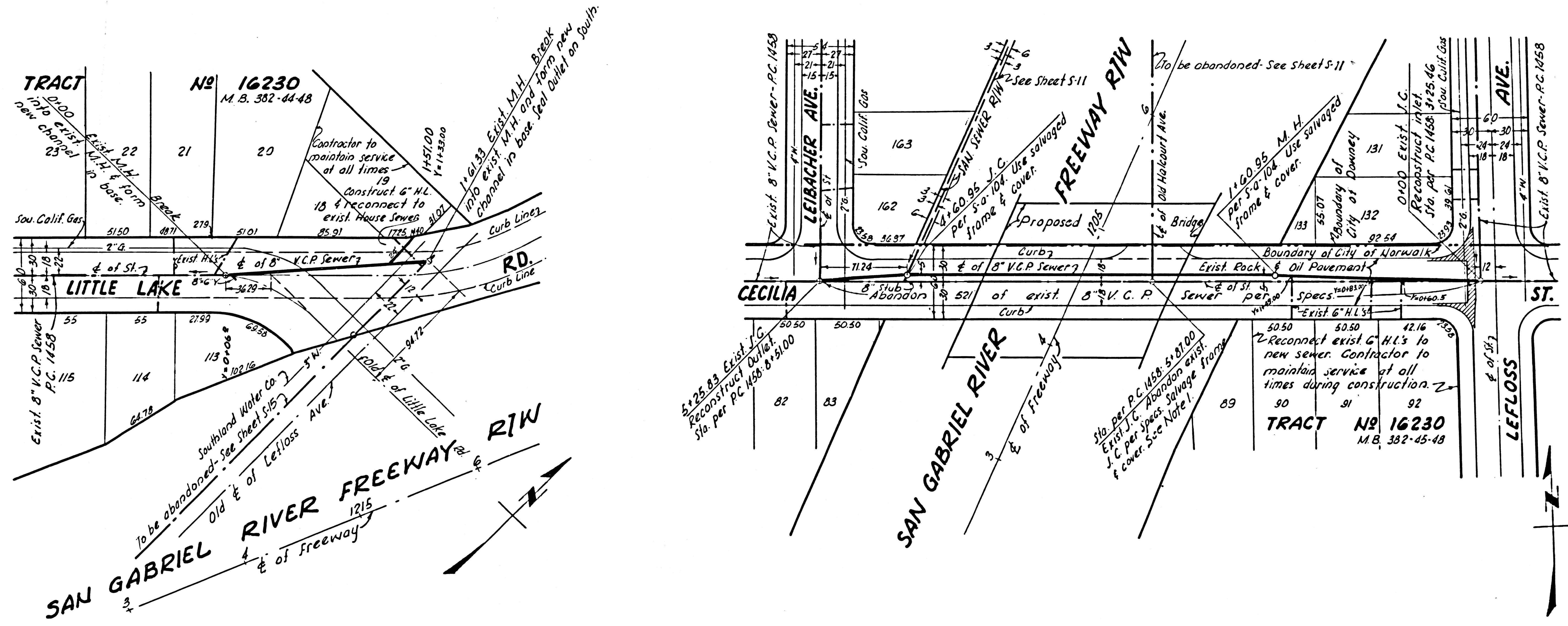
Approved _____ Dist. Eng. Dist. _____

P.C. 6192
SHEETS 10 OF 15 SHEETS

36186

NOTE
1. Contractor shall deliver salvaged M.H. Frame & cover to County Sewer Maintenance Yard 1129 E. 59th St. Los Angeles or 2849 S. Myrtle Ave. Irwindale.

DESIGNED	T HUNDA
CHECKED	R UNG



Cu. Exc.
Yds. Emb.
Sta.

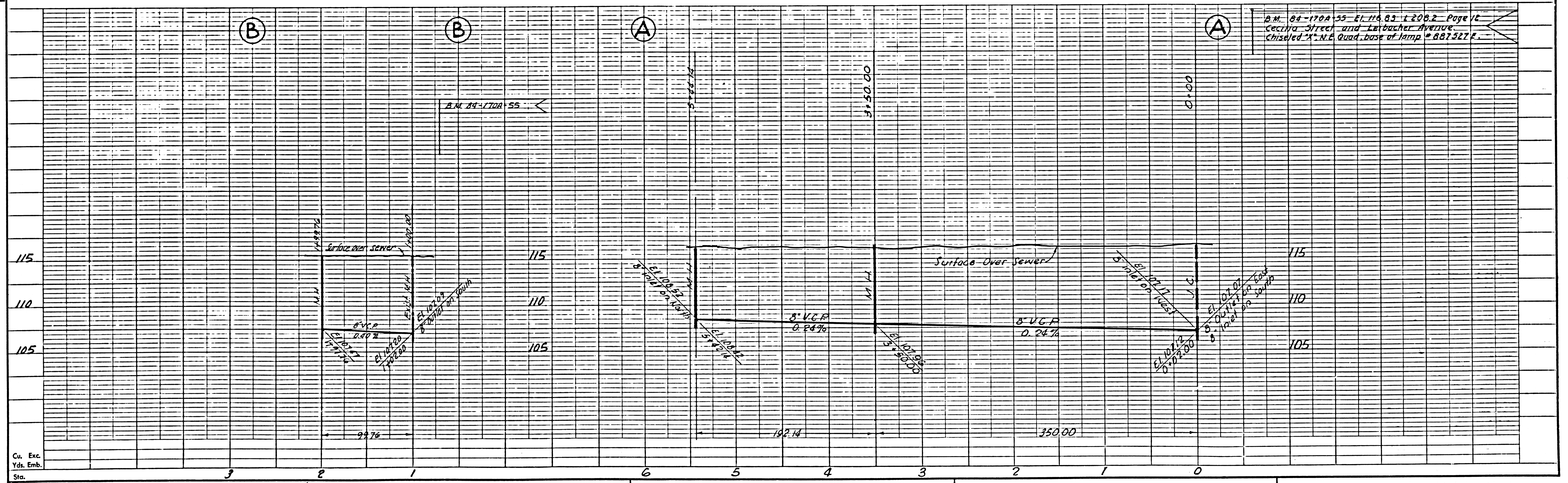
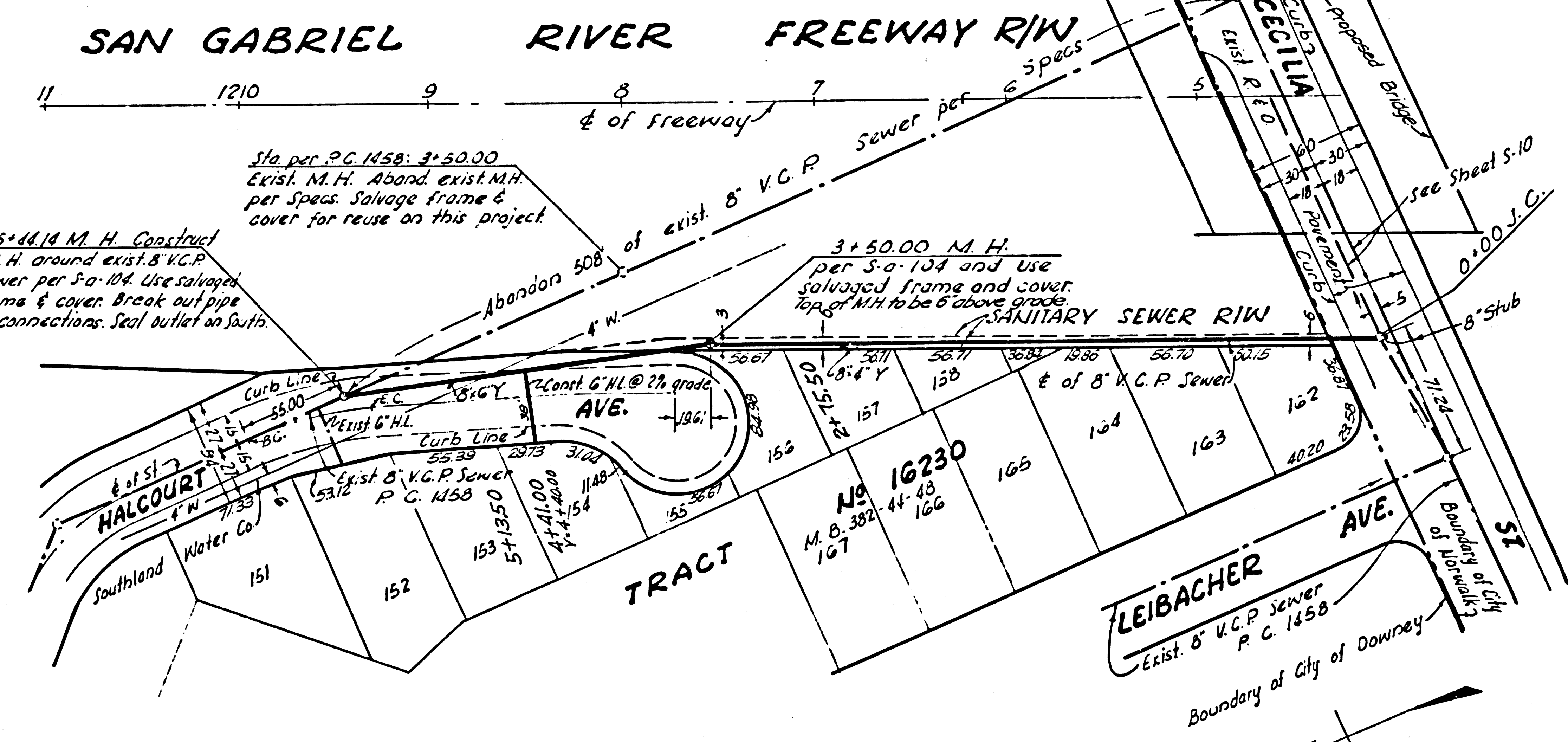
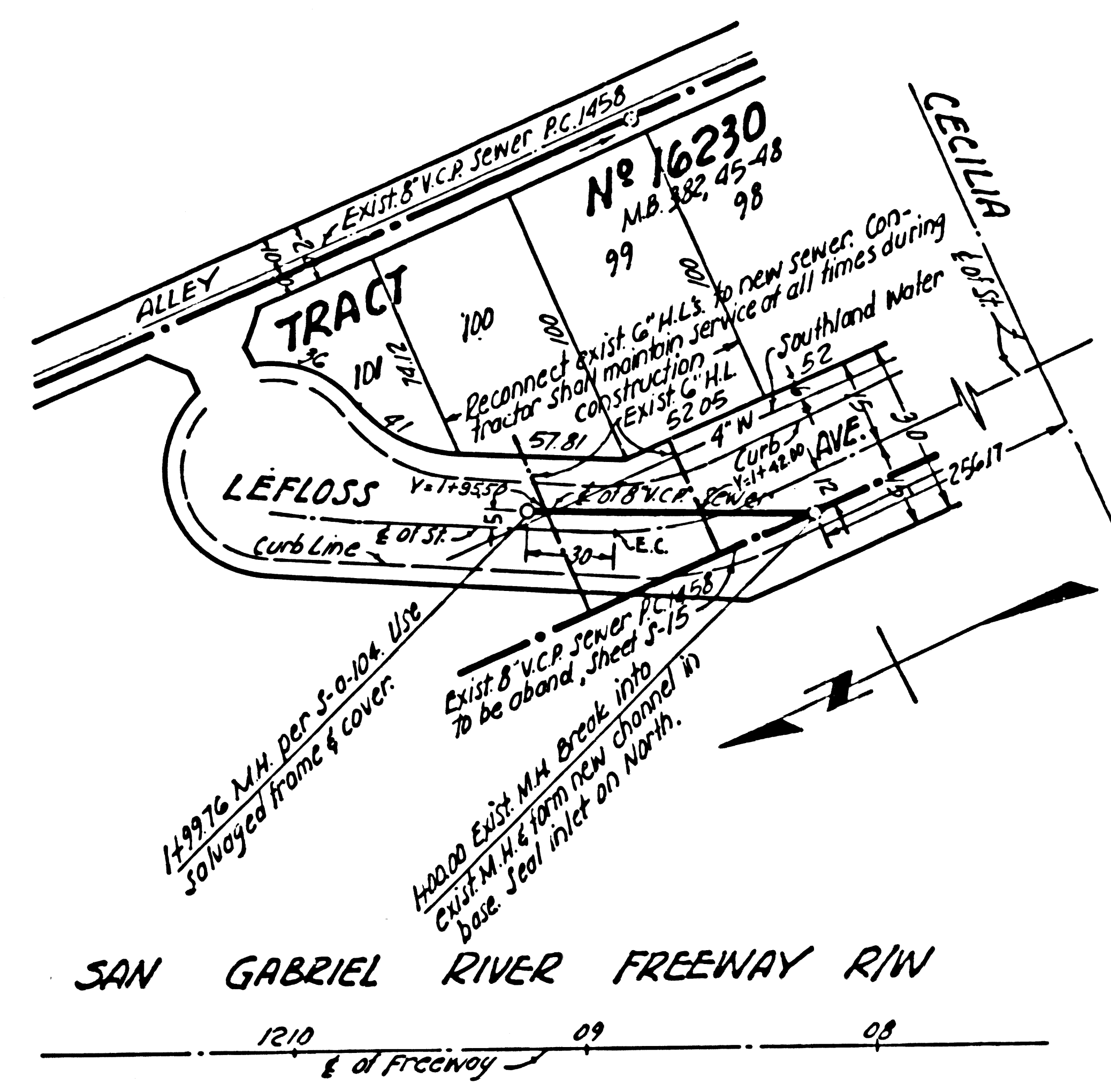
A.M. 84-1704-55 et al. 84-1704-2 by TP Cecilia St and Lebacher Ave. Enclosed "V" are to be used as lamp post standards.

Approved: _____ Dist. Eng. Dist. _____

P.C. 6192
SHEET 5-11 OF 15 SHEETS

36187

DESIGNED	T. HONDA
CHECKED	R. LING



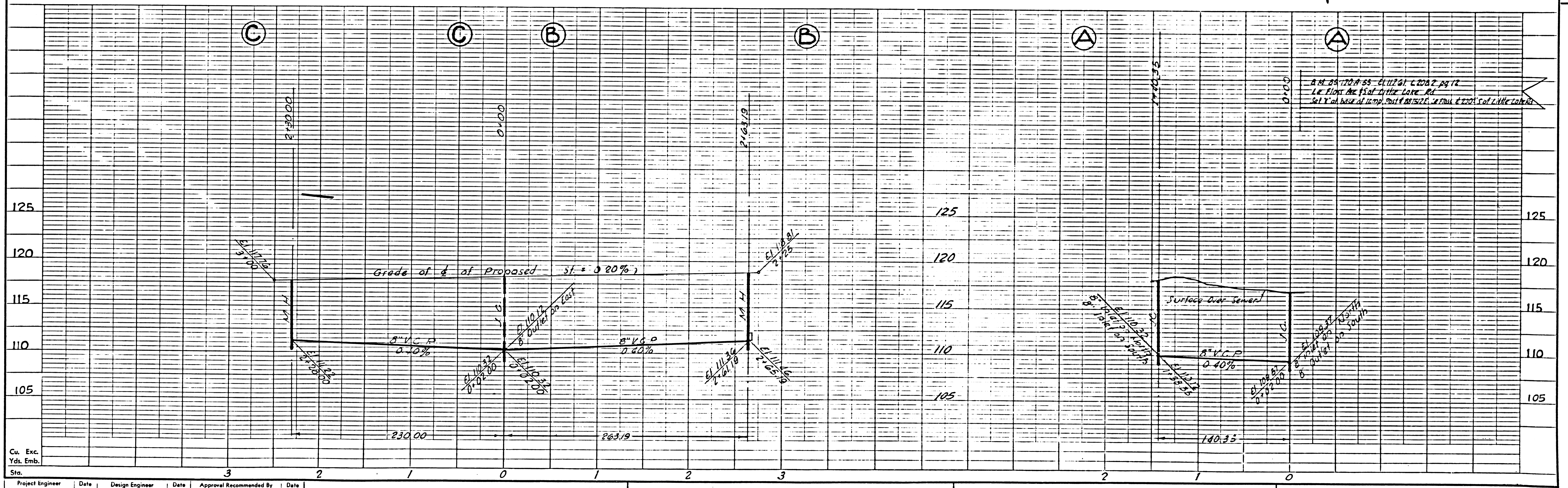
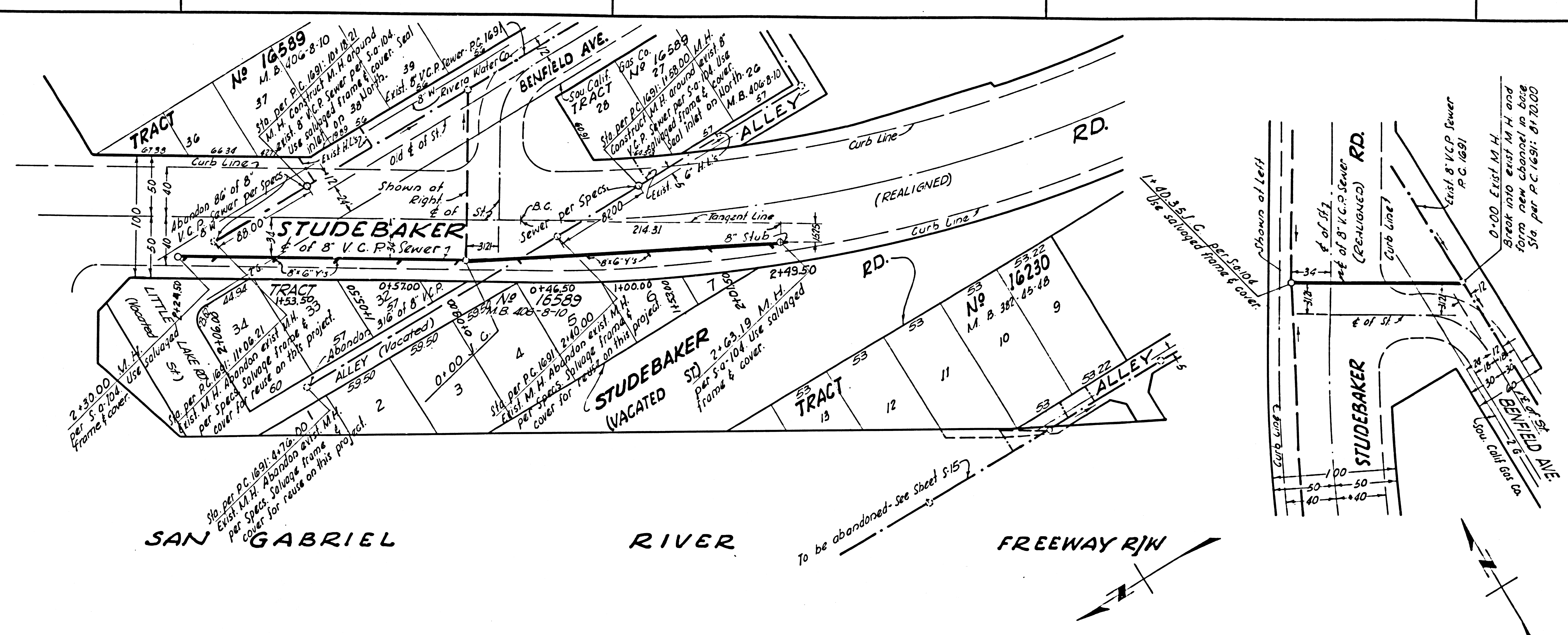
A.M. 84-170A-55-EL. 116.83 + 208.2 Page 12
Cecilia Street and Leibacher Avenue
Chiseled "X" N.E. Quad base of lamp # 827527 F.

Cu. Exc.					
Yds. Emb.					
Sta.					
Project Engineer	Date	Design Engineer	Date	Approval Recommended By	Date

Dist. Eng. Dist. _____
 Approved _____

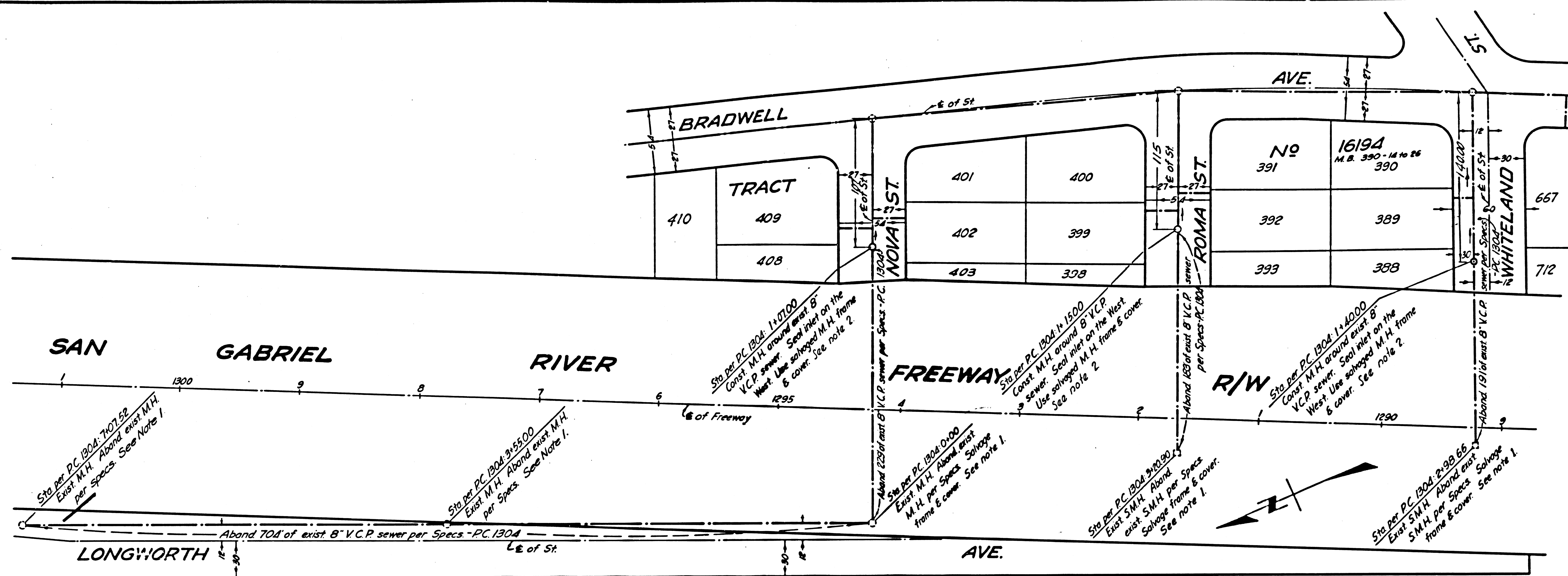
P.C. 6192
 SHEET 512 OF 15 SHEETS

36188



Project Engineer	Date	Design Engineer	Date	Approval Recommended By	Date
------------------	------	-----------------	------	-------------------------	------

V

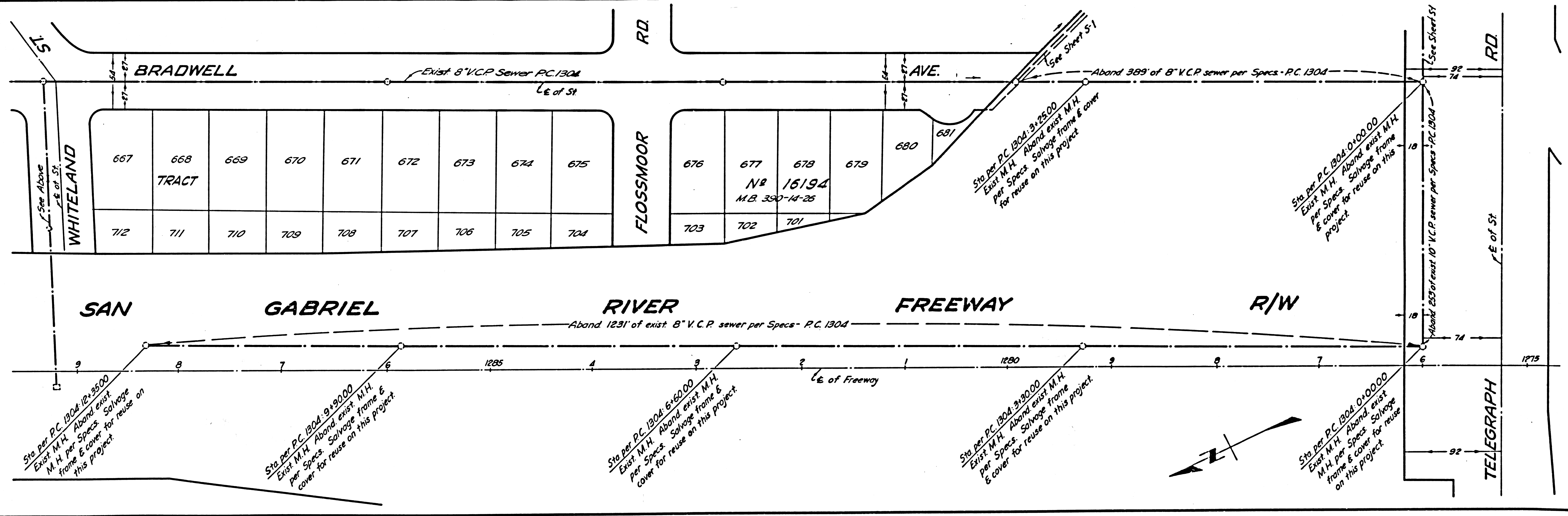


P.C. 6192
SHEET 5-13 OF 15 SHEETS

36189

Note:
1. Contractor shall deliver salvaged M.H. frame & cover to County Sewer Maintenance Yard, 1129 E. 55th St., Los Angeles or 2849 S. Myrtle Ave., Irwindale.
2. Construct M.H. per S-o-104.

Drawn: Kaga
Checked: Liza



S.P. No.	STATE	FEDERAL PROJECT NO.	FISCAL YEAR	SHEET NO.	TOTAL SHEETS
	CALIF.				

DIST.	COUNTY	ROUTE	SECTION	SHEET NO.	TOTAL SHEETS
VII	L.A.	170			

SAN

GABRIEL

RIVER

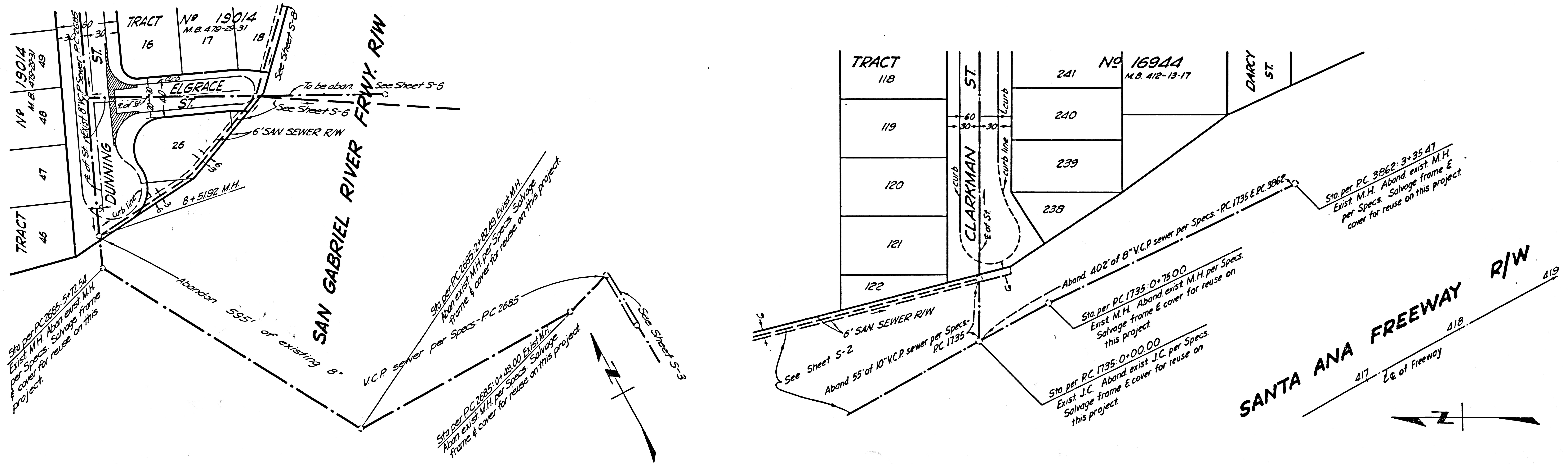
FREEWAY

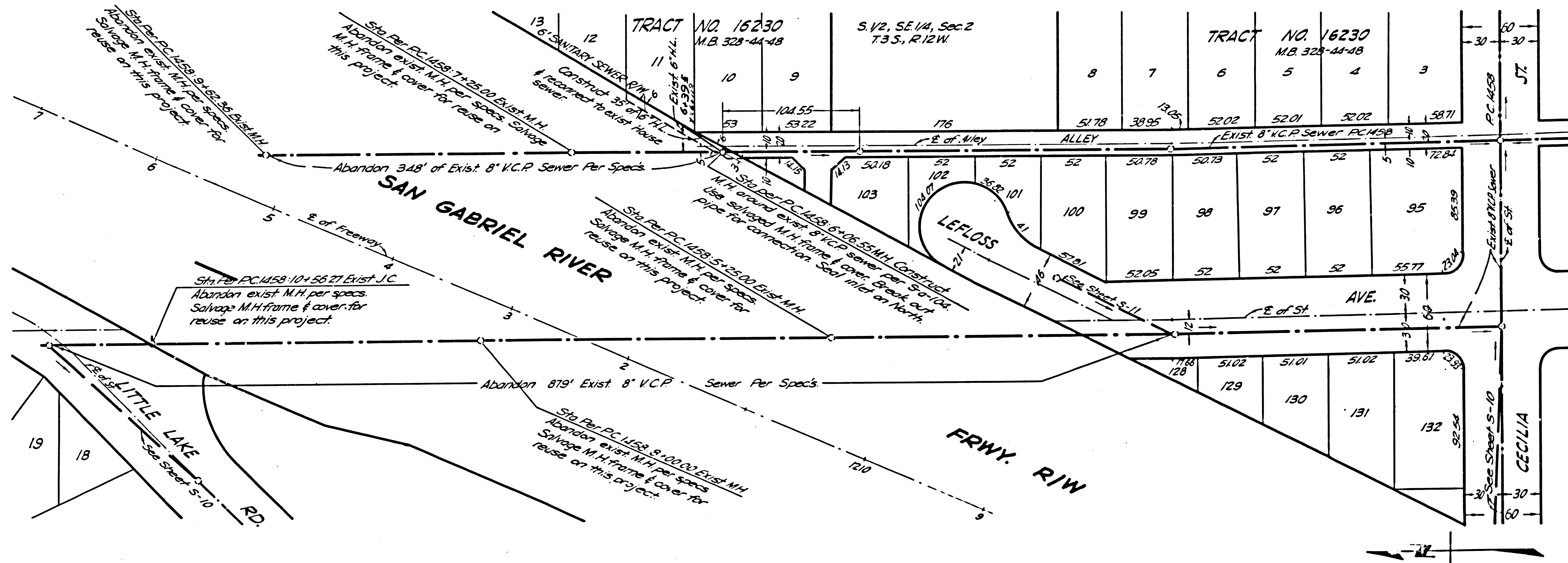
R/W

P.C. 6192
SHEET 5-14 OF 15 SHEETS

36190

Drawn	Kogo
Checked	Una





P.C. 6192
Sheet 5-15 of 15 Sheets

36191

Drawn	V. Jos
Checked	R. Urig

P.C. 6192