

**BENCH MARK:**  
 57' 44.02' Elev 1201.398' Los Angeles County  
 5th Survey Monument marked "B.M. 30-7"  
 1356 E.E. 5869" in 12" concrete post 4" above  
 ground at NE corner of Crest Road & Hawthorne  
 Boulevard 32.5' E'ly and 240' N'ly from center  
 of pavement and 55.3' East of P.P. N° 1036438E  
 under guy cable.

**NO CHARGE FOR CONNECTIONS**  
*A. Curtis 5-9-62*

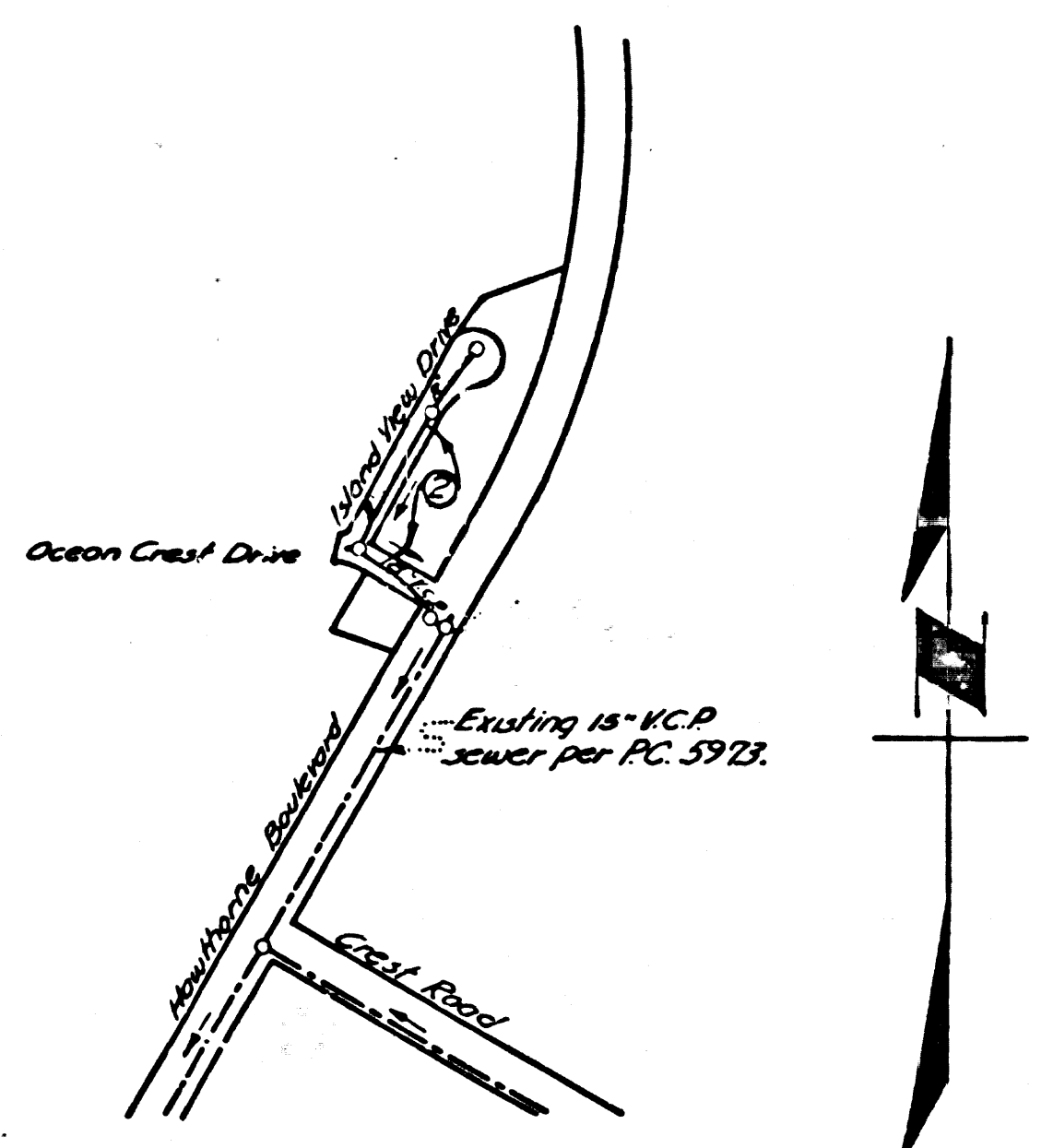
**PRIVATE ENGINEERS NOTICE TO CONTRACTORS**

The existence and location of any underground utility pipes or structures shown on these plans are obtained by a search of the available records. To the best of our knowledge there are no existing utility structures except as shown on this map.

The contractor is required to take precautionary measures to protect the utility lines shown and any other lines not of record or not shown on this drawing.

**LOMITA BLDG. DIST. NO. 12**

- NOTES:**
1. PROVIDE STAKES ON THE PROPERTY LINE OR PROPERTY LINES PRODUCED AT RIGHT ANGLES TO THE SEWER LINE AT THE CENTER LINE OF EACH MANHOLE.
  2. NO REPRESENTATIVE OF THE COUNTY ENGINEER WILL SURVEY OR LAY OUT ANY PORTION OF THE WORK.
  3. THE OWNER OR HIS AUTHORIZED REPRESENTATIVE SHALL FURNISH THE COUNTY ENGINEER WITH GRADE SHEETS AND STATIONING FOR ALL HOUSE LATERALS AND Y BRANCHES AND SHALL PROVIDE STAKES FOR THEM AT THEIR PROPER LOCATIONS WITH STATIONING PLAINLY MARKED. ANY CHANGE IN LOCATION SHALL BE REQUESTED IN WRITING BY THE OWNER OR HIS REPRESENTATIVE.
  4. THE PRIVATE ENGINEER SHALL FURNISH THE HOUSE LATERAL DEPTH AT THE PROPERTY LINE BELOW THE TOP OF CURB ELEVATION FOR EACH HOUSE LATERAL ON THE GRADE SHEET.
  5. NO REVISIONS SHALL BE MADE IN THESE PLANS WITHOUT THE APPROVAL OF THE COUNTY ENGINEER.
  6. USE STANDARD MANHOLE FRAMES AND COVERS, S-117.
  7. USE EXTRA STRENGTH PIPE. All pipe is standard depth. Except as noted.
  8. USE "WEDGE-LOCK" OR "SPEED-SEAL" FOR ALL Y.C.P. JOINTS PER SPECS, SECS. 34 & 48.
  9. RESURFACE ALL TRENCH WITHIN PAVED AREA TO MEET L.A. COUNTY ROAD DEPT. OR CALIF. STATE HIGHWAY REQUIREMENTS IN ACCORDANCE WITH PERMITS.
  10. ENCASE FOUR FEET OF SEWER AT POINTS OF INTERFERENCE WITH POLES, CASE III, S-172.
  11. HOUSE LATERALS TO BE CONSTRUCTED WITH INVERTS AT PROPERTY LINE 6" FEET BELOW CURB GRADE.
  12. ALL STRUCTURES SHALL BE BRICK SEWER STRUCTURES, S-104.
  13. FOR ALLOWABLE LEAKAGE USE FORMULA NO. 1, SPECS, SEC. 54.
  14. THE CONTRACTOR SHALL NOTIFY THE CONSTRUCTION DIVISION BY TELEPHONE, MADISON 9-1747, EXT. 4151 AT LEAST TWENTY-FOUR HOURS BEFORE STARTING ANY WORK UNDER THIS CONTRACT.
  15. SPECIFICATIONS DATED OCTOBER 23, 1961 APPLY IN THE CONSTRUCTION OF THIS PROJECT.



**INDEX MAP**  
 Scale: 1"=600'  
 Tract N° 27090  
 P.C. N° 6194

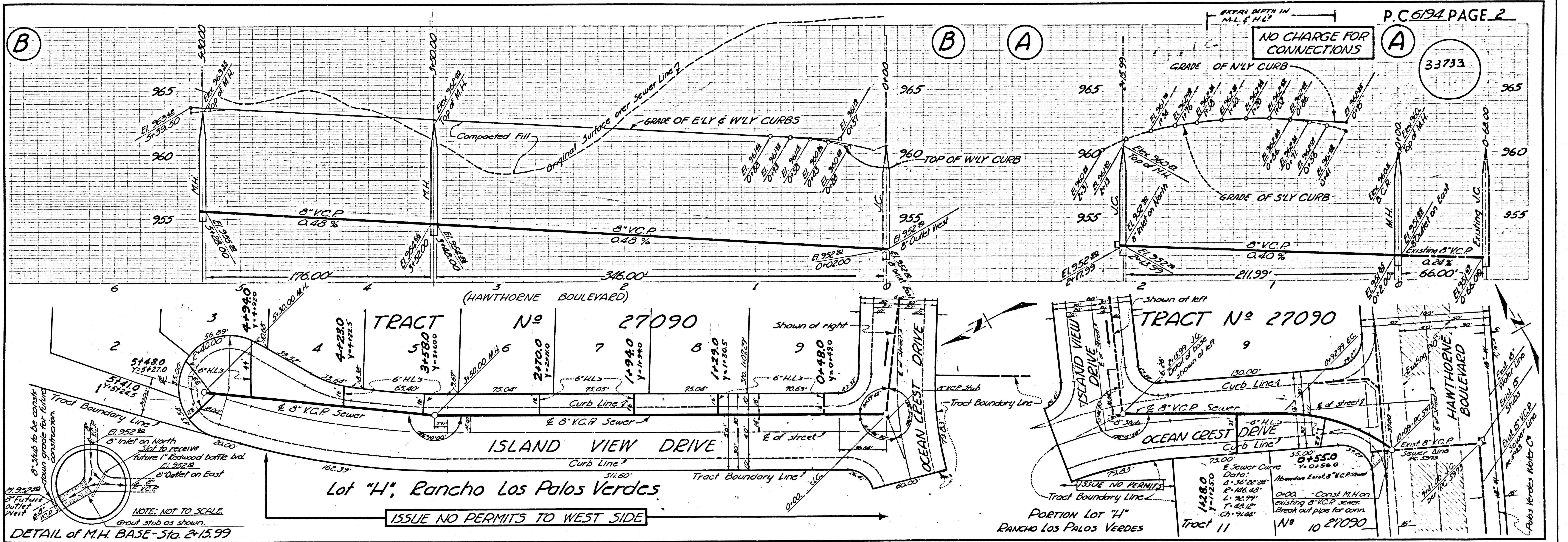
PROFILE ALIGNMENT AND GRADE OF **P.C. 6194**  
**SANITARY SEWERS** PAGE 1  
 TO BE CONSTRUCTED IN **JAN 0358 04**  
**TRACT N° 27090**

**PRIVATE CONTRACT NO. 6194**  
 W.S. 27  
 1 SHEET 2 PAGES  
 SCALE: VERT. 1"=4' FEBRUARY, 1962  
 HORIZ. 1"=40'  
 PREPARED IN THE OFFICES OF  
**SOUTH BAY ENGINEERING CORP.**  
*Raymond S. Douglas*  
 REG. C. E. NO. 2791  
 FOR LEGEND SEE PLAN NO. S.A-64

**NOTE:**  
 GRADES TO WHICH THIS IMPROVEMENT IS TO BE CONSTRUCTED ARE SHOWN ON PLANS AND PROFILES. GRADE POINTS FOR TOP OF CURBS, CENTER LINE OF STREETS OR CENTER LINE OF ALLEYS ARE SHOWN BY CIRCLES ON PROFILES. AT ALL POINTS BETWEEN DESIGNATED POINTS THE GRADE SHALL BE ESTABLISHED SO AS TO CONFORM TO A STRAIGHT LINE DRAWN BETWEEN SAID DESIGNATED POINTS.  
 ELEVATIONS ARE IN FEET ABOVE U.S.C. & G.S. SEA LEVEL DATUM OF 1929.  
 THIS DRAWING AND THE DATA HEREON ARE HEREBY MADE A PART OF THE SPECIFICATIONS.  
 WORK SHALL BE CONSTRUCTED ACCORDING TO SPECIFICATIONS ON FILE IN THE OFFICE OF THE COUNTY ENGINEER AND SHALL BE PROSECUTED ONLY IN THE PRESENCE OF THE COUNTY ENGINEER.  
 BEFORE WORK CAN BE STARTED, THE CONTRACTOR MUST OBTAIN A PERMIT TO EXCAVATE IN COUNTY STREETS FROM THE L.A. COUNTY ROAD DEPT., DISTRICT OFFICE NO. 11, AND PAY A FEE TO THE COUNTY ENGINEER ROOM 310, 108 WEST 2nd STREET, L.A. SUFFICIENT TO COVER THE COST OF CONSTRUCTION INSPECTION AND RECORD PLANS.  
 APPROVAL OF THIS PLAN BY THE COUNTY OF LOS ANGELES DOES NOT CONSTITUTE A REPRESENTATION AS TO THE ACCURACY OF THE LOCATION OF OR THE EXISTENCE OR NON-EXISTENCE OF ANY UNDERGROUND UTILITY PIPE, OR STRUCTURE WITHIN THE LIMITS OF THIS PROJECT. THIS NOTE APPLIES TO ALL PAGES.  
 IF WORK IS TO BE DONE IN A STATE HIGHWAY, A PERMIT MUST BE OBTAINED FROM THE STATE OF CALIFORNIA, DIVISION OF HIGHWAYS, 120 SOUTH SPRING STREET.

**COUNTY OF LOS ANGELES, CALIFORNIA**  
 Approved: John A. Lambie, County Engineer. Approved: J.D. Parkhurst, Ch. Engineer  
 CD. SAN. DIST. NO. 12  
 BY: *Richard E. Kelly* Asst. Sanitation Engineer. BY: *W. J. Postma* Office Engineer  
 CHECKED BY: *Shirley D. Dwyer* 5-14-62  
 Office of County Engineer R.C.E. N° 9416  
 Submitted: *Jack C. Lawrence*  
 Palms Verdes-Centinel Valley Regional Engineer

NO CONNECTIONS FOR THE DISPOSAL OF INDUSTRIAL WASTES SHALL BE MADE TO SEWERS SHOWN ON THESE DRAWINGS WITHOUT WRITTEN PERMISSION FROM THE CHIEF ENGINEER AND GENERAL MANAGER OF THE COUNTY SANITATION DISTRICTS.



**DETAIL of M.H. BASE-5** Sta. 2+15.99  
 NOTE: NOT TO SCALE  
 Show grub as shown.

**Lot "H", Rancho Los Palos Verdes**  
**ISSUE NO PERMITS TO WEST SIDE**

**P.C. 6194 PAGE 2**  
**NO CHARGE FOR CONNECTIONS**  
 33733

Portion Lot "H" RANCHO LOS PALOS VERDES  
 Tract 11 N° 10 27090