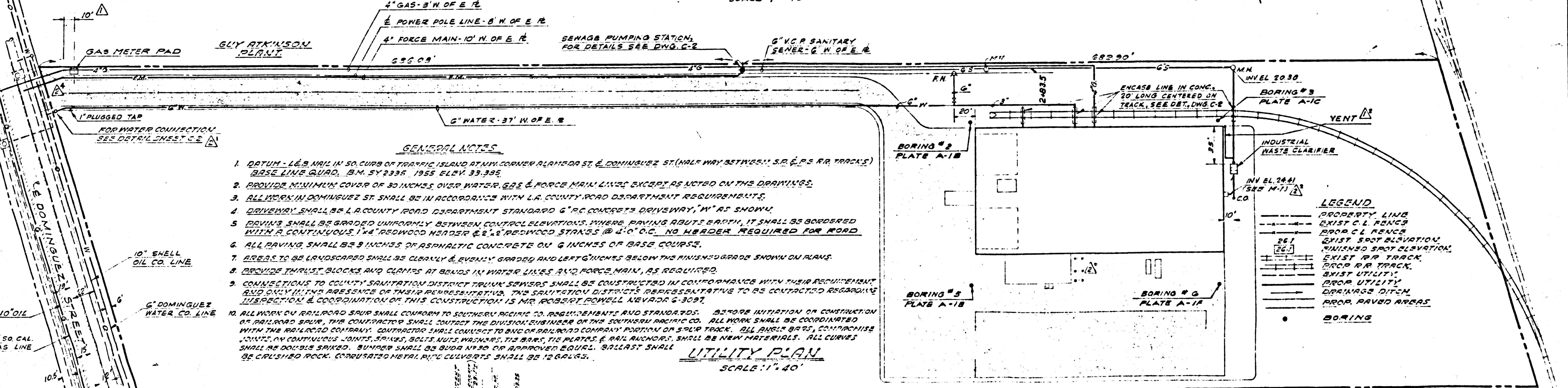


GRADING & PAVING PLAN  
SCALE: 1" = 40'



- GENERAL NOTES**
- DATUM - 1/4" NAIL IN 50 CURBS OF TRAFFIC ISLAND AT NW CORNER PLANTER ST. & DOMINGUEZ ST. (HALF WAY BETWEEN S.D. & P.S. R.R. TRACKS) BENCHMARK QUAD. B.M. SY 2335 1955 ELEV. 33.995
  - PROVIDE MINIMUM COVER OF 30 INCHES OVER WATER, GAS & FORCE MAIN LINES EXCEPT AS NOTED ON THE DRAWINGS.
  - ALL WORK IN DOMINGUEZ ST. SHALL BE IN ACCORDANCE WITH L.A. COUNTY ROAD DEPARTMENT REQUIREMENTS.
  - DRIVEWAY SHALL BE L.A. COUNTY ROAD DEPARTMENT STANDARD 6" RC CONCRETE DRIVEWAY, "W" AS SHOWN.
  - DRIVINGS SHALL BE GRADED UNIFORMLY BETWEEN CONTROL ELEVATIONS. WHERE PAVING ABUTS BATHY, IT SHALL BE BORDERED WITH A CONTINUOUS 1" x 4" REDWOOD HEADER & 2" x 4" REDWOOD STRAKS @ 4' O.C. NO HEADER REQUIRED FOR BORD.
  - ALL PAVING SHALL BE 3 INCHES OF ASPHALTIC CONCRETE ON 6 INCHES OF BASE COURSE.
  - AREAS TO BE LANDSCAPED SHALL BE CLEARLY & EVENLY GRADED AND LEFT 6 INCHES BELOW THE FINISHED GRADE SHOWN ON PLANS.
  - PROVIDE THURST BLOCKS AND CLAMPS AT BEINGS IN WATER LINES AND FORCE MAIN, AS REQUIRED.
  - CONNECTIONS TO COUNTY SANITATION DISTRICT TRUNK SEWERS SHALL BE CONSTRUCTED IN CONFORMANCE WITH THEIR REQUIREMENTS AND ONLY IN THE PRESENCE OF THEIR REPRESENTATIVE. THE SANITATION DISTRICT'S REPRESENTATIVE TO BE CONTACTED REGARDING INSPECTION & COORDINATION OF THIS CONSTRUCTION IS MR. ROBERT POWELL NEVADA 4-3097.
  - ALL WORK ON RAILROAD SWAP SHALL CONFORM TO SOUTHERN PACIFIC CO. REQUIREMENTS AND STANDARDS. BEFORE INITIATION OF CONSTRUCTION ON RAILROAD SWAP, THE CONTRACTOR SHALL CONTACT THE DISTRICT ENGINEER OF THE SOUTHERN PACIFIC CO. ALL WORK SHALL BE COORDINATED WITH THE RAILROAD COMPANY. CONTRACTOR SHALL CONTACT TO S.D. OR P.S. COMPANY POSITIVE OF SWAP TRACK. ALL BURL BRGS, CONTINUOUS JOINTS, AN CONTINUOUS JOINTS, SPINDS, BELLS, NUTS, WASHERS, THE BARS, THE PLATES & RAIL ANCHORS, SHALL BE NEW MATERIALS. ALL CURVES SHALL BE DOUBLE SPIND. BUNNERS SHALL BE SUDA NY 30 OR APPROVED EQUAL. BALLAST SHALL BE CRUSHED ROCK. CORROSATED METAL PIPE COULVERTS SHALL BE 12 GAL. 30"

**LEGEND**

- PROPERTY LINE
- EXIST. C.L. FENCE
- PROP. C.L. FENCE
- EXIST. SPOOT ELEVATION
- EXIST. SPOOT ELEVATION
- EXIST. RR TRACK
- PROP. RR TRACK
- EXIST. UTILITY
- PROP. UTILITY
- DRIVAGE DITCH
- PROP. PAVED AREAS
- BORING

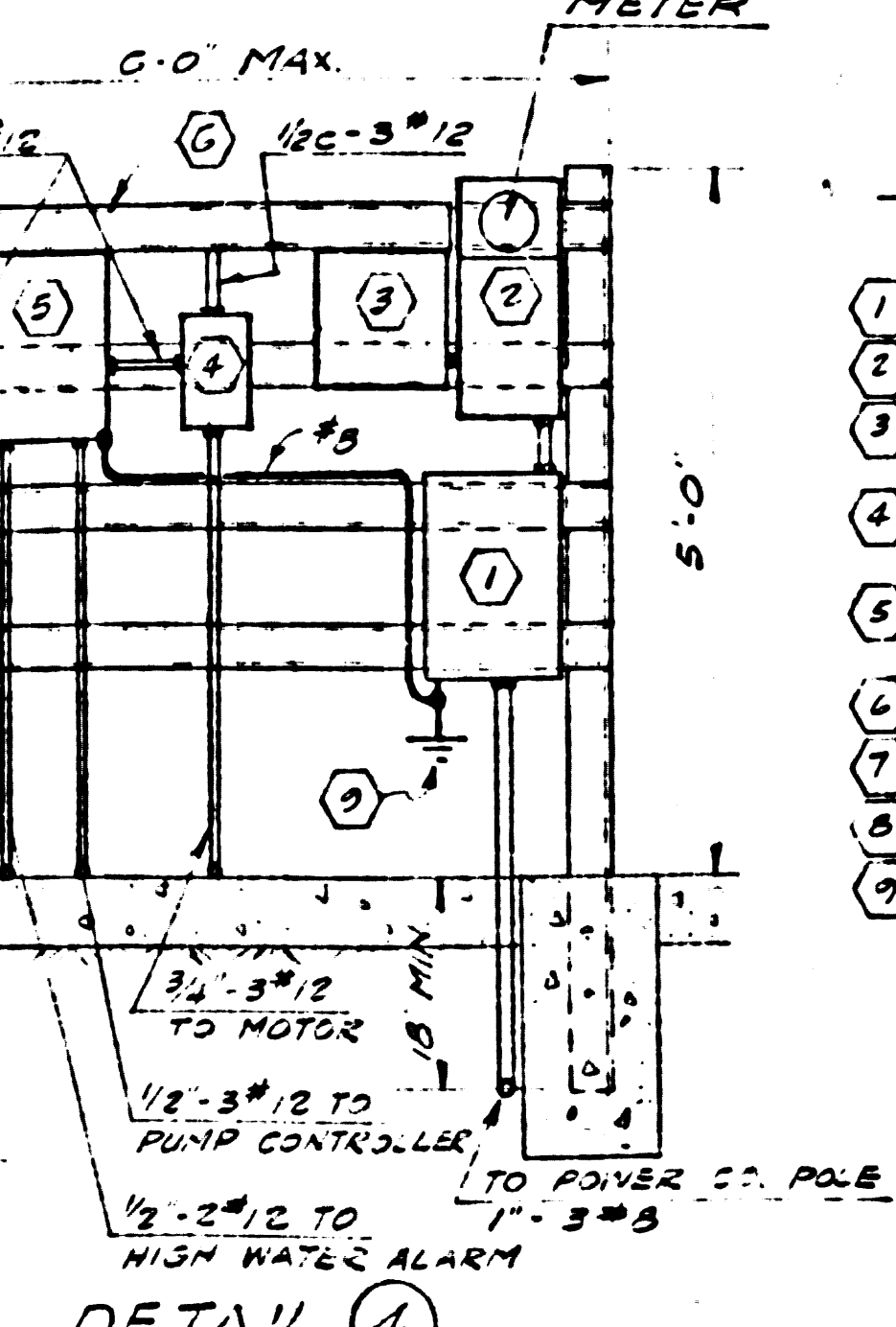
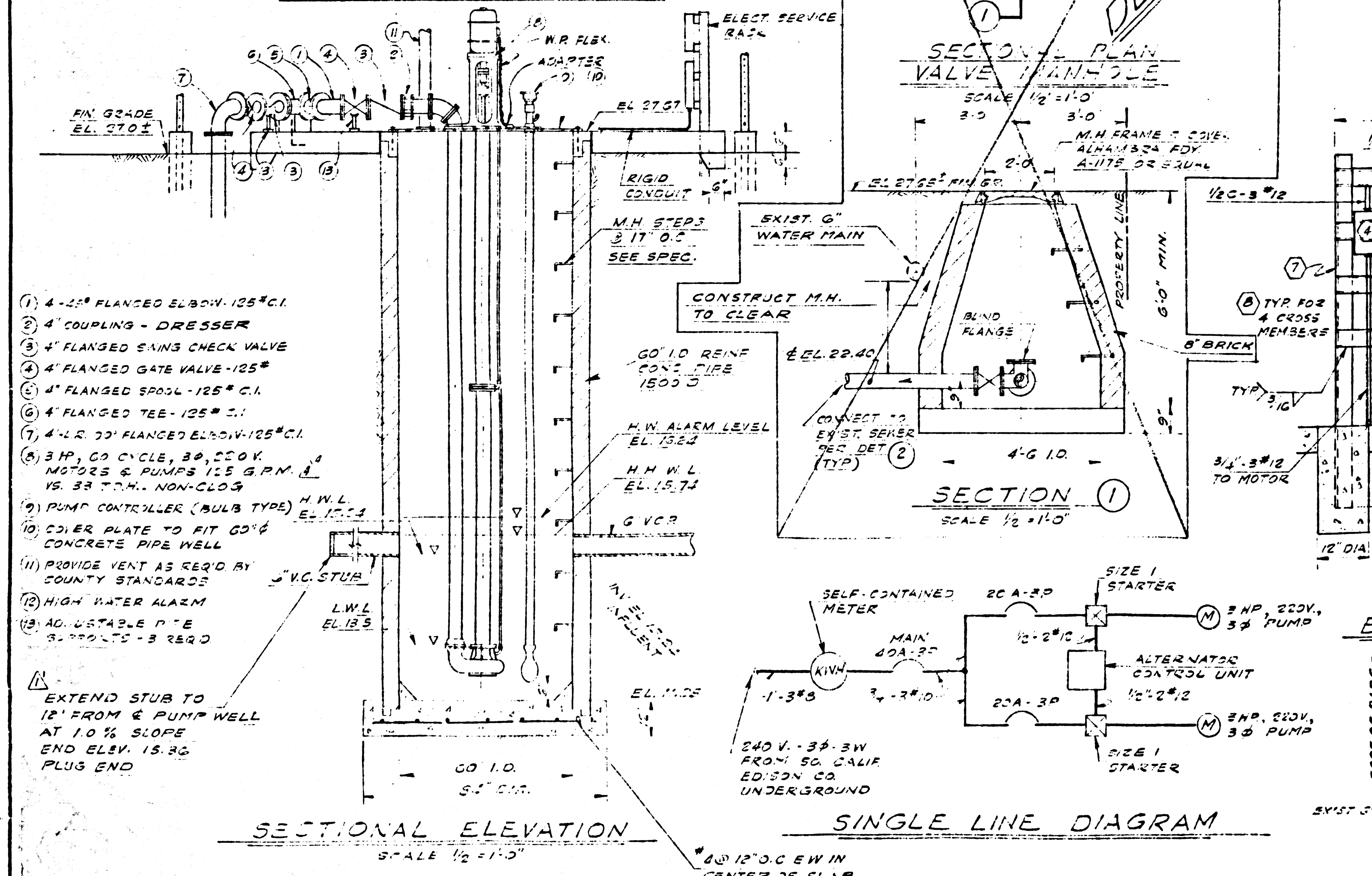
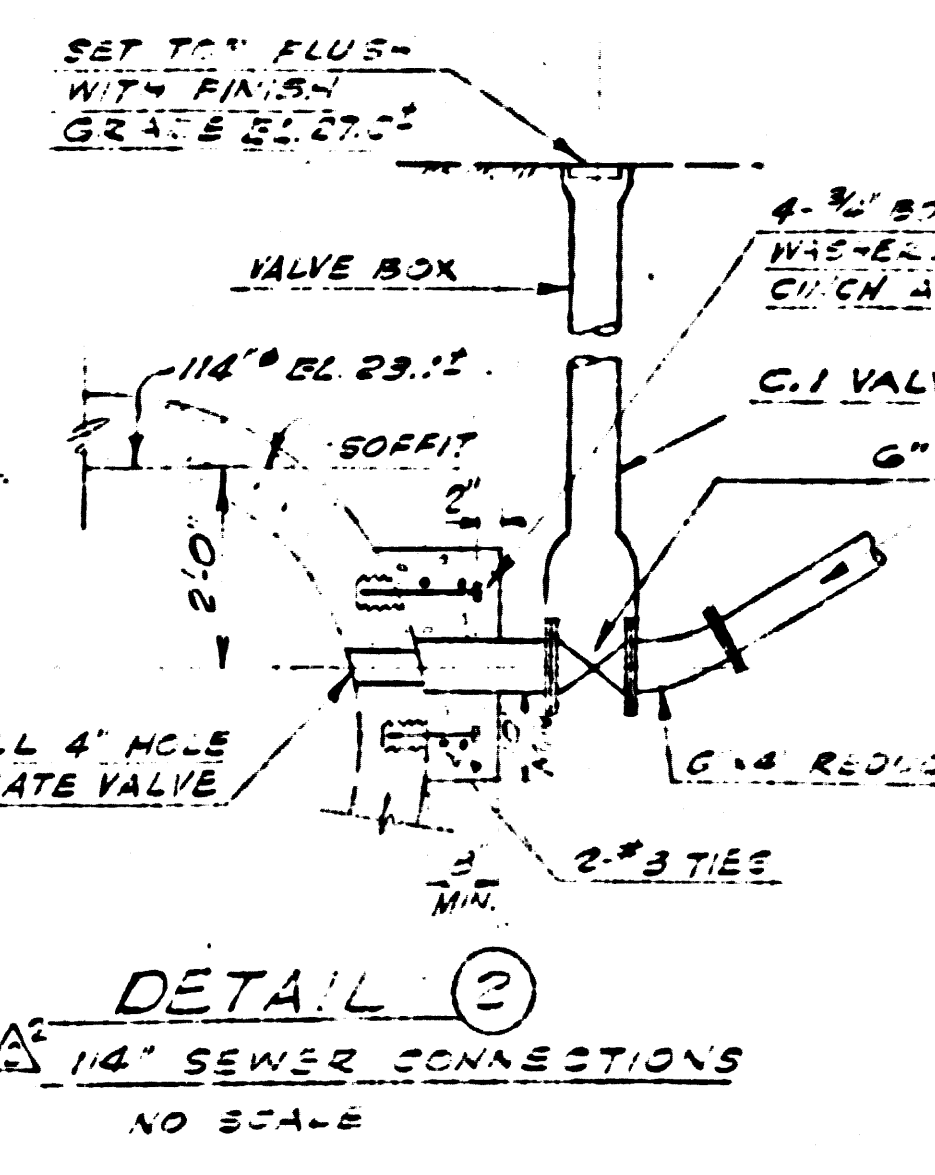
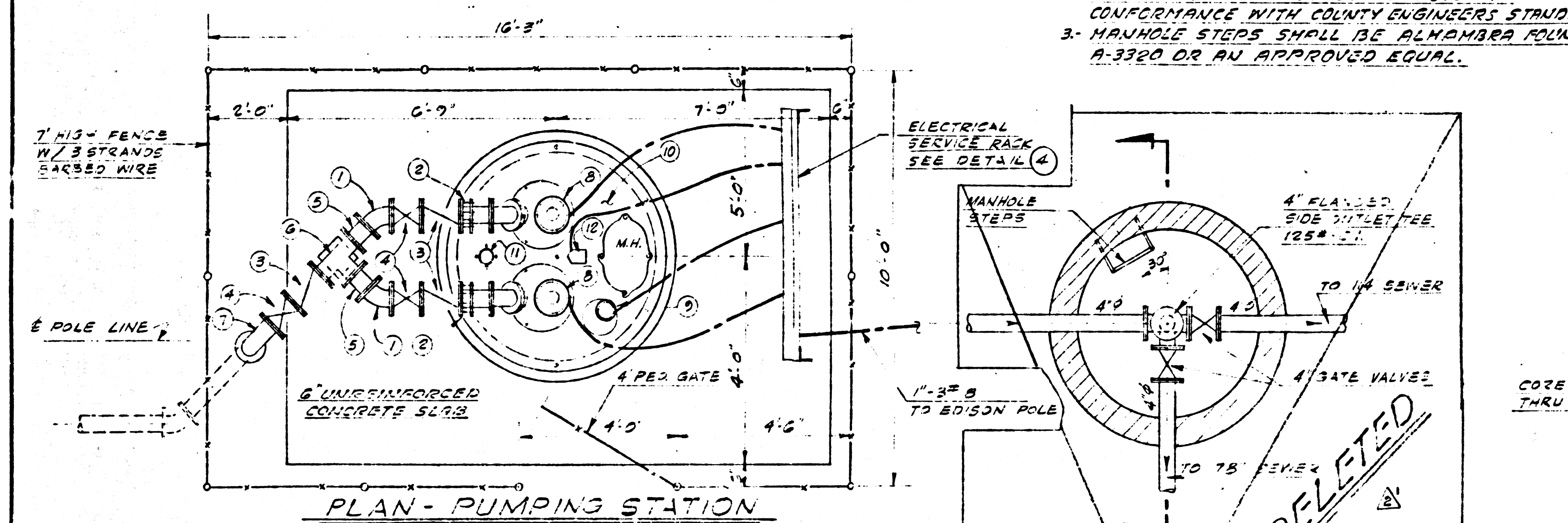
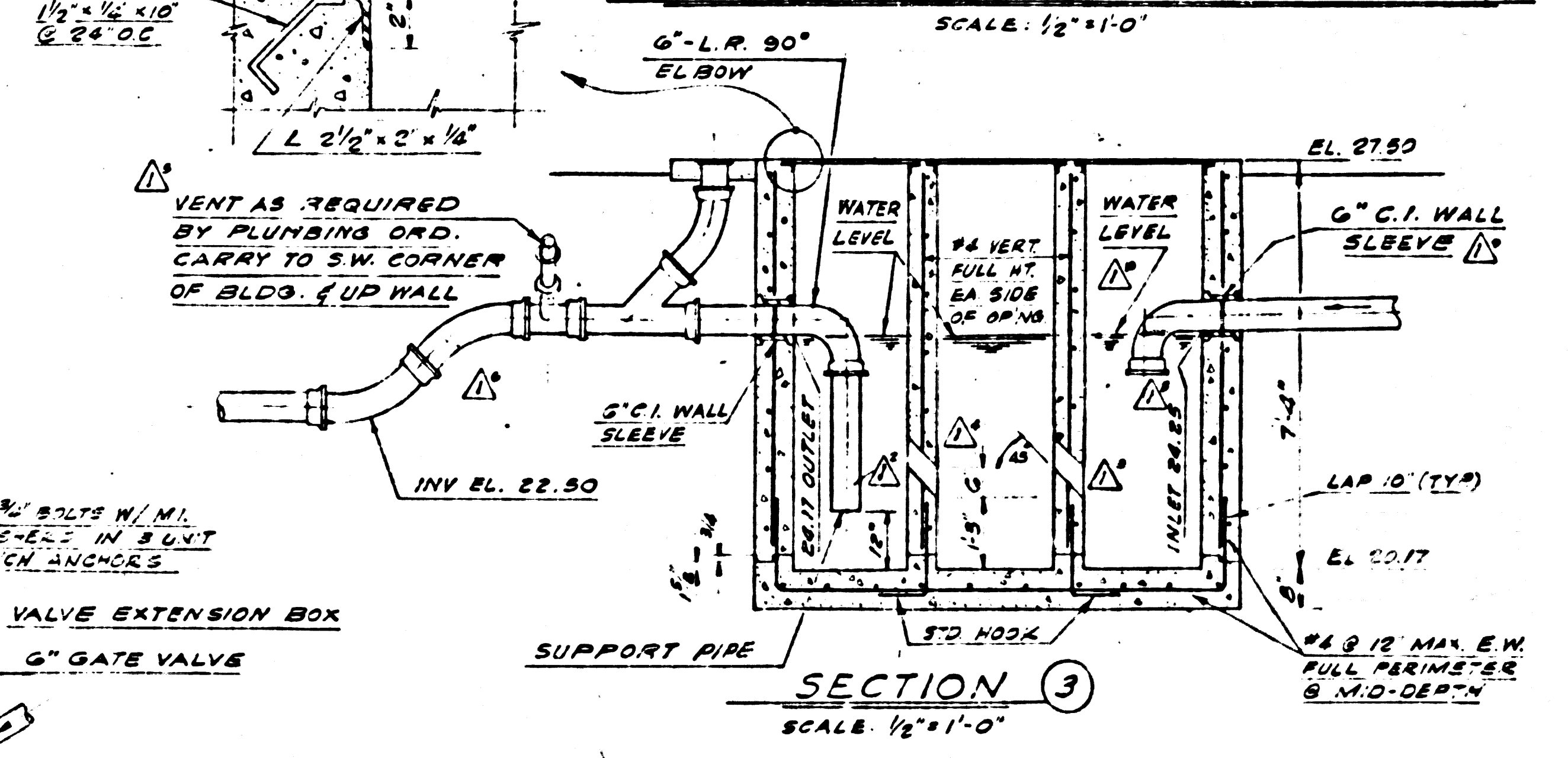
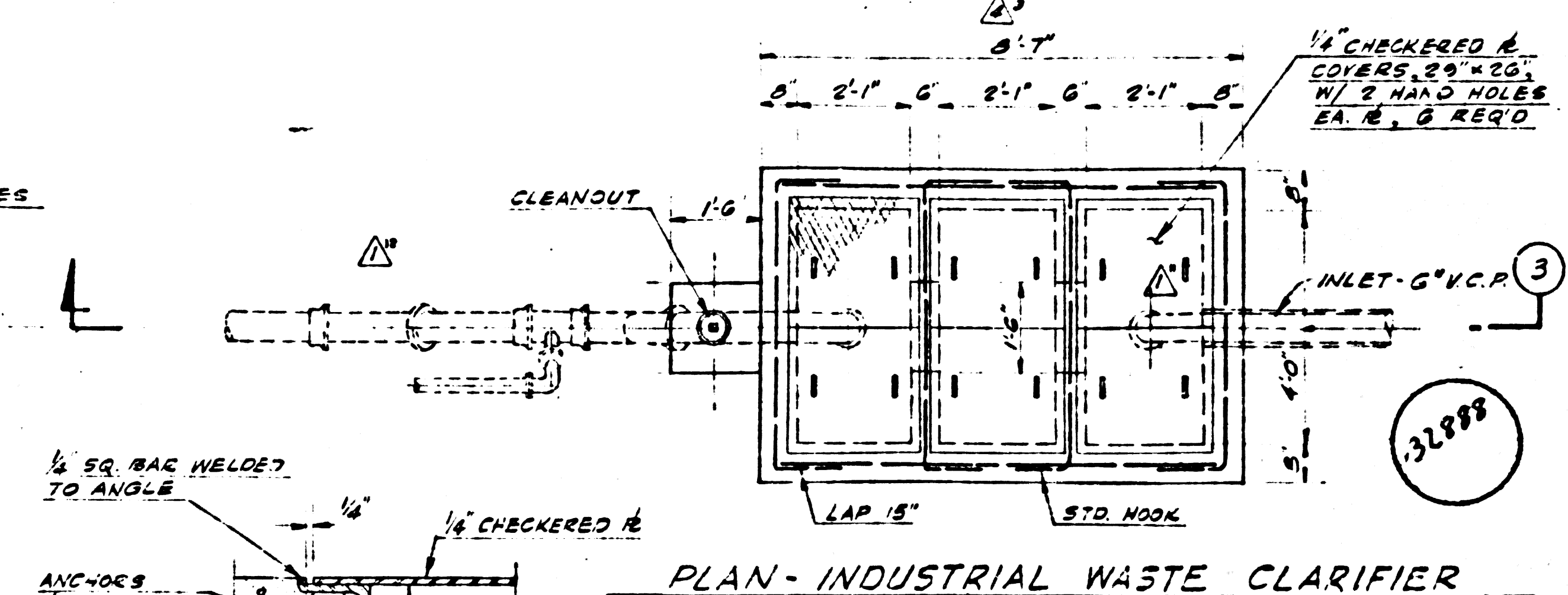
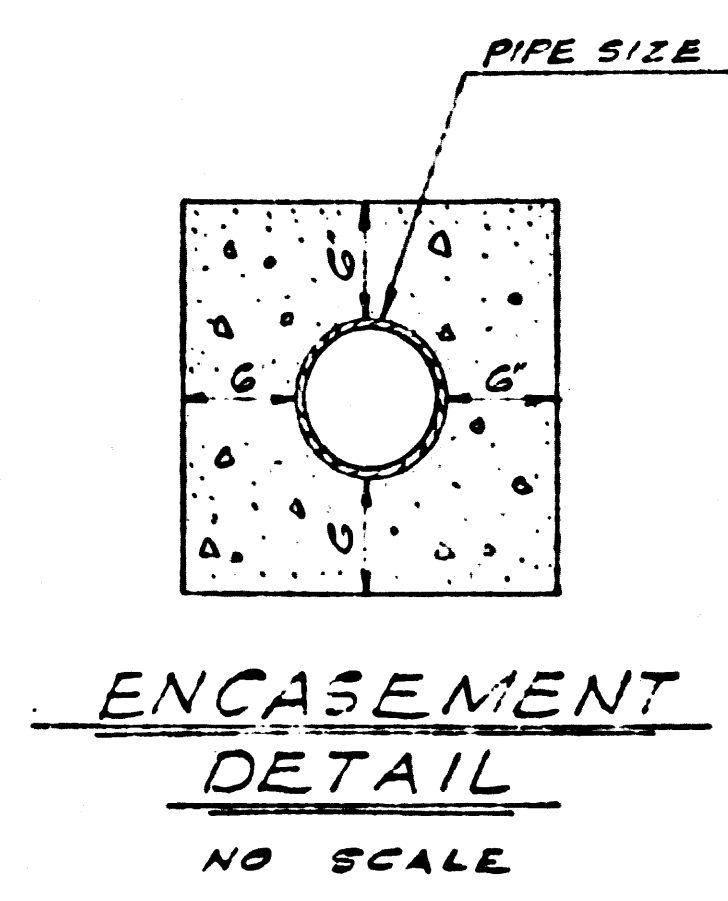
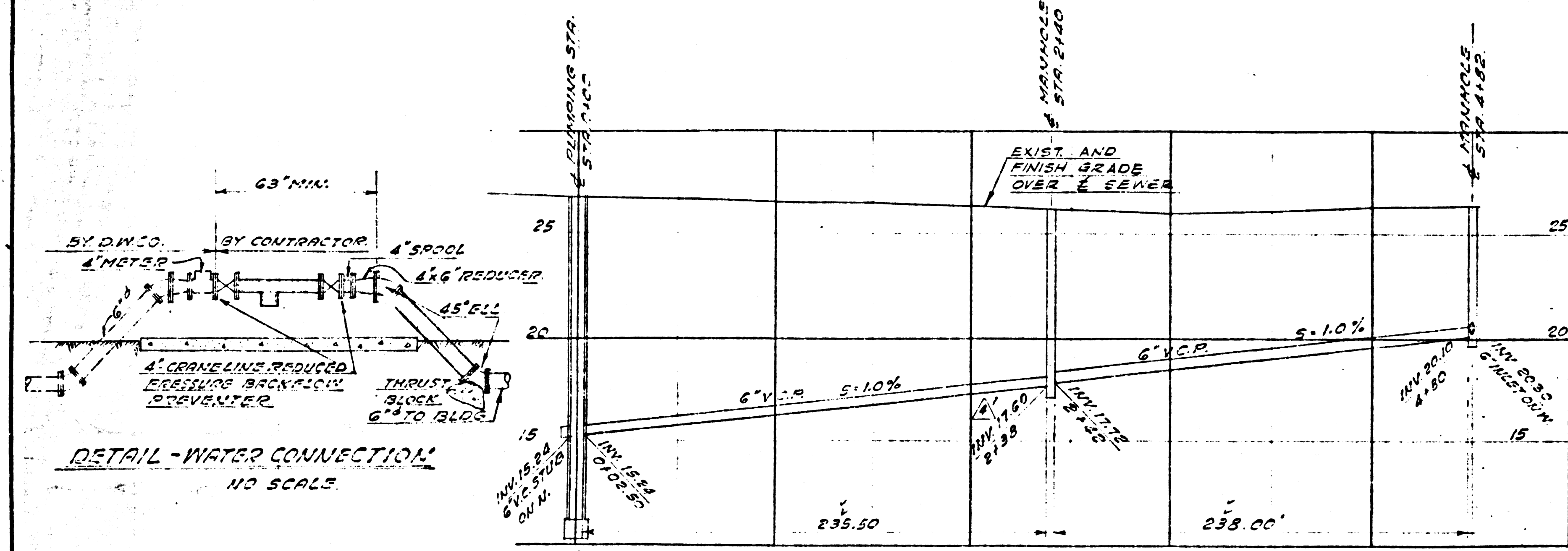
REV	NO.	DESCRIPTION
1	1	ADDITION OF VENT LINE
2	2	DIMENSION OF GAS METER PAD

**Q.E.**  
**QUINTON ENGINEERS, LTD.**  
 PLANNING • ENGINEERING • ARCHITECTURE

GALVANIZING PLANT FOR  
**JOSLYN PACIFIC CO.**  
 2226 E. DOMINGUEZ STREET, LONG BEACH

**GRADING, PAVING AND  
 UTILITY PLANS**

DATE	BY	CHECKED	DATE
7.8.58	M. WOLIN	M. WOLIN	7.15.58
DATE	BY	CHECKED	DATE
7.8.58	M. WOLIN	M. WOLIN	7.15.58



**APPROVED**

By *[Signature]* Industrial Waste Division Date

NO CONNECTIONS FOR THE DISPOSAL OF INDUSTRIAL WASTE SHALL BE MADE TO SEWERS SHOWN ON THESE DRAWINGS WITHOUT WRITTEN PERMISSION FROM THE CHIEF ENGINEER AND GENERAL MANAGER OF THE COUNTY SANITATION DISTRICTS.

- ELECTRICAL EQUIPMENT LIST**  
(ALL EQUIPMENT RAIN-TIGHT TYPE)
- PULL BOX 6" x 12" x 6"
  - 100 AMPERE SAFETY SOCKET BOX
  - MAIN BREAKER, 2 BRANCH BREAKERS, AND 2-1/2" x 1-1/2" SPACES
  - MAGNETIC STARTER, 230V-57 SIZE 1
  - CONTROL UNIT, CHICAGO PUMP CO. TYPE Y-60, OR APPROVED EQUAL
  - RAIN-TIGHT GUTTER, 4" x 4" x 6" ANGLE - 2" x 1/2"
  - CHANNEL 4" x 4" x 1/2"
  - 1/2" x 1/2" TO 3/4" x 1/2" COPPER CLAD GROUND ROD BELOW TOP OF ROD 6" ABOVE SLAB

PRIVATE CONTRACT No. 6198  
LOMITA BLDG. DIST. No. 12  
W.S. 30-42 Route Guide 19-F-4  
TWO SHEETS

COUNTY OF LOS ANGELES, CALIFORNIA  
APPROVED: JOHN A. LAMBIE, County Engineer  
By *[Signature]* Chief Sanitation Engineer  
APPROVED: *[Signature]* Chief Engineer  
Checked: *[Signature]* Office of County Engineer, Reg. C & No. 60976

The above approval applies to the pump station, 4" force main, manholes and 6" sanitary sewer line between manholes.

Before work can be started, the contractor must obtain a permit to excavate in County streets from the L.A. County Road Department, 930 W. 5th St., L.A. 45 and a permit to cover construction inspection and record plans from the County Engineer, Room 310 108 W. 2nd, St. L.A. 12

If work is to be done in a state highway, a permit must be obtained from the state of California, Division of Highways, 120 South Spring Street.

Approval of this plan by the County of Los Angeles does not constitute a representation as to the accuracy of the location of, or the existence or non-existence of, any underground utility, pipe, or structure within the limits of this project.

NOTE: No representative of the County Engineer will survey or layout any portion of the work. No revisions shall be made in these plans without approval of the County Engineer.

NOTE: THE CONTRACTOR SHALL NOTIFY THE CONSTRUCTION DIVISION OF THE COUNTY ENGINEER BY TELEPHONE, HATHORN BLVD., ESTABLISH AT LEAST 24 HOURS BEFORE STARTING ANY WORK UNDER THIS CONTRACT.

NO.	REV.	DESCRIPTION	DATE
1		AS SHOWN	
2		AS SHOWN	
3		AS SHOWN	
4		AS SHOWN	
5		AS SHOWN	
6		AS SHOWN	
7		AS SHOWN	
8		AS SHOWN	
9		AS SHOWN	
10		AS SHOWN	
11		AS SHOWN	
12		AS SHOWN	
13		AS SHOWN	
14		AS SHOWN	
15		AS SHOWN	
16		AS SHOWN	
17		AS SHOWN	
18		AS SHOWN	
19		AS SHOWN	
20		AS SHOWN	
21		AS SHOWN	
22		AS SHOWN	
23		AS SHOWN	
24		AS SHOWN	
25		AS SHOWN	
26		AS SHOWN	
27		AS SHOWN	
28		AS SHOWN	
29		AS SHOWN	
30		AS SHOWN	
31		AS SHOWN	
32		AS SHOWN	
33		AS SHOWN	
34		AS SHOWN	
35		AS SHOWN	
36		AS SHOWN	
37		AS SHOWN	
38		AS SHOWN	
39		AS SHOWN	
40		AS SHOWN	
41		AS SHOWN	
42		AS SHOWN	
43		AS SHOWN	
44		AS SHOWN	
45		AS SHOWN	
46		AS SHOWN	
47		AS SHOWN	
48		AS SHOWN	
49		AS SHOWN	
50		AS SHOWN	

812 WEST EIGHTH STREET, LOS ANGELES, CALIFORNIA  
**QUINTON ENGINEERS, LTD.**  
PLANNING • ENGINEERING • ARCHITECTURE

6 GARVANIZING PLANT FOR  
**JOSLYN PACIFIC CO.**  
1202 E. QUINCY STREET, LONG BEACH

UTILITY DIVISION

DATE	BY	DATE	BY
	M. HOLIN		<i>[Signature]</i>
	C. AURTZ		
	M. HOLIN		

NO. 6198  
SHEET 2 OF 2  
DATE: 6-1-52