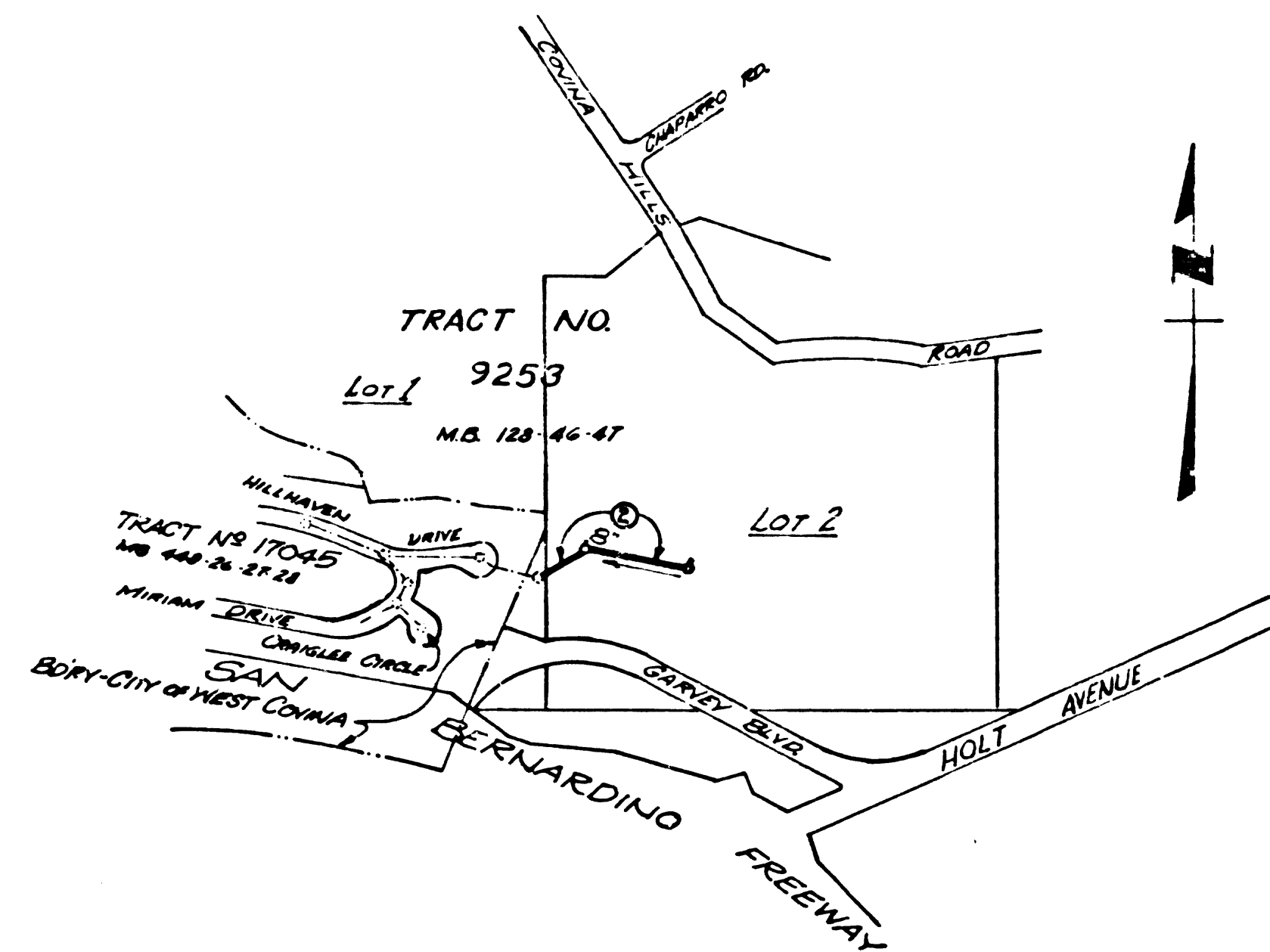


BENCH MARK BM 17-13
 FR. 1181-120
 N.W. COR. COTYNA HILLS ROAD & HOLT AVE., 10' WEST OF &
 1/2" DIA. 4" DEPTH OF COTYNA HILLS 12" IN DIAM. PROTECTED
 BY A C.I. CONCRETE MANHOLE "C.I. SILENT MAN" A STD. CO. 30" DIA. MANHOLE
 MARKED "B.M. 17-13, 1952 ADJ. REGS", SET IN CONCRETE 10" BELOW SURFACE.
 ADJ. ELEV. 652.241 - 1952 ADJ.



INDEX MAP
 Scale 1" = 600'
 P.C. 6201
 PRIVATE SEWER

NO CHARGE FOR CONNECTIONS
Herald W. Keeny 5-14-62

SAN DIMAS BLDG. DIST. NO. 10

- NOTES:
1. PROVIDE STAKES ON THE PROPERTY LINE OR PROPERTY LINES PRODUCED AT RIGHT ANGLES TO THE SEWER LINE AT THE CENTER LINE OF EACH MANHOLE.
 2. NO REPRESENTATIVE OF THE COUNTY ENGINEER WILL SURVEY OR LAY OUT ANY PORTION OF THE WORK.
 3. THE OWNER OR HIS AUTHORIZED REPRESENTATIVE SHALL FURNISH THE COUNTY ENGINEER WITH GRADE SHEETS AND STATIONING FOR ALL HOUSE LATERALS AND Y BRANCHES AND SHALL PROVIDE STAKES FOR THEM AT THEIR PROPER LOCATIONS WITH STATIONING PLAINLY MARKED. ANY CHANGE IN LOCATION SHALL BE REQUESTED IN WRITING BY THE OWNER OR HIS REPRESENTATIVE.
 4. FILL MUST BE IN PLACE BEFORE SEWER IS CONSTRUCTED. RELATIVE COMPACTION MUST BE AT LEAST 90% AT OPTIMUM MOISTURE CONTENT ALONG THE MAIN LINE SEWER.
 5. NO REVISIONS SHALL BE MADE IN THESE PLANS WITHOUT THE APPROVAL OF THE COUNTY ENGINEER.
 6. USE STANDARD MANHOLE FRAMES AND COVERS, 5-117
 7. USE EXTRA STRENGTH PIPE, ALL PIPE IS STANDARD DEPTH, EXCEPT AS NOTED.
 8. USE "WEDGELOCK" OR "SPEED-SEAL" FOR ALL V.C.P. JOINTS PER SPECS., SECS. 34 & 48.
 9. RESURFACE ALL TRENCH WITHIN PAVED AREA TO MEET L.A. COUNTY ROAD DEPT. OR CALIF. STATE HIGHWAY REQUIREMENTS IN ACCORDANCE WITH PERMITS.
 10. ENCASE FOUR FEET OF SEWER AT POINTS OF INTERFERENCE WITH POLES, CASE III, 5-172.
 11. STANDARD SPECIFICATIONS DATED OCTOBER 20, 1951 APPLY IN THE CONSTRUCTION OF THIS PROJECT.
 12. ALL MANHOLES SHALL BE BRICK SEWER STRUCTURES, 5-104.
 13. FOR ALLOWABLE LEAKAGE TEST USE FORMULA NO. 2, SPECS., SEC. 54.
 14. MANHOLE TOPS TO BE SIX INCHES ABOVE FINISHED GRADE.
 15. THE CONTRACTOR SHALL NOTIFY THE CONSTRUCTION DIVISION BY TELEPHONE, MADISON 9-4741, EXT. 851 AT LEAST TWENTY-FOUR HOURS BEFORE STARTING ANY WORK UNDER THIS CONTRACT.

NO CONNECTIONS FOR THE DISPOSAL OF INDUSTRIAL WASTES SHALL BE MADE TO SEWERS SHOWN ON THESE DRAWINGS WITHOUT WRITTEN PERMISSION FROM THE CHIEF ENGINEER AND GENERAL MANAGER OF THE COUNTY SANITATION DISTRICTS.

APPROVED: DATE:
R.E. Patten 5/15/62
 CITY ENGINEER
 CITY OF WEST COTYNA

PROFILE ALIGNMENT AND GRADE OF **P.C. 6201**
SANITARY SEWERS PAGE 1
 TO BE CONSTRUCTED FOR **J.N. 0358.10**
BAPTIST THEOLOGICAL SEMINARY
PRIVATE SEWER
PRIVATE CONTRACT NO. 6201

W.S. **48**
 1 SHEET 2 PAGES
 SCALE: VERT. 1" = 4'
 HORIZ. 1" = 40'
 MARCH, 1962
 PREPARED IN THE OFFICES OF
BAKER, PIERCE & ASSOCIATES
 1632 WEST FIFTH AVENUE
 POMONA, CALIFORNIA - MA 8-5192 & 623-3598
 By: *William B. Barrett*
 REG. C. E. NO. 3623

31997

FOR LEGEND SEE PLAN NO. S-A-64

NOTE:
 GRADES TO WHICH THIS IMPROVEMENT IS TO BE CONSTRUCTED ARE SHOWN ON PLANS AND PROFILES. GRADE POINTS FOR TOP OF CURBS, CENTER LINE OF STREETS OR CENTER LINE OF ALLEYS ARE SHOWN BY CIRCLES ON PROFILES. AT ALL POINTS BETWEEN DESIGNATED POINTS THE GRADE SHALL BE ESTABLISHED SO AS TO CONFORM TO A STRAIGHT LINE DRAWN BETWEEN SAID DESIGNATED POINTS.
 ELEVATIONS ARE IN FEET ABOVE U.S.C. & G.S. SEA LEVEL DATUM OF 1929.
 THIS DRAWING AND THE DATA HEREON ARE HEREBY MADE A PART OF THE SPECIFICATIONS.
 WORK SHALL BE CONSTRUCTED ACCORDING TO SPECIFICATIONS ON FILE IN THE OFFICE OF THE COUNTY ENGINEER AND SHALL BE PROSECUTED ONLY IN THE PRESENCE OF THE COUNTY ENGINEER.
 BEFORE WORK CAN BE STARTED THE CONTRACTOR MUST OBTAIN A PERMIT TO EXCAVATE IN COUNTY STREETS FROM THE L.A. COUNTY ROAD DEPT., DISTRICT OFFICE NO. 1, AND PAY A FEE TO THE COUNTY ENGINEER, ROOM 300, COUNTY ENGINEER'S BUILDING, 100 N. GULF ST., LOS ANGELES, CALIF. SUFFICIENT TO COVER THE COST OF CONSTRUCTION INSPECTION AND RECORD PLANS.
 APPROVAL OF THIS PLAN BY THE COUNTY OF LOS ANGELES DOES NOT CONSTITUTE A REPRESENTATION AS TO THE ACCURACY OF THE LOCATION OF OR THE EXISTENCE OR NON-EXISTENCE OF ANY UNDERGROUND UTILITY PIPE, OR STRUCTURE WITHIN THE LIMITS OF THIS PROJECT. THIS NOTE APPLIES TO ALL PAGES.
 IF WORK IS TO BE DONE IN A STATE HIGHWAY, A PERMIT MUST BE OBTAINED FROM THE STATE OF CALIFORNIA, DIVISION OF HIGHWAYS, 120 SOUTH SPRING STREET.

COUNTY OF LOS ANGELES, CALIFORNIA

APPROVED, JOHN A. LAMBIE, COUNTY ENGINEER APPROVED, J. J. PROKHAKIST, CHIEF ENGINEER
 CO. SAN. DIST. NO. 12

By: *Michael S. Patten* ASST. SANITATION ENGINEER By: *W. B. Barrett* OFFICE ENGINEER
 CHECKED BY: *Jim Duda 5-11-62*
 OFFICE OF COUNTY ENGINEER, REG. C. E. NO. 9404

SUBMITTED *W.P. Reinhardt 5-14-62*
 SAN DIMAS REGIONAL ENGINEER

NO CHARGE FOR CONNECTIONS
 PRIVATE SEWER

31998

