

BENCH MARK:  
 L. & T. West end of conc. headwall  
 ±30' North & ±45' West of E of  
 Artesia Blvd. & Palo Verde Ave.  
 S.Y. 1492 Co. Sur.  
 Elev. 66.078 Bellflower 1955 Adj.

BELLFLOWER BLDG. DIST. NO. 4.07

PROFILE ALIGNMENT AND GRADE OF P.C. 6202  
 SANITARY SEWERS PAGE 1  
 TO BE CONSTRUCTED IN

TRACT NO 26948  
 PRIVATE CONTRACT NO. 6202

W.S. 33  
 1 SHEET, 2 PAGES  
 SCALE: VERT. 1"=4' March 1962  
 HORIZ. 1"=40'  
 PREPARED IN THE OFFICES OF  
**JONES SURVEY SERVICE**

323 87

- NOTES:
- PROVIDE STAKES ON THE PROPERTY LINE OR PROPERTY LINES PRODUCED AT RIGHT ANGLES TO THE SEWER LINE AT THE CENTER LINE OF EACH MANHOLE.
  - NO REPRESENTATIVE OF THE CITY ENGINEER WILL SURVEY OR LAY OUT ANY PORTION OF THE WORK.
  - THE OWNER OR HIS AUTHORIZED REPRESENTATIVE SHALL FURNISH THE CITY ENGINEER WITH GRADE SHEETS AND STATIONING FOR ALL HOUSE LATERALS AND Y BRANCHES AND SHALL PROVIDE STAKES FOR THEM AT THEIR PROPER LOCATIONS WITH STATIONING PLAINLY MARKED. ANY CHANGE IN LOCATION SHALL BE REQUESTED IN WRITING BY THE OWNER OR HIS REPRESENTATIVE.
  - THE PRIVATE ENGINEER SHALL FURNISH THE HOUSE LATERAL DEPTH AT THE PROPERTY LINE BELOW THE TOP OF CURB ELEVATION FOR EACH HOUSE LATERAL ON THE GRADE SHEET.
  - NO REVISIONS SHALL BE MADE IN THESE PLANS WITHOUT THE APPROVAL OF THE CITY ENGINEER.
  - USE STANDARD MANHOLE FRAMES AND COVERS, S-117.
  - USE EXTRA STRENGTH PIPE. ALL PIPE IS STANDARD DEPTH.
  - USE CEMENT MORTAR OR MECHANICAL COMPRESSION JOINT FOR ALL V.C.P. JOINTS PER SPECS. SECS. 36 & 48. FOR MAIN LINE, BELLFLOWER.
  - RESURFACE ALL TRENCH WITHIN PAVED AREA TO MEET CITY ROAD DEPT. OR CALIF. STATE HIGHWAY REQUIREMENTS IN ACCORDANCE WITH PERMITS.
  - ENCASE FOUR FEET OF SEWER AT POINTS OF INTERFERENCE WITH POLES, CASE III, S-112.
  - HOUSE LATERALS TO BE CONSTRUCTED WITH 1/4" RISE PER FOOT TO PROPERTY LINE.
  - ALL STRUCTURES SHALL BE BRICK SEWER STRUCTURES, S-104, EXCEPT AS NOTED BELOW.
  - FOR ALLOWABLE LEAKAGE TEST USE FORMULA NO. 1, SPECS. SEC. 54.
  - MANHOLE TOPS IN UNIMPROVED RIGHTS-OF-WAY TO BE SIX INCHES ABOVE FINISHED GRADE.
  - THE CONTRACTOR SHALL NOTIFY THE CONSTRUCTION DIVISION BY TELEPHONE, MADISON 9-4747, EXT. 81551, AT LEAST TWENTY-FOUR HOURS BEFORE STARTING ANY WORK UNDER THIS CONTRACT.
  - STANDARD SPECIFICATIONS DATED MAY 25, 1962 APPLY TO THE CONSTRUCTION OF THIS PROJECT.
  - PRECAST CONCRETE MANHOLES PER S-a-135 OR S-a-173 MAY BE USED AS AN ALTERNATE IN LOCATIONS APPROVED BY THE COUNTY ENGINEER.
  - USE MECHANICAL COMPRESSION JOINTS FOR ALL HOUSE LATERALS PER SPEC'S SEC. 56.

NO CHARGE FOR CONNECTIONS

William A. Haglund 62948

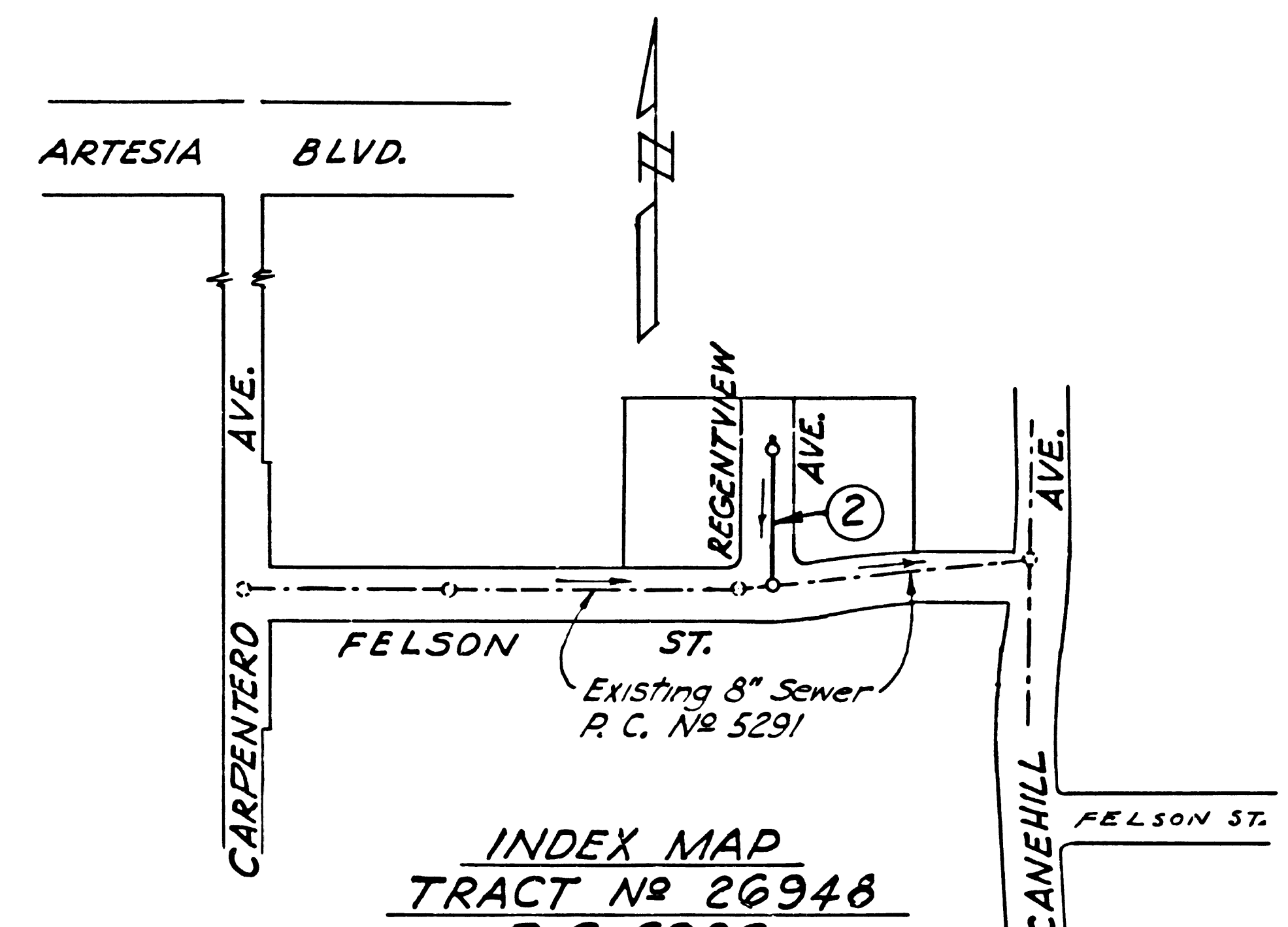
NO CONNECTIONS FOR THE DISPOSAL OF INDUSTRIAL WASTES SHALL BE MADE TO SEWERS SHOWN ON THESE DRAWINGS WITHOUT WRITTEN PERMISSION FROM THE CHIEF ENGINEER AND GENERAL MANAGER OF THE COUNTY SANITATION DISTRICTS.

NOTE:  
 GRADES TO WHICH THIS IMPROVEMENT IS TO BE CONSTRUCTED ARE SHOWN ON PLANS AND PROFILE. GRADE POINTS FOR TOP OF CURB, CENTER LINE OF STREETS, OR CENTER LINE OF ALLEYS ARE SHOWN BY CIRCLES ON PROFILES. AT ALL POINTS BETWEEN DESIGNATED POINTS THE GRADE SHALL BE ESTABLISHED SO AS TO CONFORM TO A STRAIGHT LINE DRAWN BETWEEN SAID DESIGNATED POINTS.  
 ELEVATIONS ARE IN FEET ABOVE U.S.C. & G.S. SEA LEVEL DATUM OF 1929.  
 THIS DRAWING AND THE DATA HEREON ARE HEREBY MADE A PART OF THE SPECIFICATIONS.  
 WORK SHALL BE CONSTRUCTED ACCORDING TO SPECIFICATIONS ON FILE IN THE OFFICE OF THE CITY ENGINEER AND SHALL BE PROSECUTED ONLY IN THE PRESENCE OF THE CITY ENGINEER.  
 BEFORE WORK CAN BE STARTED, THE CONTRACTOR MUST OBTAIN A PERMIT TO EXCAVATE IN CITY STREETS FROM THE L. A. COUNTY ROAD DEPT. DISTRICT OFFICE NO. 4 AND MAKE A DEPOSIT WITH THE CITY OF BELLFLOWER \$959.00 BELMONT AVE., BELLFLOWER, SUFFICIENT TO COVER THE COST OF CONSTRUCTION INSPECTION AND RECORD PLANS.  
 APPROVAL OF THIS PLAN BY THE CITY OF BELLFLOWER DOES NOT CONSTITUTE A REPRESENTATION AS TO THE ACCURACY OF THE LOCATION OF OR THE EXISTENCE OR NON-EXISTENCE OF ANY UNDERGROUND UTILITY PIPE, OR STRUCTURE WITHIN THE LIMITS OF THIS PROJECT. THIS NOTE APPLIES TO ALL PAGES.  
 IF WORK IS TO BE DONE IN A STATE HIGHWAY, A PERMIT MUST BE OBTAINED FROM THE STATE OF CALIFORNIA, DIVISION OF HIGHWAYS, 120 SOUTH SPRING STREET.

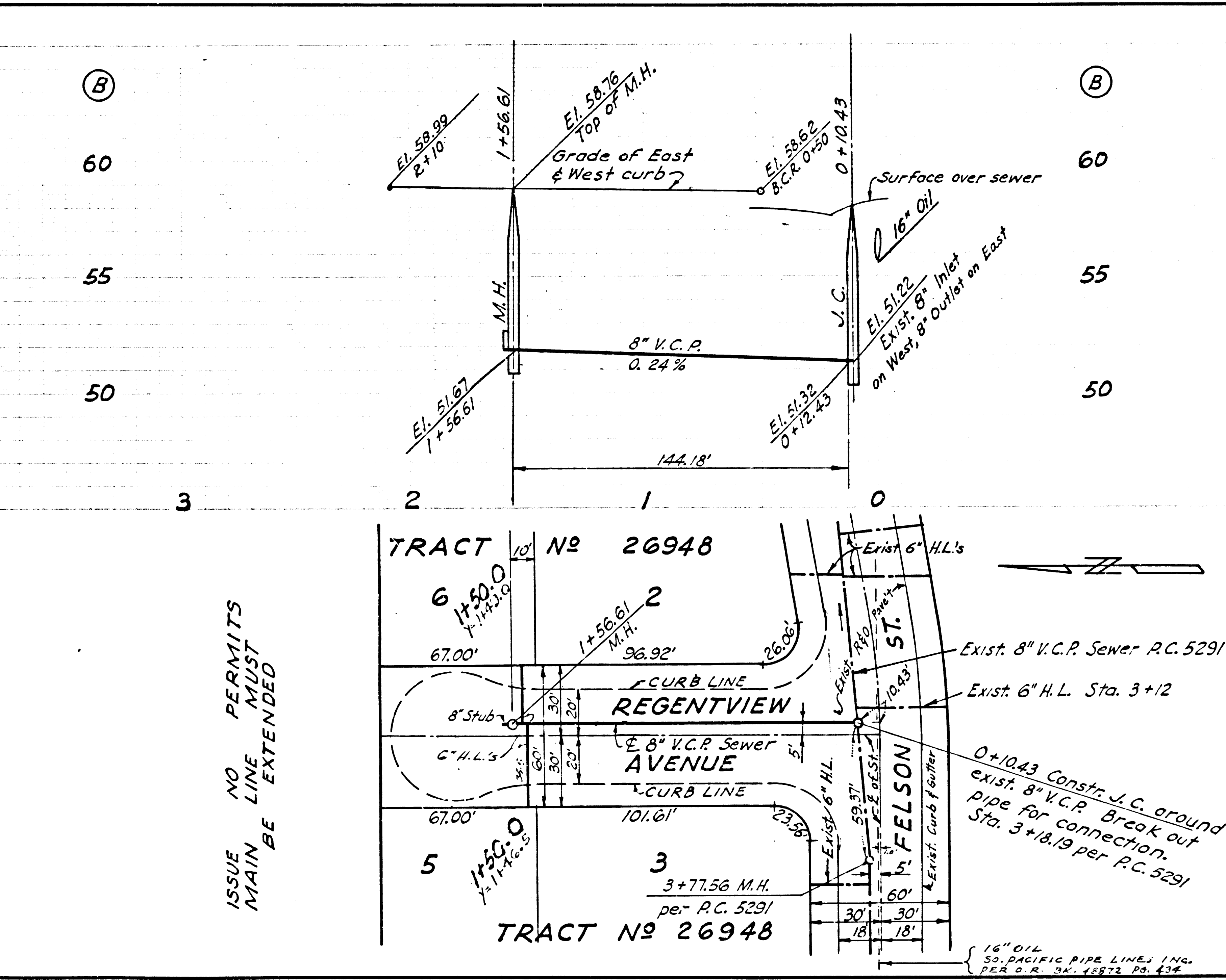
CITY OF BELLFLOWER, CALIFORNIA

APPROVED, JOHN A. LAMBIE, CITY ENGINEER APPROVED, J.D. PARKURST, CHIEF ENGINEER  
 CO. SAN. DIST. NO. 2  
 BY: *John A. Lambie* BY: *J.D. Parkurst*  
 ASST. SANITATION ENGINEER OFFICE ENGINEER  
 CHECKED BY: *John A. Lambie* 7-5-62  
 OFFICE OF CITY ENGINEER REG. C. E. NO. 3406

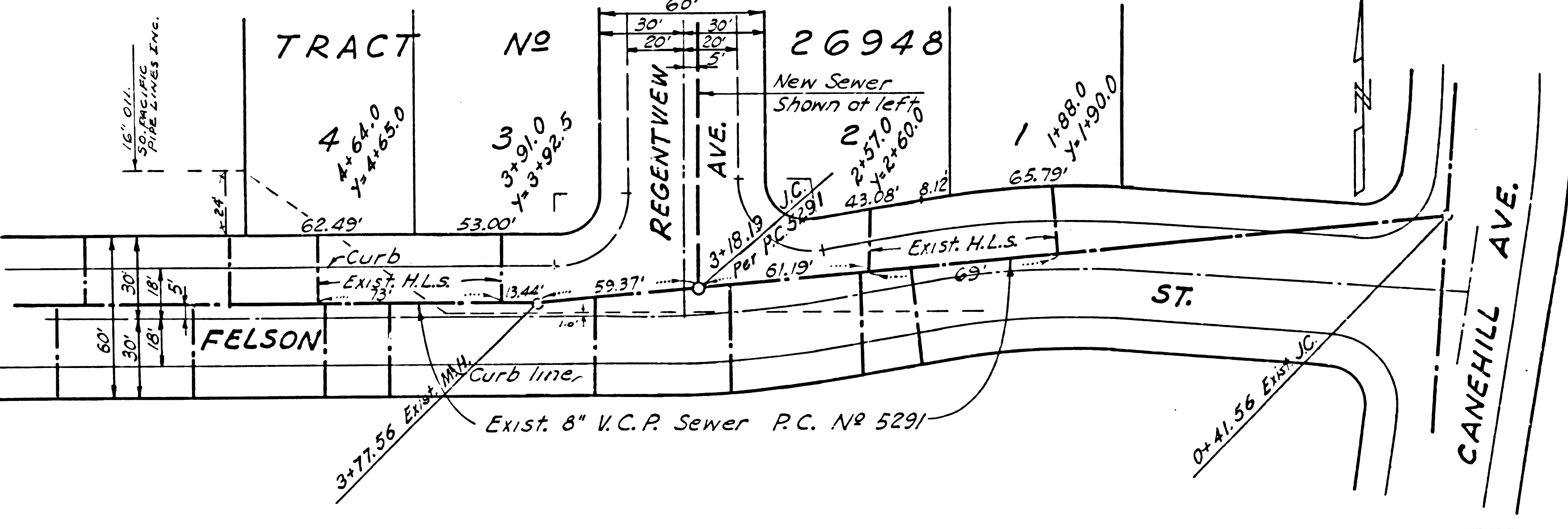
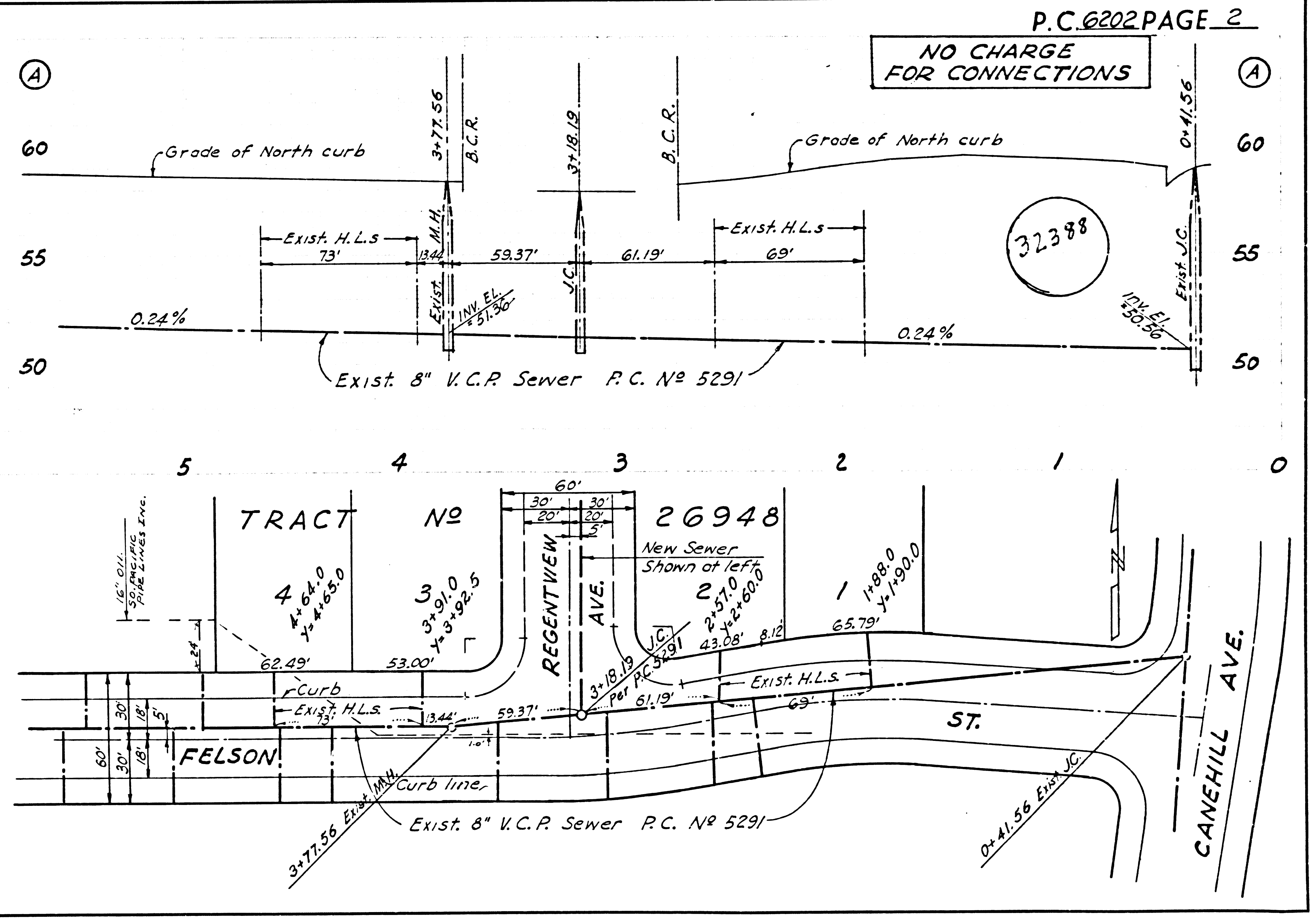
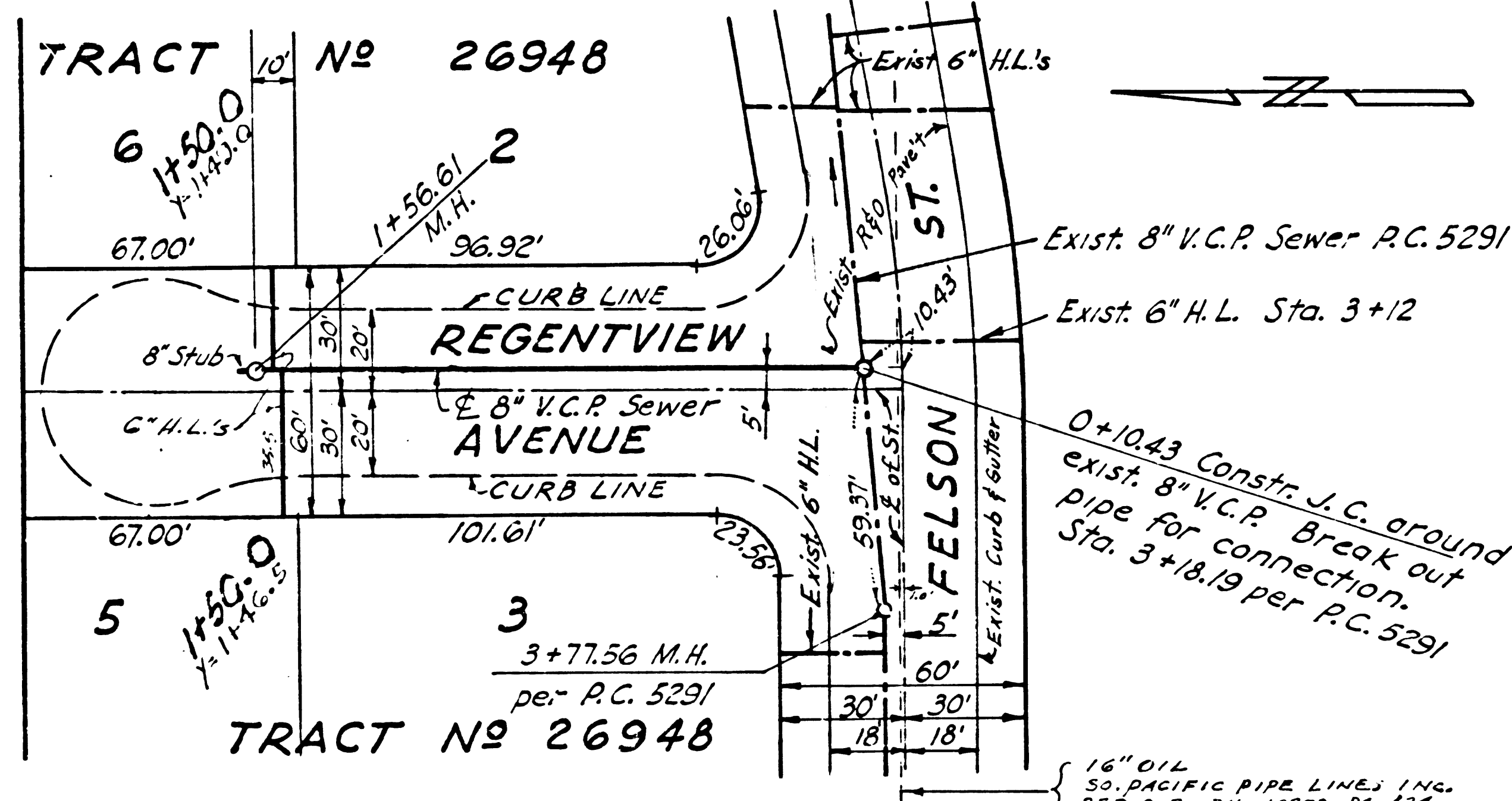
SUBMITTED BY: *John A. Lambie* 7-3-62  
 LOS CERRITOS REG. ENG. R.C.E. 3371



INDEX MAP  
 TRACT NO 26948  
 P.C. 6202  
 SCALE=1"=200'



ISSUE NO PERMITS MAIN LINE MUST BE EXTENDED



Y  
 O  
 U  
 R  
 C  
 O  
 U  
 N  
 T  
 Y  
 E  
 N  
 G  
 I  
 N  
 E  
 E  
 R  
 S  
 1  
 0  
 5  
 0  
 5