

BENCH MARK: SY 4205. Road Dept. B.M. tag at the S.W. cor. of Whittier Blvd. & Gerhart Ave. 1.66' South of 1.18' West of E. intersection. 2.1' South of E.C.R. Riviera Quad. 1955 Adj. ELEV. 108.029

CITY OF COMMERCE BLDG. DIST. NO. 6.01

PROFILE ALIGNMENT AND GRADE OF P.C. 6205

SANITARY SEWERS PAGE 1

TO BE CONSTRUCTED IN A
SANITARY SEWER RIGHT-OF-WAY
(GRACE PLACE-PRIVATE ST.)
PRIVATE CONTRACT NO. 6205

W.S. 36, B-3
 2 SHEETS; 3 PAGES
 SCALE: VERT. 1"=4' HORIZ. 1"=40'
 APRIL, 1962
 PREPARED IN THE OFFICES OF

32414

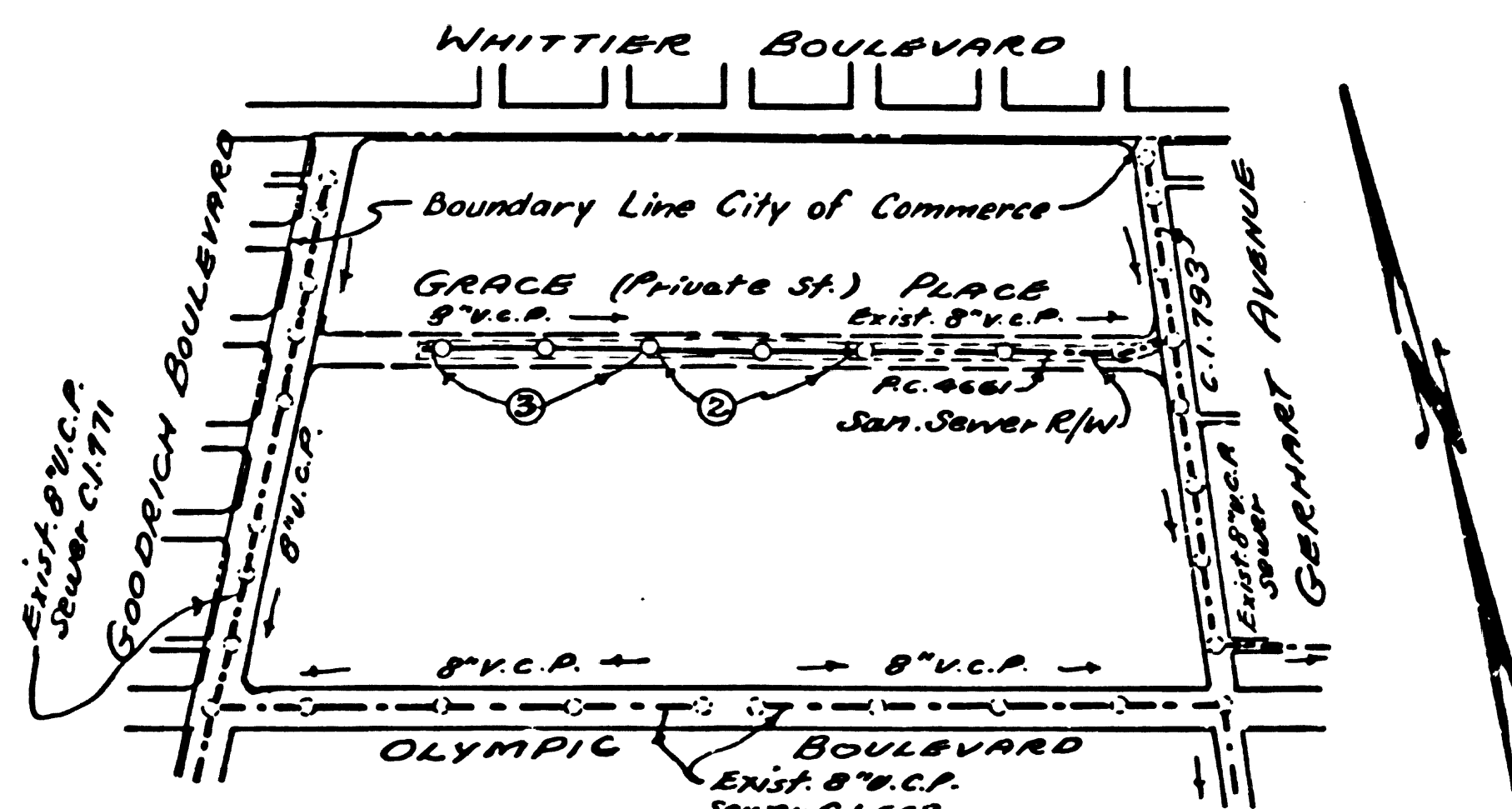
By: Glen Road
 REG. C. E. NO. 2993
 FOR LEGEND SEE PLAN NO. S-A-64

NOTE:
 GRADES TO WHICH THIS IMPROVEMENT IS TO BE CONSTRUCTED ARE SHOWN ON PLANS AND PROFILES. GRADE POINTS FOR TOP OF CURB, CENTER LINE OF STREETS, OR CENTER LINE OF ALLEYS ARE SHOWN BY CIRCLES ON PROFILES. AT ALL POINTS BETWEEN DESIGNATED POINTS THE GRADE SHALL BE ESTABLISHED SO AS TO CONFORM TO A STRAIGHT LINE DRAWN BETWEEN SAID DESIGNATED POINTS.
 ELEVATIONS ARE IN FEET ABOVE U.S.C. & G.S. SEA LEVEL DATUM OF 1929.
 THIS DRAWING AND THE DATA HEREON ARE HEREBY MADE A PART OF THE SPECIFICATIONS OF THE CITY ENGINEER AND SHALL BE PROSECUTED ONLY IN THE PRESENCE OF THE CITY ENGINEER.
 BEFORE WORK CAN BE STARTED THE CONTRACTOR MUST OBTAIN A PERMIT TO EXCAVATE IN CITY STREETS FROM THE L.A. COUNTY ROAD DEPT., DISTRICT OFFICE NO. 16, AND MAKE A DEPOSIT WITH THE CITY OF COMMERCE 25¢ SOUTH ATLANTIC BOULEVARD, SUFFICIENT TO COVER THE COST OF CONSTRUCTION INSPECTION AND RECORD PLANS.
 APPROVAL OF THIS PLAN BY THE CITY OF COMMERCE DOES NOT CONSTITUTE A REPRESENTATION AS TO THE ACCURACY OF THE LOCATION OF OR THE EXISTENCE OR NON-EXISTENCE OF ANY UNDERGROUND UTILITY PIPE, OR STRUCTURE WITHIN THE LIMITS OF THIS PROJECT. THIS NOTE APPLIES TO ALL PAGES.
 IF WORK IS TO BE DONE IN A STATE HIGHWAY, A PERMIT MUST BE OBTAINED FROM THE STATE OF CALIFORNIA, DIVISION OF HIGHWAYS, 100 SOUTH SPRING STREET.

CITY OF COMMERCE, CALIFORNIA
 APPROVED, JOHN A. LAMBIE, CITY ENGINEER APPROVED, JOHN D. PARKHURST, CHIEF ENGINEER
 CO. SAN. DIST. NO. 6
 BY: Richard S. Kline ASST. SANITATION ENGINEER BY: J. D. Parkhurst OFFICE ENGINEER
 CHECKED BY: St. J. ... OFFICE OF CITY ENGINEER, REG. C. E. NO. 2426

SUBMITTED: N. F. Brannan
 SAN GABRIEL VALLEY REGIONAL ENGINEER

- NOTES:
- PROVIDE STAKES ON THE PROPERTY LINE OR PROPERTY LINES PRODUCED AT RIGHT ANGLES TO THE SEWER LINE AT THE CENTER LINE OF EACH MANHOLE.
 - NO REPRESENTATIVE OF THE CITY ENGINEER WILL SURVEY OR LAY OUT ANY PORTION OF THE WORK.
 - THE OWNER OR HIS AUTHORIZED REPRESENTATIVE SHALL FURNISH THE CITY ENGINEER WITH GRADE SHEETS AND STATIONING FOR ALL HOUSE LATERALS AND Y BRANCHES AND SHALL PROVIDE STAKES FOR THEM AT THEIR PROPER LOCATIONS WITH STATIONING PLAINLY MARKED. ANY CHANGE IN LOCATION SHALL BE REQUESTED IN WRITING BY THE OWNER OR HIS REPRESENTATIVE.
 - THE PRIVATE ENGINEER SHALL FURNISH THE HOUSE LATERAL DEPTH AT THE PROPERTY LINE BELOW THE TOP OF CURB ELEVATION FOR EACH HOUSE LATERAL ON THE GRADE SHEET.
 - NO REVISIONS SHALL BE MADE IN THESE PLANS WITHOUT THE APPROVAL OF THE CITY ENGINEER.
 - USE STANDARD MANHOLE FRAMES AND COVERS, 5-117
 - USE STANDARD STRENGTH PIPE. ALL PIPE IS STANDARD DEPTH.
 - USE CEMENT MORTAR OR MECHANICAL COMPRESSION JOINTS FOR ALL V.C.P. IN MAIN LINE PER SPEC'S. SECS. 364-48
 - USE MECHANICAL COMPRESSION JOINTS FOR ALL V.C.P. HOUSE LATERALS PER SPEC'S. SEC. 36.
 - ENCASE FOUR FEET OF SEWER AT POINTS OF INTERFERENCE WITH POLES, CASE III, 5-172.
 - MANHOLE TOPS IN IMPROVED RIGHTS-OF-WAY TO BE LEVEL WITH FINISHED GRADE.
 - THE CONTRACTOR SHALL NOTIFY THE CONSTRUCTION DIVISION BY TELEPHONE, MADISON 9-474, AT LEAST TWENTY-FOUR HOURS BEFORE STARTING ANY WORK UNDER THIS CONTRACT.
 - STANDARD SPECIFICATIONS DATED MAY 25, 1962, APPLY TO THE CONSTRUCTION OF THIS PROJECT.
 - THE DISTANCE OR LOCATION OF ANY UNDERGROUND UTILITY PIPE OR STRUCTURES WITHIN THIS PROJECT WAS NOT REVEALED BY A SEARCH OF THE AVAILABLE RECORDS. TO THE BEST OF OUR KNOWLEDGE THERE ARE NO SUCH UTILITIES DEEPLY RECORDED ON THIS MAP. THE CONTRACTOR IS REQUIRED TO TAKE DUE PRECAUTIONARY MEASURES TO PROTECT ANY UTILITY LINES NOT RECORDED AND NOT SHOWN ON THIS DRAWING.
 - NO CONNECTIONS FOR THE DISPOSAL OF INDUSTRIAL WASTES SHALL BE MADE TO SEWERS SHOWN ON THESE DRAWINGS WITHOUT WRITTEN PERMISSION FROM THE CHIEF ENGINEER AND GENERAL MANAGER OF THE COUNTY SANITATION DISTRICTS.
 - USE MECHANICAL COMPRESSION JOINTS FOR ALL V.C.P. HOUSE LATERALS PER SPEC'S., SEC. 36.



INDEX MAP
 SCALE: 1"=600'
 P.C. 6205
 @ Indicates page numbers

NO CONNECTIONS FOR THE DISPOSAL OF INDUSTRIAL WASTES SHALL BE MADE TO SEWERS SHOWN ON THESE DRAWINGS WITHOUT WRITTEN PERMISSION FROM THE CHIEF ENGINEER AND GENERAL MANAGER OF THE COUNTY SANITATION DISTRICTS

NO CHARGE FOR CONNECTIONS
Richard S. Kline 7-16-62

APPROVED BY: Edward E. Thompson DATE: 7-19-62
 INDUSTRIAL WASTE DIVISION

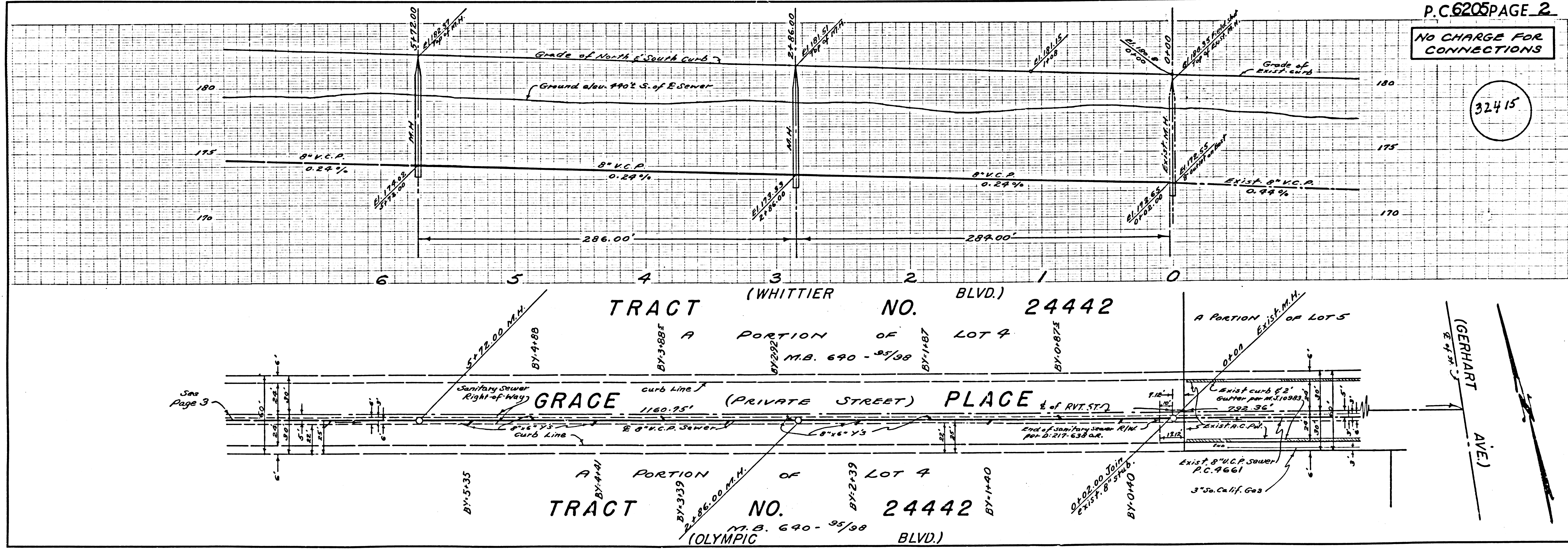
P.C. 6205 (GRACE PLACE) (PRIVATE STREET) 32414

P.C. 6205 (GRACE PLACE) (PRIVATE STREET) 32414

P.C. 6205 PAGE 2

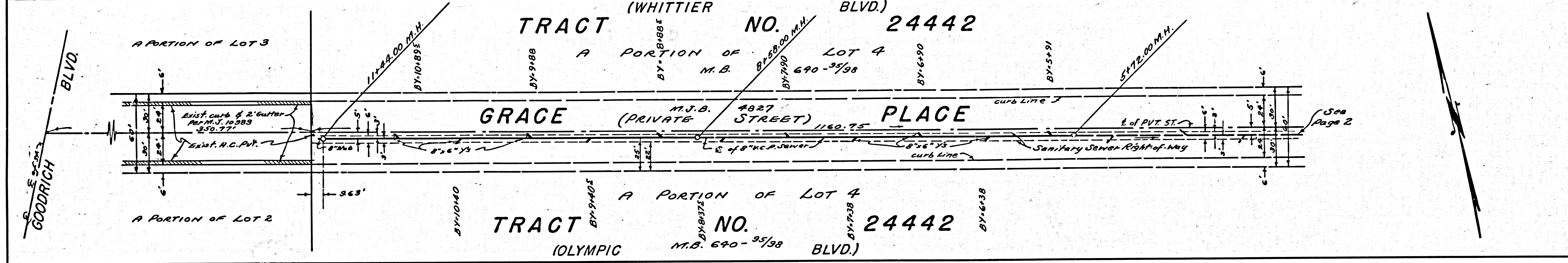
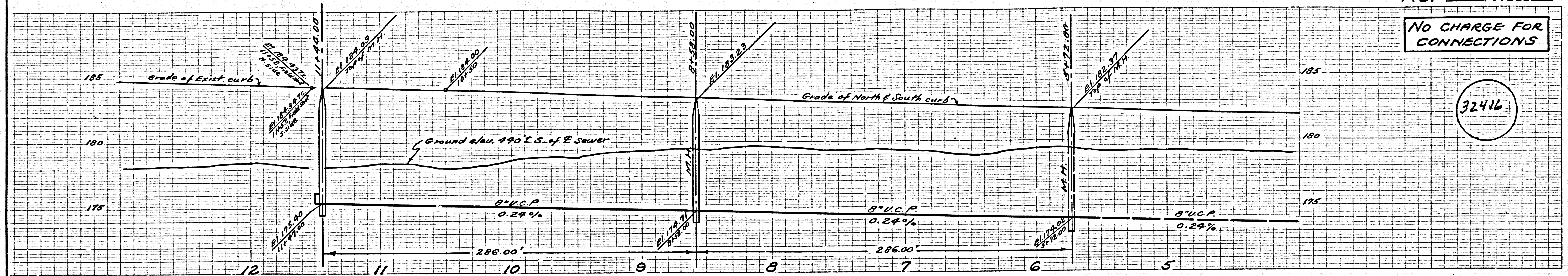
NO CHARGE FOR CONNECTIONS

32415

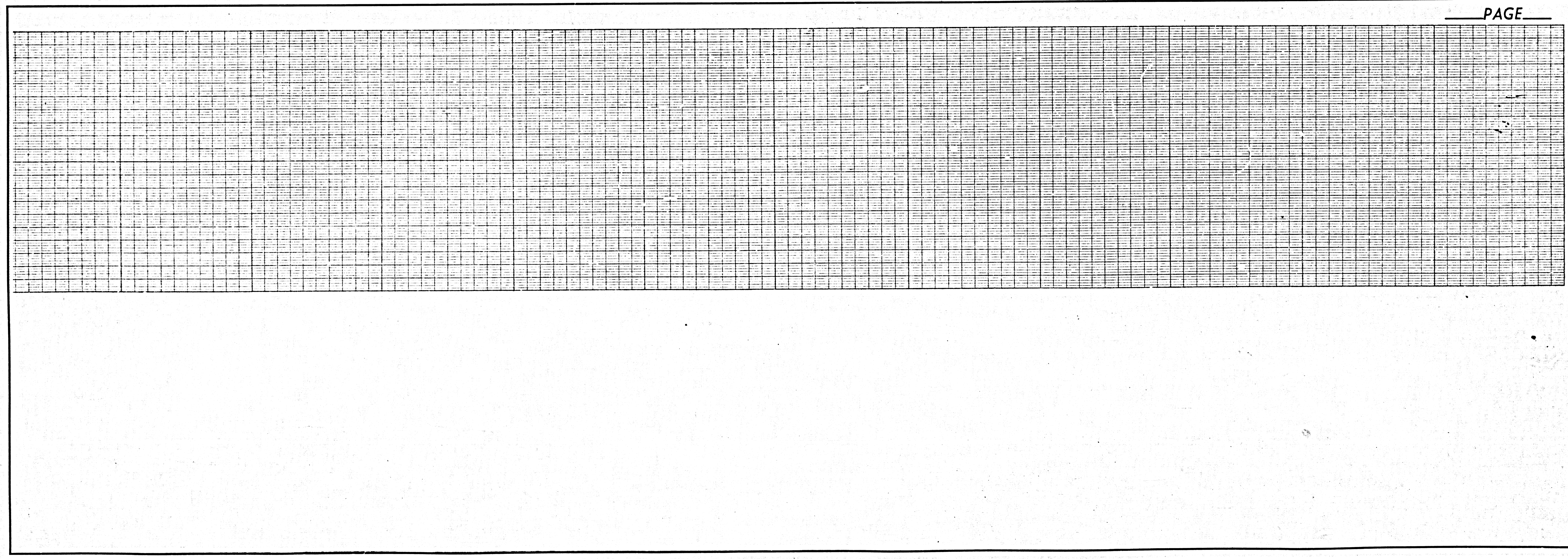


NO CHARGE FOR CONNECTIONS

32416



PAGE



60 2502 2349 2349 (TRAFFIC SIGNAGE)

32416 (TRAFFIC SIGNAGE)