

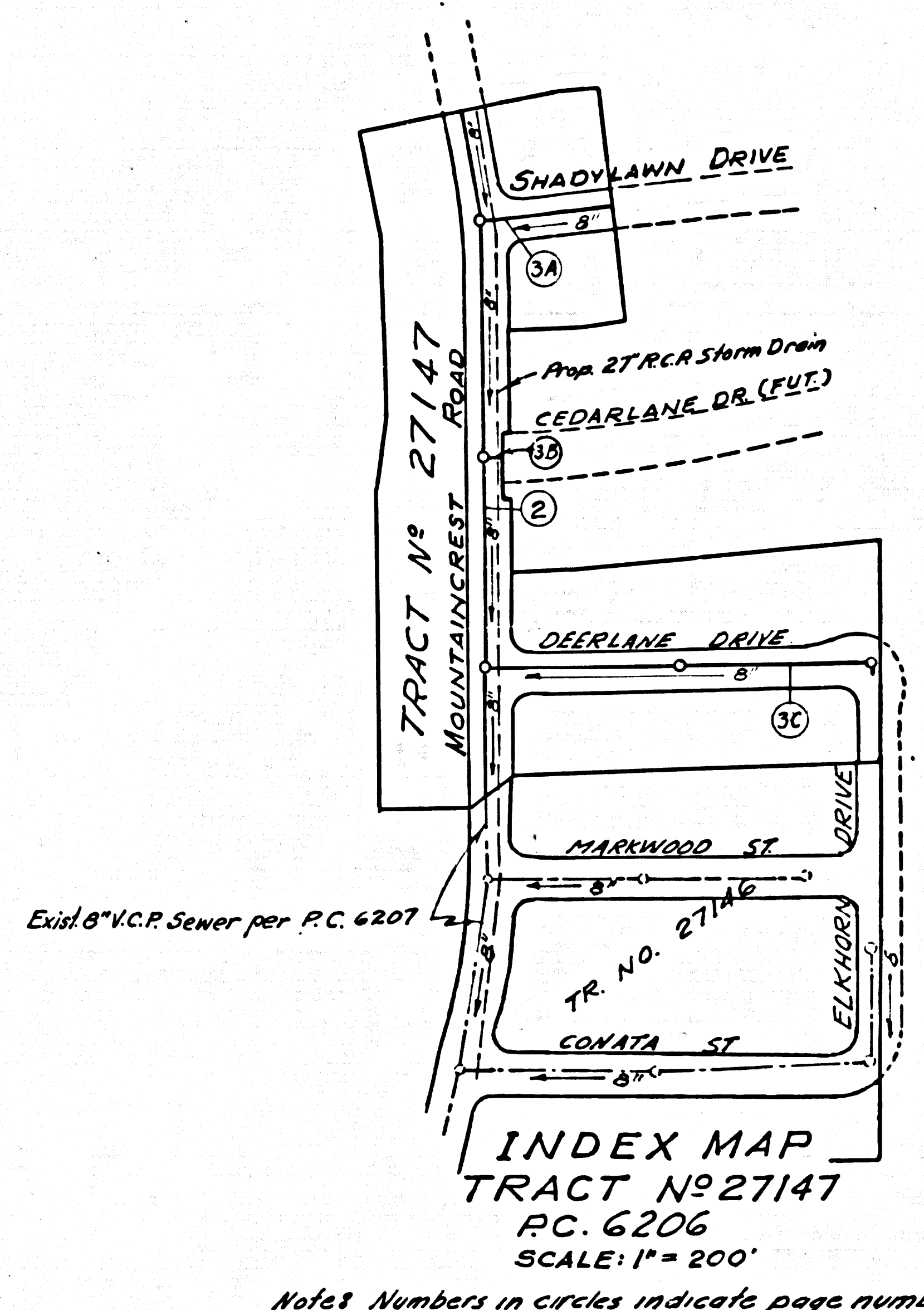
DOUBLE SCALE
CITY OF DUARTE BLDG. DIST. NO. 5.02

PROFILE ALIGNMENT AND GRADE OF P.C. 6206
SANITARY SEWERS PAGE 1
TO BE CONSTRUCTED IN
TRACT No 27147

PRIVATE CONTRACT NO. 6206

W.S. 47
2 SHEETS; 3 PAGES
SCALE: VERT. 1"=8' HORIZ. 1"=40' MARCH, 1962
PREPARED IN THE OFFICES OF
ADAMS AND ELLS
CIVIL ENGINEERS
By: *William C. Adams*
REG. C. E. NO. 10990
FOR LEGEND SEE PLAN NO. S-A-64

32984



Bench Mark
S.G. 1584 Elev. 379.888 Base Line Quad 1955
U.S.G.S. Bronze Tablet N.W. "S-57-1923" Set in conc. 135' N. & Foothill Blvd. & 23' E. Fish Canyon Rd.

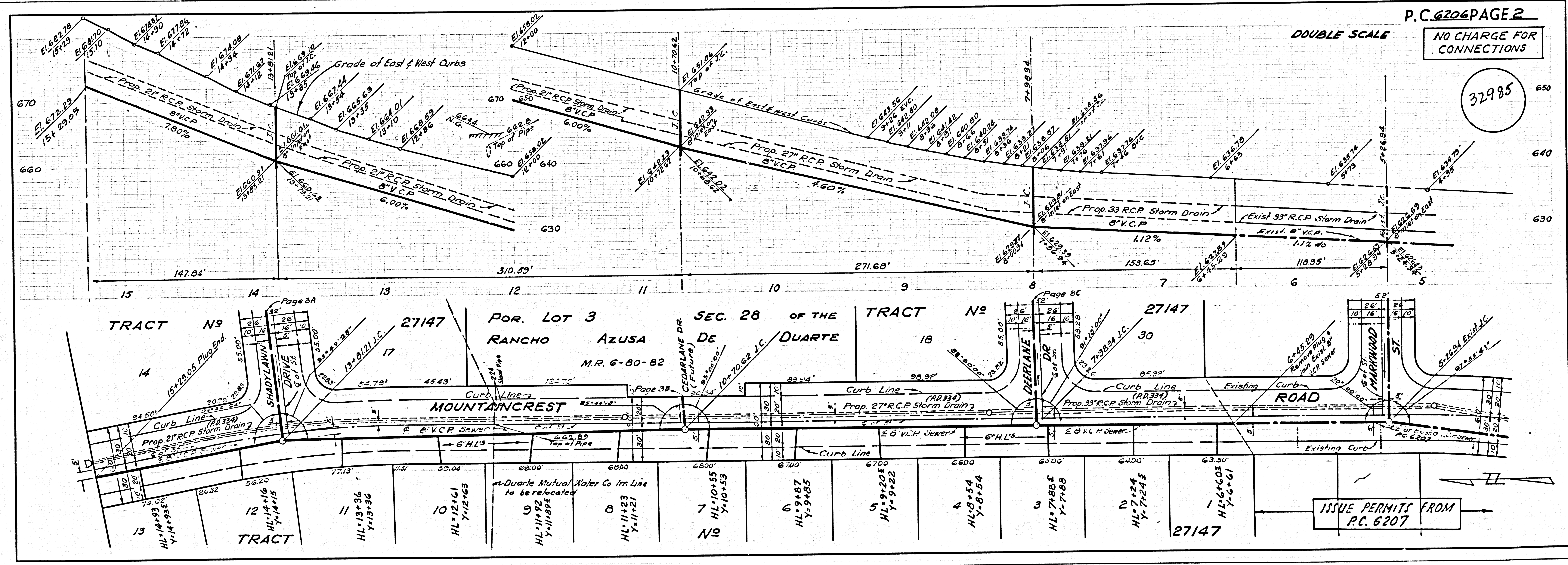
- NOTES:
1. PROVIDE STAKES ON THE PROPERTY LINE OR PROPERTY LINES PRODUCED AT RIGHT ANGLES TO THE SEWER LINE AT THE CENTER LINE OF EACH MANHOLE.
 2. NO REPRESENTATIVE OF THE CITY ENGINEER WILL SURVEY OR LAY OUT ANY PORTION OF THE WORK.
 3. THE OWNER OR HIS AUTHORIZED REPRESENTATIVE SHALL FURNISH THE CITY ENGINEER WITH GRADE SHEETS AND STATIONING FOR ALL HOUSE LATERALS AND Y BRANCHES AND SHALL PROVIDE STAKES FOR THEM AT THEIR PROPER LOCATIONS WITH STATIONING PLAINLY MARKED. ANY CHANGE IN LOCATION SHALL BE REQUESTED IN WRITING BY THE OWNER OR HIS REPRESENTATIVE.
 4. THE PRIVATE ENGINEER SHALL FURNISH THE HOUSE LATERAL DEPTH AT THE PROPERTY LINE BELOW THE TOP OF CURB ELEVATION FOR EACH HOUSE LATERAL ON THE GRADE SHEET.
 5. NO REVISIONS SHALL BE MADE IN THE PLANS WITHOUT THE APPROVAL OF THE CITY ENGINEER.
 6. USE STANDARD MANHOLE FRAMES AND COVERS, 5-11"
 7. USE EXTRA STRENGTH PIPE, ALL PIPE STANDARD DEPTH.
 8. USE CEMENT MORTAR JOINTS OR MECHANICAL COMPRESSION JOINTS FOR ALL V.C.P. IN MAIN LINE PER SPECS., SECS. 36-148
 9. RESURFACE ALL TRENCH WITHIN PAVED AREA TO MEET L.A. COUNTY ROAD DEPT. OR CALIF. STATE HIGHWAY REQUIREMENTS IN ACCORDANCE WITH PERMITS.
 10. ENCASE FOUR FEET OF SEWER AT POINTS OF INTERFERENCE WITH POLES, CASE III, 5-172.
 11. HOUSE LATERALS TO BE CONSTRUCTED WITH INVERTS AT PROPERTY LINE 6 FEET BELOW CURB GRADE EXCEPT AS NOTED.
 12. MANHOLES SHALL BE BRICK SEWER STRUCTURES PER S-106. PRECAST CONCRETE MANHOLES PER S-4-135 OR S-6-173 MAY BE USED AS AN ALTERNATE IN LOCATIONS APPROVED BY THE CITY ENGINEER.
 13. FOR ALLOWABLE LEAKAGE TEST USE FORMULA NO. 1 SPECS., SEC. 34.
 14. MANHOLE TOPS IN UNIMPROVED RIGHTS-OF-WAY TO BE SIX INCHES ABOVE FINISHED GRADE.
 15. THE CONTRACTOR SHALL NOTIFY THE CONSTRUCTION DIVISION BY TELEPHONE, MADISON 9-477, EXTENSION AT LEAST TWENTY-FOUR HOURS BEFORE STARTING ANY WORK UNDER THIS CONTRACT.
 16. STANDARD SPECIFICATIONS DATED MAY 25, 1962 APPLY IN THE CONSTRUCTION OF THIS PROJECT.
 17. USE MECHANICAL COMPRESSION JOINTS FOR ALL V.C.P. HOUSE LATERALS PER SPECS., SEC. 36.
 18. ALL STATE AND LOCAL TRENCH SAFETY ORDERS WILL BE RIGIDLY ENFORCED.

NO CHARGE FOR CONNECTIONS
R. Pearce 2/18/62

REVISION NOTE
Extended M.L. from sta. 4+48.09 to sta. 5+01.10 Sec. C, Page 3.
APPROVED: *N.P. Brauender*
DATE: 1-14-63

NOTE:
GRADES TO WHICH THIS IMPROVEMENT IS TO BE CONSTRUCTED ARE SHOWN ON PLANS AND PROFILE. GRADE POINTS FOR TOP OF CURBS, CENTER LINE OF STREETS, OR CENTER LINE OF ALLEYS ARE SHOWN BY CIRCLES ON PROFILES. AT ALL POINTS BETWEEN DESIGNATED POINTS THE GRADE SHALL BE ESTABLISHED SO AS TO CONFORM TO A STRAIGHT LINE DRAWN BETWEEN SAID DESIGNATED POINTS.
ELEVATIONS ARE IN FEET ABOVE U.S.C. & G.S. SEA LEVEL DATUM OF 1929.
THIS DRAWING AND THE DATA HEREON ARE HEREBY MADE A PART OF THE SPECIFICATIONS.
WORK SHALL BE CONSTRUCTED ACCORDING TO SPECIFICATIONS ON FILE IN THE OFFICE OF THE CITY ENGINEER AND SHALL BE PROSECUTED ONLY IN THE PRESENCE OF THE CITY ENGINEER.
BEFORE WORK CAN BE STARTED, THE CONTRACTOR MUST OBTAIN A PERMIT TO EXCAVATE IN CITY STREETS FROM THE L.A. COUNTY ROAD DEPT., DISTRICT OFFICE NO. 1 AND MAKE A DEPOSIT WITH THE CITY OF DUARTE \$250.00 TO COVER THE COST OF CONSTRUCTION INSPECTION AND RECORD PLANS.
APPROVAL OF THIS PLAN BY THE CITY OF DUARTE DOES NOT CONSTITUTE A REPRESENTATION AS TO THE ACCURACY OF THE LOCATION OF OR THE EXISTENCE OR NON-EXISTENCE OF ANY UNDERGROUND UTILITY PIPE, OR STRUCTURE WITHIN THE LIMITS OF THIS PROJECT. THIS NOTE APPLIES TO ALL PAGES.
IF WORK IS TO BE DONE IN A STATE HIGHWAY, A PERMIT MUST BE OBTAINED FROM THE STATE OF CALIFORNIA, DIVISION OF HIGHWAYS, 128 SOUTH SPRING STREET.

CITY OF DUARTE, CALIFORNIA
APPROVED, JOHN A. LAMBE, CITY ENGINEER APPROVED, JOHN D. PARKHURST, CHIEF ENGINEER
CO. SAN. DIST. NO. 22
BY: *Richard E. Keller* REST. SANITATION ENGINEER BY: *W. H. Williams* OFFICE ENGINEER
CHECKED BY: *J. K. Underwood*
OFFICE OF CITY ENGINEER, REG. C. E. NO. 9466
SUBMITTED *N.P. Brauender*
SAN GABRIEL VALLEY REGIONAL ENGINEER



DOUBLE SCALE

