

CITY OF DUARTE BLDG. DIST. NO. 502

PROFILE ALIGNMENT AND GRADE OF **P.C. 6207**
SANITARY SEWERS PAGE 1
 TO BE CONSTRUCTED IN
TRACT No 27146

Bench Mark:
 56.534 Elev 579.858 Base Line Quad 1955
 U.S.S. Bronze Tablet Med "5-57 1923" set in conc 3'5" N &
 Foothill Blvd 2'22" E of Fish Canyon Rd

- NOTES:
1. PROFILE STAKES ON THE PROPERTY LINE OR PROPERTY LINES PRODUCED AT RIGHT ANGLES TO THE SEWER LINE AT THE CENTER LINE OF EACH MANHOLE.
 2. NO REPRESENTATIVE OF THE CITY ENGINEER WILL SURVEY OR LAY OUT ANY PORTION OF THE WORK.
 3. THE OWNER OR HIS AUTHORIZED REPRESENTATIVE SHALL FURNISH THE CITY ENGINEER WITH GRADE SHEETS AND STATIONING FOR ALL HOUSE LATERALS AND Y BRANCHES AND SHALL PROVIDE STAKES FOR THEM AT THEIR PROPER LOCATIONS WITH STATIONING PLAINLY MARKED. ANY CHANGE IN LOCATION SHALL BE REQUESTED IN WRITING BY THE OWNER OR HIS REPRESENTATIVE.
 4. THE PRIVATE ENGINEER SHALL FURNISH THE HOUSE LATERAL DEPTH AT THE PROPERTY LINE BELOW THE TOP OF CURB RELEVATION FOR EACH HOUSE LATERAL ON THE GRADE SHEET.
 5. NO REVISIONS SHALL BE MADE IN THESE PLANS WITHOUT THE APPROVAL OF THE CITY ENGINEER.
 6. USE STANDARD MANHOLE FRAMES AND COVERS, S-117
 7. USE EXTRA STRENGTH PIPE, ALL PIPE STANDARD DEPTH
 8. USE CEMENT MORTAR JOINTS OR MECHANICAL COMPRESSION JOINTS FOR ALL V.C.P. MAIN LINE PER SPECS, SECS 34-148.
 9. RESURFACE ALL TRENCH WITHIN PAVED AREA TO MEET L.A. COUNTY ROAD DEPT OR CALIF. STATE HIGHWAY REQUIREMENTS IN ACCORDANCE WITH PERMITS.
 10. ENCASE FOUR FEET OF SEWER AT POINTS OF INTERFERENCE WITH POLES, CASE III, S-172.
 11. HOUSE LATERALS TO BE CONSTRUCTED WITH INVERTS AT PROPERTY LINE 6 FEET BELOW CURB GRADE EXCEPT AS NOTED.
 12. MANHOLES SHALL BE BRICK SEWER STRUCTURES PER S-104. PRECAST CONCRETE MANHOLES PER S-6-15E OR S-6-173 MAY BE USED AS AN ALTERNATE IN LOCATIONS APPROVED BY THE CITY ENGINEER.
 13. FOR ALLOWABLE LEAKAGE TEST USE FORMULA NO. 1, SPEC. SEC. 54.
 14. MANHOLE TOPS IN UNIMPROVED RIGHTS-OF-WAY TO BE SIX INCHES ABOVE FINISHED GRADE.
 15. THE CONTRACTOR SHALL NOTIFY THE CONSTRUCTION DIVISION BY TELEPHONE, MADISON 9-4747, 24 HOURS AT LEAST TWENTY-FOUR HOURS BEFORE STARTING ANY WORK UNDER THIS CONTRACT.
 16. STANDARD SPECIFICATIONS DATED MAY 28, 1962 APPLY IN THE CONSTRUCTION OF THIS PROJECT.
 17. USE MECHANICAL COMPRESSION JOINTS FOR ALL V.C.P. HOUSE LATERALS PER SPECS, SEC. 16.
 18. ALL STATE AND LOCAL TRENCH SAFETY ORDERS WILL BE RIGIDLY ENFORCED.

PRIVATE CONTRACT NO. 6207

W.S. 47
 2 SHEETS; 4 PAGES
 SCALE: VERT. 1"=4'
 HORIZ. 1"=40'
 FEBRUARY, 1962
 PREPARED IN THE OFFICES OF
ADAMS AND ELLS
 CIVIL ENGINEERS
 BY: *William P. Adams*
 REG. C. E. NO. 10880

REVISED

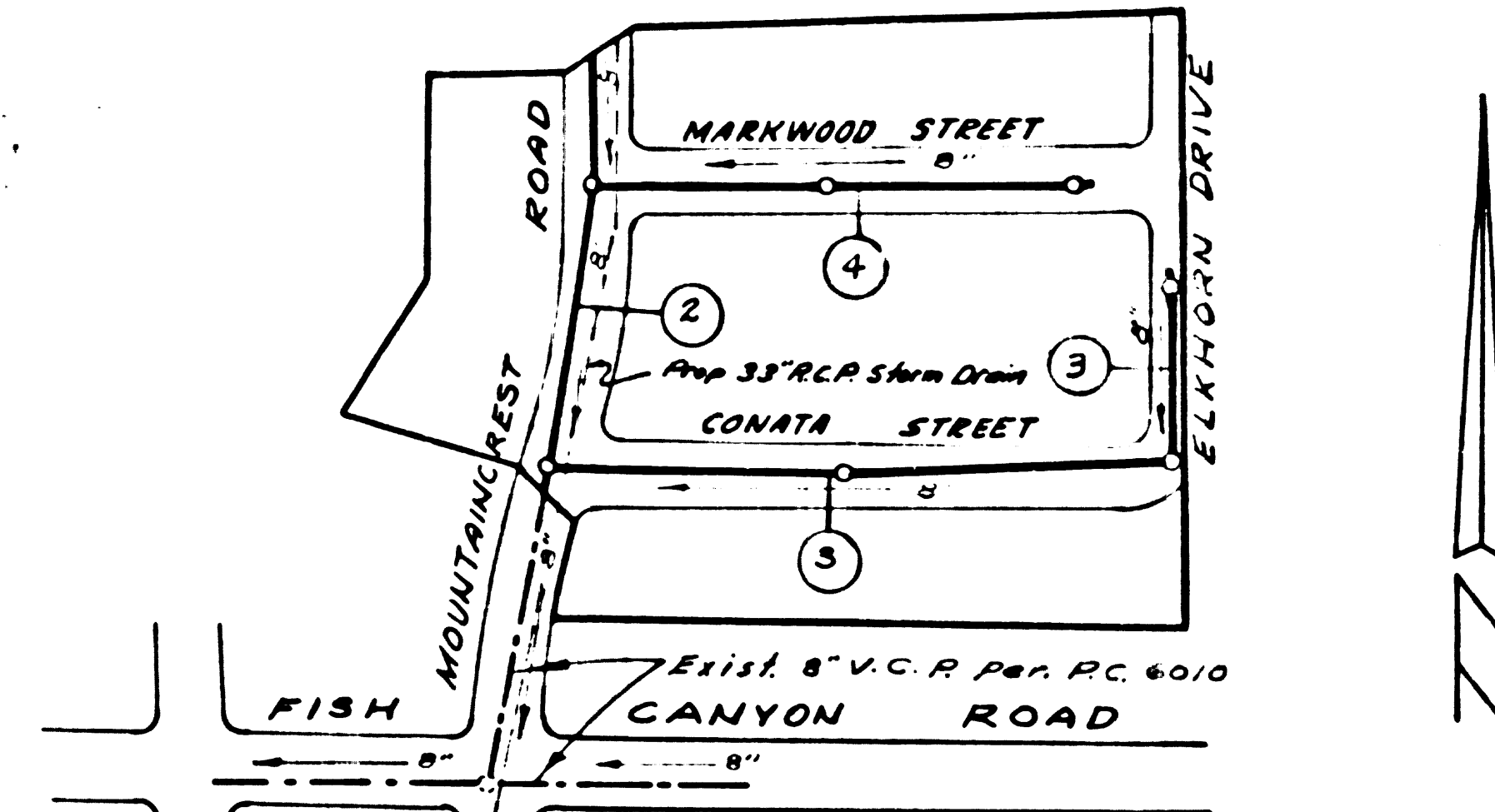
FOR LEGEND SEE PLAN NO. S-A-64

NOTE: GRADES TO WHICH THIS IMPROVEMENT IS TO BE CONSTRUCTED ARE SHOWN ON PLANS AND PROFILES. GRADE POINTS FOR TOP OF CURBS, CENTER LINE OF STREETS, OR CENTER LINE OF ALLEYS ARE SHOWN BY CIRCLES ON PROFILES. AT ALL POINTS BETWEEN DESIGNATED POINTS THE GRADE SHALL BE ESTABLISHED SO AS TO CONFORM TO A STRAIGHT LINE DRAWN BETWEEN SAID DESIGNATED POINTS. ELEVATIONS ARE IN FEET ABOVE U.S.C. & G.S. SEA LEVEL DATUM OF 1929. THIS DRAWING AND THE DATA HEREON ARE HEREBY MADE A PART OF THE SPECIFICATIONS. WORK SHALL BE CONSTRUCTED ACCORDING TO SPECIFICATIONS ON FILE IN THE OFFICE OF THE CITY ENGINEER AND SHALL BE PROSECUTED ONLY IN THE PRESENCE OF THE CITY ENGINEER. BEFORE WORK CAN BE STARTED THE CONTRACTOR MUST OBTAIN A PERMIT TO EXCAVATE IN CITY STREETS FROM THE L.A. COUNTY ROAD DEPT., DISTRICT OFFICE NO. 11, 1634 E. 9TH ST. DUARTE, SUFFICIENT TO COVER THE COST OF CONSTRUCTION INSPECTION AND RECORD PLANS. APPROVAL OF THIS PLAN BY THE CITY OF DUARTE DOES NOT CONSTITUTE A REPRESENTATION AS TO THE ACCURACY OF THE LOCATION OF OR THE EXISTENCE OR NON-EXISTENCE OF ANY UNDERGROUND UTILITY PIPE, OR STRUCTURE WITHIN THE LIMITS OF THIS PROJECT. THIS NOTE APPLIES TO ALL PAGES. IF WORK IS TO BE DONE IN A STATE HIGHWAY, A PERMIT MUST BE OBTAINED FROM THE STATE OF CALIFORNIA, DIVISION OF HIGHWAYS, 120 SOUTH SPRING STREET.

CITY OF DUARTE, CALIFORNIA

APPROVED, JOHN A. LAMBIE CITY ENGINEER APPROVED, *John R. Pappalardo* CHIEF ENGINEER
 CD. SAN. DIST. NO. 22
 BY: *Richard E. Keen* ASST. SANITATION ENGINEER BY: *W. P. Adams* OFFICE ENGINEER
 CHECKED BY: *R. K. Duda* 9-20-62
 OFFICE OF CITY ENGINEER REG. C. E. NO. 9406

SUBMITTED: *N. P. Bravender*
 SAN GABRIEL VALLEY REGIONAL ENGINEER



INDEX MAP
 TRACT No 27146
 P.C. 6207
 SCALE 1"=200'

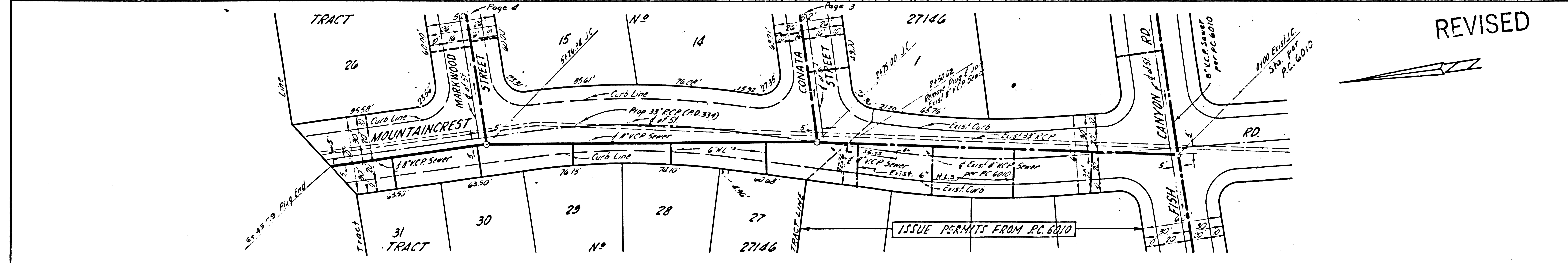
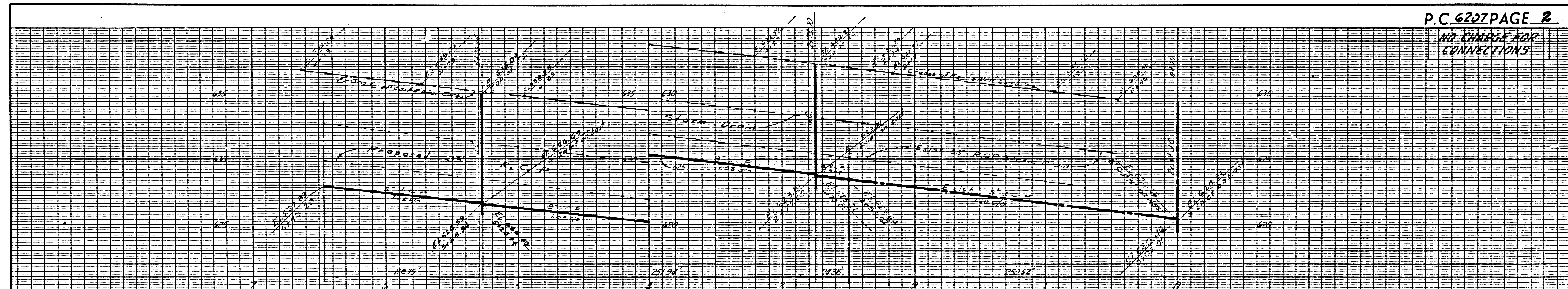
Notes: Numbers in circles indicate page numbers

NO CHARGE FOR CONNECTIONS
A. L. Albertson 9/62

REVISION NOTE
 Extended M.L. from sta. 4+72.48 to sta. 5+32.16 Section B, and added Section A, Page 3.
 APPROVED: *N. P. Bravender* 1 18 63
 DATE

P.C. 6207 PAGE 2

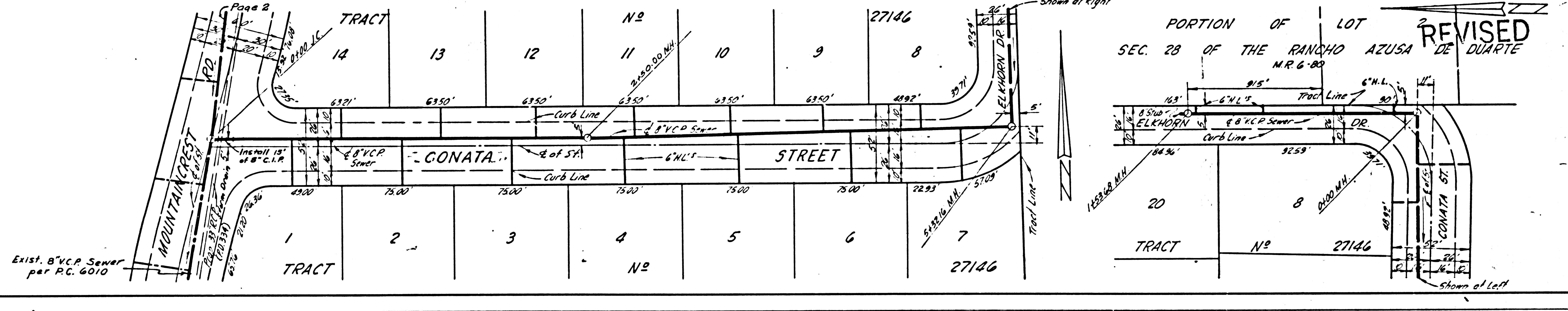
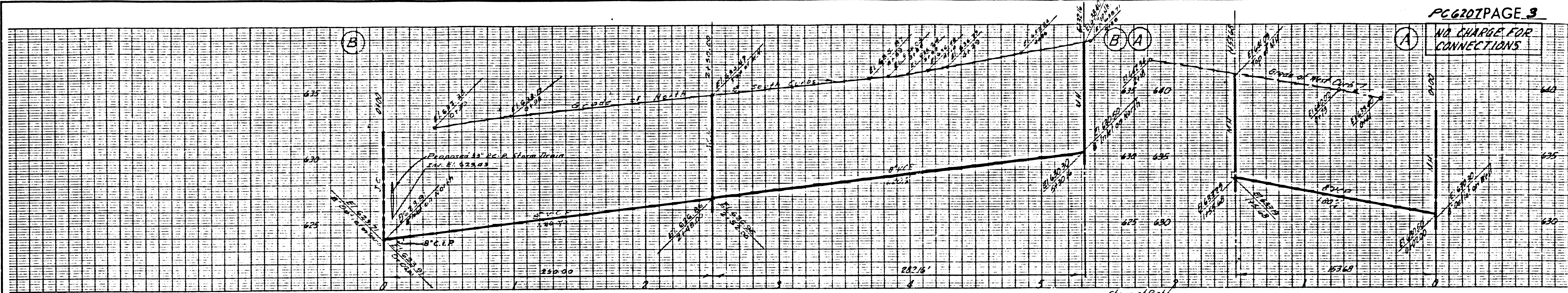
NO CHARGE FOR CONNECTIONS



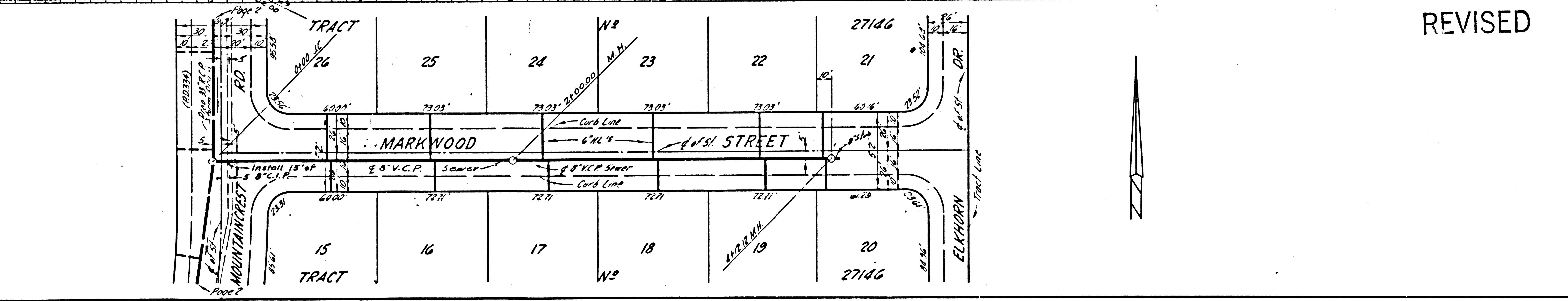
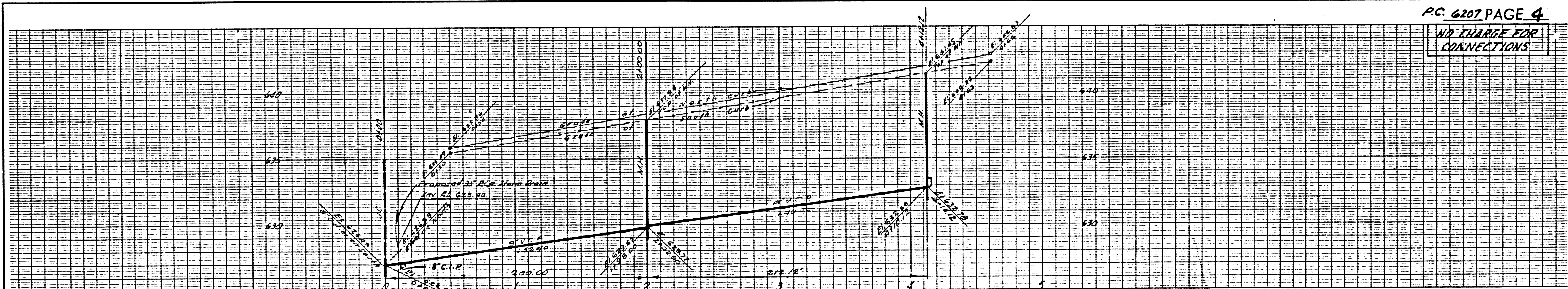
REVISED

ISSUE PERMITS FROM PC 6810

NO CHARGE FOR CONNECTIONS



NO CHARGE FOR CONNECTIONS



REVISED