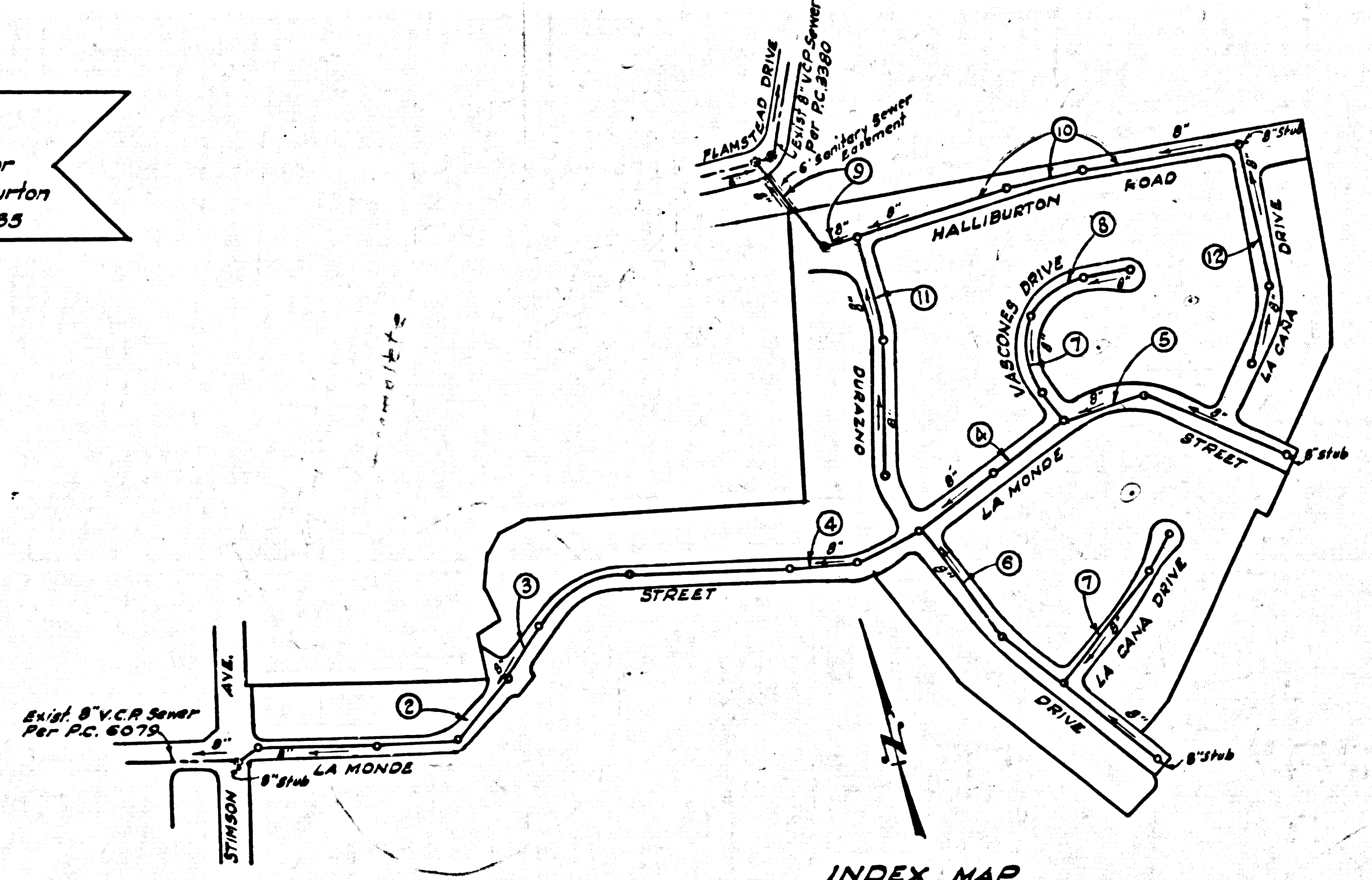


BENCH MARK:
 N 5.6.1623, Elev. 403.911
 Co. Sur. Mon. in well 14' down at or
 near E. Int. of Hacienda Blvd. & Halliburton
 (Formerly Puente Rd.) October 1955



INDEX MAP
 Scale: 1"=300'
 TRACT NO 27171
 P.C. 6209

PUENTE BLDG. DIST. NO. 2

PROFILE ALIGNMENT AND GRADE OF P.C. 6209
 SANITARY SEWERS PAGE 1
 TO BE CONSTRUCTED IN J.M. 0358.14

TRACT NO. 27171
 PRIVATE CONTRACT NO. 6209

W.S. 98
 6 SHEETS; 12 PAGES
 SCALE: VERT. 1"=5' OCTOBER 1962
 HORIZ. 1"=50'
 PREPARED IN THE OFFICES OF
AMCO ENGINEERS
 8544 W. OLYMPIC BLVD., B.H.
 J. M. Arango 3-13-62
 J. GEO. ARAUJO REG. C. E. NO. 11487
 FOR LEGEND SEE PLAN NO. S-A-64

32819

- NOTES:
1. PROVIDE STAKES ON THE PROPERTY LINE OR PROPERTY LINES PRODUCED AT RIGHT ANGLES TO THE SEWER LINE AT THE CENTER LINE OF EACH MANHOLE.
 2. NO REPRESENTATIVE OF THE COUNTY ENGINEER WILL SURVEY OR LAY OUT ANY PORTION OF THE WORK.
 3. THE OWNER OR HIS AUTHORIZED REPRESENTATIVE SHALL FURNISH THE COUNTY ENGINEER WITH GRADE SHEETS AND STATIONING FOR ALL HOUSE LATERALS AND Y BRANCHES AND SHALL PROVIDE STAKES FOR THEM AT THEIR PROPER LOCATIONS WITH STATIONING PLAINLY MARKED. ANY CHANGE IN LOCATION SHALL BE REQUESTED IN WRITING BY THE OWNER OR HIS REPRESENTATIVE.
 4. THE PRIVATE ENGINEER SHALL FURNISH THE HOUSE LATERAL DEPTH AT THE PROPERTY LINE BELOW THE TOP OF CURB ELEVATION FOR EACH HOUSE LATERAL ON THE GRADE SHEET.
 5. NO REVISIONS SHALL BE MADE IN THESE PLANS WITHOUT THE APPROVAL OF THE COUNTY ENGINEER.
 6. USE STANDARD MANHOLE FRAMES AND COVERS, S-117.
 7. USE EXTRA STRENGTH PIPE, ALL PIPE STANDARD DEPTH, EXCEPT AS NOTED.
 8. USE MECHANICAL COMPRESSION JOINTS FOR ALL V.C.P. PER SPECIFICATIONS SECTIONS 36, 48 AND 49.
 9. RESURFACE ALL TRENCH WITHIN PAVED AREA TO MEET L.A. COUNTY ROAD DEPT. OR CALIF. STATE HIGHWAY REQUIREMENTS IN ACCORDANCE WITH PERMITS.
 10. ENCASE FOUR FEET OF SEWER AT POINTS OF INTERFERENCE WITH POLES, CASE III, S-172.
 11. HOUSE LATERALS TO BE CONSTRUCTED WITH INVERTS AT PROPERTY LINE, 6 FEET BELOW CURB GRADE.
 12. MANHOLES SHALL BE BRICK SEWER STRUCTURES PER S-106, PRECAST CONCRETE MANHOLES PER S-115 OR S-173 MAY BE USED AS AN ALTERNATE, IN LOCATIONS APPROVED BY THE COUNTY ENGINEER.
 13. FOR ALLOWABLE LEAKAGE TEST USE FORMULA NO. 1, SPECS. SEC. 84.
 14. MANHOLE TOPS IN UNIMPROVED RIGHTS-OF-WAY TO BE SIX INCHES ABOVE FINISHED GRADE.
 15. THE CONTRACTOR SHALL NOTIFY THE CONSTRUCTION DIVISION BY TELEPHONE, MADISON 9-4171, EXT. 5151 AT LEAST TWENTY-FOUR HOURS BEFORE STARTING ANY WORK UNDER THIS CONTRACT.
 16. STANDARD SPECIFICATIONS DATED MAY 25, 1962 APPLY IN THE CONSTRUCTION OF THIS PROJECT.
 17. SEWERS IN FILLED GROUND - COMPACTION.
 - a) NO CONSTRUCTION WILL BE PERMITTED IN FILLED AREAS UNLESS ACCEPTABLE CERTIFICATION IS SUBMITTED TO THE CONSTRUCTION DIVISION OF THE COUNTY ENGINEERS DEPARTMENT THAT RELATIVE COMPACTION IS GREATER THAN 80%.
 - b) IF COMPACTION IS LESS THAN 90% THE SEWER SHALL BE GRADED PER S-116 OR HAVE A SPECIAL BASE COURSE PER S-175, CASE III. SPECIAL MANHOLE BASES MUST BE INSTALLED PER S-128 AS INDICATED ON THE PLANS.
 - c) IF COMPACTION IS GREATER THAN 90% CRADLING AND SPECIAL MANHOLE BASES ARE NOT REQUIRED.
 18. ALL STATE AND LOCAL TRENCH SAFETY ORDERS WILL BE RIGIDLY ENFORCED.

NOTE:
 GRADES TO WHICH THIS IMPROVEMENT IS TO BE CONSTRUCTED ARE SHOWN ON PLANS AND PROFILES. GRADE POINTS FOR TOP OF CURB, CENTER LINE OF STREETS, OR CENTER LINE OF ALLEYS ARE SHOWN BY CIRCLES ON PROFILES. AT ALL POINTS BETWEEN DESIGNATED POINTS THE GRADE SHALL BE ESTABLISHED SO AS TO CONFORM TO A STRAIGHT LINE DRAWN BETWEEN SAID DESIGNATED POINTS.
 ELEVATIONS ARE IN FEET ABOVE U.S.C. & G.S. SEA LEVEL DATUM OF 1929.
 THIS DRAWING AND THE DATA HEREON ARE HEREBY MADE A PART OF THE SPECIFICATIONS.
 WORK SHALL BE CONSTRUCTED ACCORDING TO SPECIFICATIONS ON FILE IN THE OFFICE OF THE COUNTY ENGINEER AND SHALL BE PROSECUTED ONLY IN THE PRESENCE OF THE COUNTY ENGINEER.
 BEFORE WORK CAN BE STARTED THE CONTRACTOR MUST OBTAIN A PERMIT TO EXCAVATE IN COUNTY STREETS FROM THE L.A. COUNTY ROAD DEPT., DISTRICT OFFICE NO. 10 AND PAY A FEE TO THE COUNTY ENGINEER, ROOM 300, L.A. COUNTY BLDG. 102 W. EAST L.A., SUFFICIENT TO COVER THE COST OF CONSTRUCTION INSPECTION AND RECORD PLANS.
 APPROVAL OF THIS PLAN BY THE COUNTY OF LOS ANGELES DOES NOT CONSTITUTE A REPRESENTATION AS TO THE ACCURACY OF THE LOCATION OF OR THE EXISTENCE OR NON-EXISTENCE OF ANY UNDERGROUND UTILITY PIPE, OR STRUCTURE WITHIN THE LIMITS OF THIS PROJECT. THIS NOTE APPLIES TO ALL PAGES.
 IF WORK IS TO BE DONE IN A STATE HIGHWAY, A PERMIT MUST BE OBTAINED FROM THE STATE OF CALIFORNIA, DIVISION OF HIGHWAYS, 128 SOUTH SPRING STREET.

COUNTY OF LOS ANGELES, CALIFORNIA

APPROVED, JOHN A. LAMBIE, COUNTY ENGINEER APPROVED J.D. PARKHURST CHIEF ENGINEER
 CO. SAN. DIST. NO. 21
 BY *[Signature]* ASST. SANITATION ENGINEER BY *[Signature]* OFFICE ENGINEER
 CHECKED BY *[Signature]* 10-22-62
 OFFICE OF COUNTY ENGINEER, Rm. C. E. NO. 10283
 SUBMITTED *[Signature]* R.E. NO. 11636 10-18-62
 SAN DIMAS REGIONAL OFFICE

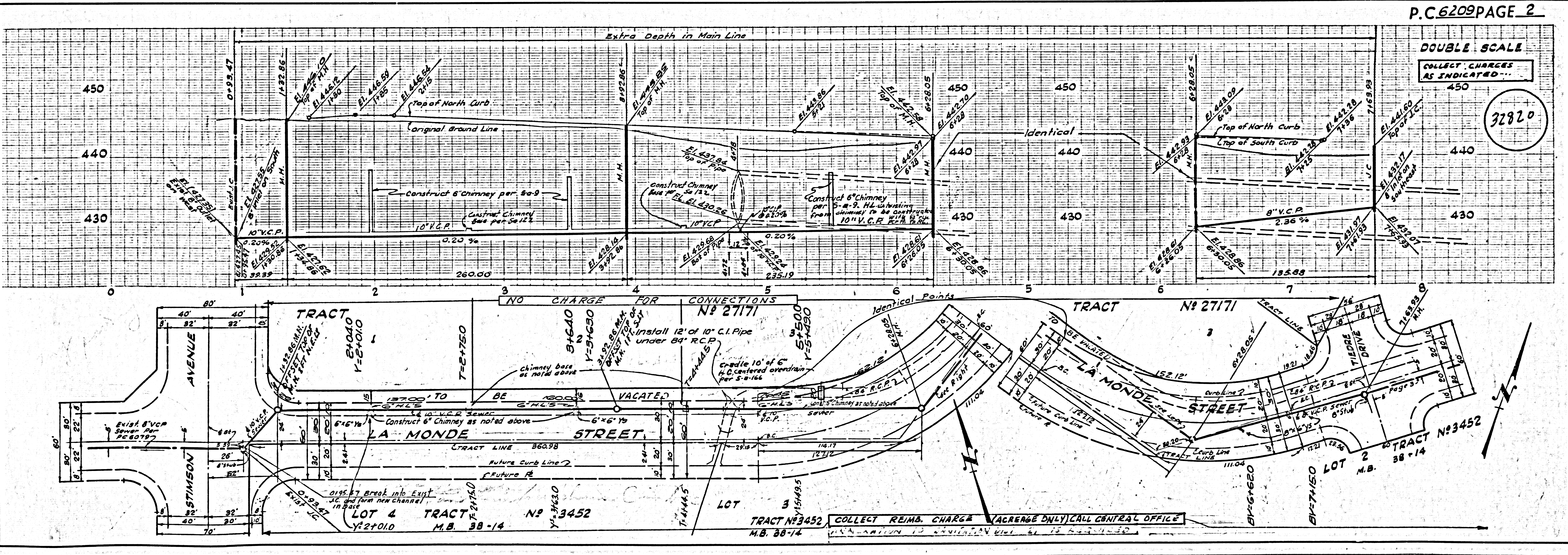
REVISION:
 Station 1+82.86 Top of manhole offset 0.75 foot north-south
 Station 3+85.86 Top of manhole offset 0.75 foot south-south
 APPROVED *[Signature]* 7-26-63
 J.G. ARAUJO

- NOTES CONT.
19. ALL HOUSE LATERALS SHALL BE CONSTRUCTED IN A STRAIGHT ALIGNMENT AT RIGHT ANGLES FROM THE MAIN LINE SEWER EXCEPT AS SHOWN ON THE PLANS. HOUSE LATERALS FROM CHIMNEYS SHALL NOT HAVE AN ANGLE LESS THAN 45° WITH THE MAIN LINE SEWER.
 20. WHEREVER GROUND WATER IS ENCOUNTERED DURING THE CONSTRUCTION OF THE SEWERS, THE V.C.P. JOINTS SHALL BE OF JOINT COMPOUND PER SPECS. SECS. 33 & 48 OR MECHANICAL COMPRESSION JOINTS PER SPECS. SEC. 36.
 21. IF A POWER POLE IS WITHIN THIRTY FEET OF THE SEWER THE SEWER SHALL BE ENCASED PER S-172 CASE III TWO FEET ON EITHER SIDE FROM THE POINT OF INTERFERENCE.
 22. IF DURING THE COURSE OF CONSTRUCTION IT IS DETERMINED THAT THERE IS LESS THAN FOUR FEET OF COVER OVER THE TOP OF A MAIN LINE OR HOUSE LATERAL V.C.P. SEWER WHICH IS NOT INDICATED ON THE PLANS, THIS PIPE SHALL BE ENCASED PER S-172 CASE III UNLESS OTHERWISE APPROVED BY THE COUNTY ENGINEER.

DOUBLE SCALE
 VERTICALLY

COLLECT CHARGES
 AS INDICATED
[Signature]

NO CONNECTIONS FOR THE DISPOSAL OF INDUSTRIAL WASTES SHALL BE MADE TO SEWERS SHOWN ON THESE DRAWINGS WITHOUT WRITTEN PERMISSION FROM THE CHIEF ENGINEER AND GENERAL MANAGER OF THE COUNTY SANITATION DISTRICTS.

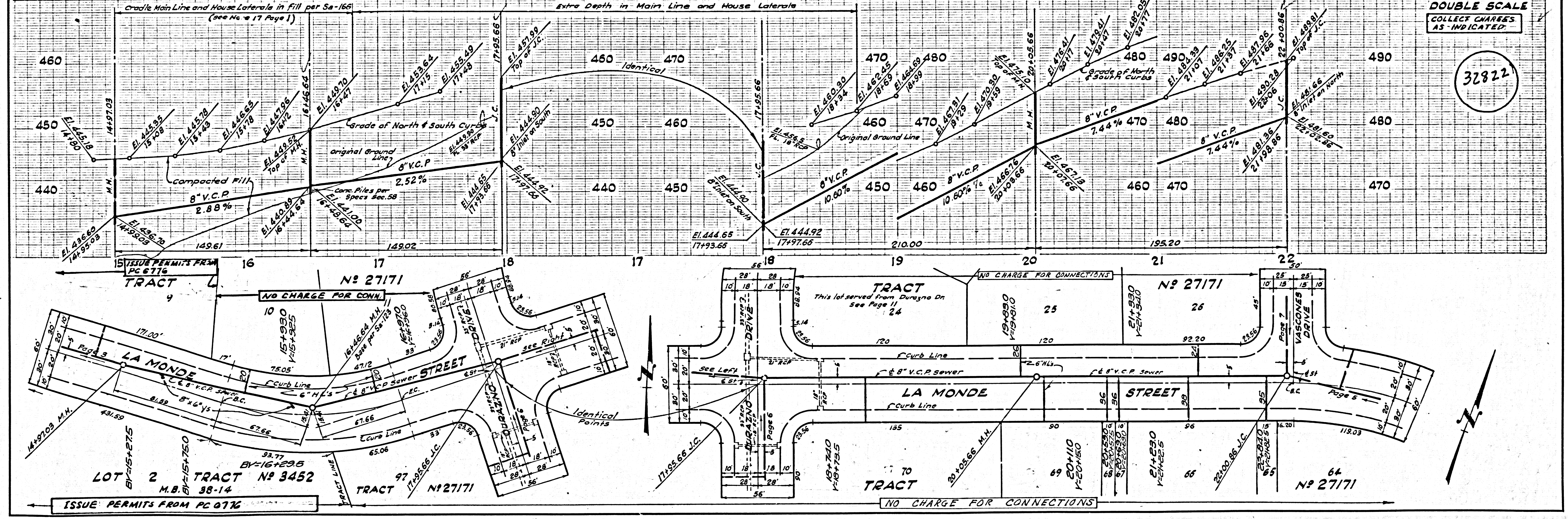
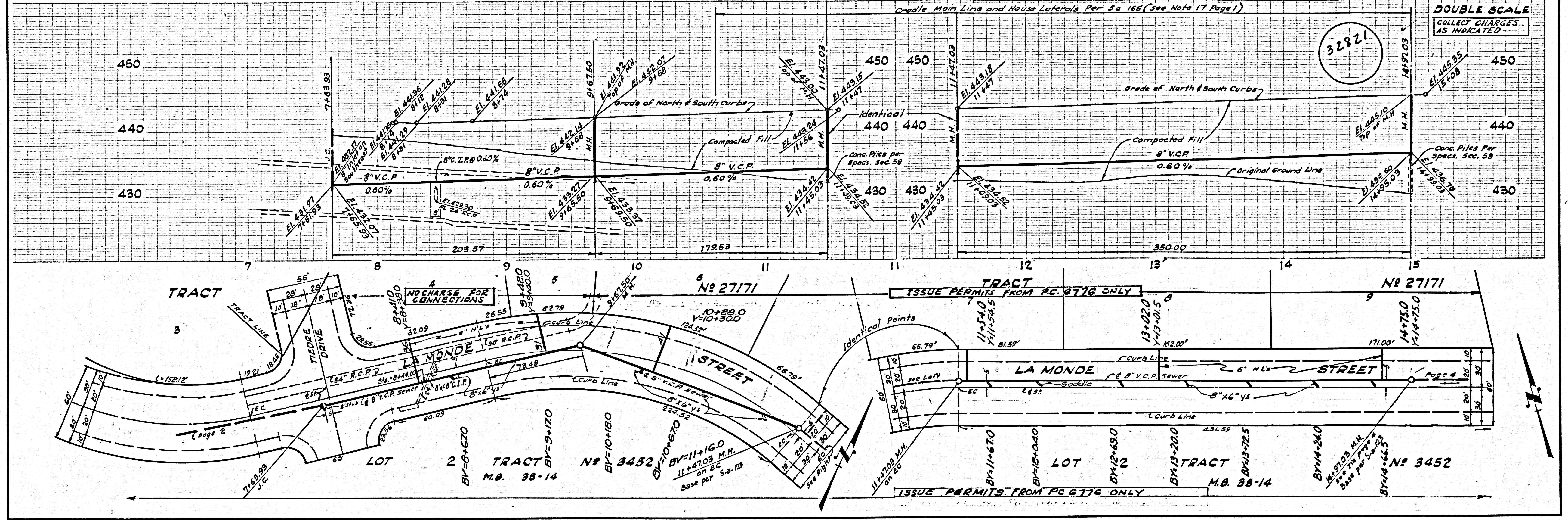


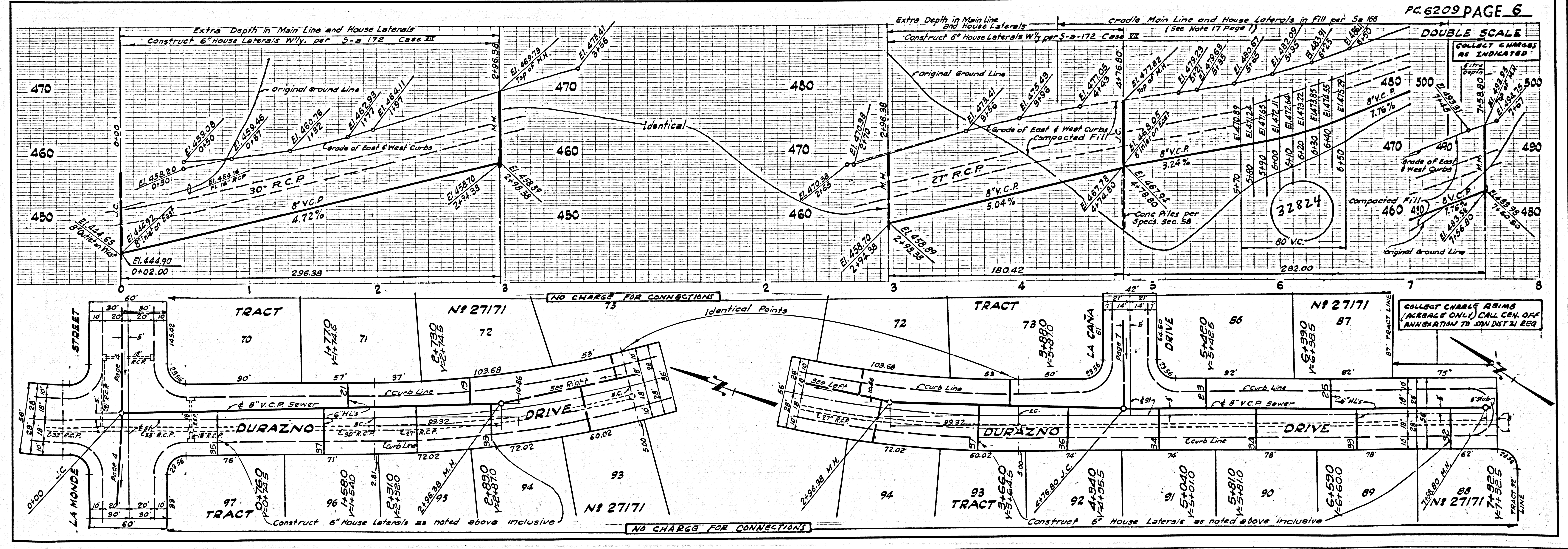
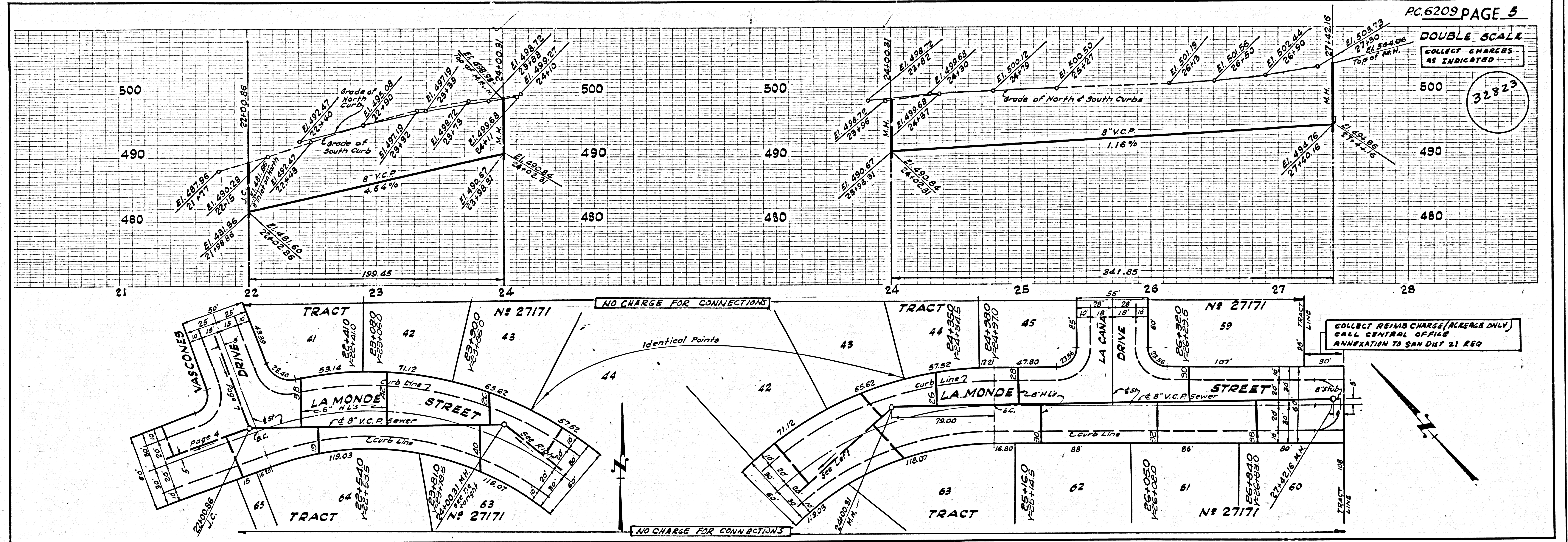
P.C. 6209 PAGE 2

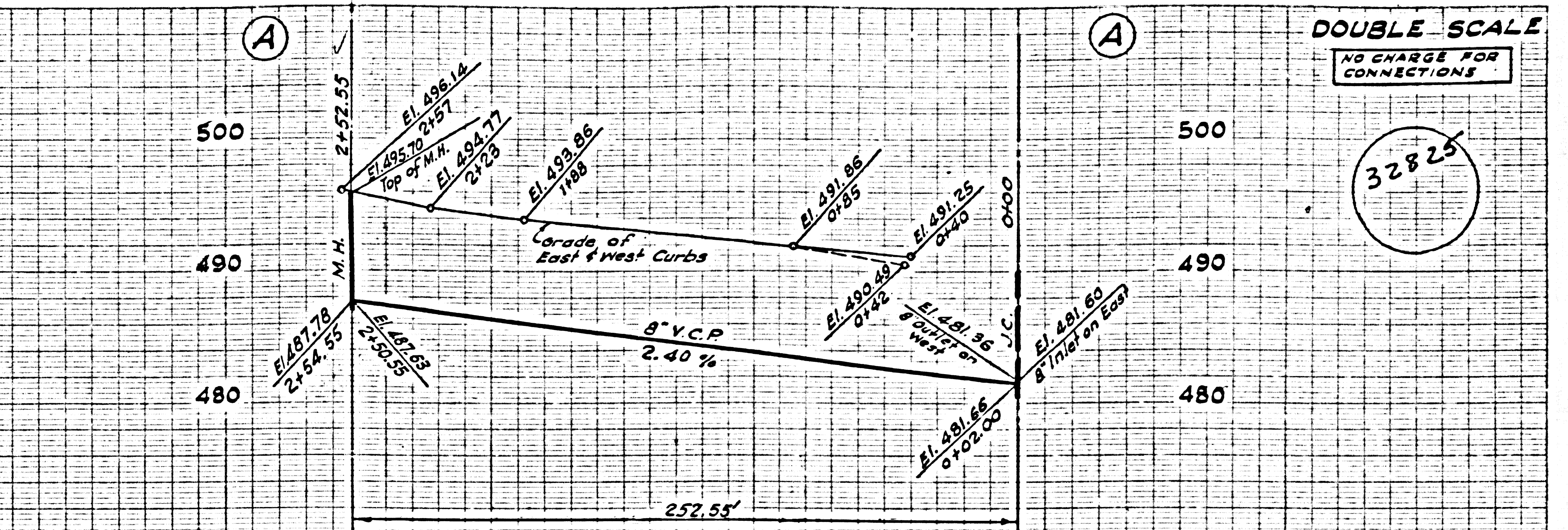
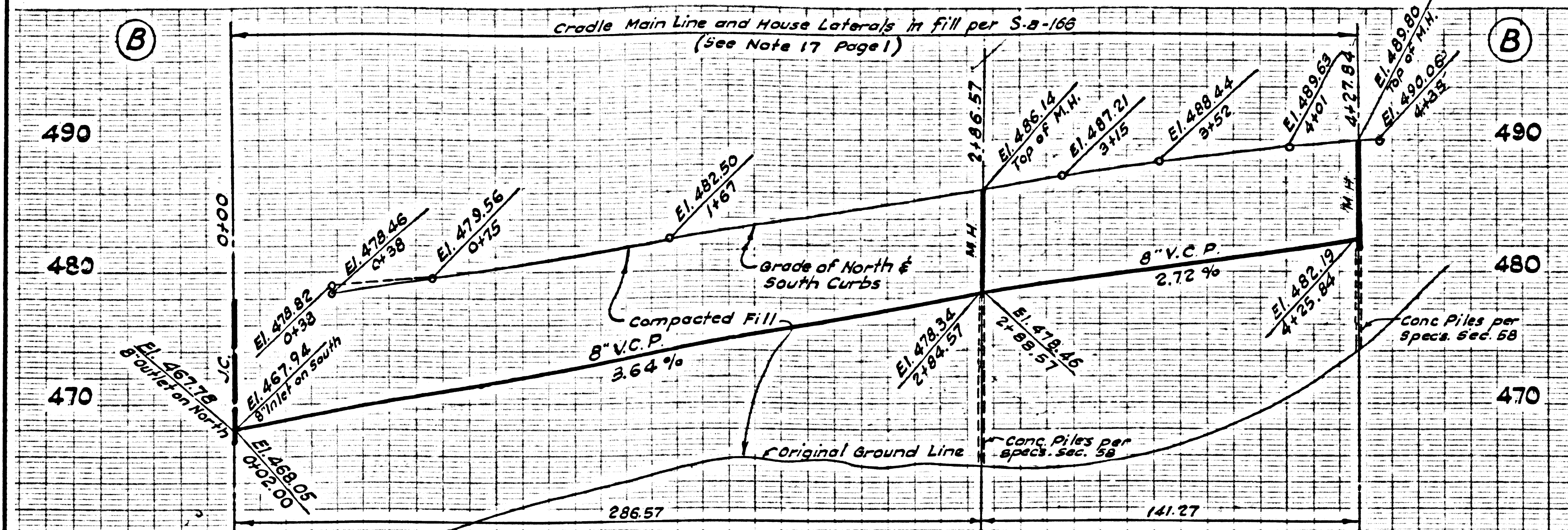
DOUBLE SCALE
 COLLECT CHARGES
 AS INDICATED

32820

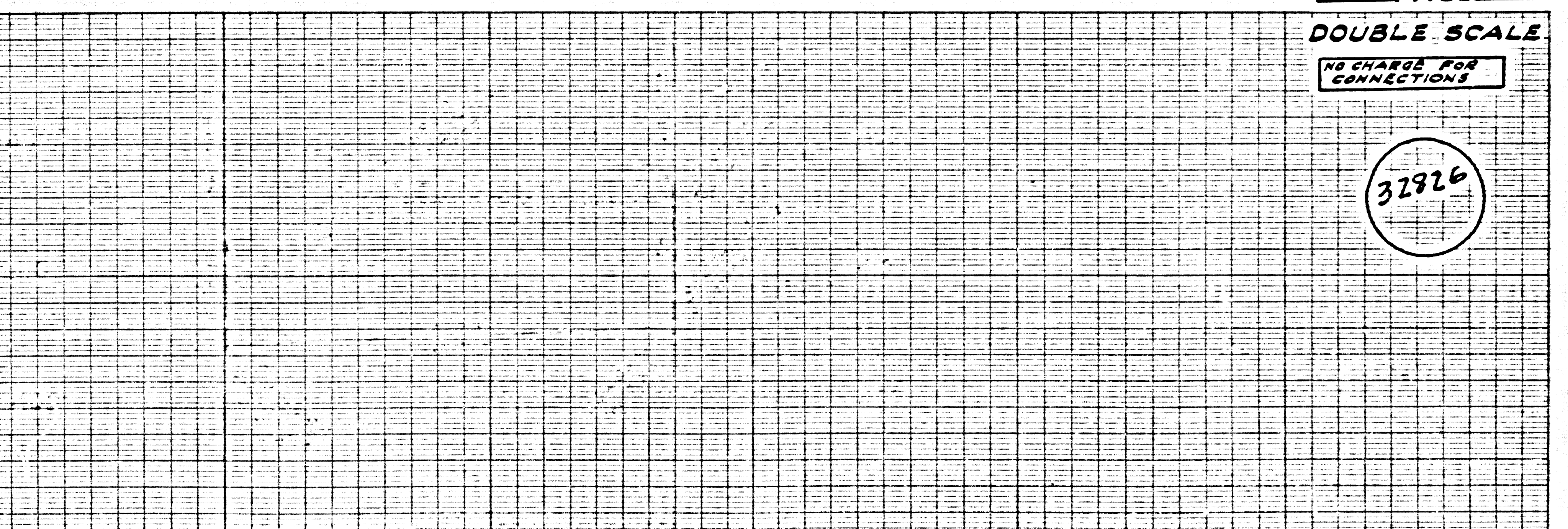
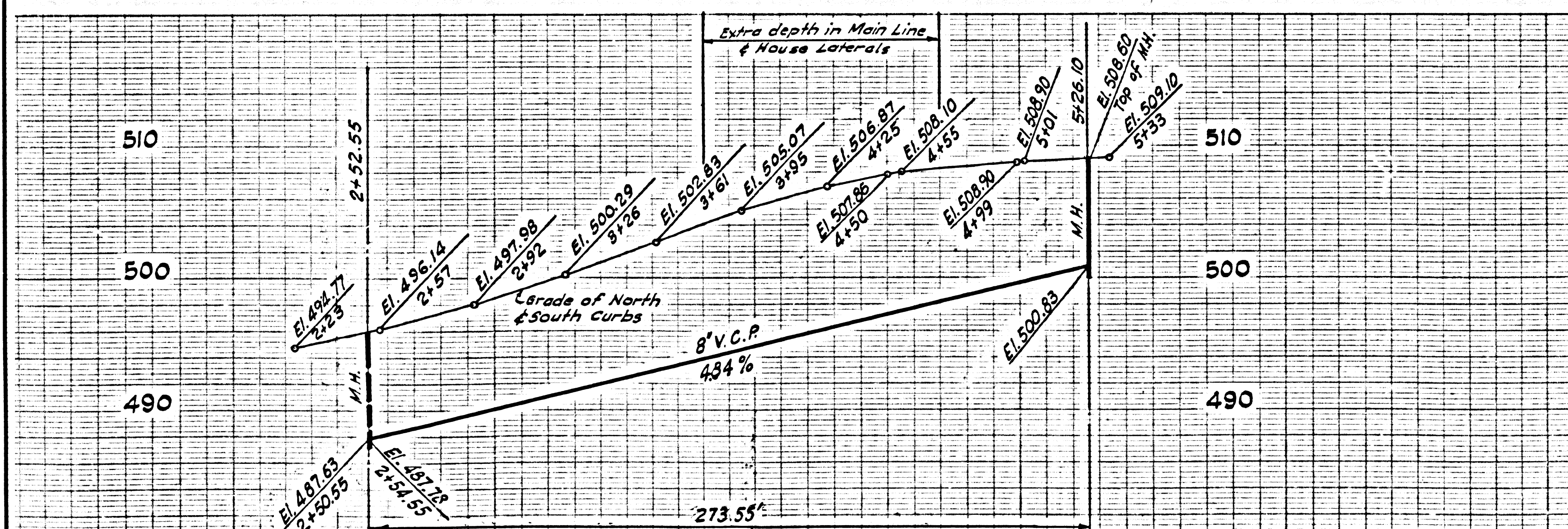
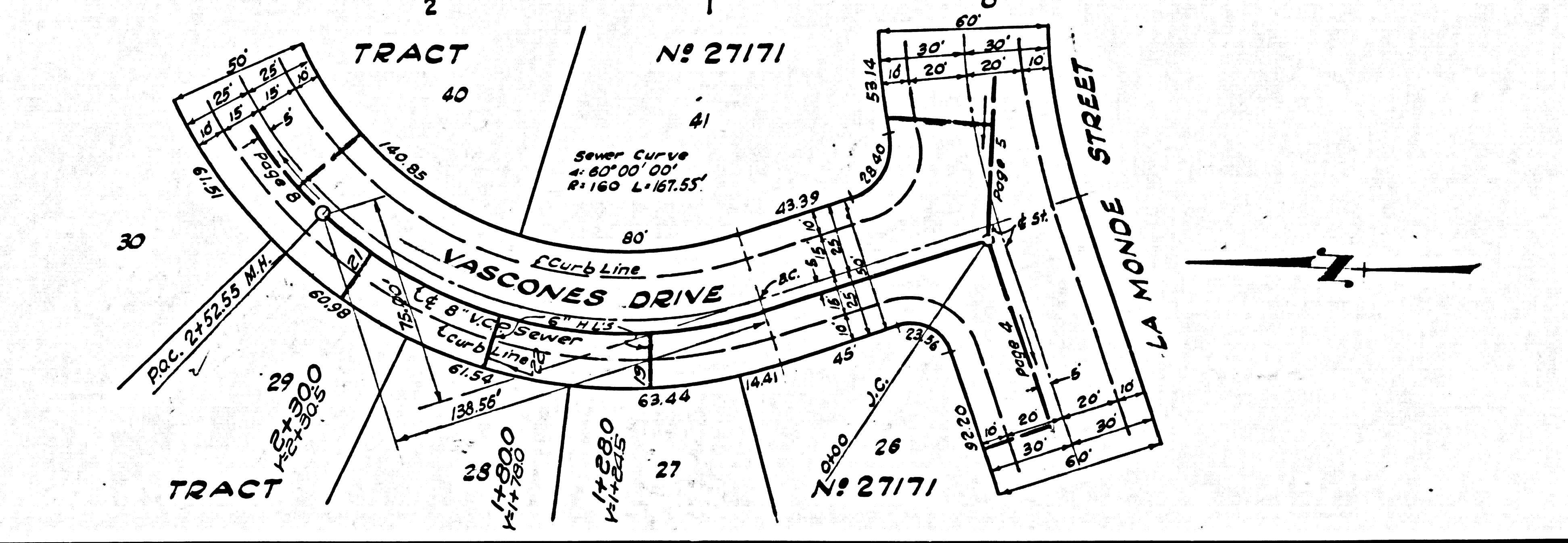
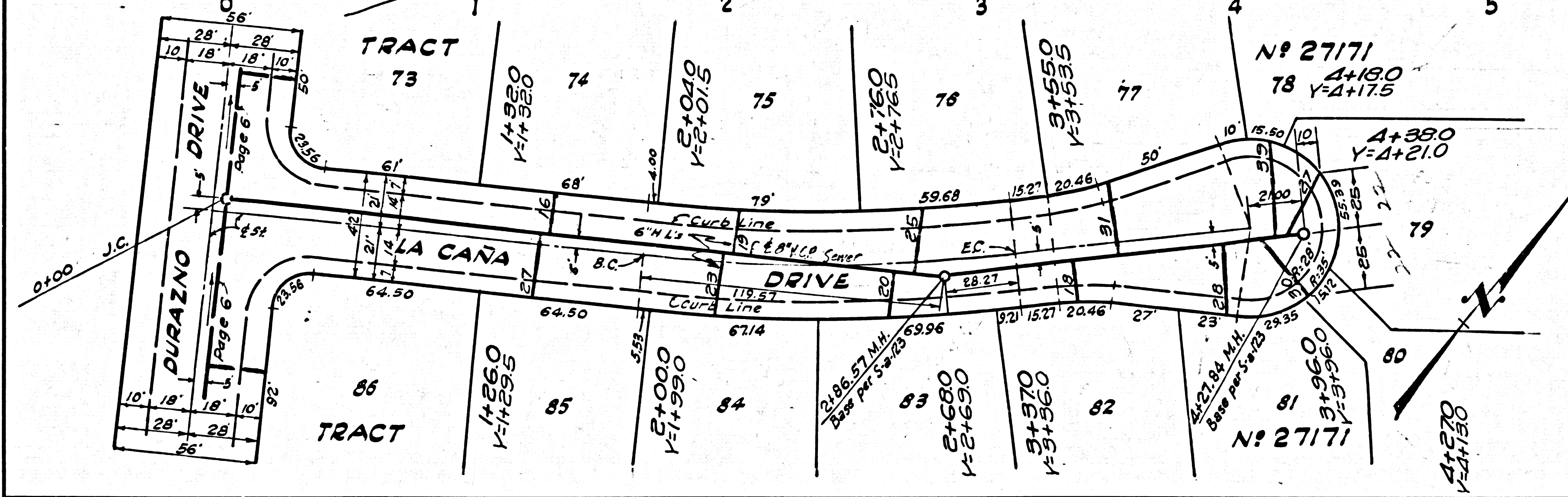
COLLECT REIMB. CHARGE (ACREAGE ONLY) CALL CENTRAL OFFICE



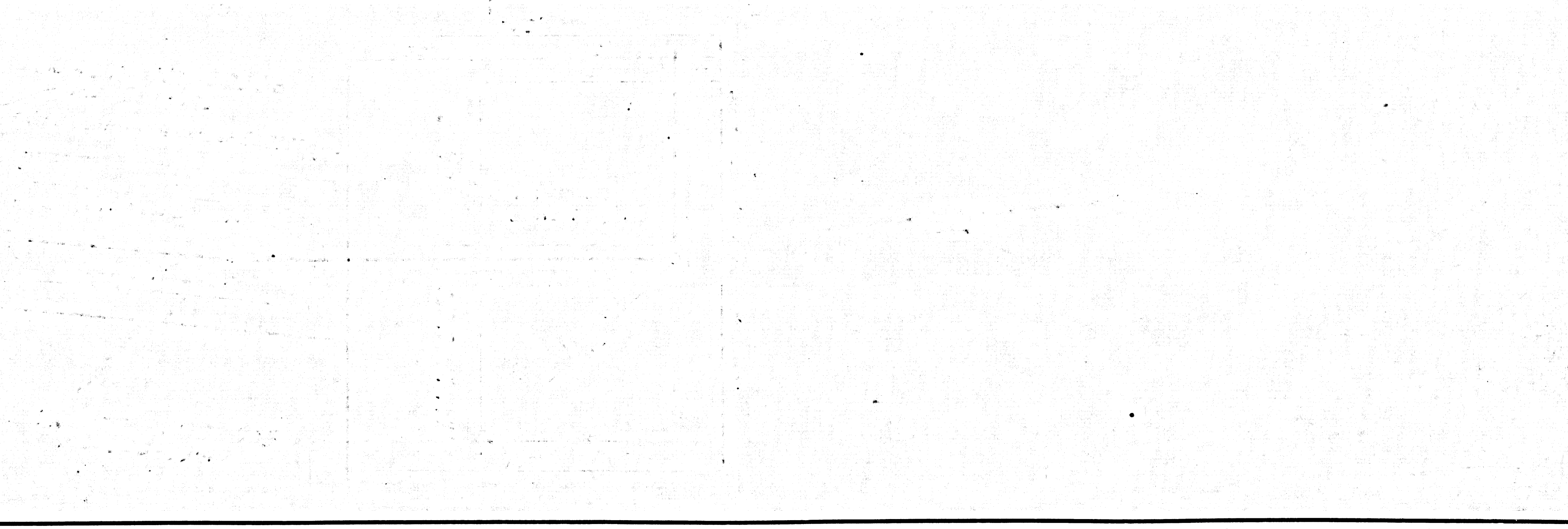
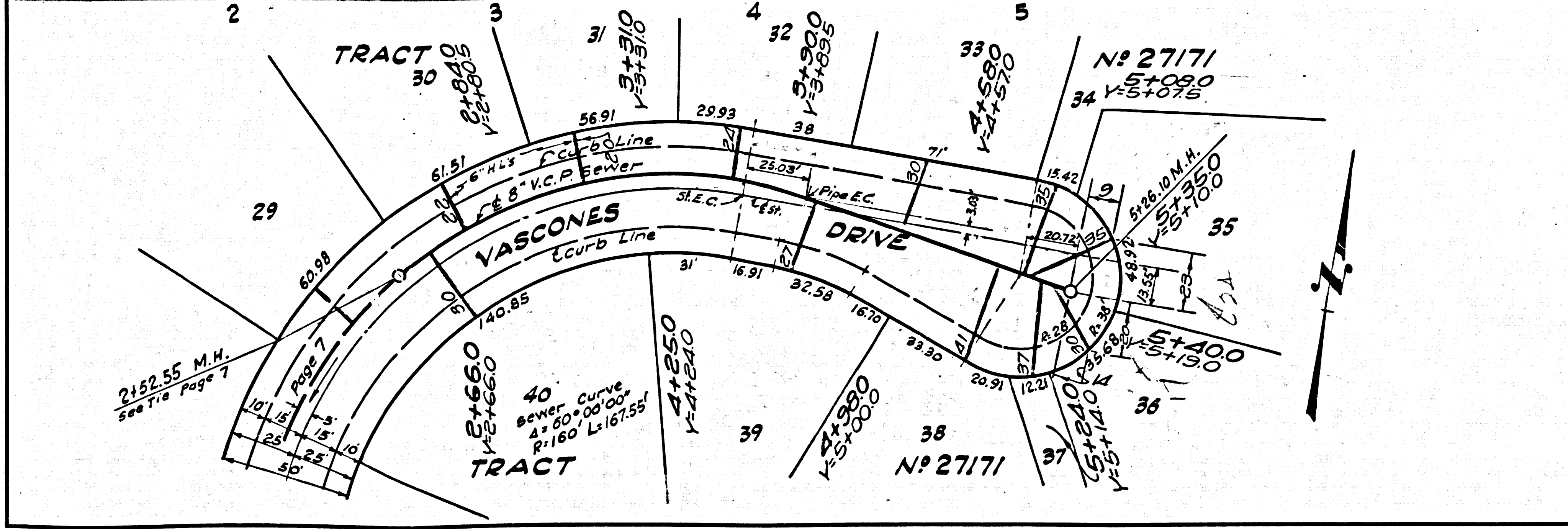




DOUBLE SCALE
NO CHARGE FOR CONNECTIONS
32825

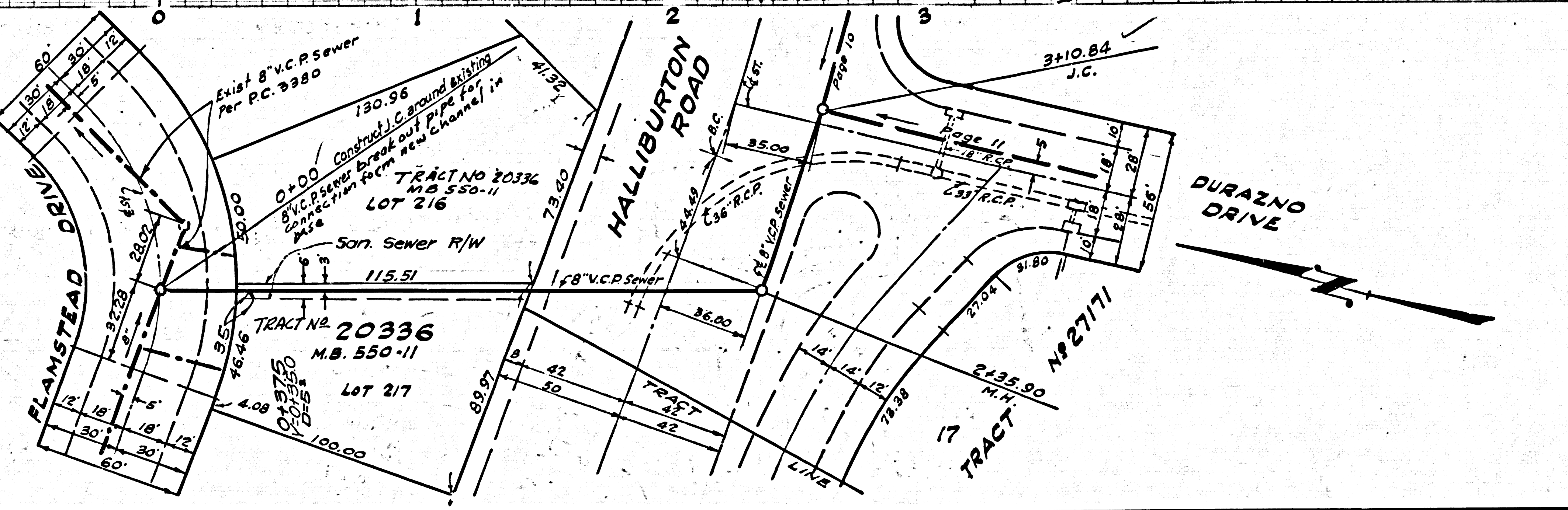
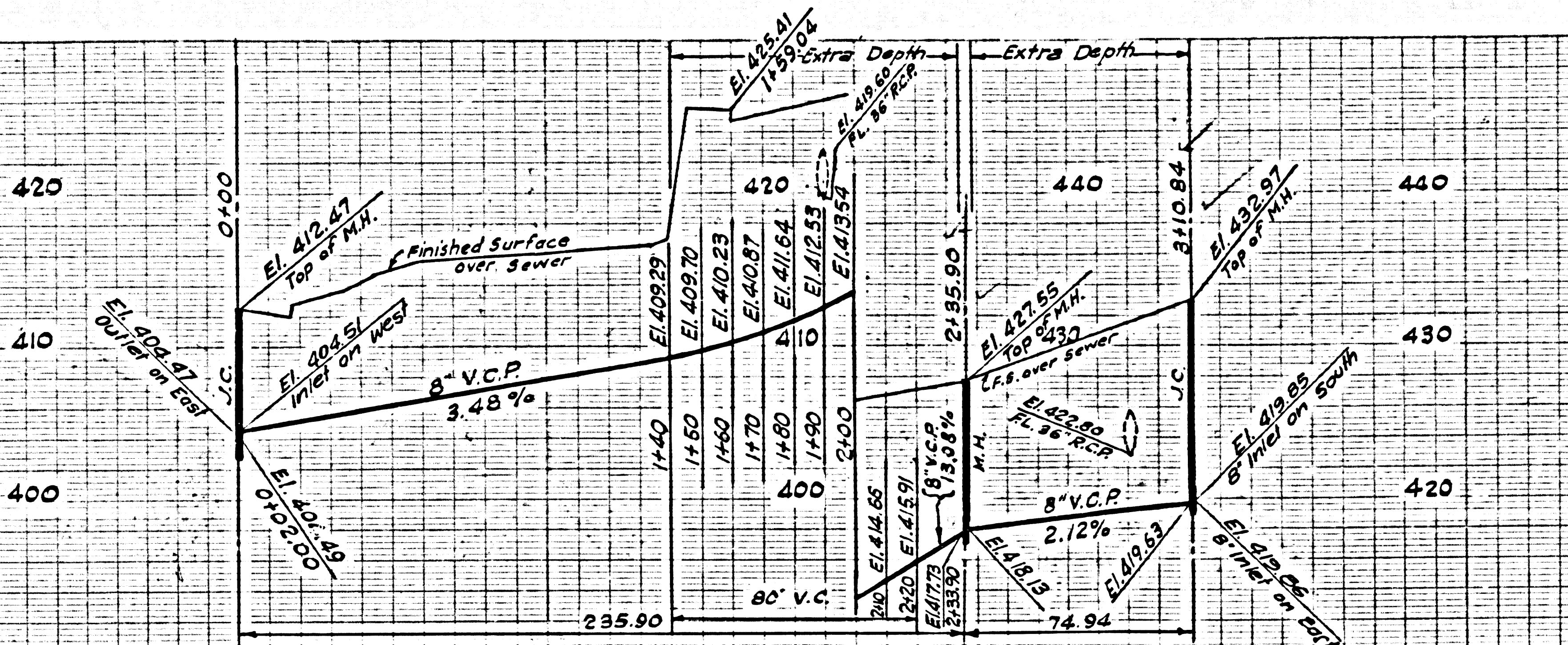


DOUBLE SCALE
NO CHARGE FOR CONNECTIONS
32826



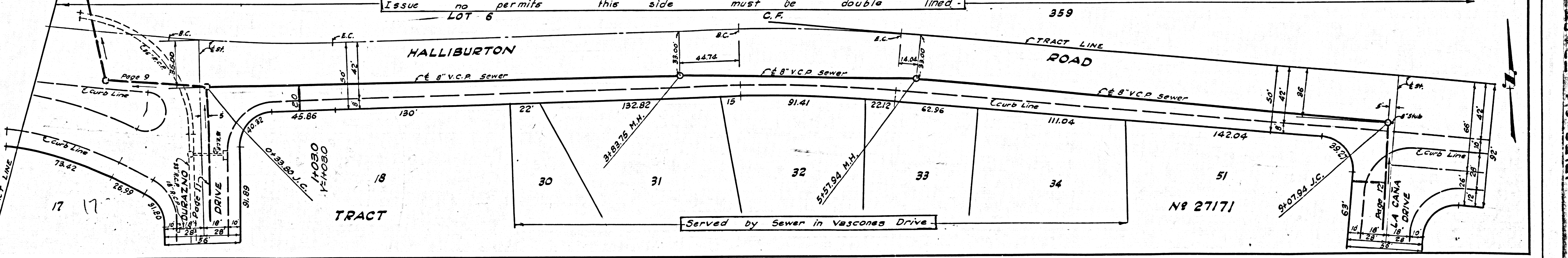
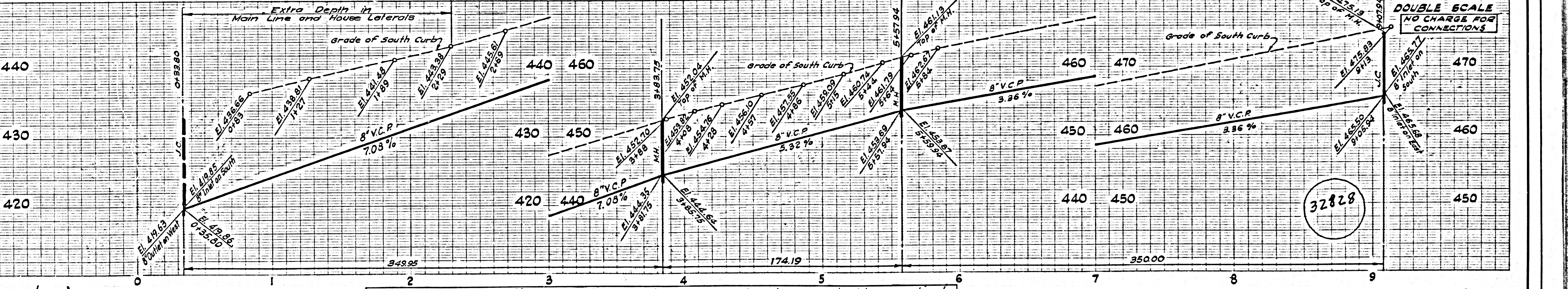
DOUBLE SCALE
NO CHARGE FOR
CONNECTIONS

32827



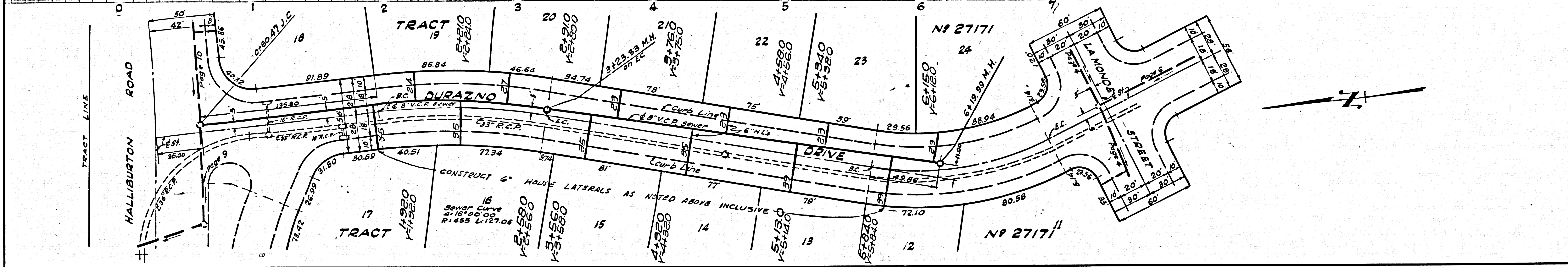
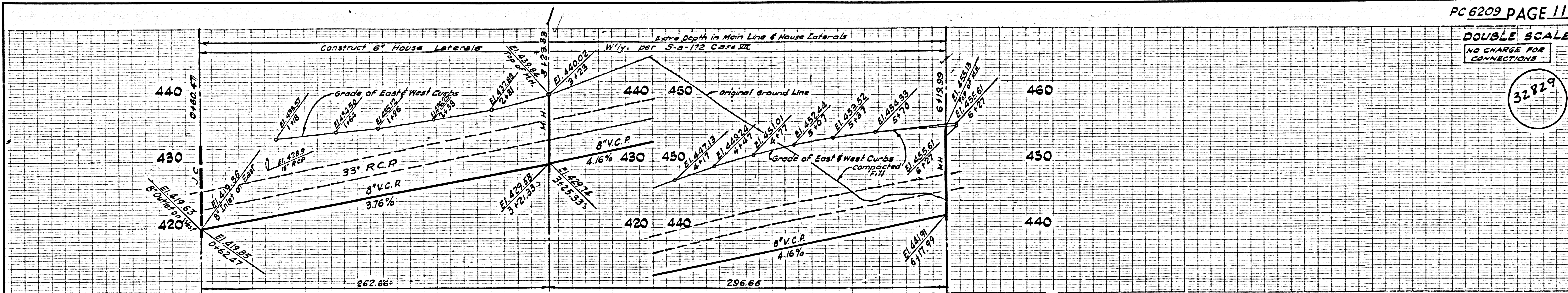
DOUBLE SCALE
NO CHARGE FOR
CONNECTIONS

32828



DOUBLE SCALE
NO CHARGE FOR CONNECTIONS

32829



DOUBLE SCALE
NO CHARGE FOR CONNECTIONS

32830

