

ARTESIA BLDG. DIST. NO. 4.09

PROFILE ALIGNMENT AND GRADE OF P.C. 6210

SANITARY SEWERS PAGE 1

TO BE CONSTRUCTED IN

TRACT No 27103

PRIVATE CONTRACT NO. G210

W.S. 31

2 SHEETS; 3 PAGES

32367

SCALE: VERT. 1"=4' April 1962

HORIZ. 1"=40'

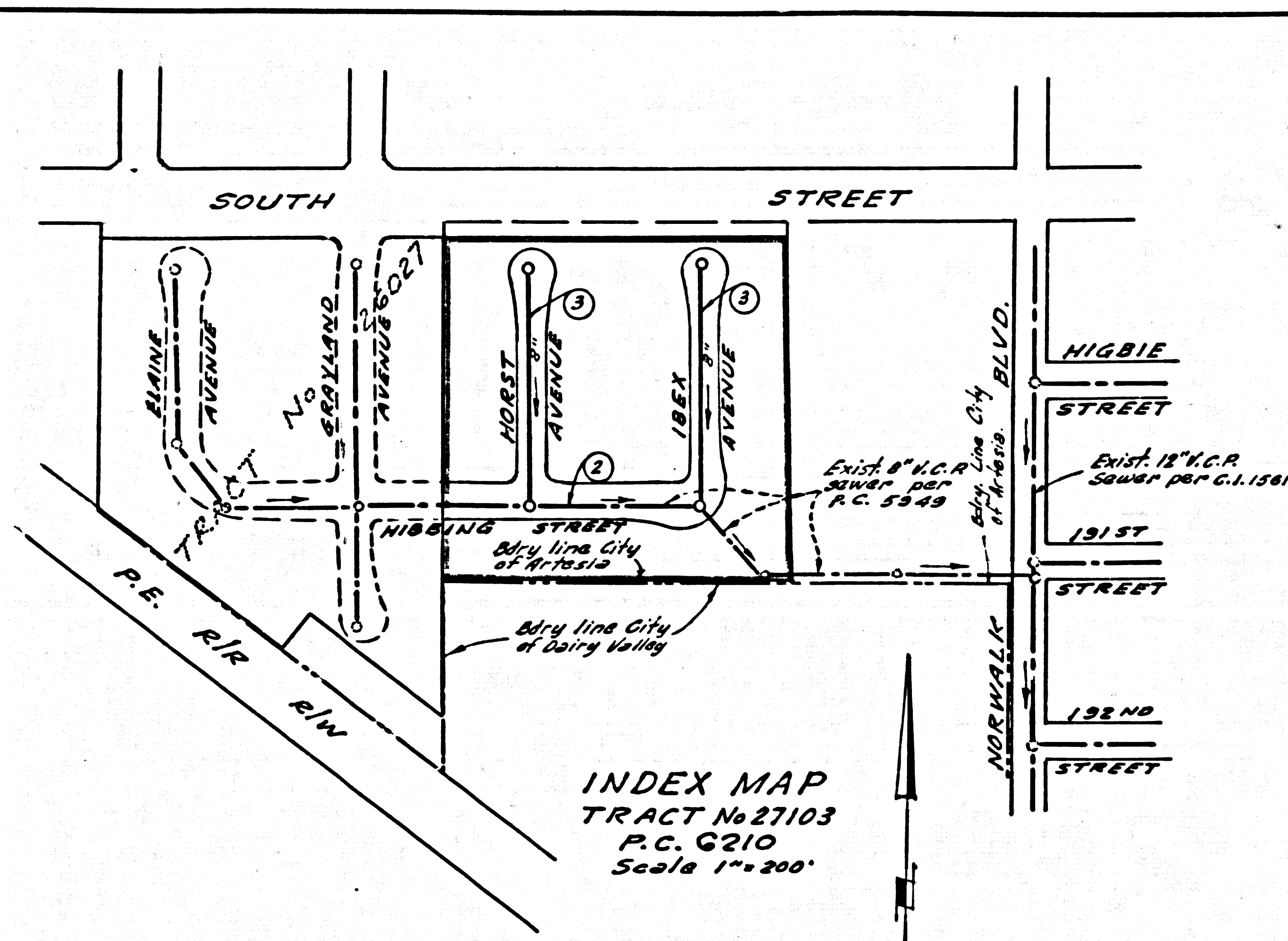
PREPARED IN THE OFFICES OF

BARCLAY-PEARSON Co., INC.

By: *Edward F. Pearson*

REG. C. E. NO. 9783

FOR LEGEND SEE PLAN NO. S-A-64



INDEX MAP
TRACT No 27103
P.C. 6210
Scale 1"=200'

Note: Permits for Lots numbered 8 & 9
to be issued under P.C. 5949

BENCH MARK
S.Y. 3410 ELEV. 45.783
L & T. IN N.-E. COR. CONC. STEP TO
HOUSE# 12 202 SOUTH STREET AT S.-E. COR.
NORWALK BLVD & SOUTH STREET.

ARTESIA QUAD. 1956.

NO CHARGE
FOR CONNECTIONS

Edward F. Pearson 5-17-62

NOTES:

1. PROVIDE STAKES ON THE PROPERTY LINE OR PROPERTY LINES PRODUCED AT RIGHT ANGLES TO THE SEWER LINE AT THE CENTER LINE OF EACH MANHOLE.
2. NO REPRESENTATIVE OF THE CITY ENGINEER WILL SURVEY OR LAY OUT ANY PORTION OF THE WORK.
3. THE OWNER OR HIS AUTHORIZED REPRESENTATIVE SHALL FURNISH THE CITY ENGINEER WITH GRADE SHEETS AND STATIONING FOR ALL HOUSE LATERALS AND Y BRANCHES AND SHALL PROVIDE STAKES FOR THEM AT THEIR PROPER LOCATIONS WITH STATIONING PLAINLY MARKED. ANY CHANGE IN LOCATION SHALL BE REQUESTED IN WRITING BY THE OWNER OR HIS REPRESENTATIVE.
4. THE PRIVATE ENGINEER SHALL FURNISH THE HOUSE LATERAL DEPTH AT THE PROPERTY LINE BELOW THE TOP OF CURB ELEVATION FOR EACH HOUSE LATERAL ON THE GRADE SHEET.
5. NO REVISIONS SHALL BE MADE IN THESE PLANS WITHOUT THE APPROVAL OF THE CITY ENGINEER.
6. USE STANDARD MANHOLE FRAMES AND COVERS, S-117.
7. USE EXTRA STRENGTH PIPE & ALL PIPE IS STANDARD DEPTH.
8. USE "WEDGELOCK" OR "SPED-SEAL" FOR ALL Y.C. JOINTS PER SPECS, SECS. 9 & 10.
9. RESURFACE ALL TRENCH WITHIN PAVED AREA TO MEET L.A. COUNTY ROAD DEPT. OR CALIF. STATE HIGHWAY REQUIREMENTS IN ACCORDANCE WITH PERMITS.
10. ENCASE FOUR FEET OF SEWER AT POINTS OF INTERFERENCE WITH POLES, CASE III, S-117.
11. HOUSE LATERALS TO BE CONSTRUCTED WITH 1/4" RISE PER FOOT TO PROPERTY LINE.
12. ALL STRUCTURES SHALL BE BRICK SEWER STRUCTURES, S-9-104. PRECAST CONCRETE MANHOLES PER S-9-135 OR S-9-178 MAY BE USED AS AN ALTERNATE IN LOCATIONS APPROVED BY THE CITY ENGINEER.
13. FOR ALLOWABLE LEAKAGE TEST USE FORMULA NO. 1, SPECS, SEC. 14.
14. MANHOLE TOPS IN UNIMPROVED RIGHTS-OF-WAY TO BE SIX INCHES ABOVE FINISHED GRADE.
15. THE CONTRACTOR SHALL NOTIFY THE CONSTRUCTION DIVISION BY TELEPHONE, MADISON 5-414, EXT. 8-557, AT LEAST TWENTY-FOUR HOURS BEFORE STARTING ANY WORK UNDER THIS CONTRACT.
16. STANDARD SPECIFICATIONS DATED OCTOBER 25, 1961 APPLY IN THE CONSTRUCTION OF THIS PROJECT.
17. THE EXISTENCE AND LOCATION OF ANY UNDERGROUND UTILITY PIPES OR STRUCTURES SHOWN ON THESE PLANS ARE OBTAINED BY A SEARCH OF THE AVAILABLE RECORDS. TO THE BEST OF OUR KNOWLEDGE THERE ARE NO EXISTING UTILITIES EXCEPT AS SHOWN ON THIS MAP. THE CONTRACTOR IS REQUIRED TO TAKE DUE PRECAUTIONARY MEASURES TO PROTECT THE UTILITY LINES SHOWN AND ANY OTHER LINES NOT OF RECORD OR NOT SHOWN ON THIS DRAWING. THE CONTRACTOR SHALL BEAR THE TOTAL EXPENSE OF REPAIR TO ANY LINES DAMAGED BY ANY OPERATION IN CONNECTION WITH THE PROSECUTION OF THIS WORK.

NO CONNECTIONS FOR THE DISPOSAL OF INDUSTRIAL WASTES SHALL BE MADE TO SEWERS SHOWN ON THESE DRAWINGS WITHOUT WRITTEN PERMISSION FROM THE CHIEF ENGINEER AND GENERAL MANAGER OF THE COUNTY SANITATION DISTRICTS.

ISSUE NO PERMITS UNTIL
P.C. 5949 IS ACCEPTED

NOTE:
GRADES TO WHICH THIS IMPROVEMENT IS TO BE CONSTRUCTED ARE SHOWN ON PLANS AND PROFILES. GRADE POINTS FOR TOP OF CURBS, CENTER LINE OF STREETS, OR CENTER LINE OF ALLEYS ARE SHOWN BY CIRCLES ON PROFILES. AT ALL POINTS BETWEEN DESIGNATED POINTS THE GRADE SHALL BE ESTABLISHED SO AS TO CONFORM TO A STRAIGHT LINE DRAWN BETWEEN SAID DESIGNATED POINTS.
ELEVATIONS ARE IN FEET ABOVE U.S.C. & G.S. SEA LEVEL DATUM OF 1929.
THIS DRAWING AND THE DATA HEREON ARE HEREBY MADE A PART OF THE SPECIFICATIONS.
WORK SHALL BE CONSTRUCTED ACCORDING TO SPECIFICATIONS ON FILE IN THE OFFICE OF THE CITY ENGINEER AND SHALL BE PROSECUTED ONLY IN THE PRESENCE OF THE CITY ENGINEER.
BEFORE WORK CAN BE STARTED, THE CONTRACTOR MUST OBTAIN A PERMIT TO EXCAVATE IN CITY STREETS FROM THE L.A. COUNTY ROAD DEPT., DISTRICT OFFICE NO. 4 AND MAKE DEPOSIT WITH THE CITY OF ARTESIA 18 1/2 SOUTH PIONEER BLVD., ARTESIA, CALIF. TO COVER THE COST OF CONSTRUCTION INSPECTION AND RECORD STAKES.
APPROVAL OF THIS PLAN BY THE CITY OF ARTESIA DOES NOT CONSTITUTE A REPRESENTATION AS TO THE ACCURACY OF THE LOCATION OF OR THE EXISTENCE OR NON-EXISTENCE OF ANY UNDERGROUND UTILITY PIPE, OR STRUCTURE WITHIN THE LIMITS OF THIS PROJECT. THIS NOTE APPLIES TO ALL PAGES.
IF WORK IS TO BE DONE IN A STATE HIGHWAY, A PERMIT MUST BE OBTAINED FROM THE STATE OF CALIFORNIA, DIVISION OF HIGHWAYS, 120 SOUTH SPRING STREET.

CITY OF ARTESIA, CALIFORNIA

APPROVED, JOHN A. LAMBIE, CITY ENGINEER APPROVED, J. PARKHURST, CHIEF ENGINEER

By: *John A. Lambie* By: *J. Parkhurst*

C.E. SANITATION ENGINEER OFFICE ENGINEER

CHECKED BY: *Edw. F. Pearson*

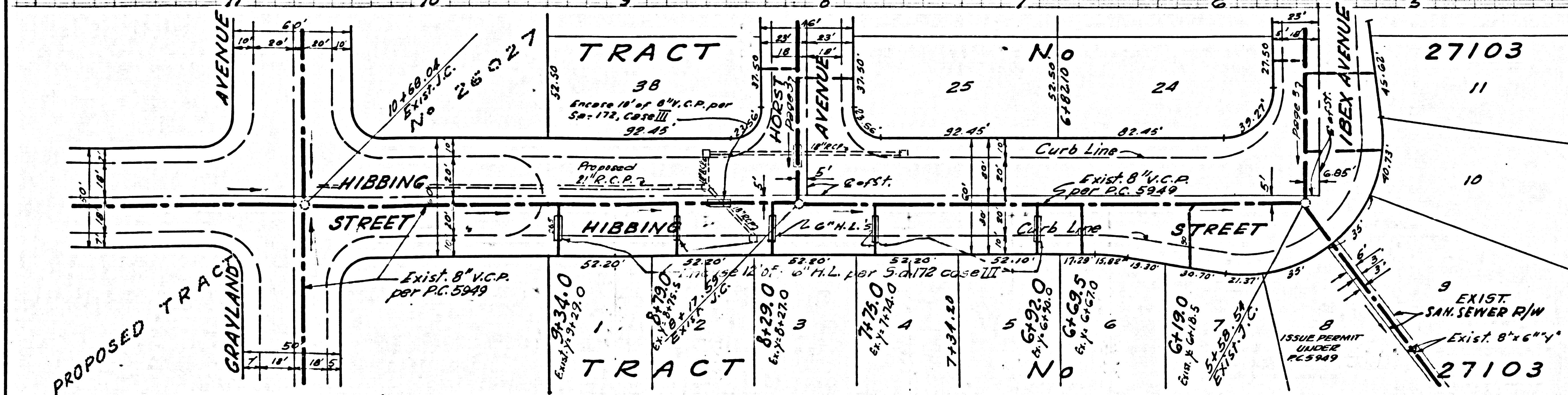
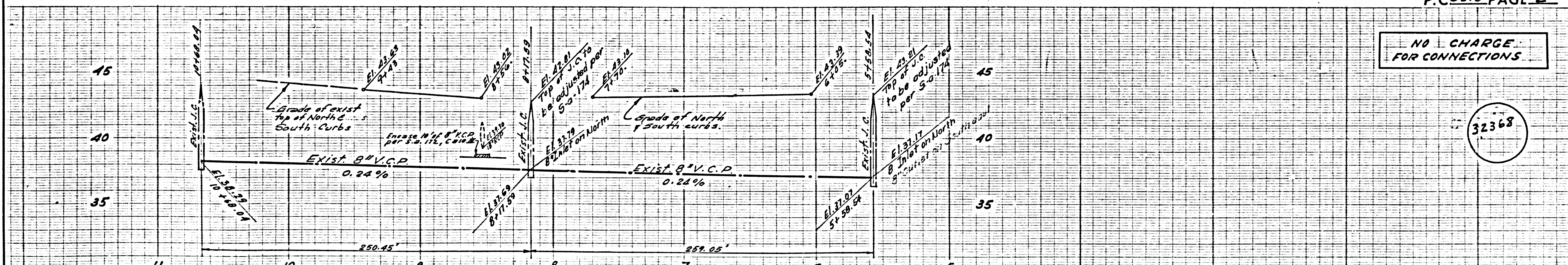
OFFICE OF CITY ENGINEER, REG. C. E. NO. 3416

SUBMITTED BY: *John L. E. Eide* 5-18-62
LOS CERRITOS REGIONAL ENGINEER, REG. C.E. #3871

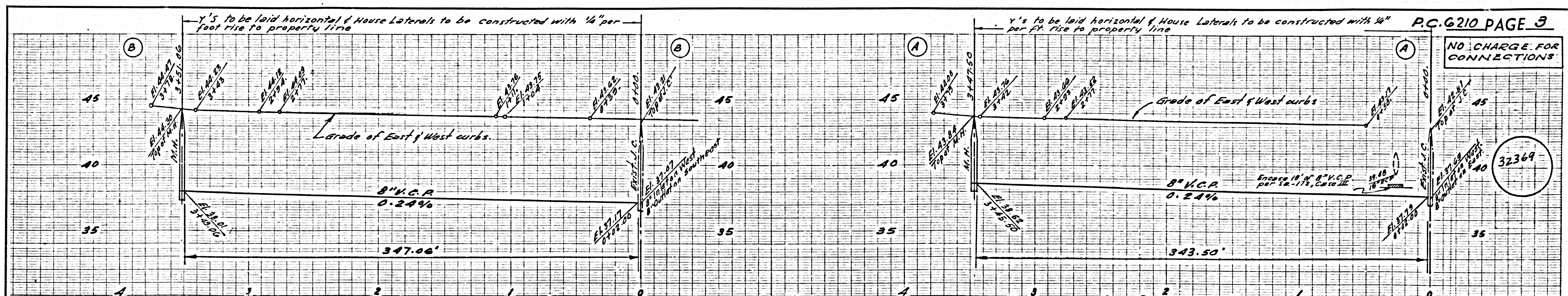
P.C. 6210 PAGE 2

NO CHARGE
FOR CONNECTIONS

32368



NOTE TO CONTRACTOR
AT TIME OF CONSTRUCTION
STATIONING TO BE VERIFIED
WITH P.C. 5949



NO CHARGE FOR CONNECTIONS

32369

