

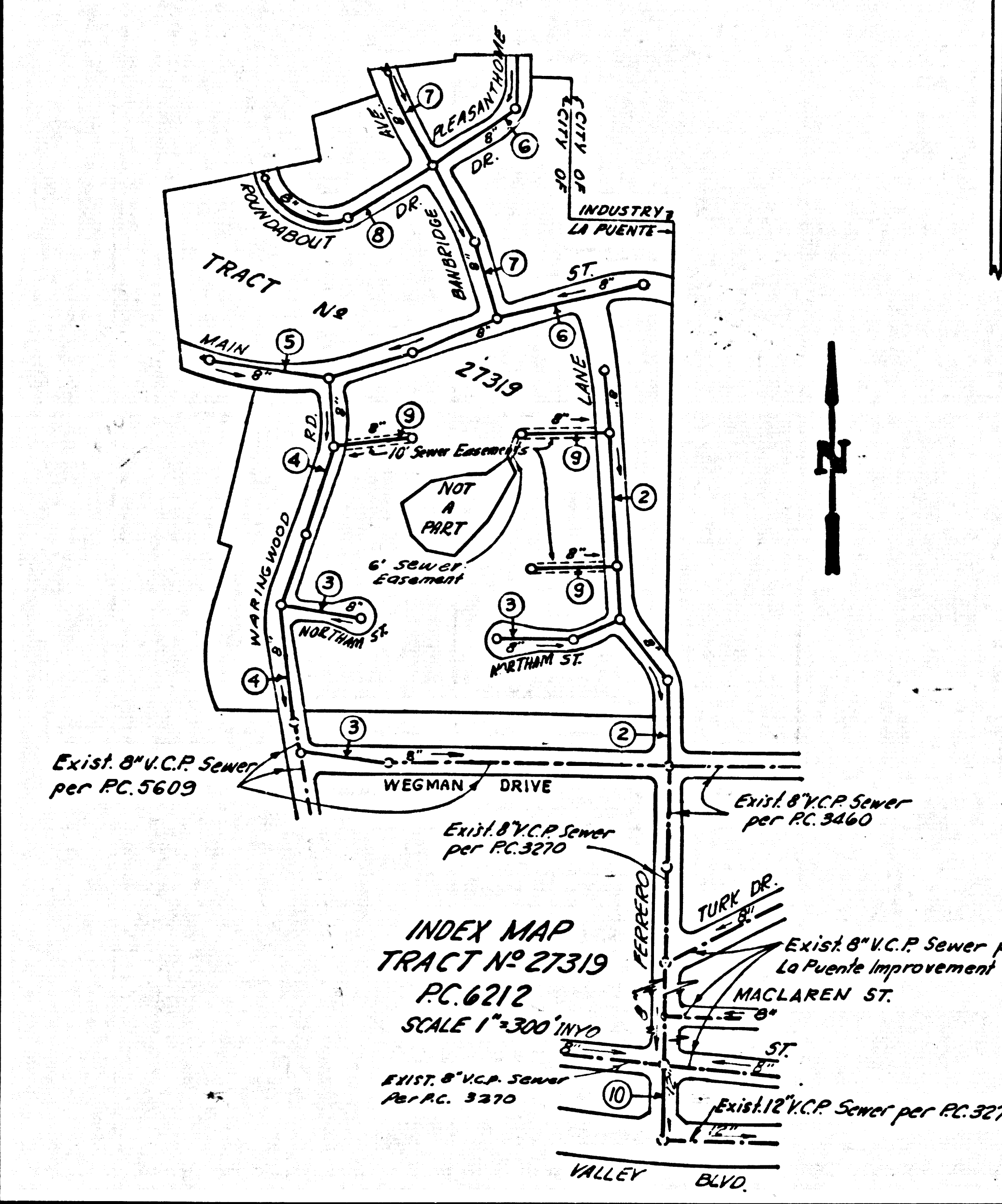
DOUBLE SCALE
CITY OF LA PUENTE BLDG. DIST. NO. 2.02

PROFILE AUGMENT AND GRADE OF P.C. 6212
SANITARY SEWERS PAGE 1
TO BE CONSTRUCTED IN

TRACT NO. 27319
PRIVATE CONTRACT NO. 6212

W.S. 38
5 SHEETS, 12 PAGES
SCALE: VERT. 1" = 4' APRIL 1962
HORIZ. 1" = 40'
PREPARED IN THE OFFICES OF
ADAMS & ELLS
CIVIL ENGINEERS
REG. C. E. NO. 10880
FOR LEGEND SEE PLAN NO. S-A-64

32462



BENCH MARK: PUENTE QUAD 1955 5G 1043 ELEV. 328.671
3" I.P. & U.S. GEODETIC CAP 8" ABOVE SURFACE @ PUENTE STATION OF S.P.R.R. ± 35' S/O VALLEY BLVD. ± 160' W/O INT. VALLEY BLVD. & GLENDORA AVE. ± 125' N/O E. END OF STATION PLATFORM.

COLLECT CHARGES AS INDICATED
Reneald H. Kenny 5-22-62

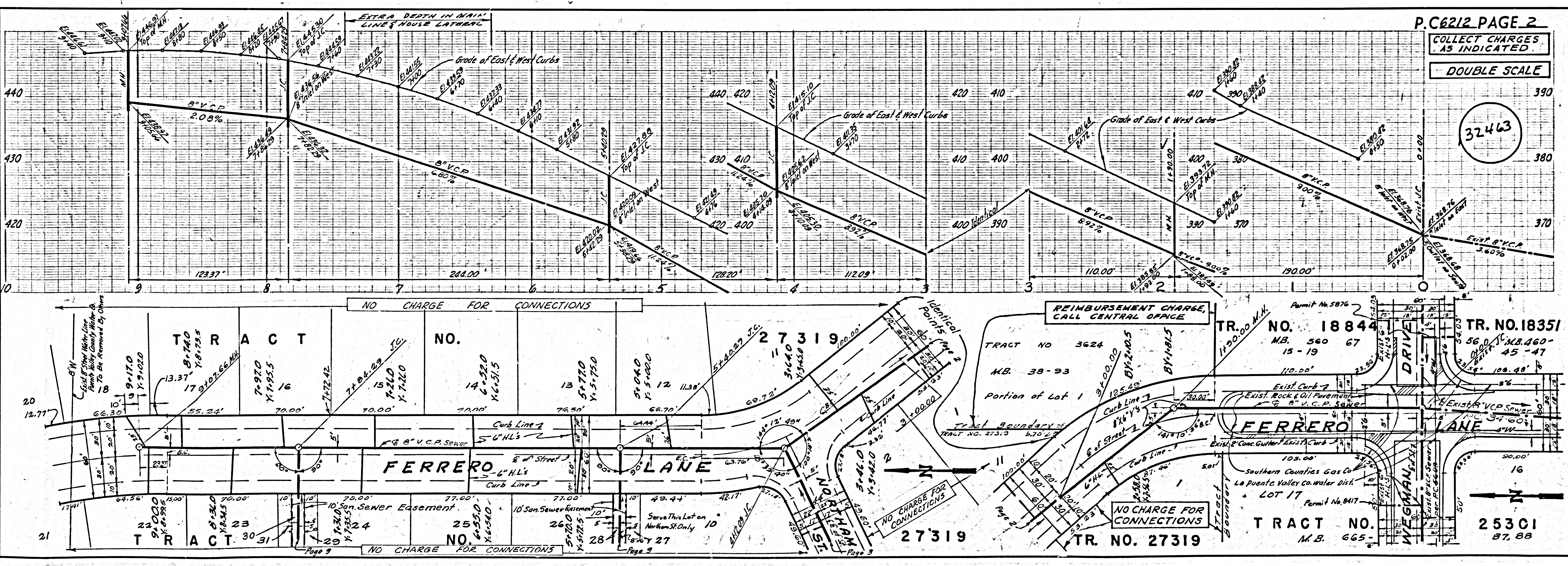
- NOTES:
1. PROVIDE STAKES ON THE PROPERTY LINE OR PROPERTY LINES PRODUCED AT RIGHT ANGLES TO THE SEWER LINE AT THE CENTER LINE OF EACH MANHOLE.
 2. NO REPRESENTATIVE OF THE CITY ENGINEER WILL SURVEY OR LAY OUT ANY PORTION OF THE WORK.
 3. THE OWNER OR HIS AUTHORIZED REPRESENTATIVE SHALL FURNISH THE CITY ENGINEER WITH GRADE SHEETS AND STATIONING FOR ALL HOUSE LATERALS AND Y BRANCHES AND SHALL PROVIDE STAKES FOR THEM AT THEIR PROPER LOCATIONS WITH STATIONING PLAINLY MARKED. ANY CHANGE IN LOCATION SHALL BE REQUESTED IN WRITING BY THE OWNER OR HIS REPRESENTATIVE.
 4. THE PRIVATE ENGINEER SHALL FURNISH THE HOUSE LATERAL DEPTH AT THE PROPERTY LINE BELOW THE TOP OF CURB ELEVATION FOR EACH HOUSE LATERAL ON THE GRADE SHEET.
 5. NO REVISIONS SHALL BE MADE IN THESE PLANS WITHOUT THE APPROVAL OF THE CITY ENGINEER.
 6. USE STANDARD MANHOLE FRAMES AND COVERS, S-117.
 7. USE "EXTRA STRENGTH PIPE, ALL PIPE STANDARD DEPTH EXCEPT AS NOTED."
 8. USE "WEDGE-LOCK" OR "SPEED-SEAL" FOR ALL V.C.P. JOINTS PER SPECS, SECS. 36.
 9. RESURFACE ALL TRENCH WITHIN PAVED AREA TO MEET L.A. COUNTY ROAD DEPT. OR CALIF. STATE HIGHWAY REQUIREMENTS IN ACCORDANCE WITH PERMITS.
 10. ENCASE FOUR FEET OF SEWER AT POINTS OF INTERFERENCE WITH POLES, CASE IN, S-172.
 11. HOUSE LATERALS TO BE CONSTRUCTED WITH INVERTS AT PROPERTY LINE 6 FEET BELOW CURB GRADE.
 12. MANHOLES SHALL BE BRICK SEWER STRUCTURES, S-4-104, PRECAST CONCRETE MANHOLES PER S-4-125 OR S-4-178 MAY BE USED AS AN ALTERNATE IN LOCATIONS APPROVED BY THE CITY ENGINEER.
 13. FOR ALLOWABLE LEAKAGE TEST USE FORMULA NO. 2, SPECS, SEC. 54.
 14. MANHOLE TOPS IN UNIMPROVED RIGHTS-OF-WAY TO BE SIX INCHES ABOVE FINISHED GRADE.
 15. THE CONTRACTOR SHALL NOTIFY THE CONSTRUCTION DIVISION BY TELEPHONE, MADISON 3-474, 48 HOURS, AT LEAST TWENTY-FOUR HOURS BEFORE STARTING ANY WORK UNDER THIS CONTRACT.
 16. STANDARD SPECIFICATIONS DATED OCTOBER 25, 1961 APPLY IN THE CONSTRUCTION OF THIS PROJECT.
 17. "SEWERS IN FILLED GROUND"
(a) NO CONSTRUCTION WILL BE PERMITTED IN FILLED AREA UNLESS ACCEPTABLE CERTIFICATION IS SUBMITTED TO THE CONSTRUCTION DIVISION OF THE COUNTY ENGINEERS DEPT. THAT RELATIVE COMPACTION IS GREATER THAN 85%.
(b) IF COMPACTION IS LESS THAN 80% THE SEWER MUST BE CRADLED AS SHOWN IN THE PLANS PER S-9-146.
(c) IF COMPACTION IS GREATER THAN 80% NEITHER CRADLING NOR SPECIAL MANHOLE BASES WILL BE REQUIRED, HOWEVER, JOINT COMPOUND OR WEDGE LOCK OR "SPEEDSEAL" MUST BE SUBSTITUTED FOR CEMENT MORTAR FOR ALL JOINTS IN FILLED AREAS.
 18. ALL FILL TO BE IN PLACE BEFORE CONSTRUCTION OF SEWER.
 19. ON LOTS WITH STATION SHOWN IN CIRCLE, THE HOUSE LATERAL SHALL NOT BE BUILT UPSTREAM OF THAT STATION.
 20. NO CONNECTIONS FOR THE DISPOSAL OF INDUSTRIAL WASTES SHALL BE MADE TO SEWERS SHOWN ON THESE DRAWINGS WITHOUT WRITTEN PERMISSION FROM THE CHIEF ENGINEER AND GENERAL MANAGER OF THE COUNTY SANITATION DISTRICTS.

CITY OF LA PUENTE
APPROVED BY: [Signature] 5-24-62
CITY MANAGER

NOTE:
GRADES TO WHICH THIS IMPROVEMENT IS TO BE CONSTRUCTED ARE SHOWN ON PLANS AND PROFILES. GRADE POINTS FOR TOP OF CURB, CENTER LINE OF STREETS OR CENTER LINE OF ALLEYS ARE SHOWN BY CIRCLES ON PROFILES. AT ALL POINTS BETWEEN DESIGNATED POINTS THE GRADE SHALL BE ESTABLISHED SO AS TO CONFORM TO A STRAIGHT LINE DRAWN BETWEEN SAID DESIGNATED POINTS.
ELEVATIONS ARE IN FEET ABOVE U.S. & G.S. SEA LEVEL DATUM OF 1929.
THIS DRAWING AND THE DATA HEREON ARE HEREBY MADE A PART OF THE SPECIFICATIONS ON FILE IN THE OFFICE OF THE CITY ENGINEER AND SHALL BE PROSECUTED ONLY IN THE PRESENCE OF THE CITY ENGINEER.
BEFORE WORK CAN BE STARTED THE CONTRACTOR MUST OBTAIN A PERMIT TO EXCAVATE IN CITY STREETS FROM THE L.A. COUNTY ROAD DEPT. DISTRICT OFFICE NO. 15 AND PAY A FEE TO THE CITY OF LA PUENTE, 12717 E. MAIN ST., LA PUENTE, SUFFICIENT TO COVER THE COST OF CONSTRUCTION INSPECTION AND RECORD PLANS.
APPROVAL OF THIS PLAN BY THE CITY OF LA PUENTE DOES NOT CONSTITUTE A REPRESENTATION AS TO THE ACCURACY OF THE LOCATION OR THE EXISTENCE OR NON-EXISTENCE OF ANY UNDERGROUND UTILITY PIPE, OR STRUCTURE WITHIN THE LIMITS OF THIS PROJECT. THIS NOTE APPLIES TO ALL PAGES.
IF WORK IS TO BE DONE IN A STATE HIGHWAY, A PERMIT MUST BE OBTAINED FROM THE STATE OF CALIFORNIA, DIVISION OF HIGHWAYS, 120 SOUTH SPRING STREET.

CITY OF LA PUENTE, CALIFORNIA
APPROVED, JOHN A. LAMBIE, CITY ENGINEER
APPROVED, JOHN A. FERRERO, CHIEF ENGINEER
CO. SAN. DIST. NO. 21
BY: [Signature] ASS'T. SANITATION ENGINEER
BY: [Signature] OFFICE ENGINEER
CHECKED BY: [Signature] 5-24-62
OFFICE OF CITY ENGINEER, REG. C. E. NO. 7476

SUBMITTED: W. C. Poindexter 5-24-62
SAN DIMAS REGIONAL ENGINEER



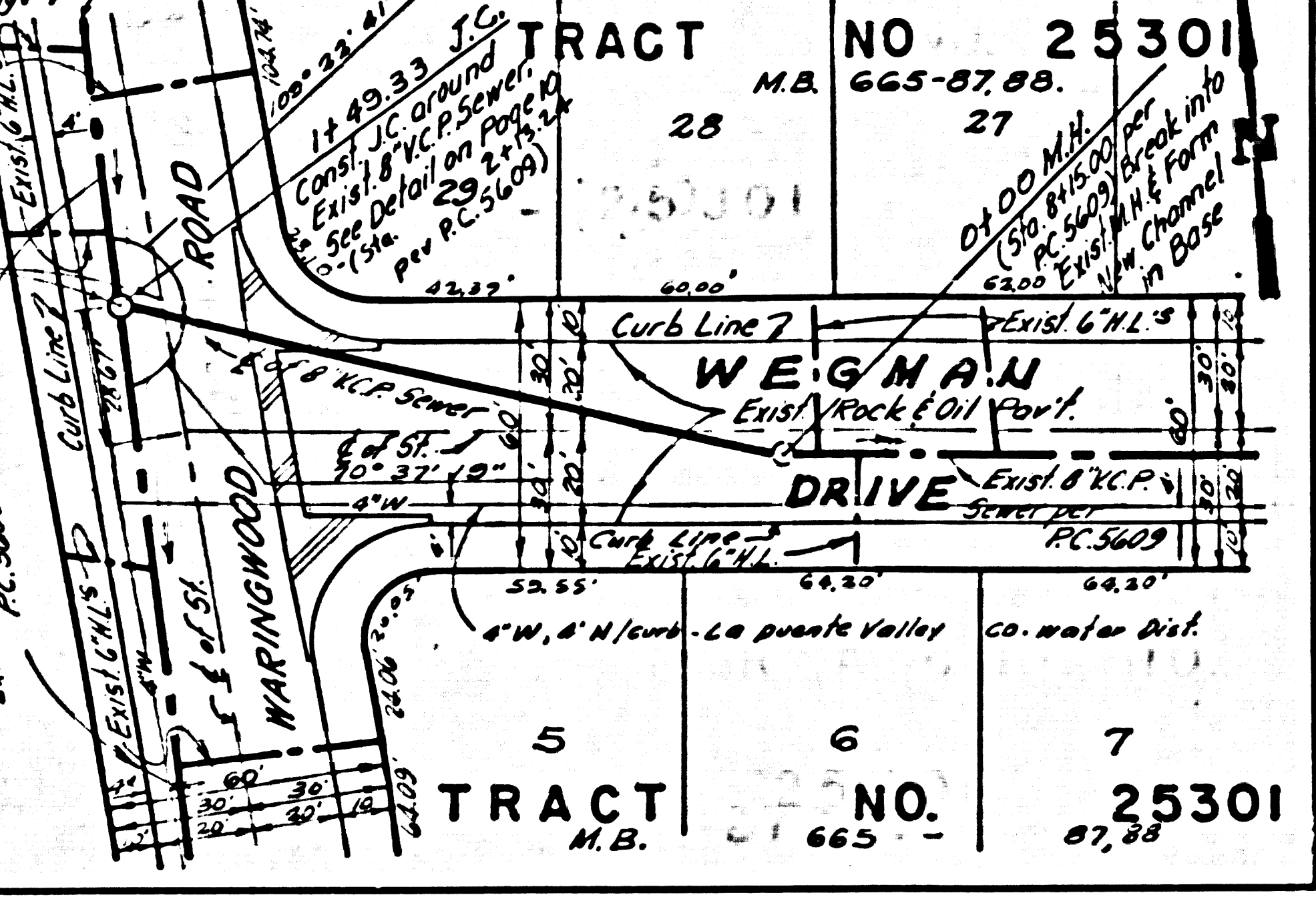
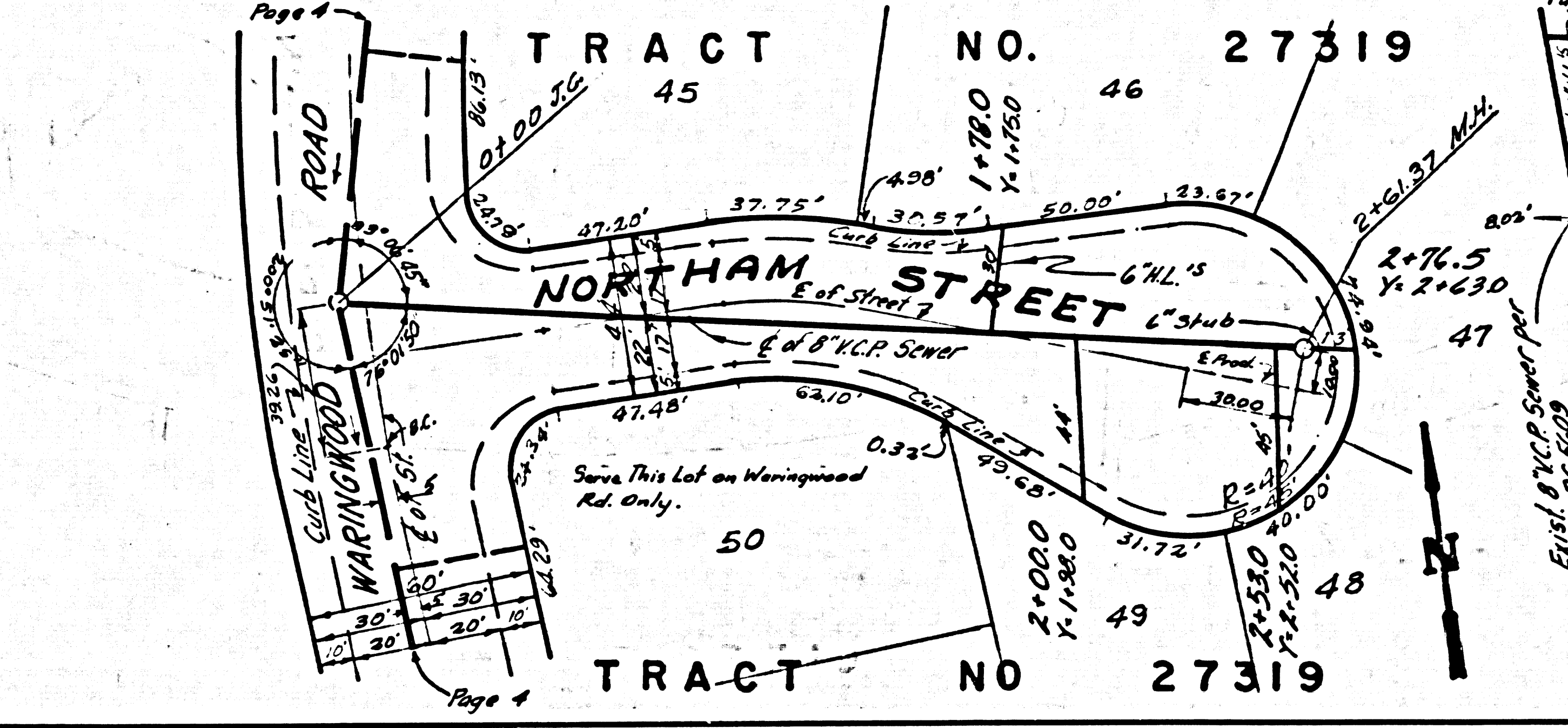
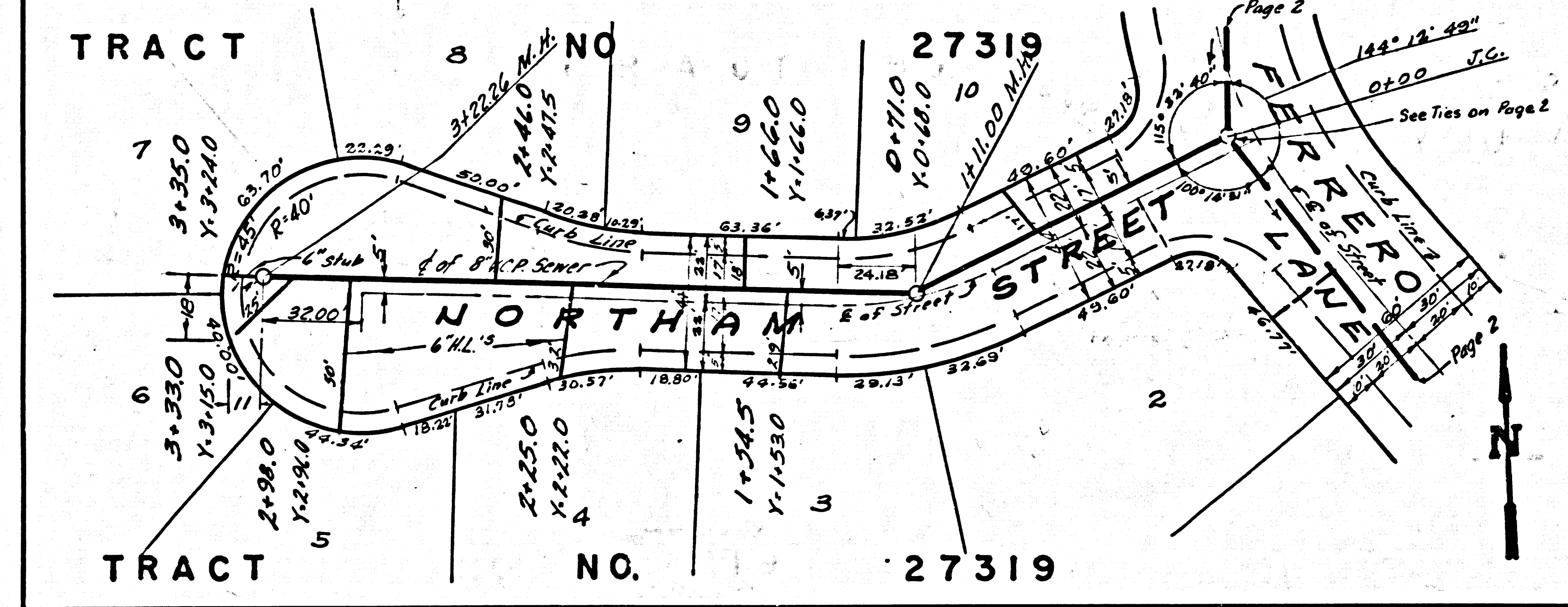
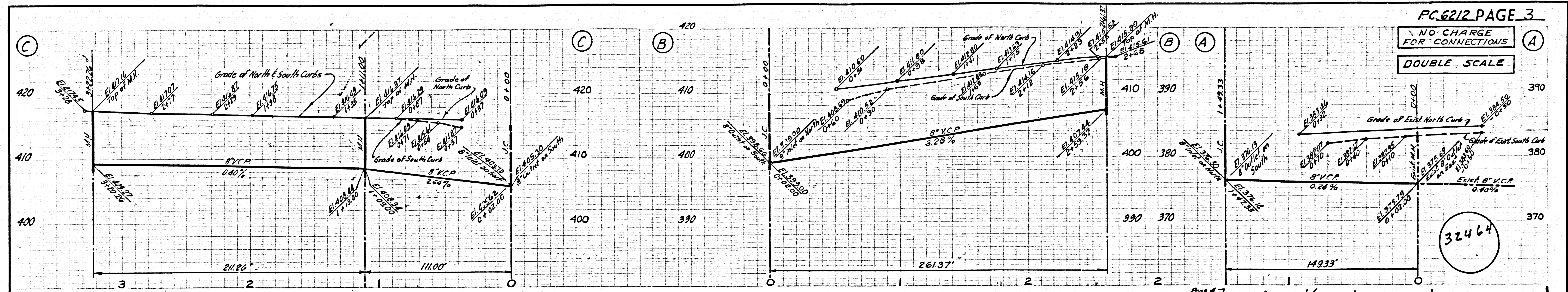
P.C. 6212 PAGE 2
COLLECT CHARGES AS INDICATED
DOUBLE SCALE

32463

SISADP ETERSSEY TRACT 1

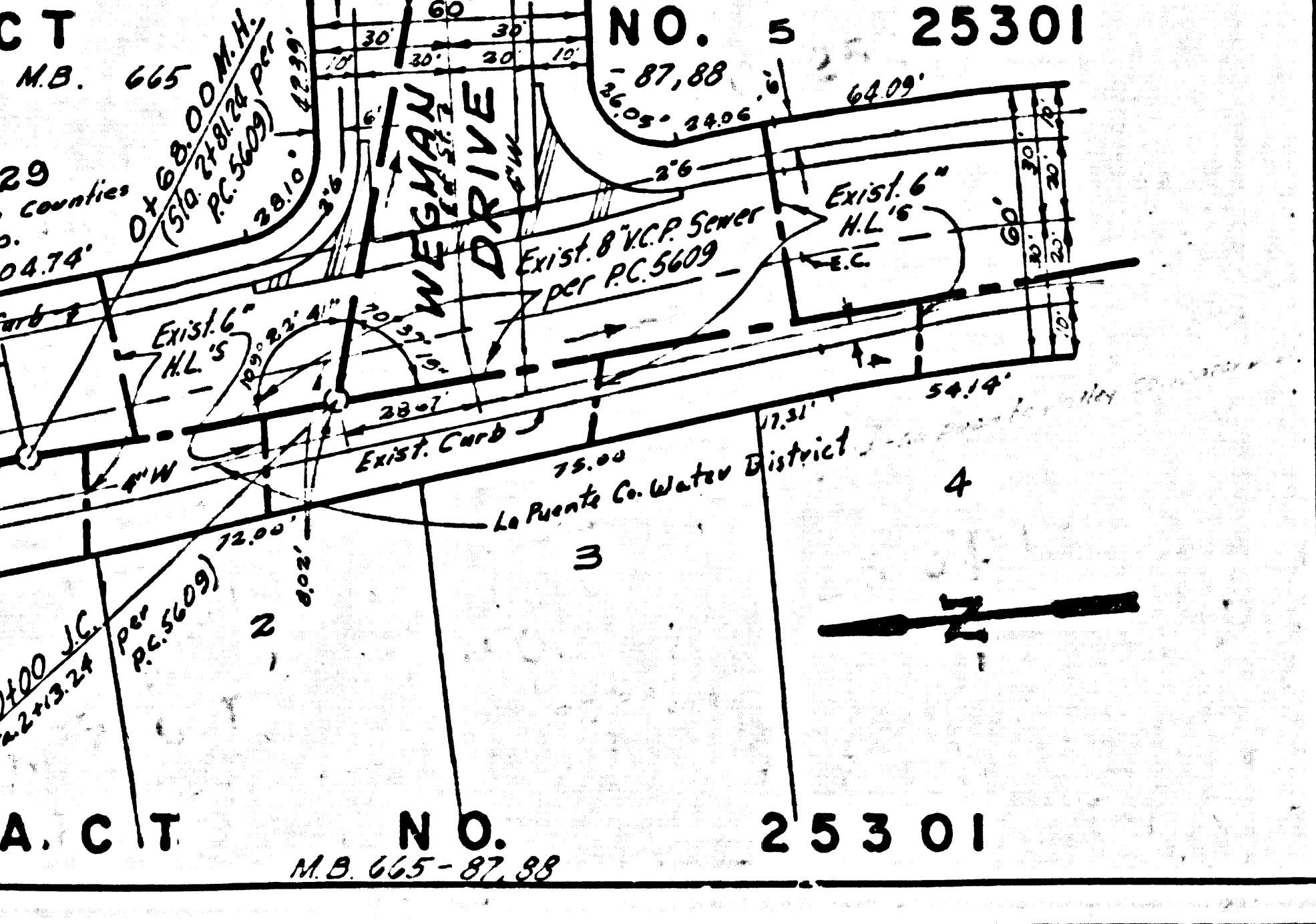
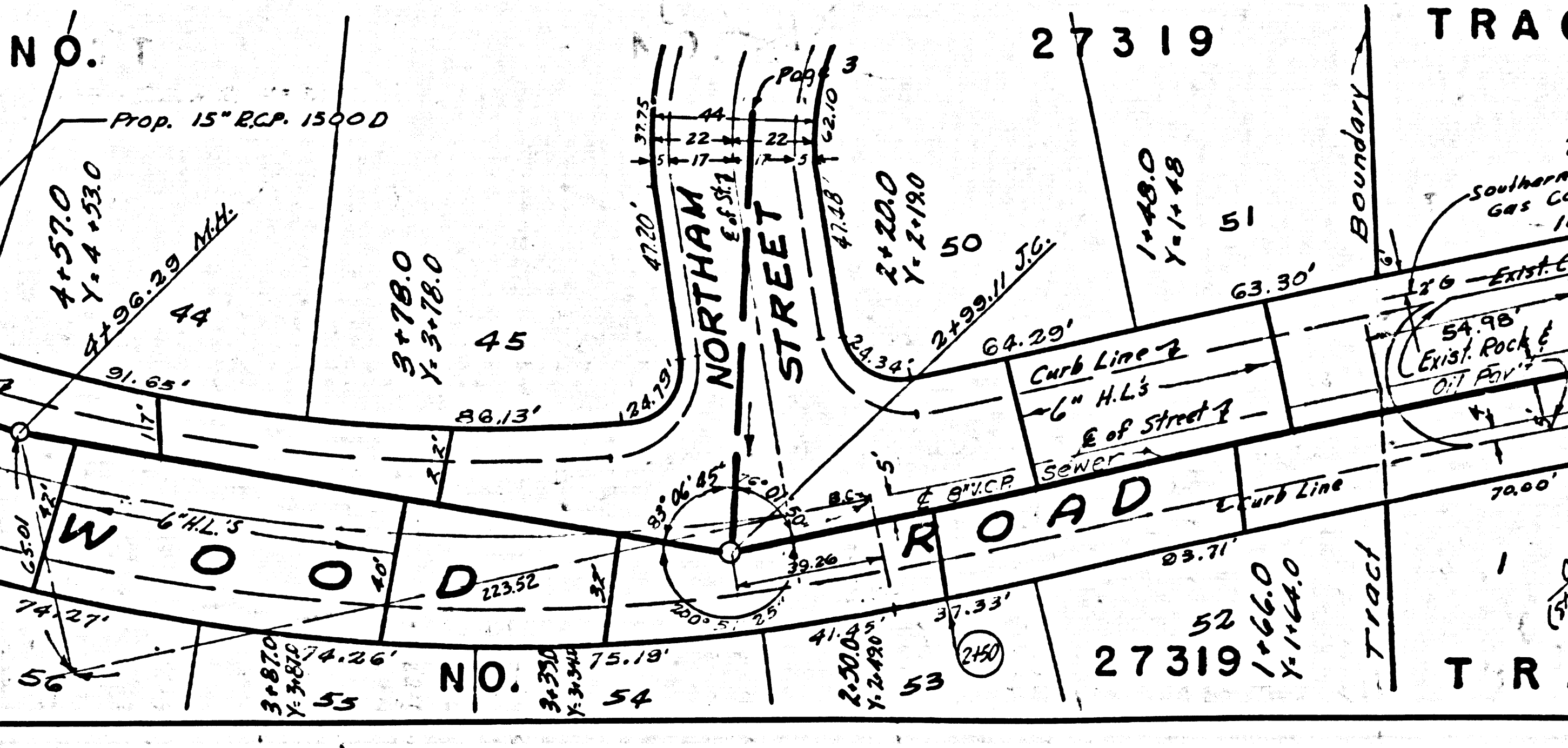
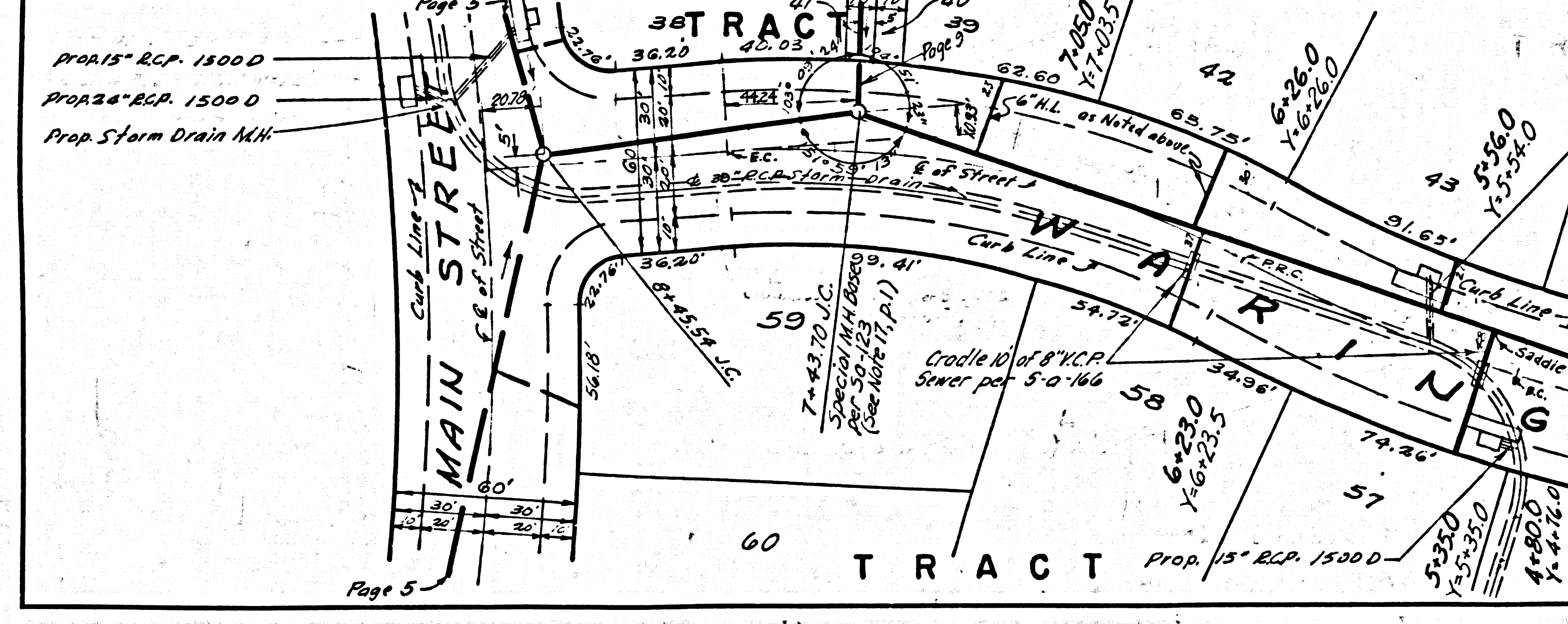
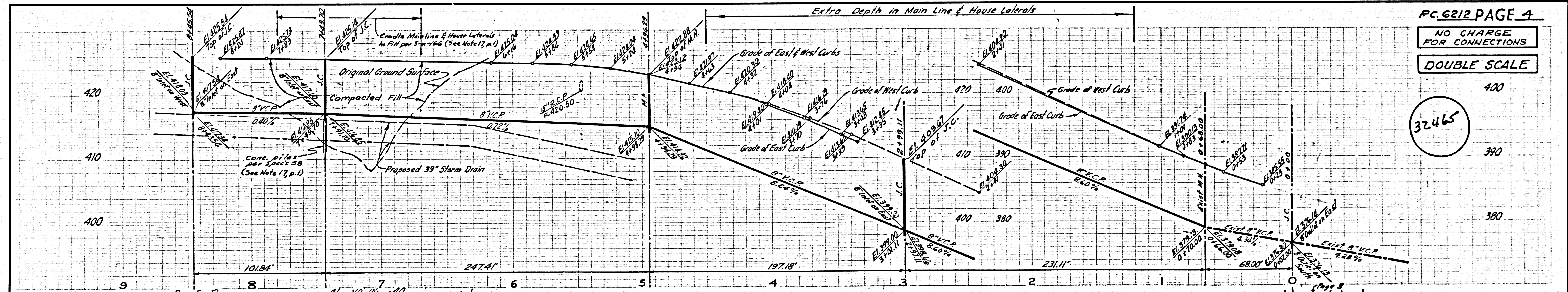
NO CHARGE FOR CONNECTIONS

DOUBLE SCALE



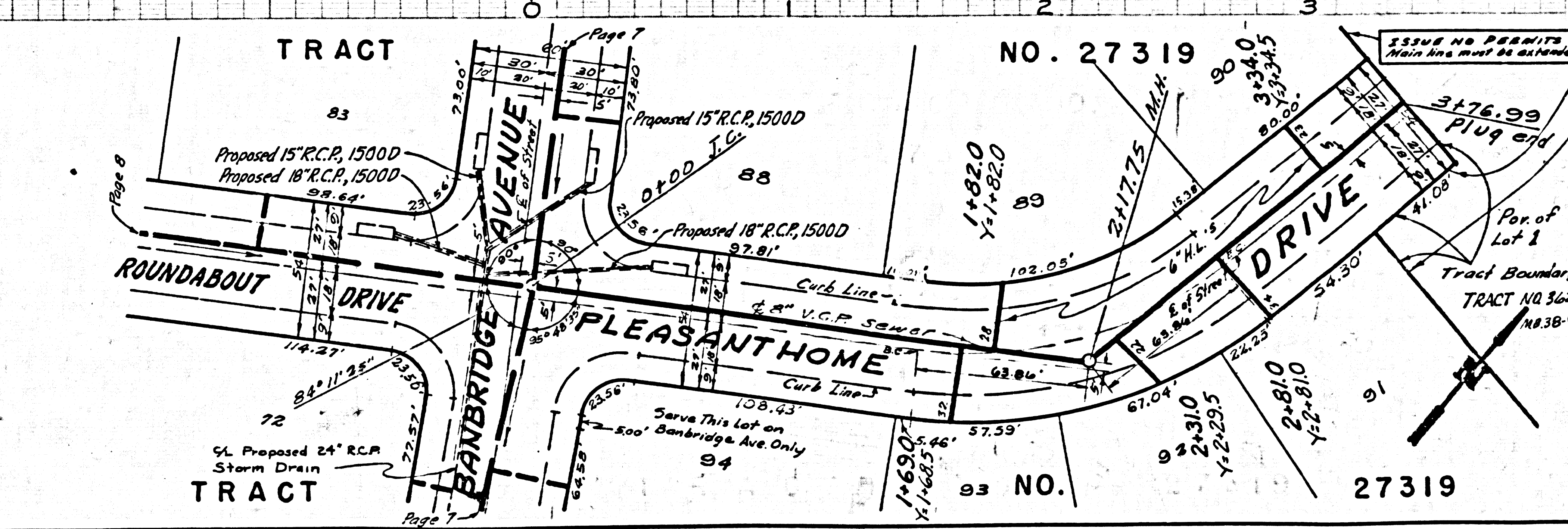
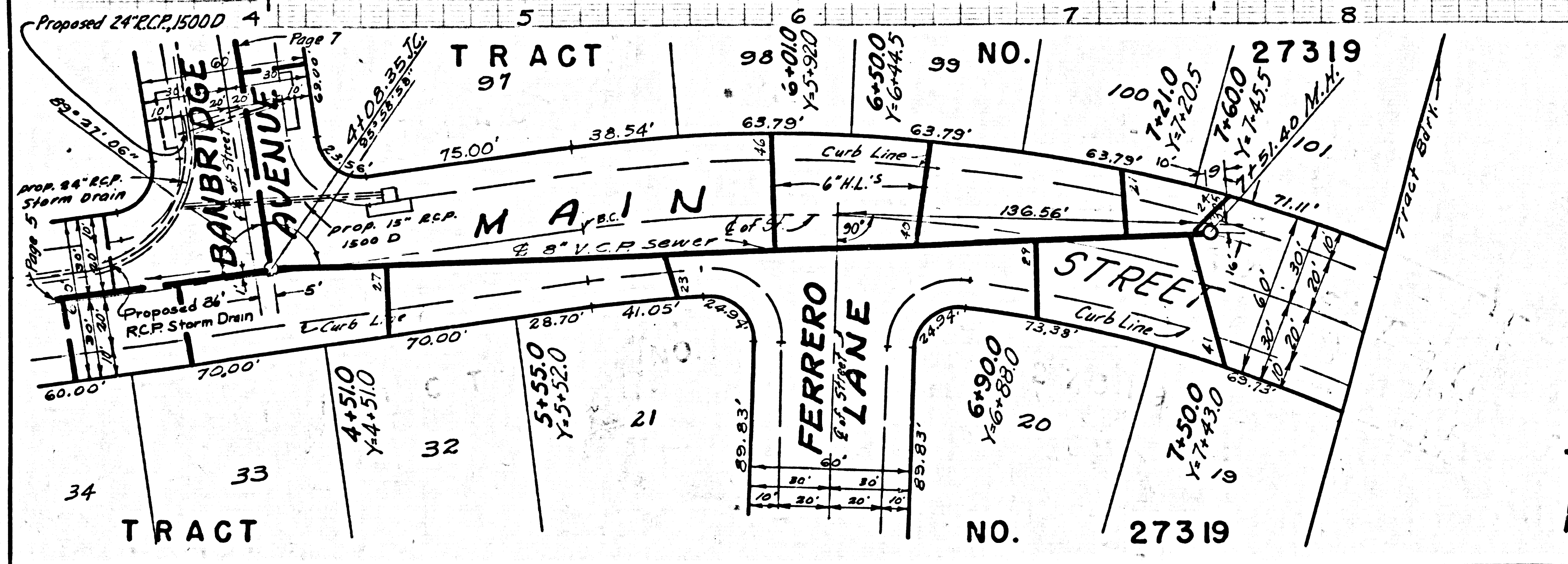
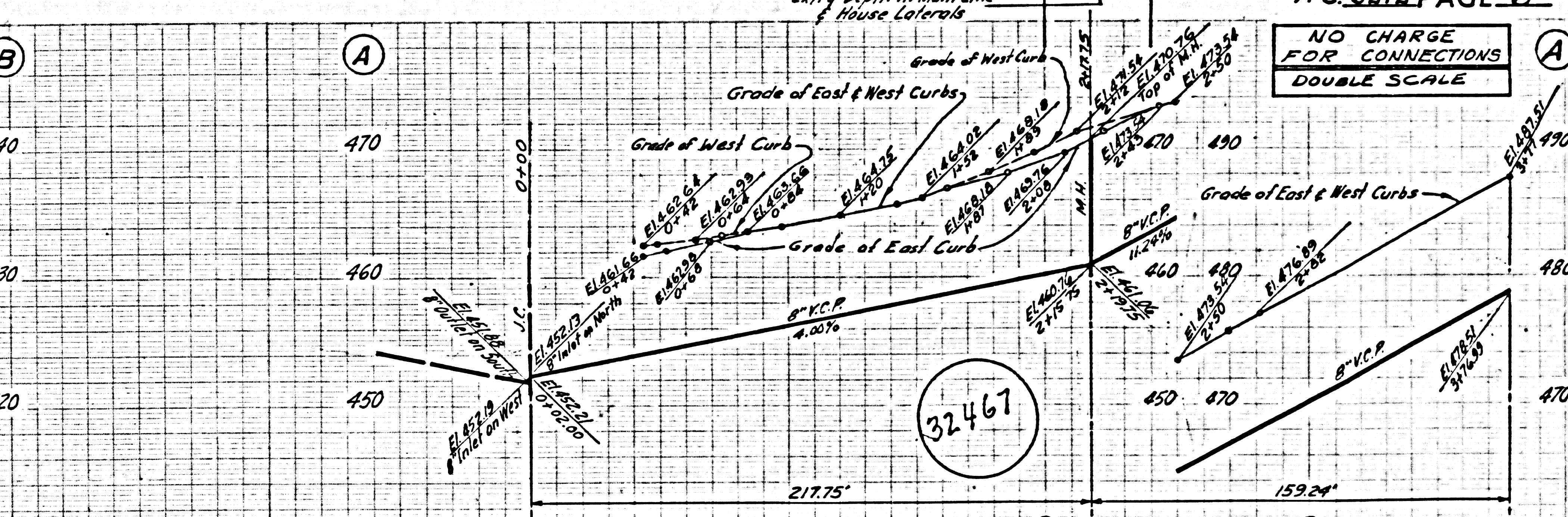
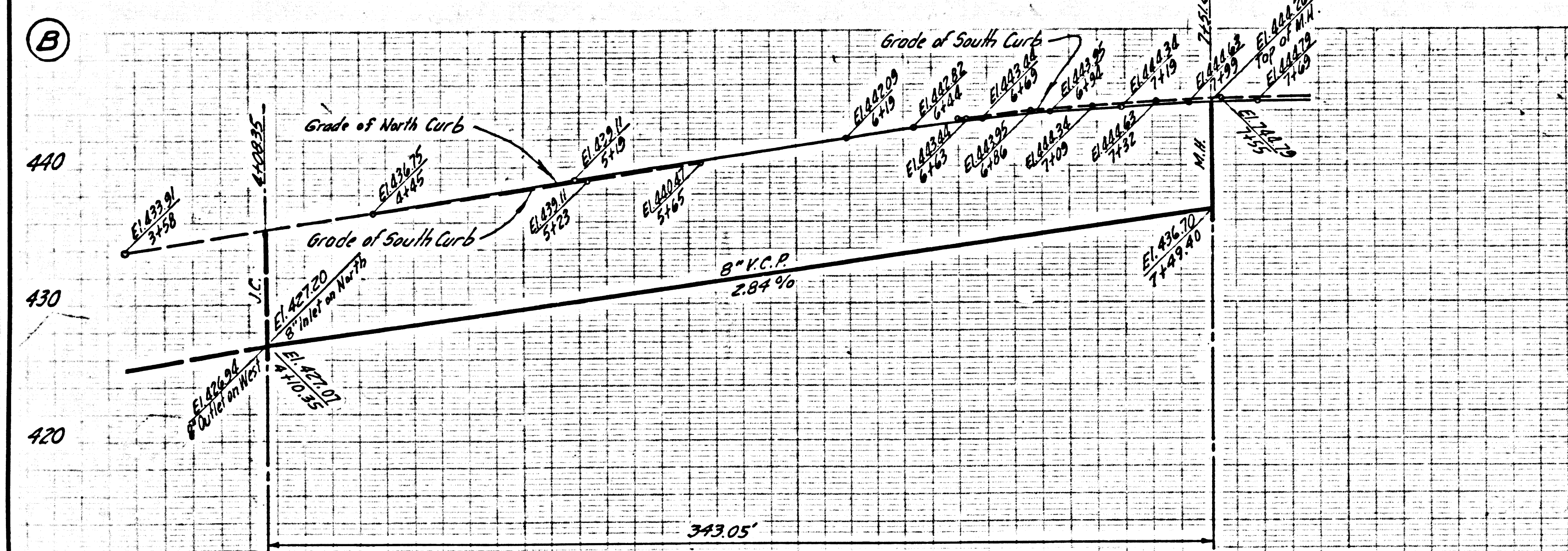
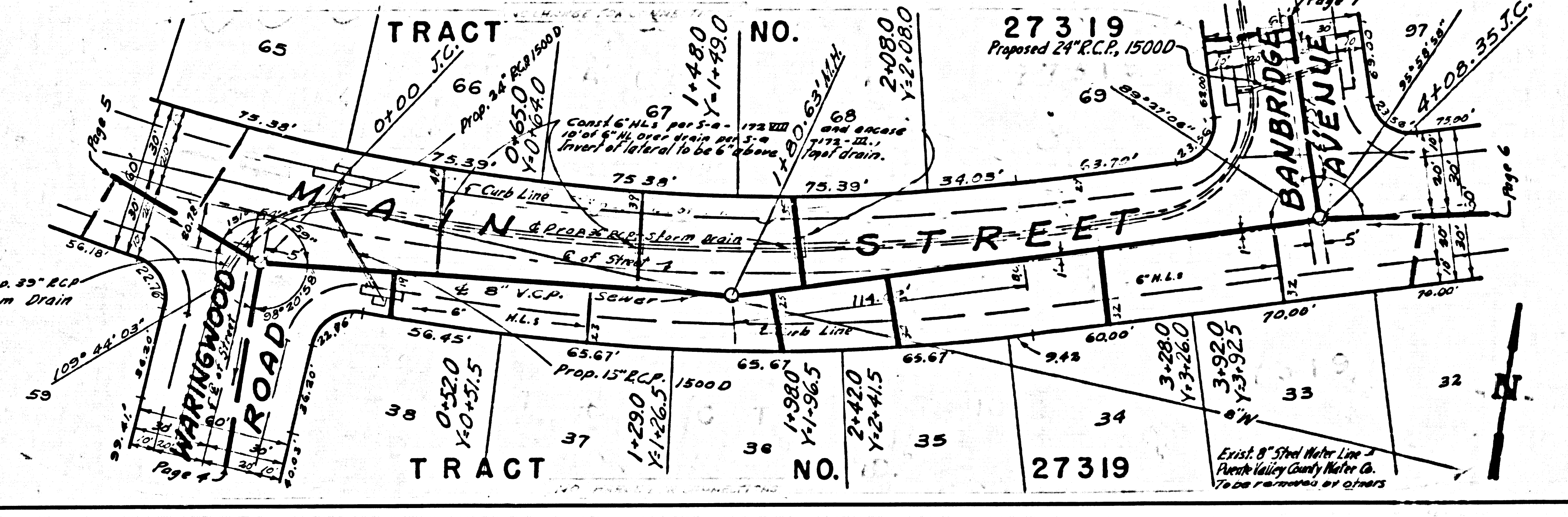
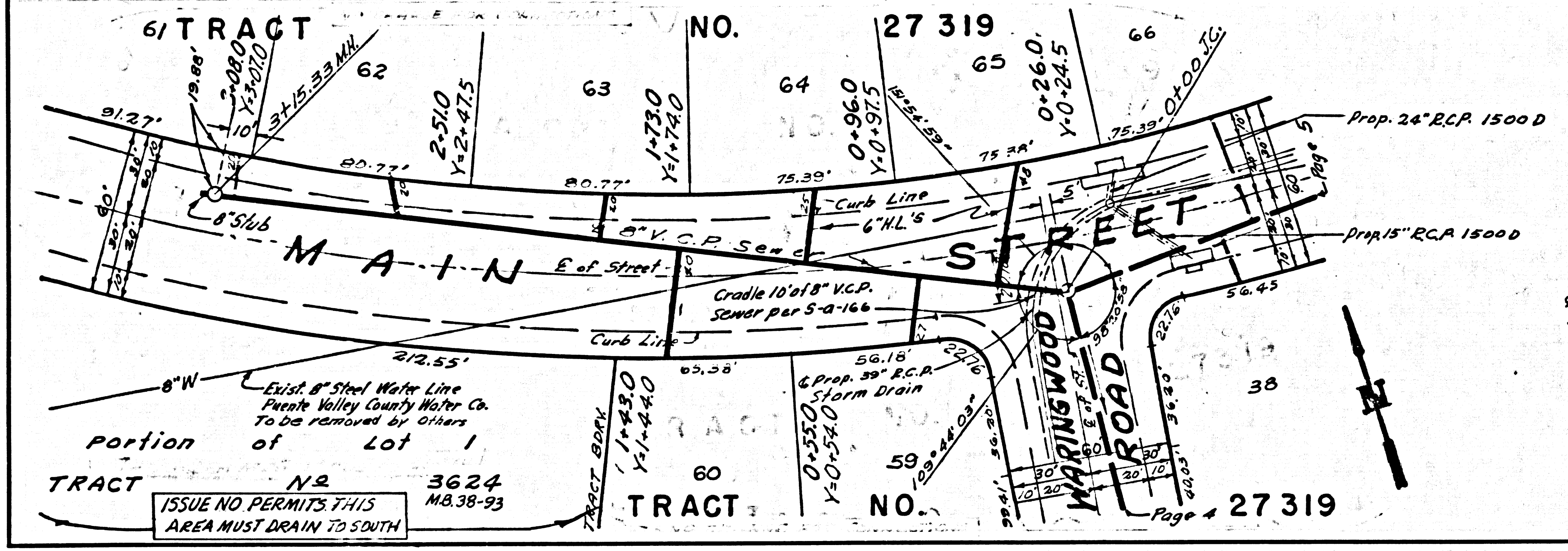
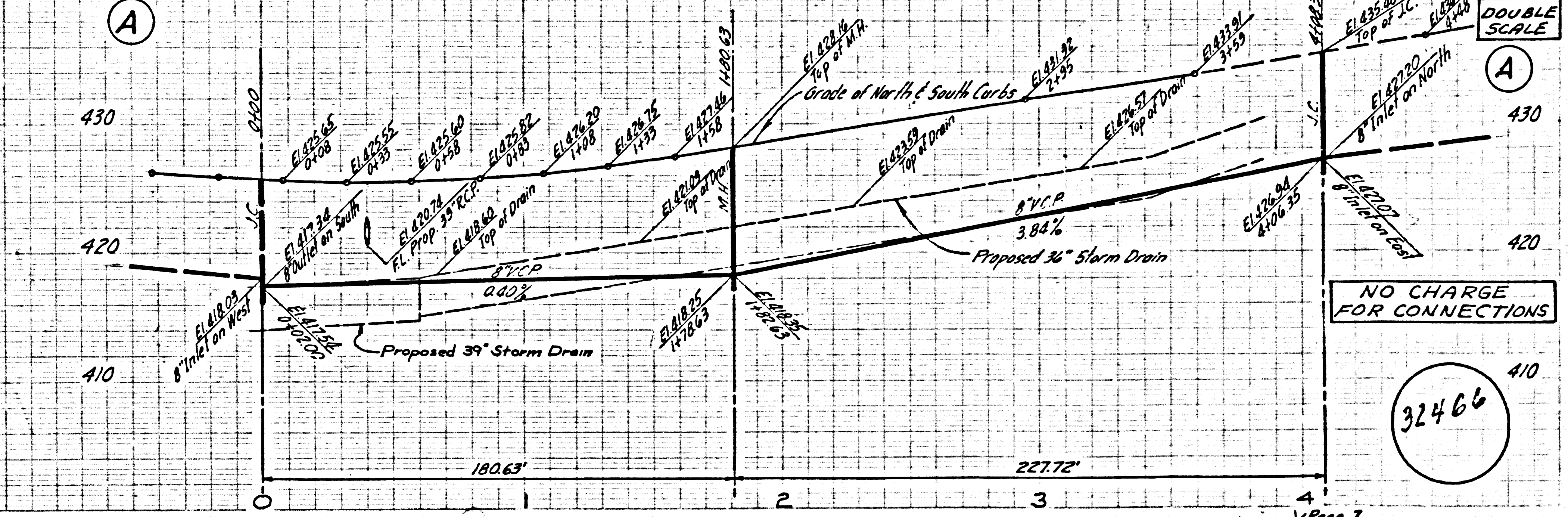
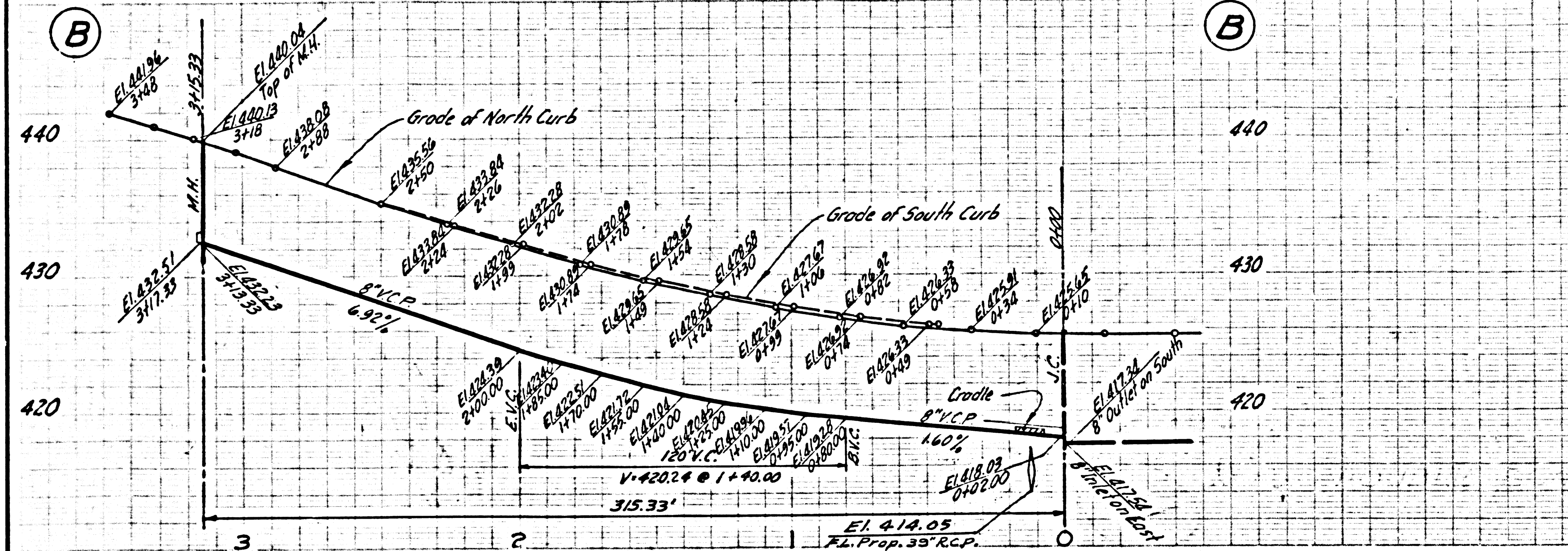
NO CHARGE FOR CONNECTIONS

DOUBLE SCALE



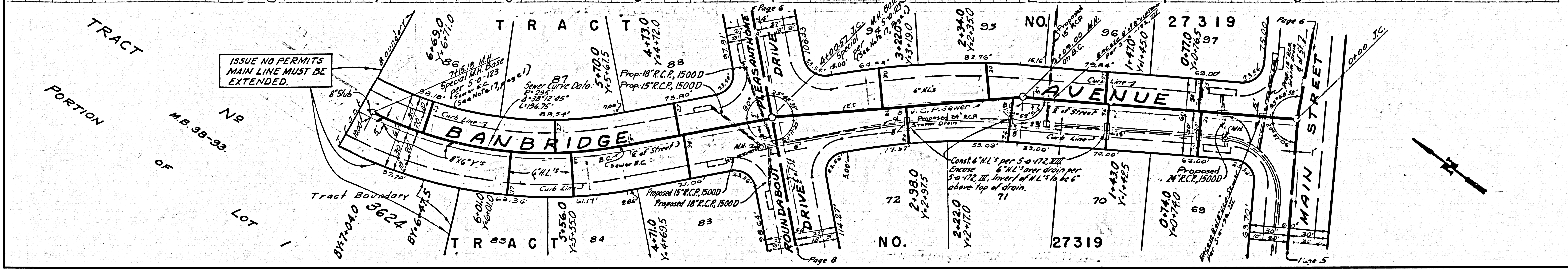
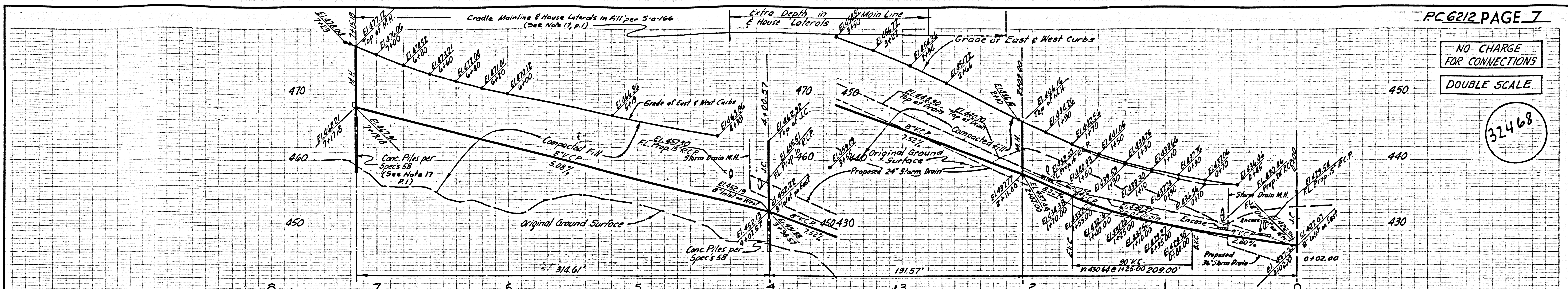
32465

TRACT NO. 27319 BC. 6212



NO CHARGE FOR CONNECTIONS
DOUBLE SCALE

32468



NO CHARGE FOR CONNECTIONS
DOUBLE SCALE

32469

