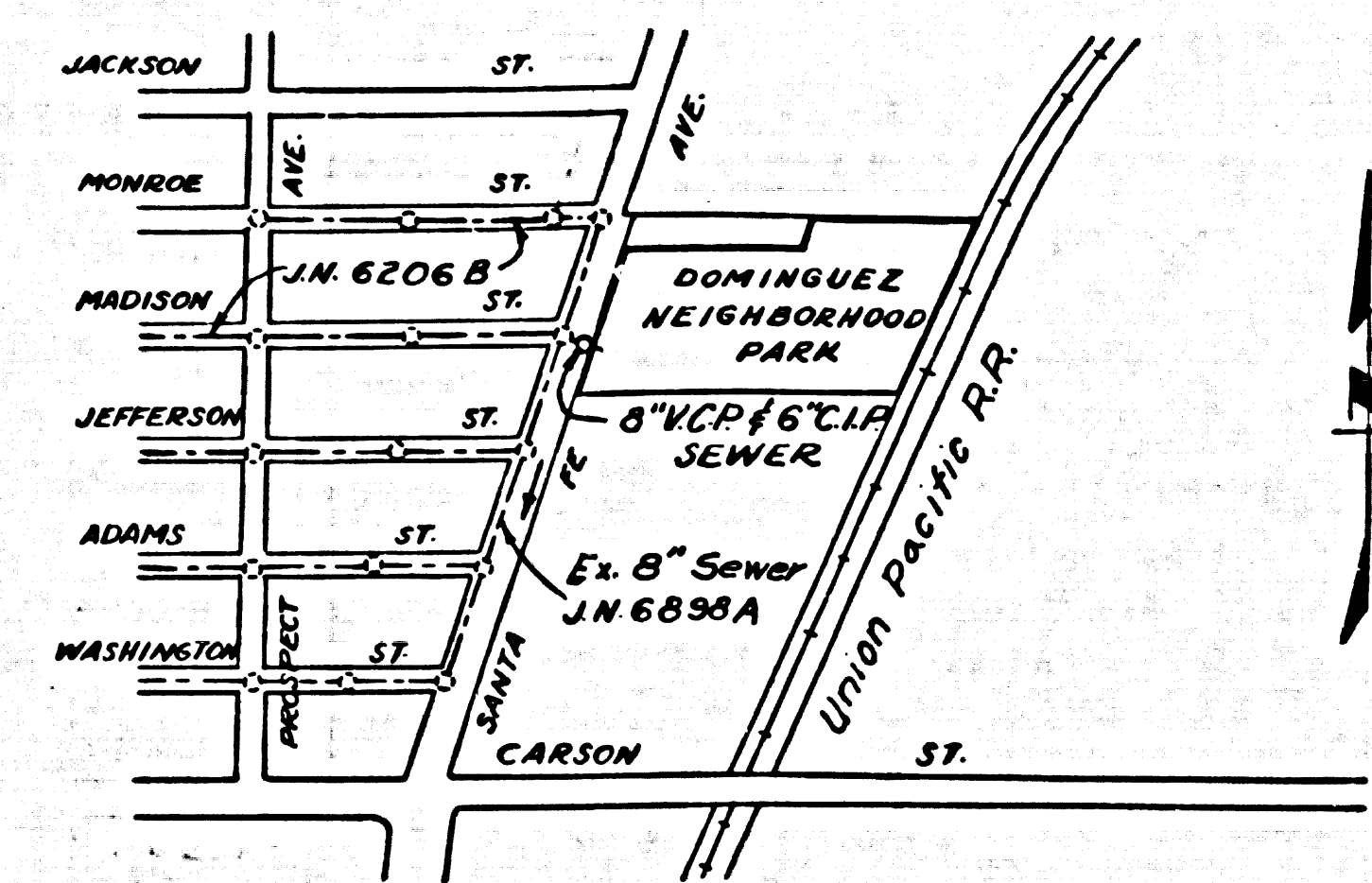
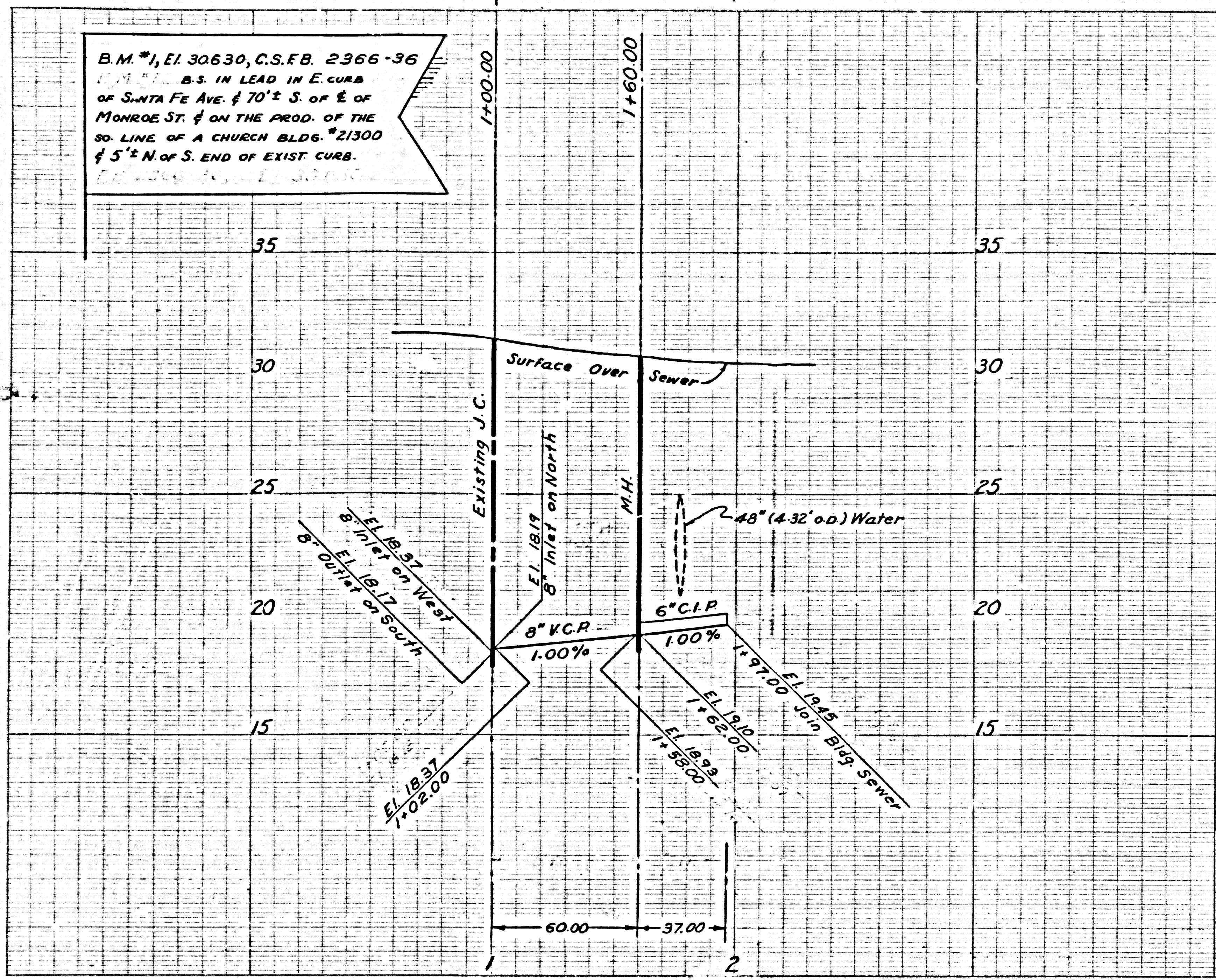


EXTRA DEPTH

B.M. #1, El. 30630, C.S.F.B. 2366-36
 B.S. IN LEAD IN E. CURB
 OF SANTA FE AVE. 70' S. OF E.
 MONROE ST. & ON THE PROD. OF THE
 S.D. LINE OF A CHURCH BLDG. #21300
 5' N. OF S. END OF EXIST. CURB.

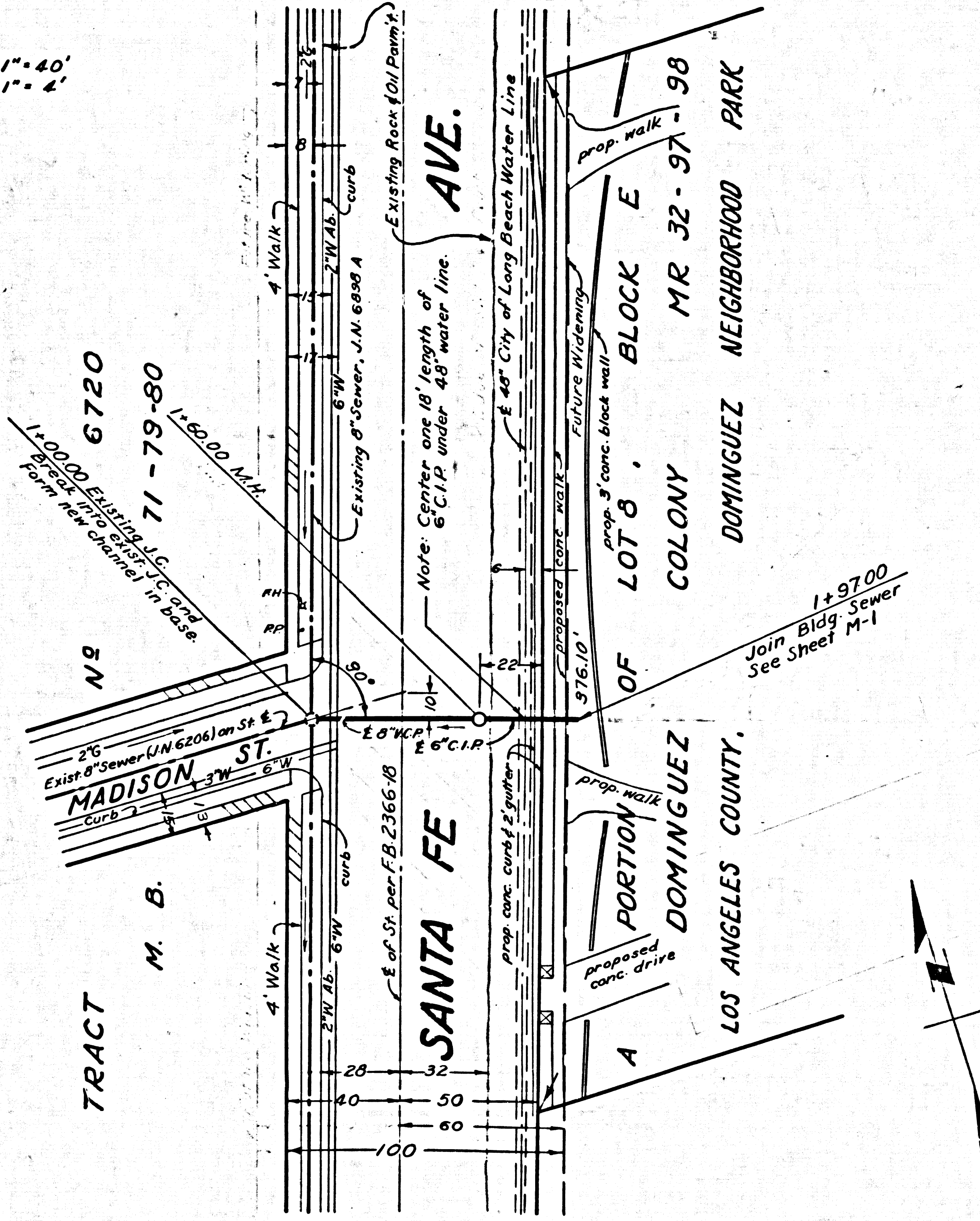


INDEX MAP
 P.C. 6215
 DOMINGUEZ NEIGHBORHOOD PARK
 Scale: 1" = 600'
 W.S. 30 B-2

GENERAL NOTES

1. USE EXTRA STRENGTH V.C.P., EXCEPT AS NOTED. ALL PIPE IS EXTRA DEPTH.
2. THE TOP OF THE M.H. SHALL BE ADJUSTED TO FINISH GRADE.
3. THE M.H. SHALL BE A BRICK SEWER STRUCTURE PER PLAN S-a-104.
4. USE STANDARD MANHOLE FRAME & COVER PER PLAN NO. S-a-117.
5. THE CONTRACTOR SHALL NOTIFY THE CONSTRUCTION DIVISION BY TELEPHONE, MADISON 9-4747, EXT. 81551, AT LEAST 24 HOURS BEFORE STARTING ANY WORK UNDER THIS CONTRACT.
6. LOS ANGELES COUNTY STANDARD SPECIFICATIONS FOR THE CONSTRUCTION OF SANITARY SEWERS, DATED MAY 25, 1962 APPLY IN THE CONSTRUCTION OF THIS PROJECT.
7. USE FORMULA NO. 1, SEC. 54 OF STD. SPECS. TO COMPUTE ALLOWABLE LEAKAGE.
8. USE MECHANICAL COMPRESSION JOINTS FOR ALL V.C.P. PER SPECIFICATIONS SECTIONS 36, 48, AND 49.
9. ELEVATIONS ARE IN FEET ABOVE U.S.C. & G.S. SEA LEVEL DATUM OF 1929.
10. APPROVAL OF THIS PLAN BY THE COUNTY OF LOS ANGELES DOES NOT CONSTITUTE A REPRESENTATION AS TO THE ACCURACY OF THE LOCATION OF OR THE EXISTENCE OR NON-EXISTENCE OF ANY UNDERGROUND UTILITY PIPE OR STRUCTURE WITHIN THE LIMITS OF THIS PROJECT.
11. THIS DRAWING & THE DATA HEREON ARE HEREBY MADE A PART OF THE SPECIFICATIONS.
12. FOR LEGEND SEE PLAN NO. S-a-64.
13. UNIT PRICES FOR ADDITIONAL WORK WHICH MAY BE REQUIRED BUT WHICH CANNOT BE ASCERTAINED IN ADVANCE SHALL BE SUBMITTED IN THE PROPOSAL.
14. SIX INCH C.I.P. SHALL BE CLASS 150 MINIMUM, B15, PER STD. SPECS. SEC. 40. USE LEAD JOINTS.
15. GRADES TO WHICH THIS SEWER IS TO BE CONSTRUCTED ARE SHOWN ON THIS PLAN & PROFILE. AT ALL POINTS BETWEEN DESIGNATED POINTS THE GRADE SHALL BE ESTABLISHED SO AS TO CONFORM TO A STRAIGHT LINE BETWEEN SAID DESIGNATED POINTS.
16. THE CONTRACTOR SHALL NOTIFY MR. HAROLD PLACE, CITY OF LONG BEACH WATER DEPT. (GA-6-5951), AT LEAST 24 HOURS BEFORE EXCAVATING IN THE VICINITY OF THE EXISTING 48" WATER LINE IN SANTA FE AVE.

Scales:
 Horiz. 1" = 40'
 Vert. 1" = 2'



NO CHARGE FOR CONNECTION

REPAVING & TRAFFIC REQUIREMENTS

THE CONTRACTOR SHALL NOTIFY MR. HAROLD SHAW, LOS ANGELES COUNTY ROAD DEPT., 5530 W. 83RD ST., LOS ANGELES 45, CAL., PHONE CRENSHAW 4-8300, AT LEAST 24 HOURS BEFORE STARTING CONSTRUCTION ON THIS PROJECT.

REPAVING OF THE TRENCH WITHIN THE PAVED AREA OF SANTA FE AVE. SHALL BE AS FOLLOWS: FROM THE M.H. AT STA. 1+00.00 EASTWARD TWENTY FEET, PREMIX ROCK & OIL THREE INCHES IN THICKNESS ON FOUR INCHES OF AGGREGATE BASE MATERIAL; FOR THE REMAINING FORTY FEET & OF PAVING, PREMIX ROCK & OIL THREE INCHES IN THICKNESS OVER FOUR INCHES OF ASPHALTIC CONCRETE ON EIGHT INCHES OF AGGREGATE BASE MATERIAL.

BETWEEN THE HOURS OF 8:30 AM & 3:30 PM THE CONTRACTOR SHALL MAINTAIN AT LEAST ONE TWELVE FOOT LANE OF TRAFFIC IN EACH DIRECTION IN SANTA FE AVE. AT ALL OTHER TIMES NO RESTRICTION IN THE EXISTING FACILITIES FOR TRAFFIC WILL BE PERMITTED.

IN ADDITION TO THE ABOVE LANE WIDTHS A MINIMUM CLEARANCE OF 5' TO ANY EXCAVATION & TWO FEET FROM ANY CURB OR OTHER OBSTRUCTION MUST BE MAINTAINED.

NO CONNECTIONS FOR THE DISPOSAL OF INDUSTRIAL WASTES SHALL BE MADE TO SEWERS SHOWN ON THESE DRAWINGS WITHOUT WRITTEN PERMISSION FROM THE CHIEF ENGINEER & GENERAL MANAGER OF THE COUNTY SANITATION DISTRICTS.

APPROVED: JOHN D. PARKHURST CHIEF ENGINEER OF COUNTY SANITATION DISTRICT NO. 8 BY: <i>J. D. Parkhurst</i> OFFICE ENGINEER	DEPARTMENT OF COUNTY ENGINEER SANITATION DIVISION COUNTY OF LOS ANGELES	DATE August 1962	SANITARY SEWER	SPEC. NO. 2240 of 1961
	DESIGNED BY F. J. QUAST TRACED BY F. J. QUAST CHECKED BY Schafer PRIVATE CONTR. 6215 SCALES AS SHOWN	WORK ORDER 9980.02 CAPITAL PROJ. 9980 SHEET NO. SAN-1		
RECOMMENDED: <i>[Signature]</i> ASST. DIVISION ENGINEER	APPROVED: <i>[Signature]</i> DIVISION ENGINEER		DOMINGUEZ NEIGHBORHOOD PARK LOS ANGELES COUNTY, CALIFORNIA	