

B.M. 11-120 Proctor Ave. and 2nd Ave. 103 feet So. & Proctor Ave. in front of House M 32620, 20 feet east of B.C. of Paramet in a wall, protected by a cast iron cover, marked County Surveyors Monument. A 4' dia. C.S. man. set in concrete 10' below the surface. Marked B.M. 11-120 1952 R.F. 63 F.B. 1876-107 1952 Adj. Elev. 294.186 1959 A.J. Elev. 294.165

PUENTE BLDG. DIST. NO. 2

PROFILE ALIGNMENT AND GRADE OF P.C. 6219  
 SANITARY SEWERS PAGE 1  
 TO BE CONSTRUCTED IN JY 0358.19  
 R/W 5/10 PROCTOR AVENUE

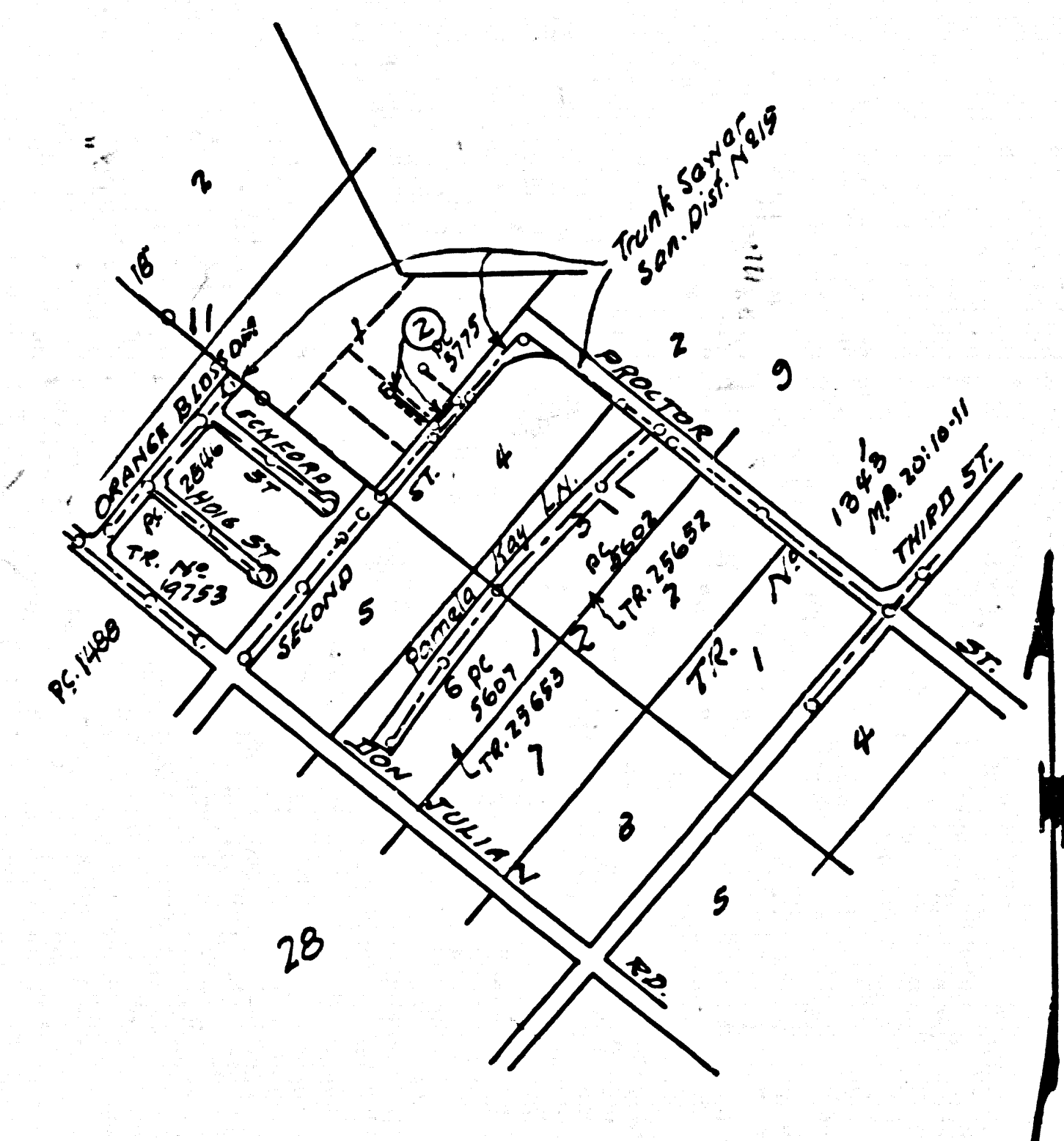
PRIVATE CONTRACT NO. 6219

W.S. 37  
 SHEET 2 PAGES  
 SCALE: VERT. 1"=4' HORIZ. 1"=40' JUNE, 1962  
 PREPARED IN THE OFFICES OF

CYRUS M. BELL - ENGINEER  
 REG. C. E. NO. 28339

32550

FOR LEGEND SEE PLAN NO. S-A-64



INDEX MAP  
 Scale 1"=600'  
 P.C. 6219

- NOTES:
1. PROVIDE STAKES ON THE PROPERTY LINE OR PROPERTY LINES PRODUCED AT RIGHT ANGLES TO THE SEWER LINE AT THE CENTER LINE OF EACH MANHOLE.
  2. NO REPRESENTATIVE OF THE COUNTY ENGINEER WILL SURVEY OR LAY OUT ANY PORTION OF THE WORK.
  3. THE OWNER OR HIS AUTHORIZED REPRESENTATIVE SHALL FURNISH THE COUNTY ENGINEER WITH GRADE SHEETS AND STATIONING FOR ALL HOUSE LATERALS AND Y BRANCHES AND SHALL PROVIDE STAKES FOR THEM AT THEIR PROPER LOCATIONS WITH STATIONING PLAINLY MARKED. ANY CHANGE IN LOCATION SHALL BE REQUESTED IN WRITING BY THE OWNER OR HIS REPRESENTATIVE.
  4. STANDARD SPECIFICATIONS DATED MAY 25 1962 APPLY IN THE CONSTRUCTION OF THIS PROJECT.
  5. NO REVISIONS SHALL BE MADE IN THESE PLANS WITHOUT THE APPROVAL OF THE COUNTY ENGINEER.
  6. USE STANDARD MANHOLE FRAMES AND COVERS, S-117.
  7. USE EXTRA STRENGTH PIPE FOR ALL PIPE STANDARD DEPTH EXCEPT AS NOTED.
  8. USE MECHANICAL COMPRESSION JOINTS FOR ALL VCP PER SPECS., SECS 36, 40 & 49.
  9. RESURFACE ALL TRENCH WITHIN PAVED AREA TO MEET L.A. COUNTY ROAD DEPT. OR CALIF. STATE HIGHWAY REQUIREMENTS IN ACCORDANCE WITH PERMITS.
  10. ENCASE FOUR FEET OF SEWER AT POINTS OF INTERFERENCE WITH POLES, CASE III, S-172.
  11. ALL MANHOLES SHALL BE BRICK SEWER STRUCTURES 5'-0" DIA. PRECAST CONCRETE MANHOLES PER S-198 OR S-173 MAY BE USED AS AN ALTERNATE IN LOCATION APPROVED BY THE COUNTY ENGINEER.
  12. FOR ALLOWABLE LEAKAGE TEST USE FORMULA NO. 1, SPECS. SEC. 54.
  13. MANHOLE TOPS IN UNIMPROVED RIGHTS-OF-WAY TO BE SIX INCHES ABOVE FINISHED GRADE.
  14. THE CONTRACTOR SHALL NOTIFY THE CONSTRUCTION & SAFETY DIVISION BY TELEPHONE, MADISON 9-474, EXT-8192 AT LEAST TWENTY-FOUR HOURS BEFORE STARTING ANY WORK UNDER THIS CONTRACT.

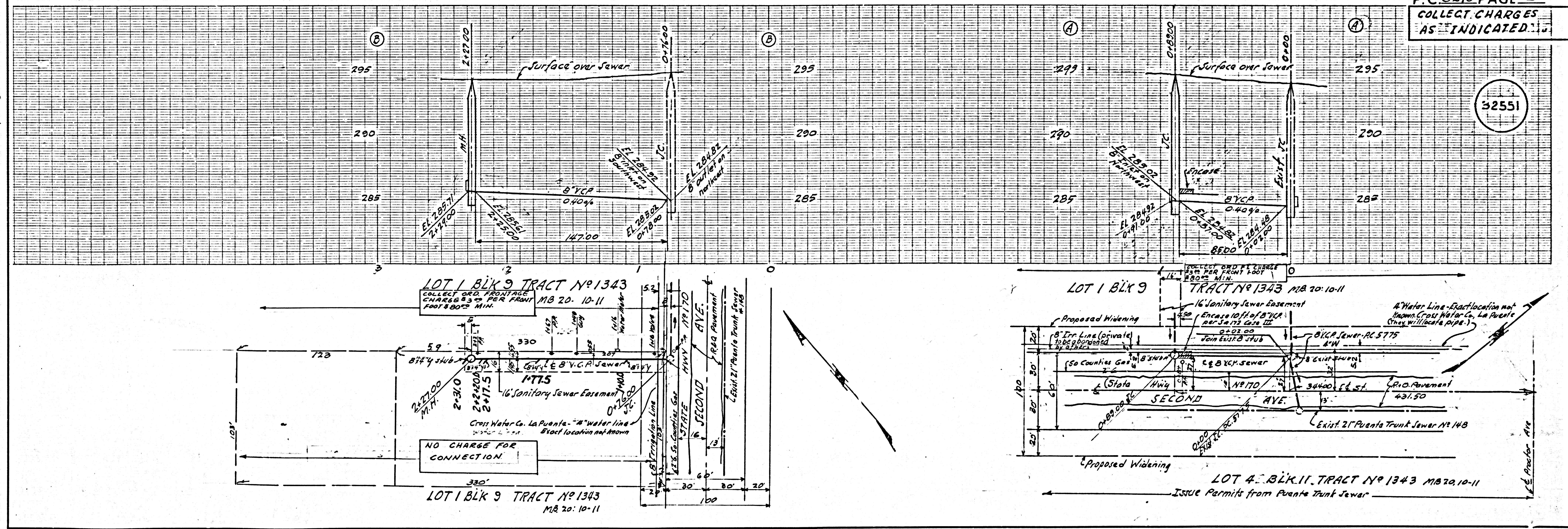
COLLECT CHARGES AS INDICATED  
 Approved K. Olson 8-9-62

NO CONNECTIONS FOR THE DISPOSAL OF INDUSTRIAL WASTES SHALL BE MADE TO SEWERS SHOWN ON THESE DRAWINGS WITHOUT WRITTEN PERMISSION FROM THE CHIEF ENGINEER AND GENERAL MANAGER OF THE COUNTY SANITATION DISTRICTS.

NOTE:  
 GRADES TO WHICH THIS IMPROVEMENT IS TO BE CONSTRUCTED ARE SHOWN ON PLANS AND PROFILES. GRADE POINTS FOR TOP OF CURBS, CENTER LINE OF STREETS, OR CENTER LINE OF ALLEYS ARE SHOWN BY CIRCLES ON PROFILES. AT ALL POINTS BETWEEN DESIGNATED POINTS THE GRADE SHALL BE ESTABLISHED SO AS TO CONFORM TO A STRAIGHT LINE DRAWN BETWEEN SAID DESIGNATED POINTS.  
 ELEVATIONS ARE IN FEET ABOVE U.S.C. & G.S. SEA LEVEL DATUM OF 1929.  
 THIS DRAWING AND THE DATA HEREON ARE HEREBY MADE A PART OF THE SPECIFICATIONS.  
 BEFORE WORK CAN BE STARTED THE CONTRACTOR MUST OBTAIN A PERMIT TO EXCAVATE IN COUNTY STREETS FROM THE L.A. COUNTY ROAD DEPT., DISTRICT OFFICE NO. 1, AND PAY A FEE TO THE COUNTY ENGINEER, ROOM 310 COUNTY STREET, BLDG. 106 W. SECOND ST. SUFFICIENT TO COVER THE COST OF CONSTRUCTION INSPECTION AND RECORD PLANS.  
 APPROVAL OF THIS PLAN BY THE COUNTY OF LOS ANGELES DOES NOT CONSTITUTE A REPRESENTATION AS TO THE ACCURACY OF THE LOCATION OF OR THE EXISTENCE OR NON-EXISTENCE OF ANY UNDERGROUND UTILITY PIPE, OR STRUCTURE WITHIN THE LIMITS OF THIS PROJECT. THIS NOTE APPLIES TO ALL PAGES.  
 IF WORK IS TO BE DONE IN A STATE HIGHWAY, A PERMIT MUST BE OBTAINED FROM THE STATE OF CALIFORNIA, DIVISION OF HIGHWAYS, 128 SOUTH SPRING STREET.

COUNTY OF LOS ANGELES, CALIFORNIA  
 APPROVED JOHN A. LAMBIE, COUNTY ENGINEER APPROVED J.P. FAYETTE, CHIEF ENGINEER  
 BY *Ries K...* ASST. SANITATION ENGINEER BY *J.P. Fayette* OFFICE ENGINEER  
 CHECKED BY *Henry Lee* OFFICE OF COUNTY ENGINEER, REG. C. E. NO. 12453

P.C. 6219 PAGE 2  
 COLLECT CHARGES AS INDICATED



32551