

INDEX MAP
TRACT NO. 26882

P.C. 6220

SCALE 1"=600'

NOTE: NUMBERS IN CIRCLES INDICATE PAGE NUMBERS

SL. 620 1703.901 - 1958
SET ROAD DEPARTMENT BENCH MARK TAG IN CENTER.
18" 59' CONCRETE SLAB ± 105' NORTH C/L SAN FRANCISCO CANYON ROAD ± 60' EAST C/L BOUQUET CANYON ROAD PRODUCED ± 85' EAST. RR # 1059474E.

NO CHARGE FOR CONNECTIONS
Murray 2/26/63

NEWHALL BLDG. DIST. NO. 82

PROFILE ALIGNMENT AND GRADE OF P.C. 6220
SANITARY SEWERS PAGE 1
TO BE CONSTRUCTED IN
TRACT No. 26882

PRIVATE CONTRACT NO. 6220

W.S. 62
SHEETS: 8 PAGES
SCALE: VERT. 1"=4'
HORIZ. 1"=40'
MARCH, 1963
PREPARED IN THE OFFICES OF
MCINTIRE & QUIROS INC.
By: J. Quiros
REG. C.E. NO. 8583

33644

- NOTES:
1. PROVIDE STAKES ON THE PROPERTY LINE OR PROPERTY LINES PRODUCED AT RIGHT ANGLES TO THE SEWER LINE AT THE CENTER LINE OF EACH MANHOLE.
 2. NO REPRESENTATIVE OF THE COUNTY ENGINEER WILL SURVEY OR LAY OUT ANY PORTION OF THE WORK.
 3. THE PRIVATE ENGINEER SHALL FURNISH THE COUNTY ENGINEER WITH GRADE SHEETS AND STATIONINGS FOR ALL HOUSE LATERALS AND Y BRANCHES AND SHALL PROVIDE STAKES FOR THEM AT THEIR PROPER LOCATIONS WITH STATIONINGS PLAINLY MARKED. ALL HOUSE LATERALS SHALL BE CONSTRUCTED A STRAIGHT ALIGNMENT AT RIGHT ANGLES FROM THE MAIN LINE SEWER EXCEPT AS SHOWN ON THE PLANS. HOUSE LATERALS FROM CHIMNEYS SHALL NOT HAVE AN ANGLE OF LESS THAN 45° WITH THE MAIN LINE SEWER. ANY CHANGE IN ALIGNMENT SHALL BE REQUESTED IN WRITING BY THE PRIVATE ENGINEER.
 4. THE PRIVATE ENGINEER SHALL FURNISH THE HOUSE LATERAL DEPTH AT THE PROPERTY LINE BELOW TOP OF CURB ELEVATION FROM EACH HOUSE LATERAL ON THE GRADE SHEET.
 5. NO REVISIONS SHALL BE MADE IN THESE PLANS WITHOUT THE APPROVAL OF THE COUNTY ENGINEER.
 6. USE STANDARD MANHOLE FRAMES AND COVERS, S-111, EXCEPT AS NOTED.
 7. USE EXTRA STRENGTH PIPE. ALL PIPE IS STANDARD DEPTH EXCEPT AS NOTED.
 8. USE MECHANICAL COMPRESSION JOINTS FOR ALL V.C.P. JOINTS PER SPEC'S 36 (4) B OR MECHANICAL COMPRESSION JOINTS PER SPEC. SECT. 36.
 9. RESURFACE ALL TRENCHES WITH 4" PAVED AREAS TO MEET L.A. COUNTY ROAD DEPT. OR CALIF. STATE HIGHWAY REQUIREMENTS IN ACCORDANCE WITH PERMITS.
 10. ENCASE FOUR FEET OF SEWER AT POINTS OF INTERFERENCE WITH POLES, CASE III, S-172.
 11. HOUSE LATERALS TO BE CONSTRUCTED WITH INVERTS AT PROPERTY LINE 6 FEET BELOW CURB GRADE EXCEPT AS NOTED.
 12. FOR ALLOWABLE LEAKAGE TEST USE FORMULA NO. 2, SPEC'S, SEC. 34.
 13. MANHOLE TOPS IN UNIMPROVED RIGHTS-OF-WAY TO BE SIX INCHES ABOVE FINISHED GRADE.
 14. THE CONTRACTOR SHALL NOTIFY THE CONSTRUCTION DIVISION BY TELEPHONE, MADISON 9-471, AT LEAST TWENTY-FOUR HOURS BEFORE STARTING ANY WORK UNDER THIS CONTRACT.
 15. THE CONTRACTOR SHALL SATISFY HIMSELF OF ALL SUBSTRUCTURES AND SHALL BE RESPONSIBLE FOR THEIR LOCATION AND MAINTENANCE.
 16. WHEREVER GROUND WATER IS ENCOUNTERED DURING THE CONSTRUCTION OF THE SEWERS THE V.C.P. JOINTS SHALL BE OF JOINT COMPOUND PER SPEC'S, SECS 33 (4) B OR MECHANICAL COMPRESSION JOINTS PER SPEC. SECT. 36.
 17. MANHOLES SHALL BE BRICK SEWER STRUCTURES, S-0-104 PRECAST CONCRETE MANHOLES PER S-0-135, OR S-0-173 MAY BE USED AS AN ALTERNATE IN LOCATION APPROVED BY THE COUNTY ENGINEER.
 18. IF A POWER POLE IS WITHIN THREE FEET OF THE SEWER, THE SEWER SHALL BE ENCASED PER S-0-172, CASE III, TWO FEET ON EITHER SIDE FROM THE POINT OF INTERFERENCE.
 19. IF DURING THE COURSE OF CONSTRUCTION IT IS DETERMINED THAT THERE IS LESS THAN FOUR FEET OF COVER OVER THE TOP OF A MAIN LINE OR HOUSE LATERAL V.C.P. SEWER WHICH IS NOT INDICATED ON THE PLANS THE PIPE SHALL BE ENCASED PER S-0-172, CASE III UNLESS OTHERWISE APPROVED BY THE COUNTY ENGINEER.
 20. ALL STATE AND LOCAL TRENCH SAFETY ORDERS WILL BE RIGIDLY ENFORCED.

NOTE:
GRADES TO WHICH THIS IMPROVEMENT IS TO BE CONSTRUCTED ARE SHOWN ON PLANS AND PROFILES. GRADE POINTS FOR TOP OF CURBS, CENTER LINE OF STREETS, OR CENTER LINE OF ALLEYS ARE SHOWN BY CIRCLES ON PROFILES. AT ALL POINTS BETWEEN SAID DESIGNATED POINTS THE GRADE SHALL BE ESTABLISHED SO AS TO CONFORM TO A STRAIGHT LINE DRAWN BETWEEN SAID DESIGNATED POINTS.
ELEVATIONS ARE IN FEET ABOVE U.S.C. & G.S. SEA LEVEL DATUM OF 1929.
THIS DRAWING AND THE DATA HEREON ARE HEREBY MADE A PART OF THE SPECIFICATIONS.
WORK SHALL BE CONSTRUCTED ACCORDING TO STANDARD SPECIFICATIONS DATED MAY 20, 1958 ON FILE IN THE OFFICE OF THE COUNTY ENGINEER AND SHALL BE PROSECUTED ONLY IN PRESENCE OF THE COUNTY ENGINEER. BEFORE WORK CAN BE STARTED, THE CONTRACTOR MUST OBTAIN A PERMIT TO EXCAVATE IN COUNTY STREETS FROM THE L. A. COUNTY ROAD DEPT., DISTRICT OFFICE NO. 3, AND PAY A FEE TO THE COUNTY ENGINEER, ROOM 310 WEST SECOND STREET OR ANTELOPE VALLEY REGIONAL OFFICE SUFFICIENT TO COVER THE COST OF CONSTRUCTION INSPECTION AND RECORD PLANS.
APPROVAL OF THIS PLAN BY THE COUNTY OF LOS ANGELES DOES NOT CONSTITUTE A REPRESENTATION AS TO THE ACCURACY OF THE LOCATION OR THE EXISTENCE OR NON-EXISTENCE OF ANY UNDERGROUND UTILITY PIPE, OR STRUCTURE WITHIN THE LIMITS OF THIS PROJECT. THIS NOTE APPLIES TO ALL PAGES.
IF WORK IS TO BE DONE IN A STATE HIGHWAY, A PERMIT MUST BE OBTAINED FROM THE STATE OF CALIFORNIA, DIVISION OF HIGHWAYS, 120 SOUTH BRIDGE STREET.

COUNTY OF LOS ANGELES, CALIFORNIA

JOHN A. LAMBIE, COUNTY ENGINEER J.D. PARKHURST, CHIEF ENGINEER

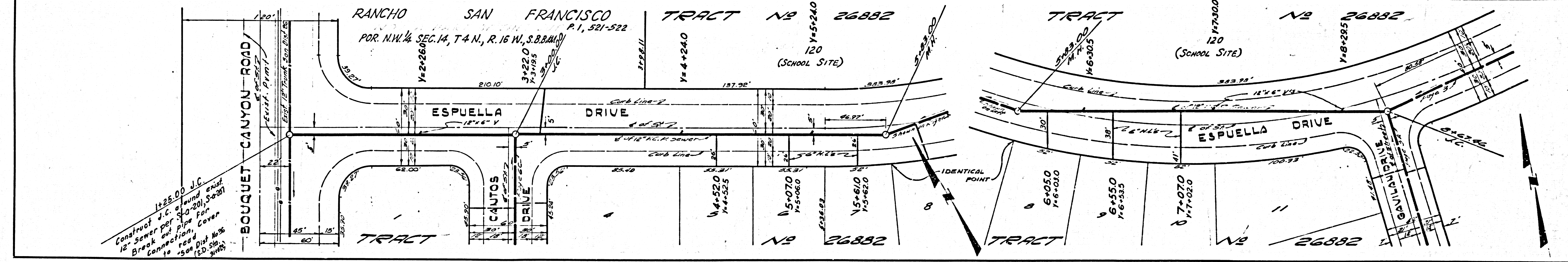
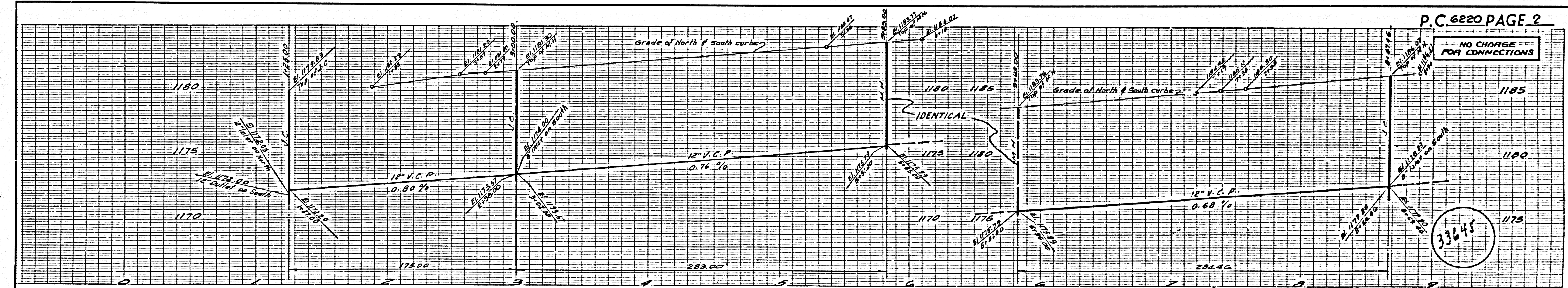
APPROVED BY: [Signature] ASSISTANT SANITATION ENGINEER APPROVED BY: [Signature] OFFICE ENGINEER

SUBMITTED BY: [Signature] REGIONAL ENGINEER

CHECKED BY: [Signature] 5-8-63
REG. C.E. NO. 10443

NO CONNECTIONS FOR THE DISPOSAL OF INDUSTRIAL WASTES SHALL BE MADE TO SEWERS SHOWN ON THESE DRAWINGS WITHOUT WRITTEN PERMISSION FROM THE CHIEF ENGINEER AND GENERAL MANAGER OF THE COUNTY SANITATION DISTRICT.

BEFORE BREAKING INTO ANY EXISTING STRUCTURE AND BEFORE FINAL ACCEPTANCE OF THIS WORK, COUNTY SANITATION DISTRICT (DU 4-1281) SHALL BE NOTIFIED IN ORDER THAT REQUIRED INSPECTION CAN BE MADE.



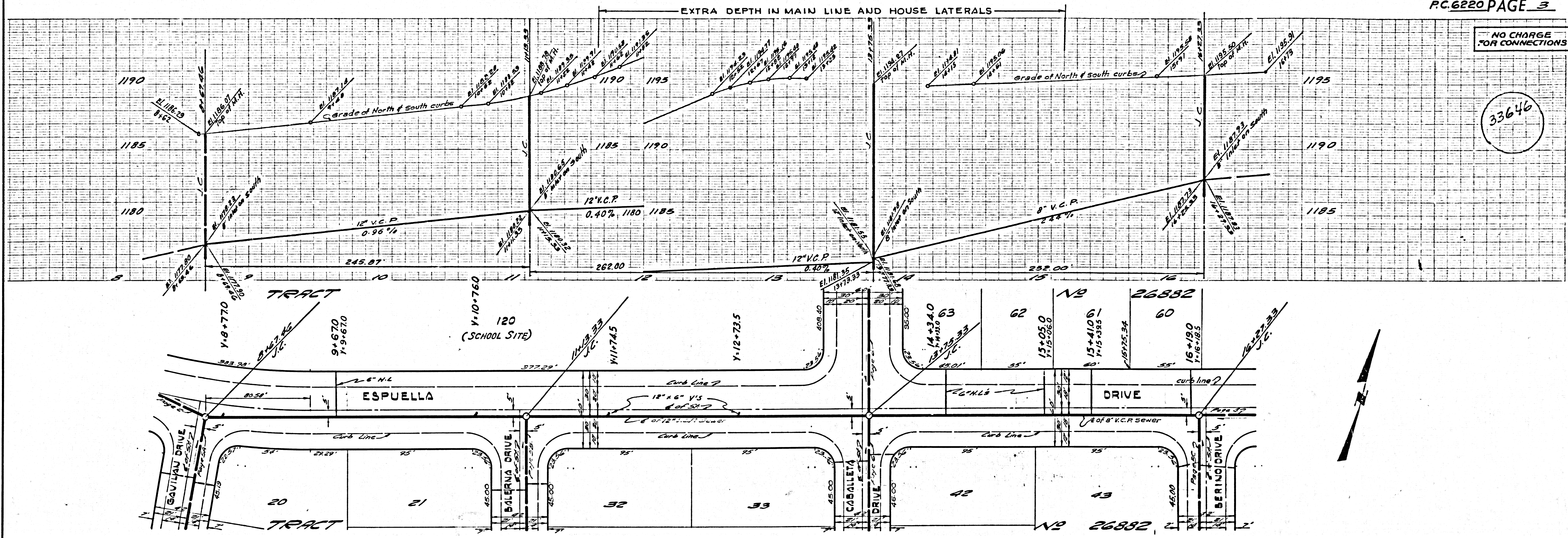
P.C. 6220 PAGE 2

NO CHARGE FOR CONNECTIONS

33645

NO CHARGE FOR CONNECTIONS

33646



NO CHARGE FOR CONNECTIONS

33647

