

Bench Mark: B.M. S.G. 1881 Beginning @ E. Int. San Jose Hills Rd. & Temple Ave, thence N'ly along San Jose Hills Rd. ± 0.6 mi. E 30' South approx. E 6' ± 5' S of 3rd pole, a R.D.B.M. mon. in well 8" dia., 2" IR, 2' S, 3' up Covina Quad 1955 Elev. 749.146

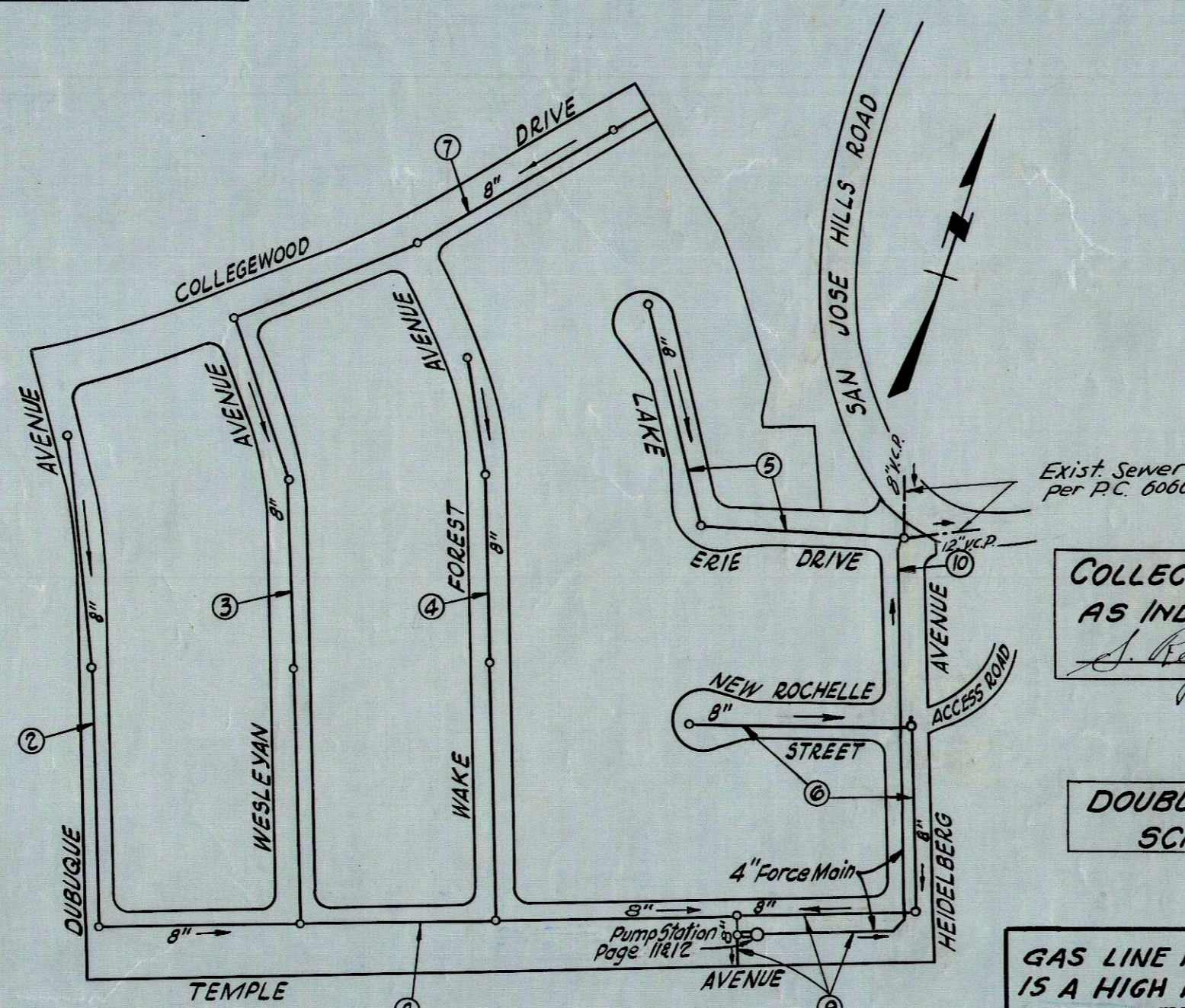
DOUBLE SCALE CITY OF WALNUT BLDG. DIST. NO. 205

PROFILE ALIGNMENT AND GRADE OF P.C. 6221 SANITARY SEWERS PAGE 1 & SEWAGE PUMP STATION TO BE CONSTRUCTED IN TRACT NO. 27137

PRIVATE CONTRACT NO. 6221

W.S. 39 7 SHEETS; 12 PAGES SCALE: VERT. 1" = 6' HORIZ. 1" = 40' APRIL, 1962 PREPARED IN THE OFFICES OF ENGINEERING SERVICE CORPORATION

32552



INDEX MAP TRACT No. 27137 Scale: 1" = 200' P.C. 6221

COLLECT CHARGES AS INDICATED

DOUBLE VERTICAL SCALE

GAS LINE IN TRACT No. 27137 IS A HIGH PRESSURE GAS MAIN. CONTRACTOR TO NOTIFY THE SO. COUNTIES GAS CO. 24 HRS. PRIOR TO EXCAVATION. PHONE National 33561 DISTRIBUTION DEPT.

NO CONNECTIONS FOR THE DISPOSAL OF INDUSTRIAL WASTES SHALL BE MADE TO SEWERS SHOWN ON THESE DRAWINGS WITHOUT WRITTEN PERMISSION FROM THE CHIEF ENGINEER AND GENERAL MANAGER OF THE COUNTY SANITATION DISTRICTS.

- NOTES: PROVIDE STAKES ON THE PROPERTY LINE OR PROPERTY LINES PRODUCED AT RIGHT ANGLES TO THE SEWER LINE AT THE CENTER LINE OF EACH MANHOLE. NO REPRESENTATIVE OF THE CITY ENGINEER WILL SURVEY OR LAYOUT ANY PORTION OF THE WORK. THE OWNER OR HIS AUTHORIZED REPRESENTATIVE SHALL FURNISH THE CITY ENGINEER WITH GRADE SHEETS AND STATION FOR ALL HOUSE LATERALS AND Y BRANCHES AND SHALL PROVIDE STAKES FOR THEM AT THEIR PROPER LOCATIONS WITH STATIONING PLAINLY MARKED. ANY CHANGE IN LOCATION SHALL BE REQUESTED IN WRITING BY THE OWNER OR HIS REPRESENTATIVE. NO REVISIONS SHALL BE MADE IN THESE PLANS WITHOUT THE APPROVAL OF THE CITY ENGINEER. 1. USE STANDARD MANHOLE FRAMES AND COVERS, S.A-117. 2. USE EXTRA STRENGTH V.C.P. PIPE, ALL PIPE STANDARD DEPTH, EXCEPT AS NOTED. 3. USE CEMENT MORTAR, OR MECHANICAL COMPRESSION JOINTS *FOR ALL V.C.P. JOINTS IN MAIN LINE PER SPECS. SEC. 36 & 39. 4. RESURFACE ALL TRENCH WITHIN PAVED AREA TO MEET L.A. COUNTY ROAD DEPT. OR CALIF. STATE HIGHWAY DEPT. REQUIREMENTS IN ACCORDANCE WITH PERMITS. 5. ENCASE FOUR FEET OF SEWER AT POINTS OF INTERFERENCE WITH POLES, CASE III 5-0-172. 6. HOUSE LATERALS TO BE CONSTRUCTED WITH INVERTS AT PROPERTY LINE 6 FEET BELOW CURB GRADE. 7. ALL STRUCTURES SHALL BE BRICK SEWER STRUCTURES, S.A-104, PRECAST CONCRETE MANHOLES PER 5-0-136 OR 5-0-173 MAY BE USED AS AN ALTERNATE IN LOCATIONS APPROVED BY THE COUNTY ENGINEER. 8. FOR ALLOWABLE LEAKAGE TEST USE FORMULA NO. 1 PER SPECS. SEC. 31 IN MAIN LINE. 9. MANHOLE TOPS IN UNIMPROVED RIGHTS-OF-WAY TO BE 6" ABOVE FINISHED GRADE. 10. THE PRIVATE ENGINEER IS TO FURNISH THE HOUSE LATERAL DEPTH AT THE PROPERTY LINE BELOW THE TOP OF CURVE ELEVATION FOR EACH HOUSE LATERAL ON THE GRADE SHEET. 11. THE CONTRACTOR SHALL NOTIFY THE CONSTRUCTION DIVISION BY TELEPHONE (MADISON 9-4747, EXT. 8155) AT LEAST 24 HOURS BEFORE STARTING ANY WORK UNDER THIS CONTRACT. 12. STANDARD SPECIFICATIONS DATED MAY 25, 1962 SHALL APPLY IN THE CONSTRUCTION OF THIS PROJECT AND THE SPECIAL SPECIFICATIONS FOR P.C. 6221, PUMP STATION. 13. USE MECHANICAL COMPRESSION JOINTS FOR ALL V.C.P. JOINTS IN HOUSE LATERALS PER SPECS. SEC. 36. 14. A.C. PIPE AND ITS FITTINGS SHALL COMPLY WITH SEC. 42 OF STANDARD SPECIFICATIONS.

ENGINEERING SERVICE CORPORATION 1127 W. WASHINGTON BLVD. LOS ANGELES 15, CALIF. RI. 9-7281

REVISIONS	TRACED BY	DES'G'D BY	CK'D BY	SUBMITTED
	C.F.-C.R.	L.D.		

W. O. NO.	DWG. NO.	DATE	SCALE	L. B.	F. B.
6805-78		MAY 1962	As Shown		

NOTE: GRADES TO WHICH THIS IMPROVEMENT IS TO BE CONSTRUCTED ARE SHOWN ON PLANS AND PROFILES. GRADE POINTS FOR TOP OF CURBS, CENTER LINE OF STREETS, OR CENTER LINE OF ALLEYS ARE SHOWN BY CIRCLES ON PROFILES. AT ALL POINTS BETWEEN DESIGNATED POINTS THE GRADE SHALL BE ESTABLISHED SO AS TO CONFORM TO A STRAIGHT LINE DRAWN BETWEEN SAID DESIGNATED POINTS. ELEVATIONS ARE IN FEET ABOVE U.S.C. & G.S. SEA LEVEL DATUM OF 1929. THIS DRAWING AND THE DATA HEREON ARE HEREBY MADE A PART OF THE SPECIFICATIONS. WORK SHALL BE CONSTRUCTED ACCORDING TO SPECIFICATIONS ON FILE IN THE OFFICE OF THE CITY ENGINEER AND SHALL BE PROSECUTED ONLY IN THE PRESENCE OF THE CITY ENGINEER. BEFORE WORK CAN BE STARTED, THE CONTRACTOR MUST OBTAIN A PERMIT TO EXCAVATE IN CITY STREETS FROM THE DIST. OFFICE NO. 1 AND PAY A FEE TO THE CITY OF WALNUT, 20334 CARREY ROAD, CITY OF WALNUT, SUFFICIENT TO COVER THE COST OF CONSTRUCTION INSPECTION AND RECORD PLANS. APPROVAL OF THIS PLAN BY THE CITY OF WALNUT DOES NOT CONSTITUTE A REPRESENTATION AS TO THE ACCURACY OF THE LOCATION OF OR THE EXISTENCE OR NON-EXISTENCE OF ANY UNDERGROUND UTILITY PIPE, OR STRUCTURE WITHIN THE LIMITS OF THIS PROJECT. THIS NOTE APPLIES TO ALL PAGES. IF WORK IS TO BE DONE IN A STATE HIGHWAY, A PERMIT MUST BE OBTAINED FROM THE STATE OF CALIFORNIA, DIVISION OF HIGHWAYS, 120 SOUTH SPRING STREET.

CITY OF WALNUT, CALIFORNIA APPROVED, JOHN A. LAMBIE, CITY ENGINEER APPROVED, J.D. PARKHURST, CHIEF ENGINEER CO. SAN. DIST. NO. 21 BY, Richard E. Huber, SANITATION ENGINEER BY, J. J. Matthews, OFFICE ENGINEER CHECKED BY, Henry Lee, 8-8-62 OFFICE OF COUNTY ENGINEER, REG. C. E. NO. 10443

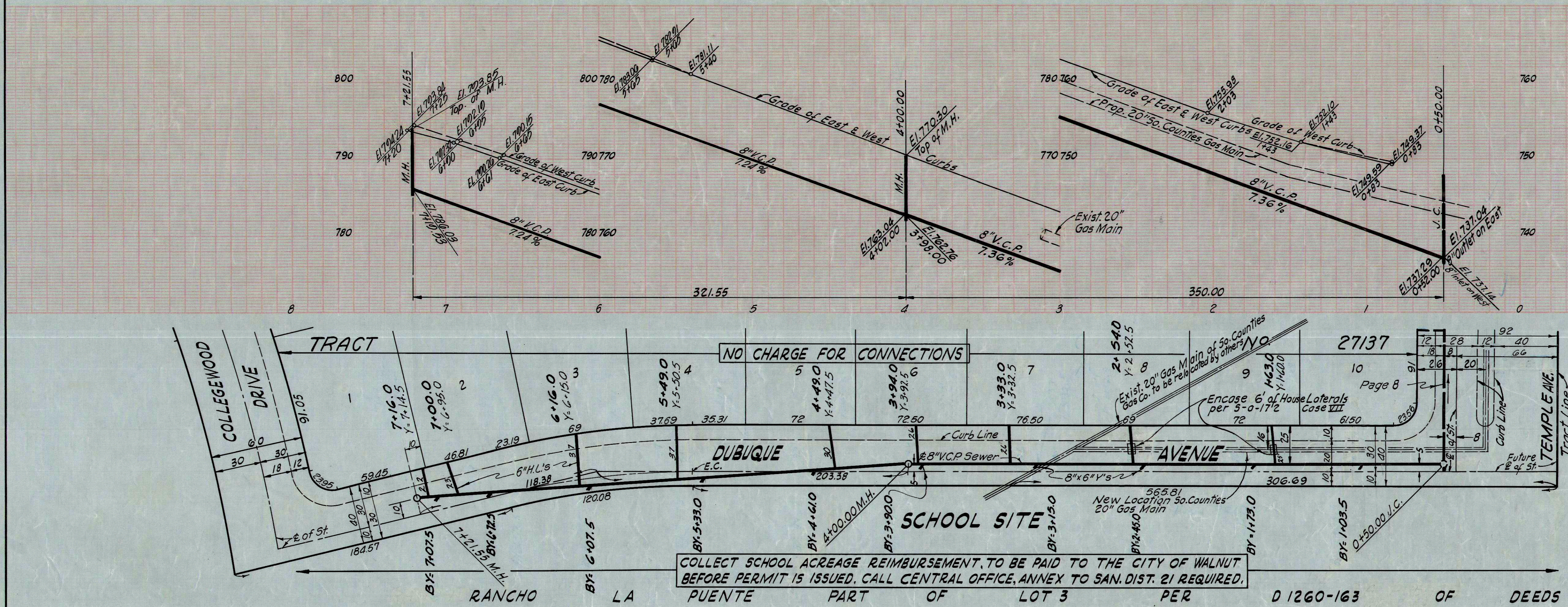
AS-BUILT

PRIVATE ENGINEER'S NOTICE TO CONTRACTOR THE EXISTENCE AND LOCATION OF ANY UNDERGROUND UTILITY LINES AS STRUCTURES SHOWN ON THESE PLANS ARE OBTAINED BY A SEARCH OF THE AVAILABLE RECORDS. TO THE BEST OF OUR KNOWLEDGE THERE ARE NO EXISTING UTILITIES EXCEPT AS SHOWN ON THIS MAP. THE CONTRACTOR IS REQUIRED TO TAKE PRECAUTIONARY MEASURES TO PROTECT THE UTILITY LINES SHOWN AND ANY OTHER LINES NOT OF RECORD OR NOT SHOWN ON THIS DRAWING.

P.C. 6221 PAGE 2 DOUBLE SCALE

COLLECT CHARGES AS INDICATED

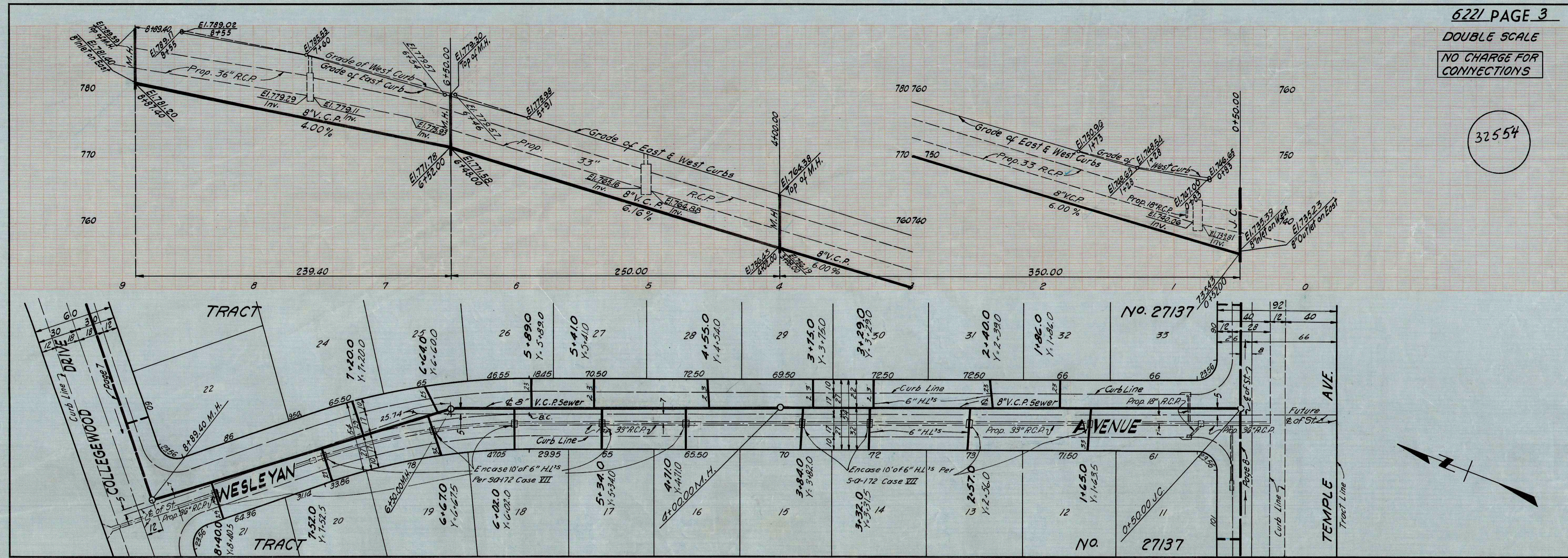
32553



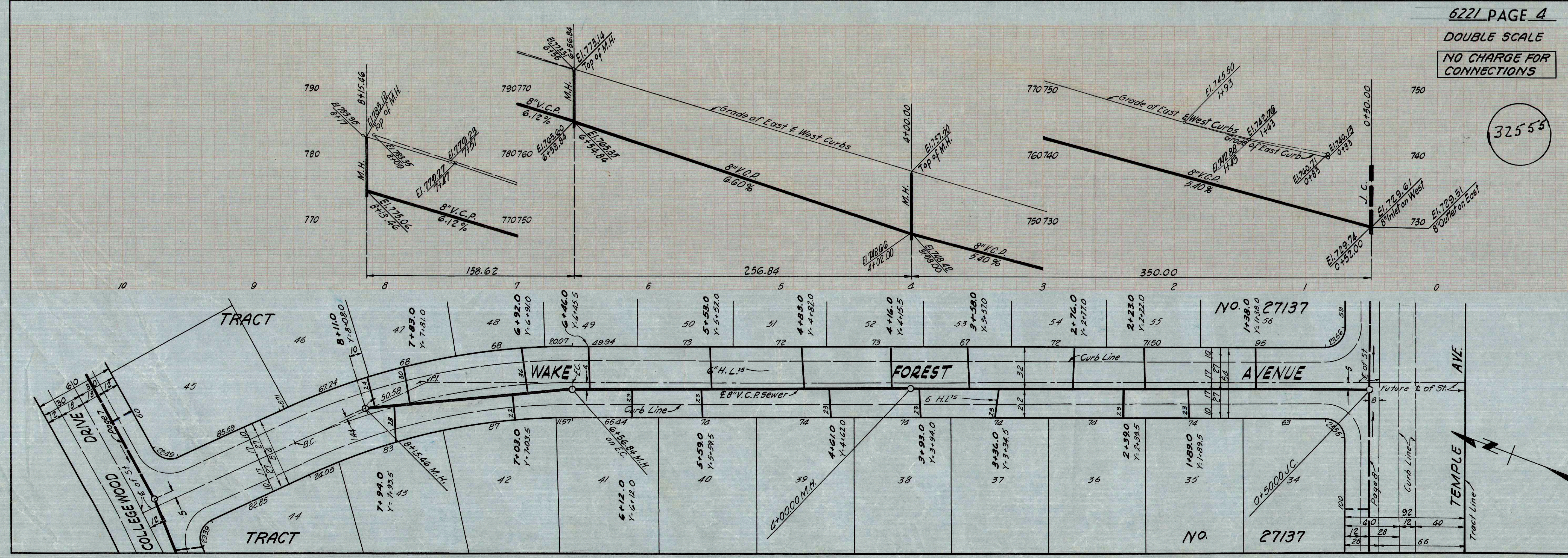
NO CHARGE FOR CONNECTIONS COLLECT SCHOOL ACREAGE REIMBURSEMENT, TO BE PAID TO THE CITY OF WALNUT BEFORE PERMIT IS ISSUED. CALL CENTRAL OFFICE, ANNEX TO SAN. DIST. 21 REQUIRED.

D 1260-163 OF DEEDS

6221 PAGE 3
DOUBLE SCALE
NO CHARGE FOR CONNECTIONS

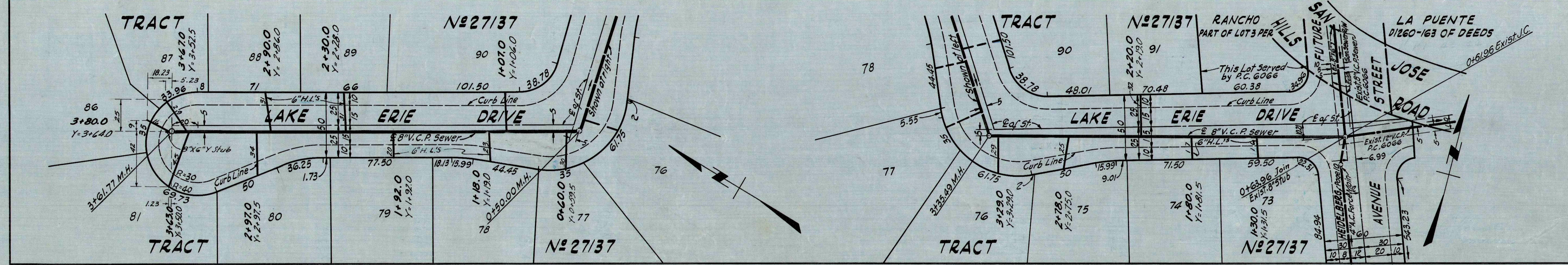
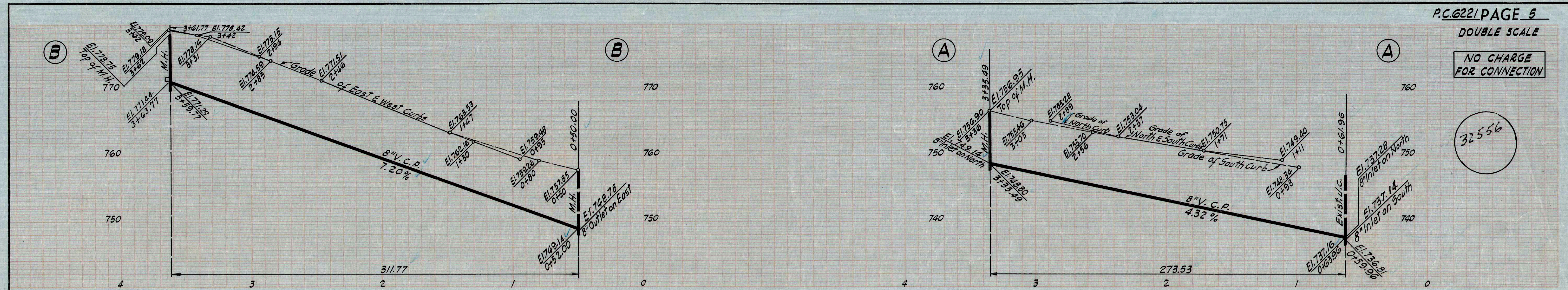


6221 PAGE 4
DOUBLE SCALE
NO CHARGE FOR CONNECTIONS

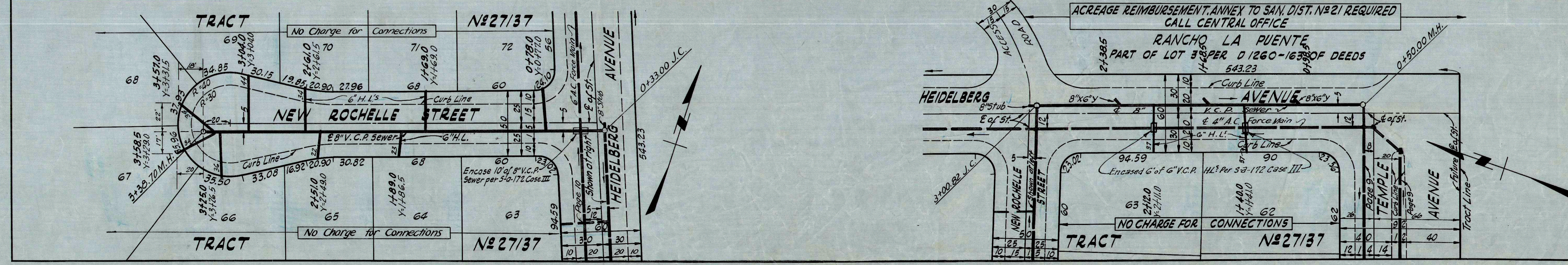
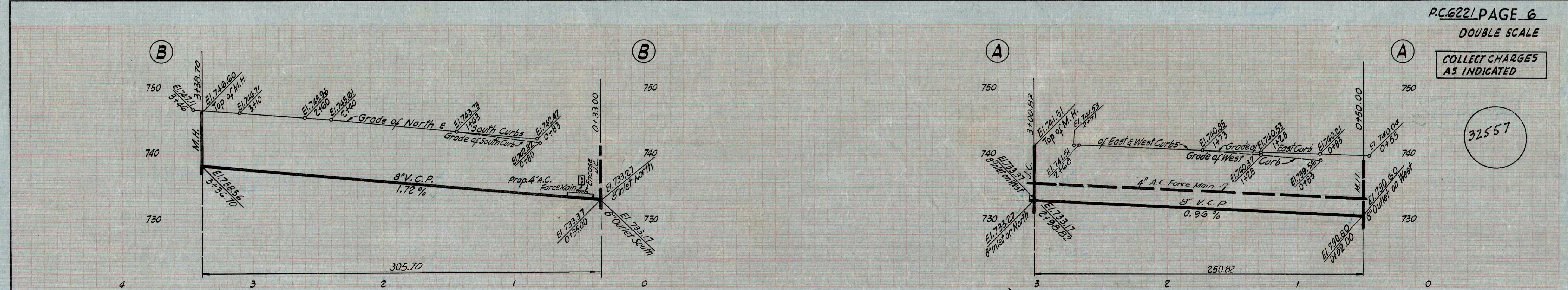


TRACT NO. 5113 BC. 0551
W.P.C. 80

NO CHARGE FOR CONNECTION

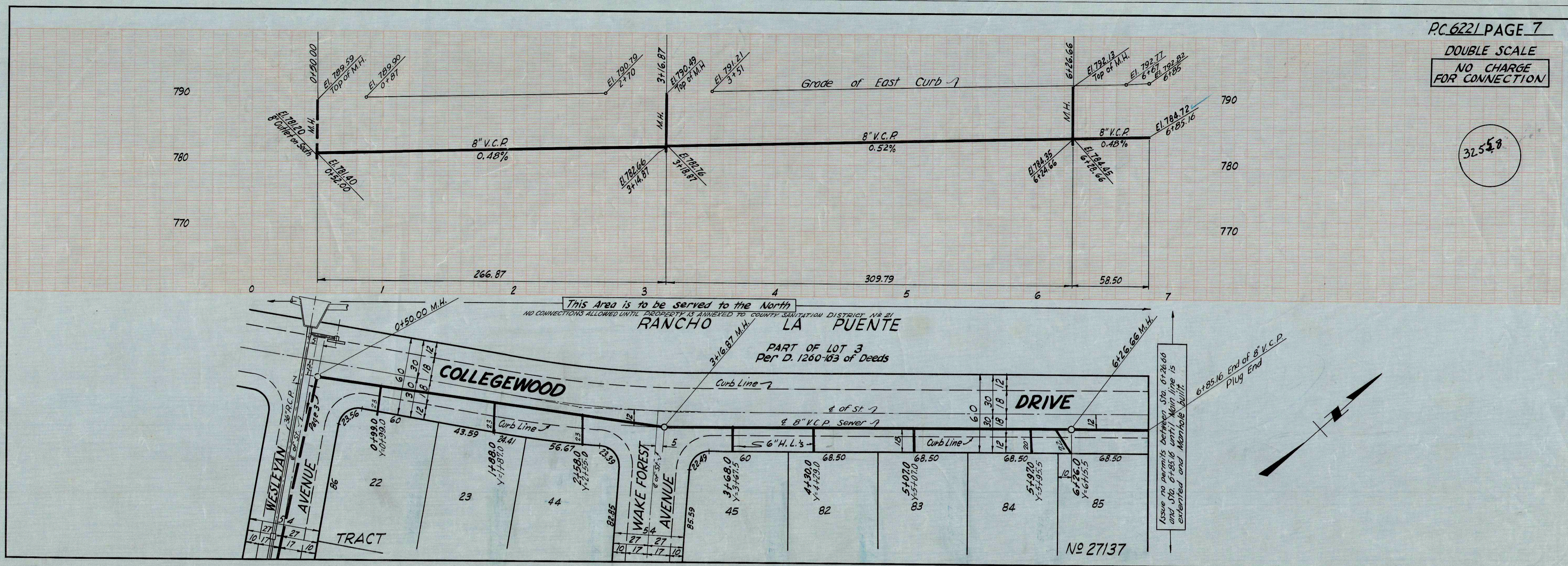


COLLECT CHARGES AS INDICATED

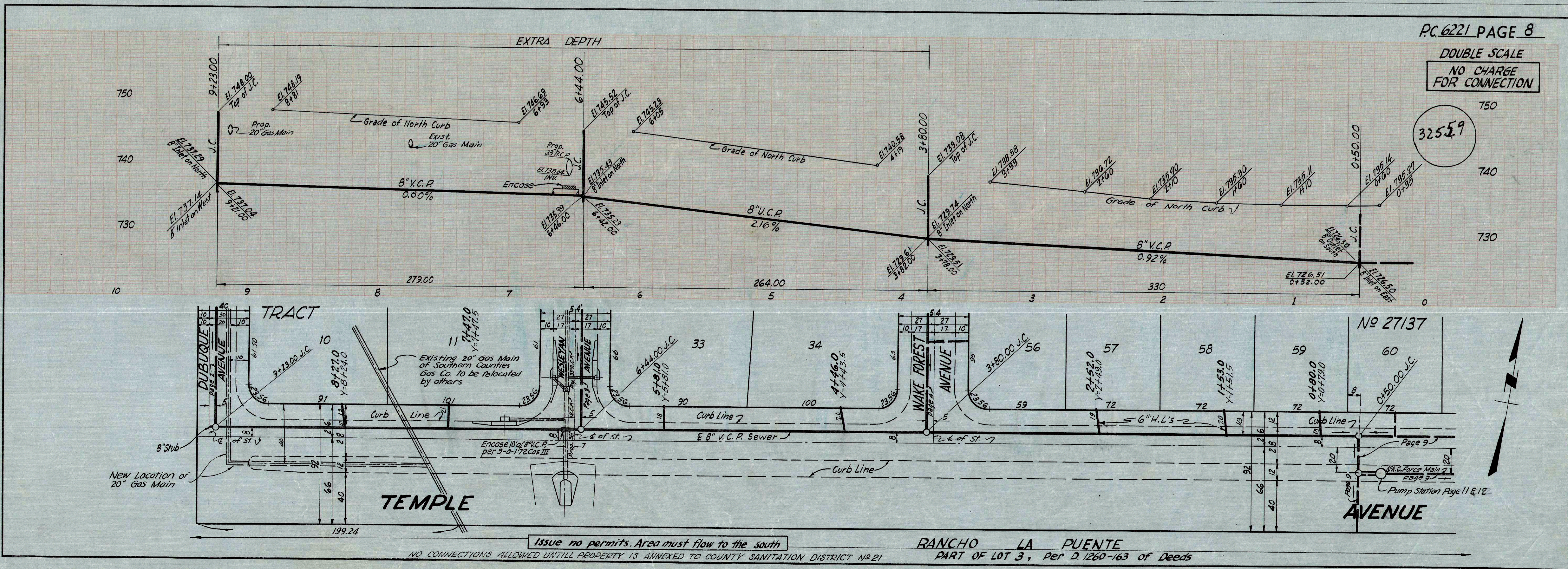


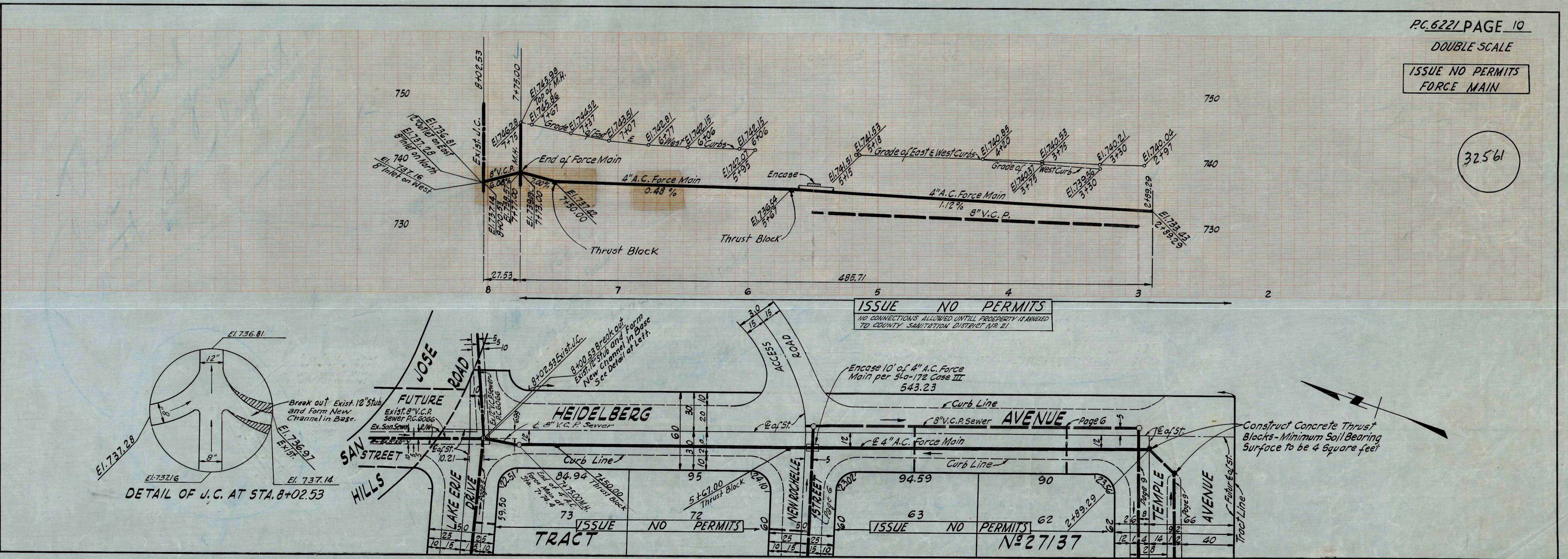
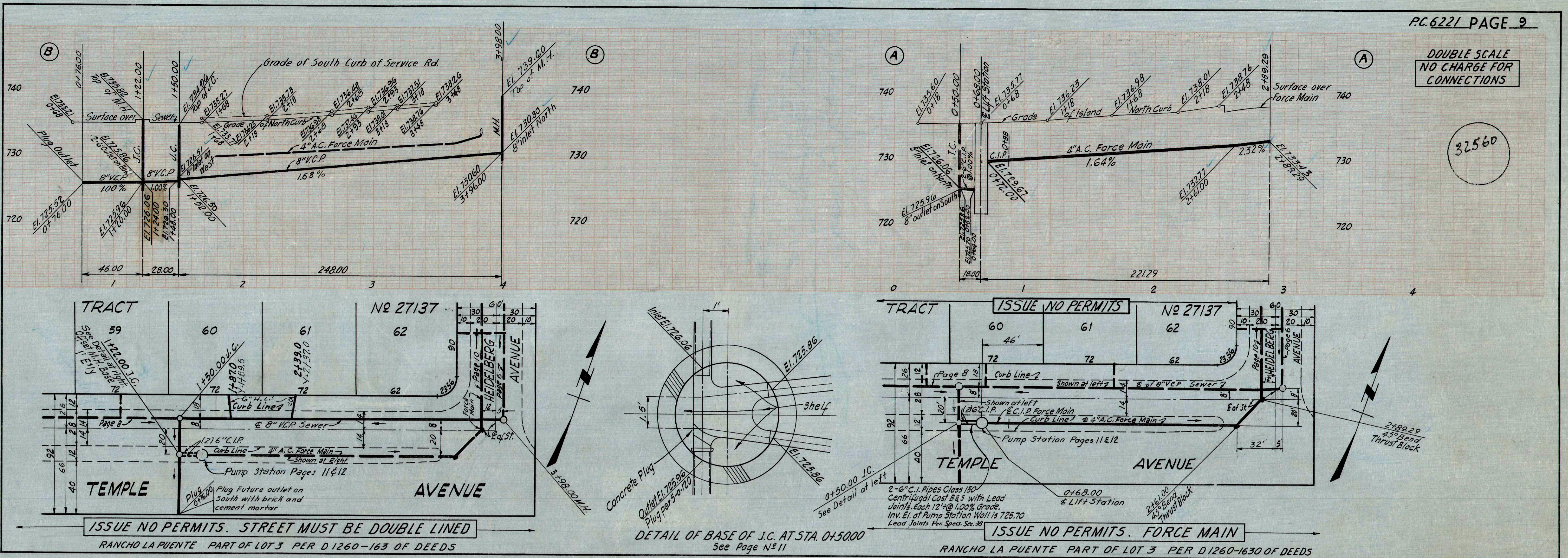
W.P.C. 80

DOUBLE SCALE
NO CHARGE
FOR CONNECTION

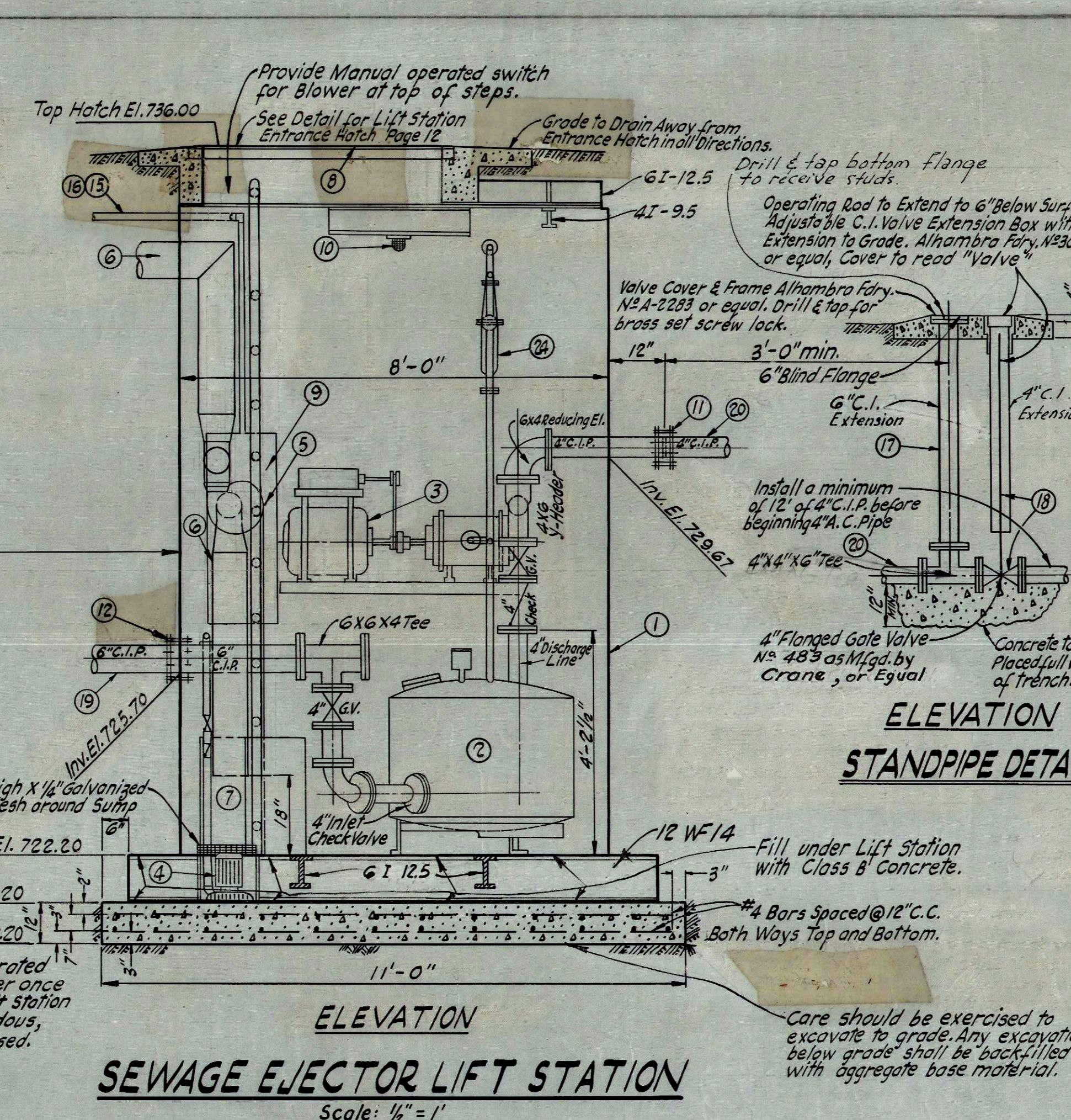
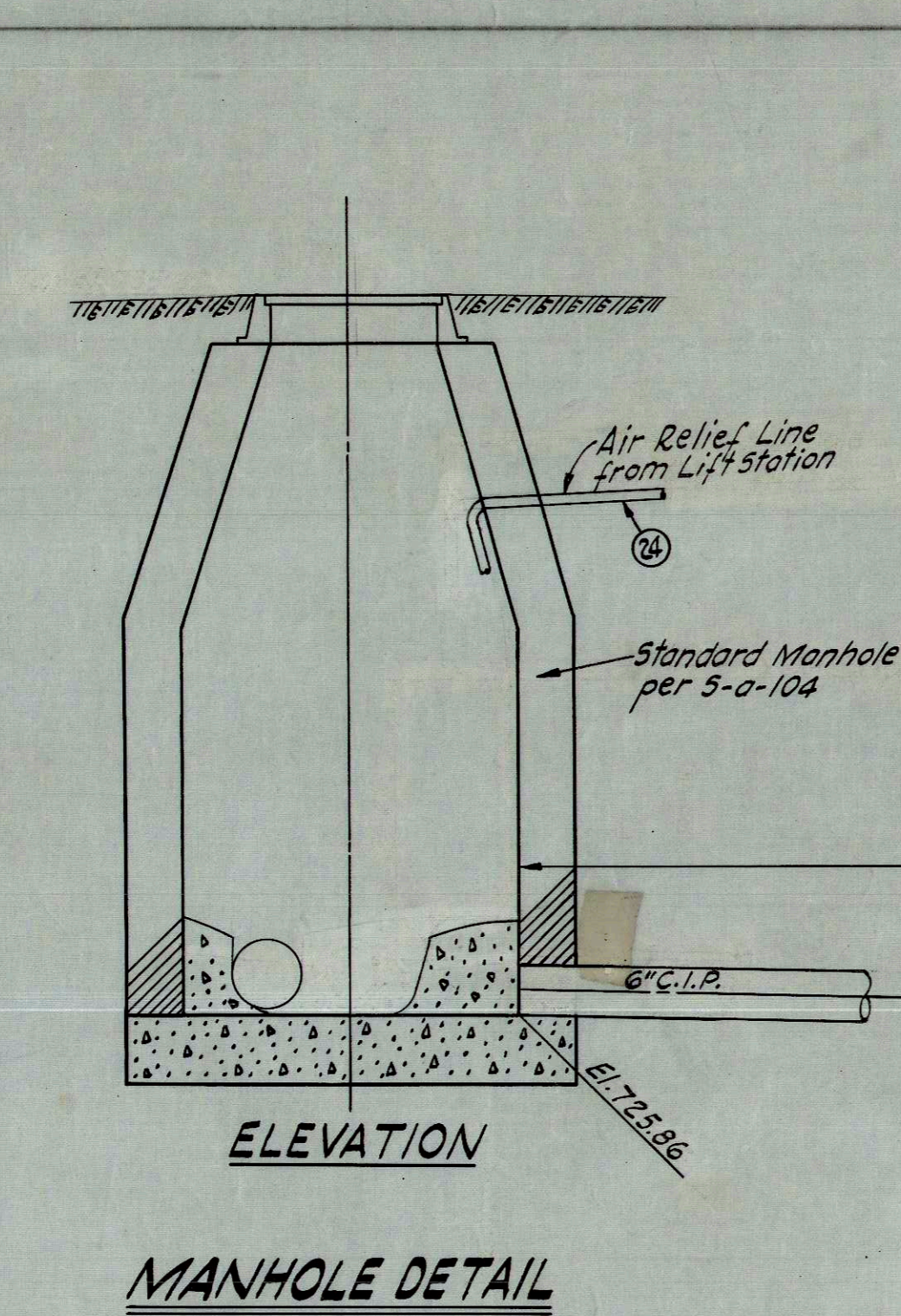
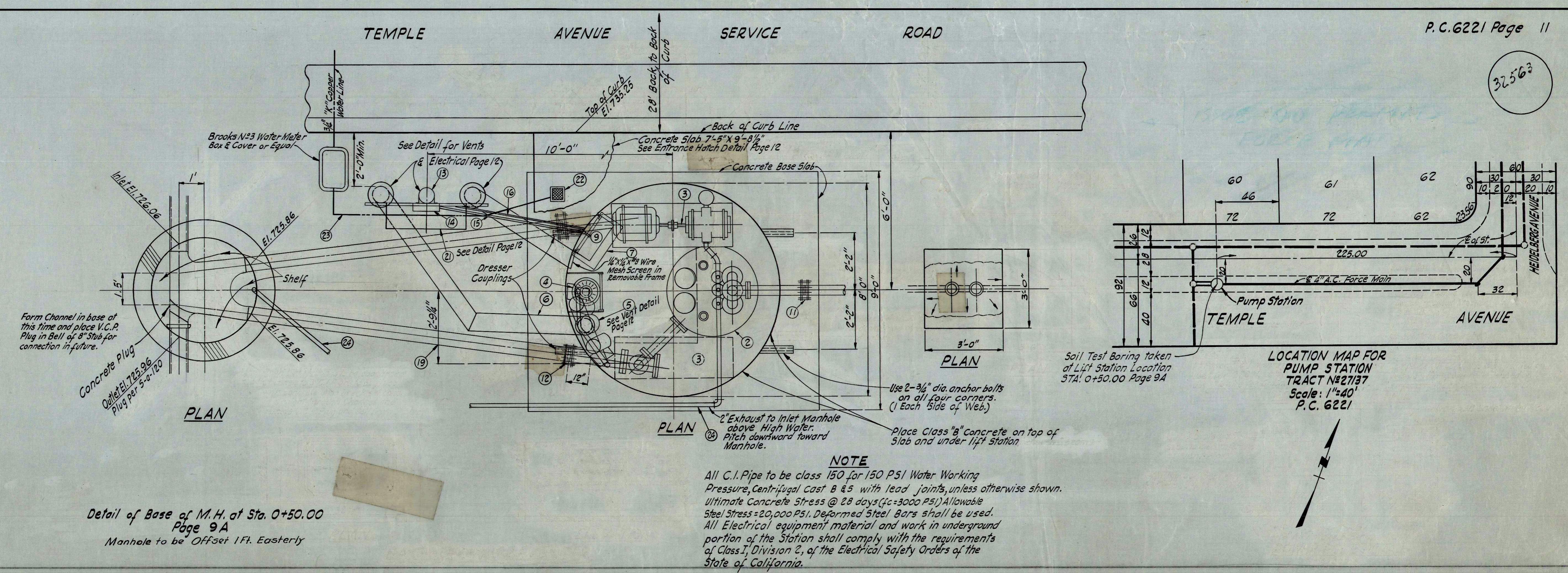


DOUBLE SCALE
NO CHARGE
FOR CONNECTION





32563



Item No.	Quantity	DESCRIPTION
1.	1	Yeomans Underground Steel Pump Chamber for Factory Built Lift Station.
2.	1	Yeoman's Module-Matic Dual Pneumatic Expulsor capable of delivering 100 GPM @ 40' TDH.
3.	2	Yeoman's Rotary air-cooled N#80-A Compressor with Inlet Silencer & 7 1/2 H.P. U.S. or Sterling, 1500 RPM, 220V, 3φ, 60 Cycle Motor.
4.	1	Submersible Sump Pump, Yeoman's all brass, Model W#604, 1/3 H.P., 110 V, 1φ, 60 Cycle capable of delivering 3300 GPM at 15' TDH with brass Gate Valve & Brass Swing Check Valve in discharge line.
5.	2	Buffalo Forge Co. Model "C" Vent Fan, 1/2 H.P., 110V, 1φ 60 Cycle, with non-sparking aluminum wheel, explosion proof, to deliver 410 cfm at 1/2" S.P.
6.	50	3" Galvanized suction and exhaust piping, complete without attached to service pole. A.C. Piping Underground.
7.	1	Dehumidifier, Capable of removing 3 gal. of Moisture per 24 hrs. (113V, 1φ, 60 Cyl.)
8.	1	"Bico" Door, Type A-30.
9.	1	Nema I Control Panel.
10.	2	100W Vapor Proof Lighting Fixtures.
11.	2	4" Dresser Couplings Fig. #38
12.	2	6" Dresser Couplings Fig. #38
13.	1	25 l.f. Creosoted Wooden Pole.
14.	2	Meters and Switches mounted on Service Pole.
15.	20	3/4" Rigid Conduit Electrical.
16.	20	1" Rigid Conduit Electrical.
17.	1	4" C.I.P. Standpipe Valve Cover and Frame.
18.	1	4" Flanged Gate Valve, Crane No. 483 or equal, w/box and cover, Alhambra Foundry N#3004 or equal.
19.	20	6" C.I.P. (Outside Station)
20.	15	4" C.I.P. (Outside Station)
21.	1	Reduced Pressure Backflow preventer, Beeco Model 12" or equal in steel box mounted on service pole.
22.	1	Street Washer, Alhambra Foundry A-392-A.
23.	20	3/4" "K" Copper Service Line, Complete with Meter, Meter box and Cover.
24.	2	Galvanized Steel Air Exhaust Piping.

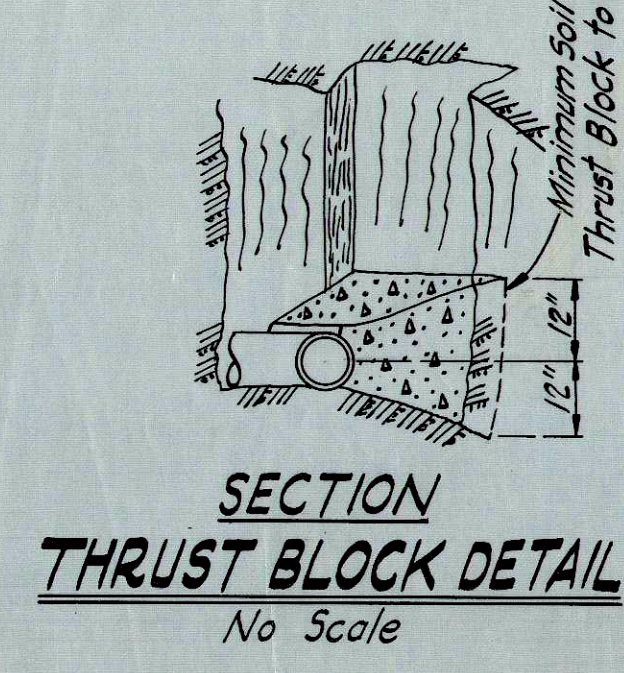
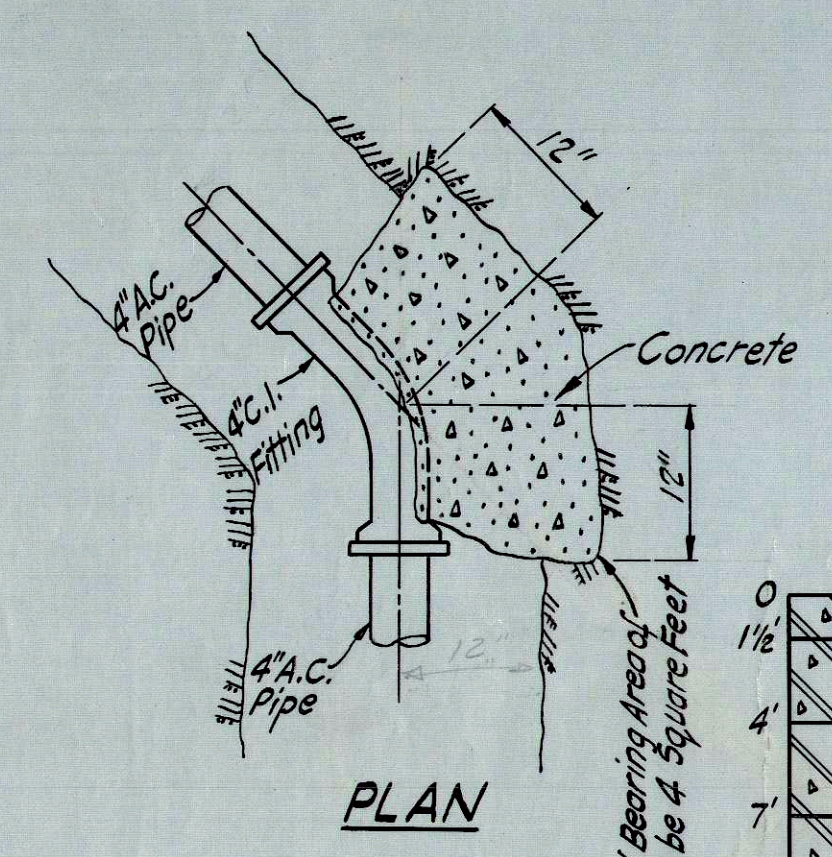
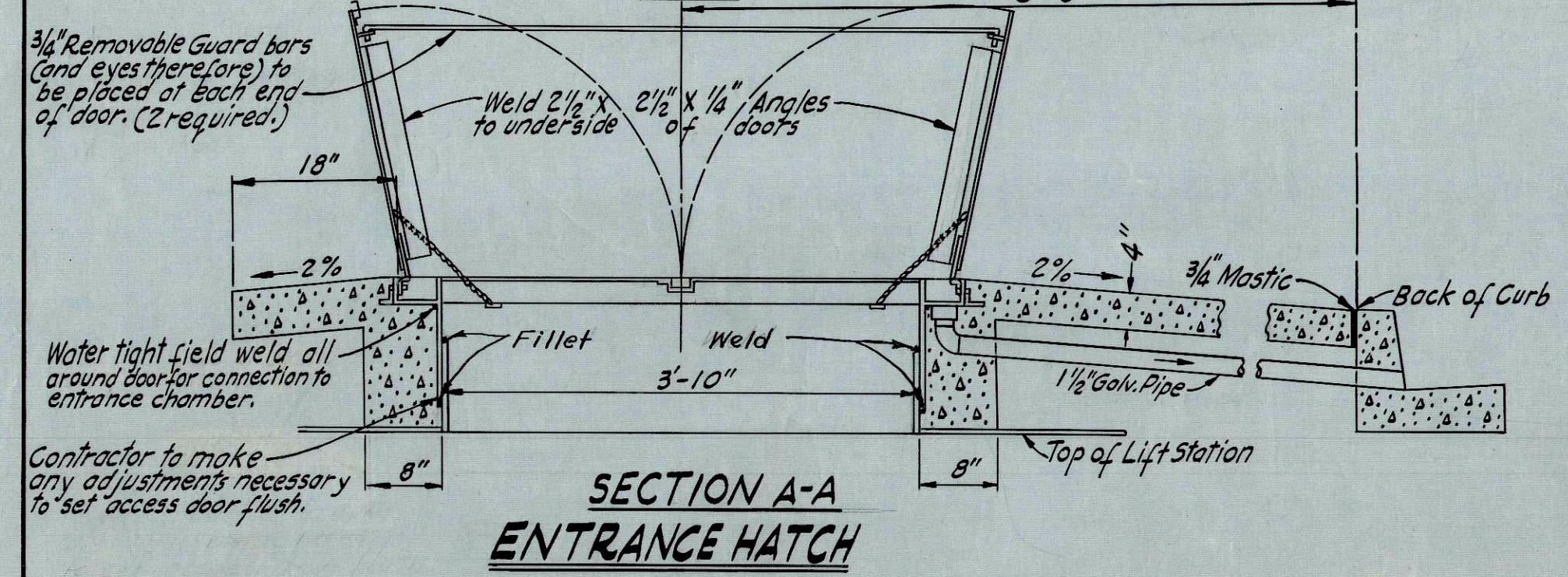
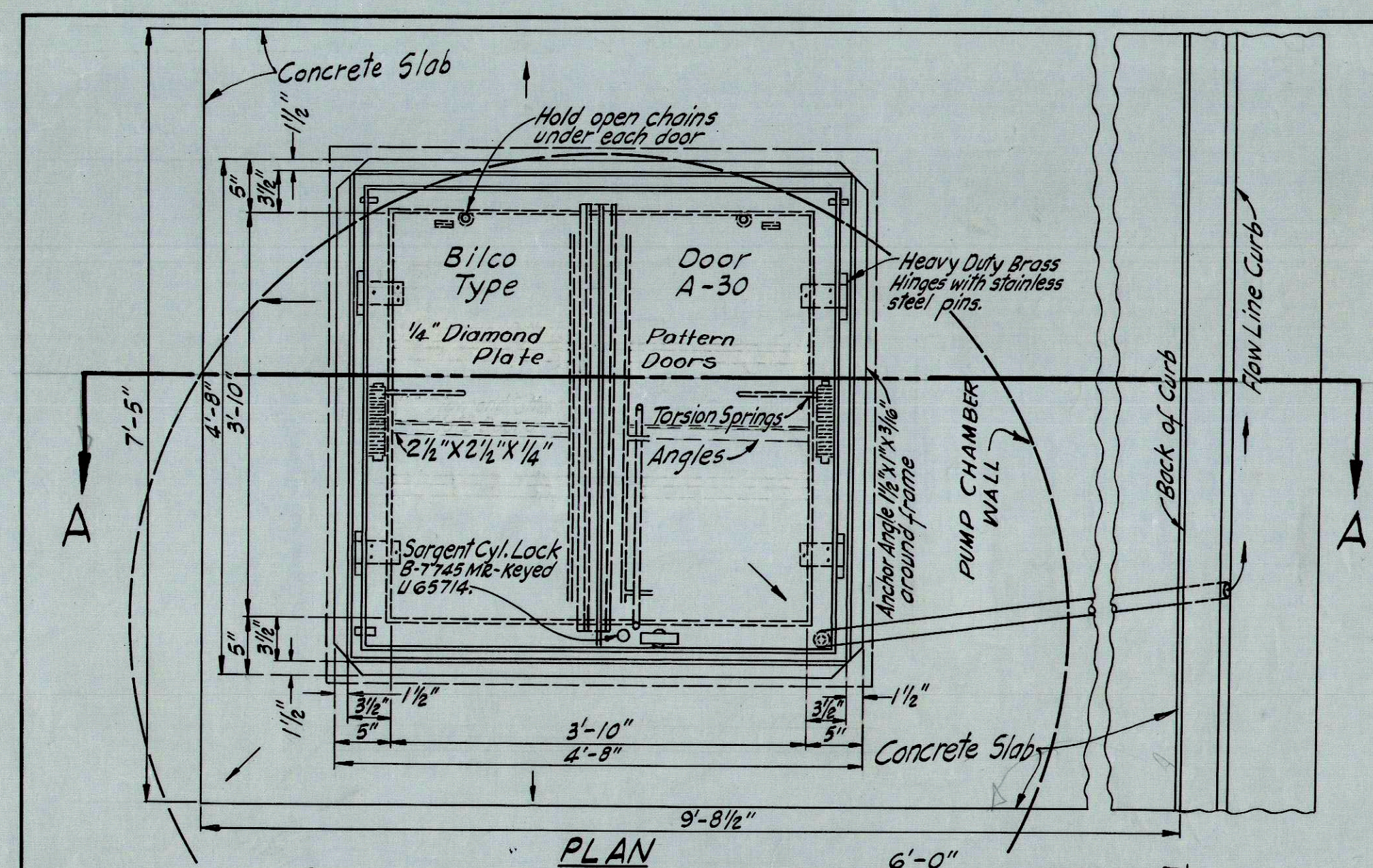
PRIVATE CONTRACT #6221

CONSTRUCTION PLAN FOR
SEWAGE PUMP STATION
TO SERVE
TRACT #27137

PAGE 11 OF 12 PAGES
SCALE: AS NOTED DATE: JULY 1962
CITY OF WALNUT

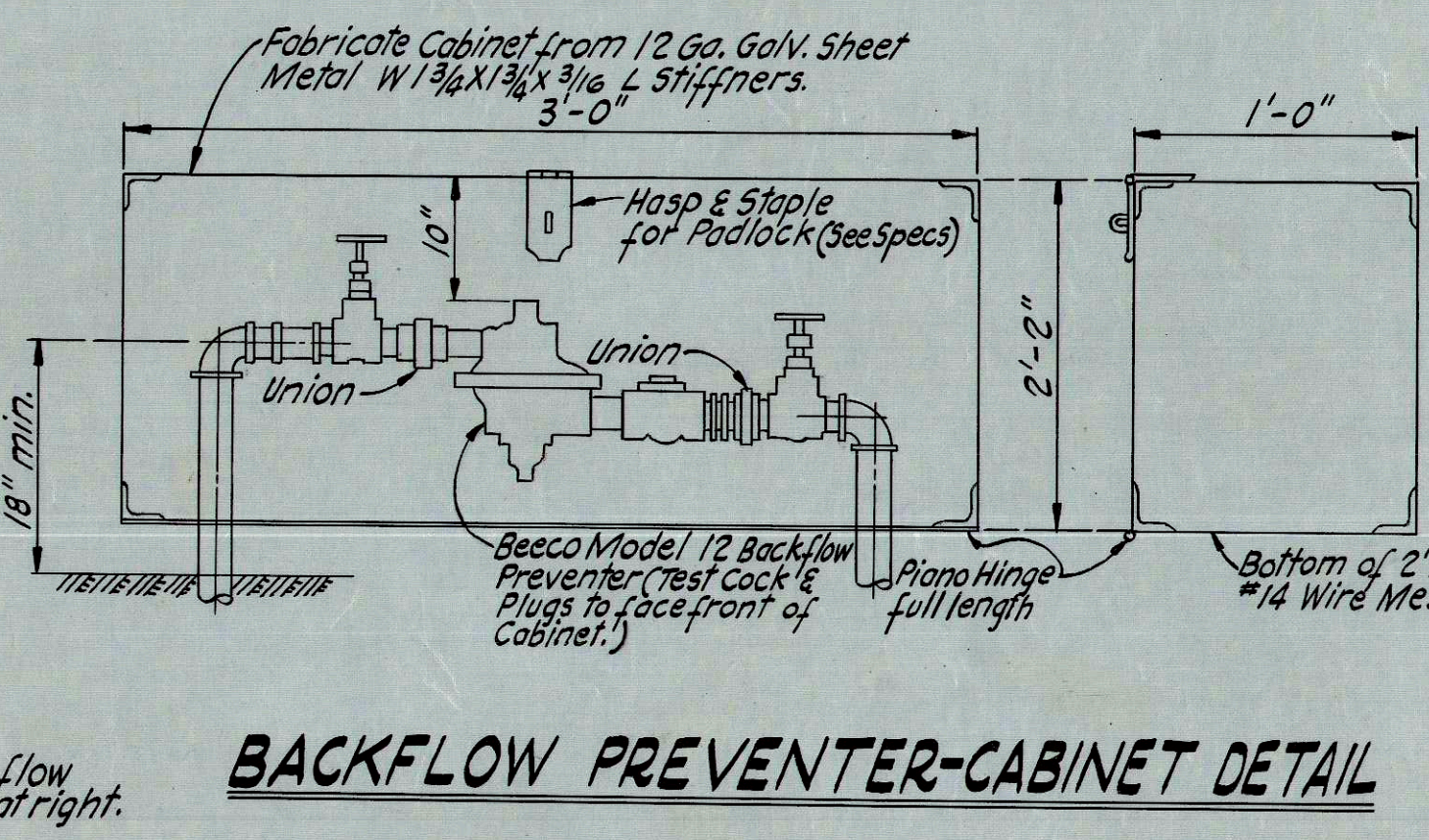
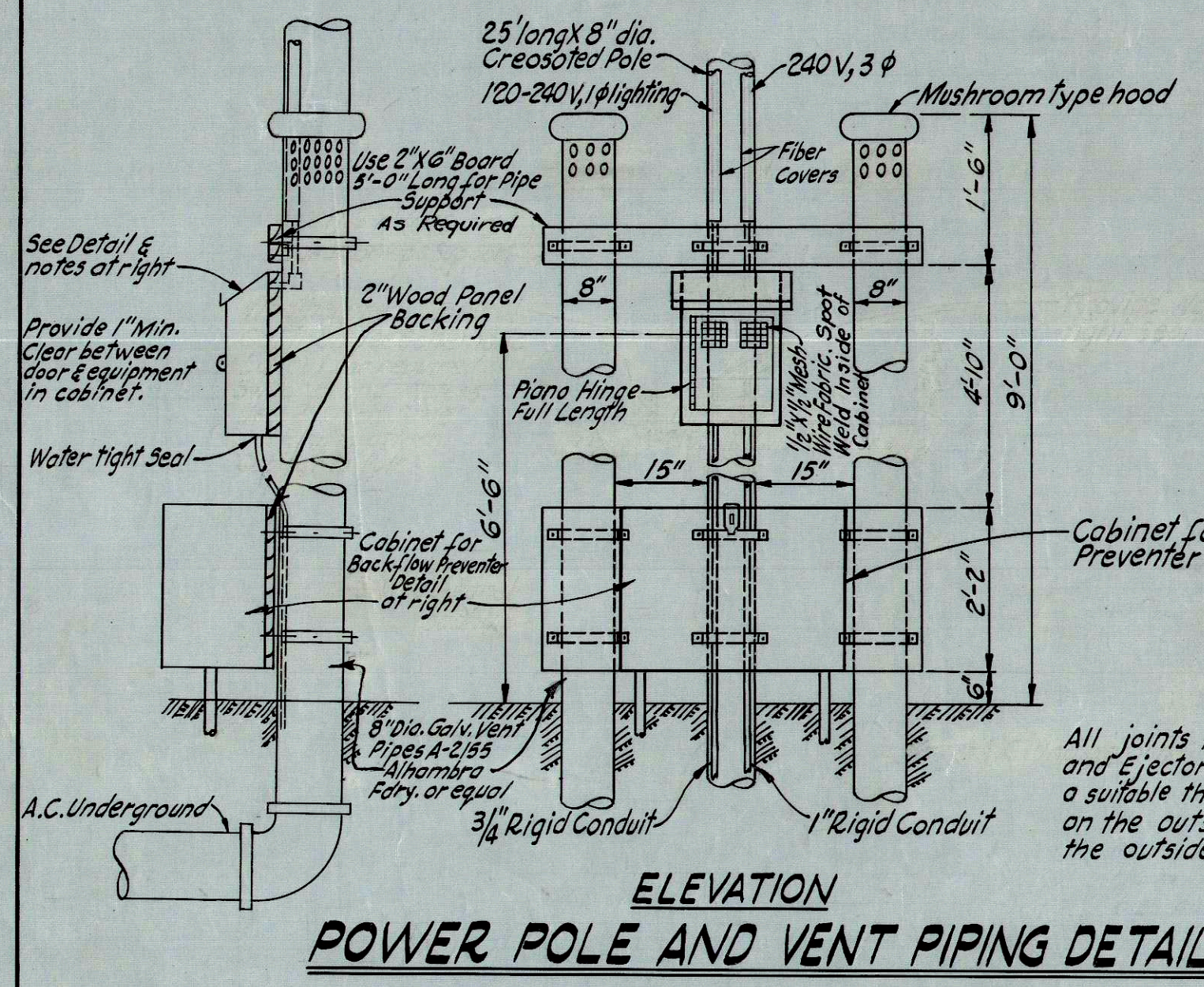
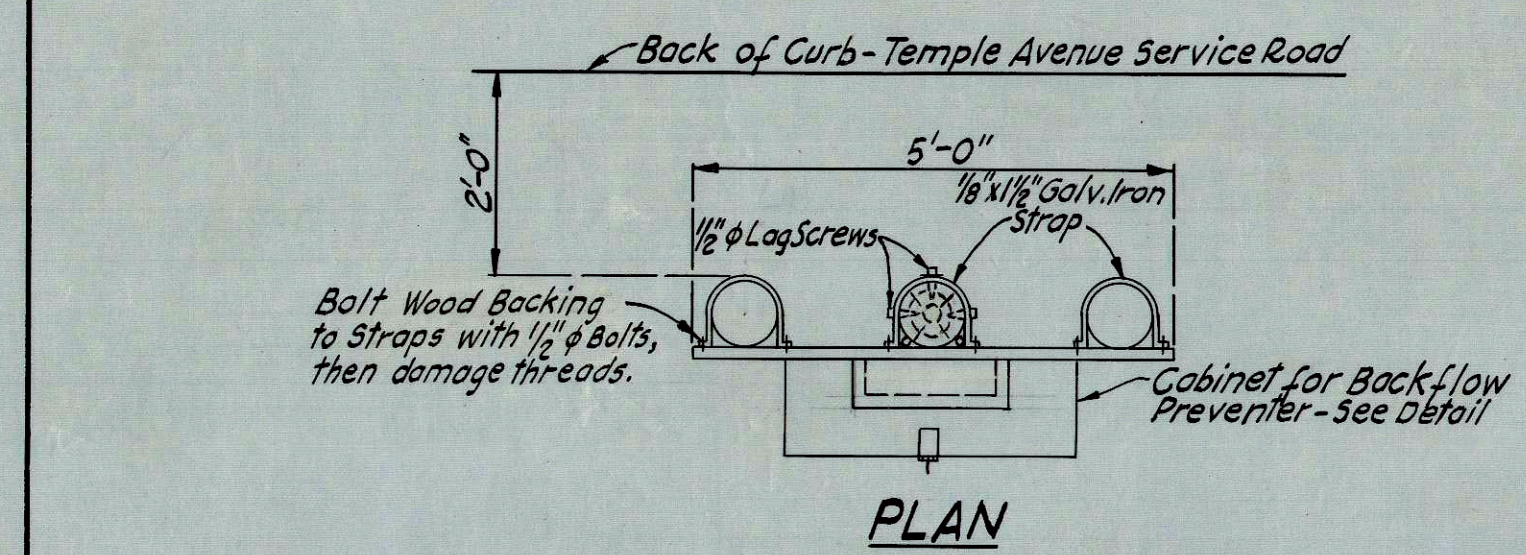
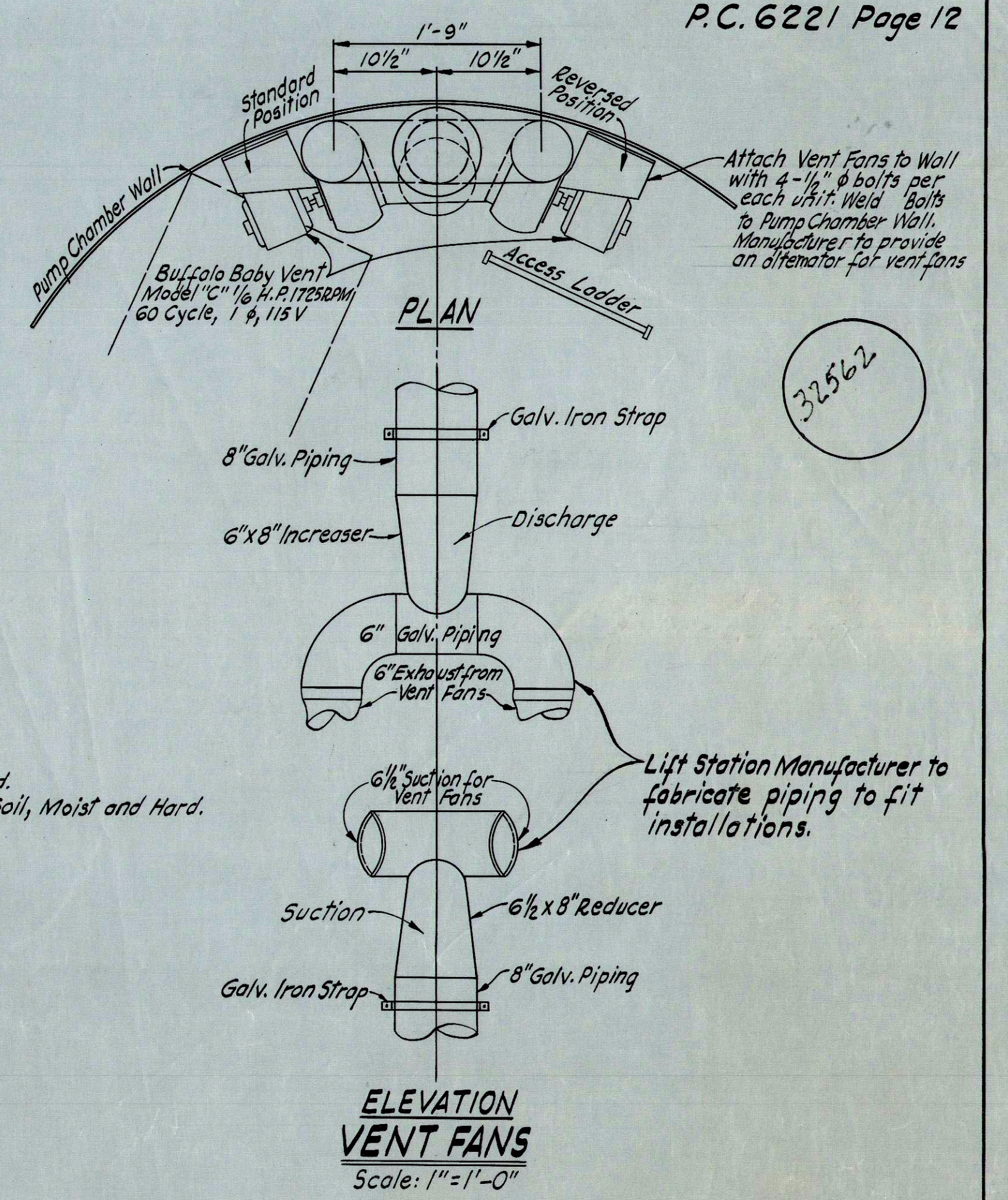
JOHN A. LAMBIE CITY ENGINEER
PREPARED IN THE OFFICES
OF
ENGINEERING SERVICE CORPORATION
1127 W. WASHINGTON BOULEVARD L.A.

REGISTERED CIVIL ENGINEER N#3692

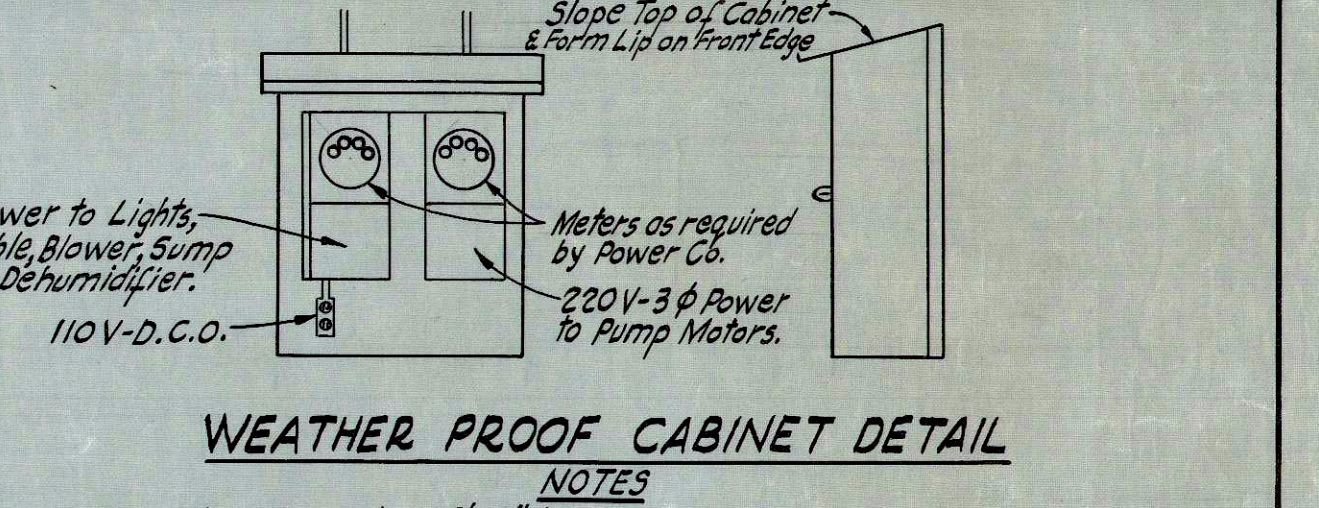
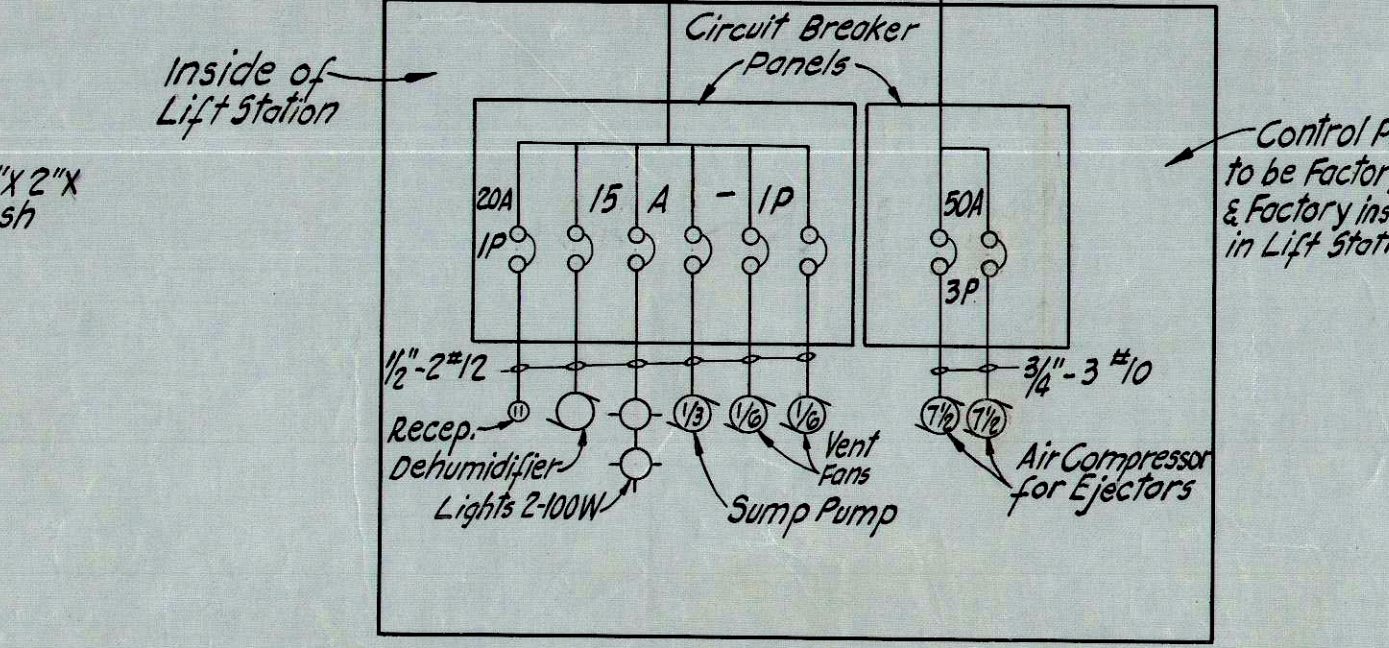
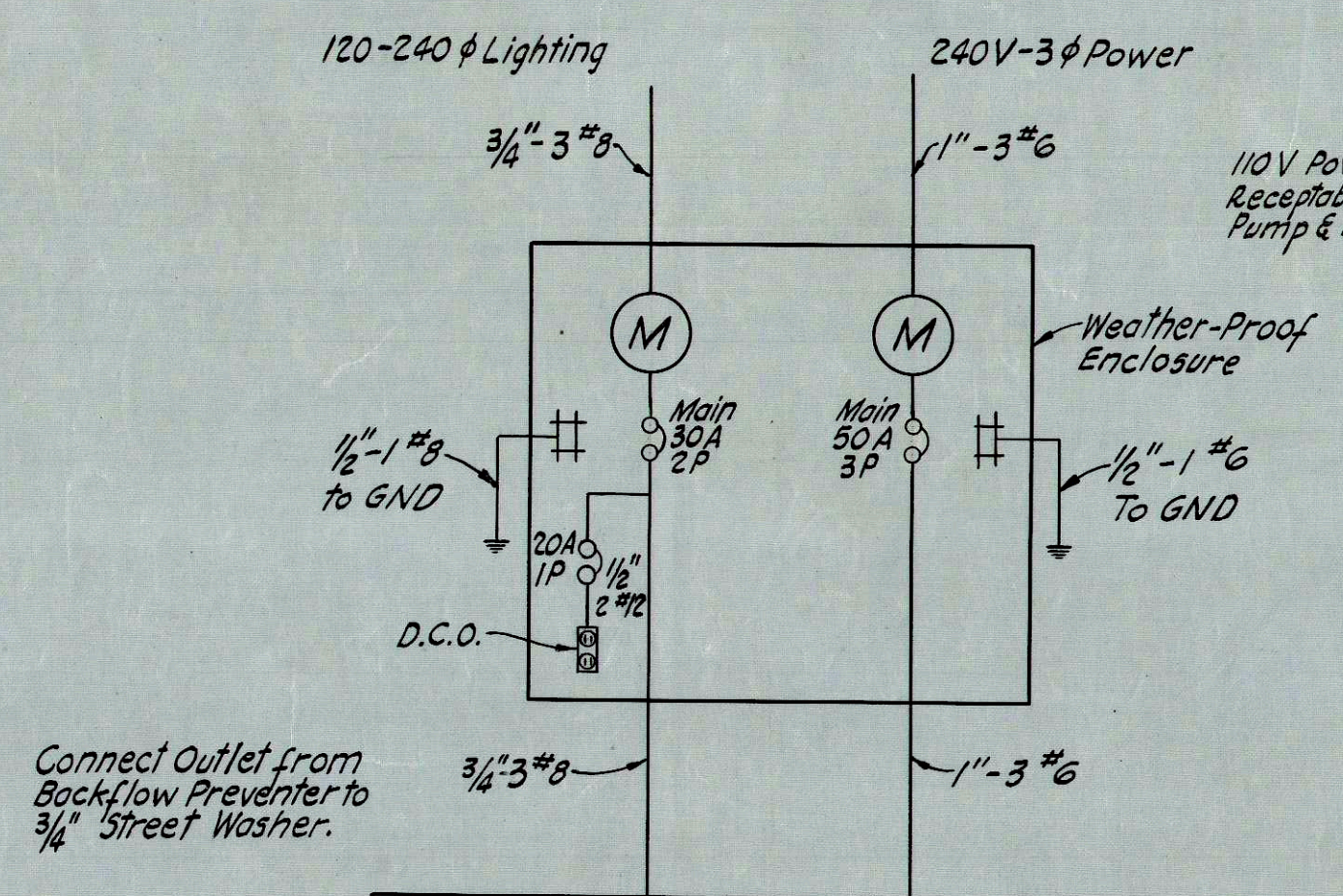


TEST BORING

0	Medium to Fat Clay, Dry and Hard.
1 1/2	Medium to Fat Clay, Moist and Stiff.
4	Medium to Fat Clay, very Stiff.
7	Shale Fragments in a Matrix of Lean Clay, Moist and Very Stiff.
12	Medium to Fat Clay with scattered Shale Fragments, Moist and Hard.
16	Slightly Sandy-Lean Clay, Moist and Hard.
17 1/2	Medium Clay containing some Diatomaceous Soil, Moist and Hard.
18 1/2	Medium Clay, with scattered Shale Fragments, Moist and Hard.
25	



NOTE
All joints in electrical conduit between Power Pole and Ejector Station are to be made water tight using a suitable thread compound. Conduit is to be painted on the outside with the same epoxy resin as on the outside of pump chamber.



- NOTES**
- Power Pole shall be 25'-0" long.
 - Embed 5'-0" in Concrete Below Curb Elevation.
 - Install Service Heads & Conduit per Utility Company Requirements.
 - Cabinet to be Fabricated of 12 Ga. Galvanized Metal.
 - Dimensions of Metal Cabinet to be determined in field.
 - Metal Cabinets & Wood Backing to receive 2 exterior coats oil base gray paint.
 - Fasten Cabinet to Wood Backing w/ Galv. Screws.
 - Bolt Wood Panel to Galvanized Iron Straps w/ 1/2" x 3" Galvanized Bolts.
 - Face of Door to be Flush. Provide Stops Inside.
 - Panel to Face South.
 - Provide Double Hasp for 2 Locks so as to enable Power Co. & County Engr. to unlock Cabinet.
 - Use Piano Hinge Full Length of Cabinet Door.
 - Place 1/2" x 1/2" Mesh Wire Fabric in Cabinet door in Front of Meters so Meters may be read from outside of Cabinet without unlocking Door.

PRIVATE CONTRACT NO 6221
CONSTRUCTION PLAN FOR
SEWAGE PUMP STATION
TO SERVE
TRACT NO 27137
PAGE 11 OF 12 PAGES
SCALE: AS NOTED DATE: JULY 1962
CITY OF WALNUT
JOHN A. LAMBIE CITY ENGINEER
PREPARED IN THE OFFICES
OF
ENGINEERING SERVICE CORPORATION
1127 W. WASHINGTON BOULEVARD L.A.
REGISTERED CIVIL ENGINEER NO 3692