

**DOUBLE SCALE
LOMITA BLDG. DIST. NO. 12**

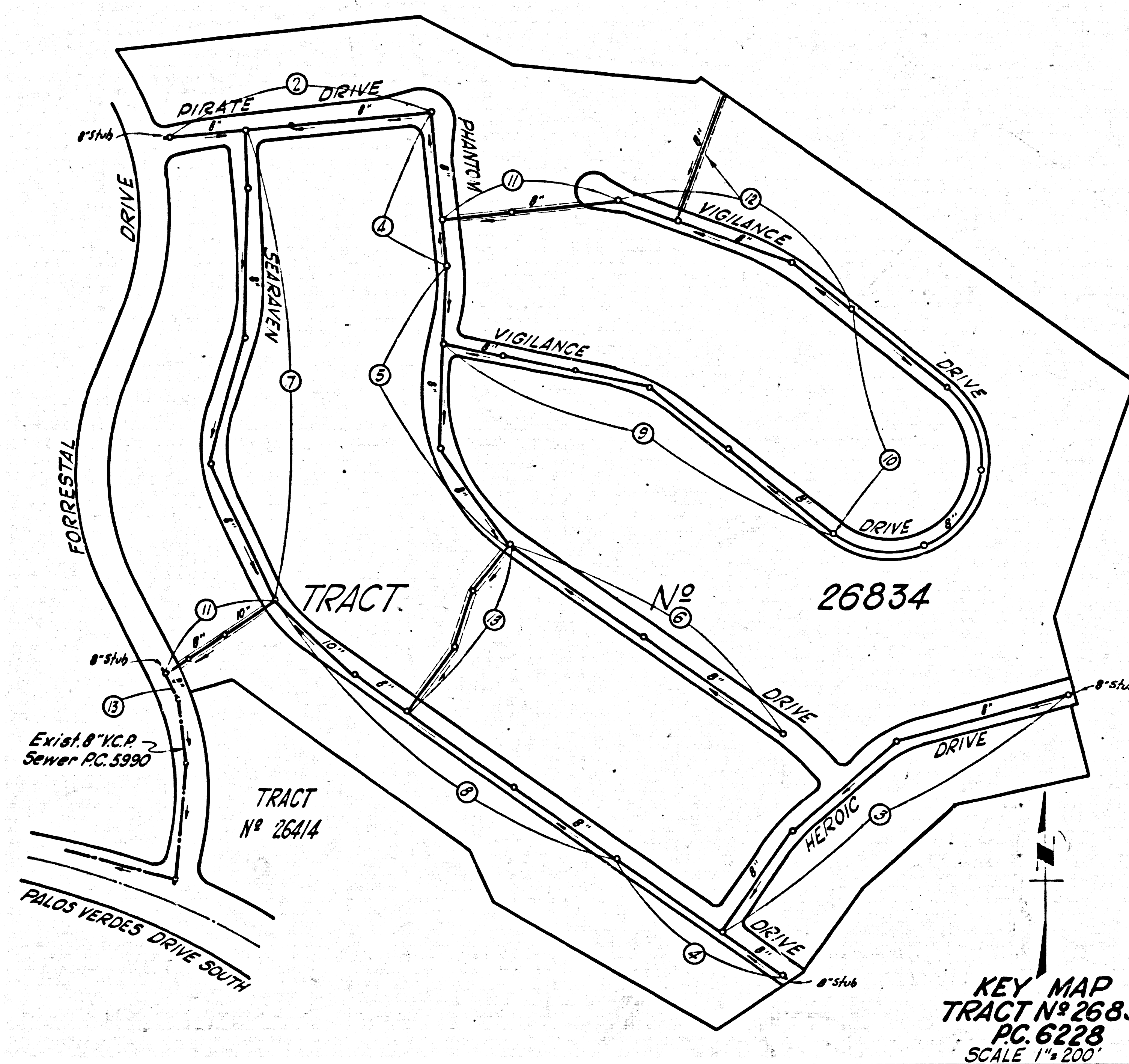
PROFILE ALIGNMENT AND GRADE OF
SANITARY SEWERS P.C. 6228
PAGE 1
TO BE CONSTRUCTED IN J.N. 0358.24

TRACT N° 26834
PRIVATE CONTRACT NO. 6228

W.S. 27
7 SHEETS; 13 PAGES
SCALE: HORIZ. 1" = 40'
VERT. 1" = 4'
JUNE, 1962
PREPARED IN THE OFFICES OF

33214

By *Jack C. Lansing*
REG. C. E. NO. 11351
FOR LEGEND SEE PLAN NO. S-A-64



REVISIONS

Raise sewer grades from Sta. 0+00 to Sta. 1+44 and add one M.H. on Sheet 11. of Easement NE of Forestal Dr.
Approved: *J.C. Lansing* 9-28-62 Date

Raise sewer grades from Sta. 1+52 to Sta. 2+072 on Sta. 135 at Easement NE of Scaryven Dr.
Approved: *J.C. Lansing* 10-21-62 by J.S.C. Date

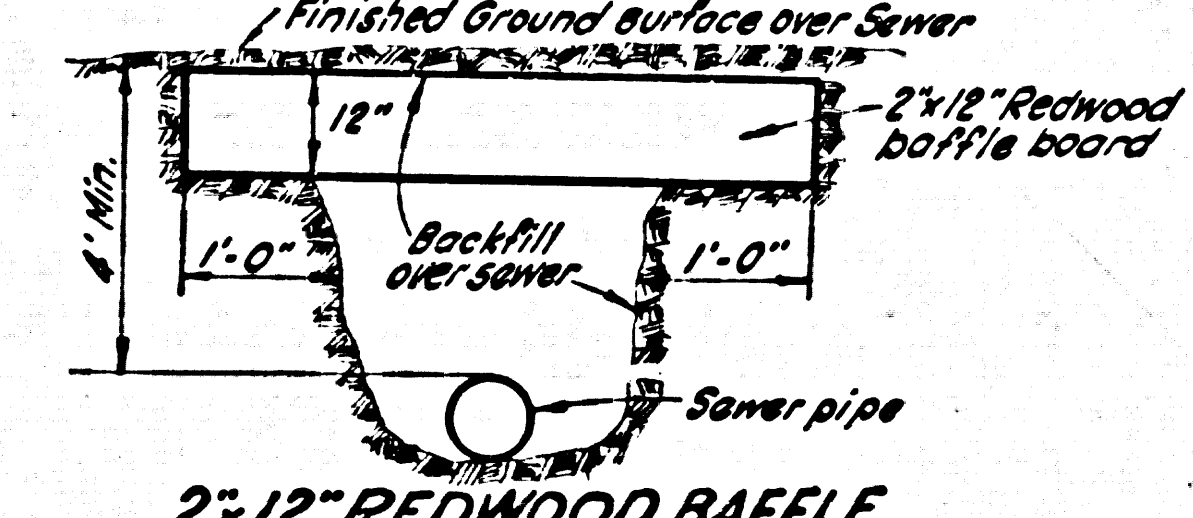
**No CHARGE
FOR CONNECTIONS**
L. Curtis 8-7-62

CONNECTIONS FOR THE DISPOSAL OF INDUSTRIAL WASTES SHALL BE MADE TO SEWERS SHOWN ON THESE DRAWINGS WITHOUT WRITTEN PERMISSION FROM THE CHIEF ENGINEER AND GENERAL MANAGER OF THE COUNTY SANITATION DISTRICTS.

BENCH MARK:
B.M. 34-13 U.S.C. & G.S. B.M. V-787 (U.S. 4131)
Palos Verdes Dr. S. 0.5 miles from junction, Palos Verdes Dr. S. and Palos Verdes Drive E. 276' E. of a stone box culvert, 26.2' N.E. of centerline, 2' E. of a white witness post. A Std. disk stamped "V-787-1948" set in top of conc. post flush with surface. F.B. 1855-18 1953 Adj. Elev. 332.211.

**KEY MAP
TRACT N° 26834
PC. 6228
SCALE 1" = 200'**

- NOTES:**
- PROVIDE STAKES ON THE PROPERTY LINE OR PROPERTY LINES PRODUCED AT RIGHT ANGLES TO THE SEWER LINE AT THE CENTER LINE OF EACH MANHOLE.
 - NO REPRESENTATIVE OF THE COUNTY ENGINEER WILL SURVEY OR LAY OUT ANY PORTION OF THE WORK.
 - THE OWNER OR HIS AUTHORIZED REPRESENTATIVE SHALL FURNISH THE COUNTY ENGINEER WITH GRADE SHEETS AND STATIONING FOR ALL HOUSE LATERALS AND Y BRANCHES AND SHALL PROVIDE STAKES FOR THEM AT THEIR PROPER LOCATIONS WITH STATIONING PLAINLY MARKED. ANY CHANGE IN LOCATION SHALL BE REQUESTED IN WRITING BY THE OWNER OR HIS REPRESENTATIVE.
 - THE PRIVATE ENGINEER SHALL FURNISH THE HOUSE LATERAL DEPTH AT THE PROPERTY LINE BELOW THE TOP OF CURB ELEVATION FOR EACH HOUSE LATERAL ON THE GRADE SHEET.
 - NO REVISIONS SHALL BE MADE IN THESE PLANS WITHOUT THE APPROVAL OF THE COUNTY ENGINEER.
 - USE STANDARD MANHOLE FRAMES AND COVERS, S-117.
 - USE EXTRA STRENGTH PIPE. ALL PIPE IS STANDARD DEPTH, EXCEPT AS NOTED.
 - USE MECHANICAL COMPRESSION JOINTS FOR ALL V.C.P. PER SPECS. SECS. 34 & 44.
 - RESURFACE ALL TRENCH WITHIN PAVED AREA TO MEET L.A. COUNTY ROAD DEPT. OR CALIF. STATE HIGHWAY REQUIREMENTS IN ACCORDANCE WITH PERMITS.
 - ENCASE FOUR FEET OF SEWER AT POINTS OF INTERFERENCE WITH POLES, CASE III, S-172.
 - HOUSE LATERALS TO BE CONSTRUCTED WITH INVERTS AT PROPERTY LINE 6 FEET BELOW CURB GRADE EXCEPT AS NOTED.
 - ALL STRUCTURES SHALL BE BRICK SEWER STRUCTURES, S-104, EXCEPT AS NOTED.
 - FOR ALLOWABLE LEAKAGE TEST USE FORMULA NO. 1, SPECS., SEC. 54.
 - MANHOLE TOPS IN UNIMPROVED RIGHTS-OF-WAY TO BE SIX INCHES ABOVE FINISHED GRADE.
 - THE CONTRACTOR SHALL NOTIFY THE CONSTRUCTION DIVISION BY TELEPHONE, MADISON 9-4747, EXTENSION AT LEAST TWENTY-FOUR HOURS BEFORE STARTING ANY WORK UNDER THIS CONTRACT.
 - (a) NO CONSTRUCTION WILL BE PERMITTED IN FILLED AREAS UNLESS ACCEPTABLE CERTIFICATION IS SUBMITTED TO THE CONSTRUCTION DIVISION OF THE COUNTY ENGINEER'S DEPARTMENT THAT RELATIVE COMPACTION IS GREATER THAN 90%.
 - (b) IF COMPACTION IS LESS THAN 90%, THE SEWER MUST BE GRADED PER S-A-168.
 - (c) SPECIAL MANHOLE BASES MUST BE INSTALLED PER S-A-123 AS INDICATED ON THESE PLANS.
 - (d) IF COMPACTION IS GREATER THAN 90%, GRADING AND SPECIAL MANHOLE BASES ARE NOT REQUIRED.
 - SPECIFICATIONS DATED MAY 25, 1962 APPLY IN THE CONSTRUCTION OF THIS PROJECT.

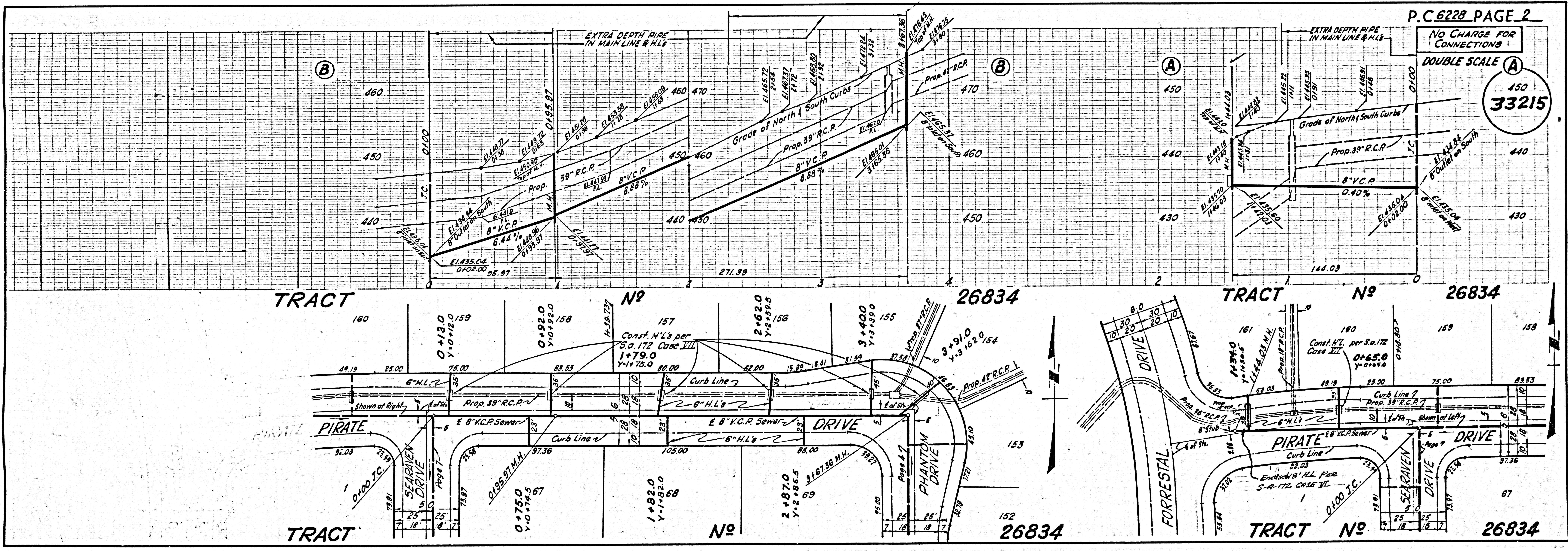


- 2x12 REDWOOD BAFFLE BOARD OVER**
- Each end of baffle board will extend one foot into undisturbed ground.
 - Baffles will be so spaced that the top of the lower baffle shall be level with the bottom of the upper baffle board.
 - The upper layer of backfill to be 1 foot min. of top of soil. Top soil shall be tamped in place and planted with mustard weed seed and adequately watered until growth restored.

NOTE:
GRADES TO WHICH THIS IMPROVEMENT IS TO BE CONSTRUCTED ARE SHOWN ON PLANS AND PROFILES. GRADE POINTS FOR TOP OF CURB, CENTER LINE OF STREETS, OR CENTER LINE OF ALLEYS ARE SHOWN BY CIRCLES ON PROFILES. AT ALL POINTS BETWEEN DESIGNATED POINTS THE GRADE SHALL BE ESTABLISHED SO AS TO CONFORM TO A STRAIGHT LINE DRAWN BETWEEN SAID DESIGNATED POINTS.
ELEVATIONS ARE IN FEET ABOVE U.S.C. & G.S. SEA LEVEL DATUM OF 1929.
THIS DRAWING AND THE DATA HEREON ARE HEREBY MADE A PART OF THE SPECIFICATIONS.
WORK SHALL BE CONSTRUCTED ACCORDING TO SPECIFICATIONS ON FILE IN THE OFFICE OF THE COUNTY ENGINEER AND SHALL BE PROSECUTED ONLY IN THE PRESENCE OF THE COUNTY ENGINEER.
BEFORE WORK CAN BE STARTED THE CONTRACTOR MUST OBTAIN A PERMIT TO EXCAVATE IN COUNTY STREETS FROM THE L.A. COUNTY ROAD DEPT., DISTRICT OFFICE NO. 3, AND PAY A FEE TO THE COUNTY ENGINEER ROOM 310 COUNTY ENGINEER'S BLDG., 108 N. 2ND STREET, SUFFICIENT TO COVER THE COST OF CONSTRUCTION INSPECTION AND RECORD PLANS.
APPROVAL OF THIS PLAN BY THE COUNTY OF LOS ANGELES DOES NOT CONSTITUTE A REPRESENTATION AS TO THE ACCURACY OF THE LOCATION OR THE EXISTENCE OR NON-EXISTENCE OF ANY UNDERGROUND UTILITY PIPE, OR STRUCTURE WITHIN THE LIMITS OF THIS PROJECT. THIS NOTE APPLIES TO ALL PAGES.
IF WORK IS TO BE DONE IN A STATE HIGHWAY, A PERMIT MUST BE OBTAINED FROM THE STATE OF CALIFORNIA, DIVISION OF HIGHWAYS, THE SOUTH SPRING STREET.

COUNTY OF LOS ANGELES, CALIFORNIA

APPROVED, JOHN A. LAMBIE, COUNTY ENGINEER APPROVED, J.D. PARKHURST, CHIEF ENGINEER
BY *Jack C. Lansing* ASST. SANITATION ENGINEER BY *J. D. Parkhurst* OFFICE ENGINEER
CHECKED BY *Harvey Lee* OFFICE OF COUNTY ENGINEER REG. C. E. NO. 10443
SUBMITTED: *Jack C. Lansing* PALOS VERDES-CENTINELA VALLEY REGIONAL ENGINEER

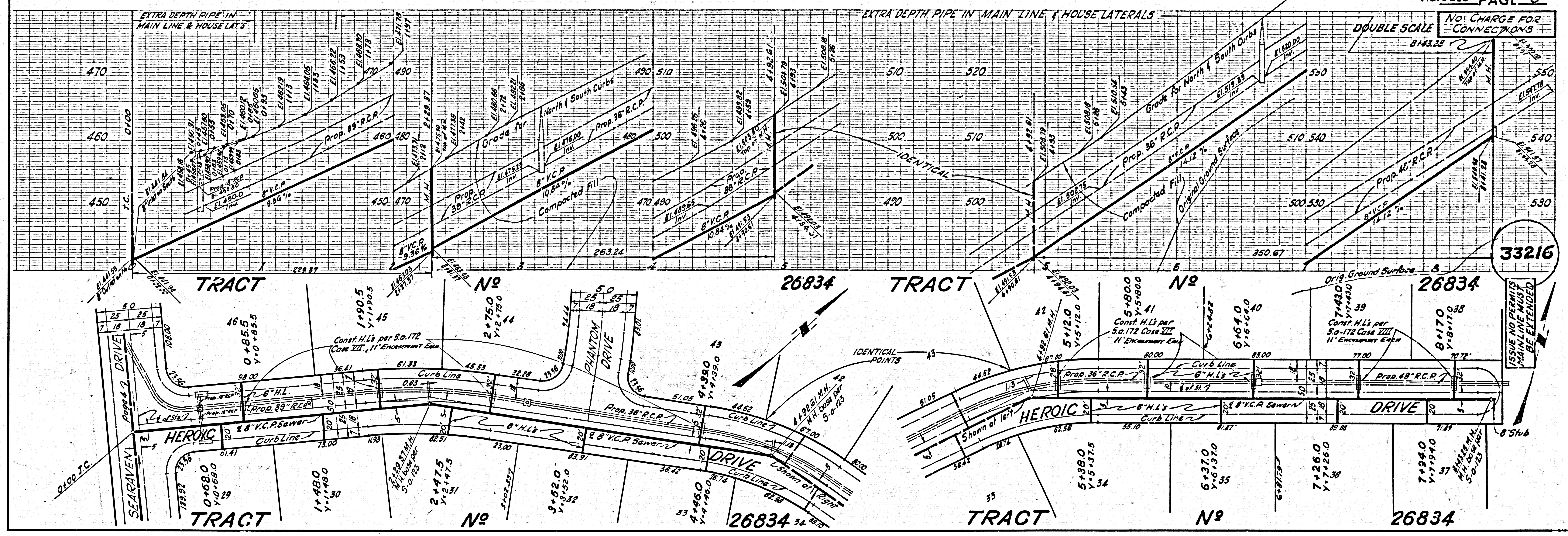


P.C. 6228 PAGE 2
DOUBLE SCALE (A)
150
33215

No CHARGE FOR CONNECTIONS

NO CHARGE FOR CONNECTIONS

DOUBLE SCALE

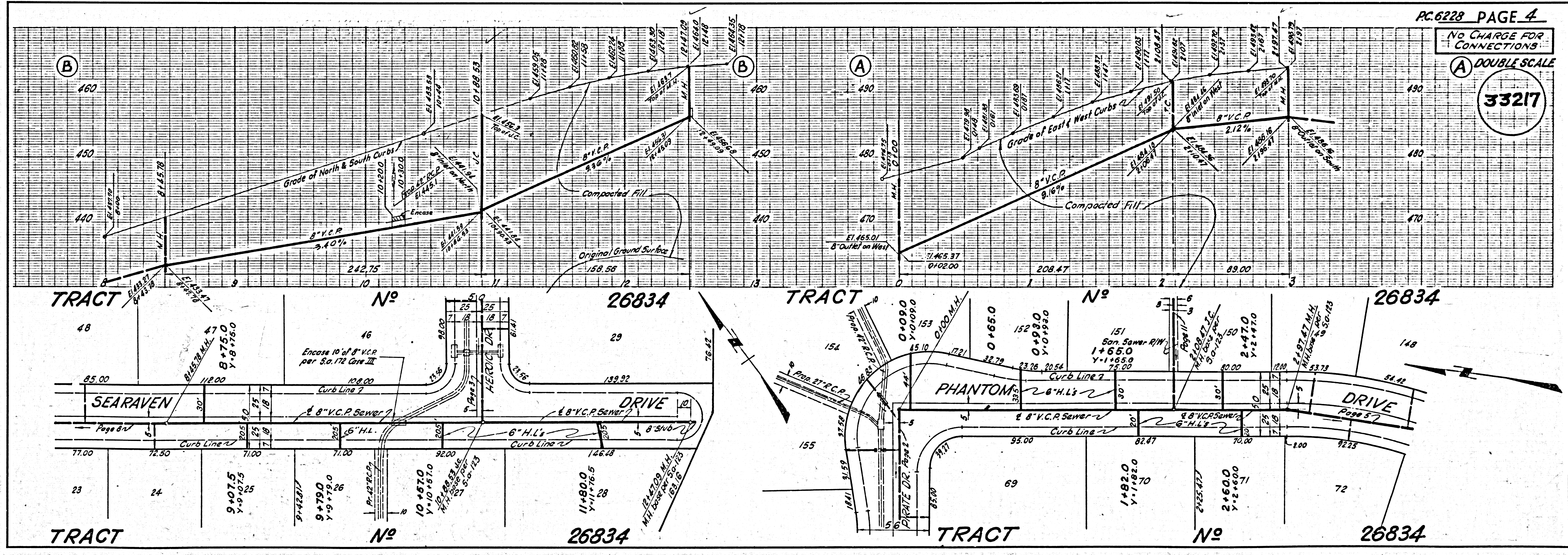


33216

ISSUE NO PERMITS MAIN LINE MUST BE EXTENDED

NO CHARGE FOR CONNECTIONS

DOUBLE SCALE

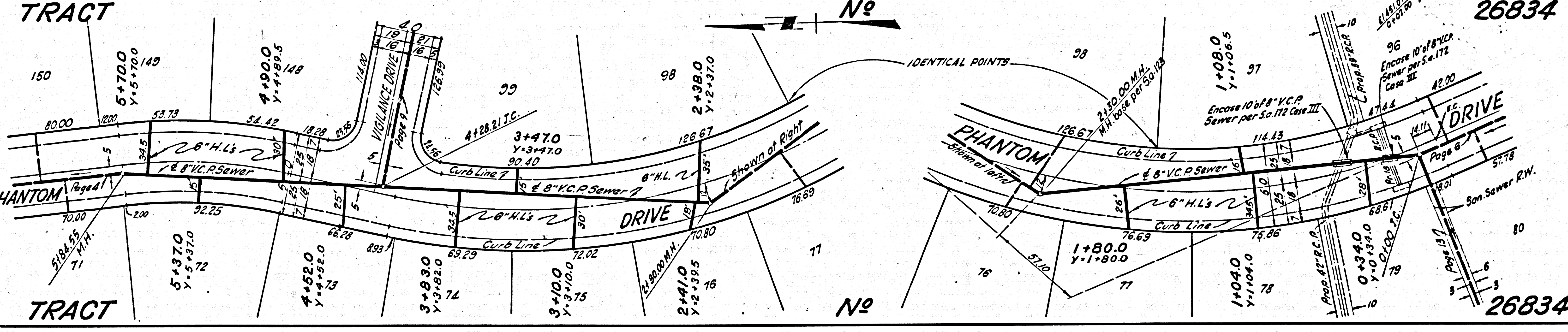
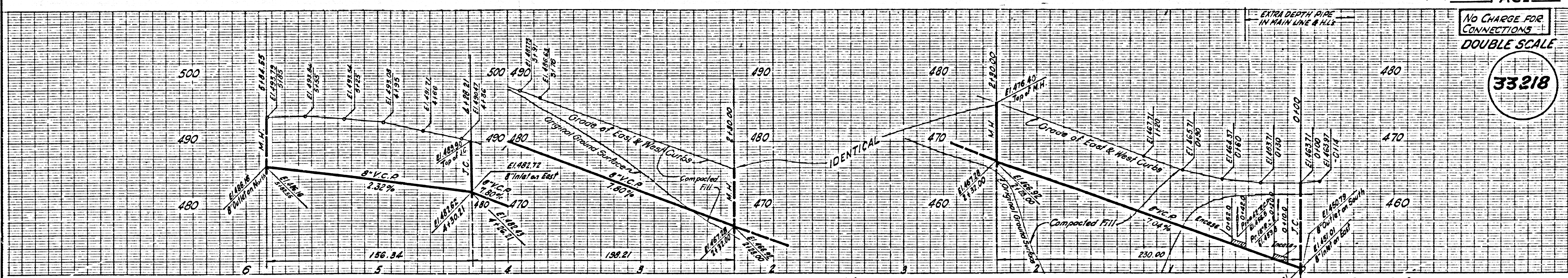


33217

13AC1 No 5834 BC 6558

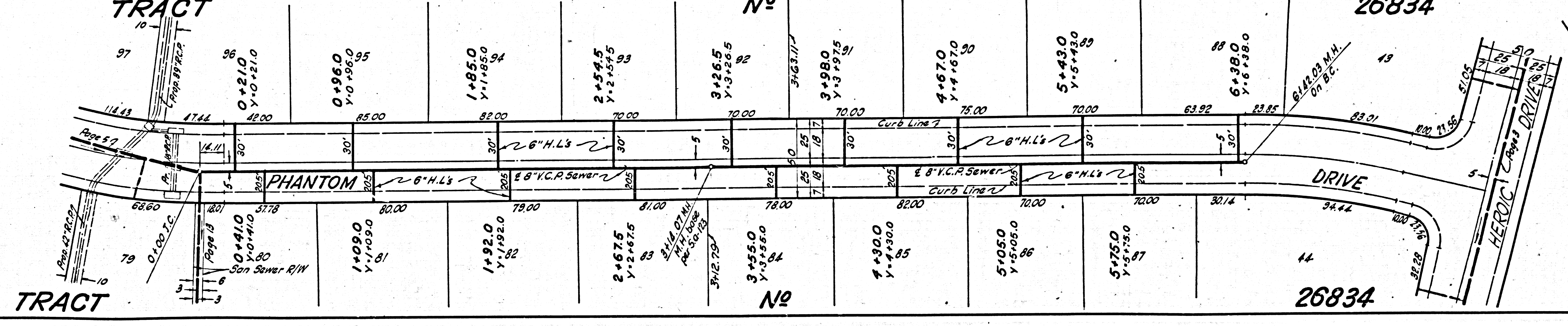
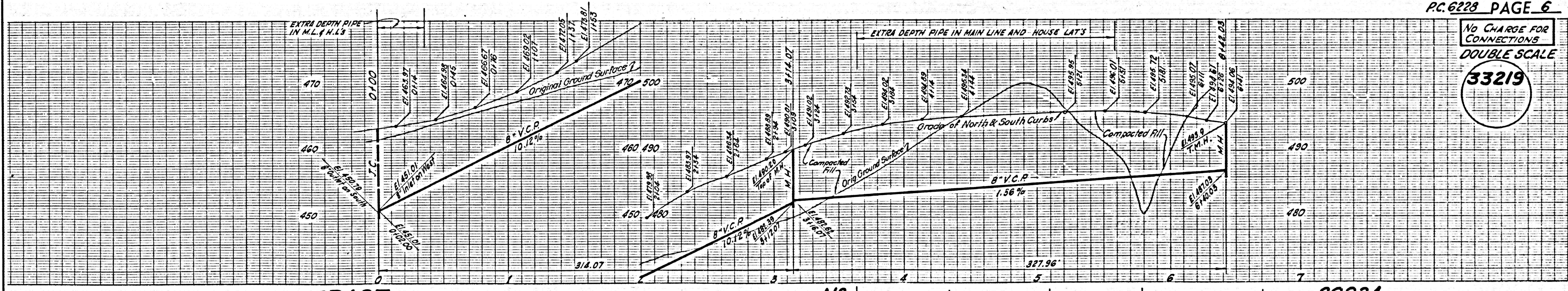
NO CHARGE FOR CONNECTIONS
DOUBLE SCALE

33218



NO CHARGE FOR CONNECTIONS
DOUBLE SCALE

33219

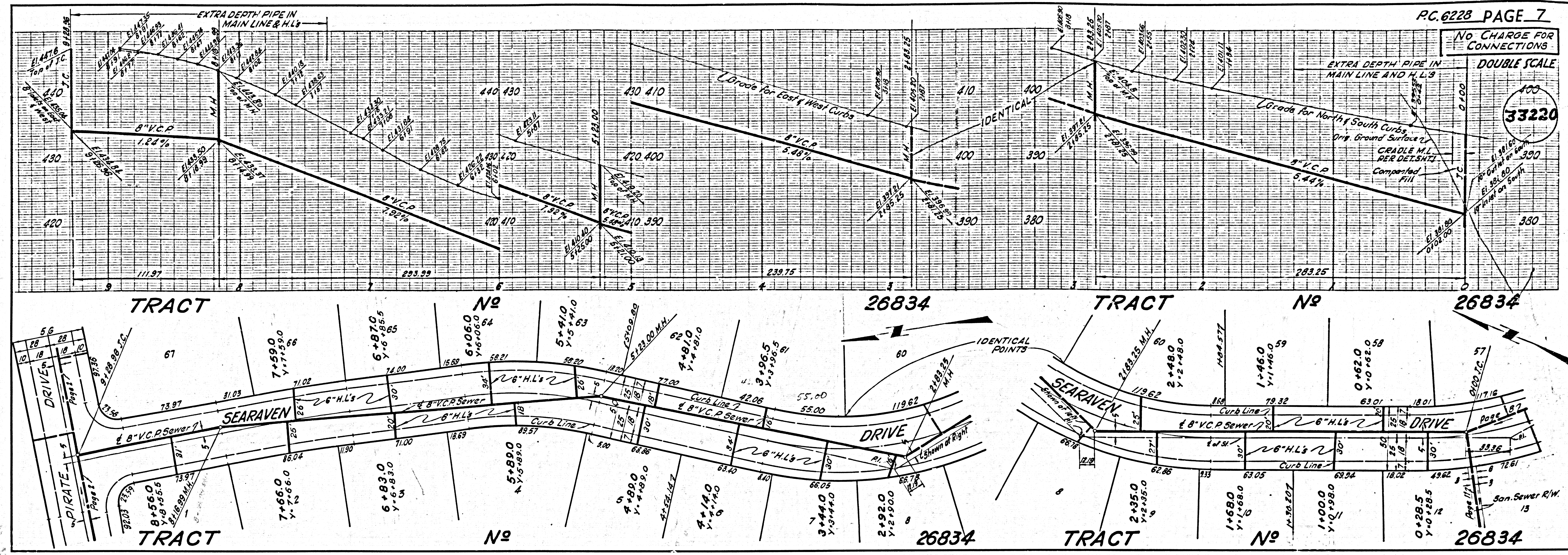


TRACT No 5834 PC. 6228

NO CHARGE FOR CONNECTIONS

DOUBLE SCALE

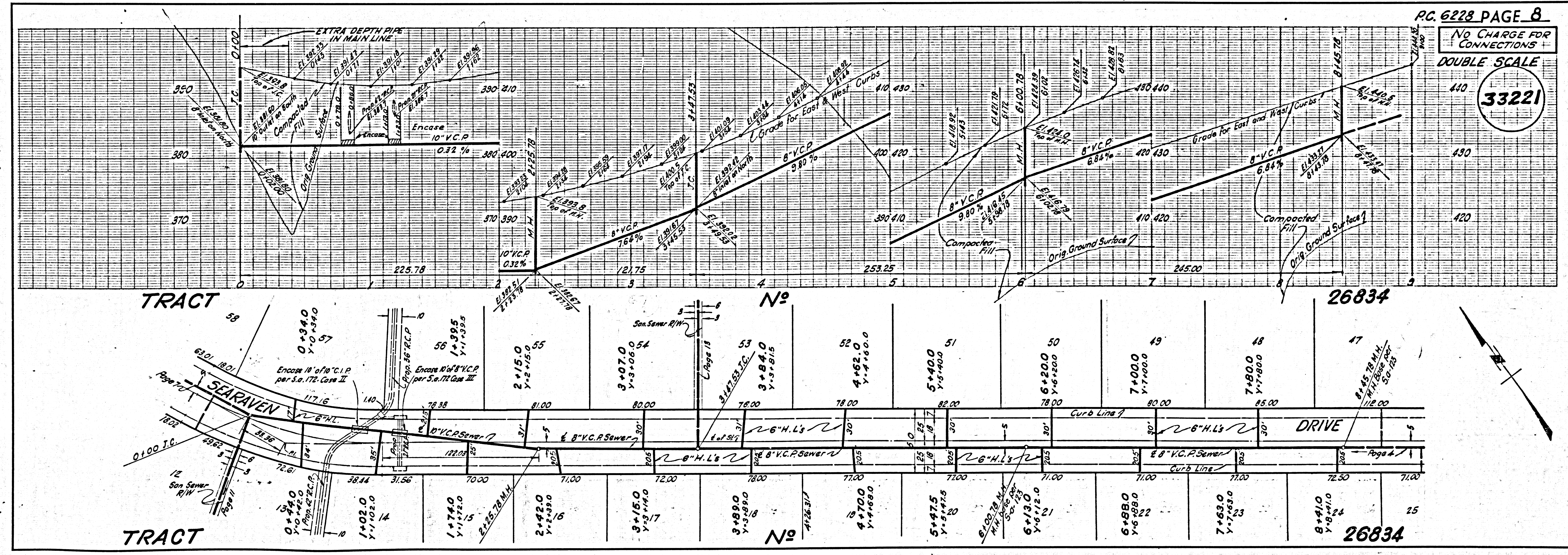
33220



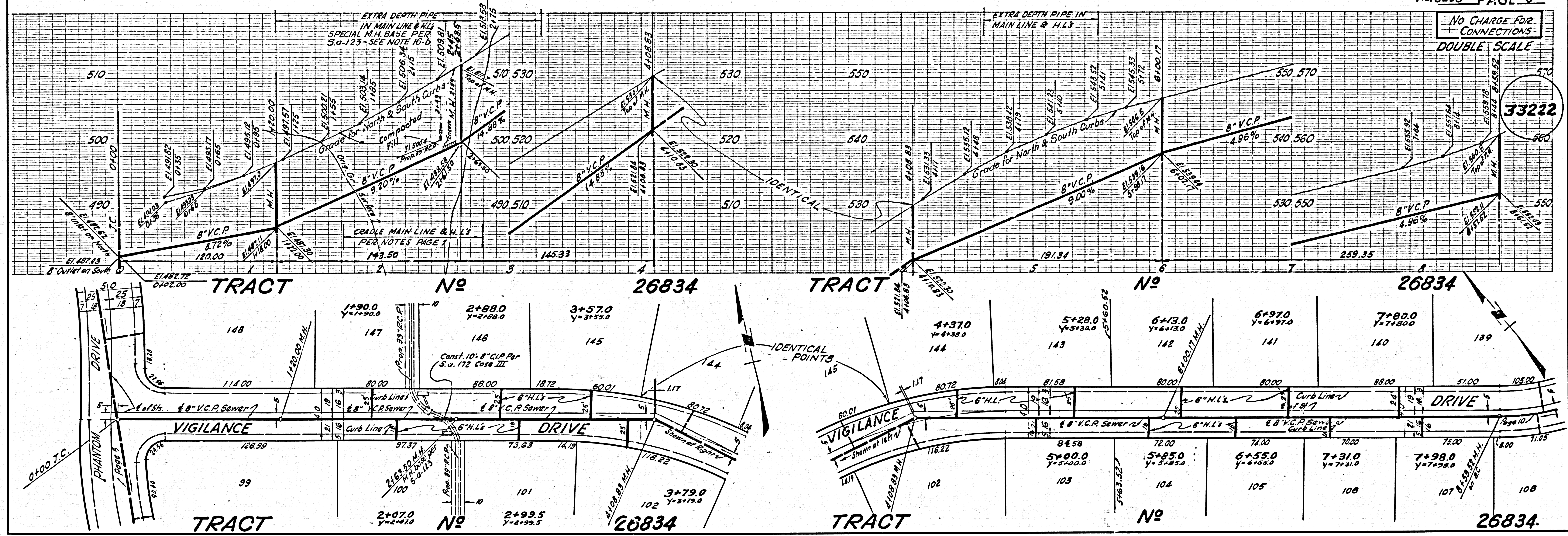
NO CHARGE FOR CONNECTIONS

DOUBLE SCALE

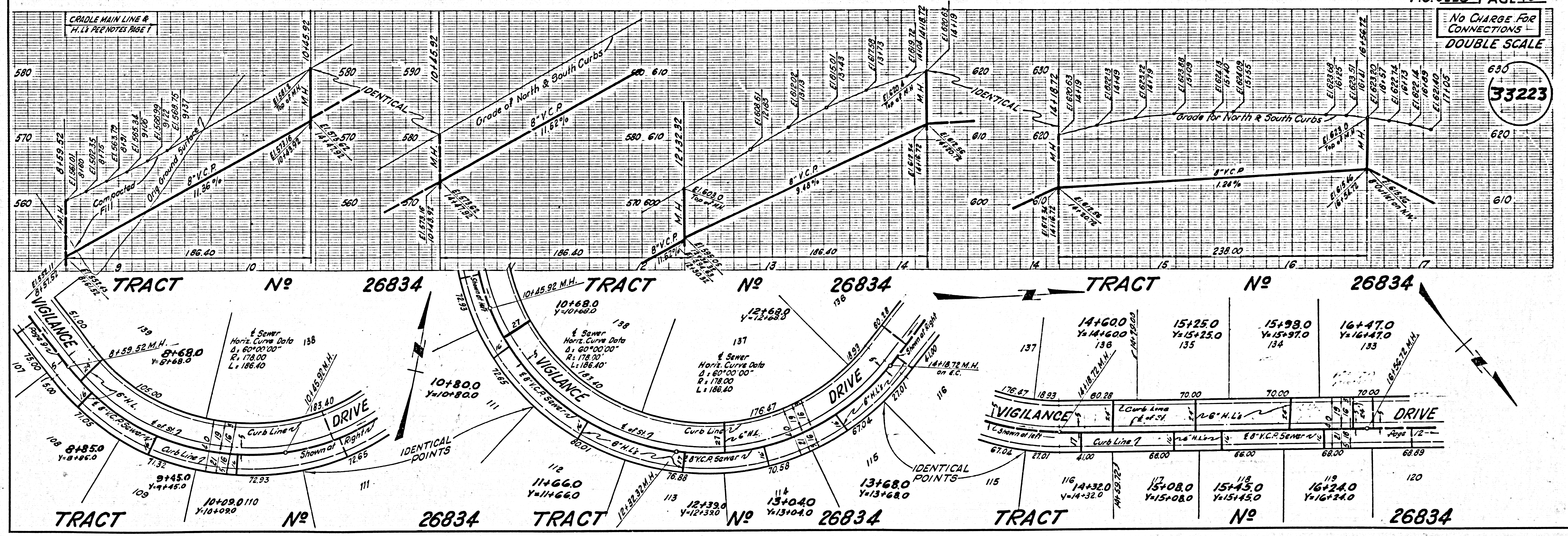
33221

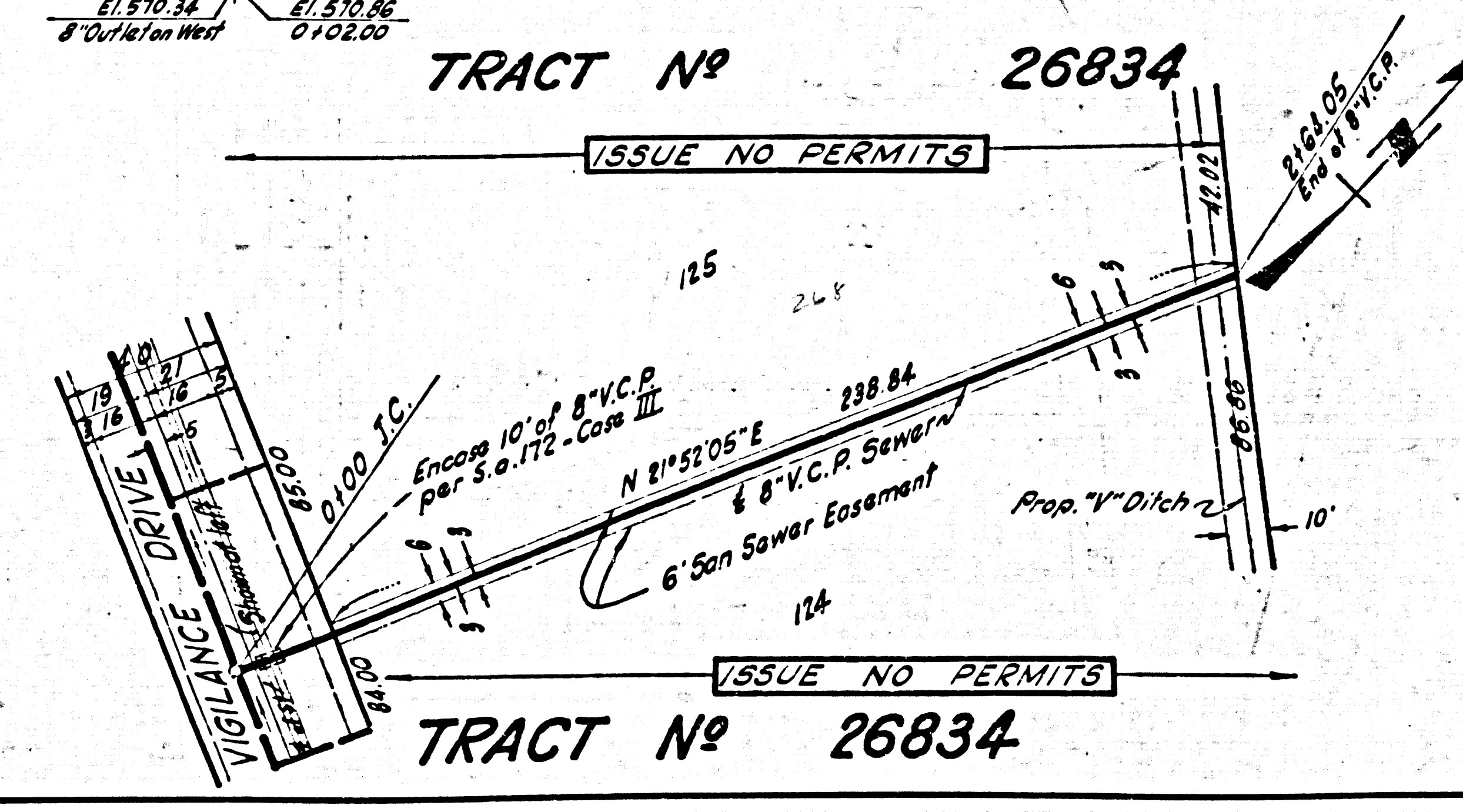
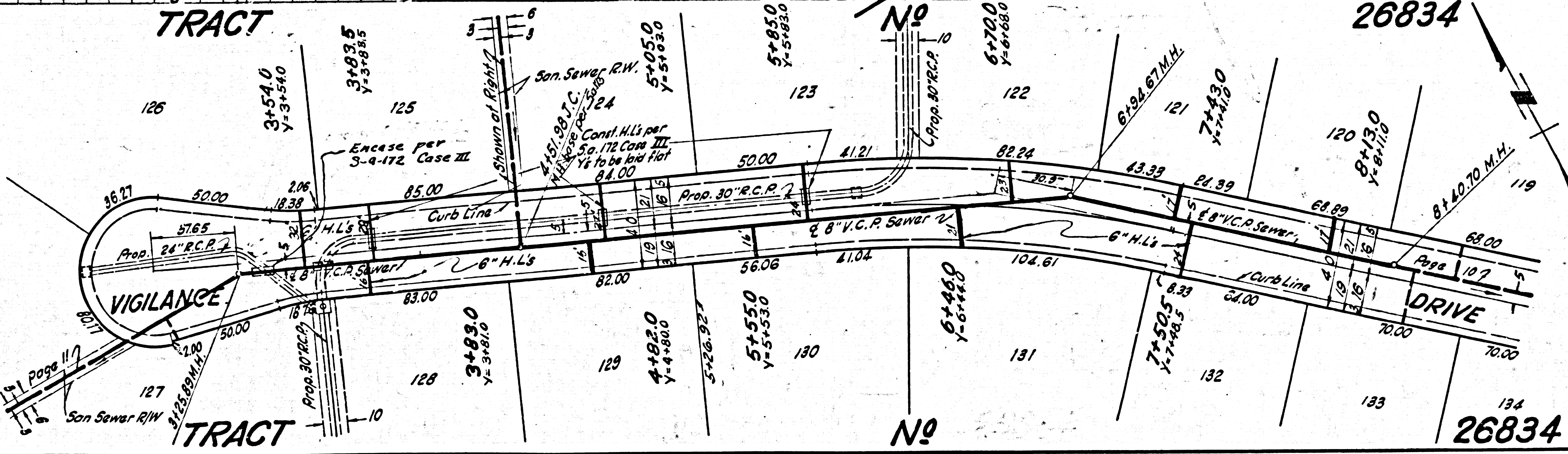
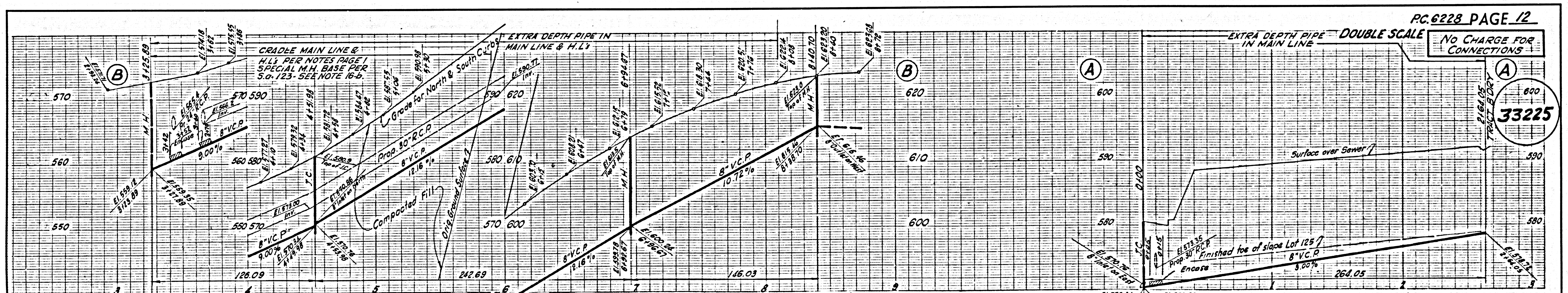
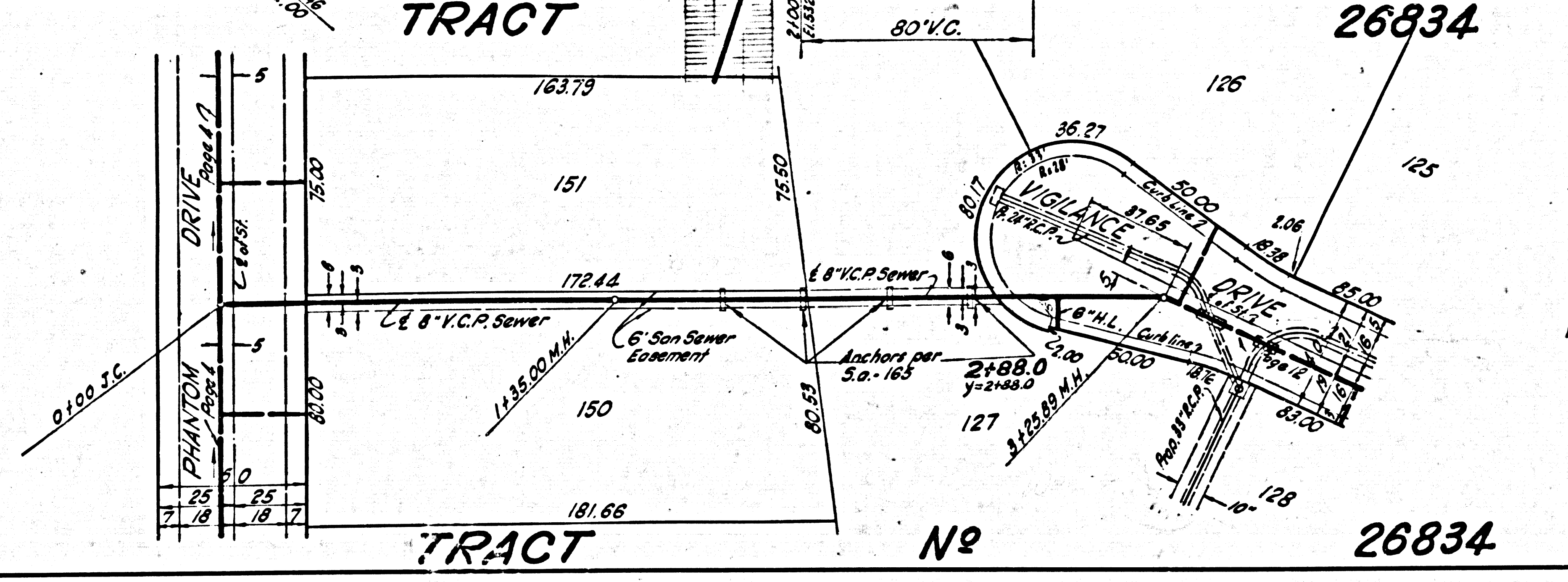
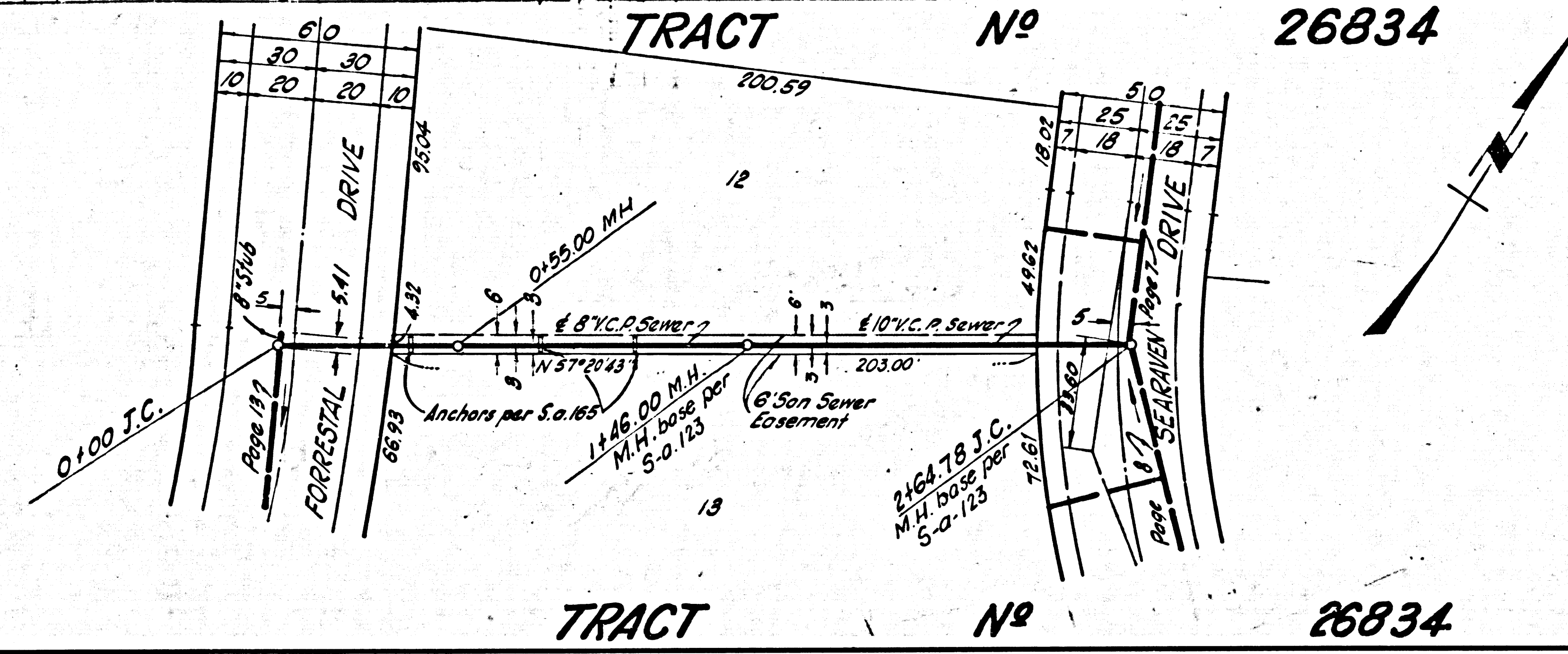
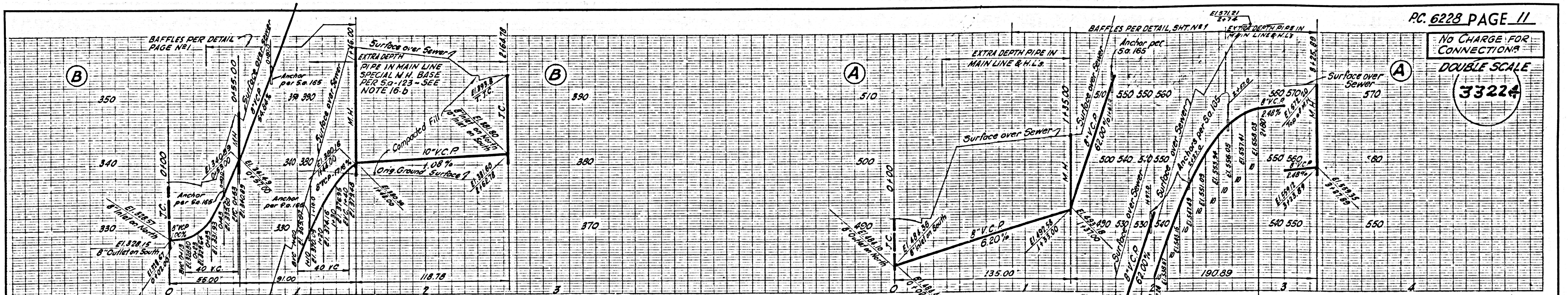


No CHARGE FOR CONNECTIONS - DOUBLE SCALE



No CHARGE FOR CONNECTIONS - DOUBLE SCALE





NO CHARGE FOR CONNECTIONS

DOUBLE SCALE

33226

