

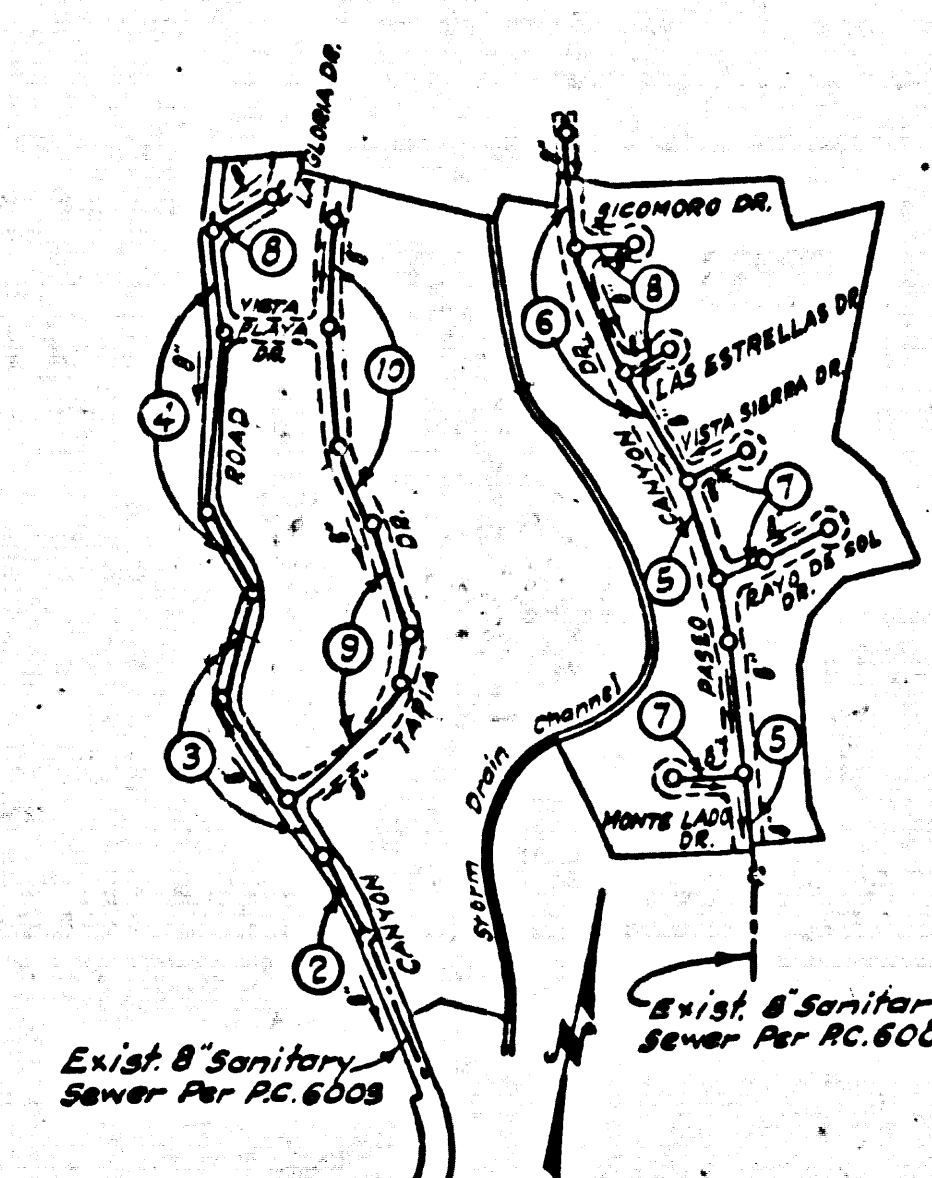
DOUBLE SCALE  
MALIBU BLDG. DIST. NO. 92

PROFILE ALIGNMENT AND GRADE OF P.C. 6229  
SANITARY SEWERS PAGE 1  
TO BE CONSTRUCTED IN I.M. 0358.26

TRACT N° 26956 34156  
PRIVATE CONTRACT NO. 6229

W.S. 95  
5 SHEETS; 10 PAGES  
SCALE: VERT. 1"=5' HORIZ. 1"=40'  
MARCH, 1962  
PREPARED IN THE OFFICES OF  
A.M.C.O. ENGINEERS  
8844 OLYMPIC BOULEVARD  
BEVERLY HILLS, CALIF.  
BY: J. May, Jr. REG. C. E. NO. 11467  
FOR LEGEND SEE PLAN NO. S-A-64

BENCH MARK -  
SY 5451 (CSBM) 48-136 Malibu 1960  
Elev. 18.616  
Bronze Tablet, South Side of Pacific  
Coast Highway at Trancas Creek Bridge  
at West End of Walk. Marked R-49, 1928  
Reset 1938.



- NOTES:
1. PROVIDE STAKES ON THE PROPERTY LINE OR PROPERTY LINES PRODUCED AT RIGHT ANGLES TO THE SEWER LINE AT THE CENTER LINE OF EACH MANHOLE.
  2. NO REPRESENTATIVE OF THE COUNTY ENGINEER WILL SURVEY OR LAY OUT ANY PORTION OF THE WORK.
  3. THE PRIVATE ENGINEER SHALL FURNISH THE COUNTY ENGINEER WITH GRADE SHEETS AND STATIONING FOR ALL HOUSE LATERALS AND Y BRANCHES AND SHALL PROVIDE STAKES FOR THEM AT THEIR PROPER LOCATIONS WITH STATIONING PLAINLY MARKED. ANY CHANGE IN LOCATION SHALL BE REQUESTED IN WRITING BY THE PRIVATE ENGINEER. ALL HOUSE LATERALS SHALL BE CONSTRUCTED IN A STRAIGHT ALIGNMENT AT RIGHT ANGLES FROM MAIN LINE SEWERS EXCEPT AS SHOWN ON THIS PLANS. ANY CHANGE IN ALIGNMENT SHALL BE REQUESTED IN WRITING BY THE PRIVATE ENGINEER.
  4. THE PRIVATE ENGINEER SHALL FURNISH THE HOUSE LATERAL DEPTH AT THE PROPERTY LINE BELOW THE TOP OF CURB ELEVATION FOR EACH HOUSE LATERAL ON THE GRADE SHEET.
  5. NO REVISIONS SHALL BE MADE IN THESE PLANS WITHOUT THE APPROVAL OF THE COUNTY ENGINEER.
  6. USE STANDARD MANHOLE FRAMES AND COVERS, S-117.
  7. USE EXTRA STRENGTH PIPE. ALL PIPE IS STANDARD DEPTH, EXCEPT AS NOTED.
  8. USE MECHANICAL COMPRESSION JOINTS FOR ALL V.C.P. JOINTS PER SPEC'S, SECS. 16, 40 & 49.
  9. RESURFACE ALL TRENCH WITHIN PAVED AREA TO MEET L.A. COUNTY ROAD DEPT. OR CALIF. STATE HIGHWAY REQUIREMENTS IN ACCORDANCE WITH PERMITS.
  10. ENCASE FOUR FEET OF SEWER AT POINTS OF INTERFERENCE WITH POLES, CASE III, S-117, WITHIN 3 FT. OF POLES.
  11. HOUSE LATERALS TO BE CONSTRUCTED WITH INVERTS AT PROPERTY LINE 6 FEET BELOW CURB GRADE.
  12. MANHOLES SHALL BE BRICK SEWER STRUCTURES, S-106, PRECAST CONCRETE MANHOLES PER S-105 OR S-107S MAY BE USED AS AN ALTERNATE IN LOCATIONS APPROVED BY THE COUNTY ENGINEER.
  13. FOR ALLOWABLE LEAKAGE TEST USE FORMULA NO. 1, SPEC'S, SEC. 54.
  14. MANHOLE TOPS IN UNIMPROVED RIGHT-OF-WAY TO BE SIX INCHES ABOVE FINISHED GRADE.
  15. THE CONTRACTOR SHALL NOTIFY THE CONSTRUCTION DIVISION BY TELEPHONE, MADISON 9-474, EXT. 81-551 AT LEAST TWENTY-FOUR HOURS BEFORE STARTING ANY WORK UNDER THIS CONTRACT.
  16. STANDARD SPECIFICATIONS DATED MAY 25, 1956 APPLY IN THE CONSTRUCTION OF THIS PROJECT.
  17. SEWERS IN FILLED GROUND COMPACTION.
    - a) NO CONSTRUCTION WILL BE PERMITTED IN FILLED AREAS UNLESS ACCEPTABLE CERTIFICATION IS SUBMITTED TO THE CONSTRUCTION DIVISION OF THE COUNTY ENGINEERS DEPARTMENT THAT RELATIVE COMPACTION IS GREATER THAN 80%.
    - b) IF COMPACTION IS LESS THAN 90% THE SEWER MUST BE GRADED AS SHOWN ON THE PLANS PER S-156.
    - c) IF COMPACTION IS GREATER THAN 90% EITHER GRADING FOR SPECIAL MANHOLE BASIS WILL BE REQUIRED.
  18. IF DURING THE COURSE OF CONSTRUCTION IT IS DETERMINED THAT THERE IS LESS THAN 4 FT. OF COVER OVER THE TOP OF A MAIN LINE OR HOUSE LATERAL V.C.P. SEWER WHICH IS NOT INDICATED ON THE PLANS, THE PIPE SHALL BE ENCASED PER S-10-172, CASE II, UNLESS OTHERWISE APPROVED BY THE COUNTY ENGINEER.
  19. ALL STATE AND LOCAL TRENCH SAFETY ORDERS WILL BE RIGIDLY ENFORCED.

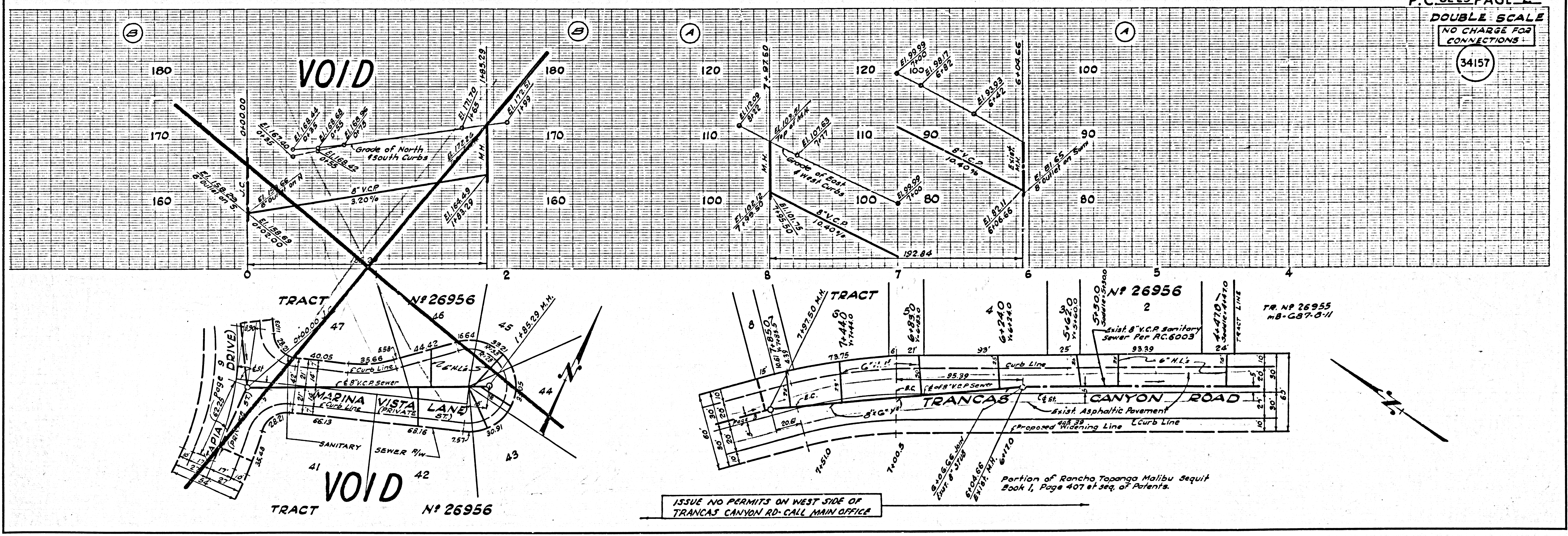
REVISIONS:  
Eliminated house laterals to Lots 41, 53, incl. as shown on pages 9 and 10, and eliminated the main line sewer, house laterals, manhole, & Marina Vista Lane as shown on page 2, and 9 and 10.  
BY: Steven Stebernyk Date: 6-26-64  
STEVEN STEBERNYK RE. 14046 REG. C. E. NO. 12156  
Approved: Office of County Engr. Date:

NO CHARGE FOR CONNECTIONS  
2. 12/1/62 12-21-64

NOTE:  
GRADES TO WHICH THIS IMPROVEMENT IS TO BE CONSTRUCTED ARE SHOWN ON PLANS AND PROFILES. GRADE POINTS FOR TOP OF CURBS, CENTER LINE OF STREETS, OR CENTER LINE OF ALLEYS ARE SHOWN BY CIRCLES ON PROFILES. AT ALL POINTS BETWEEN DESIGNATED POINTS THE GRADE SHALL BE ESTABLISHED SO AS TO CONFORM TO A STRAIGHT LINE DRAWN BETWEEN SAID DESIGNATED POINTS.  
ELEVATIONS ARE IN FEET ABOVE U.S.C. & G.S. SEA LEVEL DATUM OF 1929.  
THIS DRAWING AND THE DATA HEREON ARE HEREBY MADE A PART OF THE SPECIFICATIONS.  
WORK SHALL BE CONSTRUCTED ACCORDING TO SPECIFICATIONS ON FILE IN THE OFFICE OF THE COUNTY ENGINEER AND SHALL BE PROSECUTED ONLY IN THE PRESENCE OF THE COUNTY ENGINEER.  
BEFORE WORK CAN BE STARTED, THE CONTRACTOR MUST OBTAIN A PERMIT TO EXCAVATE IN COUNTY STREETS FROM THE L.A. COUNTY ROAD DEPT., DISTRICT OFFICE NO. 2 AND PAY A FEE TO THE COUNTY ENGINEER, ROOM 310 COUNTY BLDG. 108 W 2ND ST. SUFFICIENT TO COVER THE COST OF CONSTRUCTION INSPECTION AND RECORD PLANS.  
APPROVAL OF THIS PLAN BY THE COUNTY OF LOS ANGELES DOES NOT CONSTITUTE A REPRESENTATION AS TO THE ACCURACY OF THE LOCATION OR THE EXISTENCE OR NON-EXISTENCE OF ANY UNDERGROUND UTILITY PIPE, OR STRUCTURE WITHIN THE LIMITS OF THIS PROJECT. THIS NOTE APPLIES TO ALL PAGES.  
IF WORK IS TO BE DONE IN STATE HIGHWAY, A PERMIT MUST BE OBTAINED FROM THE STATE OF CALIFORNIA, DIVISION OF HIGHWAYS, 126 SOUTH SPRING STREET.

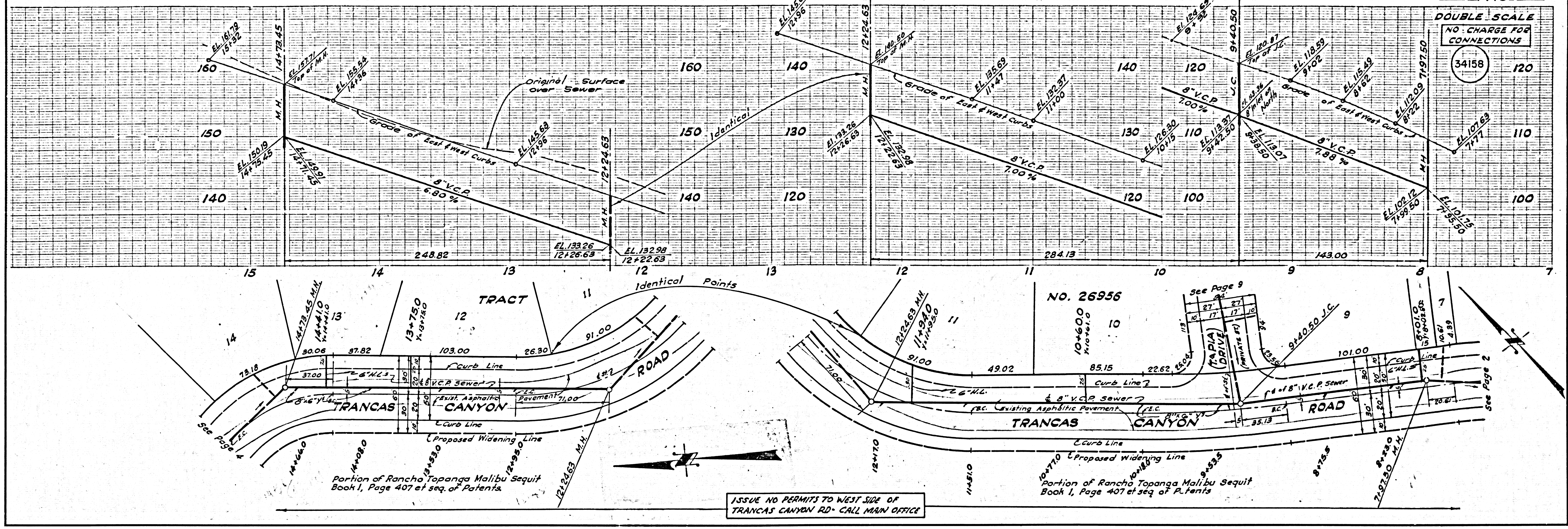
COUNTY OF LOS ANGELES, CALIFORNIA  
APPROVED, JOHN A. LAMBIE, COUNTY ENGINEER  
BY: [Signature] ASST. SANITATION ENGINEER  
CHECKED BY: [Signature] OFFICE OF COUNTY ENGINEER, REG. C. E. NO. 2406  
SUBMITTED: [Signature] PALMS VERDES-CENTINELLA VALLEY REGIONAL ENGINEER

P.C. 6229 PAGE 2  
DOUBLE SCALE  
NO CHARGE FOR CONNECTIONS  
34157



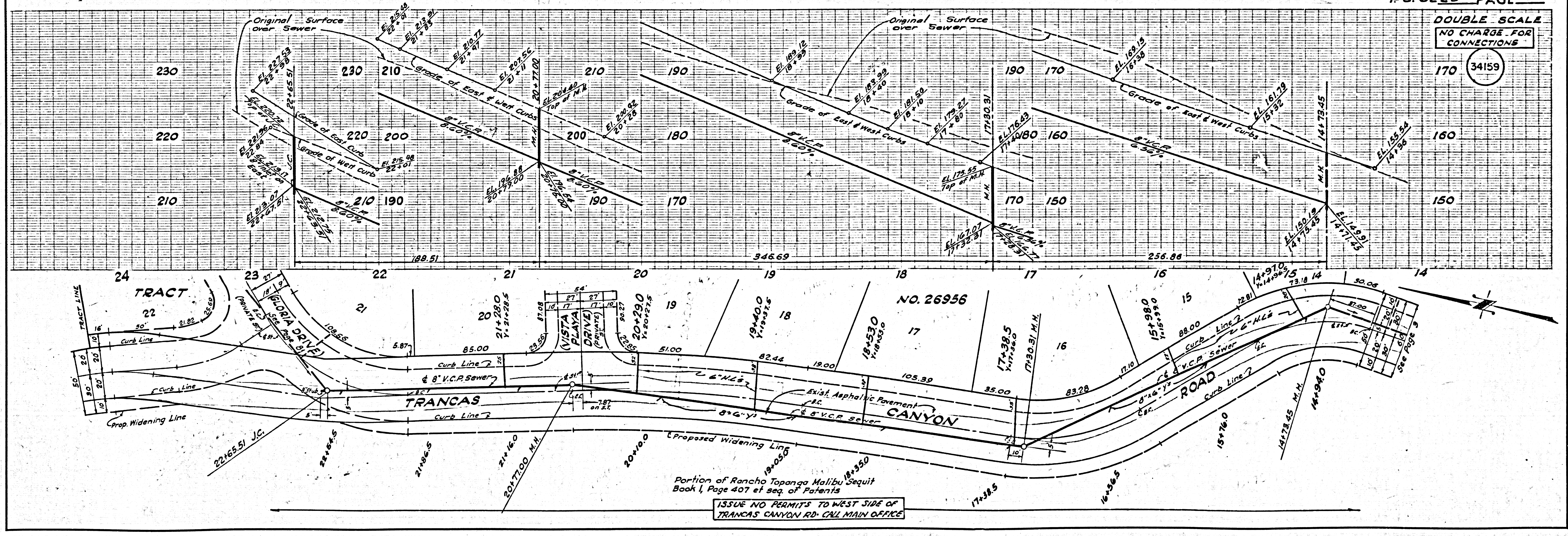
ISSUE NO PERMITS ON WEST SIDE OF TRANCAS CANYON RD. CALL MAIN OFFICE

DOUBLE SCALE  
NO CHARGE FOR  
CONNECTIONS  
34158



ISSUE NO PERMITS TO WEST SIDE OF  
TRANCAS CANYON RD. CALL MAIN OFFICE

DOUBLE SCALE  
NO CHARGE FOR  
CONNECTIONS  
34159



ISSUE NO PERMITS TO WEST SIDE OF  
TRANCAS CANYON RD. CALL MAIN OFFICE

