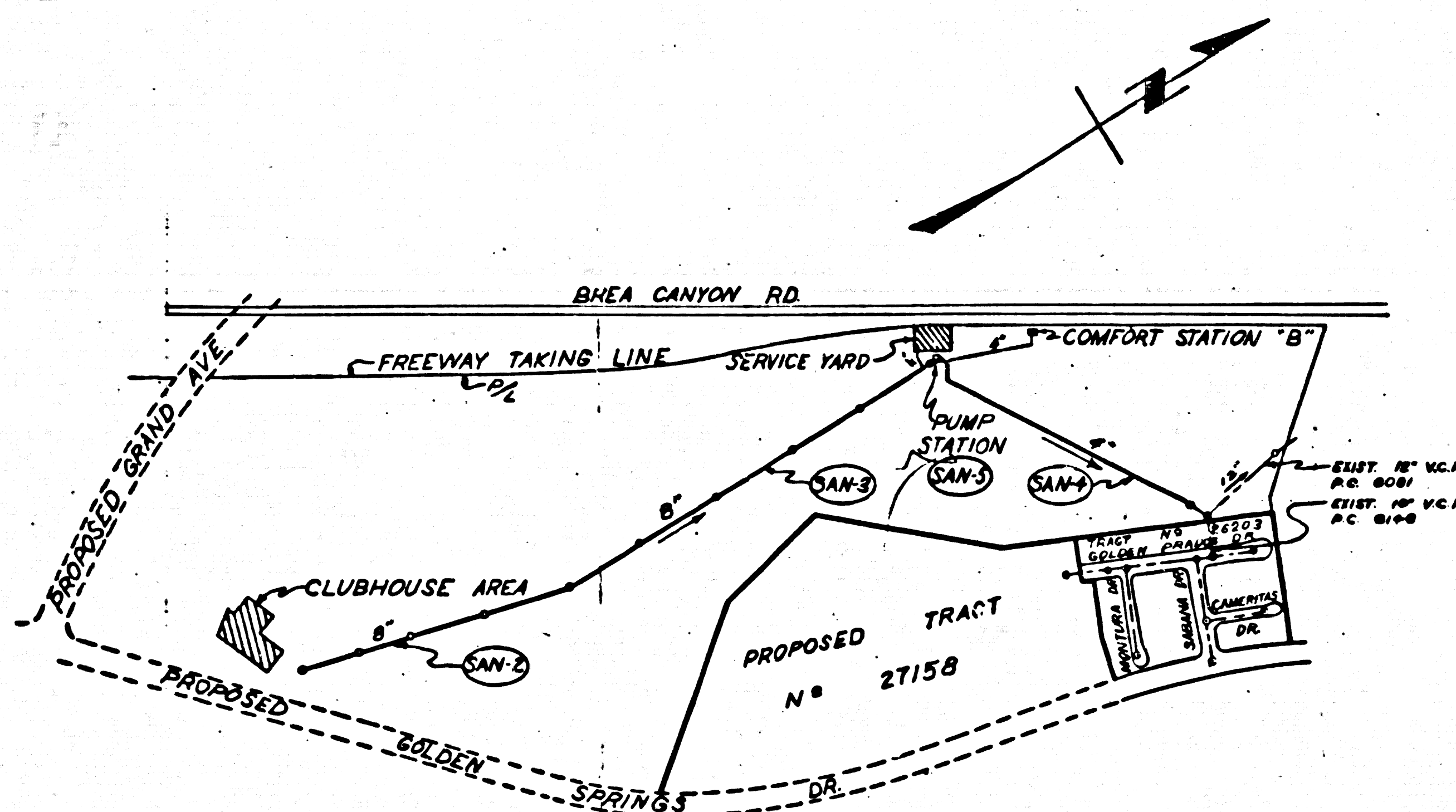


BM. El. 676.648, F.B. 2667-123
 Brea Canyon Rd., South Side
 Br. Spk. in Conc. 25' W. of W. End Conc. H.W.
 At Sta. 298+00 per State Highway

GENERAL NOTES

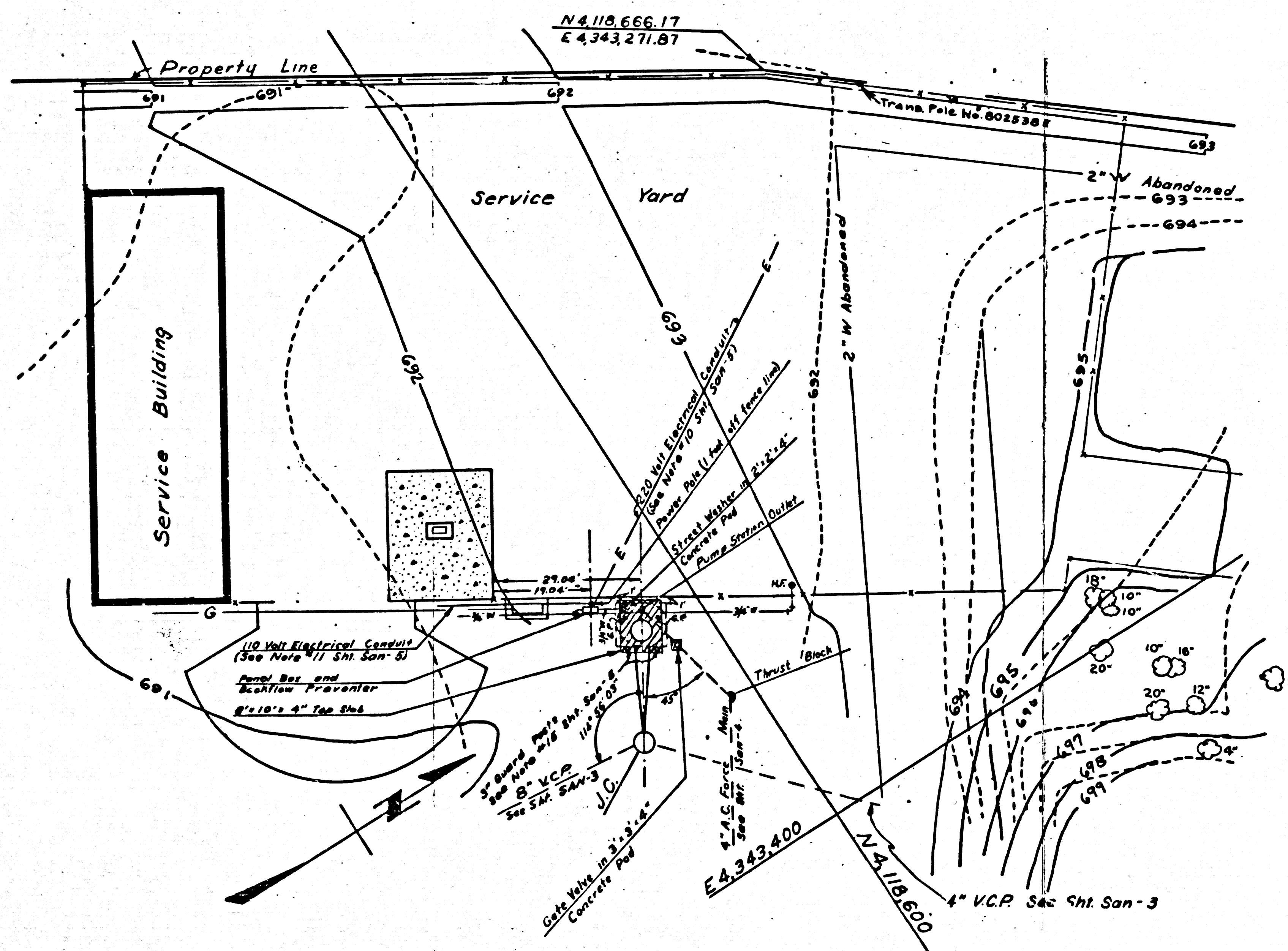
1. USE MECHANICAL COMPRESSION JOINTS FOR ALL V.C.P., PER SPECIFICATIONS SECTIONS 56, 48 AND 49. (SEE "S" BELOW)
2. USE EXTRA STRENGTH PIPE. ALL PIPE STANDARD DEPTH EXCEPT AS NOTED.
3. ALL STRUCTURES SHALL BE BRICK SEWER STRUCTURES PER PLAN NO. S-104 EXCEPT AS NOTED.
4. USE STANDARD MANHOLE FRAMES & COVERS PER PLAN NO. S-117.
5. THE CONTRACTOR SHALL NOTIFY THE CONSTRUCTION DIVISION BY TELEPHONE MADISON 9-4747 EXT. 81551 AT LEAST 24 HOURS BEFORE STARTING ANY WORK UNDER THIS CONTRACT.
6. LOS ANGELES COUNTY STANDARD SPECIFICATIONS FOR THE CONSTRUCTION OF SANITARY SEWERS DATED MAY 25, 1962 APPLY IN THE CONSTRUCTION OF THIS PROJECT.
7. USE FORMULA NO. 1, SEC. 54 OF STND. SPECS. TO COMPUTE ALLOWABLE LEAKAGE IN V.C.P. AND C.I.P.
8. ELEVATIONS ARE IN FEET ABOVE U.S.C. & G.S. SEA LEVEL DATUM OF 1929.
9. APPROVAL OF THIS PLAN BY THE COUNTY OF LOS ANGELES DOES NOT CONSTITUTE A REPRESENTATION AS TO THE ACCURACY OF THE LOCATION OF, OR THE EXISTENCE OR NONEXISTENCE OF, ANY UNDERGROUND UTILITY PIPE OR STRUCTURE WITHIN THE LIMITS OF THIS PROJECT.
10. THIS DRAWING & THE DATA HEREON ARE HEREBY MADE A PART OF THE SPECIFICATIONS.
11. FOR LEGEND SEE PLAN S-64.
12. A COPPER WIRE SHALL BE LAID IN ALL FORCE MAIN TRENCHES ON TOP OF PIPE PER SPECS.
13. GRADES TO WHICH THIS SEWER IS TO BE CONSTRUCTED ARE SHOWN ON THIS PLAN & PROFILE. AT ALL POINTS BETWEEN DESIGNATED POINTS THE GRADE SHALL BE ESTABLISHED SO AS TO CONFORM TO A STRAIGHT LINE BETWEEN SAID DESIGNATED POINTS.
14. TOPS OF SEWER STRUCTURES SHALL BE ADJUSTED TO FINISHED GRADE UNLESS OTHERWISE NOTED ON PLANS. ALL SEWER STRUCTURES THAT ARE NOT BROUGHT TO FINISHED GRADE SHALL BE IDENTIFIED BY MANHOLE MARKERS PER DETAIL THIS SHEET.



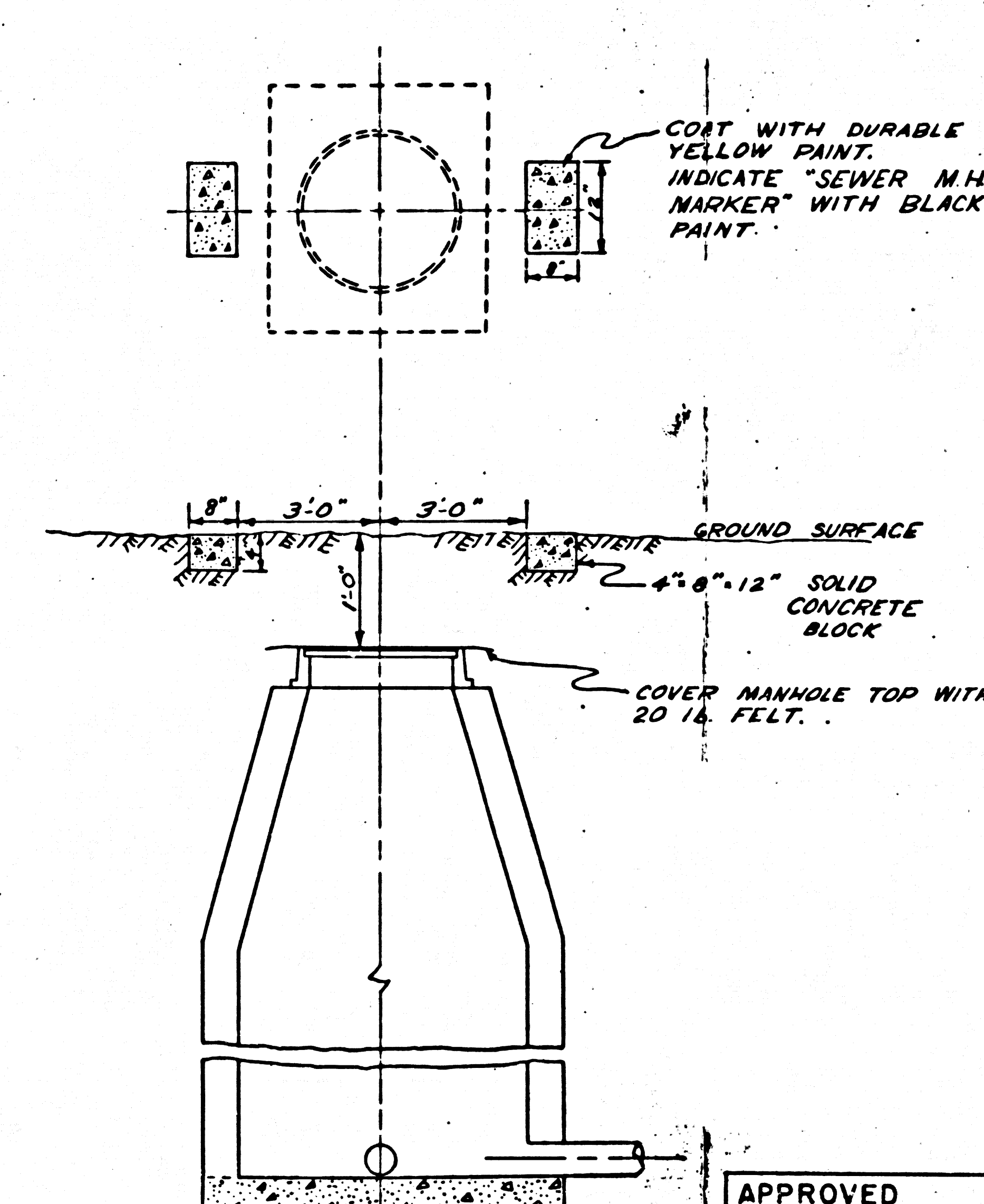
INDEX MAP
 SCALE: 1"=600'
 P.C. 6233
 W.S. 39, C-3

ALL STATE AND LOCAL TRENCH SAFETY ORDERS WILL BE RIGIDLY ENFORCED.

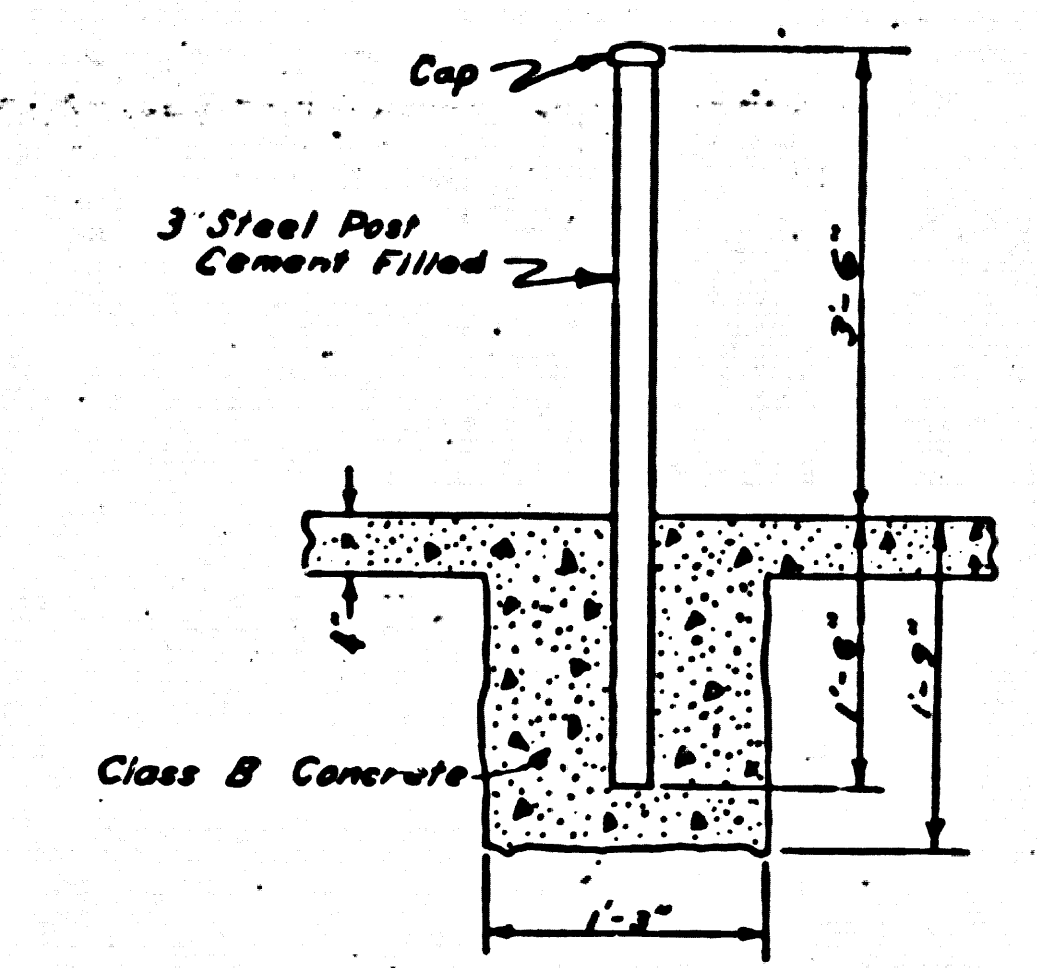
NO CONNECTIONS FOR THE DISPOSAL OF INDUSTRIAL WASTES SHALL BE MADE TO SEWERS SHOWN ON THESE DRAWINGS WITHOUT WRITTEN PERMISSION FROM THE CHIEF ENGINEER AND GENERAL MANAGER OF THE COUNTY SANITATION DISTRICTS.



PUMP STATION PLOT PLAN
 For Details See Sheet San-5
 SCALE: 1"=20'



MANHOLE MARKER DETAIL
 NO SCALE

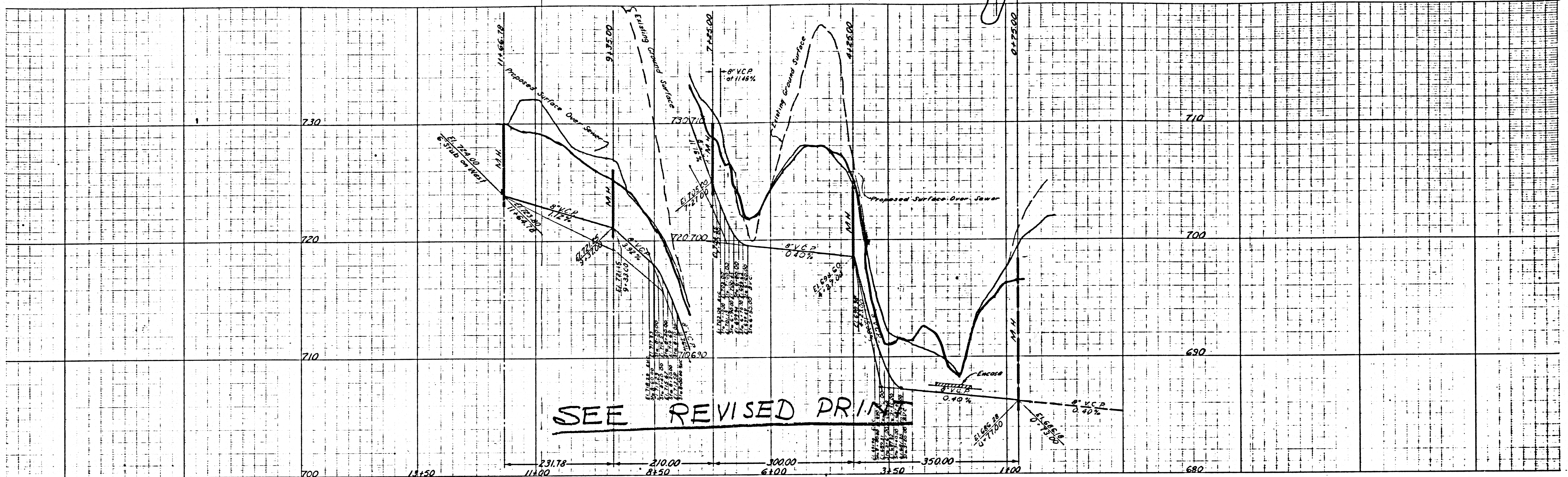


DETAIL OF GUARD POST

CONTOUR LEGEND
 --- 692 --- Existing Contour Line
 --- 690 --- Proposed Contour Line

NOTE:
 ALL GRADING SHALL BE COMPLETED PRIOR TO SEWER INSTALLATION

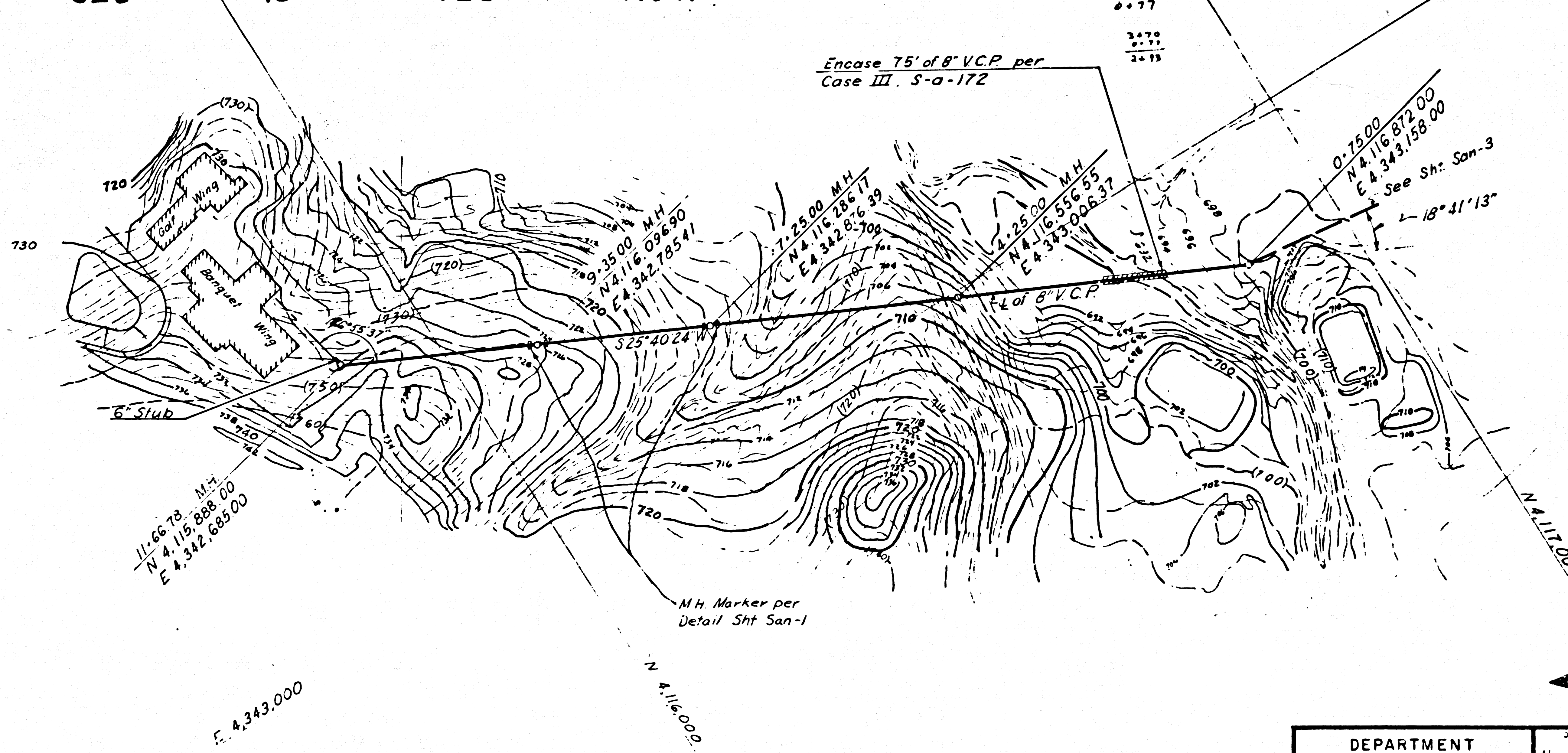
APPROVED John D. Parkhurst CHIEF ENGINEER OF COUNTY SANITATION DISTRICT # 21 BY: <i>J. Parkhurst</i> OFFICE ENGINEER	DATE Nov. 1962	SANITARY SEWER SYSTEM GENERAL DEVELOPMENT DIAMOND BAR GOLF COURSE 22801 EAST GOLDEN SPRINGS DRIVE POMONA, CALIFORNIA	SPED. NO. 1305 OF 1962
	DESIGNED BY Felling TRACED BY Valder CHECKED BY McMillan PRIVATE CONTR. 6233 SCALED As Shown		WORK ORDER 9971.02 CAPITAL PROJ. 9971 SHEET NO. SAN-1



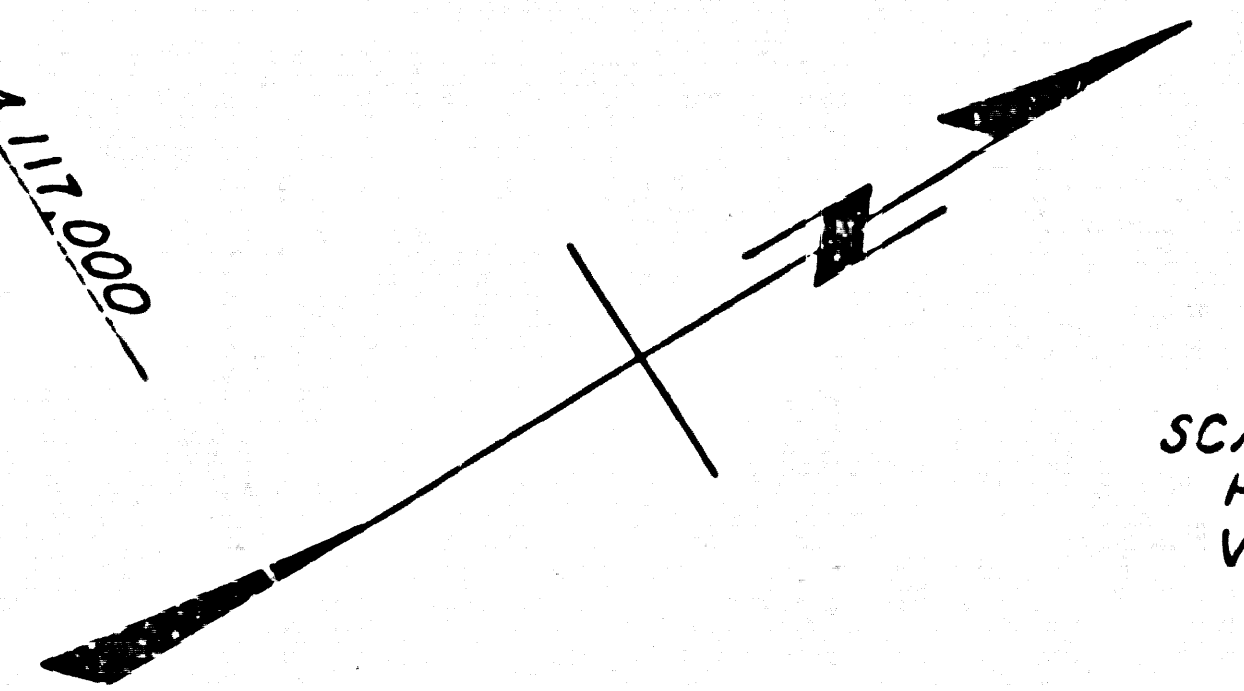
SEE REVISED PRINT

POR SEC 10 T2S R9W SBM

E 4,342,000



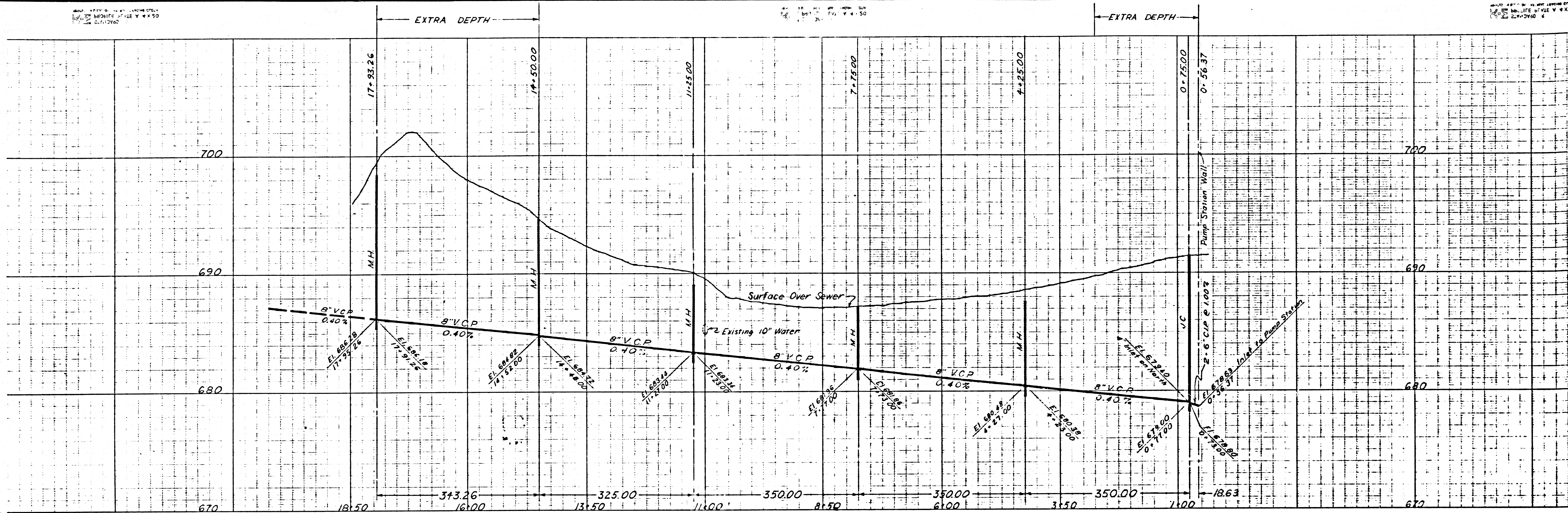
Ben Corra
714-595-3300



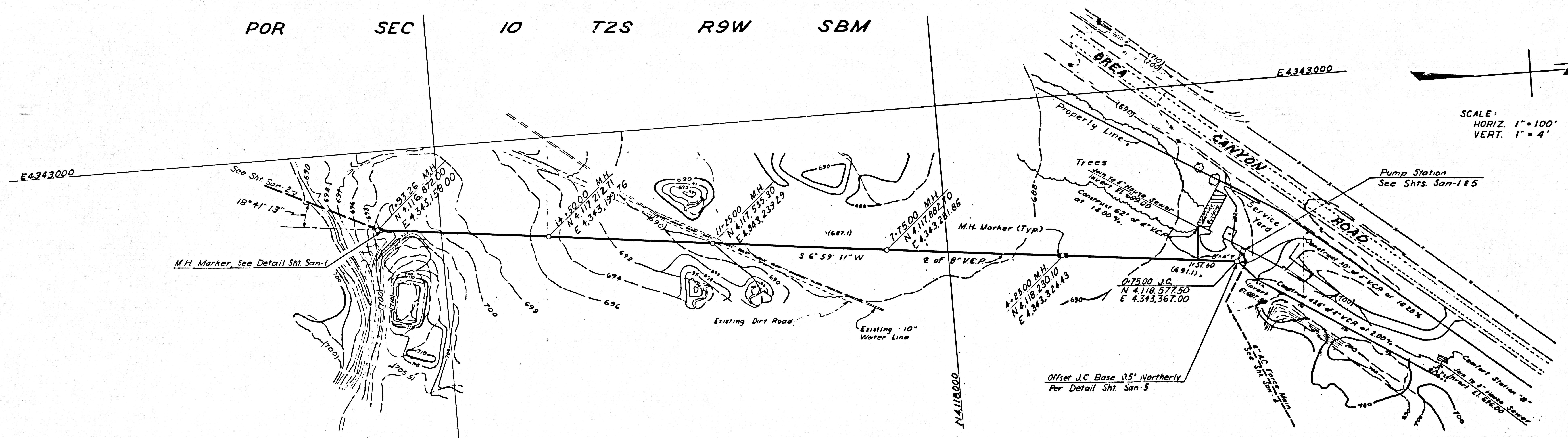
SCALE:
HORIZ. 1" = 100'
VERT. 1" = 4'

POR SEC 10 T2S R9W SBM

DEPARTMENT OF COUNTY ENGINEER SANITATION DIVISION COUNTY OF LOS ANGELES	DATE:	Nov 1962	SPEC. NO. 2309 #1962 WORK ORDER 9971.02 CAPITAL PROJ. 9971 SHEET NO. SAN-2 OF
	DESIGNED BY:	Jaime	
	TRACED BY:	McMillan	
	CHECKED BY:	Felling	
	PRIVATE CONTR.:	6233	
SCALES:	As Shown	SANITARY SEWER GENERAL DEVELOPMENT DIAMOND BAR GOLF COURSE 22801 EAST GOLDEN SPRINGS DRIVE POMONA, CALIFORNIA	



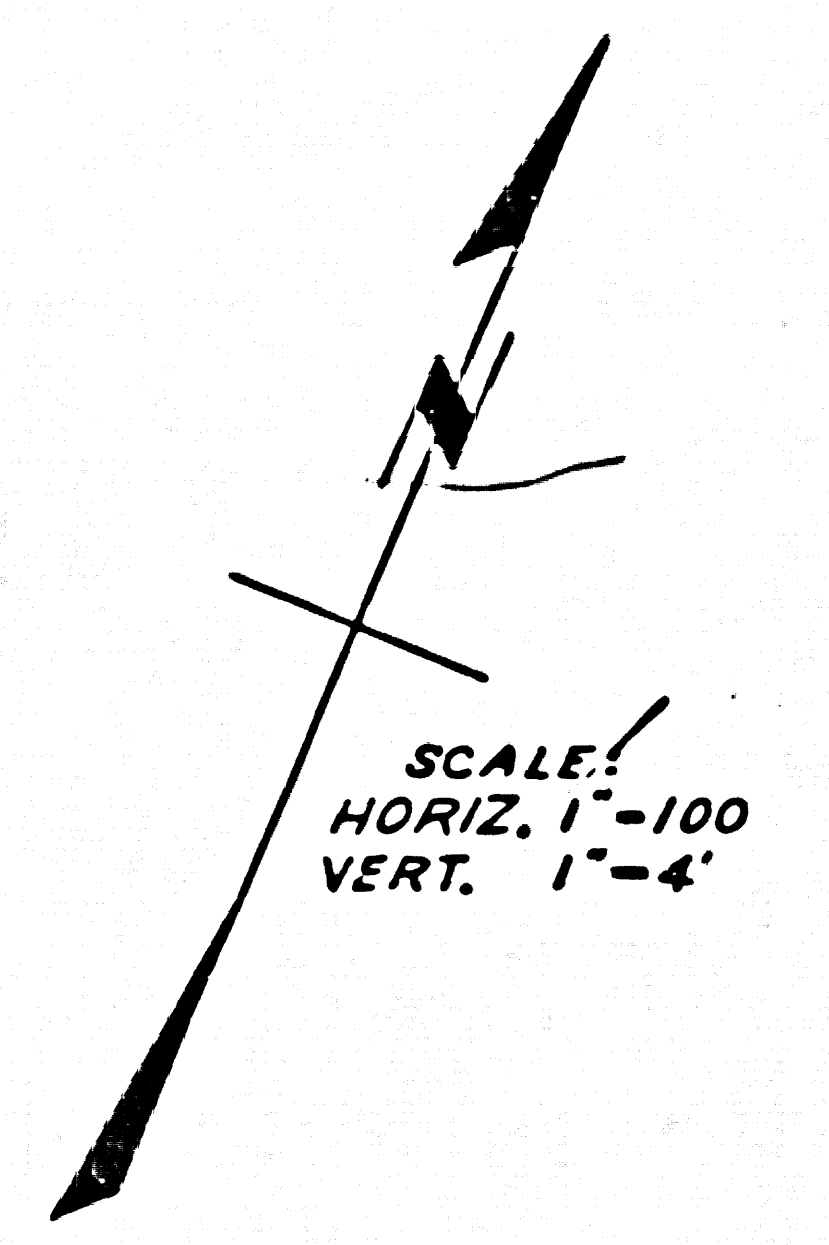
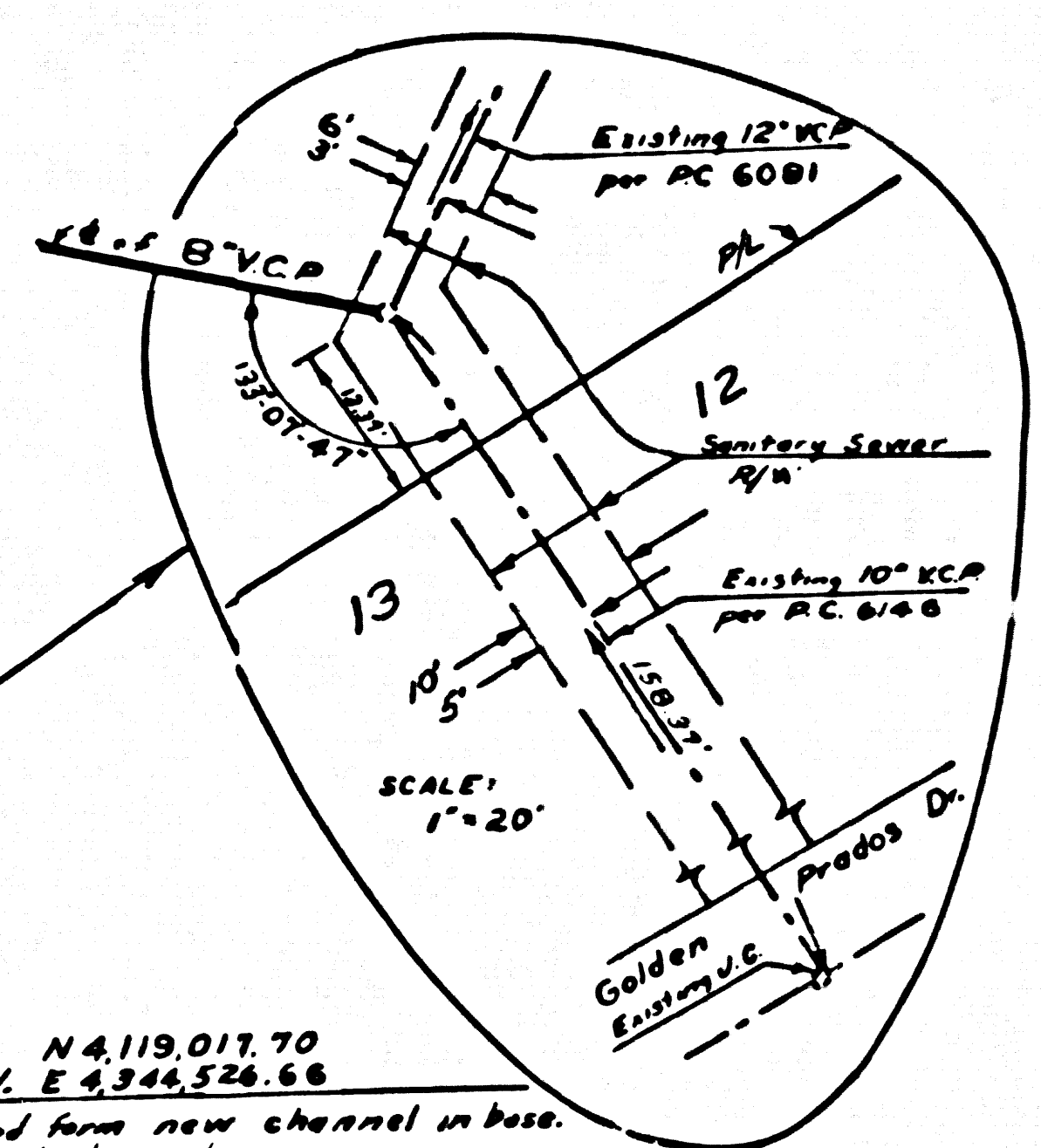
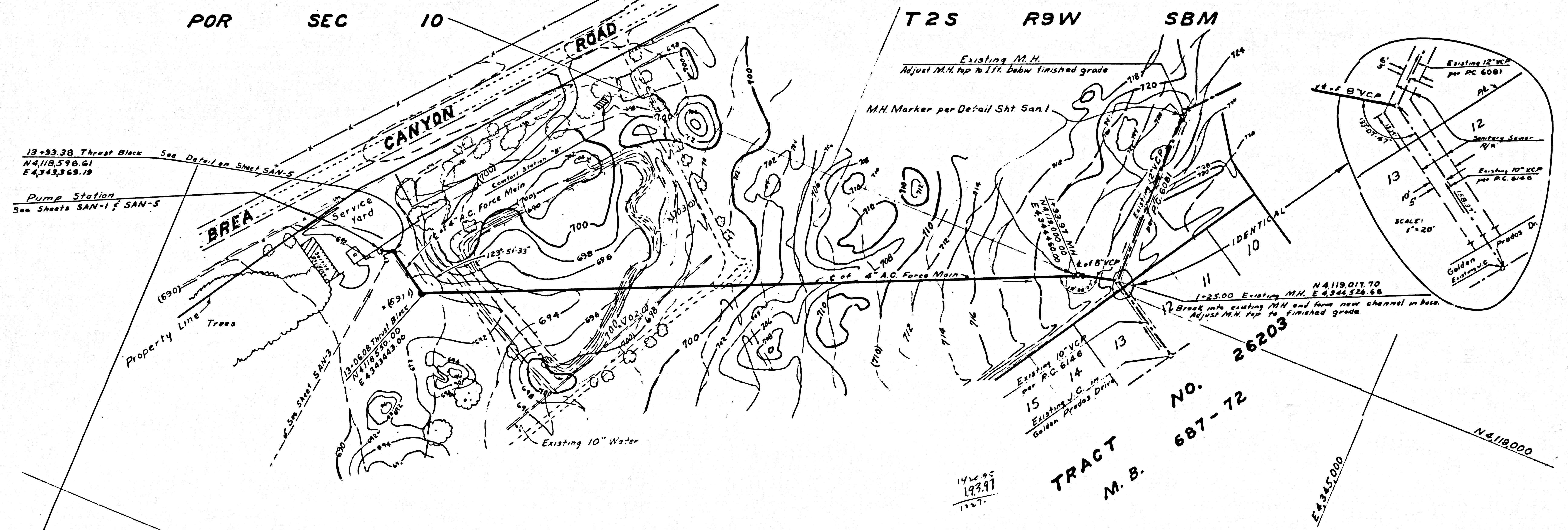
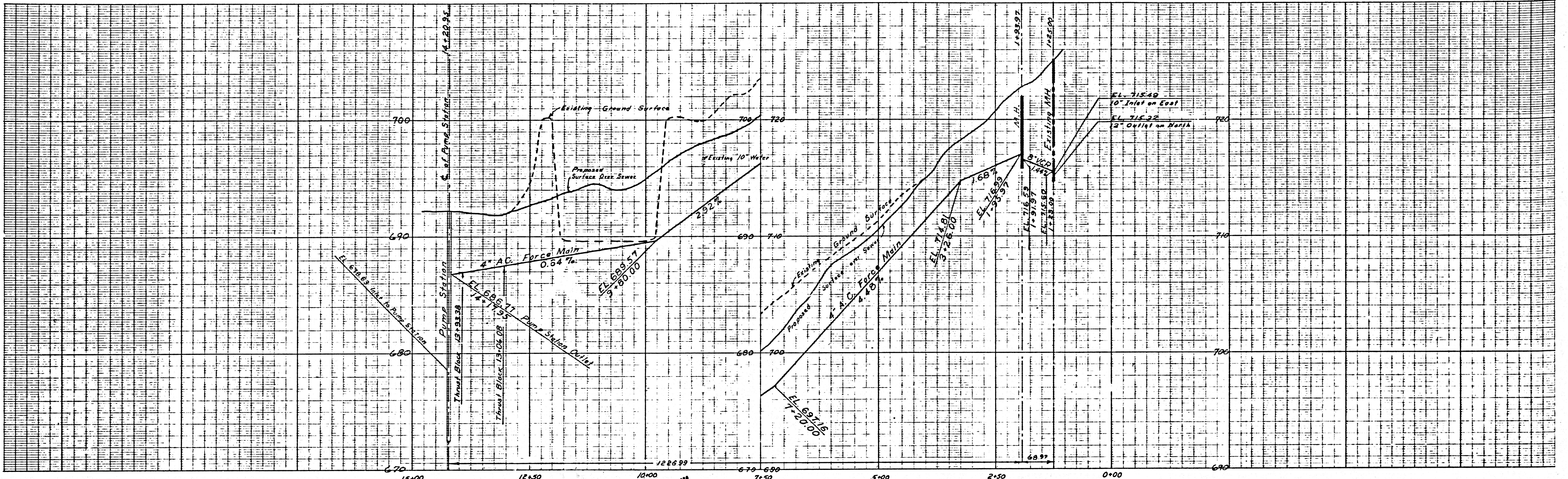
POR SEC 10 T2S R9W SBM



Note: Contractor to verify location and depth of 10" water line in field

POR SEC 10 T2S R9W SBM

DEPARTMENT OF COUNTY ENGINEER SANITATION DIVISION COUNTY OF LOS ANGELES	DATE Nov. 1962	SANITARY SEWER GENERAL DEVELOPMENT DIAMOND BAR GOLF COURSE 22801 EAST GOLDEN SPRINGS DRIVE POMONA, CALIFORNIA	SHEET NO. 2309 OF 1962
	DESIGNED BY Felling TRACED BY Velder CHECKED BY McMillan PRIVATE CONTR. 6233 SCALES As Shown		SHEET NO. 9971.02 SERIAL NO. 9971 SHEET NO. SAN-3



Note: Contractor to verify location and depth of 10" water line in field.

TRACT NO. 26203
M. B. 687-72

DEPARTMENT OF COUNTY ENGINEER SANITATION DIVISION COUNTY OF LOS ANGELES

DATE Nov. 1962
DESIGNED BY Felling
TRACED BY McMillan
CHECKED BY Velder
PRIVATE CONTR. 6233
SCALE As Shown

FORCE MAIN
GENERAL DEVELOPMENT
DIAMOND BAR GOLF COURSE
22801 EAST GOLDEN SPRINGS DRIVE
POMONA, CALIFORNIA

SPEC. NO. 2309
OF 1962
WORK ORDER 9971.02
CAPITAL PROJ. 9971
SHEET NO. SAN-4

