

SAN DIMAS BLDG. DIST. NO. 10

PROFILE ALIGNMENT AND GRADE OF P.C. 6235

SANITARY SEWERS PAGE 1

TO BE CONSTRUCTED IN
MOUNTAIN AVENUE

PRIVATE CONTRACT NO. 6235

W.S. 49

3 SHEETS; 5 PAGES

SCALE: VERT. 1"=4' HORIZ. 1"=40' MAY, 1962

PREPARED IN THE OFFICES OF
ANDREASEN ENGINEERING COMPANY
777 E. HOLT AVE.
POMONA, CALIFORNIA

By: C.S. Jordan 5/28/62
REG. C. E. NO. 10618

FOR LEGEND SEE PLAN NO. S-A-44

NOTE:
GRADES TO WHICH THIS IMPROVEMENT IS TO BE CONSTRUCTED ARE SHOWN ON PLANS AND PROFILES. GRADE POINTS FOR TOP OF CURBS, CENTER LINE OF STREETS, OR CENTER LINE OF ALLEYS ARE SHOWN BY CIRCLES ON PROFILES AT ALL POINTS BETWEEN DESIGNATED POINTS THE GRADE SHALL BE ESTABLISHED SO AS TO CONFORM TO A STRAIGHT LINE DRAWN BETWEEN SAID DESIGNATED POINTS.
ELEVATIONS ARE IN FEET ABOVE U.S.C. & G.S. SEA LEVEL DATUM OF 1929.
THIS DRAWING AND THE DATA HEREON ARE HEREBY MADE A PART OF THE SPECIFICATIONS.
WORK SHALL BE CONSTRUCTED ACCORDING TO SPECIFICATIONS ON FILE IN THE OFFICE OF THE COUNTY ENGINEER AND SHALL BE PROSECUTED ONLY IN THE PRESENCE OF THE COUNTY ENGINEER.
BEFORE WORK CAN BE STARTED, THE CONTRACTOR MUST OBTAIN A PERMIT TO EXCAVATE IN COUNTY STREETS FROM THE L.A. COUNTY ROAD DEPT., DISTRICT OFFICE NO. _____ AND MAKE A DEPOSIT WITH THE COUNTY ENGINEER, ROOM 324 PAN AMERICAN BUILDING, 283 SO. BROADWAY SUFFICIENT TO COVER THE COST OF CONSTRUCTION INSPECTION AND RECORD PLANS.
APPROVAL OF THIS PLAN BY THE COUNTY OF LOS ANGELES DOES NOT CONSTITUTE A REPRESENTATION AS TO THE ACCURACY OF THE LOCATION OF OR THE EXISTENCE OR NON-EXISTENCE OF ANY UNDERGROUND UTILITY PIPE, OR STRUCTURE WITHIN THE LIMITS OF THIS PROJECT. THIS NOTE APPLIES TO ALL PAGES.
IF WORK IS TO BE DONE IN A STATE HIGHWAY, A PERMIT MUST BE OBTAINED FROM THE STATE OF CALIFORNIA, DIVISION OF HIGHWAYS, 128 SOUTH SPRING STREET.

COUNTY OF LOS ANGELES, CALIFORNIA

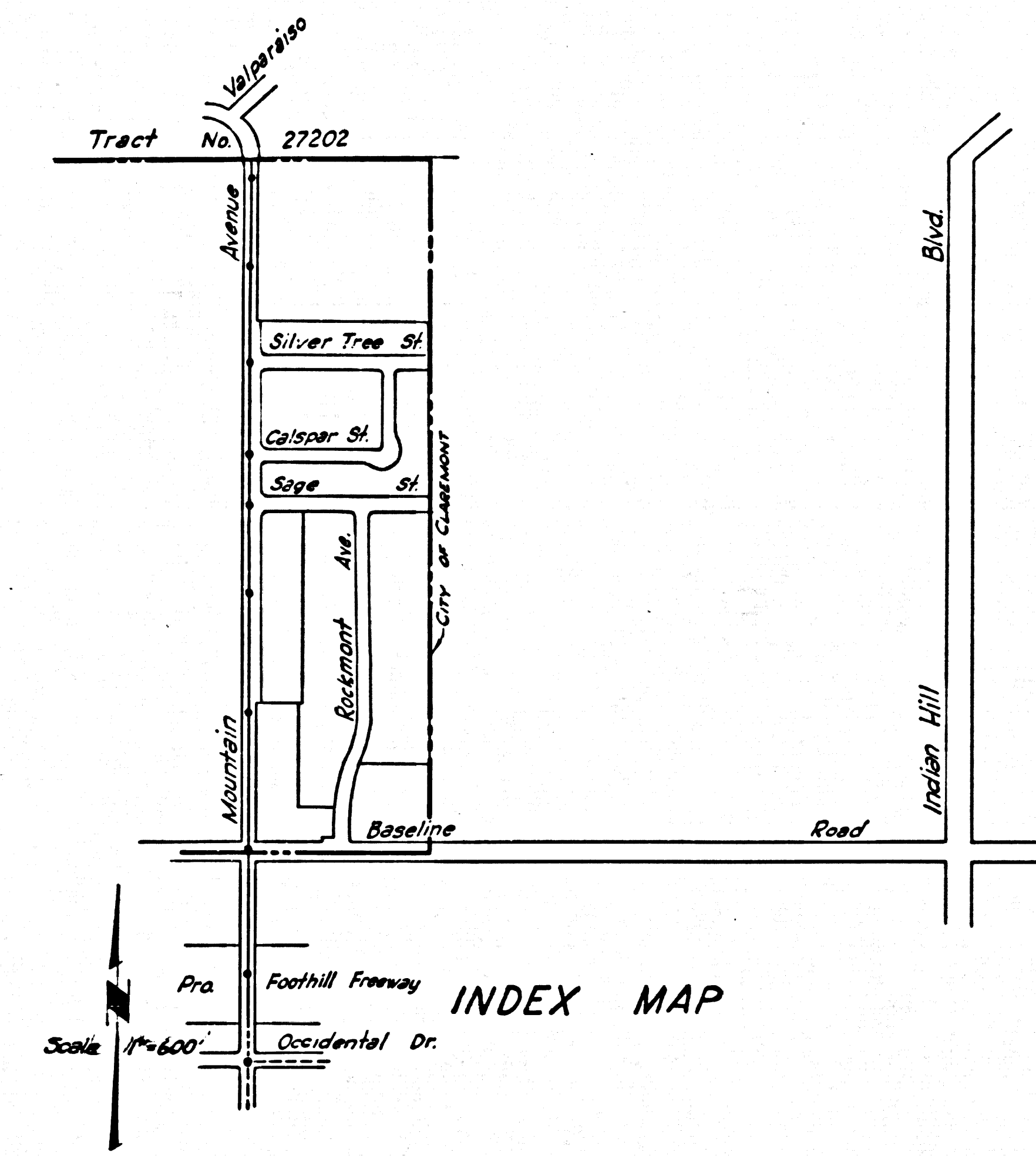
APPROVED, JOHN A. LAMBIE, COUNTY ENGINEER APPROVED, A. M. RAWN, CHIEF ENGINEER
Dist. San. Dist. No. _____

BY: [Signature] Atty. Sanitation Engineer BY: [Signature] Office Engineer

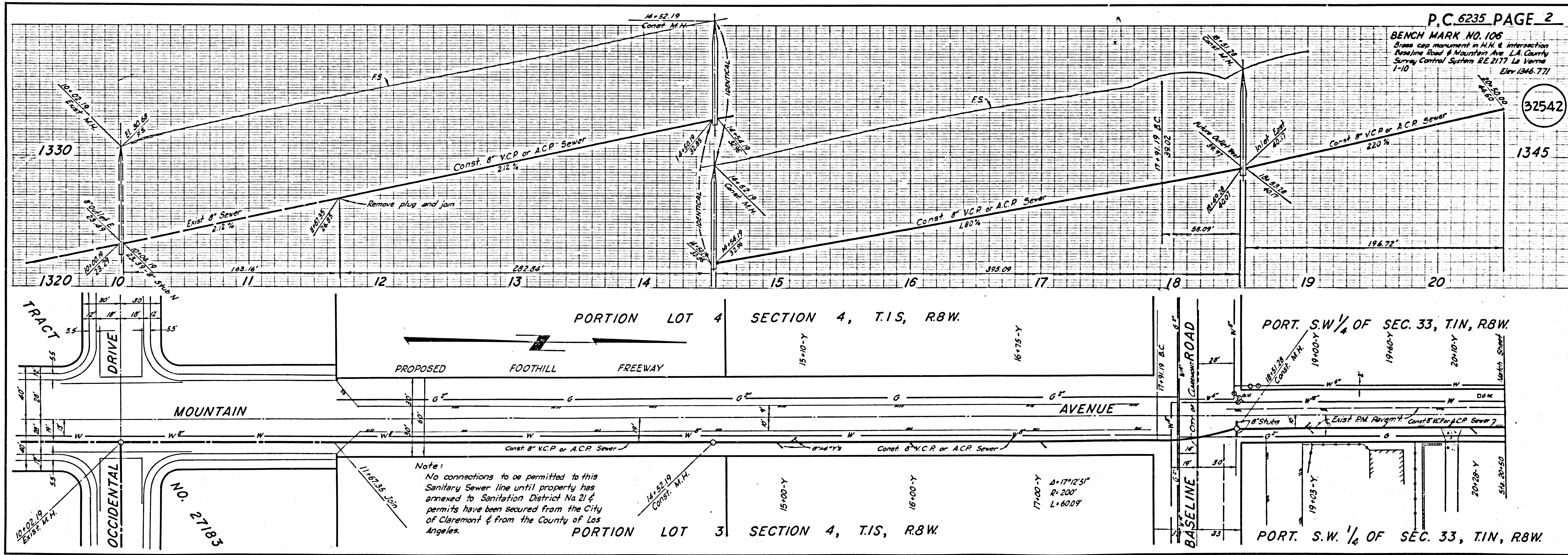
CHECKED BY: _____ OFFICE OF COUNTY ENGINEER, REG. C. E. NO. _____

APPROVED, CITY OF CLAREMONT
[Signature] City Engineer

32541



ESTIMATE OF QUANTITIES:
1. 3,272 LIN. FT. - 8" V.C.P. INCL 60-8-4 Y'S AND PAVEMENT REMOVAL AND RESURFACING
2. 9 EA - STANDARD MANHOLES.



P.C. 6235 PAGE 2

BENCH MARK NO. 106
Bench mark monument in H.M. & intersection
Baseline Road & Mountain Ave. L.A. County
Survey Control System E.E. 2177 La Verne
1-10 Elev. 1346.771

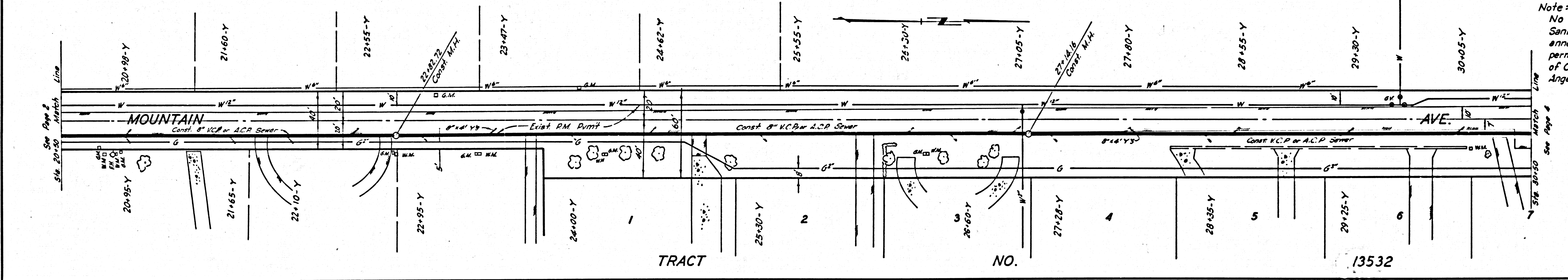
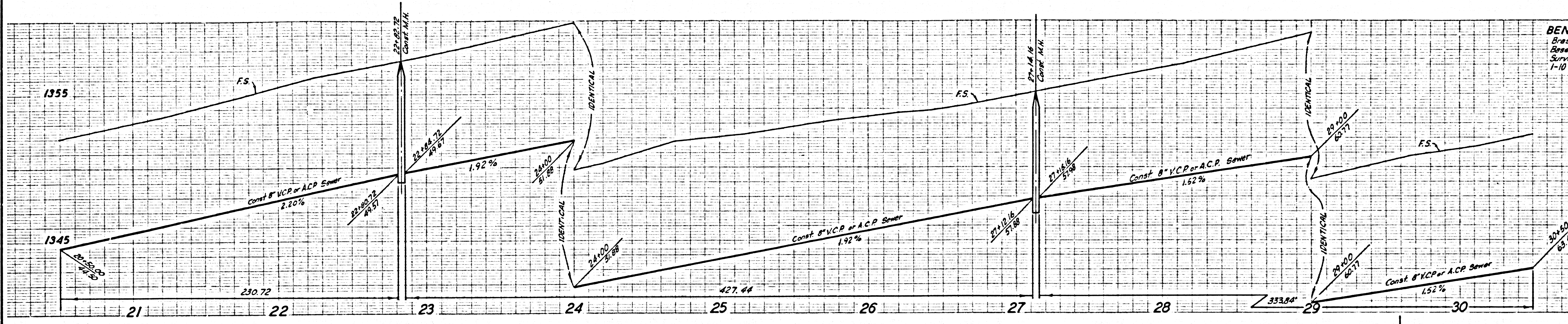
32542

Note:
No connections to be permitted to this Sanitary Sewer line until property has annexed to Sanitation District No. 21 & permits have been secured from the City of Claremont & from the County of Los Angeles.

BENCH MARK NO. 106
 Brass cap monument in R.H. & intersection
 Baseline Road & Mountain Ave. L.A. County
 Survey Control System R.E. 2177 La Verne
 1-10 Elev. 1346.771

1375 1365

32543



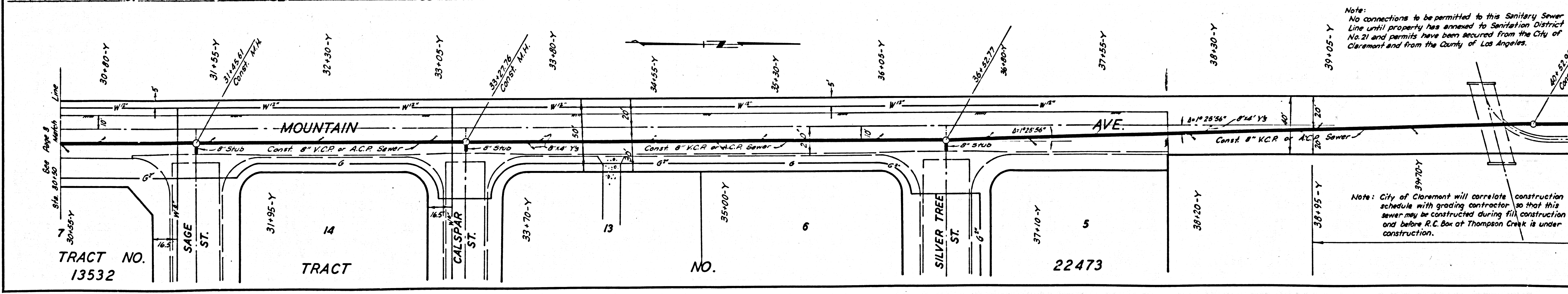
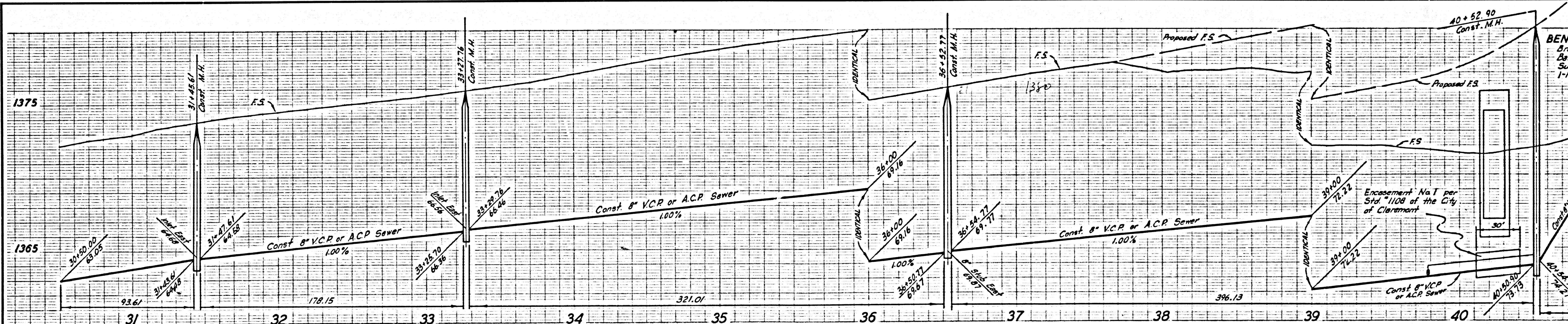
Note:
 No connections to be permitted to this Sanitary Sewer line until property has annexed to Sanitation District No. 21 & permits have been secured from the City of Claremont & from the County of Los Angeles.

13532

BENCH MARK NO. 106
 Brass cap monument in R.H. & intersection
 Baseline Road & Mountain Ave. L.A. County
 Survey Control System R.E. 2177 La Verne
 1-10 Elev. 1346.771

1375 1365

32544



Note:
 No connections to be permitted to this Sanitary Sewer Line until property has annexed to Sanitation District No. 21 and permits have been secured from the City of Claremont and from the County of Los Angeles.

Note: City of Claremont will correlate construction schedule with grading contractor so that this sewer may be constructed during fill construction and before R.C. Box at Thompson Creek is under construction.

TRACT NO. 13532

TRACT

NO.

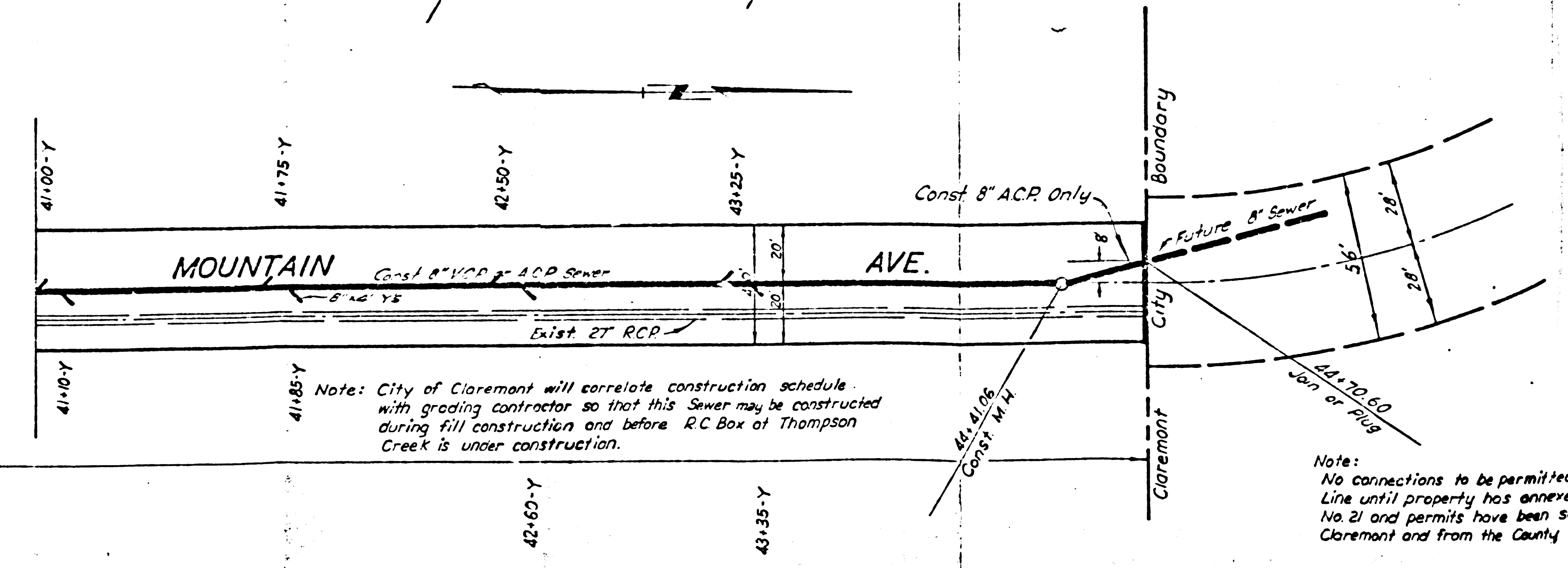
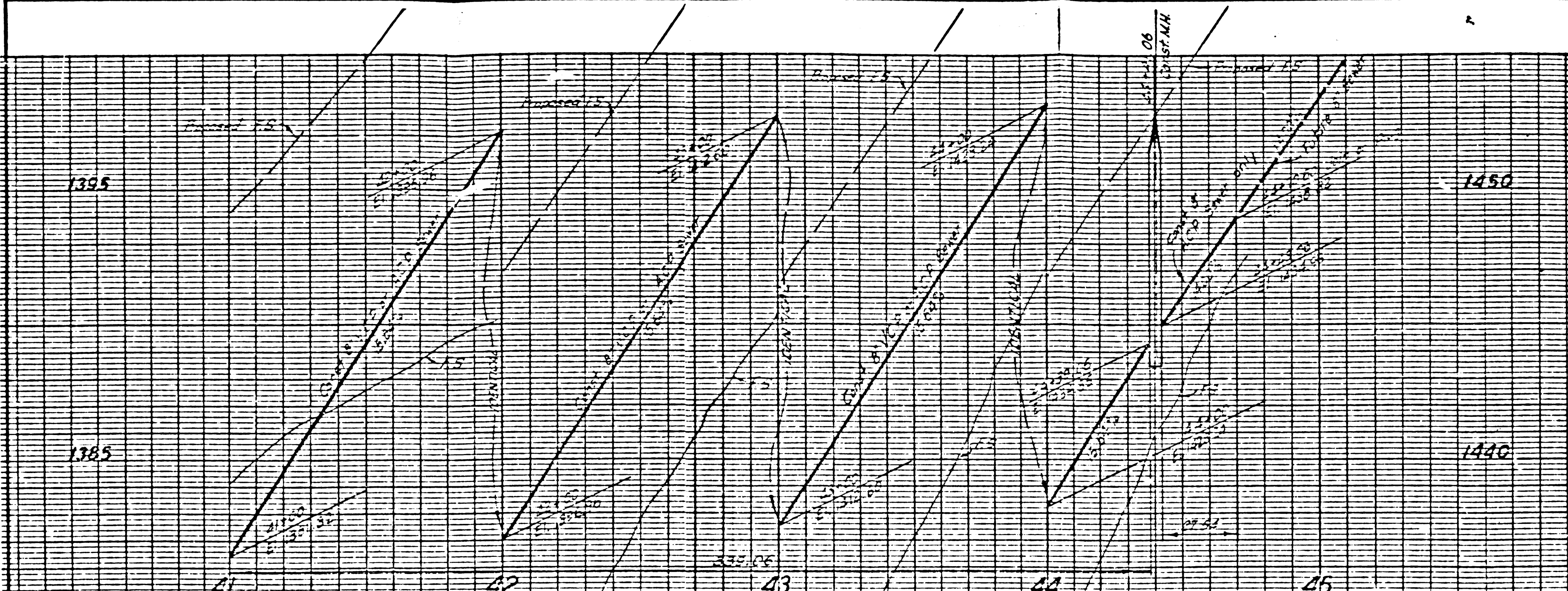
22473

REFERENCE ONLY
PRINTS TO CITY OF CLAREMONT

P.C. 6235 PAGE 5

BENCH MARK NO. 106
Elev. 1440.00
Corner of Mountain Ave. & Thompson Creek
Survey Control Station
1917

32545



Note: City of Claremont will correlate construction schedule with grading contractor so that this Sewer may be constructed during fill construction and before R.C. Box at Thompson Creek is under construction.

Note: No connections to be permitted to this Sanitary Sewer Line until property has annexed to Sanitation District No. 21 and permits have been secured from the City of Claremont and from the County of Los Angeles.