

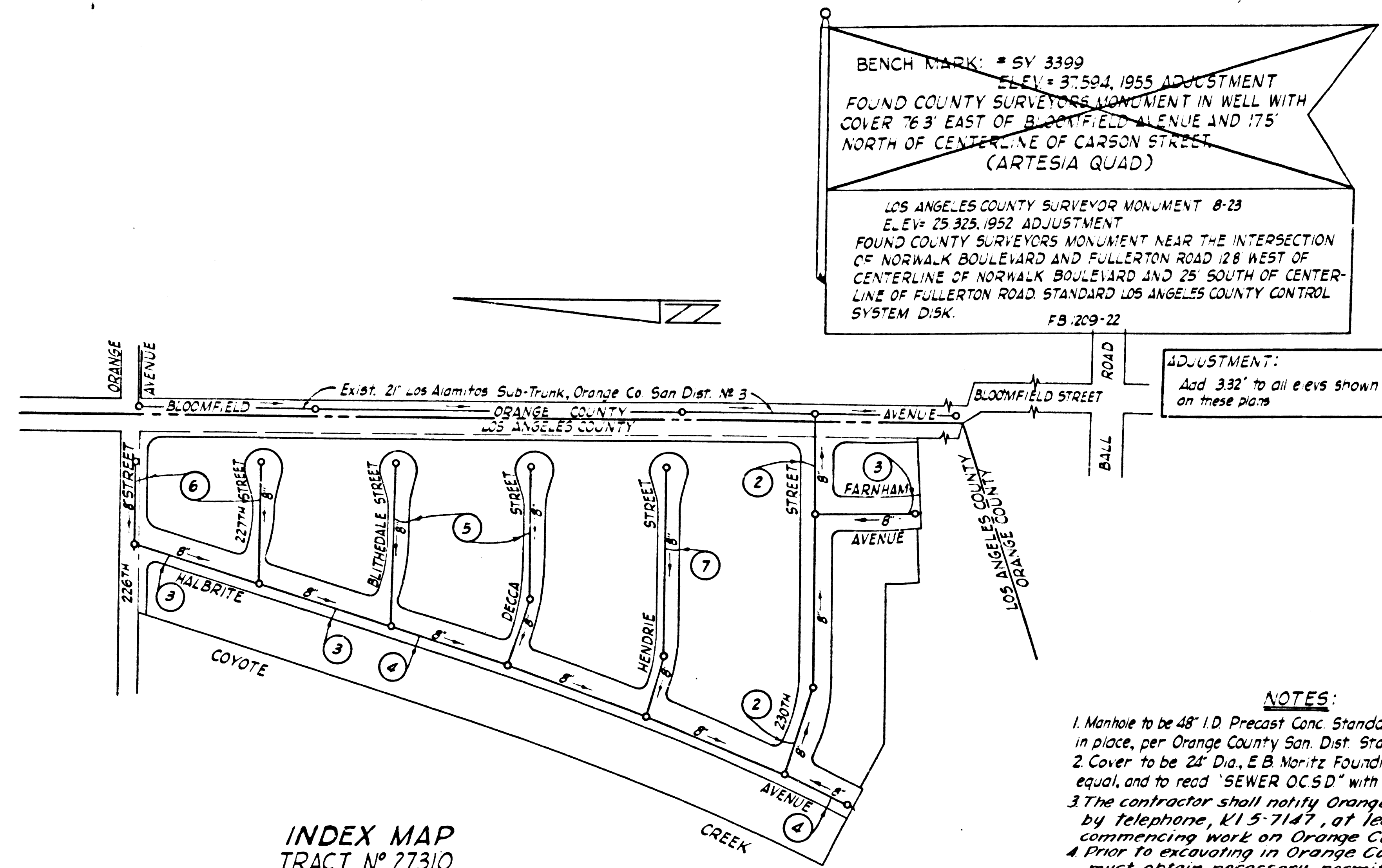
LAKWOOD BLDG. DIST. NO. 43

PROFILE ALIGNMENT AND GRADE OF P.C. 6240
 SANITARY SEWERS PAGE 1
 TO BE CONSTRUCTED IN J.N. 0358.32

TRACT N° 27310
 PRIVATE CONTRACT NO. 6240

W.S. 31
 4 SHEETS; 7 PAGES
 SCALE: VERT. 1" = 4'
 HORIZ. 1" = 40'
 MAY, 1962
 PREPARED IN THE OFFICES OF
LANCO ENGINEERING
 BY: Clark M. Leonard
 CLARK M. LEONARD REG. C. E. NO. 1367
 FOR LEGEND SEE PLAN NO. S-A-64

32810



INDEX MAP
 TRACT N° 27310
 SCALE: 1" = 200'
 P.C. 6240
 J.N. 0358.32

REVISION #2
 ALL LOT NUMBERS CHANGED
 PER TRACT REVISION
 [Signature]
 OFFICE OF COUNTY ENGINEER

CONNECTION CHARGES
 AS INDICATED
 [Signature]
 6-25-62

REVISION 1
 Bench Mark Adjustment
 Approved: [Signature]
 Reg. C.E. 15497

- NOTES:
- PROVIDE STAKES ON THE PROPERTY LINE OR PROPERTY LINES PRODUCED AT RIGHT ANGLES TO THE SEWER LINE AT THE CENTER LINE OF EACH MANHOLE.
 - NO REPRESENTATIVE OF THE COUNTY ENGINEER WILL SURVEY OR LAY OUT ANY PORTION OF THE WORK.
 - THE OWNER OR HIS AUTHORIZED REPRESENTATIVE SHALL FURNISH THE COUNTY ENGINEER WITH GRADE SHEETS AND STATIONING FOR ALL HOUSE LATERALS AND Y BRANCHES AND SHALL PROVIDE STAKES FOR THEM AT THEIR PROPER LOCATIONS WITH STATIIONING PLAINLY MARKED. ANY CHANGE IN LOCATION SHALL BE REQUESTED IN WRITING BY THE OWNER OR HIS REPRESENTATIVE.
 - THE PRIVATE ENGINEER SHALL FURNISH THE HOUSE LATERAL DEPTH AT THE PROPERTY LINE BELOW THE TOP OF CURB ELEVATION FOR EACH HOUSE LATERAL ON THE GRADE SHEET.
 - NO REVISIONS SHALL BE MADE IN THESE PLANS WITHOUT THE APPROVAL OF THE COUNTY ENGINEER.
 - USE STANDARD MANHOLE FRAMES AND COVERS, S-117 EXCEPT AS NOTED.
 - USE EXTRA STRENGTH PIPE, ALL PIPE IS STANDARD DEPTH EXCEPT AS NOTED.
 - USE MECHANICAL COMPRESSION JOINTS FOR ALL Y.C.P. JOINTS PER SPECS. SECS. 34 & 48.
 - RESURFACE ALL TRENCH WITHIN PAVED AREA TO MEET L.A. COUNTY ROAD DEPT. OR CALIF. STATE HIGHWAY REQUIREMENTS IN ACCORDANCE WITH PERMITS.
 - ENCASE FOUR FEET OF SEWER AT POINTS OF INTERFERENCE WITH POLES, CASE III, S-172.
 - HOUSE LATERALS TO BE CONSTRUCTED WITH INFERTS AT PROPERTY LINE 6 FEET BELOW CURB GRADE EXCEPT AS NOTED.
 - ALL STRUCTURES SHALL BE BRICK SEWER STRUCTURES S-104. PRECAST CONCRETE MANHOLES PER S-105 OR S-107S MAY BE USED AS AN ALTERNATE TO STRUCTURES APPROVED BY THE COUNTY ENGINEER, EXCEPT AS NOTED.
 - FOR ALLOWABLE LEAKAGE TEST USE FORMULA NO. 1 - SPECS. SEC. 54.
 - MANHOLE TOPS IN UNIMPROVED RIGHTS-OF-WAY TO BE SIX INCHES ABOVE FINISHED GRADE.
 - THE CONTRACTOR SHALL NOTIFY THE CONSTRUCTION DIVISION BY TELEPHONE, MADISON 9-4747, EXT. 8286 AT LEAST TWENTY-FOUR HOURS BEFORE STARTING ANY WORK UNDER THIS CONTRACT.
 - STANDARD SPECIFICATIONS DATED MAY 25, 1962 SHALL APPLY IN THE CONSTRUCTION OF THIS PROJECT.

- NOTES:
- Manhole to be 48" ID Precast Conc. Standard Manhole with base poured, in place, per Orange County San. Dist. Standards and Specifications.
 - Cover to be 24" Dia. E.B. Moritz Foundry Model N° M1254 or approved equal, and to read "SEWER O.C.S.D." with 3" high letters.
 - The contractor shall notify Orange County Sanitation District by telephone, 415-7147, at least 48 hours before commencing work on Orange County Street.
 - Prior to excavating in Orange County Street, Contractor must obtain necessary permits from proper authorities.
 - The contractor is to take out excavation permit from City of Cypress prior to starting construction.

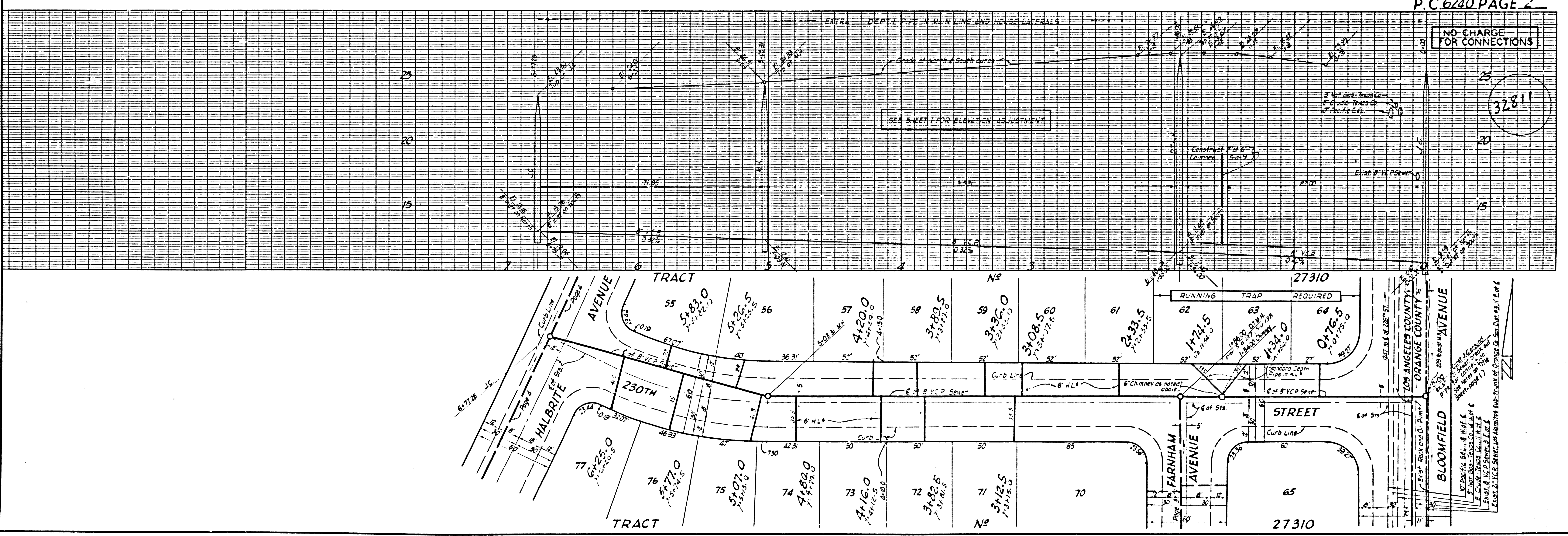
COUNTY SANITATION DISTRICT
 OF ORANGE COUNTY, CALIFORNIA
 COUNTY SAN. DIST. N° 3

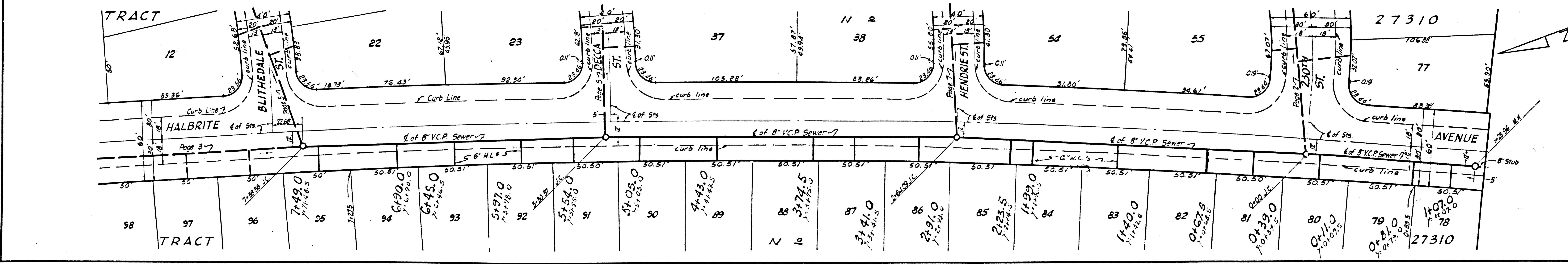
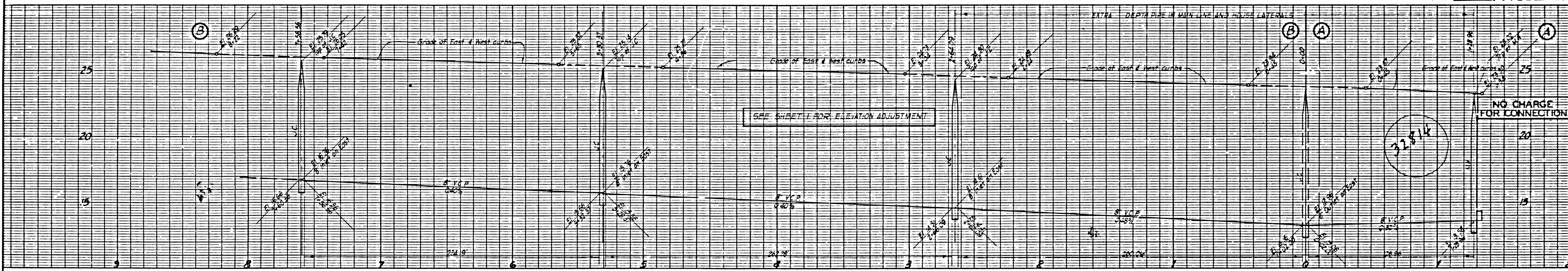
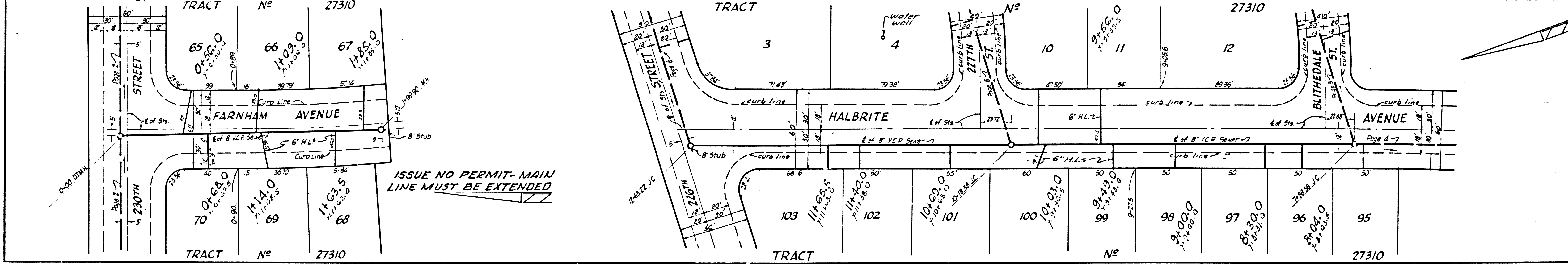
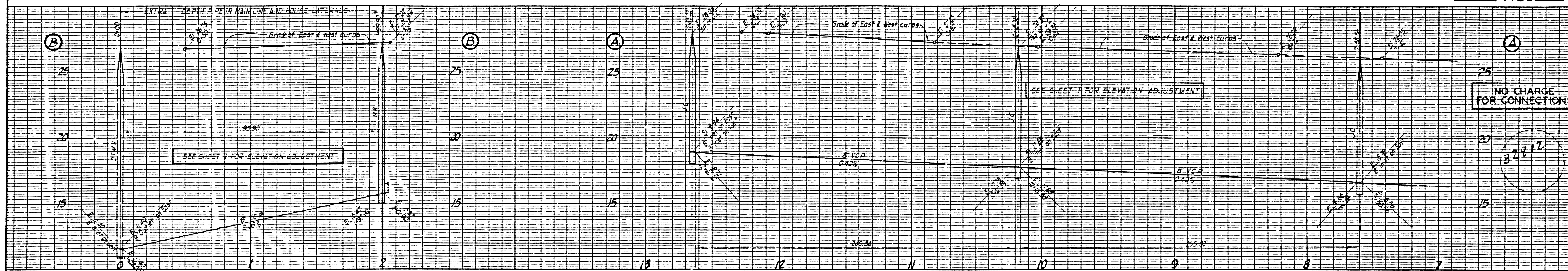
APPROVED: [Signature]
 BY: [Signature]
 C.E. 10357

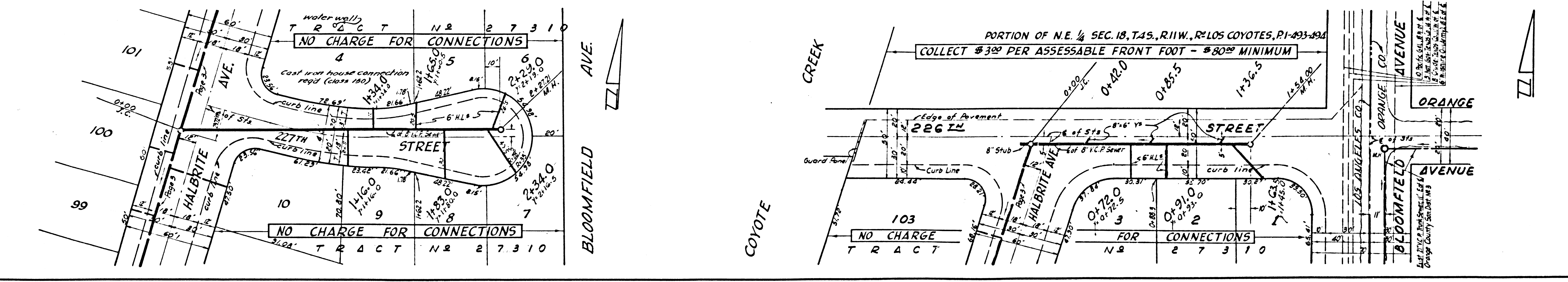
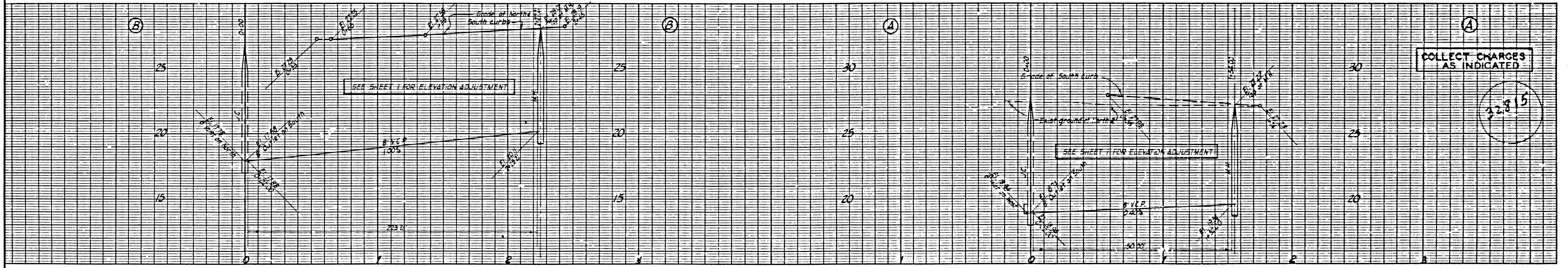
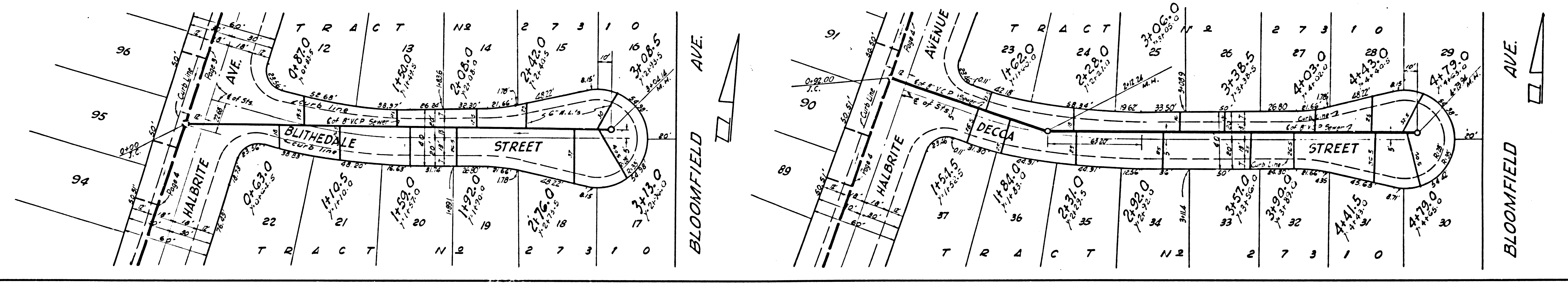
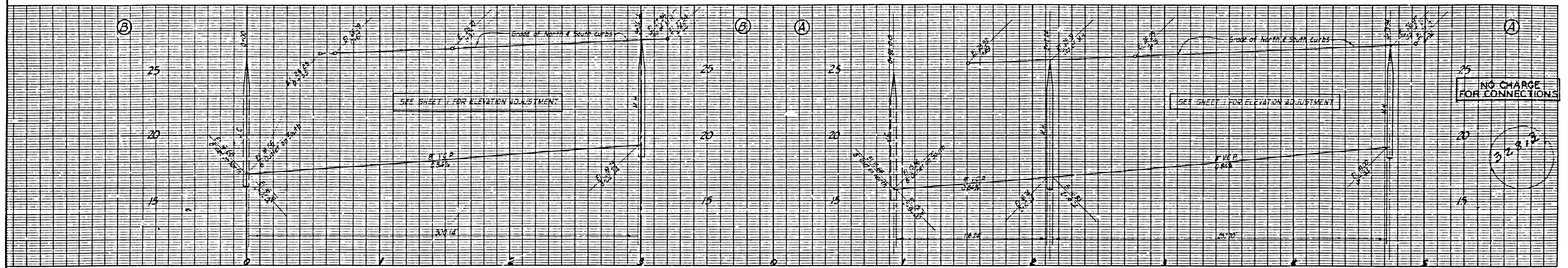
NOTE:
 GRADES TO WHICH THIS IMPROVEMENT IS TO BE CONSTRUCTED ARE SHOWN ON PLANS AND PROFILES. GRADE POINTS FOR TOP OF CURBS, CENTER LINE OF STREETS OR CENTER LINE OF ALLEYS ARE SHOWN BY CIRCLES ON PROFILES. AT ALL POINTS BETWEEN DESIGNATED POINTS THE GRADE SHALL BE ESTABLISHED SO AS TO CONFORM TO A STRAIGHT LINE DRAWN BETWEEN SAID DESIGNATED POINTS.
 ELEVATIONS ARE IN FEET ABOVE U.S.C. & G.S. SEA LEVEL DATUM OF 1929.
 THIS DRAWING AND THE DATA HEREON ARE HEREBY MADE A PART OF THE SPECIFICATIONS.
 WORK SHALL BE CONSTRUCTED ACCORDING TO SPECIFICATIONS ON FILE IN THE OFFICE OF THE COUNTY ENGINEER AND SHALL BE PROSECUTED ONLY IN THE PRESENCE OF THE COUNTY ENGINEER.
 BEFORE WORK CAN BE STARTED THE CONTRACTOR MUST OBTAIN A PERMIT TO EXCAVATE IN COUNTY STREETS FROM THE L. A. COUNTY ROAD DEPT., DISTRICT OFFICE NO. 4 AND PAY A FEE TO THE COUNTY ENGINEER, ROOM 300 COUNTY ENGINEER BLDG., 108 W. SECOND ST., SUFFICIENT TO COVER THE COST OF CONSTRUCTION INSPECTION AND RECORD PLANS.
 APPROVAL OF THIS PLAN BY THE COUNTY OF LOS ANGELES DOES NOT CONSTITUTE A REPRESENTATION AS TO THE ACCURACY OF THE LOCATION OF OR THE EXISTENCE OR NON-EXISTENCE OF ANY UNDERGROUND UTILITY PIPE OR STRUCTURE WITHIN THE LIMITS OF THIS PROJECT. THIS NOTE APPLIES TO ALL PAGES.
 IF WORK IS TO BE DONE IN A STATE HIGHWAY, A PERMIT MUST BE OBTAINED FROM THE STATE OF CALIFORNIA, DIVISION OF HIGHWAYS, 120 SOUTH SPRING STREET.

COUNTY OF LOS ANGELES, CALIFORNIA
 APPROVED, JOHN A. LAMBIE, COUNTY ENGINEER
 APPROVED, J.D. PARKHURST, CHIEF ENGINEER
 CD. SAN. DIST. NO. 18
 BY: [Signature]
 ASSISTING SANITATION ENGINEER
 CHECKED BY: [Signature]
 OFFICE OF COUNTY ENGINEER, REG. C. E. NO. 14616
 SUBMITTED BY: [Signature]
 LOS CERRITOS REGIONAL ENGINEER, REG. C.E. N° 3871

P.C. 6240 PAGE 2







NO CHARGE FOR CONNECTIONS

SEE SHEET 1 FOR ELEVATION ADJUSTMENT

37816

