

P.C. 6241
INDEX MAP
SCALE 1" = 600'
N.S. 37

NOTE: Number in circle indicates page number

BENCH MARK:
S.O. 1532
Spk. in Lead Intop of Conc. Headwall at N.E. Cor.
Rosemead Boulevard and Rush Street 3' from N.
end of Headwall, 2 1/4' N. of E. Rush Street and 1 1/2'
E. of E. of Rosemead Blvd.
Mkd. M.E. 129 Elev. 232.479'
Whittier 1955

NO CHARGE FOR CONNECTIONS
J. B. Thompson

CITY OF SOUTH EL MONTE BLDG. DIST. NO. 5.04

- NOTES:**
- PROVIDE STAKES ON THE PROPERTY LINE OR PROPERTY LINES PRODUCED AT RIGHT ANGLES TO THE SEWER LINE AT THE CENTER LINE OF EACH MANHOLE.
 - NO REPRESENTATIVE OF THE CITY ENGINEER WILL SURVEY OR LAYOUT ANY PORTION OF THE WORK.
 - THE OWNER OR HIS AUTHORIZED REPRESENTATIVE SHALL FURNISH THE CITY ENGINEER WITH GRADE SHEETS AND STATION FOR ALL HOUSE LATERALS AND T-BRANCHES AND SHALL PROVIDE STAKES FOR THEM AT THEIR PROPER LOCATIONS WITH STATIONING AND PLAIN MARKS. ANY CHANGE IN LOCATION SHALL BE INDICATED IN WRITING BY THE OWNER OR HIS REPRESENTATIVE. NO REVISIONS SHALL BE MADE IN THESE PLANS WITHOUT THE APPROVAL OF THE CITY ENGINEER.
 - USE STANDARD MANHOLE FRAMES AND COVERS, S.A. 117, EXCEPT AS NOTED.
 - USE EXTRA STRENGTH PIPE, ALL PIPE IS STANDARD DEPTH.
 - USE CEMENT ANCHORAGE REINFORCED JOINTS FOR ALL V.C.P. JOINTS IN MAINLINES PER SPEC. SECS. 20 & 44.
 - RESURFACE ALL TRENCH WITHIN PAVED AREA TO MEET L. A. COUNTY ROAD DEPT. OR CALIF. STATE HIGHWAY DEPT. REQUIREMENTS IN ACCORDANCE WITH PERMITS.
 - ENCASE FOUR FEET OF SEWER AT POINTS OF INTERFERENCE WITH POLES, S.A. 119.
 - HOUSE LATERALS TO BE CONSTRUCTED WITH INVERTS AT BASEMENT LINE, 6 FEET BELOW GRADE EXCEPT AS NOTED.
 - MANHOLES SHALL BE BRICK SEWER STRUCTURES PER S-2-244, PRECAST CONCRETE MANHOLES PER S-2-175 OR S-2-173 MAY BE USED, PER ALTERNATE IN LOCATIONS APPROVED BY THE COUNTY ENGINEER.
 - FOR ALLOWABLE LEAKAGE TEST USE FORMULA NO. 100, SPEC. SEC. 31.
 - MANHOLE TOPS IN UNPAVED AREAS OR WAY TO BE BURIED WITH FINISHED GRADE.
 - THE PRIVATE ENGINEER SHALL PROVIDE THE HOUSE LATERAL DEPTH AT THE BASEMENT LINE BELOW THE GRADE ELEVATION FOR EACH HOUSE LATERAL ON THE GRADE SHEET.
 - THE CONTRACTOR SHALL NOTIFY THE CONSTRUCTION DIVISION BY TELEPHONE, MADISON 9-4747, EXT. 81881, AT LEAST THIRTY-FOUR HOURS BEFORE STARTING ANY WORK UNDER THIS CONTRACT.
 - USE MECHANICAL COMPRESSION JOINTS FOR ALL V.C.P. HOUSE LATERALS PER SPEC. SEC. 20.
 - SPECIFICATIONS DATED MAY 15, 1962, APPLY IN THE CONSTRUCTION OF THIS PROJECT.
- WORDS IN CIRCLES AT ENDS OF HOUSE LATERALS INDICATE 1/4" SHALL BE LAID HORIZONTAL AND HOUSE LATERALS SHALL BE CONSTRUCTED WITH 1/4" RISE PER FOOT TO BASEMENT LINE.
- ALL HOUSE LATERALS SHALL BE CONSTRUCTED IN A STRAIGHT ALIGNMENT AT RIGHT ANGLES FROM THE MAIN LINE SEWER EXCEPT AS SHOWN ON THE PLAN.

ALL STATE AND LOCAL TRENCH SAFETY ORDERS WILL BE RIGIDLY ENFORCED.

NO CONNECTIONS FOR THE DISPOSAL OF INDUSTRIAL WASTES SHALL BE MADE TO SEWERS SHOWN ON THESE DRAWINGS WITHOUT WRITTEN PERMISSION FROM THE CHIEF ENGINEER AND GENERAL MANAGER OF THE COUNTY SANITATION DISTRICTS.

APPROVED: *J. B. Thompson*
INDUSTRIAL WASTE DIVISION DATE: 7-11-62

PROFILE ALIGNMENT AND GRADE OF **P.C. 6241**
SANITARY SEWERS PAGE 1

TO BE CONSTRUCTED IN
**SANITARY SEWER RIGHT OF WAY
EAST OF ROSEMEAD BOULEVARD**

PRIVATE CONTRACT NO. 6241

W.S. 37
1 SHEET, 2 PAGES
SCALE: HORIZ. 1" = 40' VERT. 1" = 4' MAY 1962

PREPARED BY THE OFFICES OF
STRECKER ASSOCIATES INC.

John A. Allford
P.E. C.E. NO. 2633
FOR LEGEND SEE PLAN NO. S-A-64

NOTE:
GRADES TO WHICH THIS IMPROVEMENT IS TO BE CONSTRUCTED ARE SHOWN ON PLANS AND PROFILES. GRADE POINTS FOR TOP OF CURB, CENTER LINE OF STREETS, OR CENTER LINE OF ALLEYS ARE SHOWN BY CIRCLES ON PROFILES AT ALL POINTS BETWEEN DESIGNATED POINTS THE GRADE SHALL BE ESTABLISHED SO AS TO COMFORM TO A STRAIGHT LINE BEARING BETWEEN SAID DESIGNATED POINTS AS IN PERMITS ABOVE U.S.C. FOR S.A. LEVEL DATA IN 1962.

THIS DRAWING AND THE DATA HEREON ARE HEREBY MADE A PART OF THE SPECIFICATIONS. WORK SHALL BE CONSTRUCTED ACCORDING TO SPECIFICATIONS ON FILE IN THE OFFICE OF THE CITY ENGINEER AND SHALL BE PROSECUTED ONLY IN THE PRESENCE OF THE CITY ENGINEER.

BEFORE WORK CAN BE STARTED, THE CONTRACTOR MUST OBTAIN A PERMIT TO EXCAVATE IN CITY STREETS FROM THE L.A. CO. ROAD DEPT., DISTRICT OFFICE 1001, AND MAKE A DEPOSIT WITH THE CITY OF SOUTH EL MONTE, 9800 BROADWAY, 25 CENTS PER LINEAL FOOT TO COVER THE COST OF CONSTRUCTION INSPECTION AND RECORD PLANS.

APPROVAL OF THIS PLAN BY THE CITY OF SOUTH EL MONTE DOES NOT CONSTITUTE A REPRESENTATION AS TO THE ACCURACY OF THE LOCATION OF OR THE EXISTENCE OR NON-EXISTENCE OF ANY UNDERGROUND UTILITY PIPE, OR STRUCTURE WITHIN THE LIMITS OF THIS PROJECT. THE CONTRACTOR SHALL BE RESPONSIBLE FOR THE LOCATION OF ALL UTILITIES WITHIN THE PROJECT AREA.

IF WORK IS TO BE DONE IN A STATE HIGHWAY, A PERMIT MUST BE OBTAINED FROM THE STATE OF CALIFORNIA, DIVISION OF HIGHWAYS, 160 SOUTH FINE STREET.

CITY OF SOUTH EL MONTE CALIFORNIA

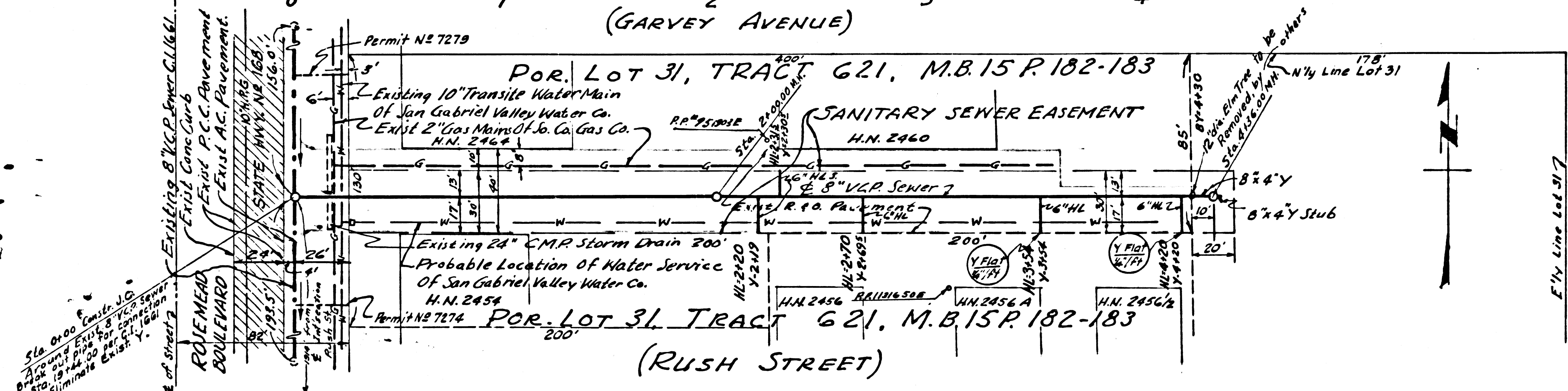
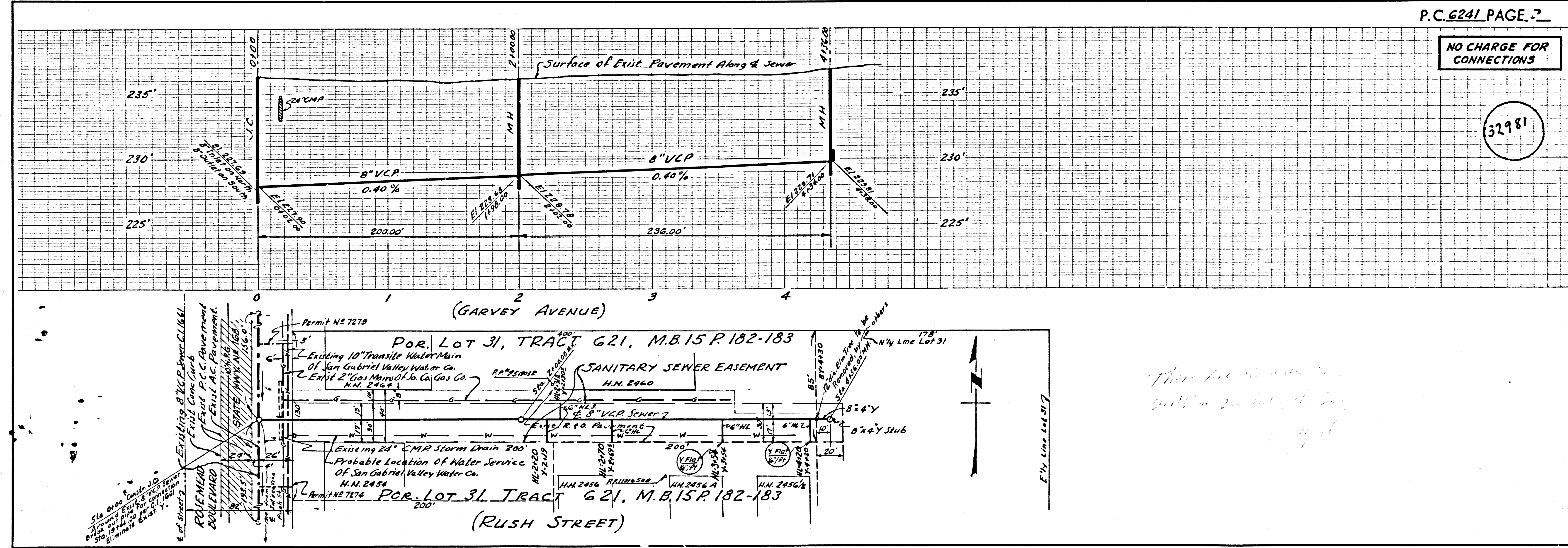
APPROVED, JOHN A. LAMBE, CITY ENGINEER
APPROVED, J. B. THOMPSON, CHIEF ENGINEER
CO. SAN. DIST. NO. 15
BY: *Richard E. Kline* ASST. SANITATION ENGINEER
CHECKED BY: *John Under* 11-9-62
OFFICE OF CITY ENGINEER, B.S. C. & NO. 2495
SUBMITTED: *N. F. Brannan*
SAN GABRIEL VALLEY REGIONAL ENGINEER

32980

P.C. 6241 PAGE 2

NO CHARGE FOR CONNECTIONS

32981



*There is no...
with...*