

SAN DIMAS BLDG. DIST. NO. 10

SANITARY SEWERS PAGE 1

TO BE CONSTRUCTED IN KENOMA STREET SEWER OUTFALL FOR TRACT NO. 26898

PRIVATE CONTRACT NO. 6244

W.S. 48

2 SHEETS; 3 PAGES

SCALE: VERT. 1"=8' JULY, 1962

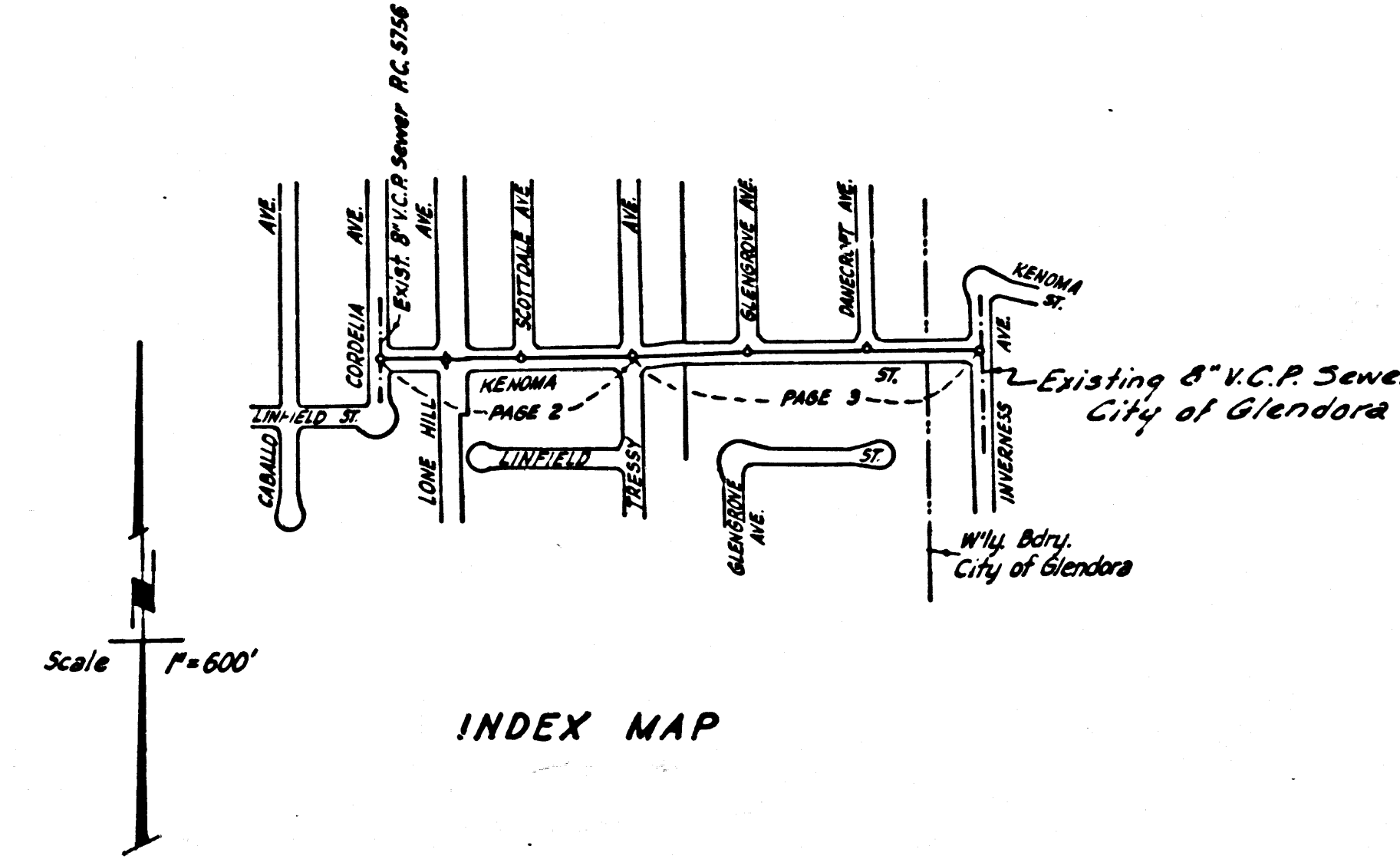
HORIZ. 1"=40'

PREPARED IN THE OFFICES OF WALSH-FORKERT CIVIL ENGINEERS, INC.

REG. C. E. NO. 8371

FOR LEGEND SEE PLAN NO. S-A-64

BENCH MARK #40-3 Amelia Ave. & Foothill Blvd on approx. E Amelia Ave. 70.6 ft. south of E of Foothill Blvd (Alasta Ave to W) in a well protected by a C.I. cover Mkd "Co. Sur. Mon." a std. C.S. Mon. stamped Co. Sur. B.M. 40-3 (1954) R.E. 63 F.B. 1361-9. 1954 adjusted. Elev. 953.341



- NOTES: 1. PROVIDE STAKES ON THE PROPERTY LINE OF PROPERTY LINES PRODUCED AT RIGHT ANGLES TO THE SEWER LINE AT THE CENTER LINE OF EACH MANHOLE. 2. NO REPRESENTATIVE OF THE COUNTY ENGINEER WILL SURVEY OR LAY OUT ANY PORTION OF THE WORK. 3. THE OWNER OR HIS AUTHORIZED REPRESENTATIVE SHALL FURNISH THE COUNTY ENGINEER WITH GRADE SHEETS AND STATIONING FOR ALL HOUSE LATERALS AND Y BRANCHES AND SHALL PROVIDE STAKES FOR THEM AT THEIR PROPER LOCATIONS WITH STATIONING PLAINLY MARKED. ANY CHANGE IN LOCATION SHALL BE REQUESTED IN WRITING BY THE OWNER OR HIS REPRESENTATIVE. 4. NO REVISIONS SHALL BE MADE IN THESE PLANS WITHOUT THE APPROVAL OF THE COUNTY ENGINEER. 5. USE STANDARD MANHOLE FRAMES AND COVERS, S-117, EXCEPT AS NOTED. 6. USE EXTRA STRENGTH PIPE, ALL PIPE IS STANDARD DEPTH EXCEPT AS NOTED. 7. USE MECHANICAL COMPRESSION JOINTS FOR ALL V.C.P. JOINTS PER SPEC'S, SECS. 34 & 40. 8. RESURFACE ALL TRENCH WITHIN PAVED AREA TO MEET L.A. COUNTY ROAD DEPT. OR CALIF. STATE HIGHWAY REQUIREMENTS IN ACCORDANCE WITH PERMITS. 9. ENCASE FOUR FEET OF SEWER AT POINTS OF INTERFERENCE WITH POLES, CASE III, S-172. 10. ALL STRUCTURES SHALL BE BRICK SEWER STRUCTURES, S-104, PRECAST CONCRETE MANHOLES PER S-105 OR S-107 MAY BE USED AS AN ALTERNATE IN LOCATIONS APPROVED BY THE COUNTY ENGINEER. 11. FOR ALLOWABLE LEAKAGE TEST USE FORMULA NO. 1000, SPEC'S, SEC. 54. 12. THE CONTRACTOR SHALL NOTIFY THE CONSTRUCTION DIVISION BY TELEPHONE, MADISON 9-4741, AT LEAST TWENTY-FOUR HOURS BEFORE STARTING ANY WORK UNDER THIS CONTRACT. 13. IT SHALL BE THE RESPONSIBILITY OF THE CONTRACTOR TO LOCATE ALL UTILITIES OF EVERY NATURE WHETHER SHOWN HEREON OR NOT AND PROTECT THEM FROM DAMAGE. THE CONTRACTOR SHALL BEAR THE TOTAL EXPENSE OF REPAIRS OR REPLACEMENT OF SAID UTILITIES DAMAGED BY OPERATIONS IN CONNECTION WITH THE PRODUCTION OF THE WORK. 14. STANDARD SPECIFICATIONS DATED MAY 25, 1962 APPLY IN THE CONSTRUCTION OF THIS PROJECT. 15. NO CONNECTIONS FOR THE DISPOSAL OF INDUSTRIAL WASTES SHALL BE MADE TO SEWERS SHOWN ON THESE DRAWINGS WITHOUT WRITTEN PERMISSION FROM THE CHIEF ENGINEER AND GENERAL MANAGER OF THE COUNTY SANITATION DISTRICTS.

NOTE: GRADES TO WHICH THIS IMPROVEMENT IS TO BE CONSTRUCTED ARE SHOWN ON PLANS AND PROFILES. GRADE POINTS FOR TOP OF CURBS, CENTER LINE OF STREETS, OR CENTER LINE OF ALLEYS ARE SHOWN BY CIRCLES ON PROFILES. AT ALL POINTS BETWEEN DESIGNATED POINTS THE GRADE SHALL BE ESTABLISHED SO AS TO CONFORM TO A STRAIGHT LINE DRAWN BETWEEN SAID DESIGNATED POINTS. ELEVATIONS ARE IN FEET ABOVE U.S.C. & G.S. SEA LEVEL DATUM OF 1929. THIS DRAWING AND THE DATA HEREON ARE HEREBY MADE A PART OF THE SPECIFICATIONS. WORK SHALL BE CONSTRUCTED ACCORDING TO SPECIFICATIONS ON FILE IN THE OFFICE OF THE COUNTY ENGINEER AND SHALL BE PROSECUTED ONLY IN THE PRESENCE OF THE COUNTY ENGINEER. BEFORE WORK CAN BE STARTED THE CONTRACTOR MUST OBTAIN A PERMIT TO EXCAVATE IN COUNTY STREETS FROM THE L.A. COUNTY ROAD DEPT., DISTRICT OFFICE NO. 1 AND PAY A FEE TO THE COUNTY ENGINEER ROOM 310 CO. ENGINEERS BLDG., 108 N. 2ND STREET, L.A. 12 SUFFICIENT TO COVER THE COST OF CONSTRUCTION INSPECTION AND RECORD PLANS. APPROVAL OF THIS PLAN BY THE COUNTY OF LOS ANGELES DOES NOT CONSTITUTE A REPRESENTATION AS TO THE ACCURACY OF THE LOCATION OF OR THE EXISTENCE OR NON-EXISTENCE OF ANY UNDERGROUND UTILITY PIPE, OR STRUCTURE WITHIN THE LIMITS OF THIS PROJECT. THIS NOTE APPLIES TO ALL PAGES. IF WORK IS TO BE DONE IN A STATE HIGHWAY, A PERMIT MUST BE OBTAINED FROM THE STATE OF CALIFORNIA, DIVISION OF HIGHWAYS, 120 SOUTH SPRING STREET.

APPROVED, CITY OF GLENDORA

BY [Signature] CITY ENGINEER 7/12/62

COLLECT CHARGES AS INDICATED [Signature]

APPROVED, JOHN A. LAMBIE, COUNTY ENGINEER

BY [Signature] SANITATION ENGINEER

CHECKED BY [Signature] OFFICE ENGINEER

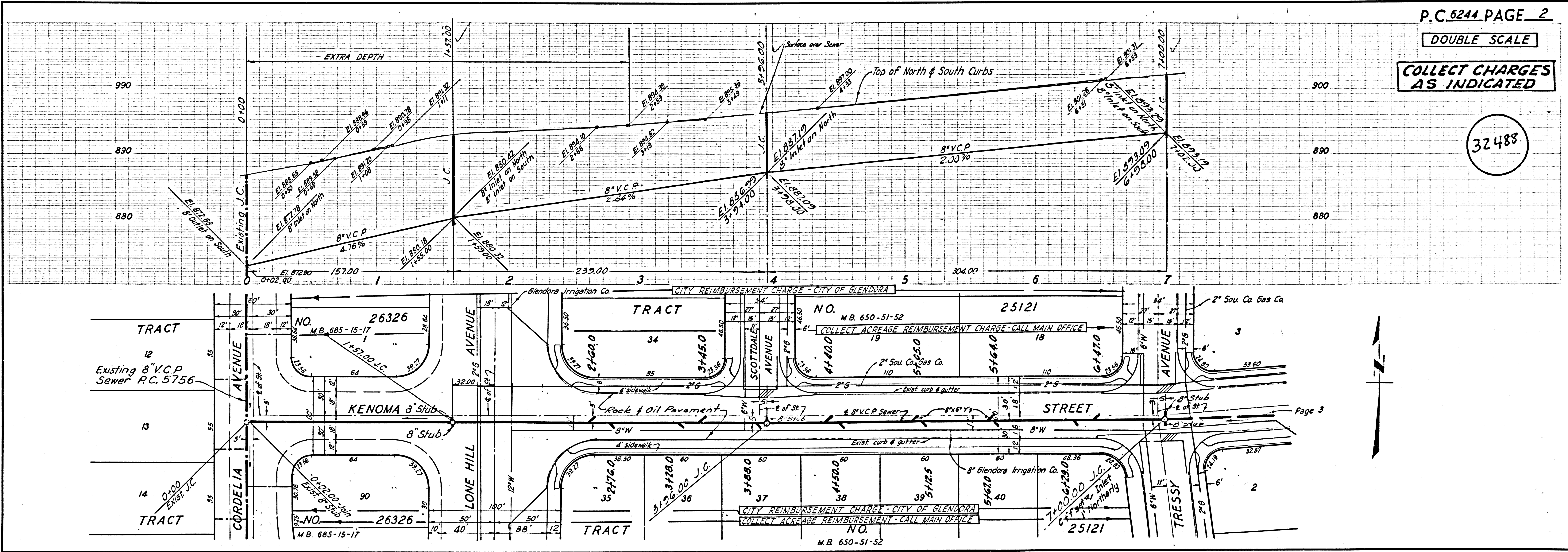
SUBMITTED W.C. Reinhardt 7-12-62 SAN DIMAS REGIONAL ENGINEER

P.C. 6244

DOUBLE SCALE

COLLECT CHARGES AS INDICATED

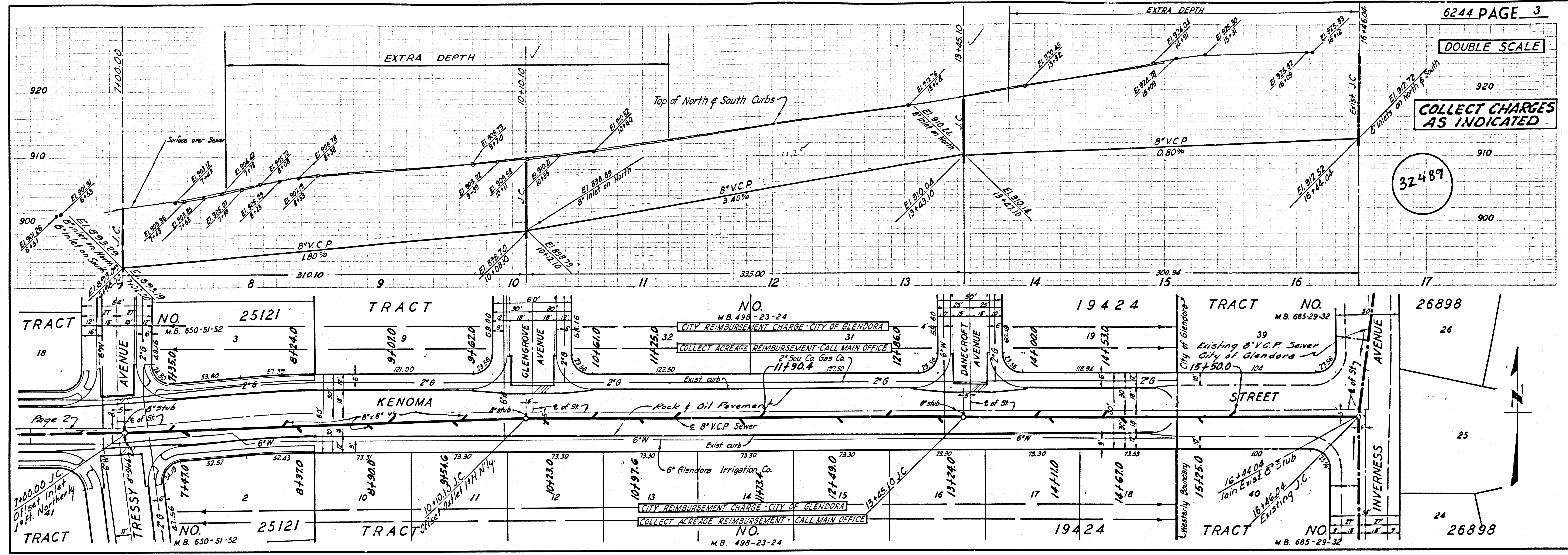
32488



DOUBLE SCALE

COLLECT CHARGES AS INDICATED

32489



32490

b.c. 0544