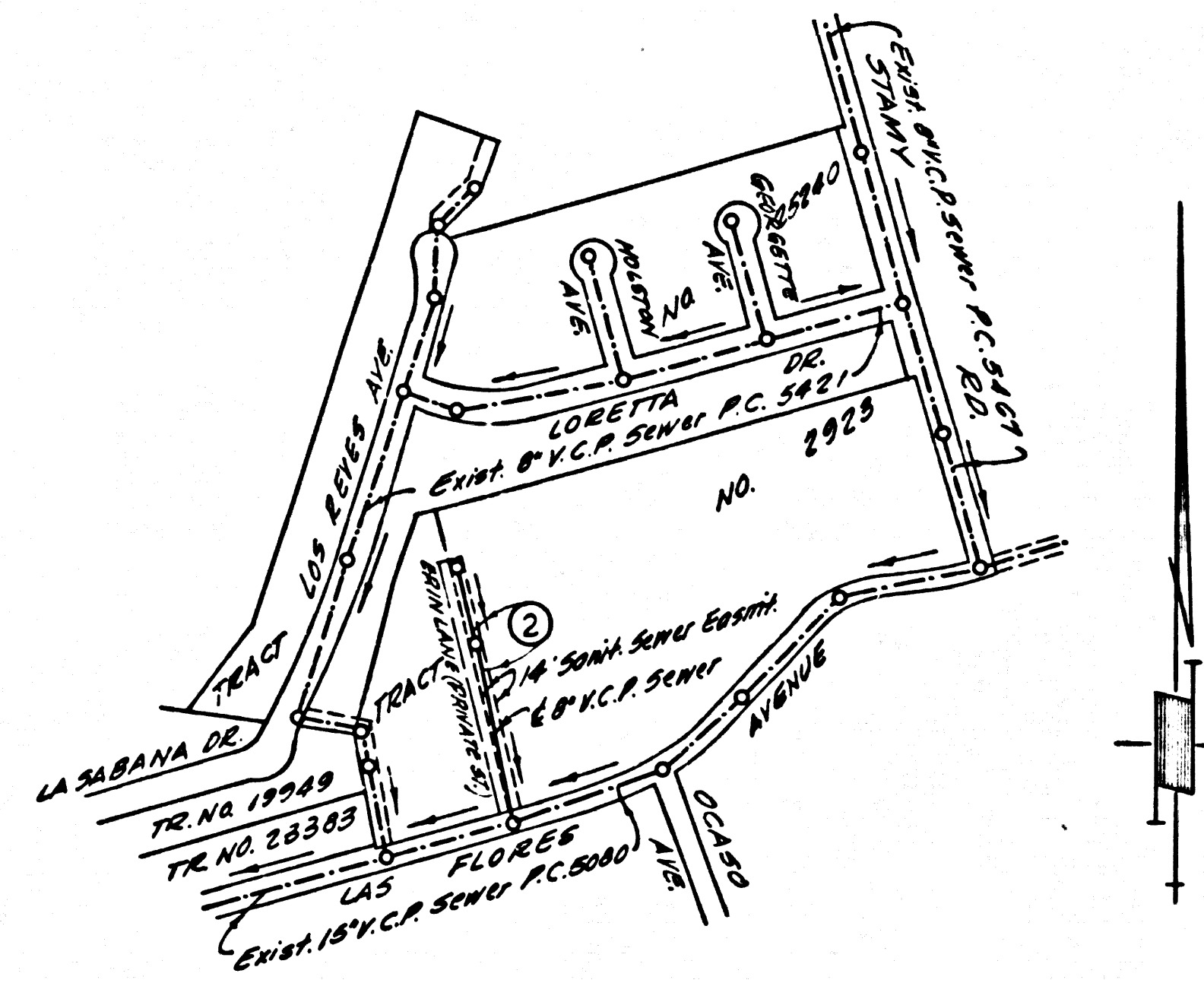


DOUBLE SCALE
LA MIRADA BLDG. DIST. NO. 4.08

PROFILE ALIGNMENT AND GRADE OF P.C. 6246
SANITARY SEWERS PAGE 1
TO BE CONSTRUCTED IN
(ERIN LANE)
SANITARY SEWER R/W
PRIVATE CONTRACT NO. 6246



INDEX MAP
Scale: 1"=400' P.C. 6246

- NOTES:
1. PROVIDE STAKES ON THE PROPERTY LINE OR PROPERTY LINES PRODUCED AT RIGHT ANGLES TO THE SEWER LINE AT THE CENTER LINE OF EACH MANHOLE.
 2. NO REPRESENTATIVE OF THE CITY ENGINEER WILL SURVEY OR LAY OUT ANY PORTION OF THE WORK.
 3. THE OWNER OR HIS AUTHORIZED REPRESENTATIVE SHALL FURNISH THE CITY ENGINEER WITH GRADE SHEETS AND STATIONING FOR ALL HOUSE LATERALS AND Y BRANCHES AND SHALL PROVIDE STAKES FOR THEM AT THEIR PROPER LOCATIONS WITH STATIONING PLAINLY MARKED. ANY CHANGE IN LOCATION SHALL BE REQUESTED IN WRITING BY THE OWNER OR HIS REPRESENTATIVE.
 4. THE PRIVATE ENGINEER SHALL FURNISH THE HOUSE LATERAL DEPTH AT THE PROPERTY LINE BELOW THE GRADE OF E OF EASEMENT.
 5. ELEVATIONS FOR EACH HOUSE LATERAL ON THE GRADE SHEET.
 6. NO REVISIONS SHALL BE MADE IN THESE PLANS WITHOUT THE APPROVAL OF THE CITY ENGINEER.
 7. USE STANDARD MANHOLE FRAMES AND COVERS, S-117.
 8. USE EXTERIOR STRENGTH PIPE ALL PIPE IS STANDARD DEPTH EXCEPT AS NOTED.
 9. USE MECHANICAL COMPRESSION Joints FOR ALL V.C.P. JOINTS PER SPEC'S, SECL. 34 & 48, 49.
 10. RESURFACE ALL TRENCH WITHIN PAVED AREA TO MEET L.A. COUNTY ROAD DEPT. OR CALIF. STATE HIGHWAY REQUIREMENTS IN ACCORDANCE WITH PERMITS.
 11. ENCASE FOUR FEET OF SEWER AT POINTS OF INTERFERENCE WITH POLES, CASE III, S-117.
 12. HOUSE LATERALS TO BE CONSTRUCTED WITH INVERTS AT PROPERTY LINE 2 FEET BELOW GRADE OF E OF EASEMENT.
 13. ALL STRUCTURES SHALL BE BRICK SEWER STRUCTURES, S-104.
 14. FOR ALLOWABLE LEAKAGE TEST USE FORMULA NO. 1 SPEC'S, SEC. 34.
 15. MANHOLE TOPS IN UNIMPROVED RIGHTS-OF-WAY TO BE SIX INCHES ABOVE FINISHED GRADE.
 16. THE CONTRACTOR SHALL NOTIFY THE CONSTRUCTION DIVISION BY TELEPHONE, MADISON 8-4747, EXT. 201, AT LEAST TWENTY-FOUR HOURS BEFORE STARTING ANY WORK UNDER THIS CONTRACT.
 17. STANDARD SPECIFICATIONS DATED MAY 25, 1952, ON FILE IN THE CITY HALL, APPLY IN THE CONSTRUCTION OF THIS PROJECT.

W.S. 34
1 SHEET OF 2 PAGES
SCALE: VERT. 1"=8'
HORIZ. 1"=40'
JUNE, 1962
PREPARED IN THE OFFICES OF
HANS C. THOMSEN

32407

FOR LEGEND SEE PLAN NO. S-A-64

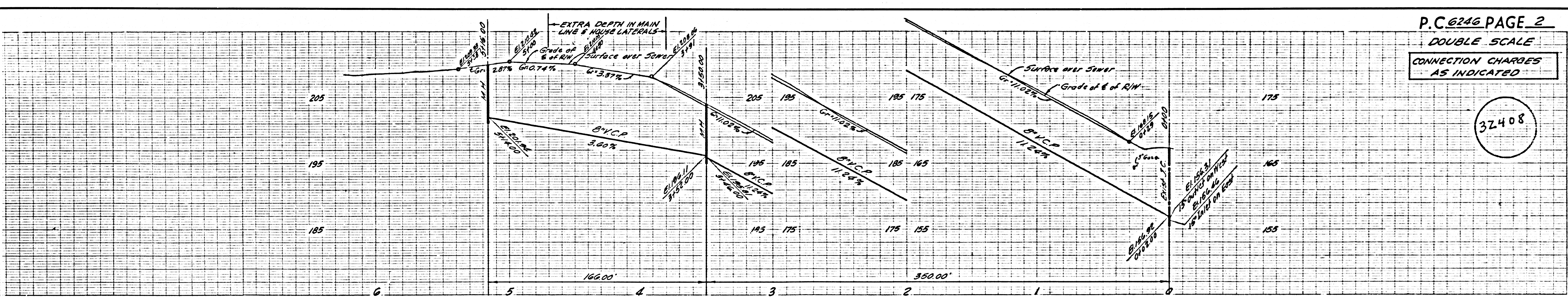
NOTE:
GRADES TO WHICH THIS IMPROVEMENT IS TO BE CONSTRUCTED ARE SHOWN ON PLANS AND PROFILES. GRADE POINTS FOR TOP OF CURBS, CENTER LINE OF STREETS OR CENTER LINE OF ALLEYS ARE SHOWN BY CIRCLES ON PROFILES AT ALL POINTS BETWEEN DESIGNATED POINTS. THE GRADE SHALL BE ESTABLISHED SO AS TO CONFORM TO A STRAIGHT LINE DRAWN BETWEEN SAID DESIGNATED POINTS.
ELEVATIONS ARE IN FEET ABOVE U.S.C. & G.S. SEA LEVEL DATUM OF 1929.
THIS DRAWING AND THE DATA HEREON ARE HEREBY MADE A PART OF THE SPECIFICATIONS.
WORK SHALL BE CONSTRUCTED ACCORDING TO SPECIFICATIONS ON FILE IN THE OFFICE OF THE CITY ENGINEER AND SHALL BE PROSECUTED ONLY IN THE PRESENCE OF THE CITY ENGINEER.
BEFORE WORK CAN BE STARTED, THE CONTRACTOR MUST OBTAIN A PERMIT TO EXCAVATE IN CITY STREETS FROM THE L.A. COUNTY ROAD DEPT. DISTRICT OFFICE # 15 & MAKE A DEPOSIT WITH THE CITY OF LA MIRADA, 12006 WINTHROP, LA MIRADA, SUFFICIENT TO COVER THE COST OF CONSTRUCTION INSPECTION AND RECORD PLANS.
APPROVAL OF THIS PLAN BY THE CITY OF LA MIRADA DOES NOT CONSTITUTE A REPRESENTATION AS TO THE ACCURACY OF THE LOCATION OR OF THE EXISTENCE OR NON-EXISTENCE OF ANY UNDERGROUND UTILITY PIPE, OR STRUCTURE WITHIN THE LIMITS OF THIS PROJECT. THIS NOTE APPLIES TO ALL PAGES.
IF WORK IS TO BE DONE IN A STATE HIGHWAY, A PERMIT MUST BE OBTAINED FROM THE STATE OF CALIFORNIA, DIVISION OF HIGHWAYS, 120 SOUTH SPRING STREET.

CONNECTION CHARGES
AS INDICATED
D. M. Hopkins 8-16-62

B.M. 5Y 1138 C.S. Mon.
near int. Imperial Hwy. & Ocaso
Ave. 23' S. & 2' E. int. Ocaso Ave.
& Imperial Hwy. La Mirada Quad
1955 - Elevation 227.237.

NO CONNECTIONS FOR THE DISPOSAL OF INDUSTRIAL WASTES SHALL BE MADE TO SEWERS SHOWN ON THESE DRAWINGS WITHOUT WRITTEN PERMISSION FROM THE CHIEF ENGINEER AND GENERAL MANAGER OF THE COUNTY SANITATION DISTRICTS.

CITY OF LA MIRADA, CALIFORNIA
APPROVED, JOHN A. LAMBE, CITY ENGINEER
APPROVED, J. D. ALVARADO, CHIEF ENGINEER
CO. SAN. DIST. NO. 10
BY Richard E. Larson ASST. SANITATION ENGINEER
BY Hans C. Thomsen OFFICE ENGINEER
CHECKED BY Henry Lee 8-17-62
OFFICE OF CITY ENGINEER, REG. C. E. NO. 10443
SUBMITTED BY Robert L. Egan 8-16-62
LOS CERRITOS REGIONAL ENGINEER REG. C. E. NO. 3871



P.C. 6246 PAGE 2
DOUBLE SCALE
CONNECTION CHARGES
AS INDICATED

32408

