

CITY OF COMMERCE BLDG. DIST. NO. 6.01

PROFILE ALIGNMENT AND GRADE OF P.C. 6250

SANITARY SEWERS PAGE 1

TO BE CONSTRUCTED FOR

UNION ICE COMPANY  
(PRIVATE SEWER)

PRIVATE CONTRACT NO. 6250

W.S. 368-4

1 SHEET; 2 PAGES

SCALE: VERT. 1" = 4' MAY 1962

HORIZ. 1" = 40'

PREPARED IN THE OFFICES OF

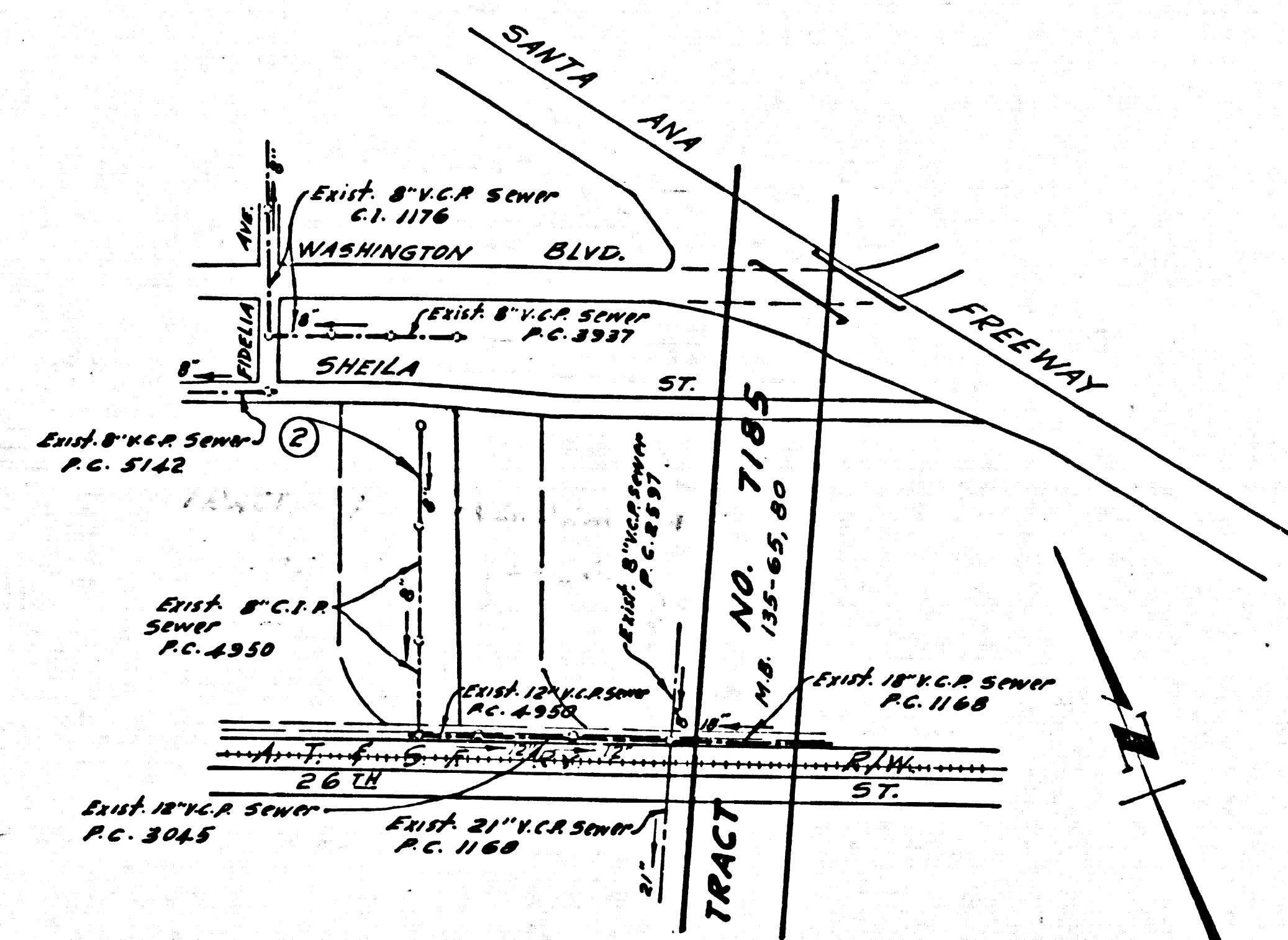
KEMMERER ENGR. CO. INC.

By Robert P. Flores

REG. C. E. NO. 11249

FOR LEGEND SEE PLAN NO. S-A-64

32419



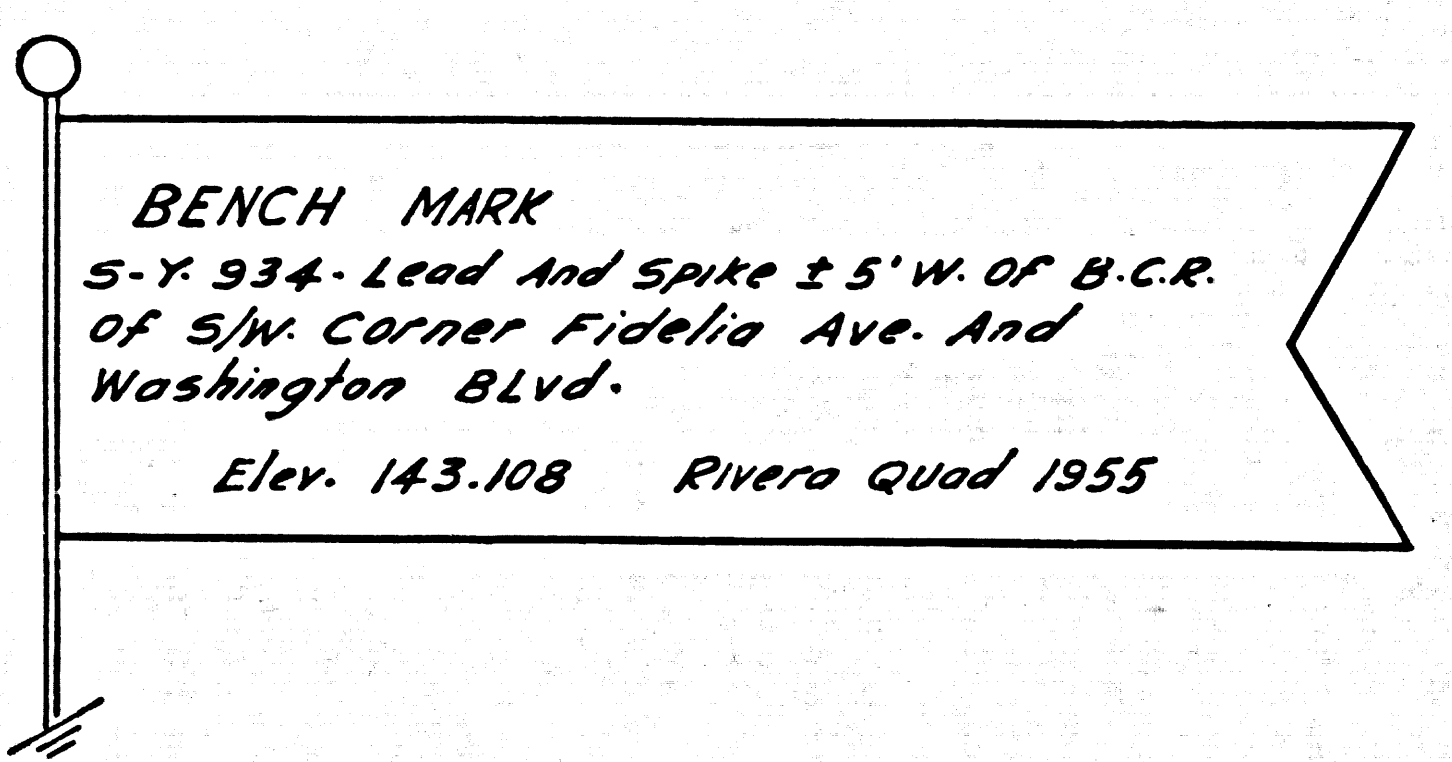
NOTE: NUMBER IN CIRCLE INDICATES PAGE NUMBER

INDEX MAP  
SCALE: 1" = 500'  
P.C. 6250

NOTE: THE EXISTENCE AND APPROXIMATE LOCATION OF UNDERGROUND UTILITIES OR STRUCTURES SHOWN ON THESE PLANS WERE DETERMINED BY A SEARCH OF THE AVAILABLE PUBLIC RECORDS TO THE BEST OF OUR KNOWLEDGE THERE ARE NO EXISTING UNDERGROUND UTILITIES OR STRUCTURES EXCEPT AS SHOWN ON THIS MAP. THE CONTRACTOR IS REQUIRED TO TAKE DUE PRECAUTIONARY MEASURES TO PROTECT THE UTILITIES OR STRUCTURES SHOWN AND ANY OTHER UTILITIES OR STRUCTURES AT THE SITE. IT SHALL BE THE CONTRACTOR'S RESPONSIBILITY TO NOTIFY THE OWNERS OF THE UTILITIES OR STRUCTURES CONCERNED BEFORE STARTING WORK.

NOTES:

1. PROVIDE STAKES ON THE PROPERTY LINE OR PROPERTY LINES PRODUCED AT RIGHT ANGLES TO THE SEWER LINE AT THE CENTER LINE OF EACH MANHOLE.
2. NO REPRESENTATIVE OF THE CITY ENGINEER WILL SURVEY OR LAY OUT ANY PORTION OF THE WORK.
3. THE OWNER OR HIS AUTHORIZED REPRESENTATIVE SHALL FURNISH THE CITY ENGINEER WITH GRADE SHEETS AND STATIONING FOR ALL HOUSE LATERALS AND Y BRANCHES AND SHALL PROVIDE STAKES FOR THEM AT THEIR PROPER LOCATIONS WITH STATIONING PLAINLY MARKED. ANY CHANGE IN LOCATION SHALL BE REQUESTED IN WRITING BY THE OWNER OR HIS REPRESENTATIVE.
4. THE PRIVATE ENGINEER SHALL FURNISH THE HOUSE LATERAL DEPTH AT THE PROPERTY LINE BELOW FINISHED SURFACE ELEVATION FOR EACH HOUSE LATERAL ON THE GRADE SHEET.
5. NO REVISIONS SHALL BE MADE IN THESE PLANS WITHOUT THE APPROVAL OF THE CITY ENGINEER.
6. USE STANDARD MANHOLE FRAMES AND COVERS, 5'-0" I.D. COVER TO READ "SEWER".
7. USE "CAST IRON PIPE CLASS 150"
8. USE CAST IRON MANHOLES OR MANHOLE COVERS PER SPEC'S. SEC. 38 FOR ALL HOUSE LATERALS AND Y BRANCHES AND PER SPEC'S. SEC. 38 FOR ALL HOUSE LATERALS AND Y BRANCHES AND PER SPEC'S. SEC. 38 FOR ALL HOUSE LATERALS AND Y BRANCHES AND PER SPEC'S. SEC. 38 FOR ALL HOUSE LATERALS AND Y BRANCHES.
9. USE LEAD JOINTS PER SPEC'S. SEC. 38 FOR ALL HOUSE LATERALS AND Y BRANCHES AND PER SPEC'S. SEC. 38 FOR ALL HOUSE LATERALS AND Y BRANCHES AND PER SPEC'S. SEC. 38 FOR ALL HOUSE LATERALS AND Y BRANCHES.
10. ENCASE FOUR FEET OF NUMBER AT POINTS OF INTERFERENCE WITH POLES, CABLES IN SHELTER.
11. HOUSE LATERALS TO BE CONSTRUCTED WITH TYPICAL AT PROPERTY LINE. 12" BELOW CURB GRADE EXCEPT AS NOTED.
12. ALL STRUCTURES SHALL BE BRICK FORM STRUCTURES 5'-0" I.D. 12" DIA.
13. FOR ALLOWABLE LEAKAGE TEST USE FORMULA NO. 1 SPEC'S. SEC. 34.
14. MANHOLE TOPS TO BE LEVEL WITH FINISHED GRADE.
15. THE CONTRACTOR SHALL NOTIFY THE CONSTRUCTION DIVISION BY TELEPHONE, MADISON 9-4747, AT LEAST TWENTY-FOUR HOURS BEFORE STARTING ANY WORK UNDER THIS CONTRACT.
16. STANDARD SPECIFICATIONS DATED MAY 25, 1962 APPLY IN THE CONSTRUCTION OF THIS PROJECT.
17. USE CAST IRON FITTINGS PER SPEC'S, SEC. 40.



APPROVED  
INDUSTRIAL WASTE DIVISION

BY E. H. Thompson DATE 6-29-62

NO CHARGE FOR CONNECTIONS  
A. S. Albertson 6/29/62

CONNECTIONS FOR THE DISPOSAL OF INDUSTRIAL WASTES SHALL BE MADE TO SEWERS SHOWN ON THESE DRAWINGS WITHOUT WRITTEN PERMISSION FROM THE CHIEF ENGINEER AND GENERAL MANAGER OF THE COUNTY SANITATION DISTRICT.

NOTE: GRADES TO WHICH THIS IMPROVEMENT IS TO BE CONSTRUCTED ARE SHOWN ON PLANS AND PROFILES. GRADE POINTS FOR TOP OF CURBS, CENTER LINE OF STREETS, OR CENTER LINE OF ALLEYS ARE SHOWN BY CIRCLES ON PROFILES. AT ALL POINTS BETWEEN DESIGNATED POINTS THE GRADE SHALL BE ESTABLISHED SO AS TO CONFORM TO A STRAIGHT LINE DRAWN BETWEEN SAID DESIGNATED POINTS. ELEVATIONS ARE IN FEET ABOVE U.S.C. & G.S. SEA LEVEL DATUM OF 1929. THIS DRAWING AND THE DATA HEREON ARE HEREBY MADE A PART OF THE SPECIFICATIONS. WORK SHALL BE CONSTRUCTED ACCORDING TO SPECIFICATIONS ON FILE IN THE OFFICE OF THE CITY ENGINEER AND SHALL BE PROSECUTED ONLY IN THE PRESENCE OF THE CITY ENGINEER. BEFORE WORK CAN BE STARTED, THE CONTRACTOR MUST MAKE A DEPOSIT WITH THE CITY OF COMMERCE \$222.22 ATLANTIC BOULEVARD I.A. 22 SUFFICIENT TO COVER THE COST OF CONSTRUCTION INSPECTION AND RECORD PLANS. APPROVAL OF THIS PLAN BY THE CITY OF COMMERCE DOES NOT CONSTITUTE A REPRESENTATION AS TO THE ACCURACY OF THE LOCATION OF OR THE EXISTENCE OR NON-EXISTENCE OF ANY UNDERGROUND UTILITY PIPE, OR STRUCTURE WITHIN THE LIMITS OF THIS PROJECT. THIS NOTE APPLIES TO ALL PAGES. IF WORK IS TO BE DONE IN A STATE HIGHWAY, A PERMIT MUST BE OBTAINED FROM THE STATE OF CALIFORNIA, DIVISION OF HIGHWAYS, 120 SOUTH SPRING STREET.

CITY OF COMMERCE, CALIFORNIA

APPROVED, JOHN A. LAMBIE, CITY ENGINEER APPROVED, J. D. MARKHAM, CHIEF ENGINEER

BY Robert P. Flores BY J. D. Markham

ASS'T. SANITATION ENGINEER OFFICE ENGINEER

CHECKED BY G. K. Davis 7-9-62

OFFICE OF CITY ENGINEER, REG. C. E. NO. 3054

SUBMITTED

N. P. Bravender

SAN GABRIEL VALLEY REGIONAL ENGINEER

32420

P.C. 6250 PAGE 2

NO CHARGE FOR CONNECTIONS

