

B.M. S.G. 1635 ELEV. 534.905

L.A. Co. Plat. 104 near W.ly. edge of air conc. station 1041.2 above grade level on N.ly. corner of Edison St. and Mesal St. 160 N.ly. and S.ly. intersection.

Offerlein QUAD. 1955

DOUBLE SCALE LA PUENTE BLDG. DIST. NO. 2

PROFILE ALIGNMENT AND GRADE OF
SANITARY SEWERS PAGE 1

TRACT N° 26889
PRIVATE CONTRACT NO. 6251

W.S. 38

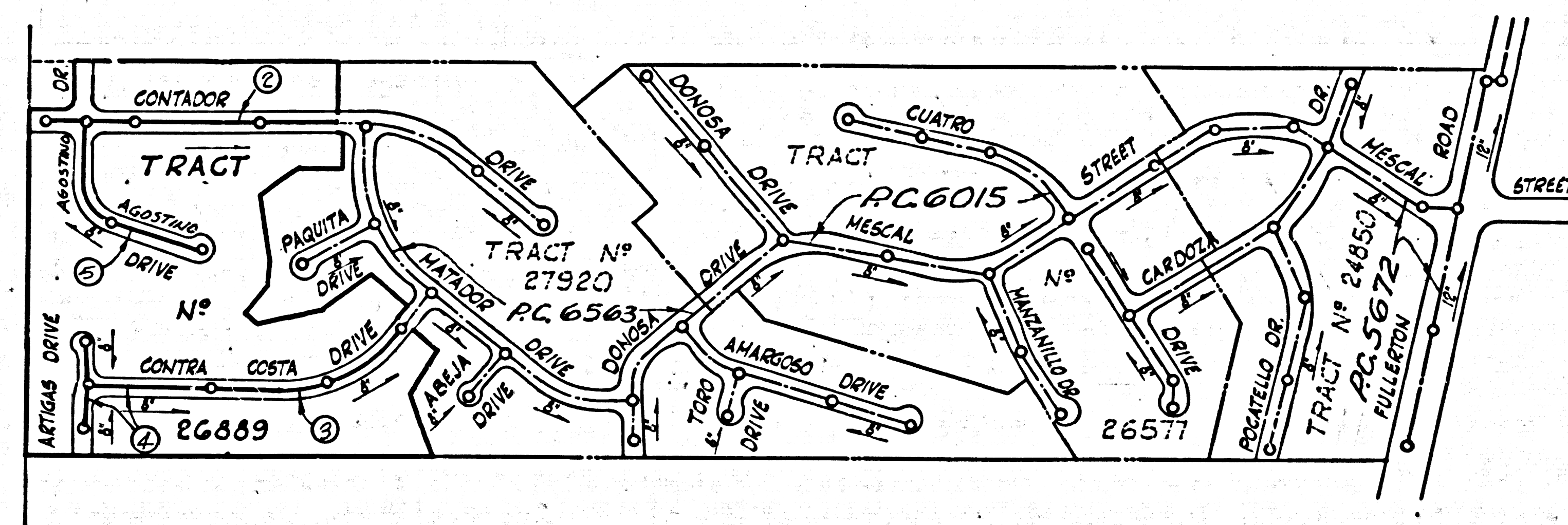
3 SHEETS, 5 PAGES
SCALE: VERT. 1"=4'
HORIZ. 1"=40'

SEPTEMBER, 1963
PREPARED IN THE OFFICES OF
JOHN M. TOUPS

By *Donald K. VanBogart*
REG. C. E. NO. 10563

FOR LEGEND SEE PLAN NO. S-64

NOTE:
GRADES TO WHICH THIS IMPROVEMENT IS TO BE CONSTRUCTED ARE SHOWN ON PLANS AND PROFILE. GRADE POINTS FOR TOP OF CURBS, CENTER LINE OF STREETS, OR CENTER LINE OF ALLEYS ARE SHOWN BY CIRCLES ON PROFILES. AT ALL POINTS BETWEEN DESIGNATED POINTS THE GRADE SHALL BE ESTABLISHED SO AS TO CONFORM TO A STRAIGHT LINE DRAWN BETWEEN SAID DESIGNATED POINTS. ELEVATIONS ARE IN FEET ABOVE U.S.C. & G.S. MEAN LEVEL DATUM OF 1929.
THIS DRAWING AND THE DATA HEREON ARE HEREBY MADE A PART OF THE SPECIFICATIONS.
BEFORE WORK CAN BE STARTED, THE CONTRACTOR MUST OBTAIN A PERMIT TO EXCAVATE IN COUNTY STREETS FROM THE L.A. COUNTY ROAD DEPT., DISTRICT OFFICE NO. 1, 115 S. WASHINGTON ST., LOS ANGELES, CALIF. AND PAY A FEE TO THE COUNTY ENGINEER, ROOM 300, COUNTY ENGINEERING BUILDING, 100 WEST SECOND STREET OR
CONSTRUCTION INSPECTION AND RECORD PLANS.
APPROVAL OF THIS PLAN BY THE COUNTY OF LOS ANGELES DOES NOT CONSTITUTE A REPRESENTATION AS TO THE ACCURACY OF THE LOCATION OF THE EXISTENCE OR NON-EXISTENCE OF ANY UNDERGROUND UTILITY PIPE OR STRUCTURE WITHIN THE LIMITS OF THIS PROJECT. THIS NOTE APPLIES TO ALL PAGES.
IF WORK IS TO BE DONE IN A STATE HIGHWAY, A PERMIT MUST BE OBTAINED FROM THE STATE OF CALIFORNIA, DIVISION OF HIGHWAYS, 120 SOUTH SPRING STREET, LOS ANGELES, CALIFORNIA.



INDEX MAP
SCALE: 1"=400'
TRACT N° 26889
PC 6251

REVISION:
Revised Road Grades and Sewer Grades on Page 5.
Changed Culverts Dr. to Openings Dr. on P. 5
Approved:
Office of County Engineer
Built Under Date 6-26-64
R.C.E. 11636 C

- 1. PROVIDE STAKES ON THE PROPERTY LINE OR PROPERTY LINES PRODUCED AT RIGHT ANGLES TO THE SEWER LINE AT THE CENTER LINE OF EACH MANHOLE.
- 2. NO REPRESENTATIVE OF THE COUNTY ENGINEER WILL SURVEY OR LAY OUT ANY PORTION OF THE WORK.
- 3. THE PRIVATE ENGINEER SHALL FURNISH THE COUNTY ENGINEER WITH GRADE SHEETS AND STATIONING FOR ALL HOUSE LATERALS AND Y BRANCHES AND SHALL PROVIDE STAKES FOR THEM AT THEIR PROPER LOCATIONS WITH STATIONING PLAINLY MARKED. ALL HOUSE LATERALS SHALL BE CONSTRUCTED IN A STRAIGHT ALIGNMENT AT RIGHT ANGLES FROM THE MAIN LINE SEWER EXCEPT AS SHOWN ON THE PLANS. HOUSE LATERALS FROM CHIMNEYS SHALL NOT HAVE AN ANGLE OF LESS THAN 45° WITH THE MAIN LINE SEWER. ANY CHANGE IN ALIGNMENT SHALL BE REQUESTED IN WRITING BY THE PRIVATE ENGINEER.
- 4. THE PRIVATE ENGINEER SHALL FURNISH THE HOUSE LATERAL DEPTH AT THE PROPERTY LINE BELOW THE TOP OF CURB ELEVATION FOR EACH HOUSE LATERAL ON THE GRADE SHEET.
- 5. NO REVISIONS SHALL BE MADE IN THESE PLANS WITHOUT THE APPROVAL OF THE COUNTY ENGINEER.
- 6. THE CONTRACTOR SHALL NOTIFY THE CONSTRUCTION DIVISION BY TELEPHONE, MADISON 9-4747, EXT. 81551, AT LEAST TWENTY-FOUR HOURS BEFORE STARTING ANY WORK UNDER THIS CONTRACT.
- 7. MANHOLES SHALL BE BRICK SEWER STRUCTURES PER S-104. PRECAST CONCRETE MANHOLES PER S-115 OR S-173 MAY BE USED AS AN ALTERNATE IN LOCATIONS APPROVED BY THE COUNTY ENGINEER.
- 8. USE STANDARD MANHOLE FRAMES AND COVERS, S-117, 1'.
- 9. MANHOLE TOPS IN UNIMPROVED RIGHTS-OF-WAY TO BE SIX INCHES ABOVE FINISHED GRADE.
- 10. USE EXTRA STRENGTH PIPE. ALL PIPE IS STANDARD DEPTH EXCEPT AS NOTED.
- 11. USE MECHANICAL COMPRESSION JOINTS FOR ALL V.C.P. JOINTS PER SPECS., SECS. 34, 48 & 49.
- 12. MINIMUM 18" BENCH MARKS IN CONSTRUCTION OF THE SEWERS, THE V.C.P. JOINTS SHALL BE OF JOINT CONNECTIONS PER SPECS., SECS. 34, 48 & 49.
- 13. IF A POWER POLE IS WITHIN THREE FEET OF THE SEWER, THE SEWER SHALL BE ENCASED, PER S-172, CASE III, TWO FEET ON EITHER SIDE FROM THE POINT OF INTERFERENCE.
- 14. DURING THE COURSE OF CONSTRUCTION IT IS DETERMINED THAT THERE IS LESS THAN FOUR FEET OF COVER OVER THE TOP OF A MAIN LINE OR HOUSE LATERAL V.C.P. SEWER WHICH IS NOT INDICATED ON THE PLANS, THE PIPE SHALL BE ENCASED PER S-172, CASE III, UNLESS OTHERWISE APPROVED BY THE COUNTY ENGINEER.
- 15. HOUSE LATERALS TO BE CONSTRUCTED WITH INVERTS AT PROPERTY LINE... FEET BELOW CURB GRADE EXCEPT AS NOTED.
- 16. RESURFACE ALL TRENCHES WITHIN PAVED AREAS TO MEET L.A. COUNTY ROAD DEPT. OR CALIFORNIA STATE HIGHWAY REQUIREMENTS IN ACCORDANCE WITH PERMITS.
- 17. FOR ALLOWABLE LEAKAGE TESTS USE FORMULA NO. 1, SPECS., SEC. 54.
- 18. ALL STATE AND LOCAL TRENCH SAFETY ORDERS WILL BE RIGIDLY ENFORCED.
- 19. SEWERS IN FILLED GROUND CONSTRUCTION WILL NOT BE PERMITTED IN FILLED AREAS UNLESS ACCEPTABLE CERTIFICATION IS SUBMITTED TO THE CHIEF DIVISION OF THE COUNTY ENGINEERING DEPT. THAT RELATIVE CONSTRUCTION IS GREATER THAN 80%. IF CONSTRUCTION IS LESS THAN 80% THE SEWERS SHALL BE GRADED PER S-104 OR HAVE A SPECIAL BASE COURSE PER S-104 TO CASE III SPECIAL MANHOLE BARS MUST BE INSTALLED PER S-104 ITS AS INDICATED ON PLANS. IF CONSTRUCTION IS GREATER THAN 80% GRADING AND SPECIAL M.H. BARS ARE NOT REQUIRED.

NO CONNECTIONS FOR THE DISPOSAL OF INDUSTRIAL WASTES SHALL BE MADE TO SEWERS SHOWN ON THESE DRAWINGS WITHOUT WRITTEN PERMISSION FROM THE CHIEF ENGINEER AND GENERAL MANAGER OF THE COUNTY SANITATION DISTRICTS.

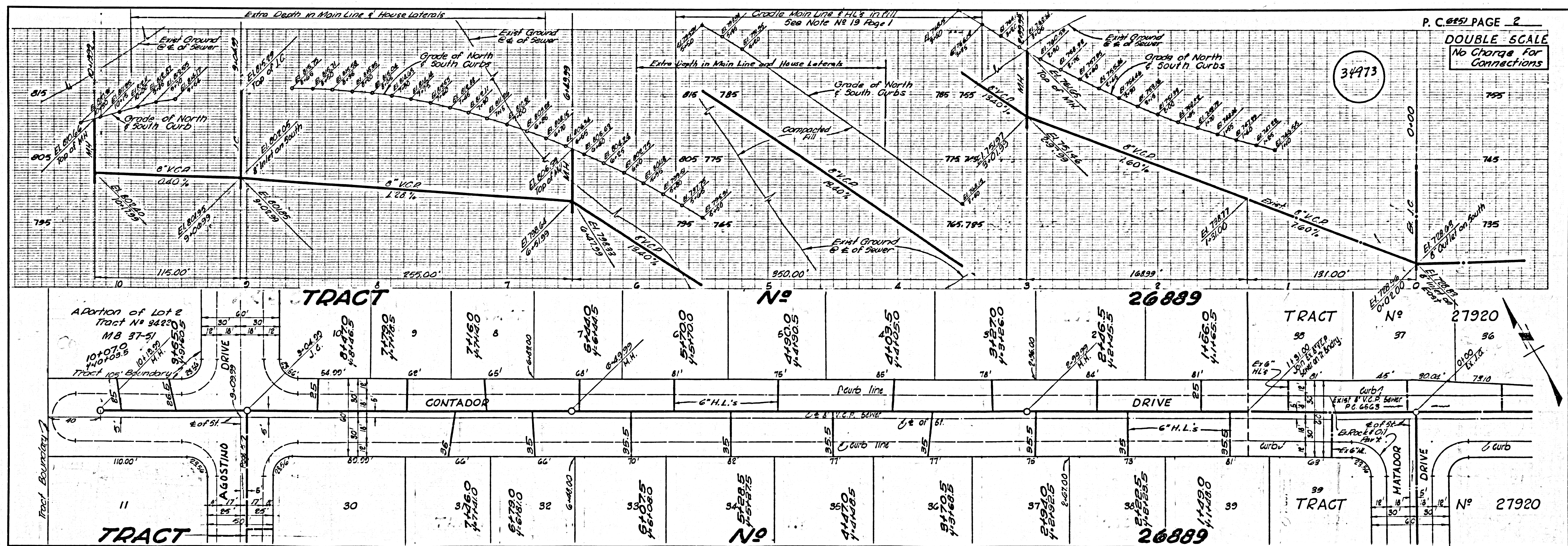
COLLECT CHARGES AS INDICATED
Kenneth S. Anderson

ISSUE NO PERMITS UNTIL R.C. 6563 IS ACCEPTED

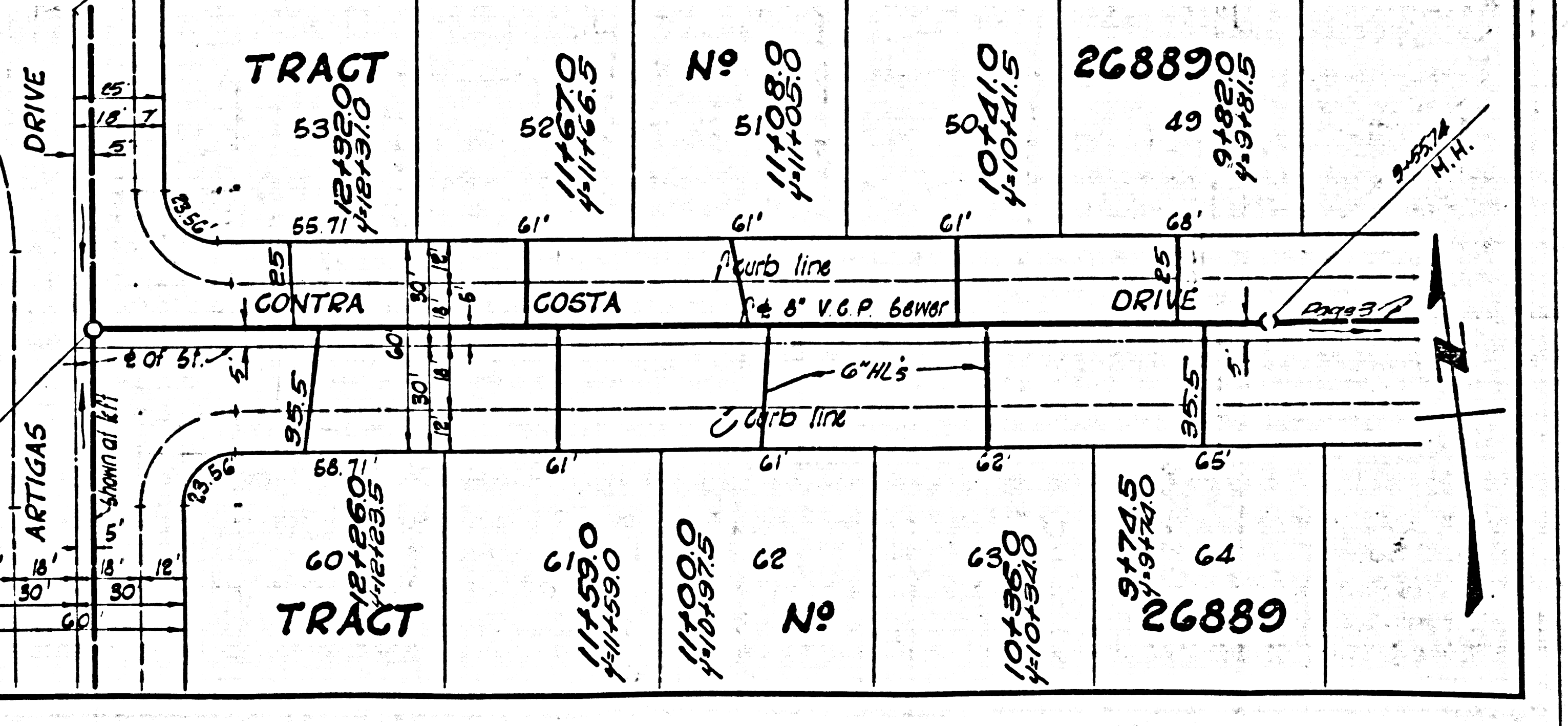
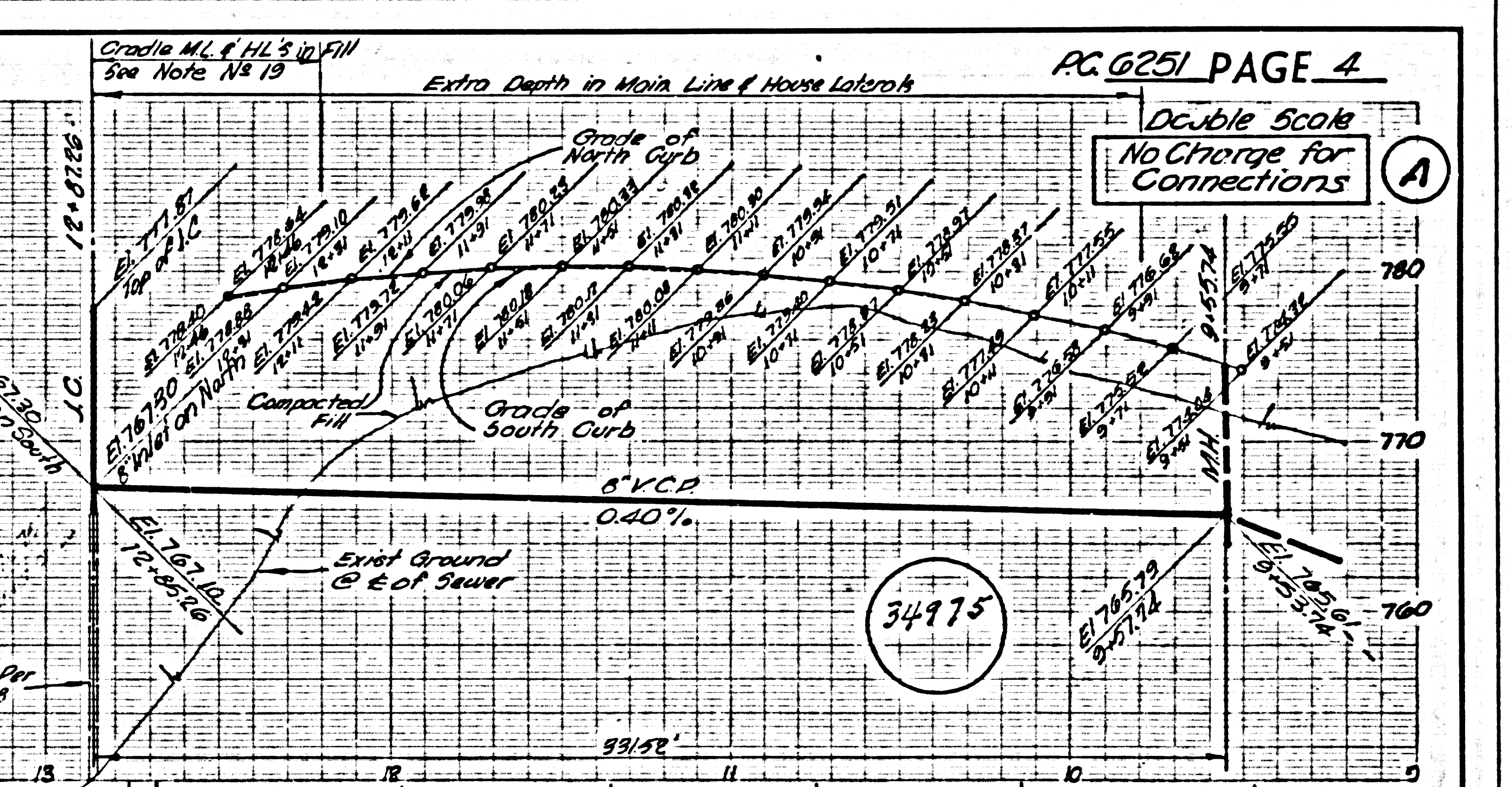
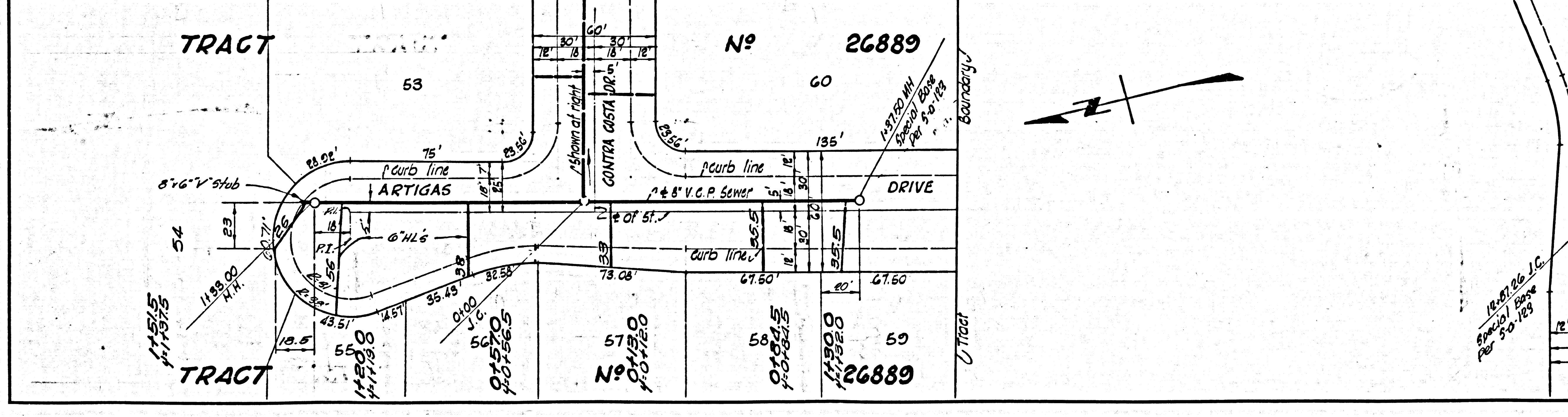
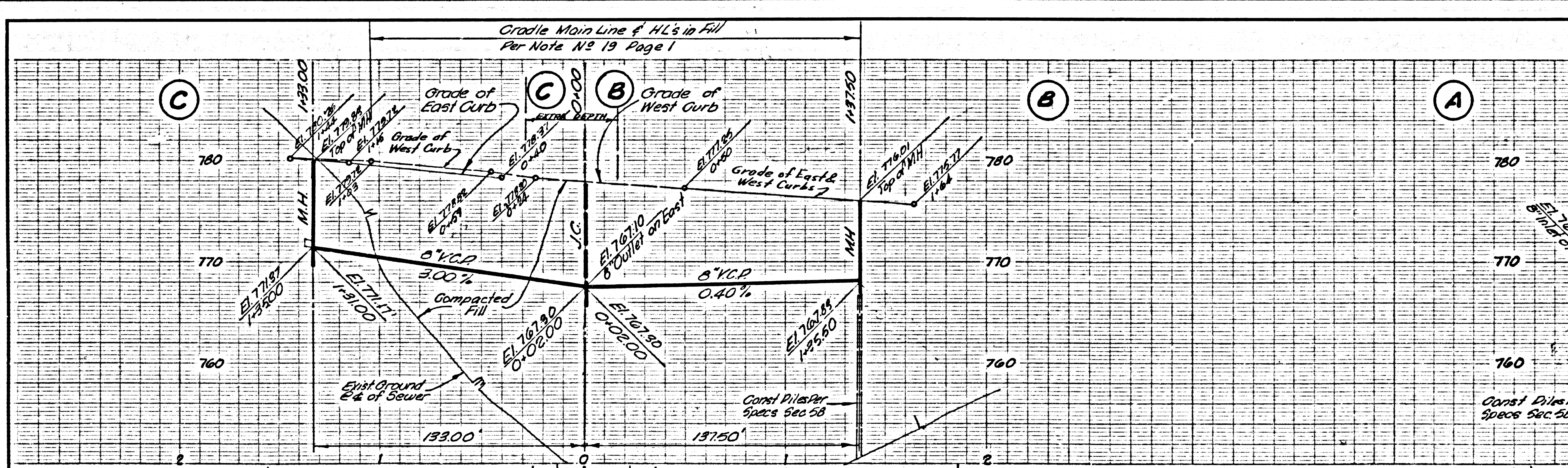
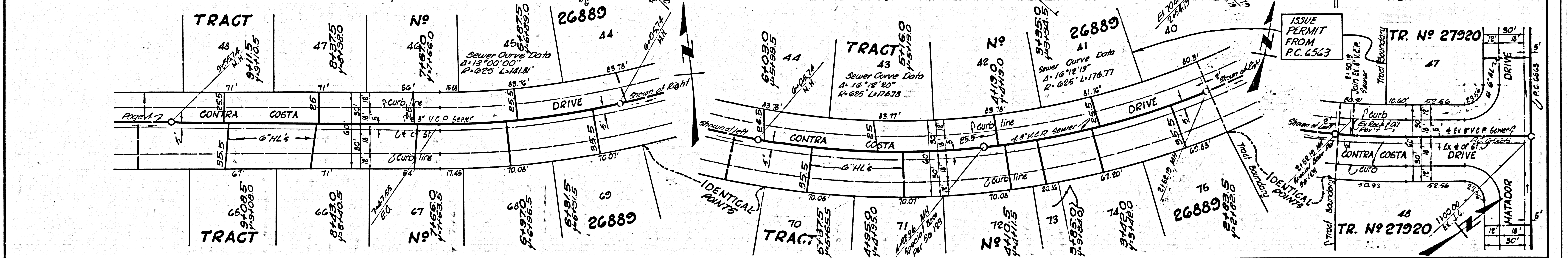
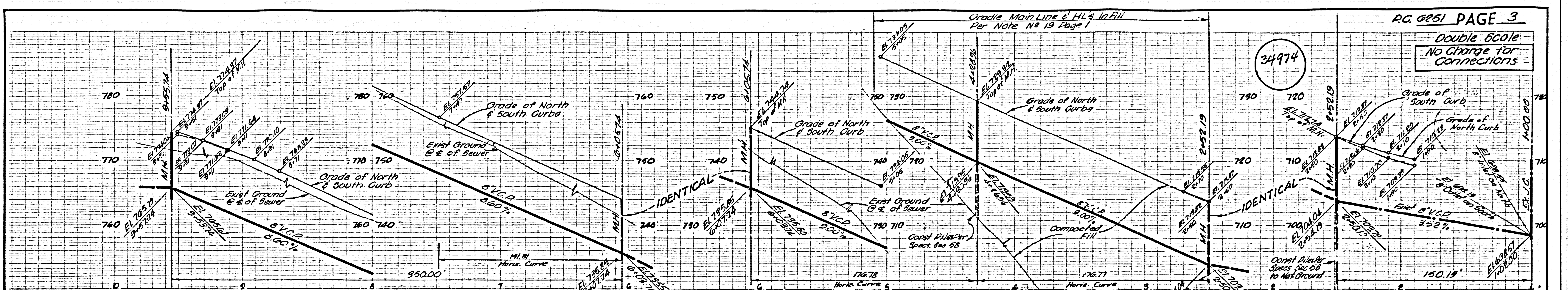
COUNTY OF LOS ANGELES, CALIFORNIA
JOHN A. LAMBIE, COUNTY ENGINEER
APPROVED BY *James K...* ASSISTANT SANITATION ENGINEER
SUBMITTED BY *Edwin W. Kangel* SAN CHIEF REGIONAL ENGINEER
CHECKED BY *J.K. Underhill* REG. C.E. NO. 11543

J. D. PARKHURST, CHIEF ENGINEER
CO. SAN. DIST. NO. 2
APPROVED BY *S. J. ...* OFFICE ENGINEER

J. N. 0358.38



P.C. 6251 PAGE 2
DOUBLE SCALE
No Charge For Connections



Double Scale
No Charge for
Connections

34976

