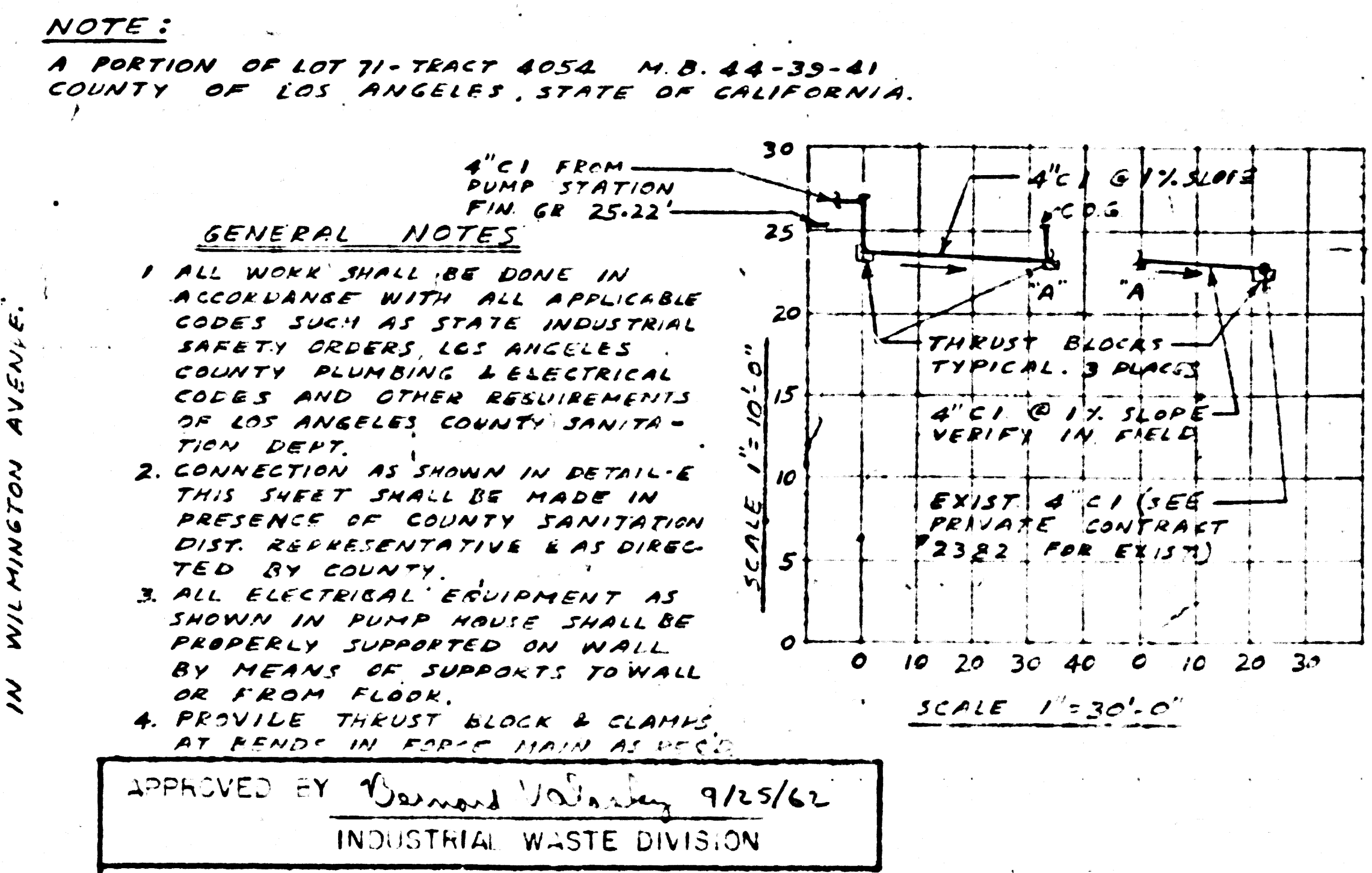
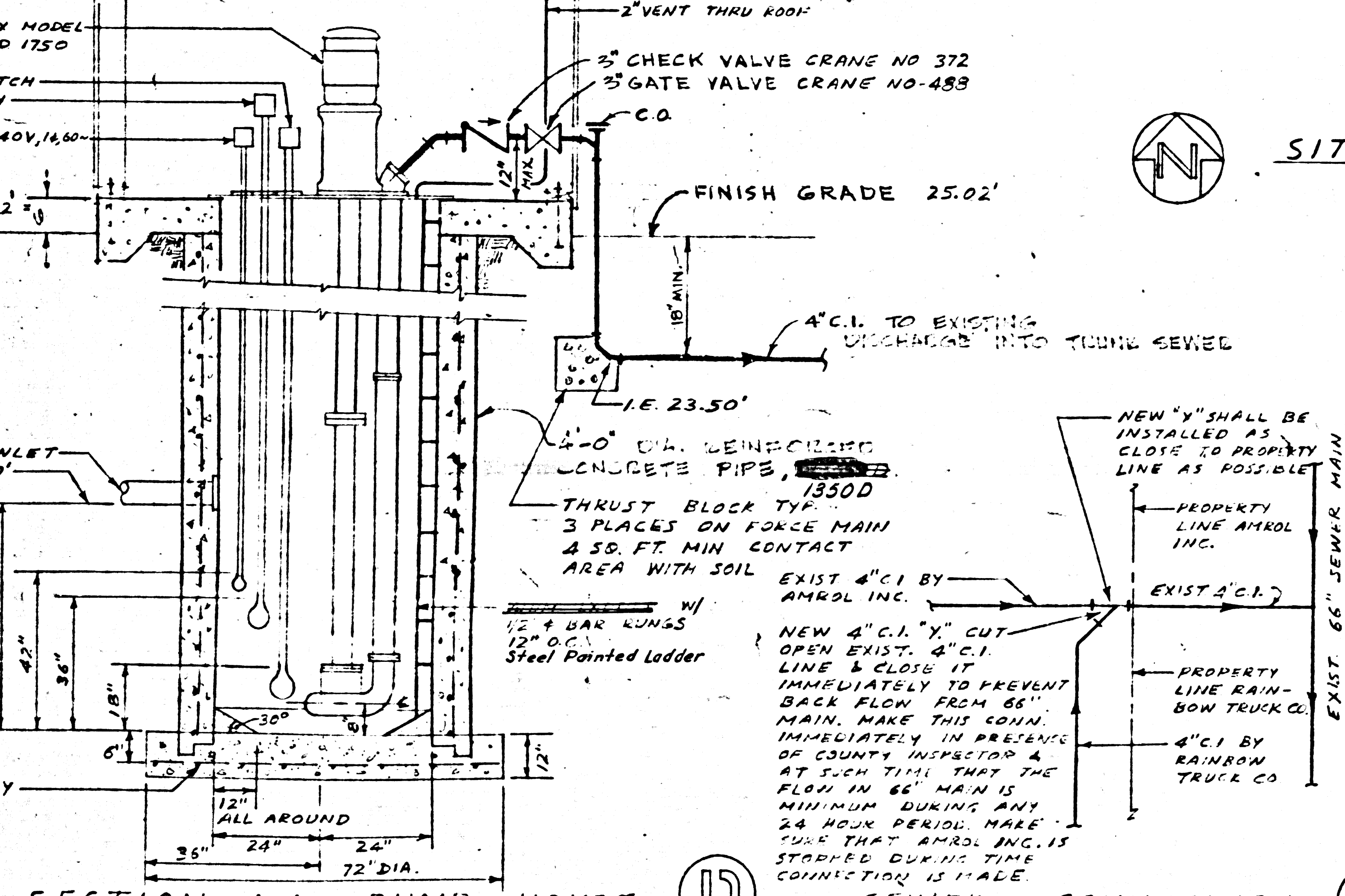
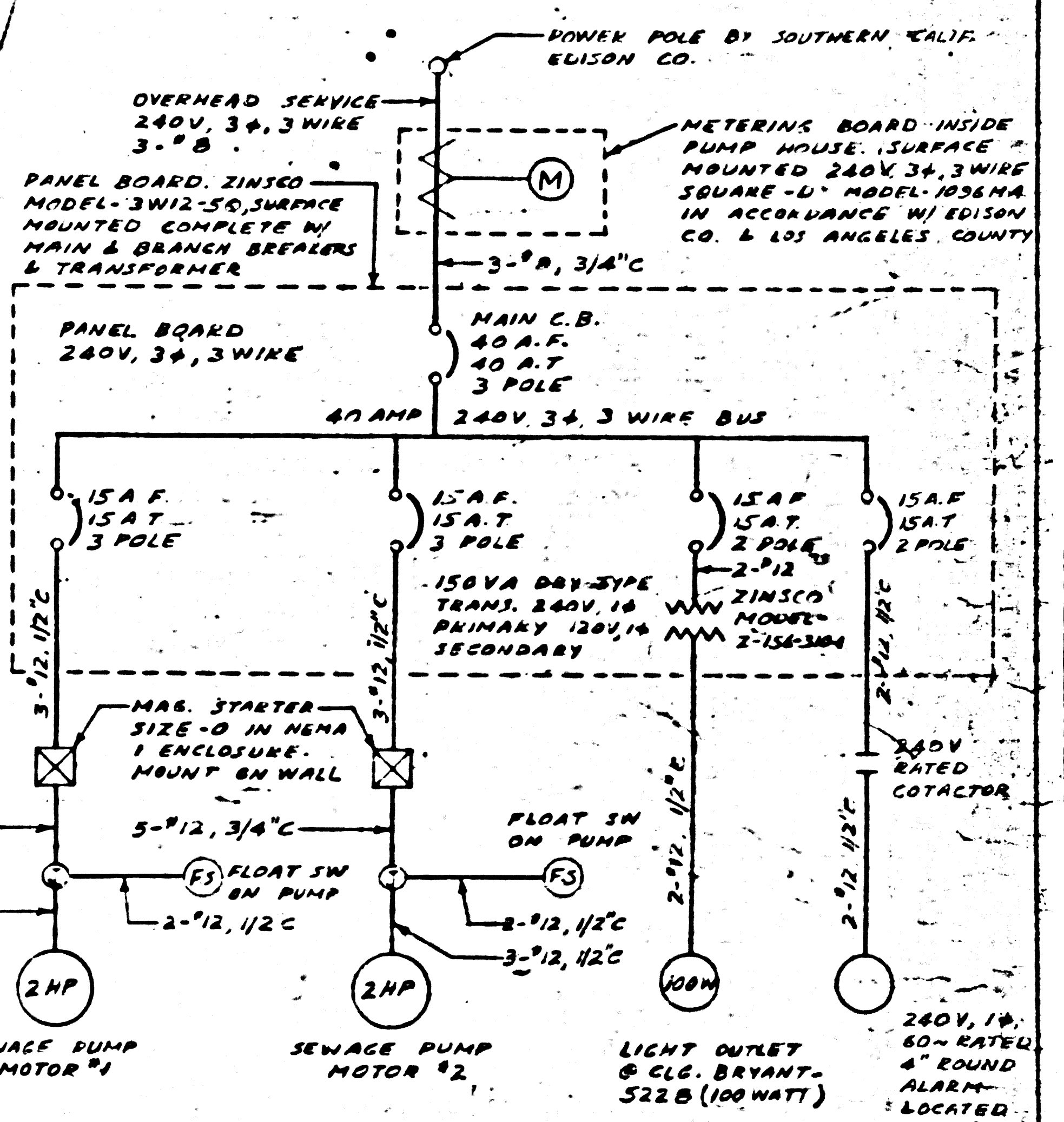
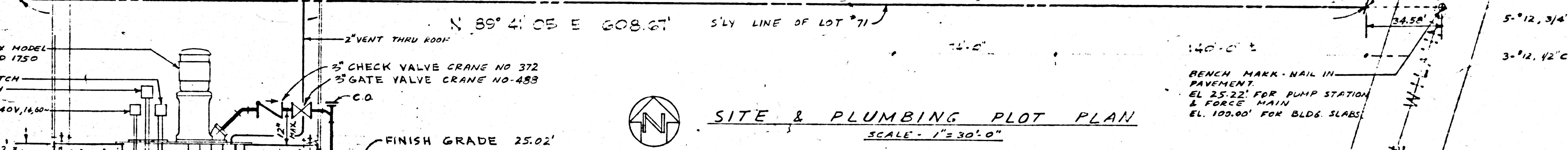
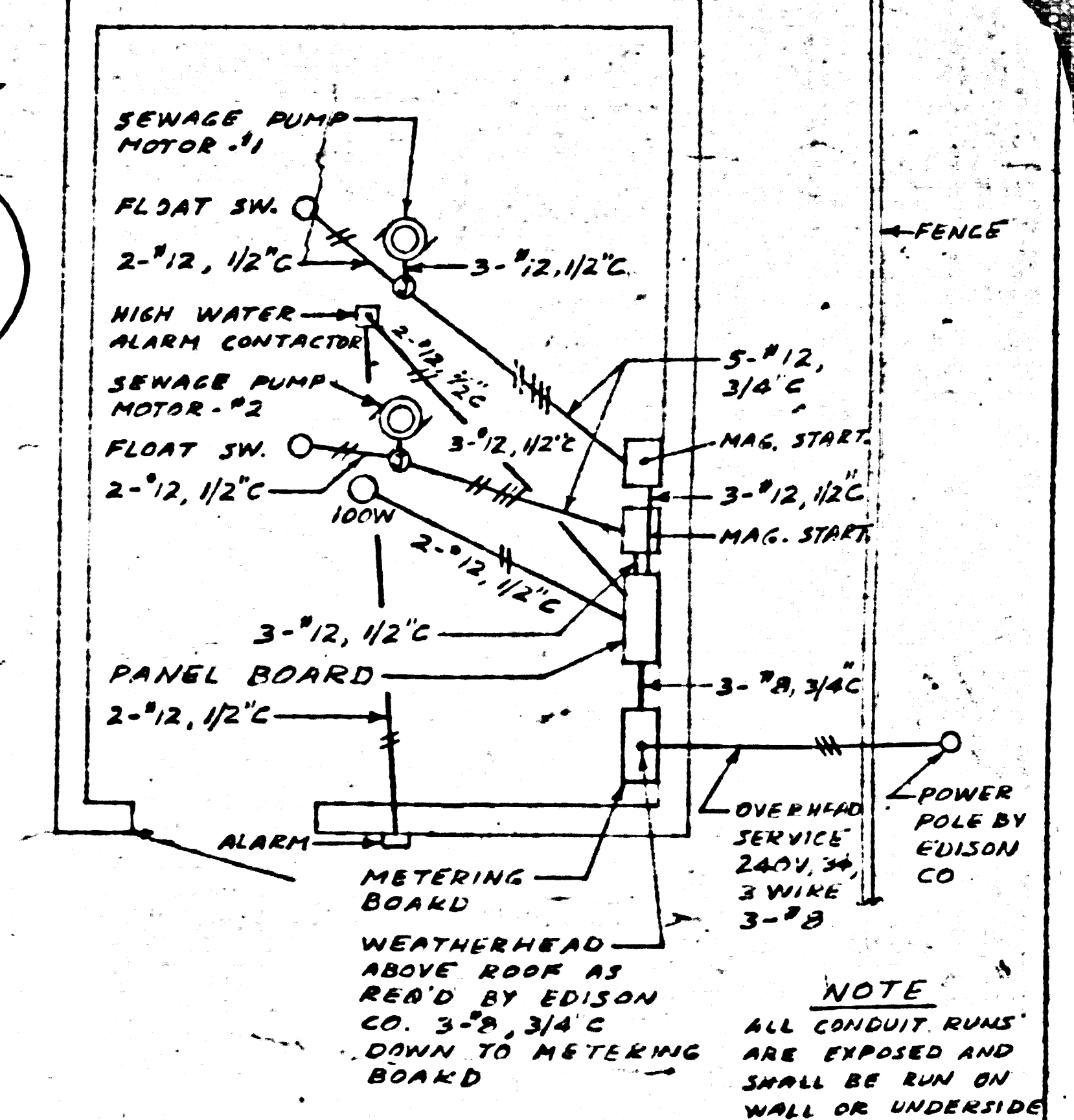
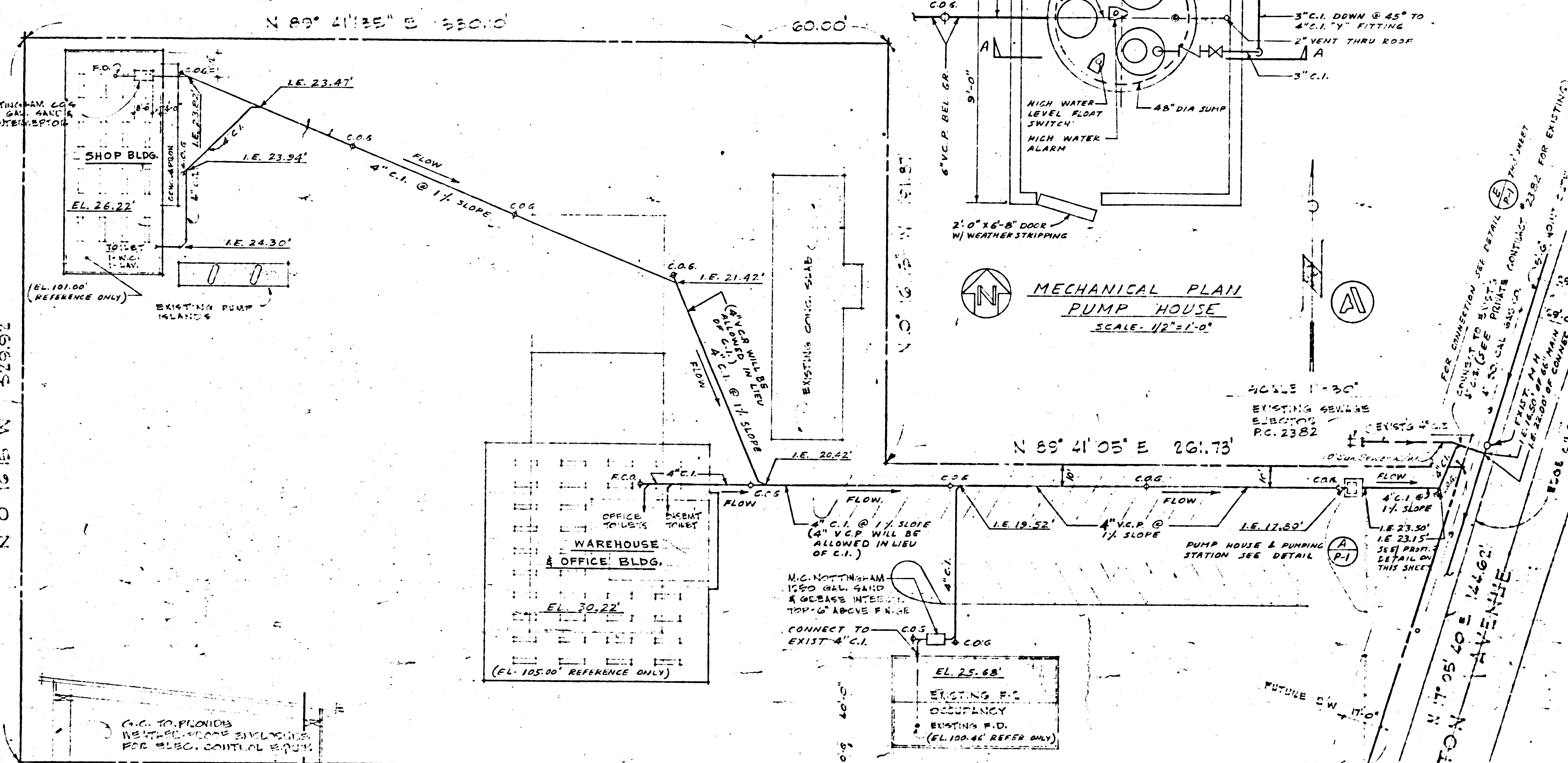


32796



NOTE:
A PORTION OF LOT 71-TRACT 4054, N.B. 44-33-41, COUNTY OF LOS ANGELES, STATE OF CALIFORNIA.

GENERAL NOTES:

1. ALL WORK SHALL BE DONE IN ACCORDANCE WITH ALL APPLICABLE CODES SUCH AS STATE INDUSTRIAL SAFETY ORDERS, LOS ANGELES COUNTY PLUMBING & ELECTRICAL CODES AND OTHER REQUIREMENTS OF LOS ANGELES COUNTY SANITATION DEPT.
2. CONNECTION AS SHOWN IN DETAIL - THIS TUBST SHALL BE MADE IN PRESENCE OF COUNTY SANITATION DIST. REPRESENTATIVE & AS DIRECTED BY COUNTY.
3. ALL ELECTRICAL EQUIPMENT AS SHOWN IN PUMP HOUSE SHALL BE PROPERLY SUPPORTED ON WALL OR FROM FLOOR.
4. PROVIDE THRUST BLOCK & CLAMPS AT BENDS IN FORCE MAIN AS NOTED.

APPROVED BY: [Signature] 9/25/62
INDUSTRIAL WASTE DIVISION

Approval of this plan by the County of Los Angeles does not constitute a warranty on the part of the County of the location of, or the existence or non-existence of, any underground utility, pipe, or structure within the limits of this project.

Note:
No representative of the County Engineer will survey or layout any portion of the work.
No work shall be started without approval of the County Engineer.

NOTE:
THE CONTRACTOR SHALL NOTIFY THE CONSTRUCTION SUPERVISOR IMMEDIATELY BY TELEPHONE (MADISON 9-4747), EXISTING UTILITIES AND STRUCTURES BEING EXPOSED DURING ANY WORK UNDER THIS CONTRACT.

NO CONNECTIONS FOR THE DISPOSAL OF INDUSTRIAL WASTES SHALL BE MADE TO SEWERS SHOWN ON THESE DRAWINGS WITHOUT WRITTEN PERMISSION FROM THE CHIEF ENGINEER AND GENERAL MANAGER OF THE COUNTY SANITATION DISTRICTS.

Private Contract No. 6252
LOMITA BLDG. DIST. No. 12
W.S. 25-D-1
SHEETS ONE

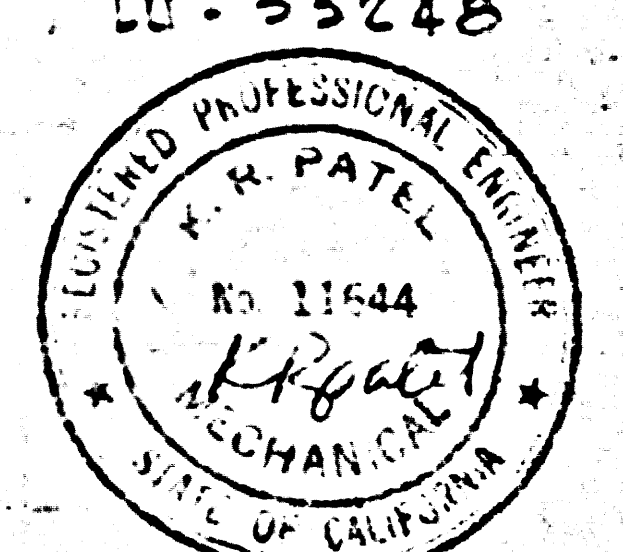
COUNTY OF LOS ANGELES, CALIFORNIA
APPROVED, JOHN A. LAMSON, County Engineer
By: [Signature] Asst. Sanitation Engineer
APPROVED, J. D. PARKQUIST, Chief Engineer
By: [Signature] Office Engineer

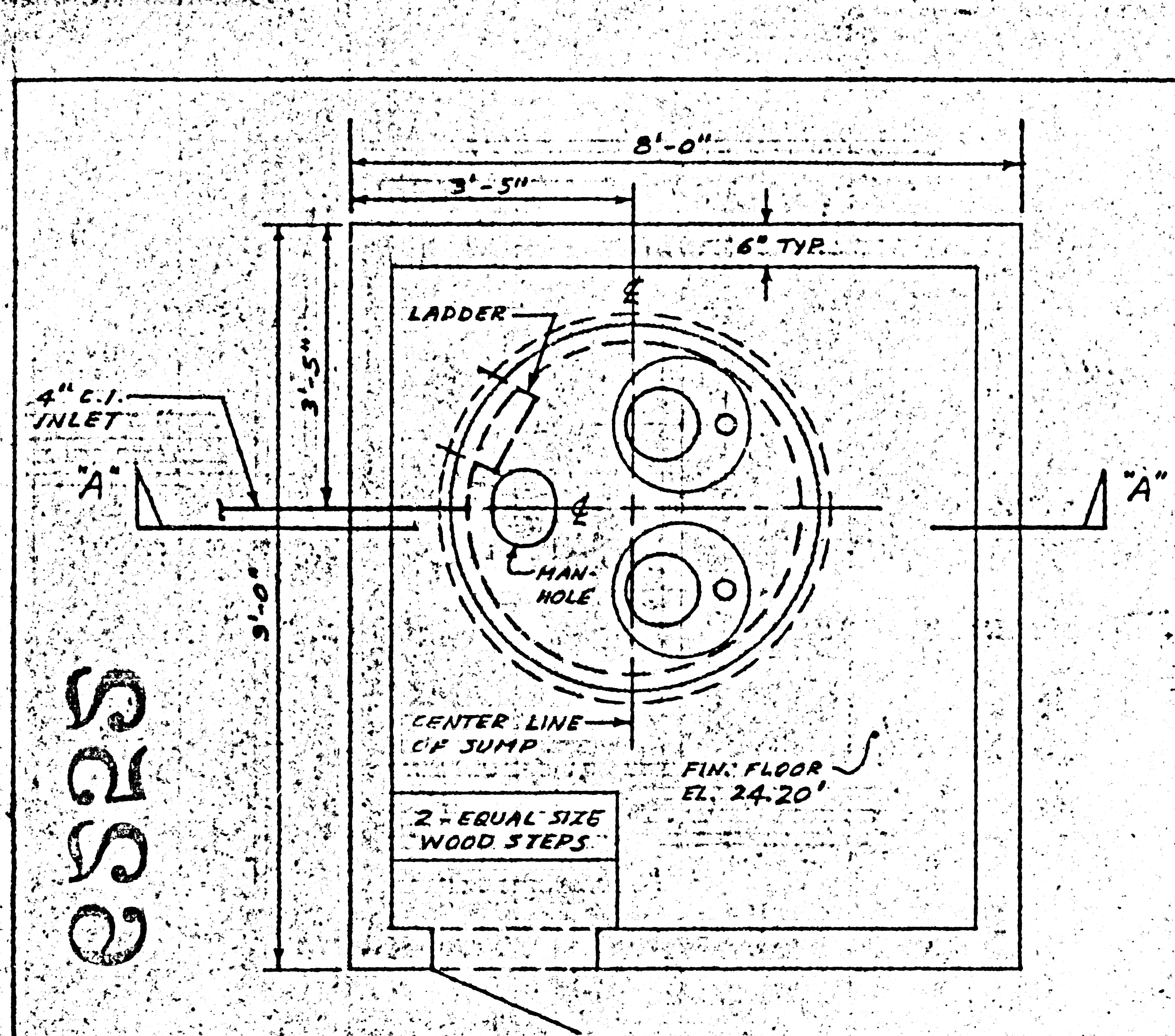
K. R. PATEL & ASSOCIATES
CONSULTING ENGINEERS
14575 PACIFIC BLVD.
LOS ANGELES 58, CALIF.
LU 33248

Office of County Engineer Reg. C. E. No. 12877E

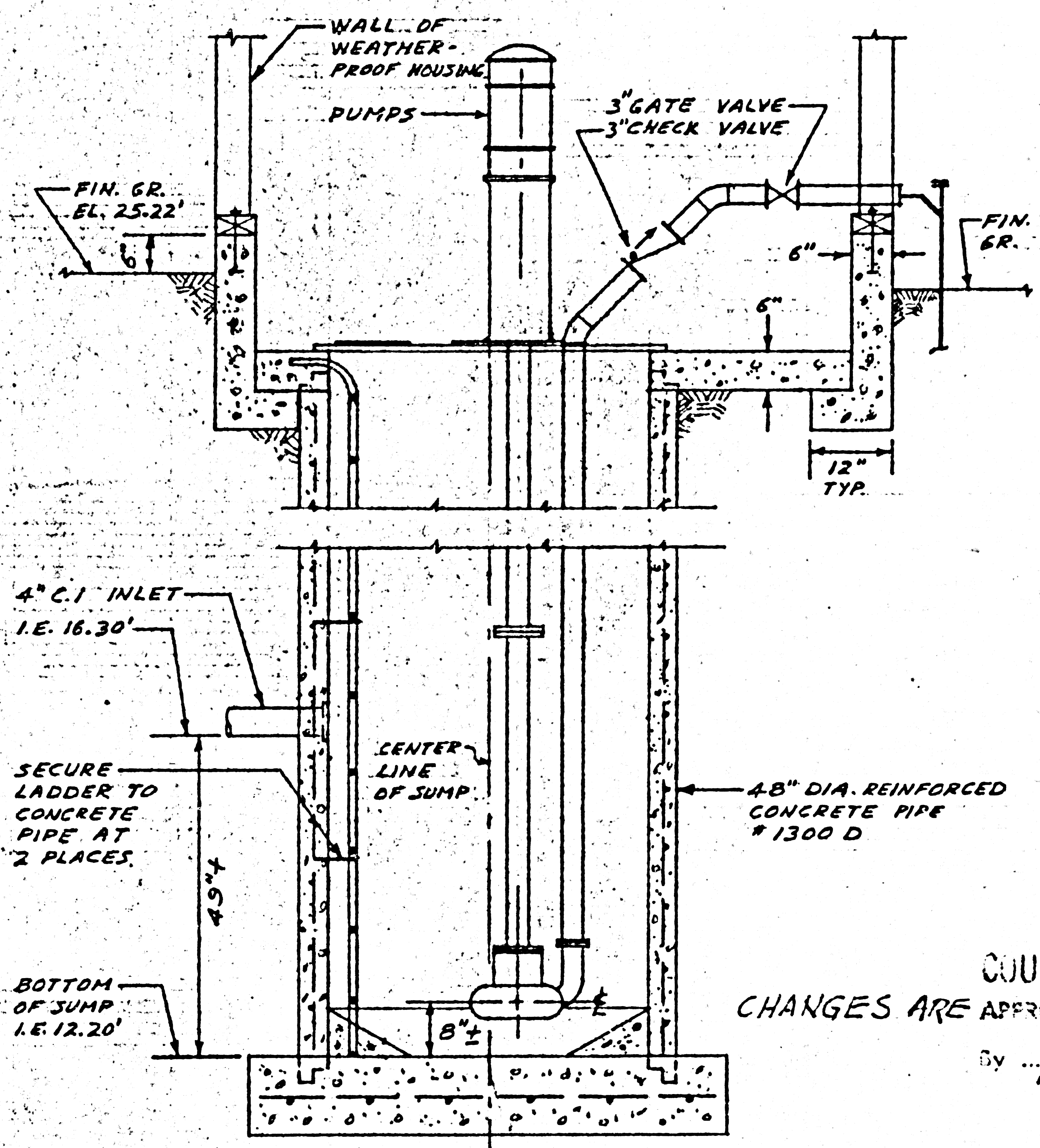
The above approval applies to the pump station & F.M. only.

APPROVED:	WAREHOUSE, OFFICE, & SITE IMPROVEMENT FACILITIES RAINBOW TRUCK CO. 251 WILMA AVE.	FOR:	R. NEIL MANOS 2545 HUNTINGTON DRIVE SAN MARINO, CALIFORNIA	ARCHITECT:	AT 7-7600	SITE PLAN & SEWER PLAN	DATE: 9/25/62 DRAWN: R.N.M.	SHEET: 101
-----------	---	------	--	------------	-----------	------------------------	--------------------------------	------------





PLAN - PUMP HOUSE
SCALE - 1/2" = 1'-0"



SECTION - "A-A"
PUMP HOUSE
SCALE - 1/2" = 1'-0"

NOTES

1. THIS DRAWING INDICATES CHANGES TO BE MADE IN ORIGINAL DRWG P-1.
2. ALL OTHER ITEMS NOT SHOWN HERE SHALL REMAIN AS SHOWN ON DRWG. P-1 & AS SPECIFIED.
3. LADDER IN PIT SHALL BE OF STEEL IN LIEU OF ALUMINUM. IT SHALL HAVE 1/2" x 4 STEEL BAR OR PIPE RUNGS 12" O.C. IT SHALL BE OF WELDED CONSTRUCTION.
4. LADDER SHALL BE SECURED AT TOP & BOTTOM BY MEANS OF EMBEDDING IN CONCRETE AS SHOWN HERE.
5. SECURE LADDER TO CONCRETE PIPE AT 2 PLACES IN ADDITION TO TOP & BOTTOM.
6. APPLY RUST RESISTANT PAINT TO LADDER.
7. DETAIL DESIGNATIONS AS SHOWN HERE ARE SAME AS THOSE SHOWN ON DRWG. P-1.
8. BOTTOM SLAB OF SUMP SHALL BE POURED IN ONE POURING. DURING THIS POURING 48" DIA PIPE SHALL BE PLACED OR HELD IN PLACE VERTICALLY BY MEANS OF PLACING SOLID PIECES AT BOTTOM PERIPHERY OF PIPE.

COUNTY OF LOS ANGELES, CALIFORNIA
CHANGES ARE APPROVED, JOHN A. LAMDIS, County Engineer
By *Richard E. Kuhn*
Asst. Sanitation Engineer
R.C.E. 7860

CHANGES
P.C. 6252

K.R. PATEL & ASSOCIATES CONSULTING ENGINEERS
4575 PACIFIC BLVD., LOS ANGELES - 58, CALIFORNIA. LU-3-3248.

DATE-10-18-62 RAINBOW TRUCK COMPANY
21119 WILMINGTON AVENUE, WILMINGTON, CALIFORNIA

