

BENCH MARK
 5 1/2" U.S.C. 1" S.S. Brass Disk Set in a Conc. Manu. & Shaped 0-487-1255
 Located 5.83 Mile N.W. of Intersection of Camp Plenty Road and Salinas
 Canyon Road at the Intersection of Camp Plenty Road and a Paved Road
 Leading to the G.S. Ranch (Part of N.E. Corner of Intersection and next
 to a N.W. Witness Post Road Department Elevation 1356.472

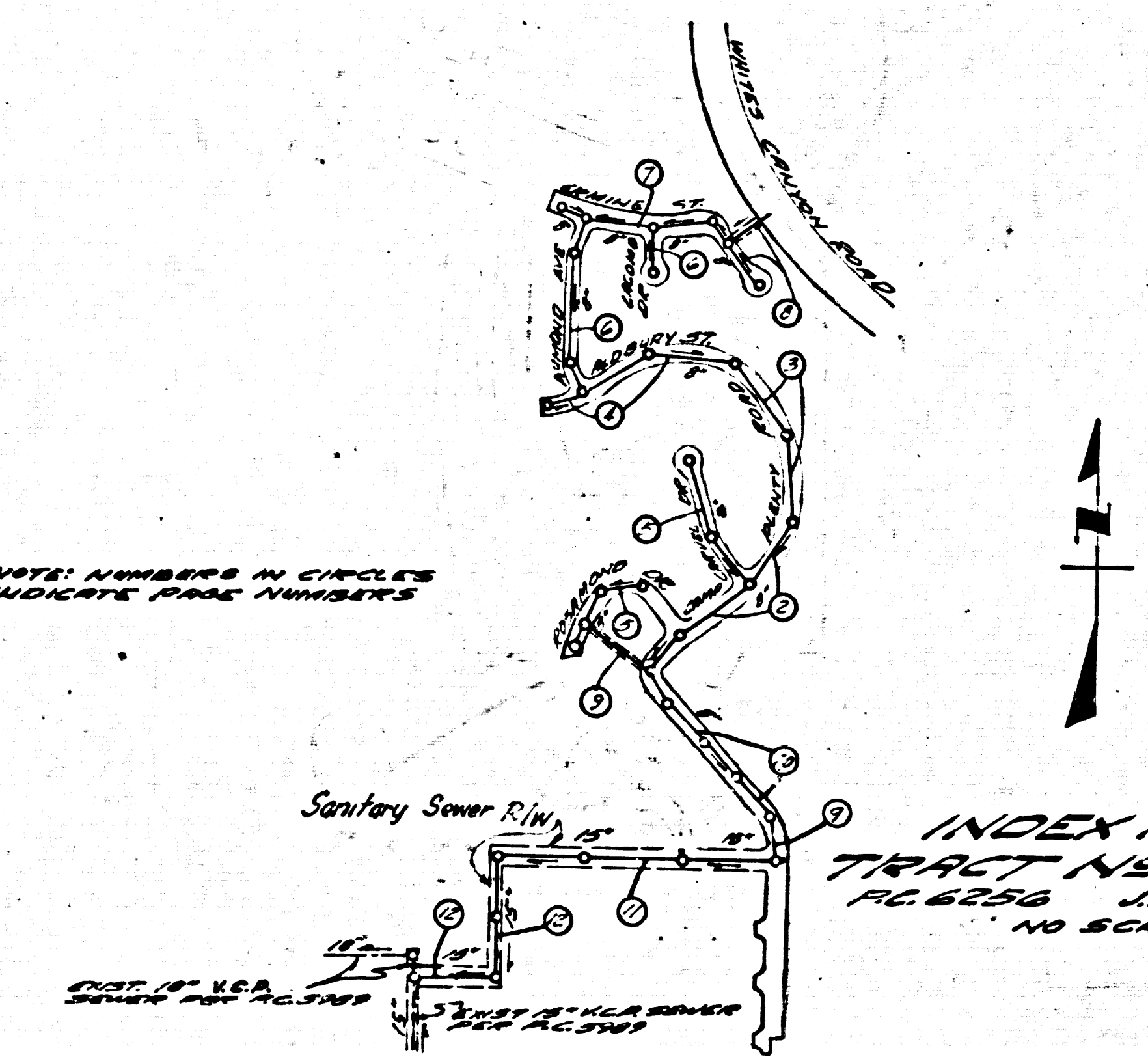
DOUBLE SCALE
NEWHALL BLDG. DIST. NO. 82

PROFILE ALIGNMENT AND GRADE OF **P.C. 6256**
SANITARY SEWERS PAGE 1
 CONSTRUCTED IN **J.N. 0358.43**

TRACT NO 27335
PRIVATE CONTRACT NO. 6256

W.S. 62
6 SHEETS; 12 PAGES
 SCALE: VERT. 1" = 8'
 HORIZ. 1" = 40' 14 JUNE, 1962
 PREPARED IN THE OFFICES OF
MCINTIRE & QUIROS
 519/62
 REG. C. E. NO. 3568

33334



INDEX MAP
TRACT NO 27335
P.C. 6256 J.N. 0358.43
NO SCALE

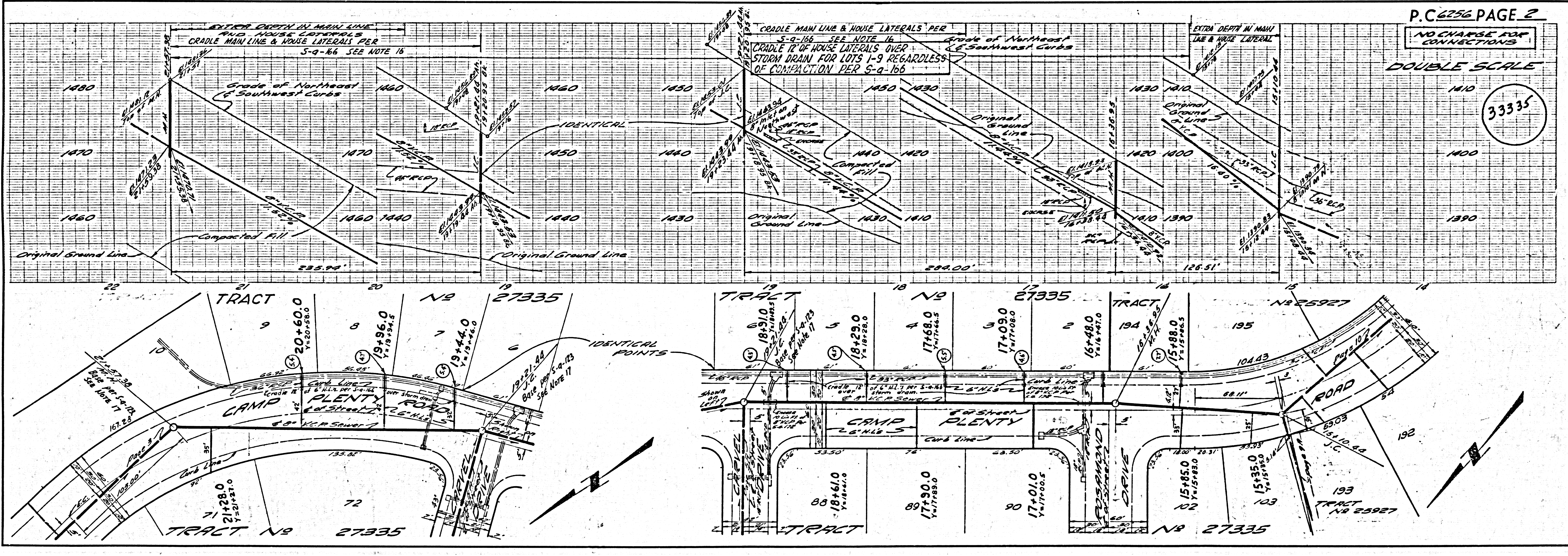
REVISIONS APPROVED
 Change Alignment and Grades on
 Page 10 from Sta. 12179.14 to Sta. 12180.44
 Page 2 from Sta. 12180.44 to Sta. 12185.55
 Page 8 and Page 5-C
 Change Alignment on Page 9-A
 Lower Curb and Sewer Grades on
 Page 8-B

NO CHARGE FOR CONNECTIONS
 Manny Abot 7/25/62

- NOTES:**
1. PROVIDE STAKES ON THE PROPERTY LINE OR PROPERTY LINES PRODUCED AT RIGHT ANGLES TO THE SEWER LINE AT THE CENTER LINE OF EACH MANHOLE.
 2. NO REPRESENTATIVE OF THE COUNTY ENGINEER WILL SURVEY OR LAY OUT ANY PORTION OF THE WORK.
 3. THE OWNER OR HIS AUTHORIZED REPRESENTATIVE SHALL FURNISH THE COUNTY ENGINEER WITH GRADE SHEETS AND STATIONING FOR ALL HOUSE LATERALS AND Y BRANCHES AND SHALL PROVIDE STAKES FOR THEM AT THEIR PROPER LOCATIONS WITH STATIONING PLAINLY MARKED. ANY CHANGE IN LOCATION SHALL BE REQUESTED IN WRITING BY THE OWNER OR HIS REPRESENTATIVE.
 4. THE PRIVATE ENGINEER SHALL FURNISH THE HOUSE LATERAL DEPTH AT THE PROPERTY LINE BELOW THE TOP OF CURB ELEVATION FOR EACH HOUSE LATERAL ON THE GRADE SHEET.
 5. NO REVISIONS SHALL BE MADE IN THESE PLANS WITHOUT THE APPROVAL OF THE COUNTY ENGINEER.
 6. USE STANDARD MANHOLE FRAMES AND COVERS, S-117, EXCEPT AS NOTED.
 7. USE EXTERIOR STANCHIONS EXCEPT AS NOTED.
 8. USE MECHANICAL COMPRESSION JOINTS FOR ALL U.C.P. JOINTS PER SPECS. SECS. 14 & 47.
 9. RESURFACE ALL TRENCH WITHIN PAVED AREA TO MEET L.A. COUNTY ROAD DEPT. OR CALIF. STATE HIGHWAY REQUIREMENTS IN ACCORDANCE WITH PERMITS.
 10. ENCASE FOUR FEET OF SEWER AT POINTS OF INTERFERENCE WITH POLES, CASE III, S-6-372.
 11. HOUSE LATERALS TO BE CONSTRUCTED WITH INVERTS AT PROPERTY LINE 6 FEET BELOW CURB GRADE EXCEPT AS NOTED.
 12. FOR ALLOWABLE LEAKAGE TEST USE FORMULA NO. 101, SPECS. SEC. 84.
 13. MANHOLE TOPS IN UNIMPROVED RIGHTS-OF-WAY TO BE SIX INCHES ABOVE FINISHED GRADE.
 14. THE CONTRACTOR SHALL NOTIFY THE CONSTRUCTION & STORM DRAIN DIVISION BY TELEPHONE, MADISON 9-474, EXT. 8841 AT LEAST TWENTY-FOUR HOURS BEFORE STARTING ANY WORK UNDER THIS CONTRACT.
 15. MANHOLES SHALL BE BRICK SEWER STRUCTURES PER S.S. 101, DEEPEST CONCRETE MANHOLES PER S.S. 123 OF S.S. 123 SHALL BE USED AS AN ALTERNATE IN LOCATIONS APPROVED BY THE COUNTY ENGINEER.
 16. A NO CONSTRUCTION SHALL BE PERMITTED IN FILLED AREAS UNLESS ACCEPTABLE COMPACTATION IS SUBMITTED TO THE CONSTRUCTION DIVISION OF THE COUNTY ENGINEER'S DEPARTMENT THAT RELATIVE COMPACTION IS GREATER THAN 90%.
 17. IN COMPACTING SHALL BE 45% TAMPING FOOT, THE SEWER MUST BE COMPACTED AS SHOWN ON THE PLANS PER S.S. 122.
 18. IF COMPACTION IS GREATER THAN 90% COMPACTION IS NOT REQUIRED.
 19. UPON ACCEPTABLE COMPACTION TO THE CONSTRUCTION DIVISION OF THE COUNTY ENGINEER THAT THE COMPACTION IS GREATER THAN 90% ALL BRICK PER S.S. 123 WILL NOT BE REQUIRED.
 20. FIGURES IN CIRCLES AT ENDS OF HOUSE LATERALS INDICATE HOUSE LATERALS SHALL BE CONSTRUCTED WITH 1/4" RISE PER FOOT TO PROPERTY LINE.
 21. SPECIFIC NOTES ON THIS DRAWING SHALL APPLY IN THE CONSTRUCTION OF THIS PROJECT.
 22. FIGURES IN CIRCLES INDICATE DEPTH OF HOUSE LATERALS AT PROPERTY LINE.
 23. ALL STATE AND LOCAL TRENCH SAFETY ORDERS WILL BE RIGIDLY ENFORCED.
- NO CONNECTIONS FOR THE DISPOSAL OF INDUSTRIAL WASTES SHALL BE MADE TO SEWERS SHOWN ON THESE DRAWINGS WITHOUT WRITTEN PERMISSION FROM THE CHIEF ENGINEER AND GENERAL MANAGER OF THE COUNTY SANITATION DISTRICTS.

NOTE:
 GRADES TO WHICH THIS IMPROVEMENT IS TO BE CONSTRUCTED ARE SHOWN ON PLANS AND PROFILES. GRADE POINTS FOR TOP OF CURBS, CENTER LINE OF STREETS, OR CENTER LINE OF ALLEYS ARE SHOWN BY CIRCLES ON PROFILES. AT ALL POINTS BETWEEN DESIGNATED POINTS THE GRADE SHALL BE ESTABLISHED SO AS TO CONFORM TO A STRAIGHT LINE DRAWN BETWEEN SAID DESIGNATED POINTS.
 ELEVATIONS ARE IN FEET ABOVE U.S.C. & G.S. SEA LEVEL DATUM OF 1929.
 THIS DRAWING AND THE DATA HEREON ARE HEREBY MADE A PART OF THE SPECIFICATIONS.
 WORK SHALL BE CONSTRUCTED ACCORDING TO SPECIFICATIONS ON FILE IN THE OFFICE OF THE COUNTY ENGINEER AND SHALL BE PROSECUTED ONLY IN THE PRESENCE OF THE COUNTY ENGINEER.
 BEFORE WORK CAN BE STARTED, THE CONTRACTOR MUST OBTAIN A PERMIT TO EXCAVATE IN COUNTY STREETS FROM THE L.A. COUNTY ROAD DEPT., DISTRICT OFFICE NO. 3, AND PAY A FEE WITH THE COUNTY ENGINEER ROOM \$70.00 MUST SECOND STREET SUFFICIENT TO COVER THE COST OF CONSTRUCTION INSPECTION AND RECORD PLANS.
 APPROVAL OF THIS PLAN BY THE COUNTY OF LOS ANGELES DOES NOT CONSTITUTE A REPRESENTATION AS TO THE ACCURACY OF THE LOCATION OR THE EXISTENCE OR NON-EXISTENCE OF ANY UNDERGROUND UTILITY PIPE, OR STRUCTURE WITHIN THE LIMITS OF THIS PROJECT. THIS NOTE APPLIES TO ALL PAGES.
 IF WORK IS TO BE DONE IN A STATE HIGHWAY, A PERMIT MUST BE OBTAINED FROM THE STATE OF CALIFORNIA, DIVISION OF HIGHWAYS, 128 SOUTH SPRING STREET.

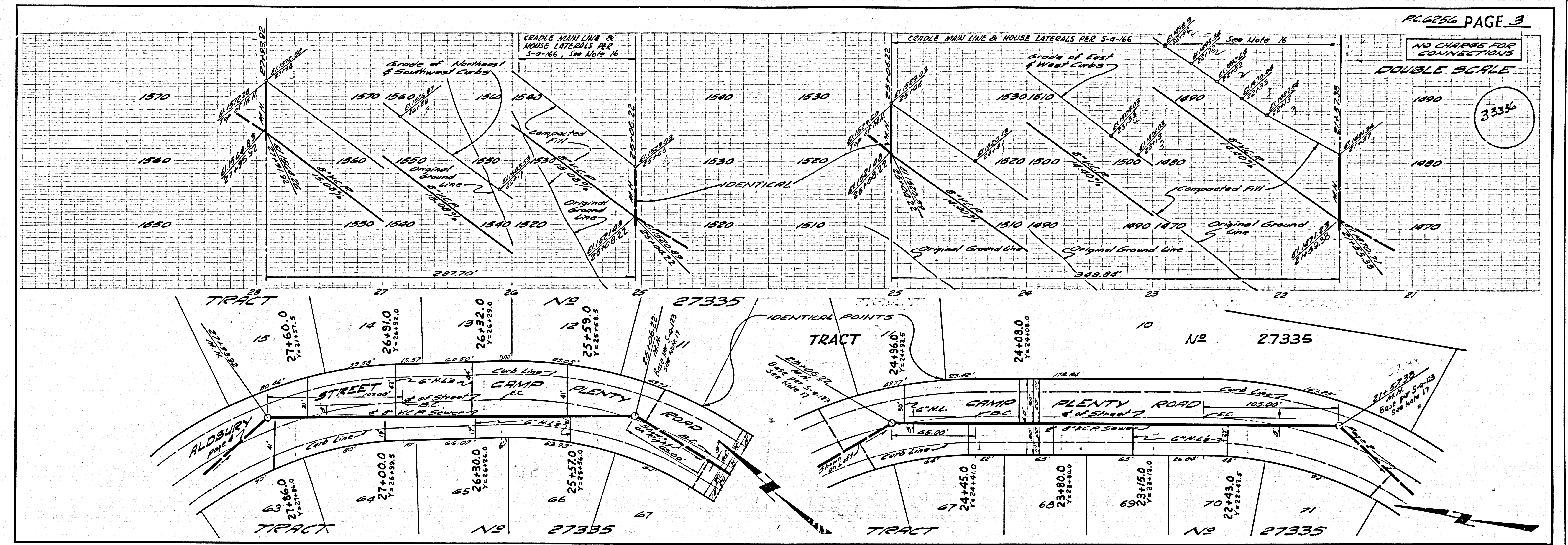
COUNTY OF LOS ANGELES, CALIFORNIA
 APPROVED, JOHN A. LAMBIE, COUNTY ENGINEER
 APPROVED, J.D. FORTINER, CHIEF ENGINEER
 ASST. SANITATION ENGINEER
 CHECKED BY, *[Signature]*, 10-4-62
 OFFICE OF COUNTY ENGINEER, REG. C. E. NO. 12443
 RECOMMENDED, *[Signature]*
 ACTING ANTELOPE VALLEY REGIONAL BUSINESS



P.C. 6256 PAGE 2
NO CHARGE FOR CONNECTIONS
DOUBLE SCALE
 33335

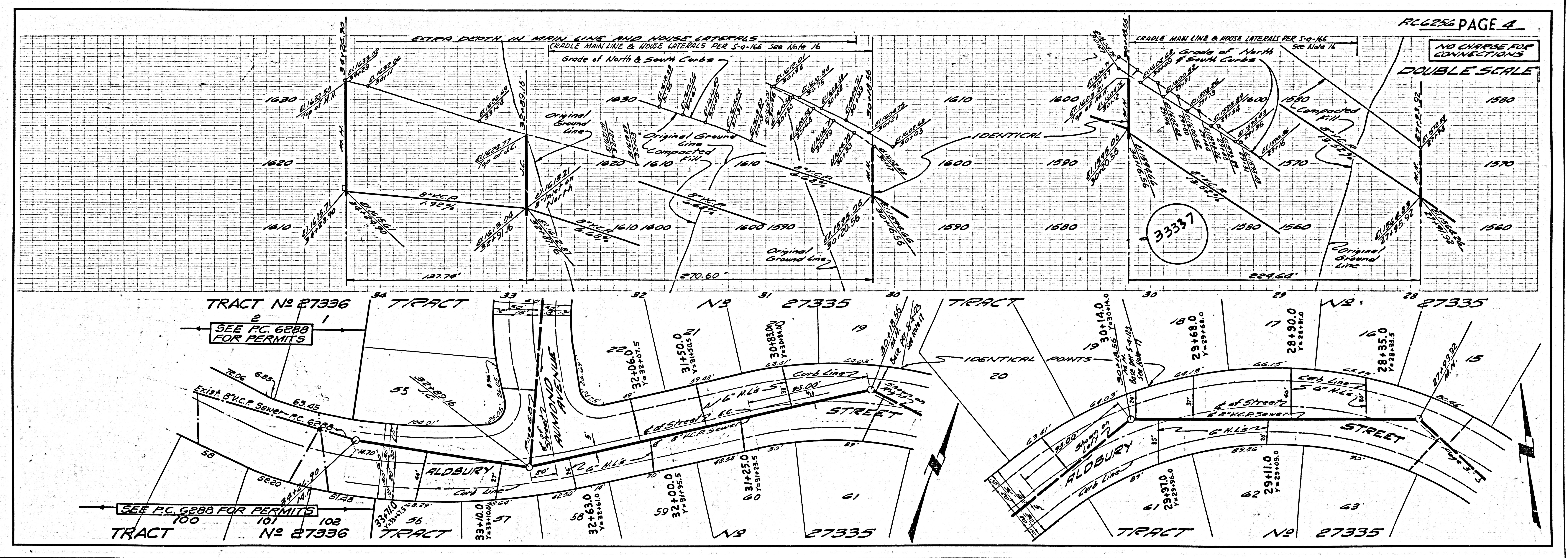
NO CHARGE FOR CONNECTIONS
DOUBLE SCALE

33336



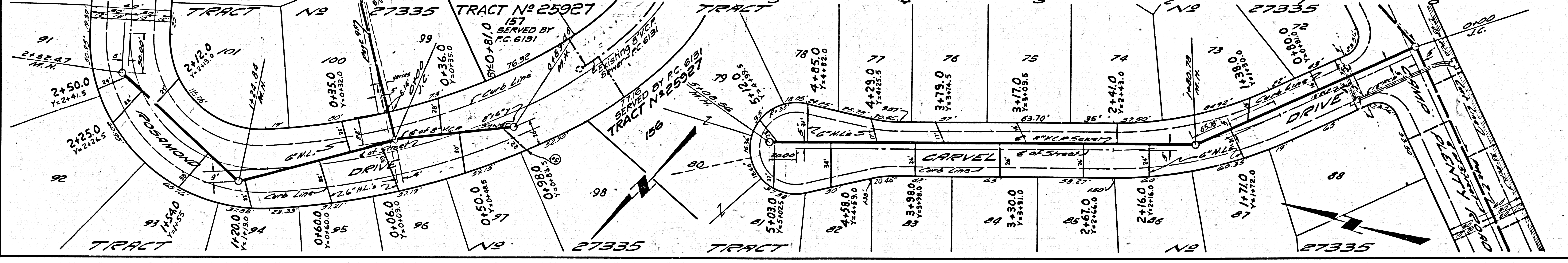
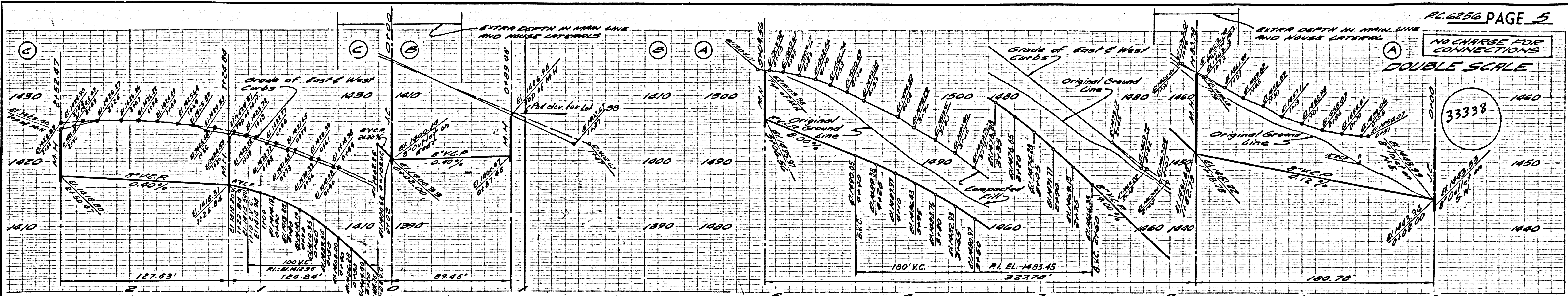
NO CHARGE FOR CONNECTIONS
DOUBLE SCALE

33337

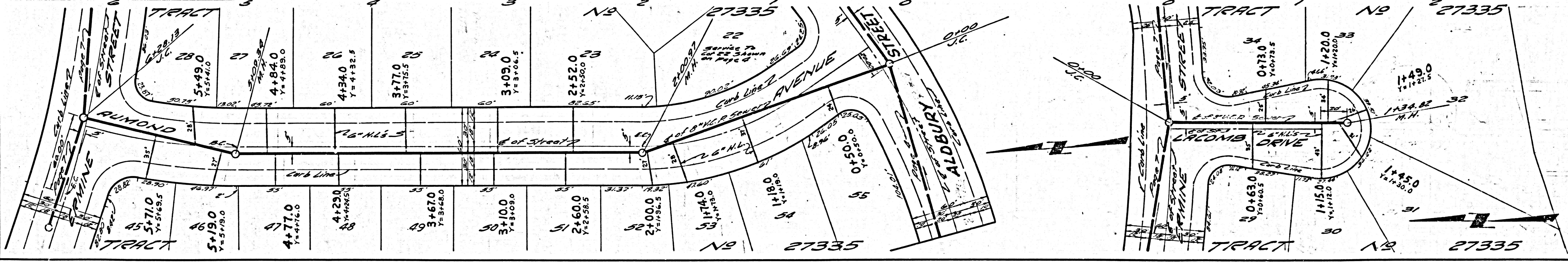
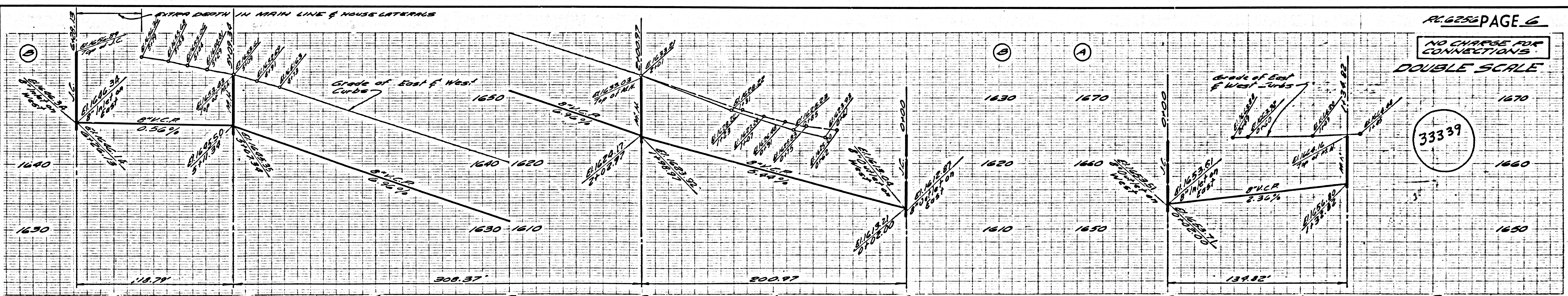


S & S E 150 L.A. COUNTY SEWER SHEET NO. 2 SO. CAL. BLUEPRINT CO.

NO CHARGE FOR CONNECTIONS
DOUBLE SCALE



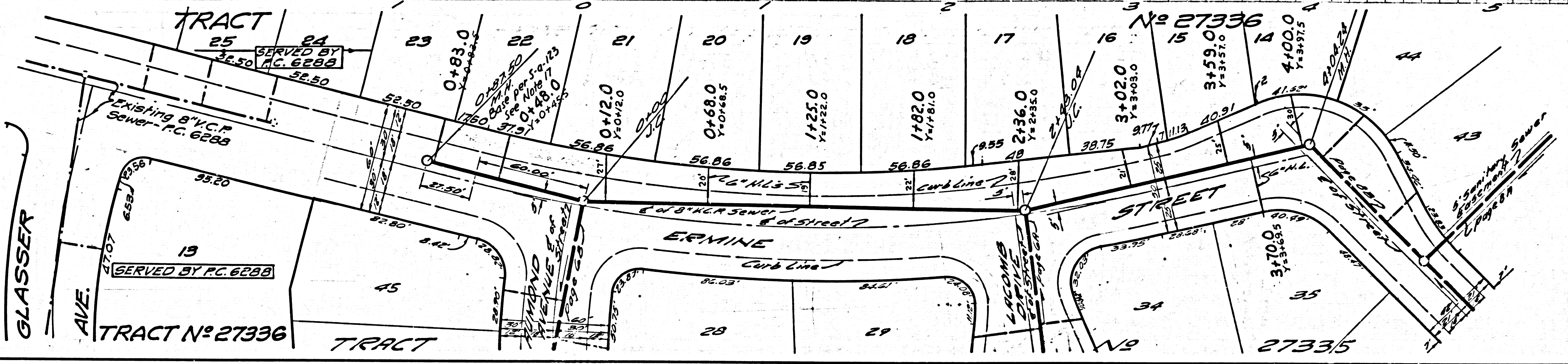
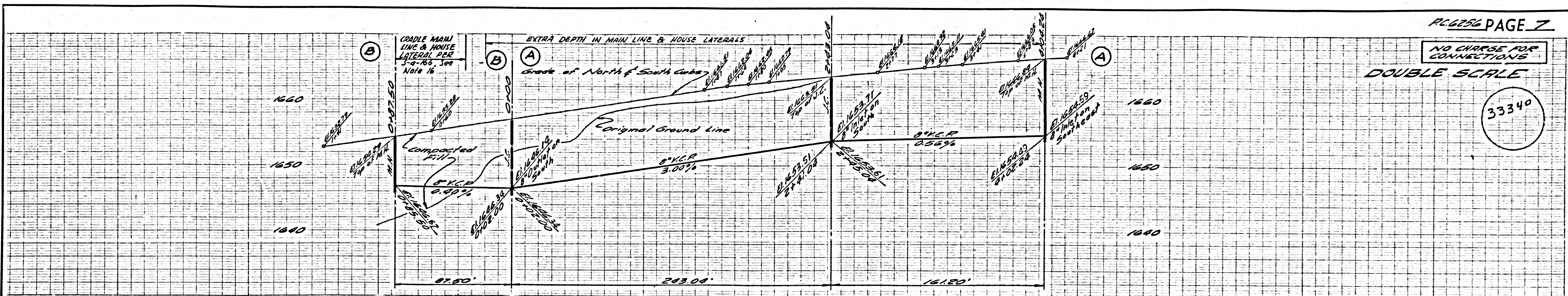
NO CHARGE FOR CONNECTIONS
DOUBLE SCALE



NO CHARGE FOR CONNECTIONS

DOUBLE SCALE

33340

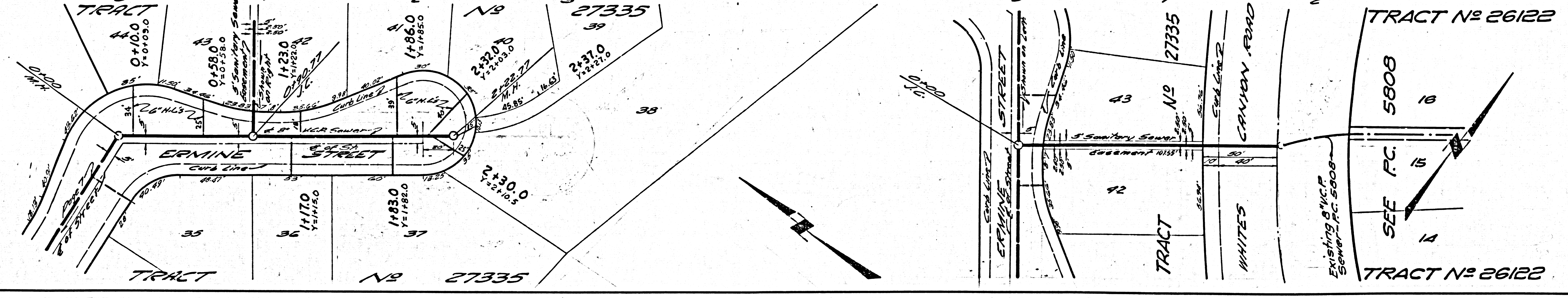
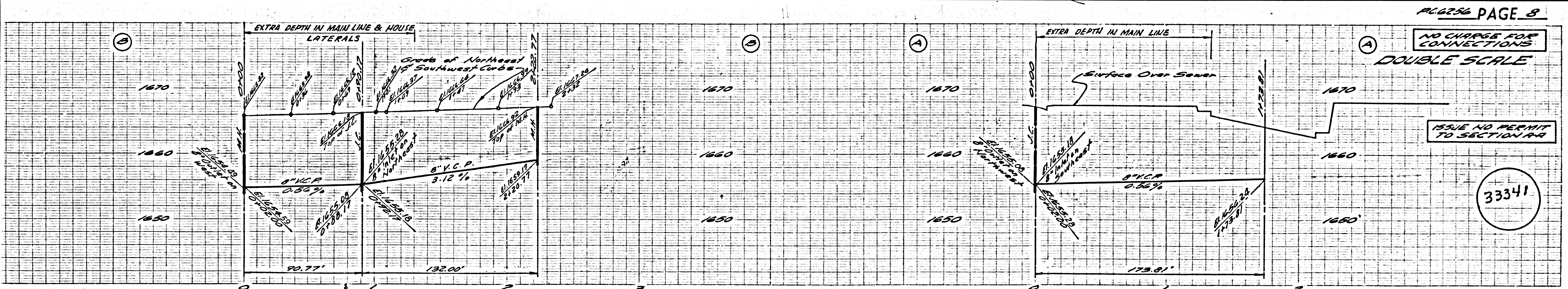


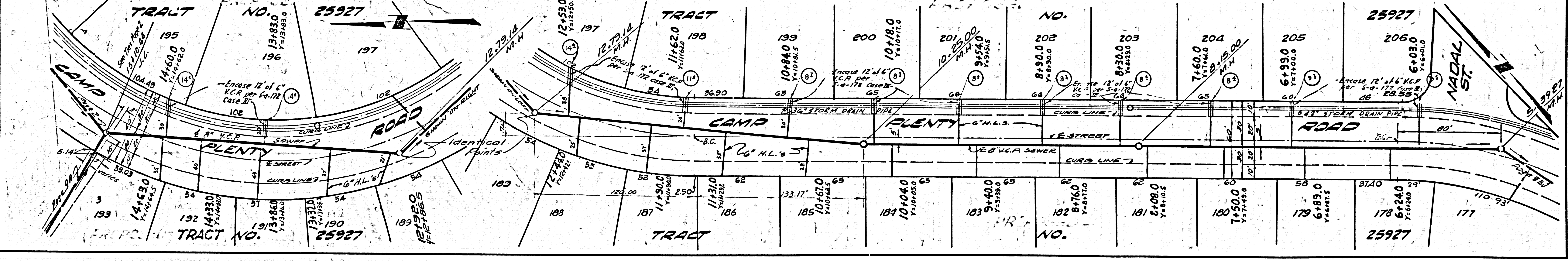
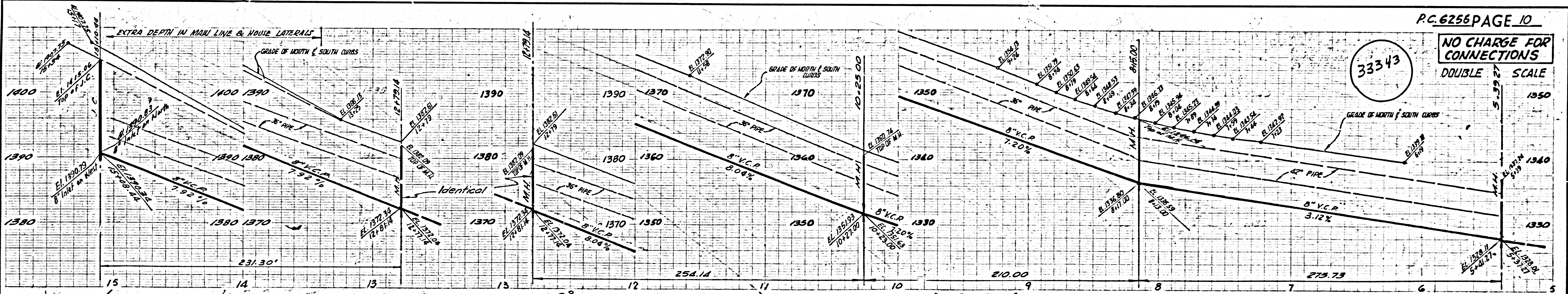
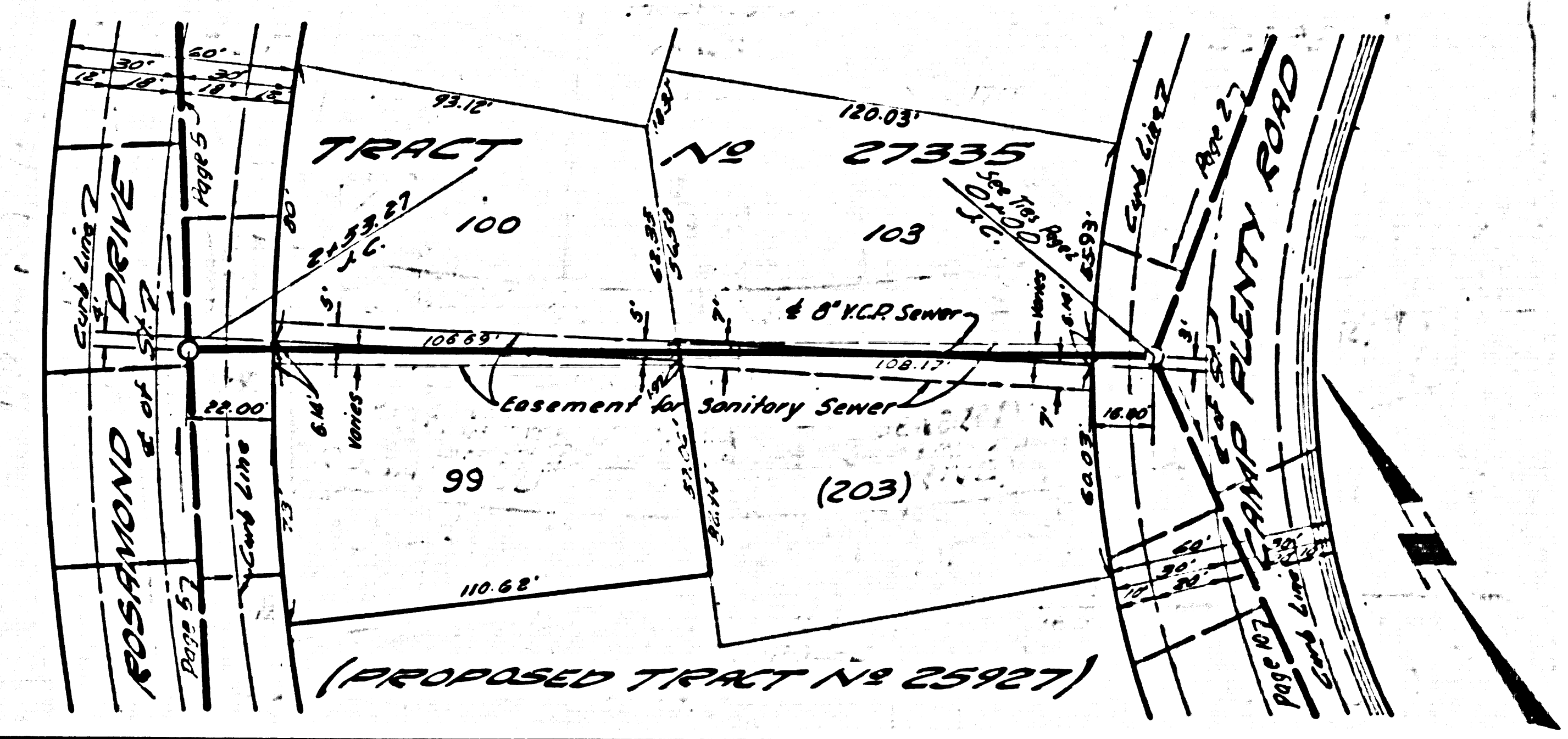
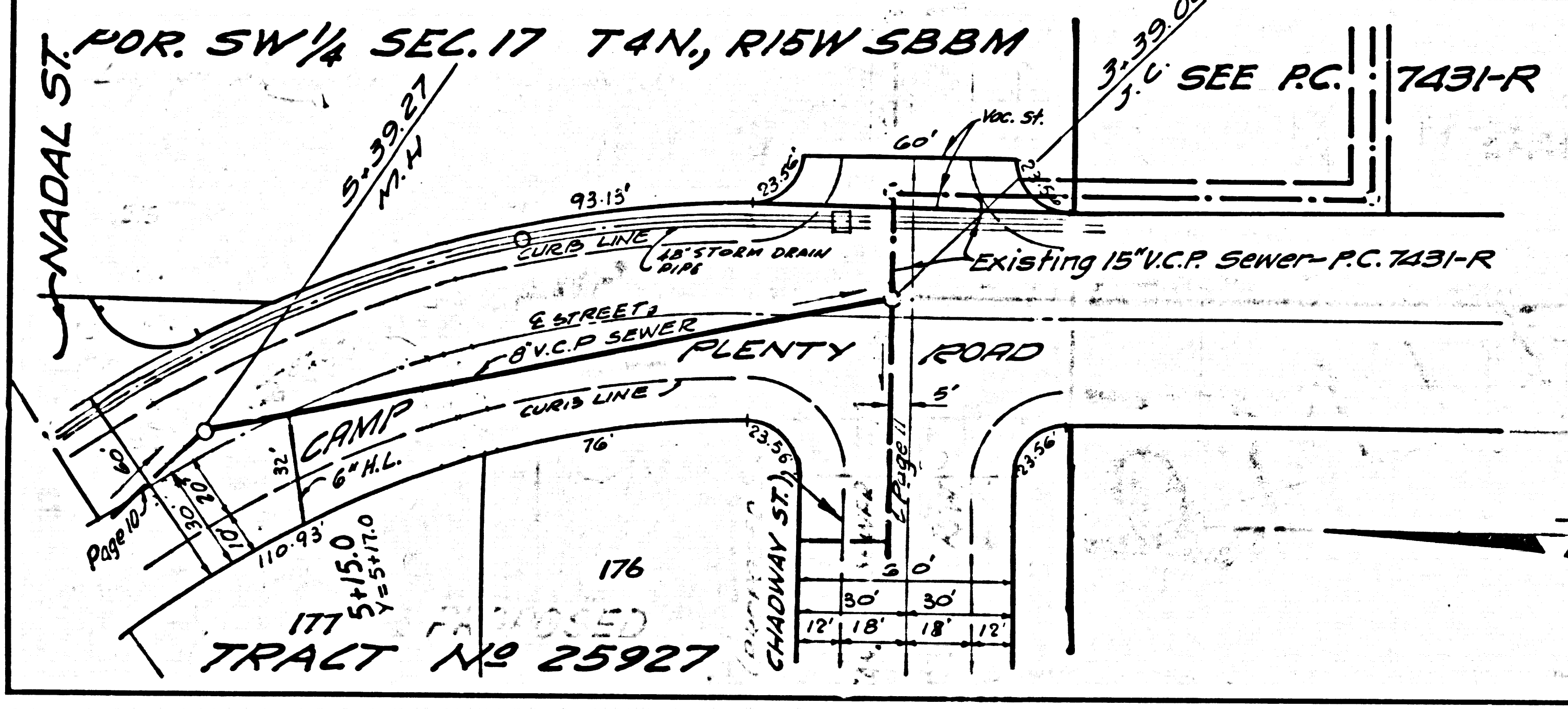
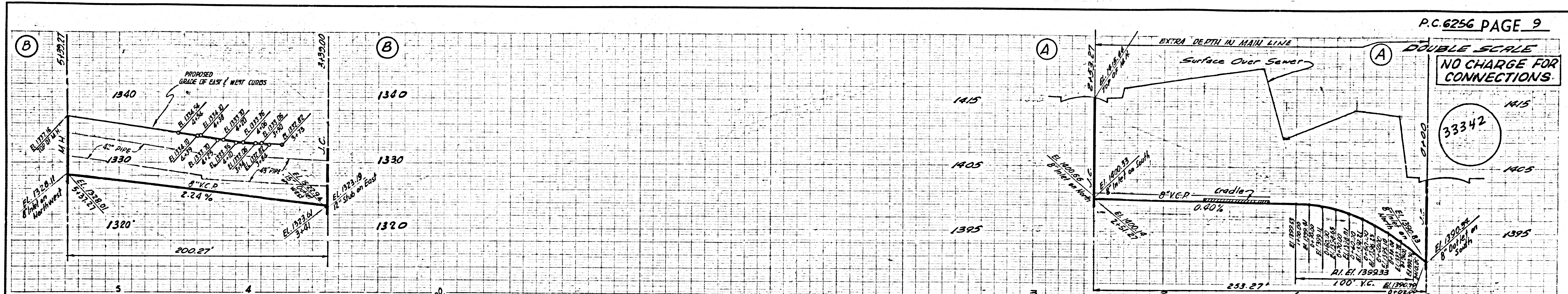
NO CHARGE FOR CONNECTIONS

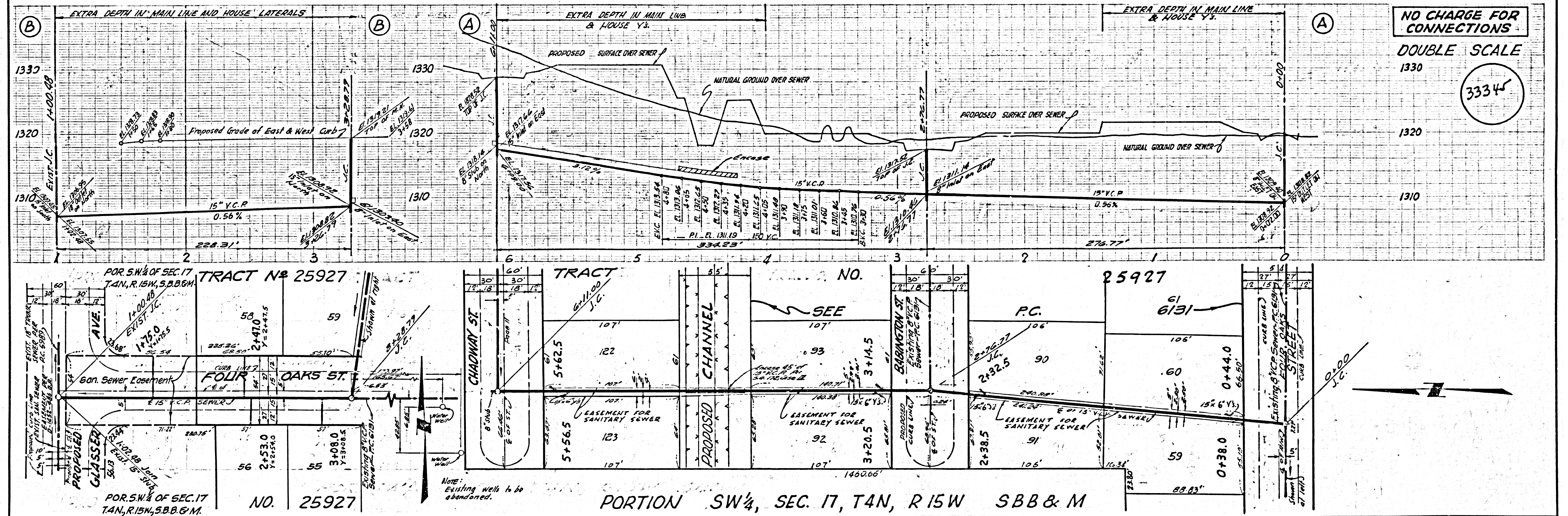
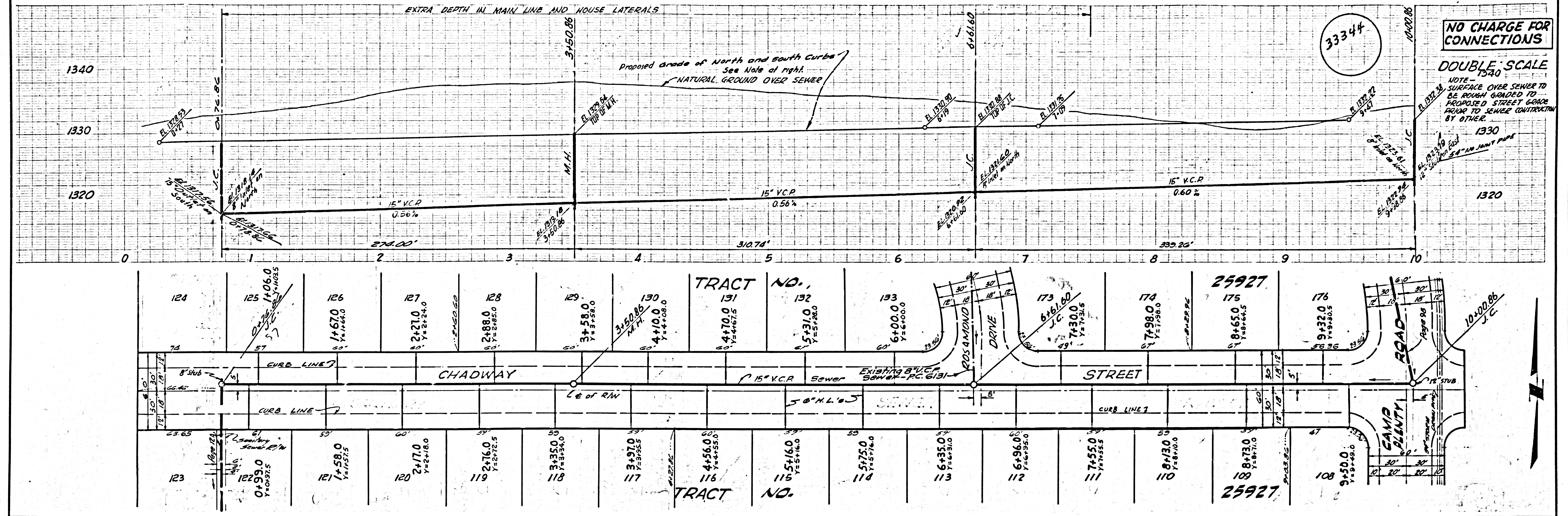
DOUBLE SCALE

ISSUE NO PERMIT TO SECTION 144

33341







PORTION SW 1/4, SEC. 17, T4N, R15W SBB & M

REVISIONS OF COMM. ENGINEERS