

BENCH MARK: S.G. 1753
 L&T. End Cb. ± 12' North B.C.R.
 ± 82' North of Valley Blvd.
 & ± 20' East of La Seda Road.
 (Baseline) 1955 Adj.
 Elevation 419.895

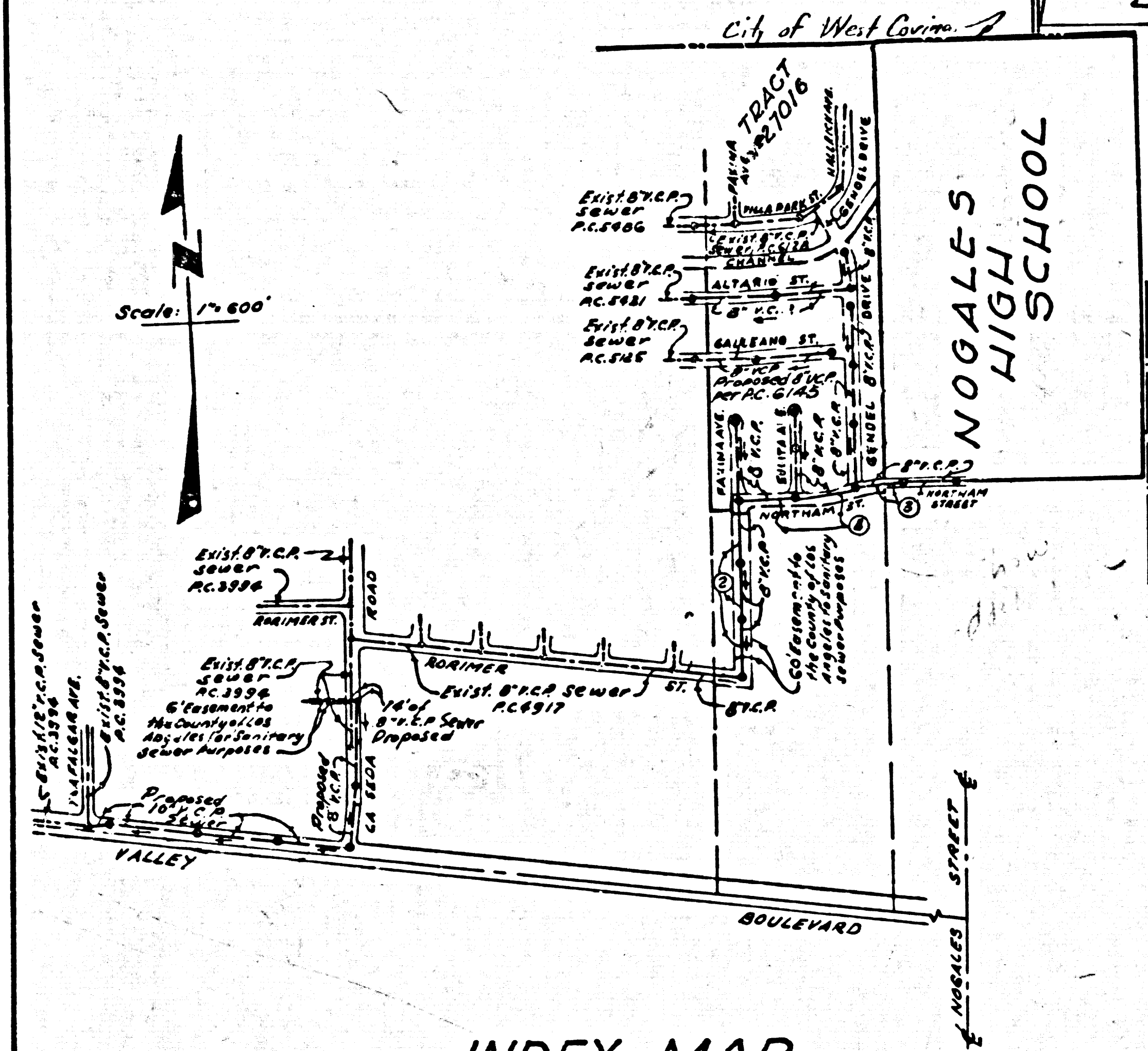
PUENTE BLDG. DIST. NO. 2

PROFILE ALIGNMENT AND GRADE OF SANITARY SEWERS TO BE CONSTRUCTED IN
 P.C. 6257 PAGE 1
 J.N. 0358.44

NOGALES HIGH SCHOOL
 PRIVATE CONTRACT NO. 6257

W.S. 38
 2 SHEETS; 4 PAGES
 SCALE: VERT. 1" = 4'
 HORIZ. 1" = 40'
 JUNE 1, 1962
 PREPARED IN THE OFFICES OF
 PARAMOUNT ENGINEERING COMPANY
 2811 SEVERLY BOULEVARD
 LOS ANGELES, CALIFORNIA
 REG. C. E. NO. 12955
 FOR LEGEND SEE PLAN NO. S-A-64

- NOTES:
- PROVIDE STAKES ON THE PROPERTY LINE OR PROPERTY LINES PRODUCED AT RIGHT ANGLES TO THE SEWER LINE AT THE CENTER LINE OF EACH MANHOLE.
 - NO REPRESENTATIVE OF THE COUNTY ENGINEER WILL SURVEY OR LAY OUT ANY PORTION OF THE WORK.
 - THE OWNER OR HIS AUTHORIZED REPRESENTATIVE SHALL FURNISH THE COUNTY ENGINEER WITH GRADE SHEETS AND STATIONING FOR ALL HOUSE LATERALS AND BRANCHES AND SHALL PROVIDE STAKES FOR THEM AT THEIR PROPER LOCATIONS WITH STATIONING PLAINLY MARKED. ANY CHANGE IN LOCATION SHALL BE REQUESTED IN WRITING BY THE OWNER OR HIS REPRESENTATIVE.
 - THE PRIVATE ENGINEER SHALL FURNISH THE HOUSE LATERAL DEPTH AT THE PROPERTY LINE BELOW THE TOP OF CURB ELEVATION FOR EACH HOUSE LATERAL ON THE GRADE SHEET.
 - NO REVISIONS SHALL BE MADE IN THESE PLANS WITHOUT THE APPROVAL OF THE COUNTY ENGINEER.
 - USE STANDARD MANHOLE FRAMES AND COVERS 3-117.
 - USE EXTRA STRENGTH PIPE, ALL PIPE STANDARD DEPTH, EXCEPT AS NOTED.
 - USE CEMENT MORTAR OR MECHANICAL COMPRESSION JOINTS FOR ALL V.C.P. JOINTS IN MAIN LINE PER SPECS. SEC. 364-48.
 - RESURFACE ALL TRENCH WITHIN PAVED AREA TO MEET L.A. COUNTY ROAD DEPT. OR CALIF. STATE HIGHWAY REQUIREMENTS IN ACCORDANCE WITH PERMITS.
 - ENCASE FOUR FEET OF SEWER AT POINTS OF INTERFERENCE WITH POLES, CASE III, 5-173.
 - HOUSE LATERALS TO BE CONSTRUCTED WITH INVERTS AT PROPERTY LINE 6 FEET BELOW CURB GRADE.
 - ALL STRUCTURES SHALL BE BRICK SEWER STRUCTURES 6-104 PRECAST CONCRETE MANHOLES PER S-6-135 OR S-6-173 TO BE USED AS AN ALTERNATE IN LOCATIONS APPROVED BY THE COUNTY ENGINEER.
 - FOR ALLOWABLE LEAKAGE TEST USE FORMULA NO. 1, SEC. 34.
 - MANHOLE TOPS IN UNIMPROVED RIGHT-OF-WAY TO BE 8 INCHES ABOVE FINISHED GRADE.
 - THE CONTRACTOR SHALL NOTIFY THE CONSTRUCTION DIVISION BY TELEPHONE, MADISON 9497, BEFORE AT LEAST TWENTY-FOUR HOURS BEFORE STARTING ANY WORK UNDER THIS CONTRACT.
 - STANDARD SPECIFICATIONS DATED MAY 25, 1962, APPLY IN THE CONSTRUCTION OF THIS PROJECT.
 - USE MECHANICAL COMPRESSION JOINTS FOR ALL V.C.P. JOINTS IN HOUSE LATERALS PER SPECS. SEC. 364-48. PRELIMINARY GRADING TO BE COMPLETED IN SEWER ROW'S BEFORE CONSTRUCTION OF SEWER IS STARTED.



INDEX MAP
 NOGALES HIGH SCHOOL - P.C. 6257
 NOTE: Numbers in Circles indicate Page Numbers.

NO CONNECTIONS FOR THE DISPOSAL OF INDUSTRIAL WASTES SHALL BE MADE TO SEWERS SHOWN ON THESE DRAWINGS WITHOUT WRITTEN PERMISSION FROM THE CHIEF ENGINEER AND GENERAL MANAGER OF THE COUNTY SANITATION DISTRICTS.

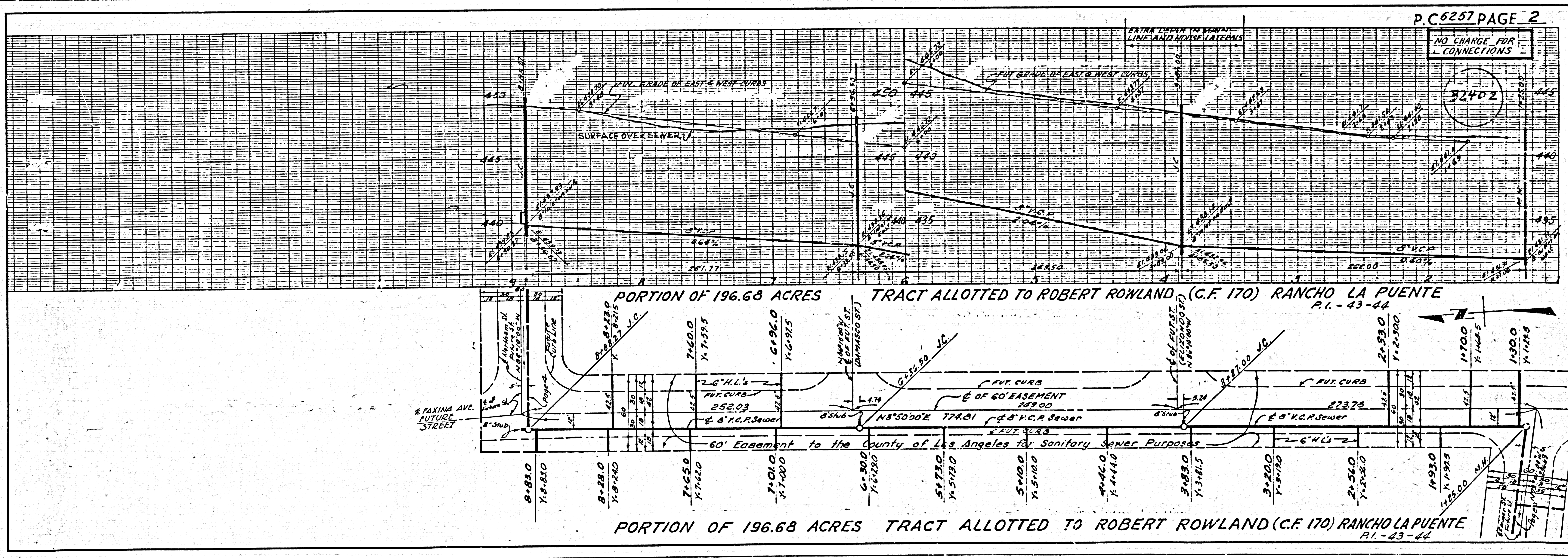
ISSUE NO PERMITS UNTIL R/W CLEARED

COLLECT CHARGES AS INDICATED

ISSUE NO PERMITS UNTIL P.C. 6145 IS ACCEPTED EXCEPT PERMITS FOR NOGALES HIGH SCHOOL

NOTE:
 GRADES TO WHICH THIS IMPROVEMENT IS TO BE CONSTRUCTED ARE SHOWN ON PLANS AND PROFILES. GRADE POINTS FOR TOP OF CURBS, CENTER LINE OF STREETS, OR CENTER LINE OF ALLEYS ARE SHOWN BY CIRCLES ON PROFILES. AT ALL POINTS BETWEEN DESIGNATED POINTS THE GRADE SHALL BE ESTABLISHED SO AS TO CONFORM TO A STRAIGHT LINE DRAWN BETWEEN SAID DESIGNATED POINTS.
 ELEVATIONS ARE IN FEET ABOVE U.S.C. & G.S. 55' LEVEL DATUM OF 1929.
 THIS DRAWING AND THE DATA HEREON ARE HEREBY MADE A PART OF THE SPECIFICATIONS.
 BEFORE WORK CAN BE STARTED THE CONTRACTOR MUST OBTAIN A PERMIT TO EXCAVATE IN COUNTY STREETS FROM THE L.A. COUNTY ROAD DEPT., DISTRICT OFFICE NO. 7 AND PAY A FEE TO THE COUNTY ENGINEER ROOM 370, COUNTY ENGINEER BLDG., 100 N. MAIN ST. SUFFICIENT TO COVER THE COST OF CONSTRUCTION INSPECTION AND RECORD PLANS.
 APPROVAL OF THIS PLAN BY THE COUNTY OF LOS ANGELES DOES NOT CONSTITUTE A REPRESENTATION AS TO THE ACCURACY OF THE LOCATION OR THE EXISTENCE OR NON-EXISTENCE OF ANY UNDERGROUND UTILITY PIPE OR STRUCTURE WITHIN THE LIMITS OF THIS PROJECT. THIS NOTE APPLIES TO ALL PAGES.
 IF WORK IS TO BE DONE IN A STATE HIGHWAY, A PERMIT MUST BE OBTAINED FROM THE STATE OF CALIFORNIA, DIVISION OF HIGHWAYS, 128 SOUTH SPRING STREET.

COUNTY OF LOS ANGELES, CALIFORNIA
 APPROVED, JOHN A. LAMBIE, COUNTY ENGINEER
 APPROVED, J.D. PARKHURST, CHIEF ENGINEER
 BY: Robert S. Khan, ASST. SANITATION ENGINEER
 BY: J. J. [Signature], OFFICE ENGINEER
 CHECKED BY: [Signature]
 OFFICE OF COUNTY ENGINEER, REG. C. E. NO. 2494
 SUBMITTED: W.C. [Signature] 7-2-62
 SAN DIMAS REGIONAL ENGINEER

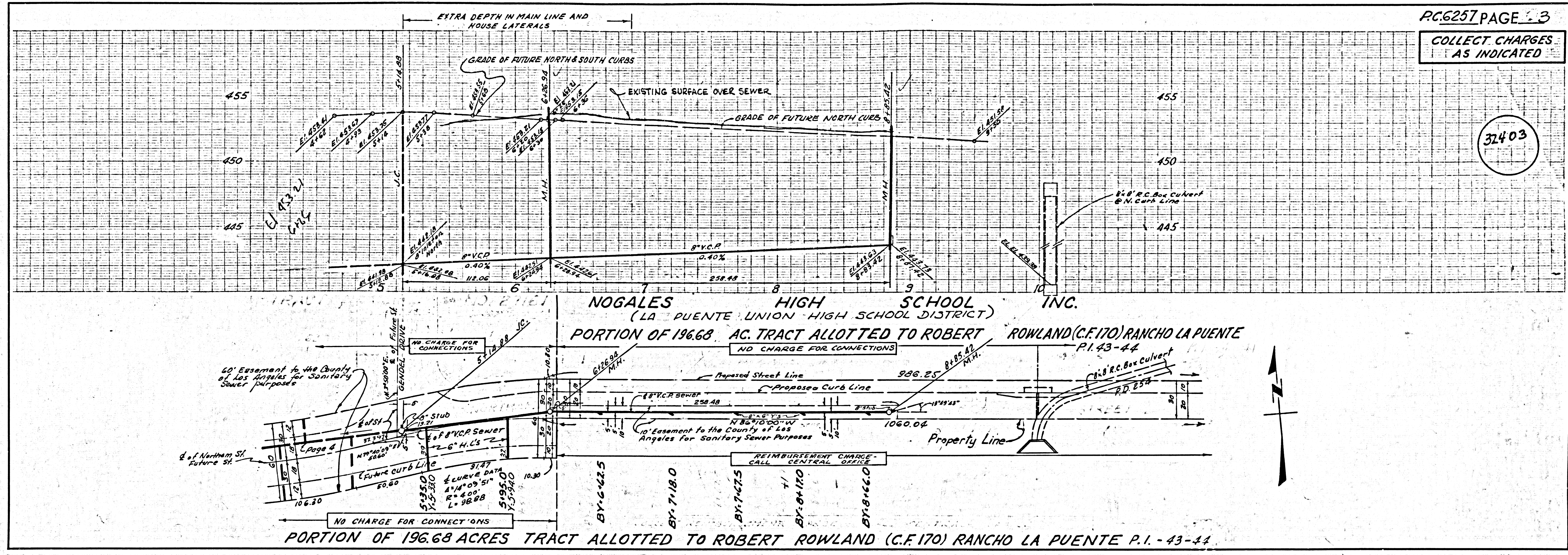


PORTION OF 196.68 ACRES TRACT ALLOTTED TO ROBERT ROWLAND (C.F. 170) RANCHO LA PUENTE P.I. - 43-44

PORTION OF 196.68 ACRES TRACT ALLOTTED TO ROBERT ROWLAND (C.F. 170) RANCHO LA PUENTE P.I. - 43-44

COLLECT CHARGES AS INDICATED

32403



32404

