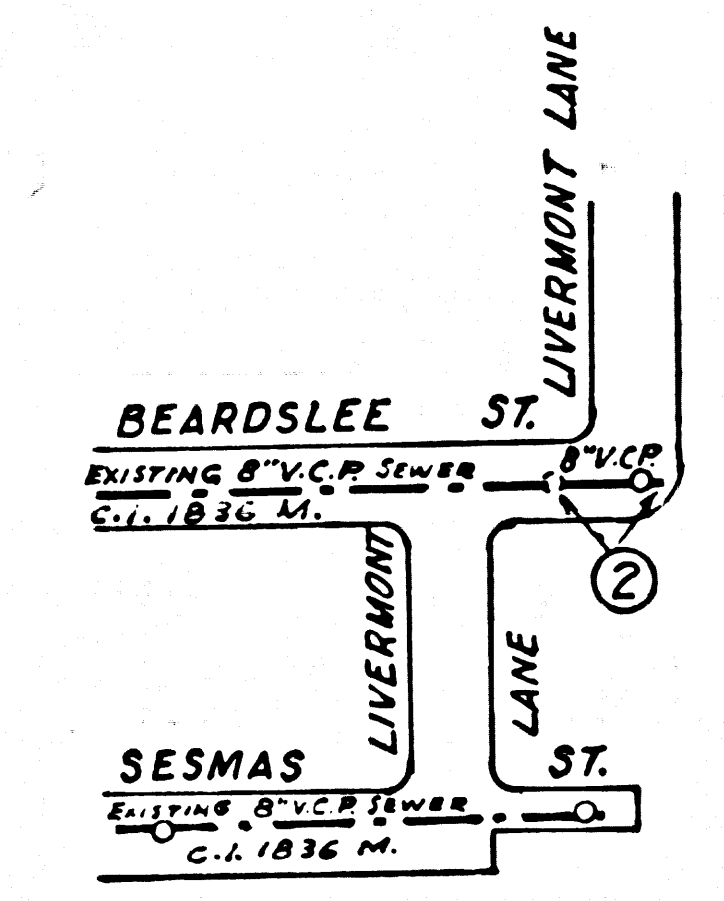


**CITY OF DUARTE BLDG. DIST. NO. 502**

**BEARDSLEE STREET**  
**PRIVATE CONTRACT NO. 6258**

W.S. 46-D,1  
 1 SHEET 2 PAGES  
 SCALE: VERT. 1"=4'  
 HORIZ. 1"=40'  
 JUNE, 1962  
 PREPARED IN THE OFFICES OF

**BROOKS & MILLER**  
 By: *Edith Brooks*  
 REG. C. E. NO. 4208  
 FOR LEGEND SEE PLAN NO. S-A-64



**KEY MAP**  
 SCALE: 1"=200'

- NOTES:**
1. PROVIDE STAKES ON THE PROPERTY LINE OR PROPERTY LINES PRODUCED AT RIGHT ANGLES TO THE SEWER LINE AT THE CENTER LINE OF EACH MANHOLE.
  2. NO REPRESENTATIVE OF THE CITY ENGINEER WILL SURVEY OR LAY OUT ANY PORTION OF THE WORK.
  3. THE OWNER OR HIS AUTHORIZED REPRESENTATIVE SHALL FURNISH THE CITY ENGINEER WITH GRADE SHEETS AND STATIONING FOR ALL HOUSE LATERALS AND Y BRANCHES AND SHALL PROVIDE STAKES FOR THEM AT THEIR PROPER LOCATIONS WITH STATIONING PLAINLY MARKED. ANY CHANGE IN LOCATION SHALL BE REQUESTED IN WRITING BY THE OWNER OR HIS REPRESENTATIVE.
  4. THE PRIVATE ENGINEER SHALL FURNISH THE HOUSE LATERAL DEPTH AT THE PROPERTY LINE BELOW THE TOP OF CURB ELEVATION FOR EACH HOUSE LATERAL ON THE GRADE SHEET.
  5. NO REVISIONS SHALL BE MADE IN THESE PLANS WITHOUT THE APPROVAL OF THE CITY ENGINEER.
  6. USE STANDARD MANHOLE FRAMES AND COVERS, S-111.
  7. USE EXTRA STRENGTH PIPE, ALL PIPE IS STANDARD DEPTH.
  8. USE CEMENT MORTAR OR MECHANICAL COMPRESSION JOINTS FOR ALL V.C.P. PER SEC. 36 & 44, IN MAIN LINE.
  9. RESURFACE ALL TRENCH WITHIN PAVED AREA TO MEET L.A. COUNTY ROAD DEPT. OR CALIF. STATE HIGHWAY REQUIREMENTS IN ACCORDANCE WITH PERMITS.
  10. ENCASE FOUR FEET OF SEWER AT POINTS OF INTERFERENCE WITH POLES, CASE III, S-172.
  11. HOUSE LATERALS TO BE CONSTRUCTED WITH WYES HORIZONTAL AND 1/4" RISE PER FT. TO PROPERTY LINE.
  12. MANHOLES SHALL BE BRICK SEWER STRUCTURES PER S-114. PRECAST CONCRETE MANHOLES PER S-4-155 AND S-4-175 MAY BE USED AS AN ALTERNATE IN LOCATIONS APPROVED BY THE CITY ENGINEER.
  13. FOR ALLOWABLE LEAKAGE TEST USE FORMULA NO. 1, SPECS. SEC. 54.
  14. MANHOLE TOPS IN IMPROVED RIGHTS-OF-WAY TO BE LEVEL WITH FINISHED GRADE.
  15. THE CONTRACTOR SHALL NOTIFY THE CONSTRUCTION DIVISION BY TELEPHONE, MADISON 9-4797, EXT. 81551 AT LEAST TWENTY-FOUR HOURS BEFORE STARTING ANY WORK UNDER THIS CONTRACT.
  16. USE MECHANICAL COMPRESSION JOINTS FOR ALL V.C.P. HOUSE LATERALS PER SPECS. SEC. 36.
  17. SPECIFICATIONS DATED MAY 25, 1962, APPLY IN THE CONSTRUCTION OF THIS PROJECT.

**B.M. KK-97** FB.1982-20  
**E.L.E. 557.383**  
 LIVERMONT LANE AND BEARDSLEE ST. N.W. CORNER. BOAT SPIKE IN CURB - 5' WEST OF WEST END OF CURB RETURN  
 BASE - 1952

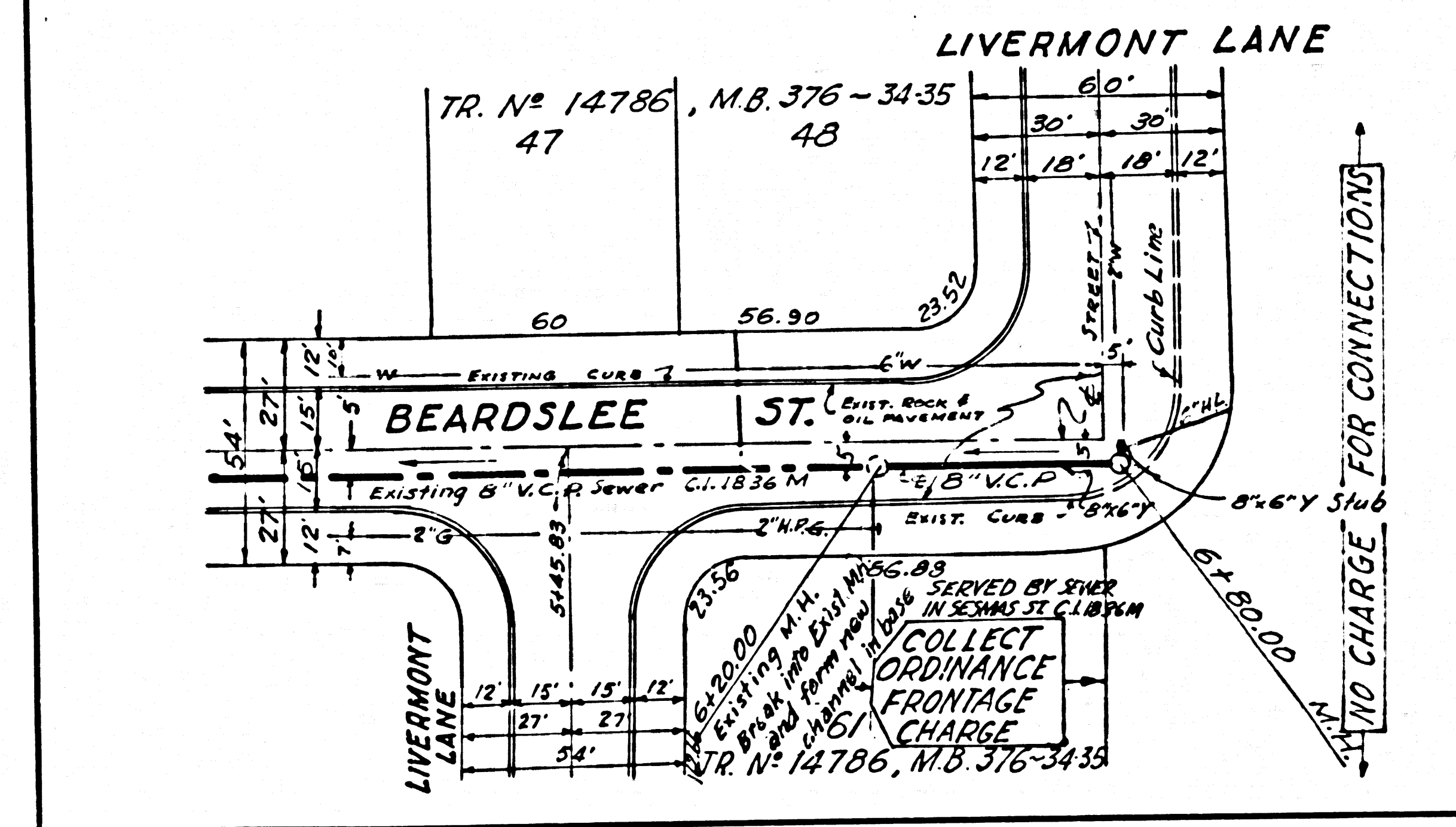
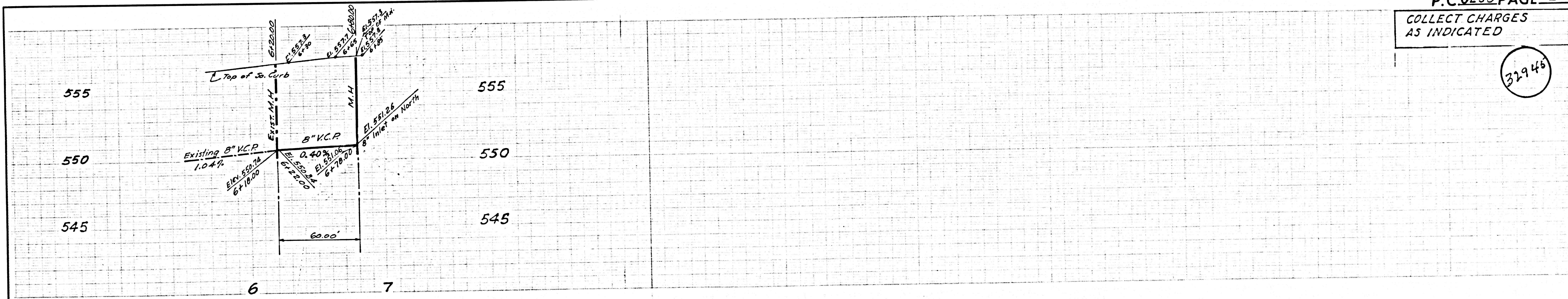
APPROVED *Edward L. Thompson* DATE 7-23-62  
 INDUSTRIAL WASTE DIVISION

**COLLECT CHARGES**  
 AS INDICATED  
*A.G. Albertson 7/6/62*

**NOTE:**  
 GRADES TO WHICH THIS IMPROVEMENT IS TO BE CONSTRUCTED ARE SHOWN ON PLANS AND PROFILES. GRADE POINTS FOR TOP OF CURBS, CENTER LINE OF STREETS, OR CENTER LINE OF ALLEYS ARE SHOWN BY CIRCLES ON PROFILES. AT ALL POINTS BETWEEN DESIGNATED POINTS THE GRADE SHALL BE ESTABLISHED SO AS TO CONFORM TO A STRAIGHT LINE DRAWN BETWEEN SAID DESIGNATED POINTS.  
 ELEVATIONS ARE IN FEET ABOVE U.S.C. & G.S. SEA LEVEL DATUM OF 1929.  
 THIS DRAWING AND THE DATA HEREON ARE HEREBY MADE A PART OF THE SPECIFICATIONS.  
 WORK SHALL BE CONSTRUCTED ACCORDING TO SPECIFICATIONS ON FILE IN THE OFFICE OF THE CITY ENGINEER AND SHALL BE PROSECUTED ONLY IN THE PRESENCE OF THE CITY ENGINEER.  
 BEFORE WORK CAN BE STARTED THE CONTRACTOR MUST OBTAIN A PERMIT TO EXCAVATE IN CITY STREETS FROM THE L.A. COUNTY ROAD DEPT., DISTRICT OFFICE NO. 1, AND MAKE A DEPOSIT WITH THE COUNTY ENGINEER, ROOM CITY ENGINEER, 1634 & THIRD ST. DUARTE, SUFFICIENT TO COVER THE COST OF CONSTRUCTION INSPECTION AND RECORD PLANS.  
 APPROVAL OF THIS PLAN BY THE CITY OF DUARTE DOES NOT CONSTITUTE A REPRESENTATION AS TO THE ACCURACY OF THE LOCATION OF OR THE EXISTENCE OR NON-EXISTENCE OF ANY UNDERGROUND UTILITY PIPE, OR STRUCTURE WITHIN THE LIMITS OF THIS PROJECT. THIS NOTE APPLIES TO ALL PAGES.  
 IF WORK IS TO BE DONE IN A STATE HIGHWAY, A PERMIT MUST BE OBTAINED FROM THE STATE OF CALIFORNIA, DIVISION OF HIGHWAYS, 120 SOUTH SPRING STREET.

**CITY OF DUARTE, CALIFORNIA**  
 APPROVED, JOHN A. LAMBIE, CITY ENGINEER APPROVED, JOHN A. PARKHURST, CHIEF ENGINEER  
 CO. SAN. DIST. NO. 22  
 BY *E.H. Hughes* SANITATION ENGINEER BY *R.P. Brown* OFFICE ENGINEER  
 CHECKED BY *S.K. Under* 7-6-62  
 OFFICE OF CITY ENGINEER, REG. C. E. NO. 3496  
 SUBMITTED *N.P. Brannan*  
 SAN GABRIEL VALLEY REGIONAL ENGINEER

NO CONNECTIONS FOR THE DISPOSAL OF INDUSTRIAL WASTES SHALL BE MADE TO SEWERS SHOWN ON THESE DRAWINGS WITHOUT WRITTEN PERMISSION FROM THE CHIEF ENGINEER AND GENERAL MANAGER OF THE COUNTY SANITATION DISTRICTS.



**LOT 11**  
 SEC. 29, T-1-N, R-10-W, SUBDIVISION OF RANCHO AZUSA DE DUARTE  
 M.R. 6 ~ 80-82