

**DOUBLE SCALE**  
**MONTROSE BLDG. DIST. NO. 3-1**

PROFILE ALIGNMENT AND GRADE OF **P.C. 6266**  
**SANITARY SEWERS PAGE 1**  
TO BE CONSTRUCTED IN **J.N. 0358.48**

**R/W. IN**  
**TRACT NO. 10589**  
**PRIVATE CONTRACT NO. 6266**

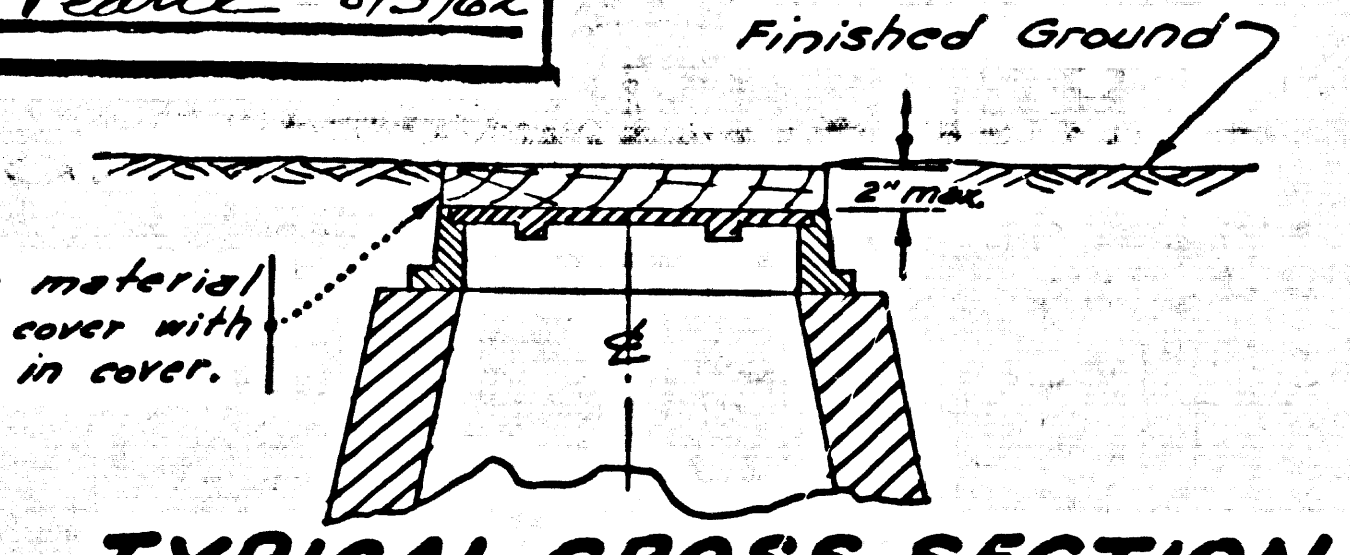
W.S. 838-51  
4 SHEETS; 7 PAGES

SCALE: VERT. 1"=8'  
HORIZ. 1"=40'  
JUNE 20, 1962  
PREPARED IN THE OFFICES OF  
Development Consultants, Inc.  
ENGINEERING DIVISION  
1001 E. ...  
By *[Signature]*  
REG. C. E. NO. 9553

32892

- NOTES:**
1. PROVIDE STAKES ON THE PROPERTY LINE OR PROPERTY LINES PRODUCED AT RIGHT ANGLES TO THE SEWER LINE AT THE CENTER LINE OF EACH MANHOLE.
  2. NO REPRESENTATIVE OF THE COUNTY ENGINEER WILL SURVEY OR LAY OUT ANY PORTION OF THE WORK.
  3. THE OWNER OR HIS AUTHORIZED REPRESENTATIVE SHALL FURNISH THE COUNTY ENGINEER WITH GRADE SHEETS AND STATIONING FOR ALL HOUSE LATERALS AND Y BRANCHES AND SHALL PROVIDE STAKES FOR THEM AT THEIR PROPER LOCATIONS WITH STATIONING PLAINLY MARKED. ANY CHANGE IN LOCATION SHALL BE REQUESTED IN WRITING BY THE OWNER OR HIS REPRESENTATIVE.
  4. THE PRIVATE ENGINEER SHALL FURNISH THE HOUSE LATERAL DEPTH AT THE PROPERTY LINE BELOW THE TOP OF CURB, ELEVATION FOR EACH HOUSE LATERAL ON THE GRADE SHEET.
  5. NO REVISIONS SHALL BE MADE IN THESE PLANS WITHOUT THE APPROVAL OF THE COUNTY ENGINEER.
  6. USE STANDARD MANHOLE FRAMES AND COVERS, S-111, EXCEPT AS NOTED.
  7. USE EXTRA STRENGTH PIPE; ALL PIPE SHALL BE STANDARD DEPTH EXCEPT AS NOTED.
  8. USE MECHANICAL COMPRESSION JOINTS FOR ALL V.C.P. IN MAIN LINE PER SPEC'S, SECS. 4 & 148.
  9. RESURFACE ALL TRENCH WITHIN PAVED AREA TO MEET L.A. COUNTY ROAD DEPT. OR CALIF. STATE HIGHWAY REQUIREMENTS IN ACCORDANCE WITH PERMITS.
  10. ENCASE FOUR FEET OF SEWER AT POINTS OF INTERFERENCE WITH POLES, CASE III, S-112.
  11. HOUSE LATERALS TO BE CONSTRUCTED WITH INVERTS AT PROPERTY LINE 6 FEET BELOW CURB GRADE EXCEPT AS NOTED.
  12. MANHOLES SHALL BE BRICK SEWER STRUCTURES PER S-111-112, EXCEPT AS NOTED. PRECAST CONCRETE MANHOLES PER S-111-112 OR S-112-113 MAY BE USED AS AN ALTERNATE IN LOCATIONS APPROVED BY THE COUNTY ENGINEER.
  13. FOR ALLOWABLE LEAKAGE TEST USE FORMULA NO. ... SPEC'S, SEC. 14.
  14. MANHOLE TOPS IN UNIMPROVED RIGHTS-OF-WAY TO BE SIX INCHES ABOVE FINISHED GRADE, UNLESS OTHERWISE NOTED.
  15. THE CONTRACTOR SHALL NOTIFY THE CONSTRUCTION DIVISION BY TELEPHONE, MADISON 3-4111, EXT. 8151, AT LEAST TWENTY-FOUR HOURS BEFORE STARTING ANY WORK UNDER THIS CONTRACT.
  16. STANDARD SPECIFICATIONS DATED MAY 25, 1962 APPLY IN THE CONSTRUCTION OF THIS PROJECT.
  17. USE MECHANICAL COMPRESSION JOINTS FOR ALL 10" HOUSE LATERALS PER SPEC'S, SEC. 36.
  18. ALL HOUSE LATERALS OF MAIN LINE SEWERS CROSSING STORM DRAINS NOT OTHERWISE ENCASED, SHALL BE ENCASED PER S-111-112, CASE III.

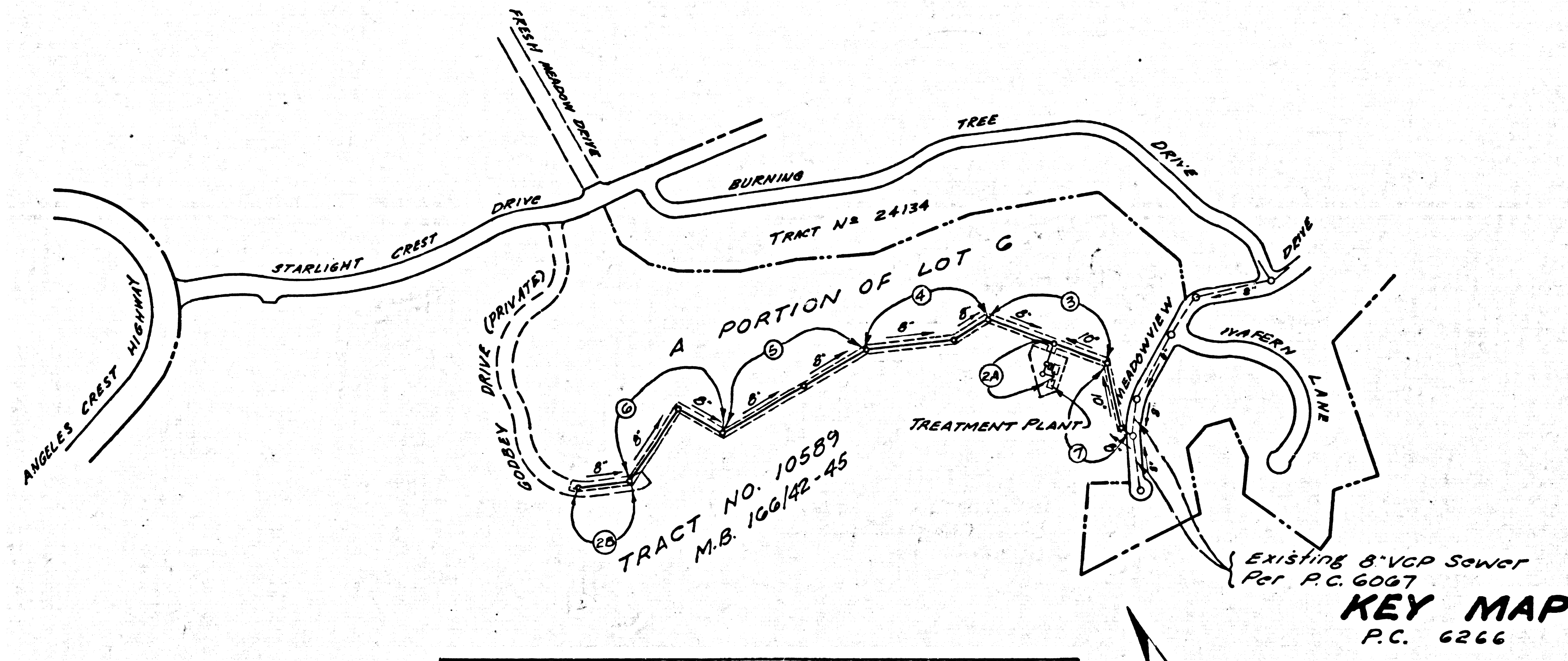
**NO CHARGE FOR CONNECTIONS**  
*R. P. ... 8/3/62*



**TYPICAL CROSS SECTION OF SPECIAL MANHOLE TOP**  
TYPICAL OF MANHOLES @ STATIONS 1+60.31; 4+08.34; 7+29.47; APPROVED: *[Signature]* DATE: 8-2-62.  
3+84.51; 2+08.17; 5+41.99

COUNTY OF LOS ANGELES, CALIFORNIA  
APPROVED, JOHN A. LAMBE, COUNTY ENGINEER APPROVED, JOHN D. PARKHURST, CHIEF ENGINEER  
CO. SAN. DIST. NO. 23  
BY *[Signature]* BY *[Signature]*  
ASST. SANITATION ENGINEER OFFICE ENGINEER  
CHECKED BY *[Signature]* 8-9-62  
OFFICE OF COUNTY ENGINEER, R.G.C. NO. 10943  
SUBMITTED: *[Signature]*  
SAN GABRIEL VALLEY REGIONAL ENGINEER

B.M. SY 4921 - L & CORN. N.W. N.E.R. AT W. END  
ARCH BRIDGE NO. 53-61 ON ANGELES CREST HWY  
3360' E. HARTER LANE, L.A. CANADA - 1965 Q'VAR  
ELEV. 1717.718

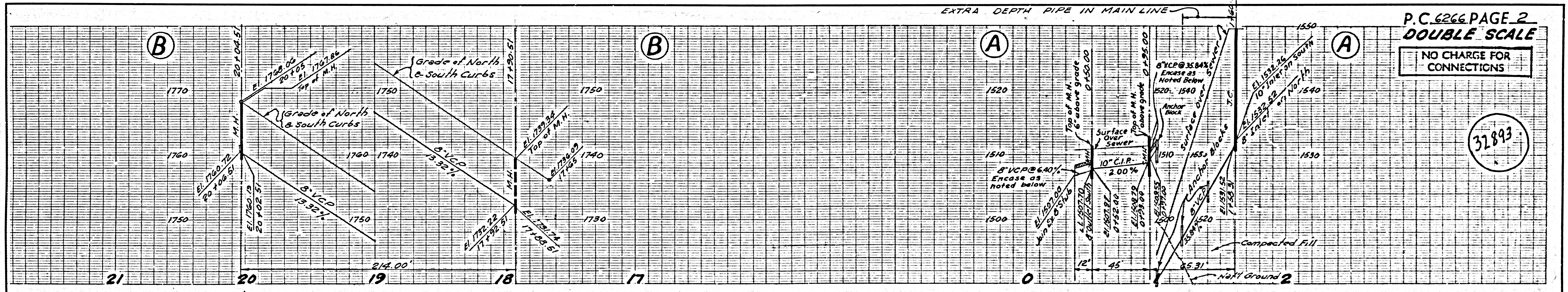


**ISSUE NO PERMITS UNTIL R/W CLEARED. CHECK WITH SAN. DIV.**

**KEY MAP**  
P.C. 6266  
Scale: 1"=400'

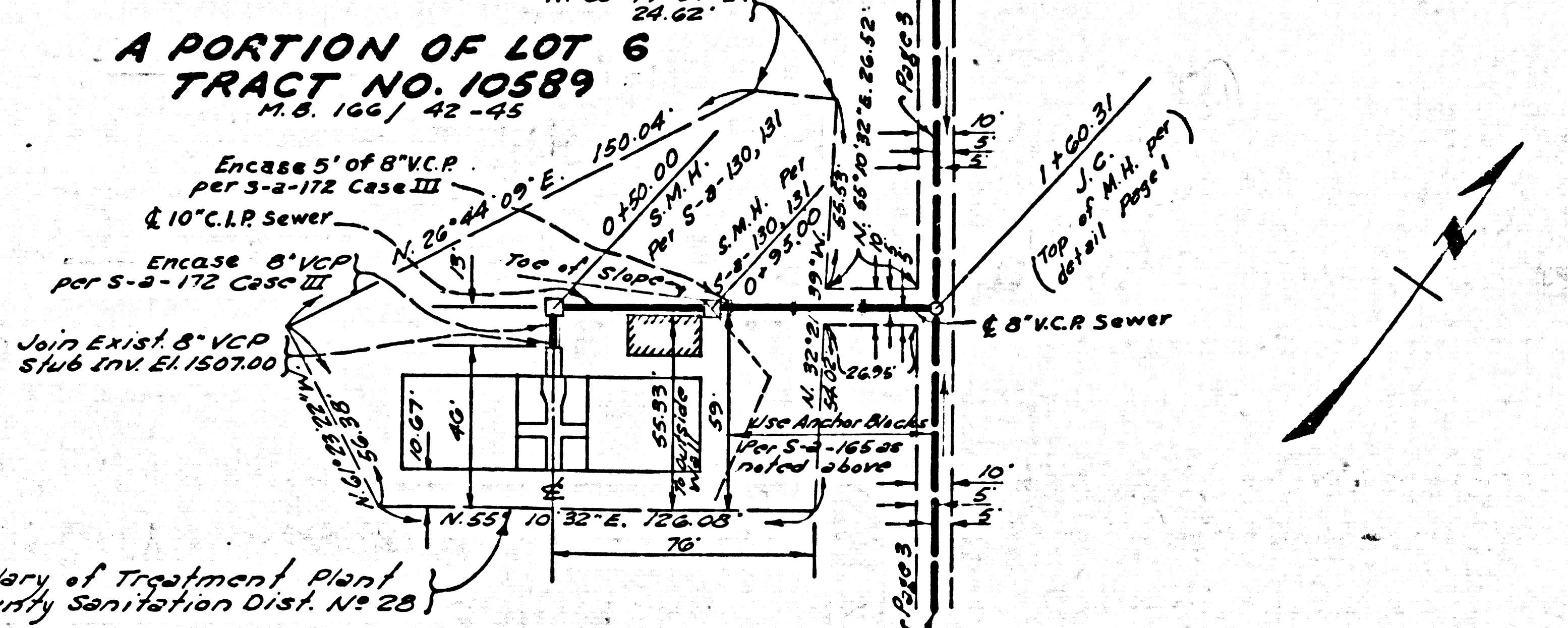
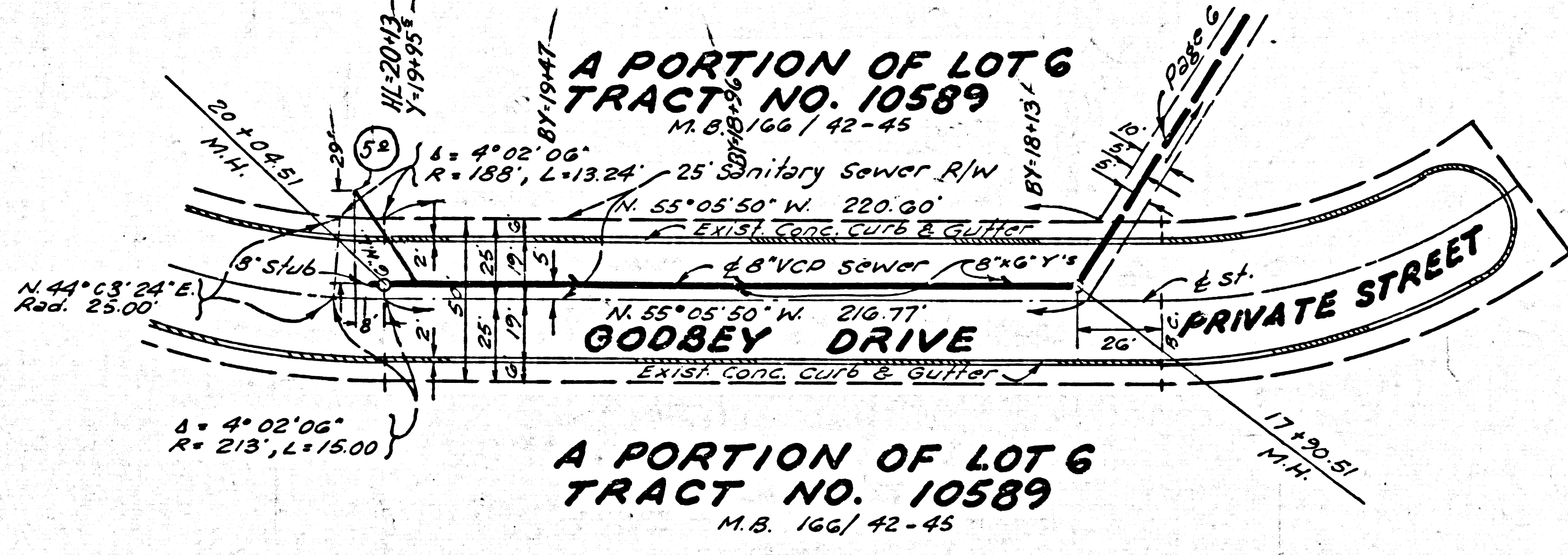
Note: Numbers in circles indicate page numbers.

NO CONNECTIONS FOR THE DISPOSAL OF INDUSTRIAL WASTES SHALL BE MADE TO SEWERS SHOWN ON THESE DRAWINGS WITHOUT WRITTEN PERMISSION FROM THE CHIEF ENGINEER AND GENERAL MANAGER OF THE COUNTY SANITATION DISTRICT.

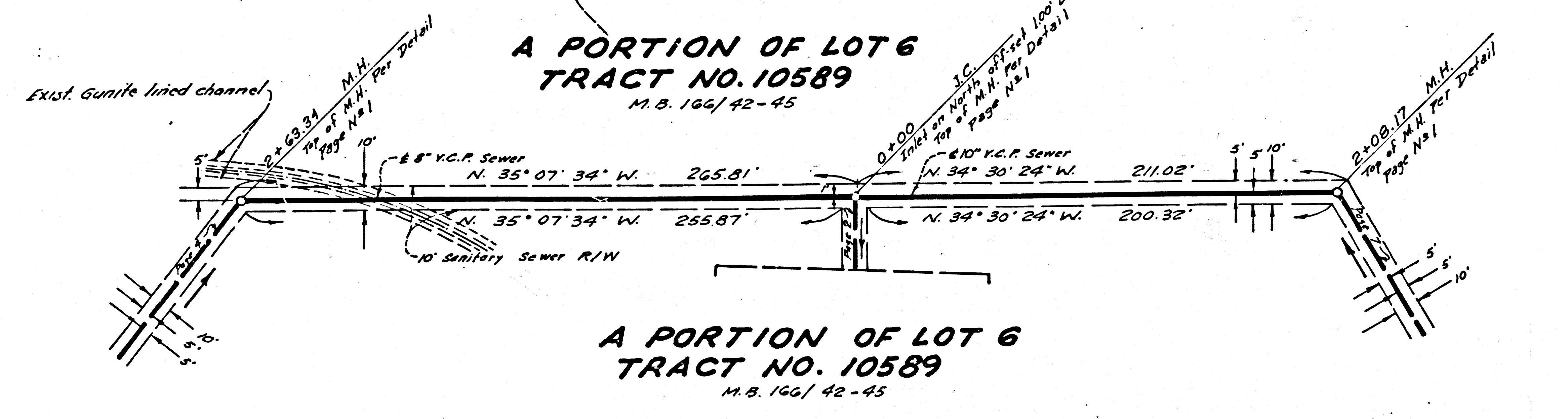
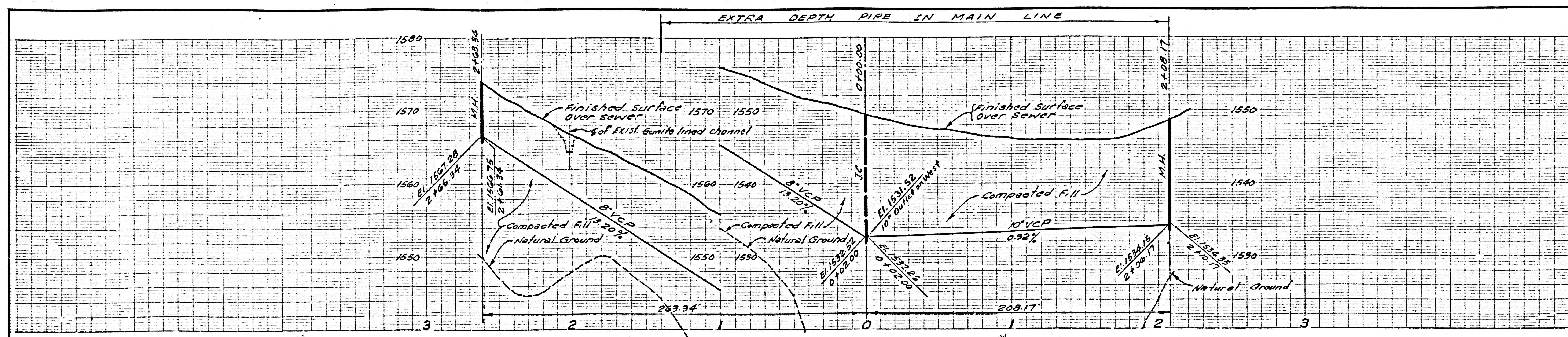


**P.C. 6266 PAGE 2**  
**DOUBLE SCALE**  
**NO CHARGE FOR CONNECTIONS**

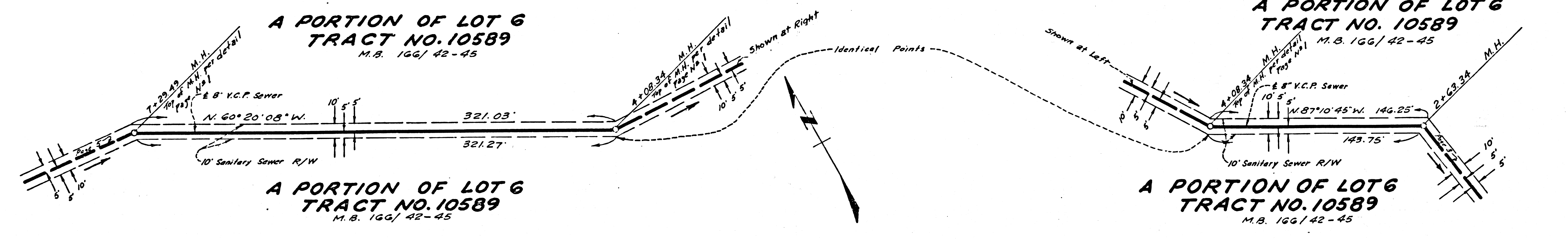
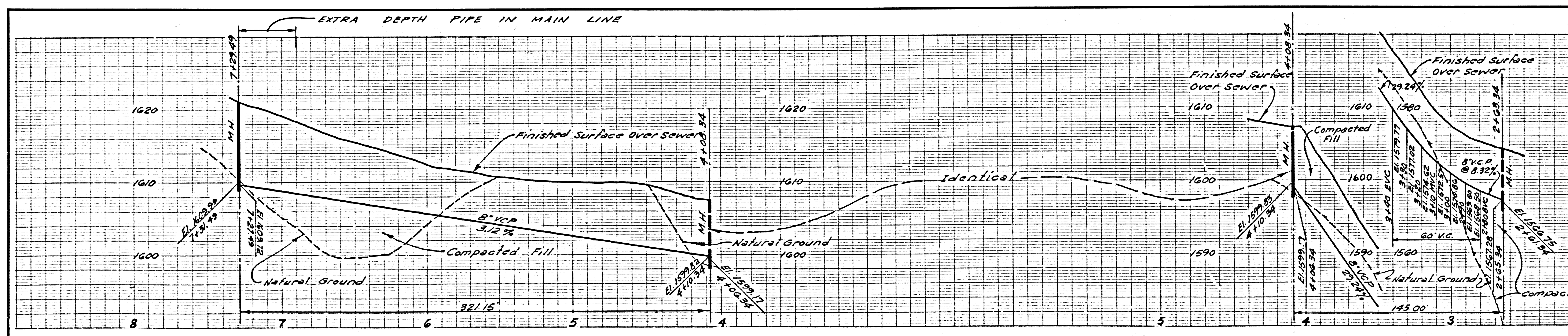
32893



32894

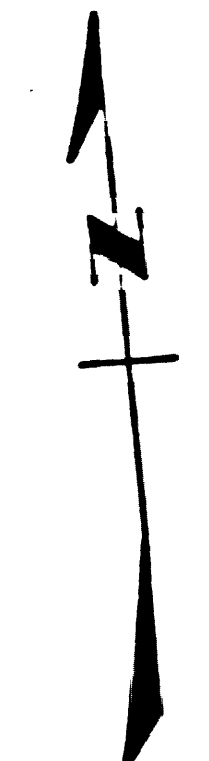
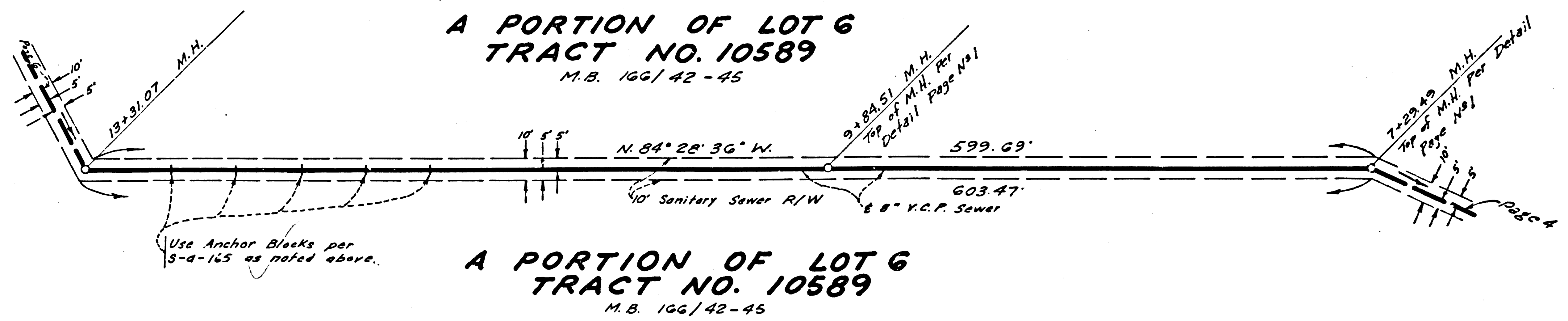
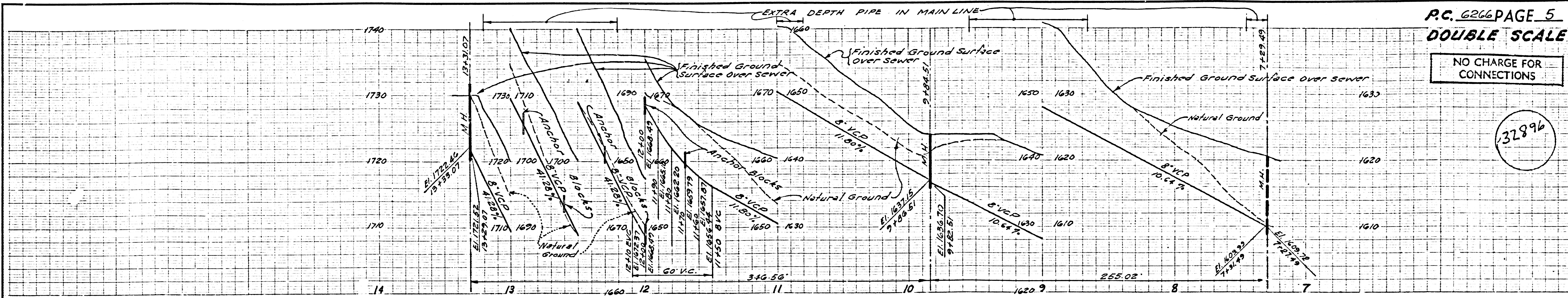


32895



NO CHARGE FOR CONNECTIONS

32896



NO CHARGE FOR CONNECTIONS

32897

