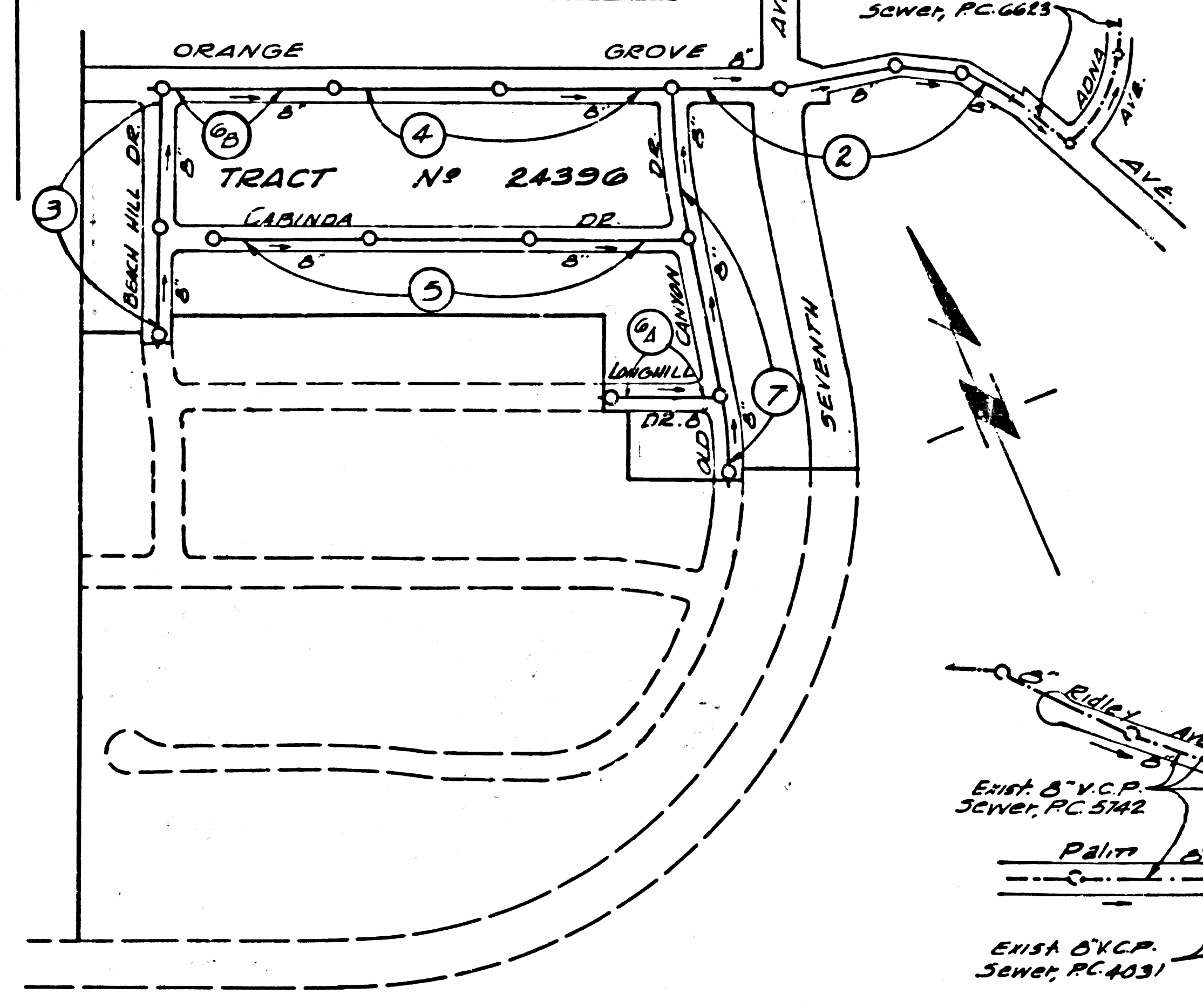
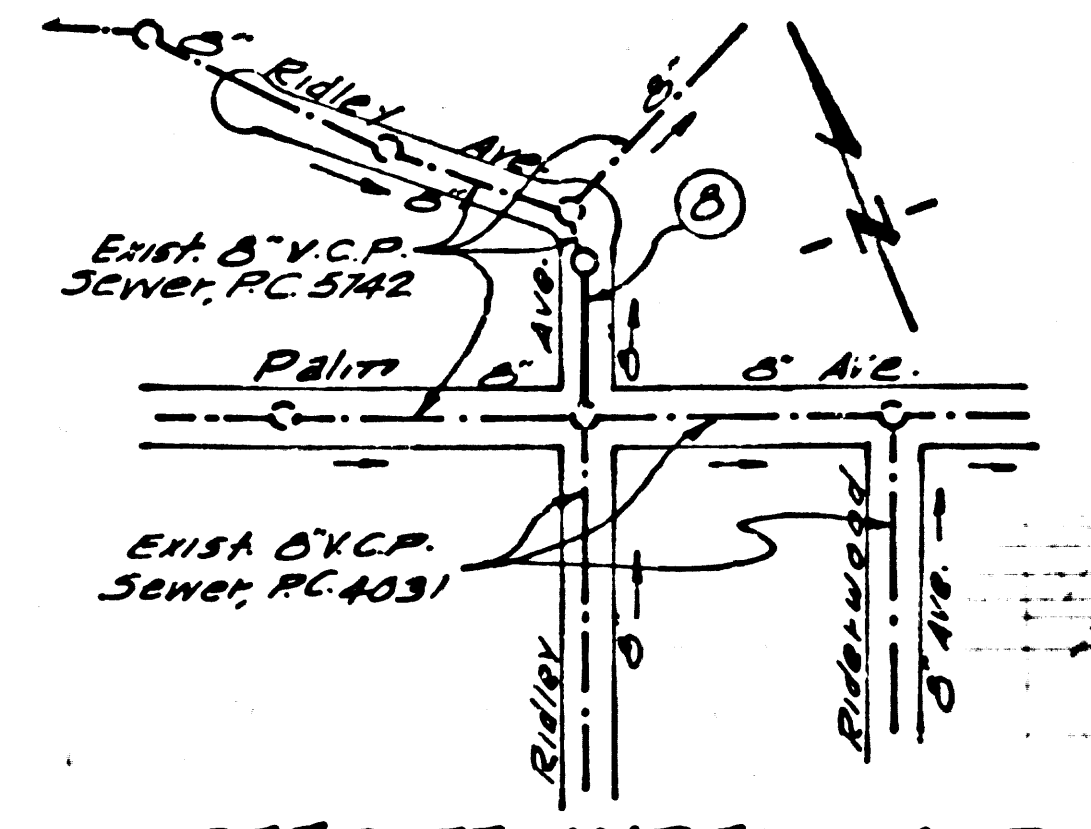


B.M. 56 1596 ELEV. 502.246
 Ref. Dept. B.M. 729 in Cont.
 Ref. Map of Pinalo Co. 30
 of Orange Grove Ave. E. S. 1/4
 of 24 Ave. S. 43' 50" E 22' E 1/4 Int.
 WHITTIER QUAD. 19 1960



INDEX MAP
 TRACT No. 24396
 P.C. 6272
 SCALE: 1" = 300'



OFFSITE-INDEX MAP
 SCALE: 1" = 300'

REVISION # 2
 Revised Alignment between
 Sta. 445.72 & 3+33.13
 Page 2
 APPROVED: *[Signature]* Fee 92/65
 OFFICE OF CO. ENGINEER

REVISION
 Raised Sewer Main, &
 Reloc. M.H.'s on Page 5
 APPROVED: *[Signature]* Fee 83/65
 OFFICE OF COUNTY ENGINEER

DOUBLE VERTICAL SCALE
LA PUENTE BLDG. DIST. NO. 2

PROFILE ALIGNMENT AND GRADE OF
SANITARY SEWERS P.C. 6272
 PAGE 1

TRACT No. 24396
 PRIVATE CONTRACT NO. 6272

W.S. 37
 4 SHEETS, 8 PAGES
 SCALE: VERT. 1" = 6'
 HORIZ. 1" = 40' MAY 1965

PREPARED IN THE OFFICES OF
KEMMERER ENGR. CO. INC.
 145 N. PAINTER AVE. WHITTIER, CAL.
 BY: *[Signature]*
 REG. C. E. NO. 11349

37469

FOR LEGEND SEE PLAN NO. S-1

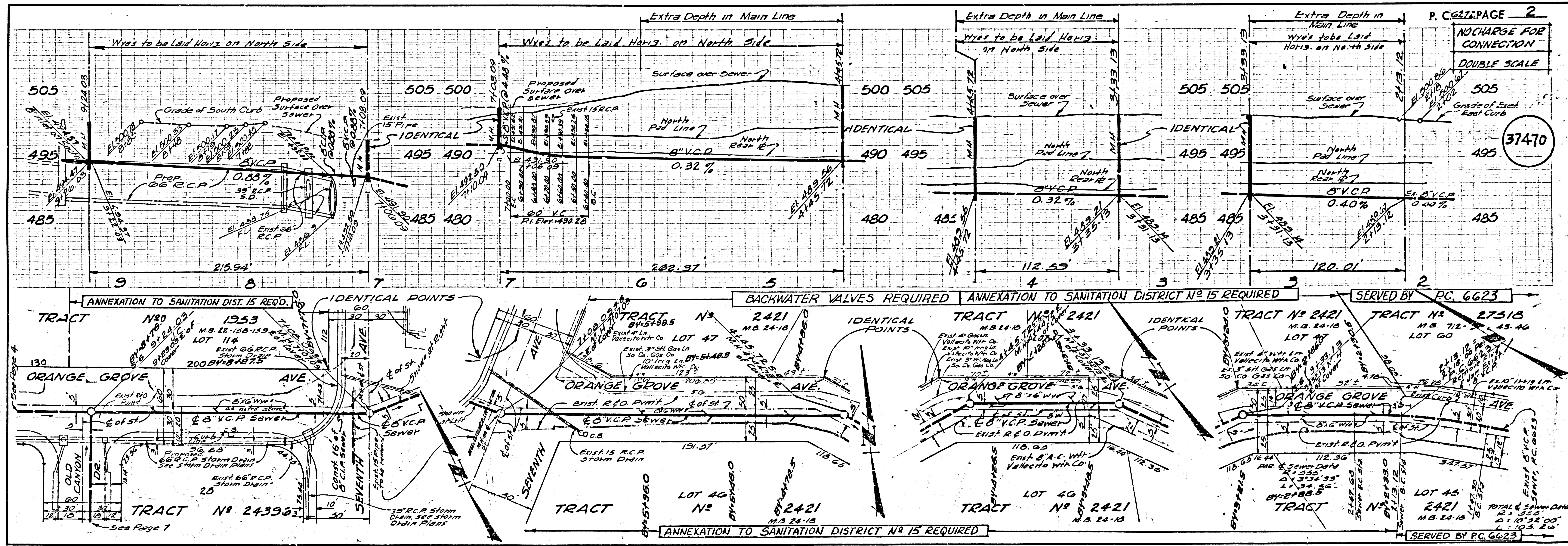
- NOTE:
 1. PROVIDE STAKES ON THE PROPERTY LINE OR PROPERTY LINES PRODUCED AT RIGHT ANGLES TO THE SEWER LINE AT THE CENTER LINE OF EACH MANHOLE.
 2. NO REPRESENTATIVE OF THE COUNTY ENGINEER WILL SURVEY OR LAY OUT ANY PORTION OF THE WORK.
 3. THE PRIVATE ENGINEER SHALL FURNISH THE COUNTY ENGINEER WITH GRADE SHEETS AND STATIONING FOR ALL HOUSE LATERALS AND Y BRANCHES AND SHALL PROVIDE STAKES FOR THEM AT THEIR PROPER LOCATIONS WITH STATIONING PLAINLY MARKED. ALL HOUSE LATERALS SHALL BE CONSTRUCTED IN A STRAIGHT ALIGNMENT AT RIGHT ANGLES FROM THE MAIN LINE SEWER EXCEPT AS SHOWN ON THE PLANS. HOUSE LATERALS FROM CHIMNEYS SHALL NOT HAVE AN ANGLE OF LESS THAN 45° WITH THE MAIN LINE SEWER. ANY CHANGE IN ALIGNMENT SHALL BE REQUESTED IN WRITING BY THE PRIVATE ENGINEER.
 4. THE PRIVATE ENGINEER SHALL FURNISH THE HOUSE LATERAL DEPTH AT THE PROPERTY LINE BELOW THE TOP OF CURB ELEVATION FOR EACH HOUSE LATERAL ON THE GRADE SHEET.
 5. NO REVISIONS SHALL BE MADE IN THESE PLANS WITHOUT THE APPROVAL OF THE COUNTY ENGINEER.
 6. THE CONTRACTOR SHALL NOTIFY THE CONSTRUCTION DIVISION BY TELEPHONE, MADISON 9-4747, EXT. 8151, AT LEAST TWENTY-FOUR HOURS BEFORE STARTING ANY WORK UNDER THIS CONTRACT.
 7. MANHOLES SHALL BE BRICK SEWER STRUCTURES PER S. 3 PRECAST CONCRETE MANHOLES PER S. 3 OR S. 4 MAY BE USED AS AN ALTERNATE IN LOCATIONS APPROVED BY THE COUNTY ENGINEER.
 8. USE STANDARD MANHOLE FRAMES AND COVERS, S. 15
 9. MANHOLES TO BE CONSTRUCTED TO THE DEPTH OF THE COVER OVER THE TOP OF THE MAIN LINE SEWER.
 10. USE EXTRA STRENGTH PIPE. ALL PIPE IS STANDARD DEPTH EXCEPT AS NOTED.
 11. USE EXTREME CARE TO MECHANICAL COMPRESSION JOINTS FOR ALL V.C.P. JOINTS PER S.P.C.'S, SECS. 34 & 48, 149
 12. WHERE EVER GROUND WATER IS ENCOUNTERED DURING THE CONSTRUCTION OF THE SEWER, THE V.C.P. JOINTS SHALL BE OF JOINT-UNPLANNED PER S.P.C.'S, SECS. 34 & 48, 149 MECHANICAL COMPRESSION JOINT PER S.P.C.'S, SECS. 34 & 48, 149
 13. IF A POWER POLE IS WITHIN THREE FEET OF THE SEWER, THE SEWER SHALL BE ENCASED, PER S. 23 TWO FEET ON EITHER SIDE FROM THE POINT OF INTERFERENCE.
 14. IF DURING THE COURSE OF CONSTRUCTION IT IS DETERMINED THAT THERE IS LESS THAN FOUR FEET OF COVER OVER THE TOP OF A MAIN LINE OR HOUSE LATERAL V.C.P. SEWER WHICH IS NOT INDICATED ON THE PLANS, THE PIPE SHALL BE ENCASED PER S. 23 UNLESS OTHERWISE APPROVED BY THE COUNTY ENGINEER.
 15. HOUSE LATERALS TO BE CONSTRUCTED WITH INVERTS AT PROPERTY LINE... FEET BELOW CURB GRADE EXCEPT AS NOTED.
 16. RESURFACE ALL TRENCHES WITHIN PAVED AREAS TO MEET L.A. COUNTY ROAD DEPT. OR CALIFORNIA STATE HIGHWAY REQUIREMENTS IN ACCORDANCE WITH PERMITS.
 17. FOR ALLOWABLE LEAKAGE TEST USE FORMULA NO. 2 PER S.P.C.'S, SEC. 24
 18. ALL STATE AND LOCAL TRENCH SAFETY ORDERS WILL BE RIGIDLY ENFORCED
 19. FIGURES IN CIRCLES AT ENDS OF HOUSE LATERALS INDICATE THE DEPTH OF HOUSE LATERALS INVERTS BELOW CURB GRADE AT THE PROPERTY LINE.
 20. INDICATES HOUSE LATERAL TO BE CONSTRUCTED WITH A RISE OF 1/8" PER FOOT TO PROPERTY LINE
 21. STATIONS IN CIRCLES INDICATE HOUSE LATERALS MUST NOT BE CONSTRUCTED UPSTREAM OF THAT STATION FOR THAT LOT.
 NO CONNECTIONS FOR THE DISPOSAL OF INDUSTRIAL WASTES SHALL BE MADE TO SEWERS SHOWN ON THESE DRAWINGS WITHOUT WRITTEN PERMISSION FROM THE CHIEF ENGINEER AND GENERAL MANAGER OF THE COUNTY SANITATION DISTRICTS.

COLLECT CHARGES AS INDICATED
[Signature] 5-6-65

NOTE:
 GRADES TO WHICH THIS IMPROVEMENT IS TO BE CONSTRUCTED ARE SHOWN ON PLANS AND PROFILES. GRADE POINTS FOR TOP OF CURBS, CENTER LINE OF STREETS, OR CENTER LINE OF ALLEYS ARE SHOWN BY CIRCLES ON PROFILES. AT ALL POINTS BETWEEN DESIGNATED POINTS THE GRADE SHALL BE ESTABLISHED SO AS TO CONFORM TO A STRAIGHT LINE DRAWN BETWEEN SAID DESIGNATED POINTS. ELEVATIONS ARE IN FEET ABOVE U.S.C. & G.S. SEA LEVEL DATUM OF 1929. THIS DRAWING AND THE DATA HEREON ARE HEREBY MADE A PART OF THE SPECIFICATIONS. WORK SHALL BE CONSTRUCTED ACCORDING TO STANDARD SPECIFICATIONS DATED MAY 23, 1965, ON FILE IN THE OFFICE OF THE COUNTY ENGINEER AND SHALL BE PROSECUTED ONLY IN THE PRESENCE OF THE COUNTY ENGINEER.
 BEFORE WORK CAN BE STARTED, THE CONTRACTOR MUST OBTAIN A PERMIT TO LOCATE IN COUNTY STREETS FROM THE L.A. COUNTY ROAD DEPT., DISTRICT OFFICE NO. 1, AND PAY A FEE TO THE COUNTY ENGINEER, ROOM 300, COUNTY ENGINEERING BUILDING, 108 WEST SECOND STREET OR SAN DIMAS REGIONAL OFFICE, SUFFICIENT TO COVER THE COST OF CONSTRUCTION INSPECTION AND RECORD PLANS.
 APPROVAL OF THIS PLAN BY THE COUNTY OF LOS ANGELES DOES NOT CONSTITUTE A REPRESENTATION AS TO THE ACCURACY OF THE LOCATION OF OR THE EXISTENCE OR NON-EXISTENCE OF ANY UNDERGROUND UTILITY PIPE, OR STRUCTURE WITHIN THE LIMITS OF THIS PROJECT. THIS NOTE APPLIES TO ALL PAGES.
 IF WORK IS TO BE DONE IN A STATE HIGHWAY, A PERMIT MUST BE OBTAINED FROM THE STATE OF CALIFORNIA, DIVISION OF HIGHWAYS, 120 SOUTH SPRING STREET, LOS ANGELES, CALIFORNIA.

COUNTY OF LOS ANGELES, CALIFORNIA
 JOHN A. LAMBIE, COUNTY ENGINEER
 APPROVED BY: *[Signature]* ASSISTANT SANITATION ENGINEER
 SUBMITTED BY: *[Signature]* SAN DIMAS REGIONAL ENGINEER
 CHECKED BY: *[Signature]* 6-17-65
 REG. C. E. NO. 11349

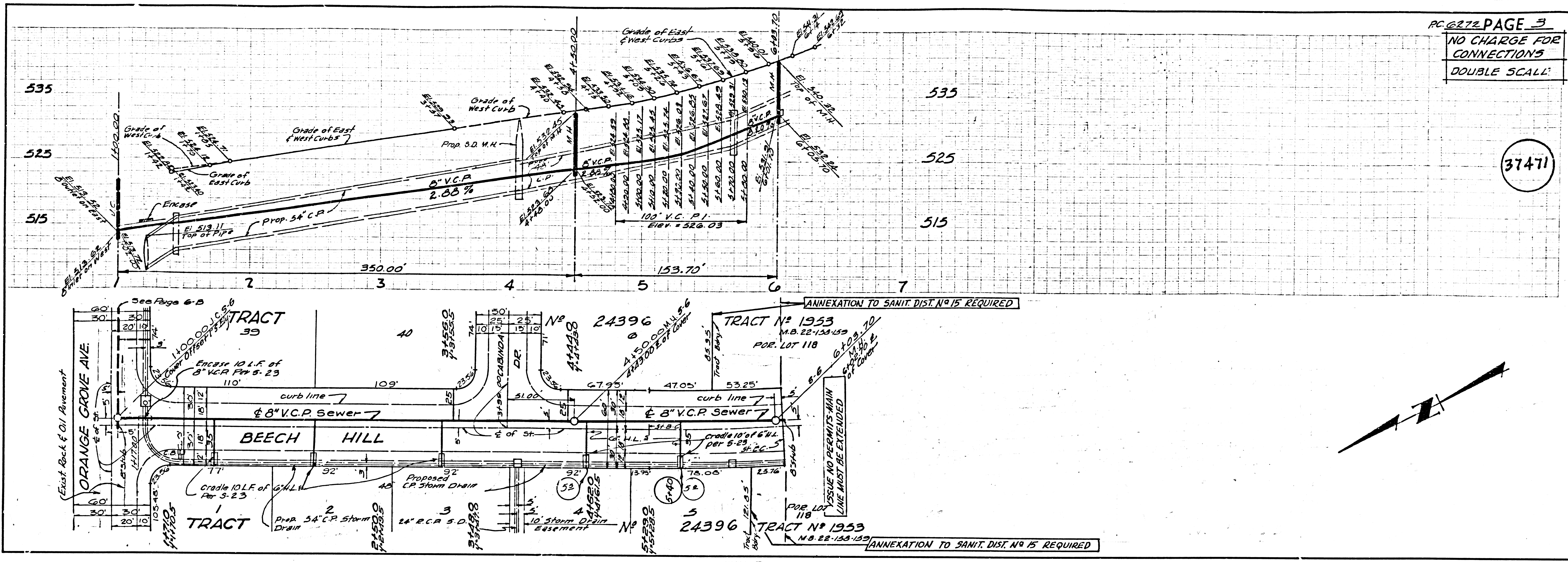
J.N. 0358.53



P.C. 6272 PAGE 2
 NO CHARGE FOR CONNECTION
 DOUBLE SCALE
 37470

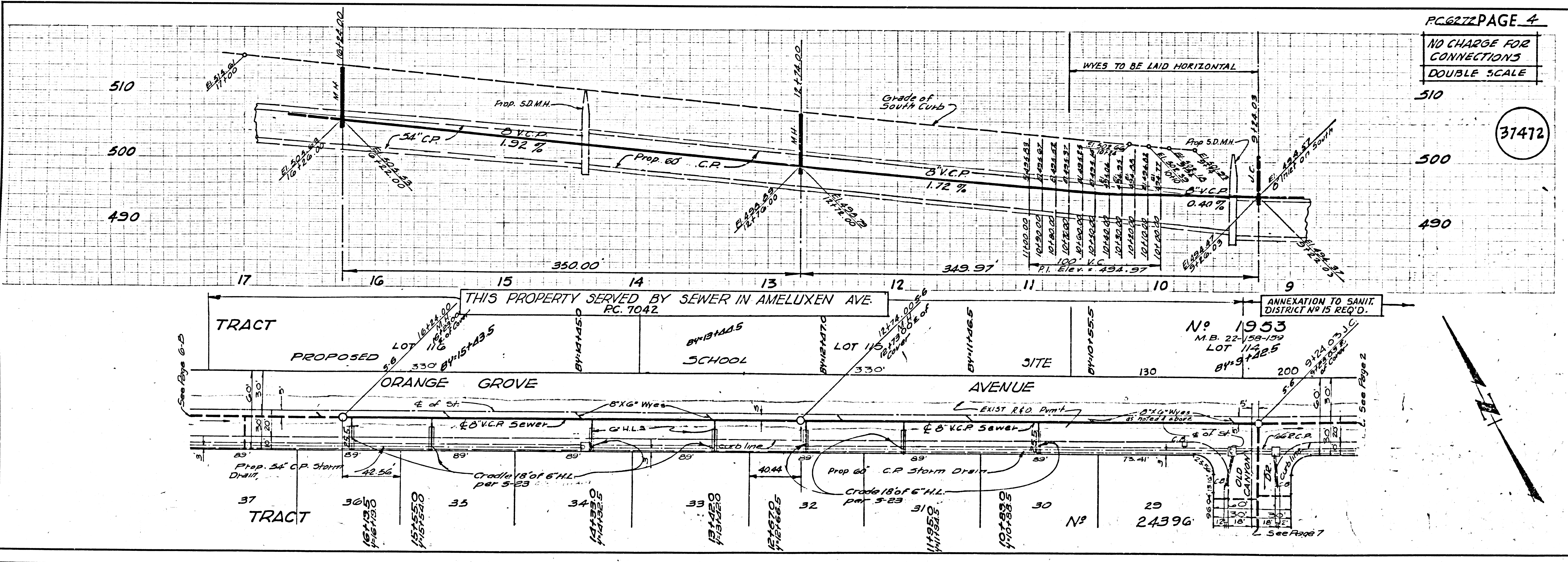
NO CHARGE FOR CONNECTIONS
DOUBLE SCALE

37471



NO CHARGE FOR CONNECTIONS
DOUBLE SCALE

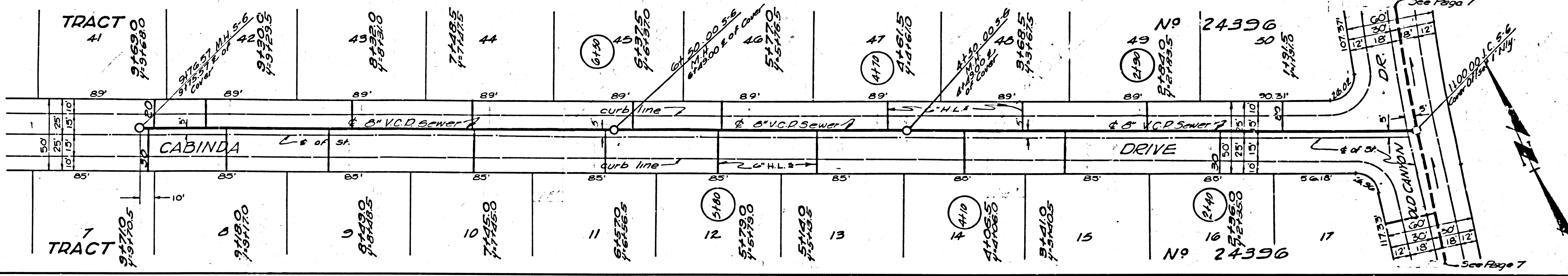
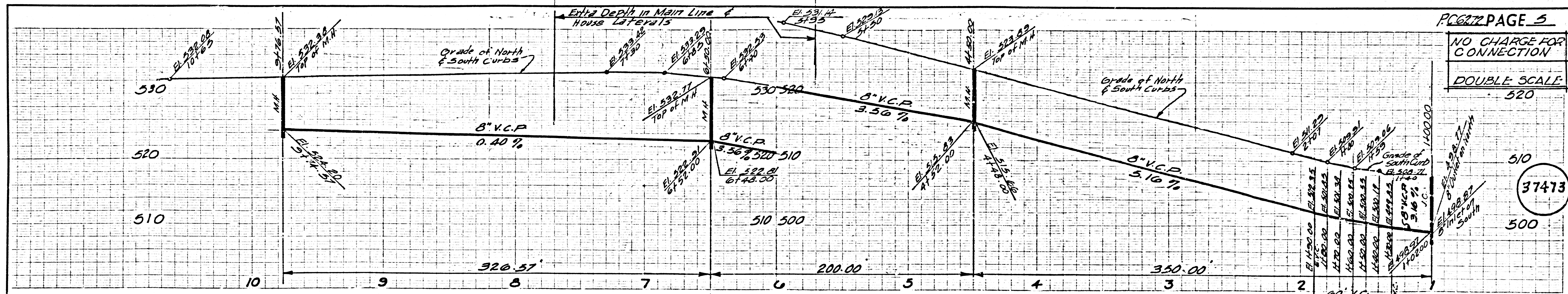
37472



NO CHARGE FOR CONNECTION

DOUBLE SCALE

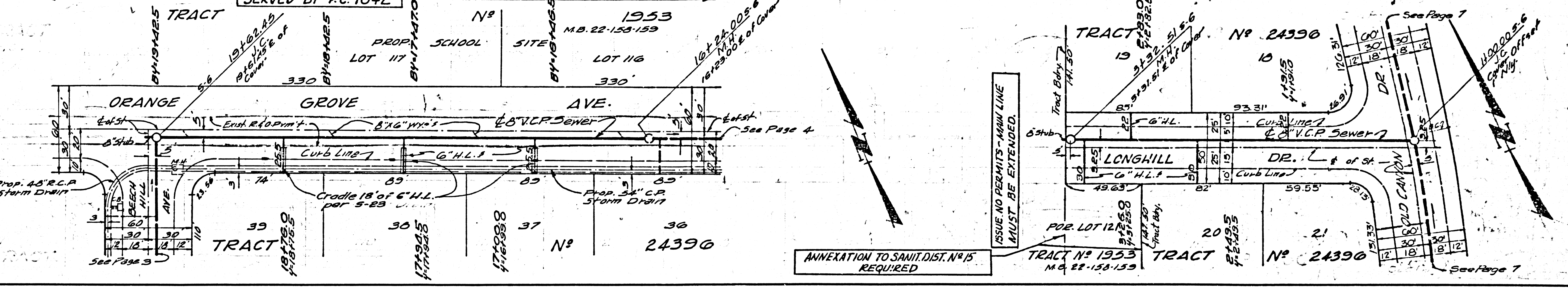
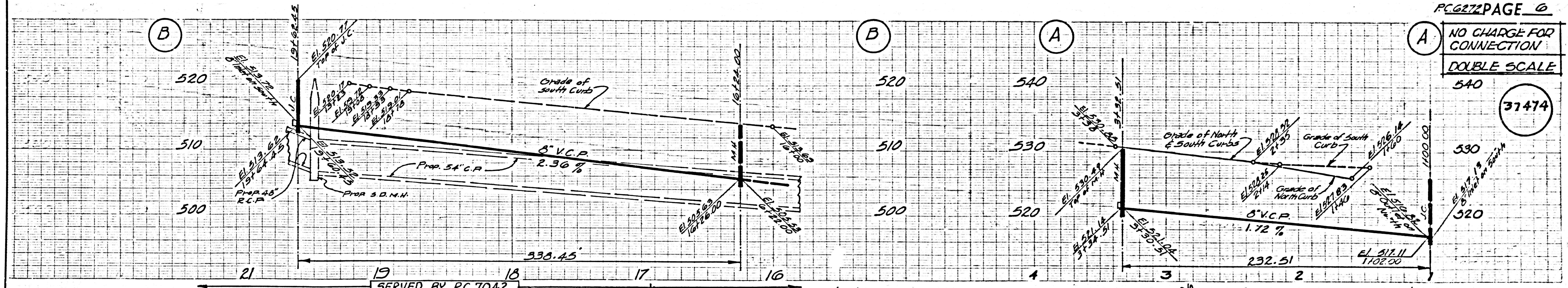
37473



NO CHARGE FOR CONNECTION

DOUBLE SCALE

37474

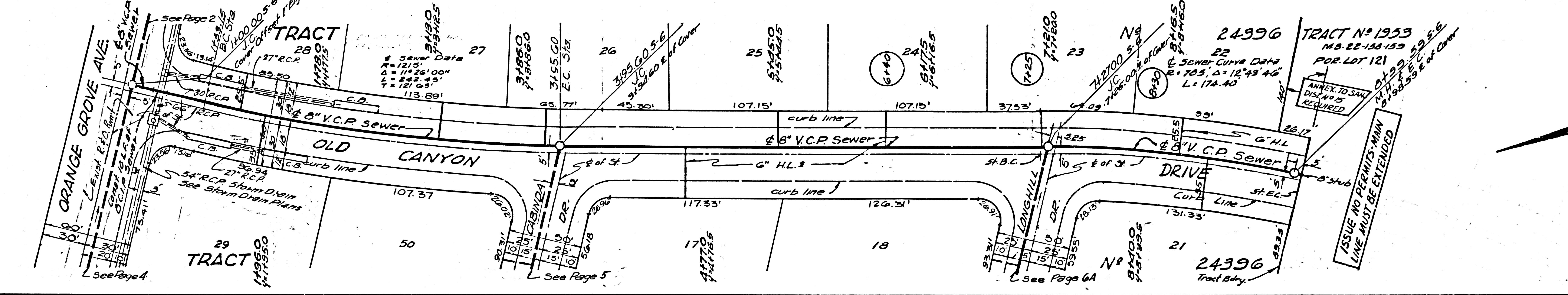
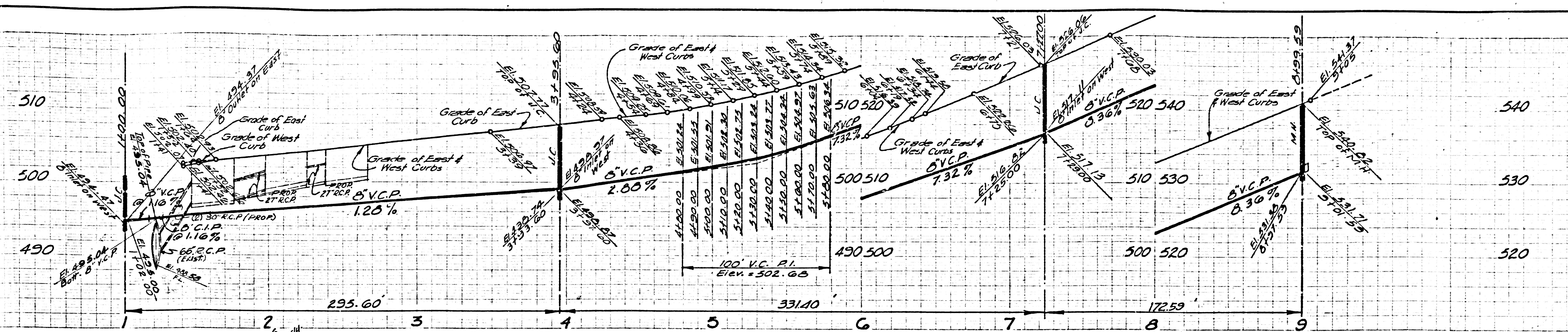


ANNEXATION TO SANIT. DIST. NO. 15 REQUIRED

NO CHARGE FOR CONNECTION

DOUBLE SCALE

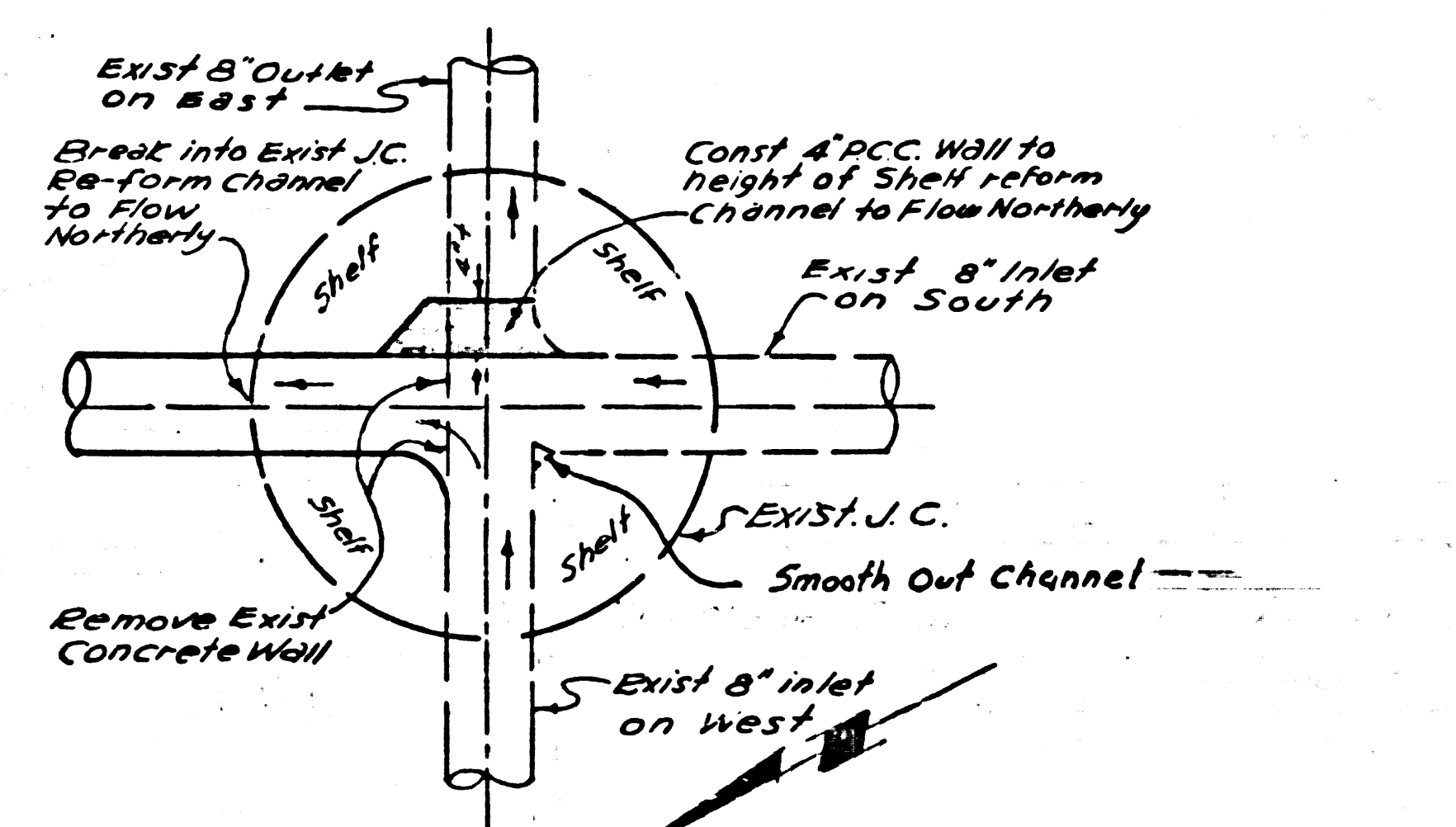
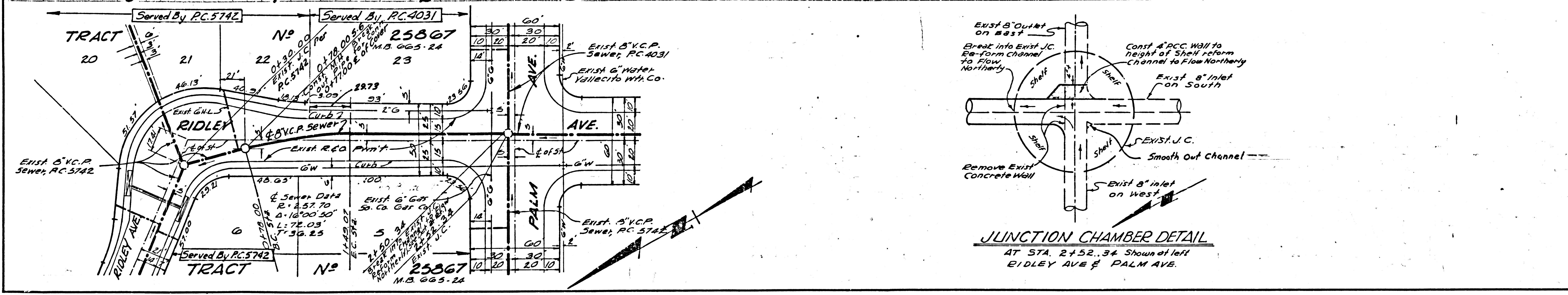
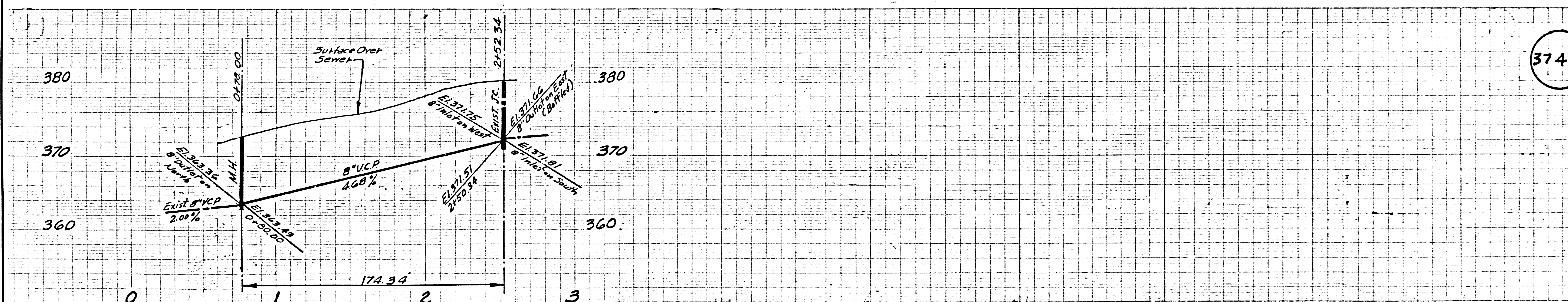
37475



NO CHARGE FOR CONNECTION

DOUBLE SCALE

37476



JUNCTION CHAMBER DETAIL
 AT STA. 2+52.34 Shows at left
 RIDLEY AVE & PALM AVE.