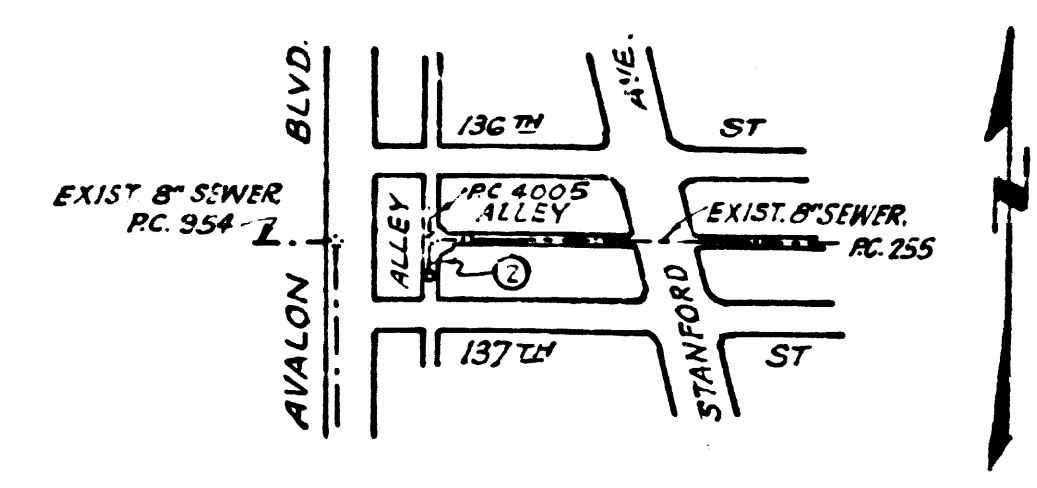


B.M. SY 2978 Elev. 120.064  
 L&BN in E. cb. Avalon Blvd 11'  
 S. of cb. ref. At N.E. cor. 137th St.  
 To the E. of Avalon Blvd.  
 Watts Quad. 1955



INDEX MAP  
 P.C. 6276  
 1st ALLEY N/O 137th ST  
 SCALE 1"=600'

**PRIVATE ENGINEER'S  
 NOTICE TO CONTRACTOR**

The existence and location of any underground utility pipes or structures shown on these plans are obtained by a search of the available records. To the best of our knowledge there are no existing utilities except as shown on this map.  
 The Contractor is required to take due precautionary measures to protect the utility lines shown and any other lines not of record or not shown on this drawing.

**LENNOX, BLDG. DIST. NO. 7**

- NOTES:
1. PROVIDE STAKES ON THE PROPERTY LINE OR PROPERTY LINES PRODUCED AT RIGHT ANGLES TO THE SEWER LINE AT THE CENTER LINE OF EACH MANHOLE.
  2. NO REPRESENTATIVE OF THE COUNTY ENGINEER WILL SURVEY OR LAY OUT ANY PORTION OF THE WORK.
  3. THE OWNER OR HIS AUTHORIZED REPRESENTATIVE SHALL FURNISH THE COUNTY ENGINEER WITH GRADE SHEETS AND STATIONING FOR ALL HOUSE LATERALS AND Y BRANCHES AND SHALL PROVIDE STAKES FOR THEM AT THEIR PROPER LOCATIONS WITH STATIONING PLAINLY MARKED. ANY CHANGE IN LOCATION SHALL BE REQUESTED IN WRITING BY THE OWNER OR HIS REPRESENTATIVE.
  4. THE PRIVATE ENGINEER SHALL FURNISH THE HOUSE LATERAL DEPTH AT THE PROPERTY LINE BELOW THE TOP OF CURB ELEVATION FOR EACH HOUSE LATERAL ON THE GRADE SHEET.
  5. NO REVISIONS SHALL BE MADE IN THESE PLANS WITHOUT THE APPROVAL OF THE COUNTY ENGINEER.
  6. USE STANDARD MANHOLE FRAMES AND COVERS, S-117.
  7. USE EXTRA STRENGTH PIPE. ALL PIPE STANDARD DEPTH.
  8. USE CEMENT MORTAR OR MECH. COMR FOR ALL V.C.P. JOINTS PER SPECS, SEC. 34, 48, & 49 IN MAIN LINE.
  9. RESURFACE ALL TRENCH WITHIN PAVED AREA TO MEET L.A. COUNTY ROAD DEPT. OR CALIF. STATE HIGHWAY REQUIREMENTS IN ACCORDANCE WITH PERMITS.
  10. ENCASE FOUR FEET OF SEWER AT POINTS OF INTERFERENCE WITH ROLLS, CASE III, S-172.
  11. HOUSE LATERALS TO BE CONSTRUCTED WITH 1/4" RISE PER FOOT TO PROPERTY LINE.
  12. ALL STRUCTURES SHALL BE BRICK SEWER STRUCTURES, S-104.
  13. FOR ALLOWABLE LEAKAGE TEST USE FORMULA NO. 1, SPECS, SEC. 54.
  14. MANHOLE TOPS IN UNIMPROVED RIGHTS-OF-WAY TO BE SIX INCHES ABOVE FINISHED GRADE.
  15. THE CONTRACTOR SHALL NOTIFY THE CONSTRUCTION DIVISION BY TELEPHONE, MADISON 9-4747, EXT. 8521 AT LEAST TWENTY-FOUR HOURS BEFORE STARTING ANY WORK UNDER THIS CONTRACT.
  16. STANDARD SPECIFICATIONS DATED MAY 25, 1962 SHALL APPLY IN THE CONSTRUCTION OF THIS PROJECT.
  17. USE MECH. COMR JOINTS FOR ALL V.C.P. IN HOUSE LATERALS PER SPECS, SEC. 34 & 49.

NO CONNECTIONS FOR THE DISPOSAL OF INDUSTRIAL WASTES SHALL BE MADE TO SEWERS SHOWN ON THESE DRAWINGS WITHOUT WRITTEN PERMISSION FROM THE CHIEF ENGINEER AND GENERAL MANAGER OF THE COUNTY SANITATION DISTRICTS.

NO CHARGE FOR CONNECTION  
*[Signature]*

PROFILE ALIGNMENT AND GRADE OF **P.C. 6276**  
**SANITARY SEWERS PAGE 1**  
 TO BE CONSTRUCTED IN  
**1st ALLEY E/O AVALON BLVD.**

**PRIVATE CONTRACT NO. 6276**

W.S. 36  
 1 SHEET 2 PAGES  
 SCALE: VERT. 1"=4'  
 HORIZ. 1"=40'  
 MARCH, 1962  
 PREPARED IN THE OFFICES OF  
**OLSON SURVEYING SERVICE, INC.**

32629

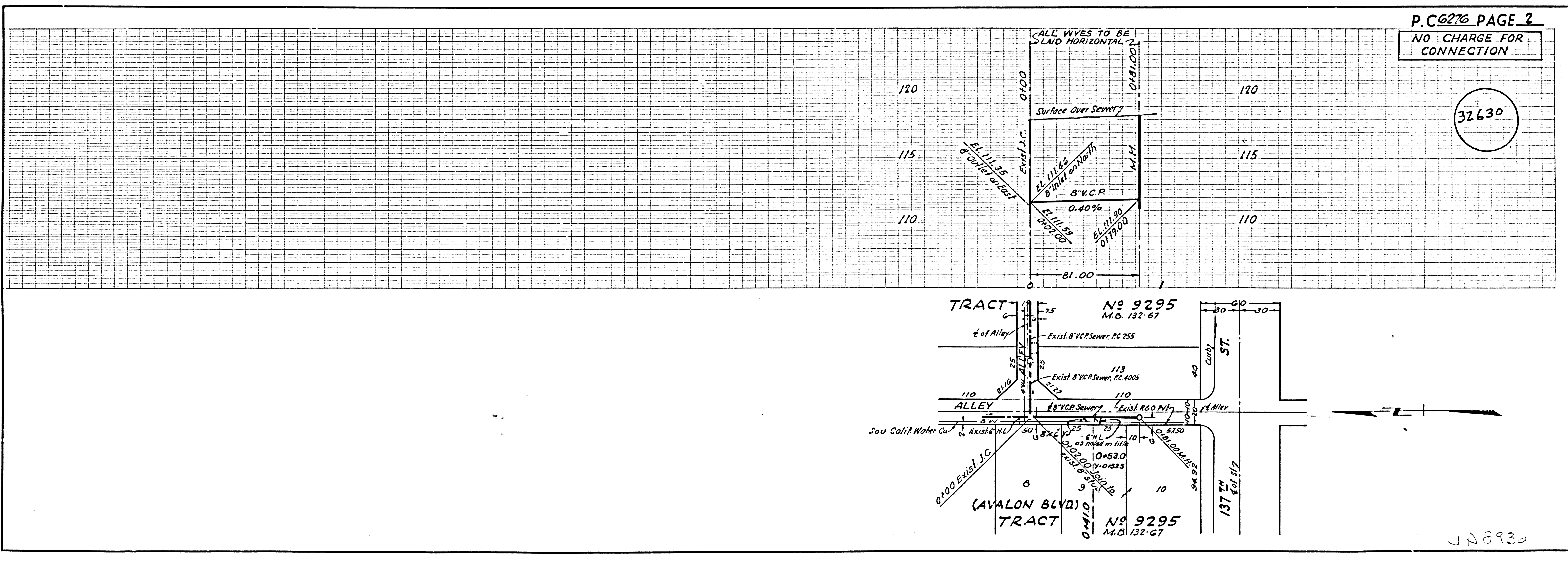
By: *[Signature]*  
 REG. C. E. NO. 7820  
 FOR LEGEND SEE PLAN NO. S-A-64

NOTE:  
 GRADES TO WHICH THIS IMPROVEMENT IS TO BE CONSTRUCTED ARE SHOWN ON PLANS AND PROFILES. GRADE POINTS FOR TOP OF CURBS, CENTER LINE OF STREETS, OR CENTER LINE OF ALLEYS ARE SHOWN BY CIRCLES ON PROFILES. AT ALL POINTS BETWEEN DESIGNATED POINTS THE GRADE SHALL BE ESTABLISHED SO AS TO CONFORM TO A STRAIGHT LINE DRAWN BETWEEN SAID DESIGNATED POINTS.  
 ELEVATIONS ARE IN FEET ABOVE U.S.C. & G.S. SEA LEVEL DATUM OF 1929.  
 THIS DRAWING AND THE DATA HEREON ARE HEREBY MADE A PART OF THE SPECIFICATIONS.  
 WORK SHALL BE CONSTRUCTED ACCORDING TO SPECIFICATIONS ON FILE IN THE OFFICE OF THE COUNTY ENGINEER AND SHALL BE PROSECUTED ONLY IN THE PRESENCE OF THE COUNTY ENGINEER.  
 BEFORE WORK CAN BE STARTED, THE CONTRACTOR MUST OBTAIN A PERMIT TO EXCAVATE IN COUNTY STREETS FROM THE L. A. COUNTY ROAD DEPT., DISTRICT OFFICE NO. 3 AND PAY A FEE, WITH THE COUNTY ENGINEER, ROOM 810 L. A. COUNTY ROAD BLDG. 108 N. 2nd ST., SUFFICIENT TO COVER THE COST OF CONSTRUCTION INSPECTION AND RECORD PLANS.  
 APPROVAL OF THIS PLAN BY THE COUNTY OF LOS ANGELES DOES NOT CONSTITUTE A REPRESENTATION AS TO THE ACCURACY OF THE LOCATION OR OF THE EXISTENCE OR NON-EXISTENCE OF ANY UNDERGROUND UTILITY PIPE, OR STRUCTURE WITHIN THE LIMITS OF THIS PROJECT. THIS NOTE APPLIES TO ALL PAGES.  
 IF WORK IS TO BE DONE IN A STATE HIGHWAY, A PERMIT MUST BE OBTAINED FROM THE STATE OF CALIFORNIA, DIVISION OF HIGHWAYS, 120 SOUTH SPRING STREET.

COUNTY OF LOS ANGELES, CALIFORNIA  
 APPROVED, JOHN A. LAMBIE, COUNTY ENGINEER APPROVED, J.D. PARKMAN, CHIEF ENGINEER  
 CO. SAN. DIST. NO. 1  
 BY: *[Signature]* SANITATION ENGINEER BY: *[Signature]* OFFICE ENGINEER  
 CHECKED BY: *[Signature]* 4-15-62  
 OFFICE OF COUNTY ENGINEER, REG. C. E. NO. 10443  
 SUBMITTED BY: *[Signature]*  
 PALOS VERDES-CANTIMELA VALLEY REGIONAL ENGINEER

P.C. 6276 PAGE 2  
 NO CHARGE FOR CONNECTION

32630



JN 8930