

Bench Mark  
 35-1616 Base Line Quad  
 CO. SUR. MON. IN WELL ON APPROX. E. OF  
 LOS ALTOS DRIVE 163' W. & HACIENDA  
 BOULEVARD MKD. BM. 38-9 1954 E. 63'  
 ELEV. 496.286' 1955 Datum

FUENTE BLDG. DIST. NO. 2

PROFILE ALIGNMENT AND GRADE OF P.C. 6277  
 SANITARY SEWERS PAGE 1  
 TO BE CONSTRUCTED IN JN0358.57

TRACT NO. 27200

PRIVATE CONTRACT NO. 6277

W.S. 38

5 SHEETS, 10 SAGES

SCALE: VERT. 1"=4' HORIZ. 1"=40' JUNE, 1962

PREPARED IN THE OFFICES OF  
 ENGINEERING SERVICE CORPORATION

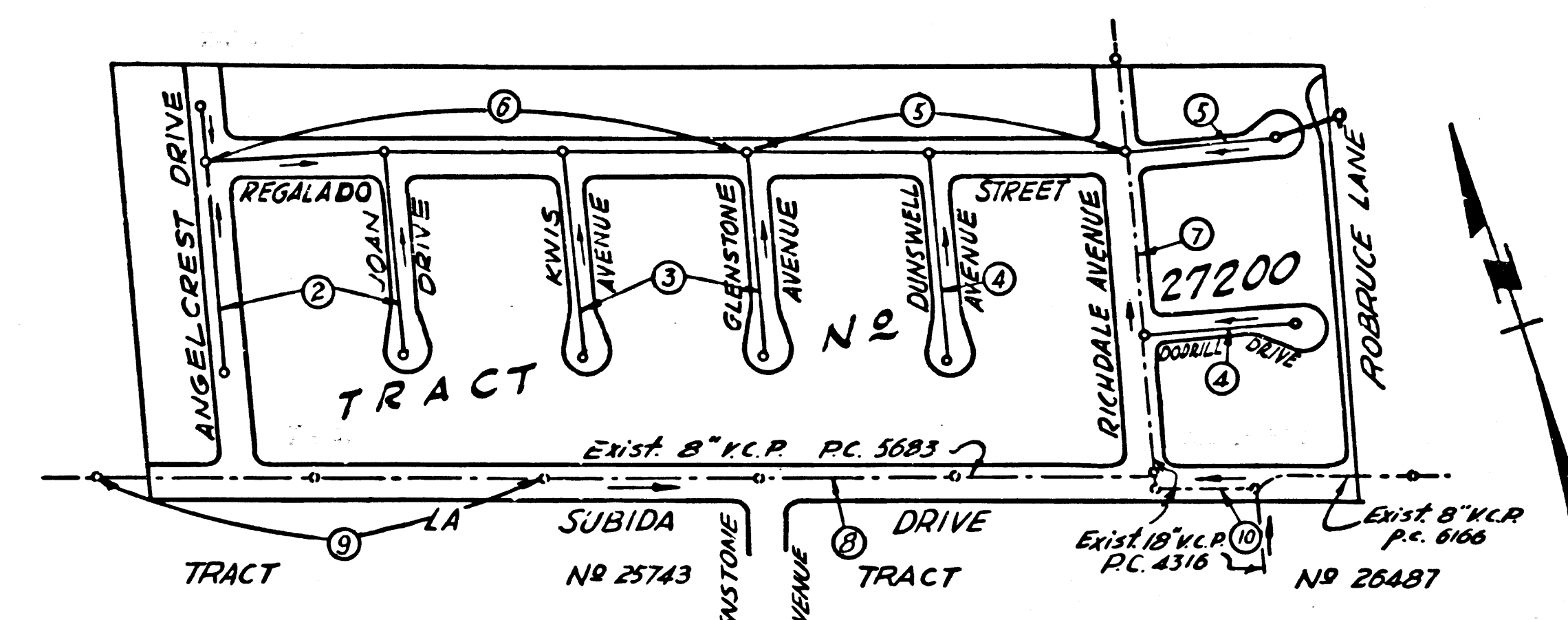
By: E. B. Koenig  
 REG. C. E. NO. 3622

FOR LEGEND SEE PLAN NO. S-A-64

32514

- NOTES:
1. PROVIDE STAKES ON THE PROPERTY LINE OR PROPERTY LINES PRODUCED AT RIGHT ANGLES TO THE SEWER LINE AT THE CENTER LINE OF EACH MANHOLE.
  2. NO REPRESENTATIVE OF THE COUNTY ENGINEER WILL SURVEY OR LAYOUT ANY PORTION OF THE WORK.
  3. THE OWNER OR HIS AUTHORIZED REPRESENTATIVE SHALL FURNISH THE COUNTY ENGINEER WITH GRADE SHEETS AND STATION FOR ALL HOUSE LATERALS AND T-BRANCHES AND SHALL PROVIDE STAKES FOR THEM AT THEIR PROPER LOCATIONS WITH STATIONING PLAINLY MARKED. ANY CHANGE IN LOCATION SHALL BE REQUESTED IN WRITING BY THE OWNER OR HIS REPRESENTATIVE.
  4. NO REVISIONS SHALL BE MADE IN THESE PLANS WITHOUT THE APPROVAL OF THE COUNTY ENGINEER.
  5. USE STANDARD MANHOLE FRAMES AND COVERS, S.A-117.
  6. USE EXTRA STRENGTH PIPE, ALL PIPE STANDARD DEPTH EXCEPT AS NOTED.
  7. USE MECHANICAL COMPRESSION JOINTS FOR ALL VITRIFIED CLAY PIPE PER SPECIFICATIONS, SEC. 36, 48 & 49.
  8. RESURFACE ALL TRENCH WITHIN PAVED AREA TO MEET L. A. COUNTY ROAD DEPT. OR CALIF. STATE HIGHWAY DEPT. REQUIREMENTS IN ACCORDANCE WITH PERMITS.
  9. INCREASE FOUR FEET OF SEWER AT POINTS OF INTERFERENCE WITH POLES, CASE # S-A-172.
  10. HOUSE LATERALS TO BE CONSTRUCTED WITH INVERTS AT PROPERTY LINE... FEET BELOW CURB GRADE EXCEPT AS NOTED.
  11. MANHOLES SHALL BE BRICK SEWER STRUCTURES, S.A. 104, PRECAST CONCRETE MANHOLES PER S-A-171 OR S-A-173 MAY BE USED; ALTERNATE LOCATIONS APPROVED BY THE COUNTY ENGINEER.
  12. FOR ALLOWABLE LEAKAGE TEST USE FORMULA NO. 116, S.C. 54.
  13. THE PRIVATE ENGINEER SHALL FURNISH THE HOUSE LATERAL DEPTH AT THE PROPERTY LINE BELOW THE TOP OF CURB ELEVATION FOR EACH HOUSE LATERAL ON THE GRADE SHEET.
  14. THE CONTRACTOR SHALL NOTIFY THE CONSTRUCTION DIVISION BY TELEPHONE, MADISON 9-0747, EXT. 8257 AT LEAST 24 HOURS BEFORE STARTING ANY WORK UNDER THIS CONTRACT.
  15. STANDARD SPECIFICATIONS DATED MAY 25, 1962, APPLY IN THE CONSTRUCTION OF THIS PROJECT.

ISSUE NO PERMITS FOR LOTS 116 & 117  
 PAGE 10 UNTIL RC. 6166 IS ACCEPTED.



PRIVATE ENGINEER'S  
 NOTICE TO CONTRACTOR

THE EXISTENCE AND LOCATION OF ANY UNDERGROUND UTILITY PIPES OR STRUCTURES SHOWN ON THESE PLANS ARE OBTAINED BY A SEARCH OF THE AVAILABLE RECORDS TO THE BEST OF OUR KNOWLEDGE THERE ARE NO EXISTING UTILITIES EXCEPT AS SHOWN ON THIS MAP. THE CONTRACTOR IS REQUIRED TO TAKE PRECAUTIONARY MEASURES TO PROTECT THE UTILITY LINES SHOWN AND ANY OTHER LINES NOT SHOWN OR NOT SHOWN ON THIS DRAWING.

INDEX MAP  
 TRACT NO. 27200  
 SCALE 1"=300'  
 P. C. 6277

COLLECT CHARGES  
 AS INDICATED

P. R. Smith

ENGINEERING SERVICE CORPORATION 1127 W. WASHINGTON BLVD. LOS ANGELES 15, CALIF. RI. 9-7281	
REVISIONS	TRACED BY E.S.
	DES'G'D BY L.V.
	CK'D BY C.M.R.
	SUBMITTED
SUB STRUCTURES OK'D	
W. O. NO.	DWG. NO.
6487-13	AS NOTED

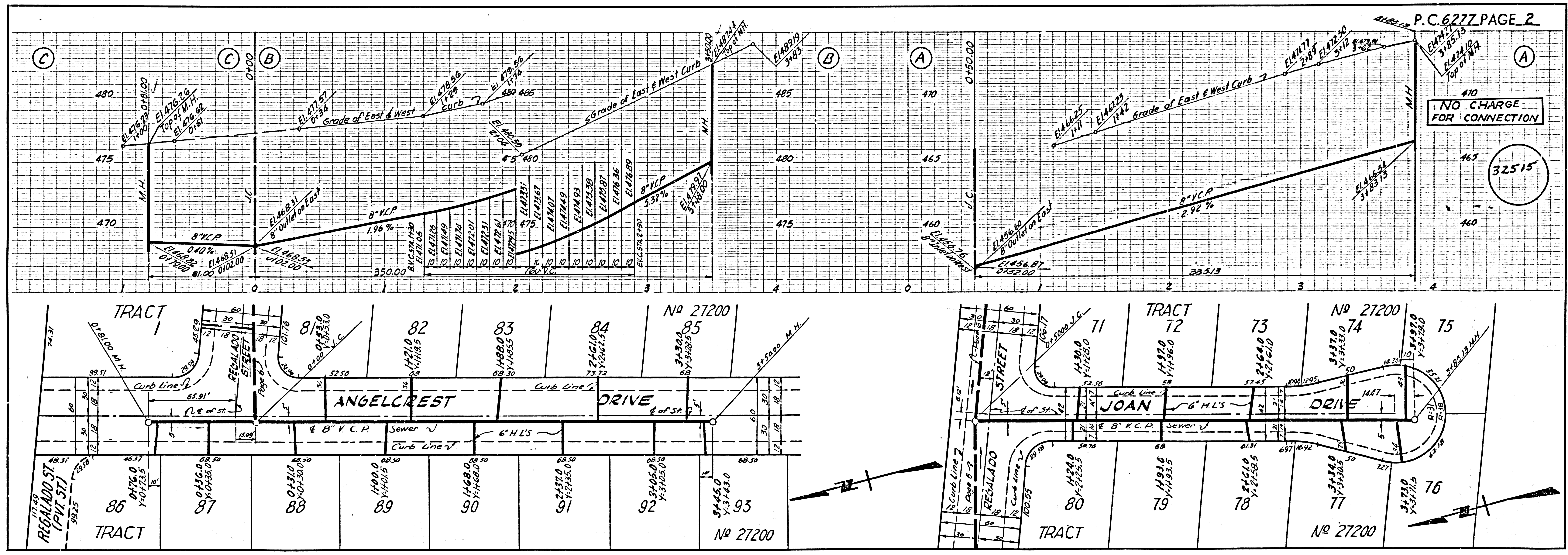
NOTE:  
 GRADES TO WHICH THIS IMPROVEMENT IS TO BE CONSTRUCTED ARE SHOWN ON PLANS AND PROFILES. GRADE POINTS FOR TOP OF CURBS, CENTER LINE OF STREETS, OR CENTER LINE OF ALLEYS ARE SHOWN BY CIRCLES ON PROFILES. AT ALL POINTS BETWEEN DESIGNATED POINTS THE GRADE SHALL BE ESTABLISHED SO AS TO CONFORM TO A STRAIGHT LINE DRAWN BETWEEN SAID DESIGNATED POINTS.  
 ELEVATIONS ARE IN FEET ABOVE U.S. DATUM OR MEAN SEA LEVEL.  
 THIS DRAWING AND THE DATA HEREON ARE HEREBY MADE A PART OF THE SPECIFICATIONS.  
 WORK SHALL BE CONSTRUCTED ACCORDING TO SPECIFICATIONS ON FILE IN THE OFFICE OF THE COUNTY ENGINEER AND SHALL BE PROSECUTED ONLY IN THE PRESENCE OF THE COUNTY ENGINEER.  
 BEFORE WORK CAN BE STARTED, THE CONTRACTOR MUST OBTAIN A PERMIT TO EXCAVATE IN COUNTY STREETS FROM THE L. A. COUNTY ROAD DEPT., 205 WEST 4TH ST., LOS ANGELES, CALIF. 90012, AND PAY A FEE TO THE COUNTY ENGINEER, ROOM 310 COUNTY ENG. BLDG., INC. ROOM 240 ST. SUFFICIENT TO COVER THE COST OF CONSTRUCTION INSPECTION AND RECORD PLANS.  
 APPROVAL OF THIS PLAN BY THE COUNTY OF LOS ANGELES DOES NOT CONSTITUTE A REPRESENTATION AS TO THE ACCURACY OF THE LOCATION OF OR THE EXISTENCE OR NON-EXISTENCE OF ANY UNDERGROUND UTILITY PIPE, OR STRUCTURE WITHIN THE LIMITS OF THIS PROJECT. THIS NOTE APPLIES TO ALL PAGES.  
 IF WORK IS TO BE DONE IN A STATE HIGHWAY, A PERMIT MUST BE OBTAINED FROM THE STATE OF CALIFORNIA, DIVISION OF HIGHWAYS, 120 SOUTH SPRING STREET.

COUNTY OF LOS ANGELES, CALIFORNIA

APPROVED, JOHN A. LAMBIE, COUNTY ENGINEER  
 APPROVED, J. D. PANKRATZ, CHIEF ENGINEER

By: *R. S. Koenig* ASSISTANT SANITATION ENGINEER  
 By: *J. D. Pankratz* CHIEF ENGINEER  
 CHECKED BY: *Henry Lee* 8-17-62  
 OFFICE OF COUNTY ENGINEER, REG. C. E. NO. 10543

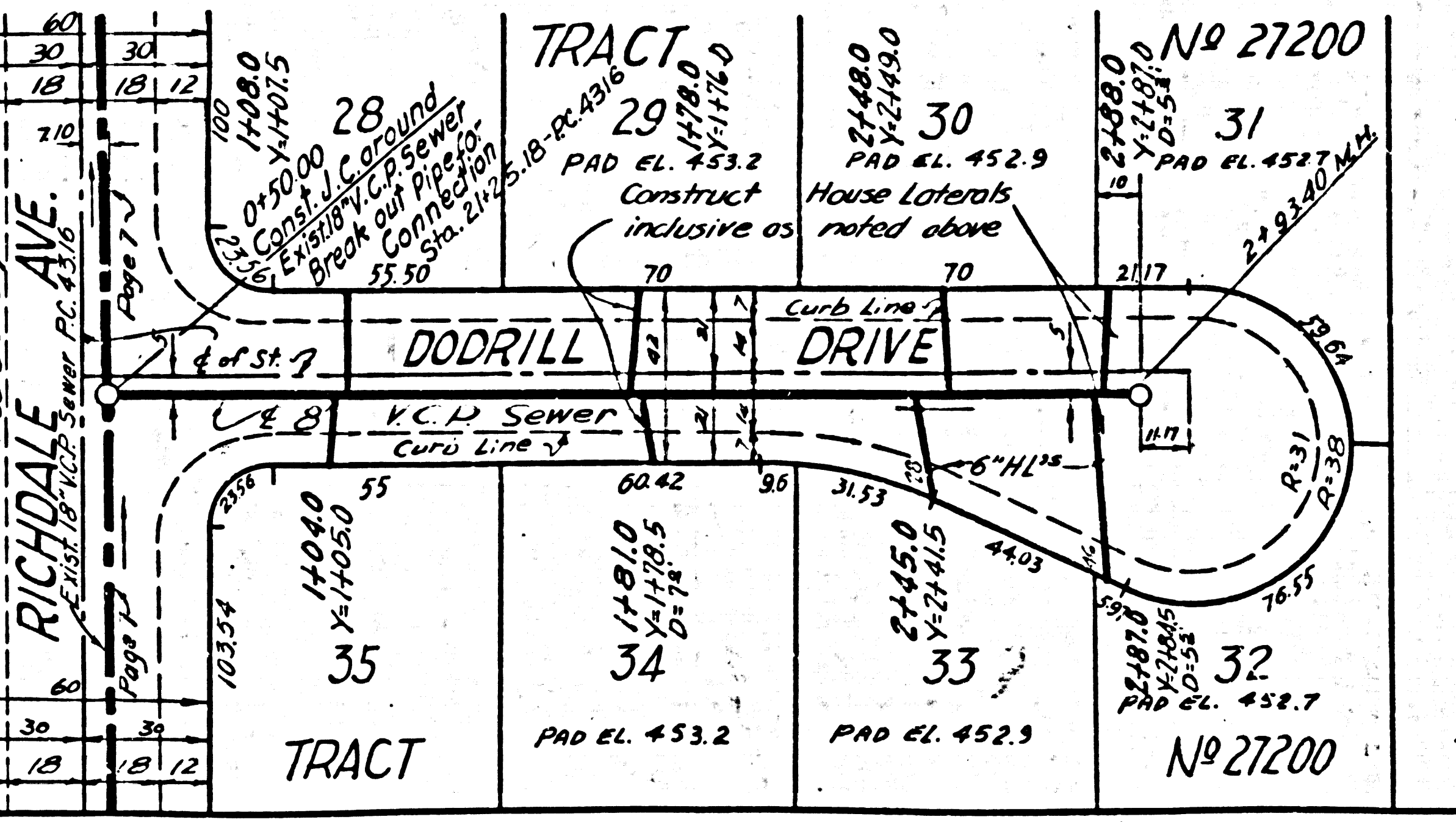
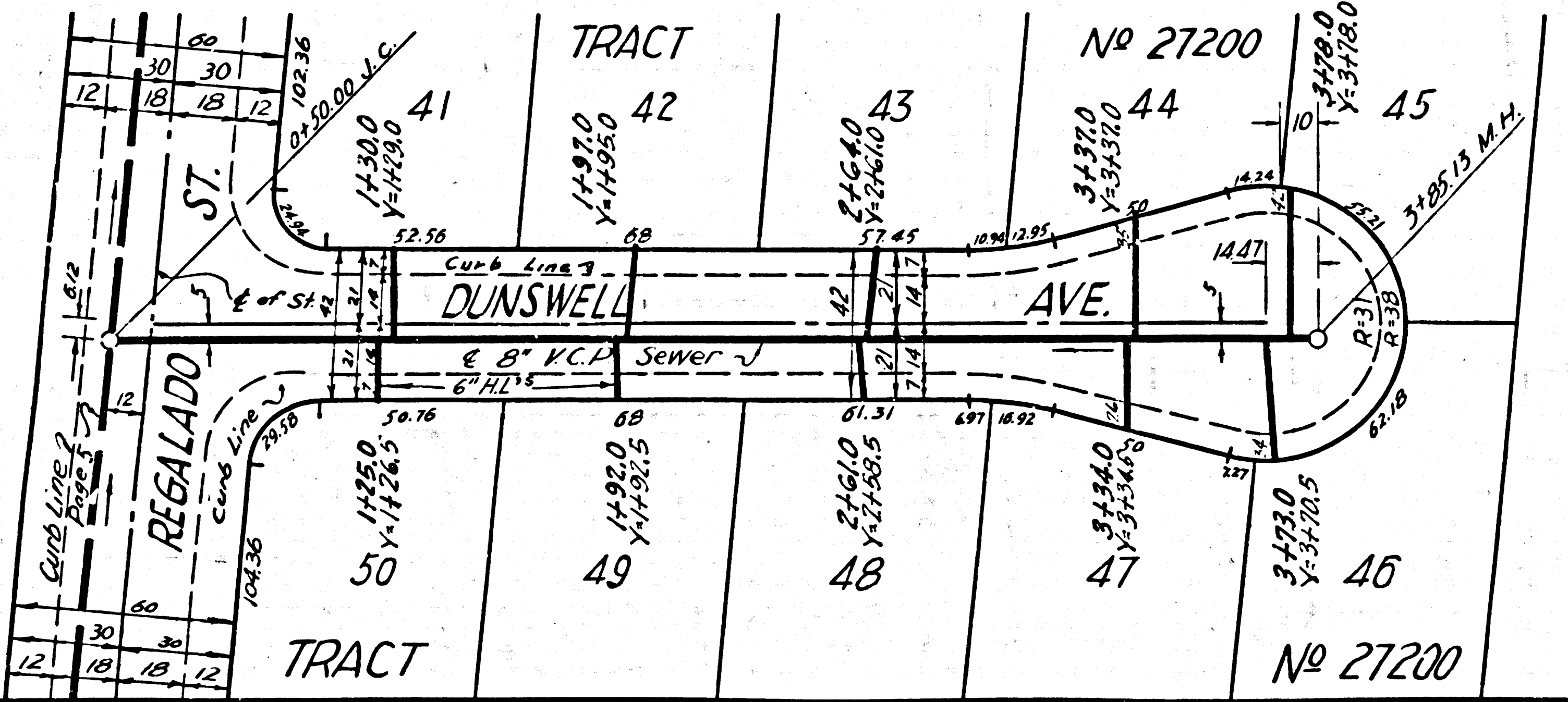
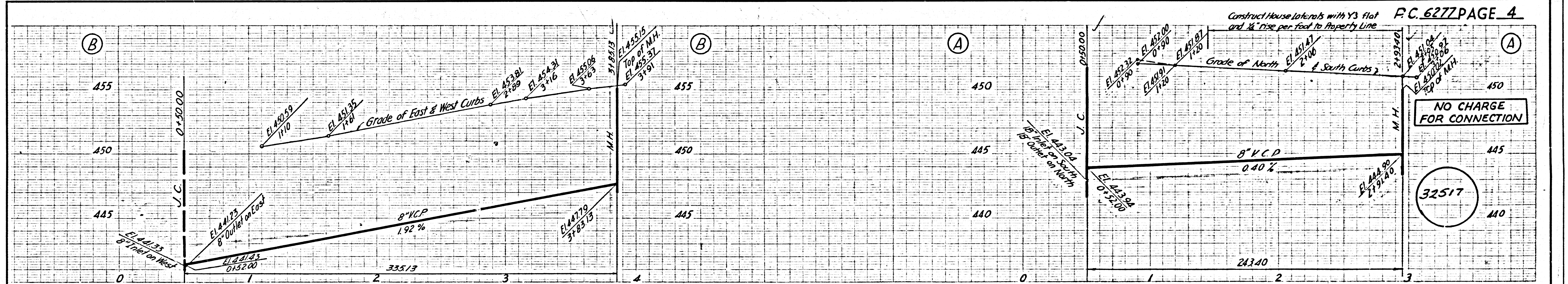
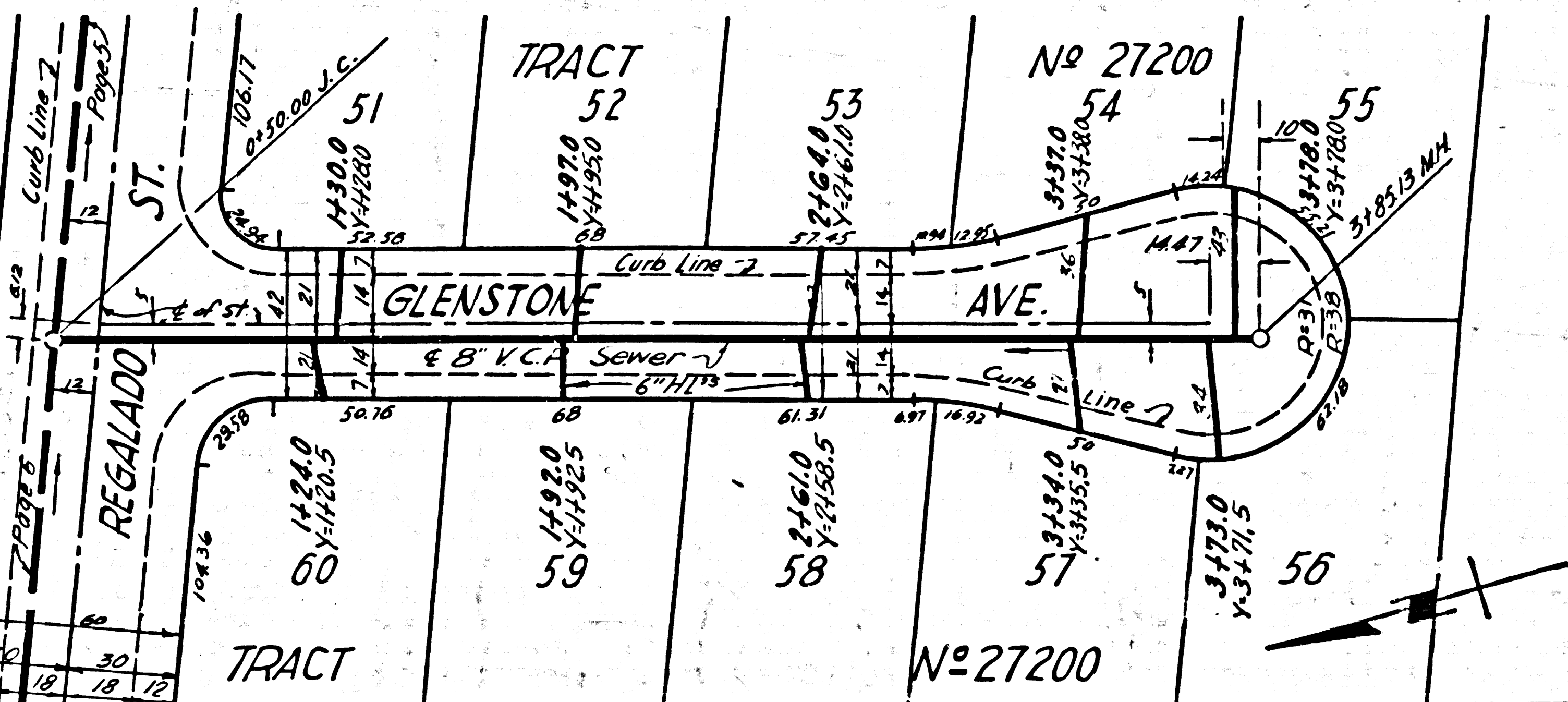
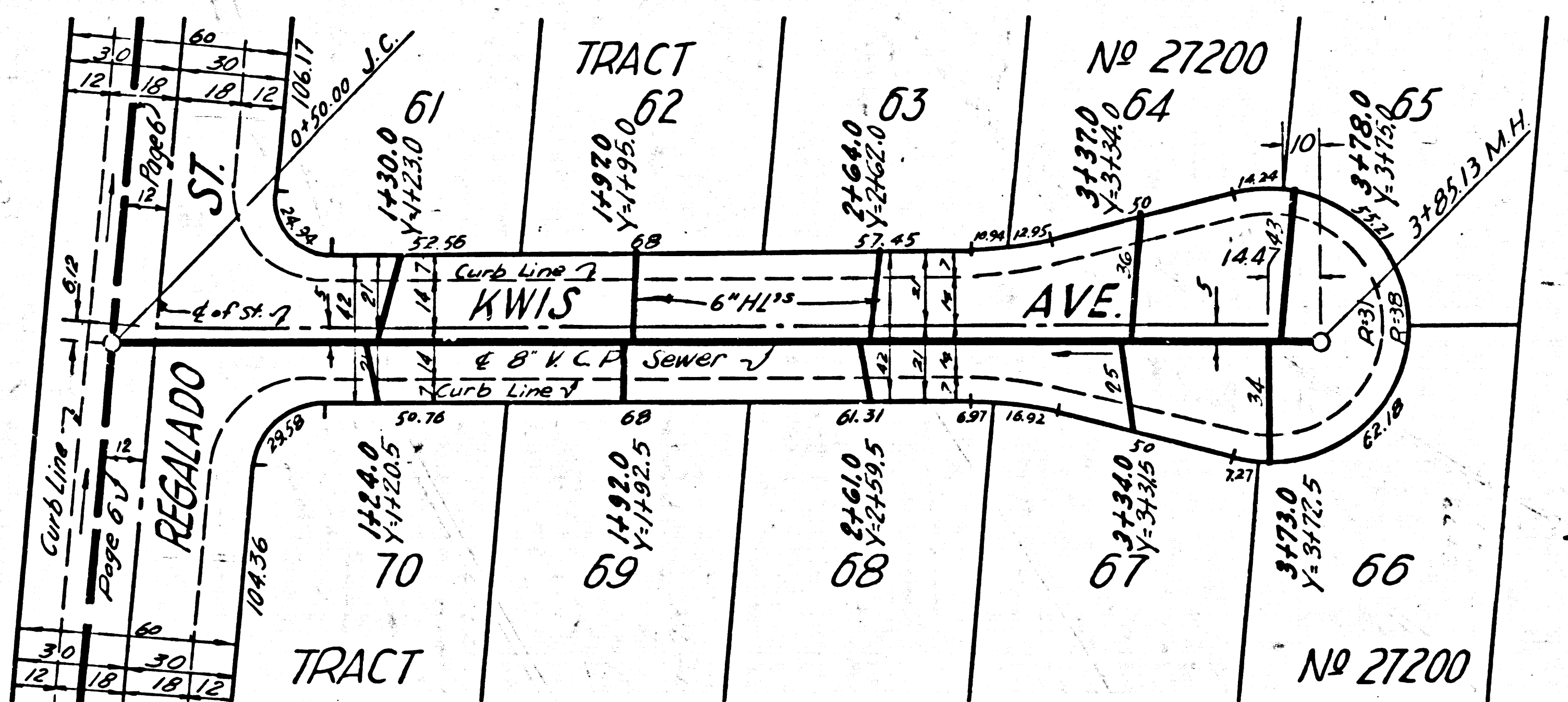
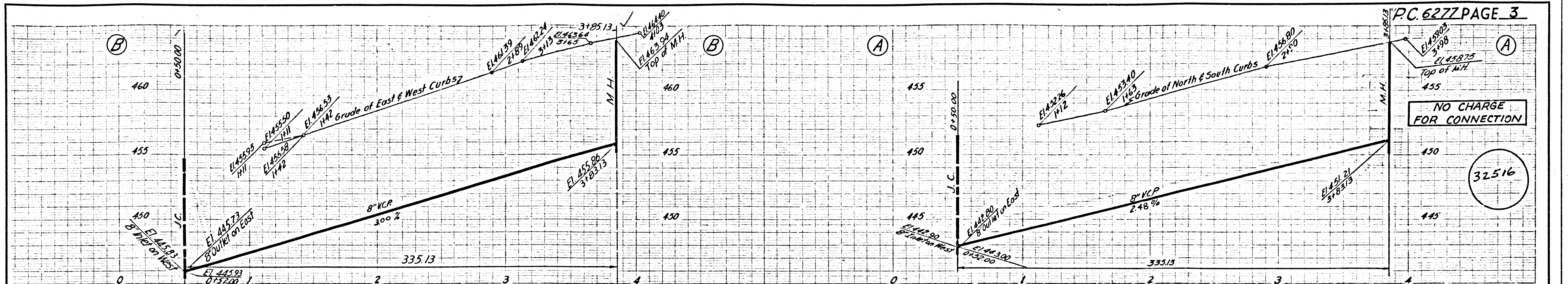
NO CONNECTIONS FOR THE DISPOSAL OF INDUSTRIAL WASTES SHALL BE MADE TO SEWERS SHOWN ON THESE DRAWINGS WITHOUT WRITTEN PERMISSION FROM THE CHIEF ENGINEER AND GENERAL MANAGER OF THE COUNTY SANITATION DISTRICTS.

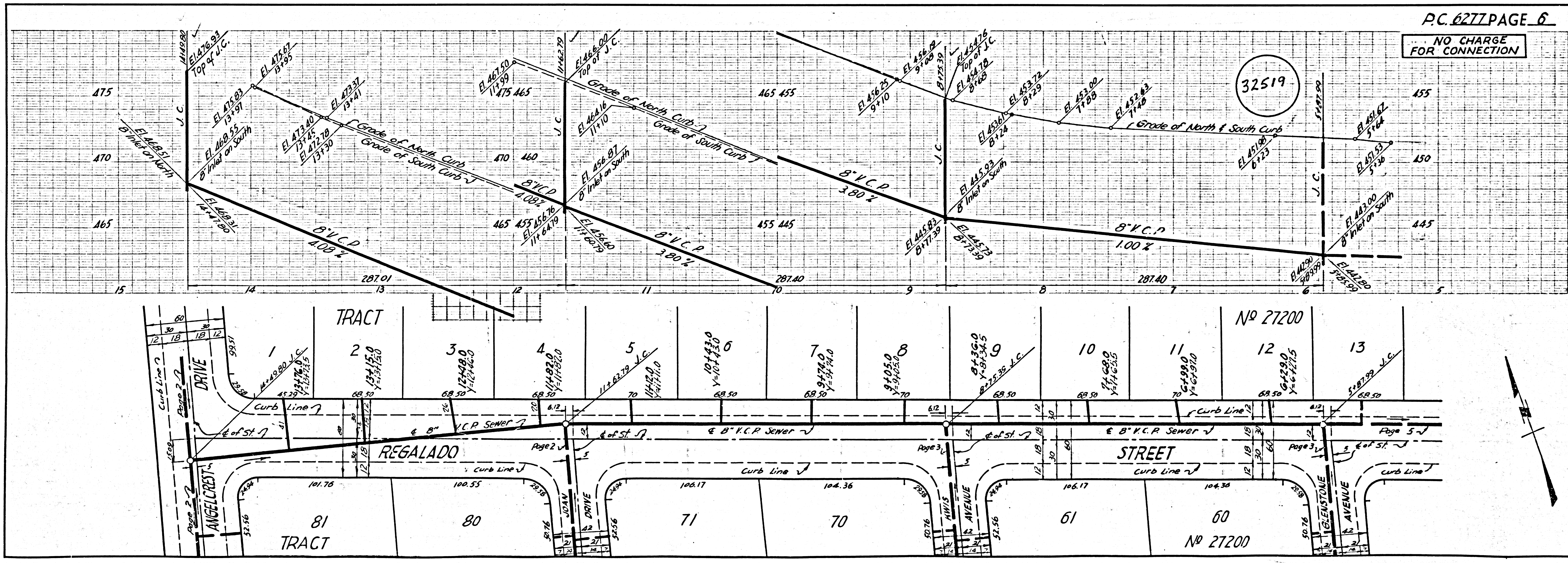
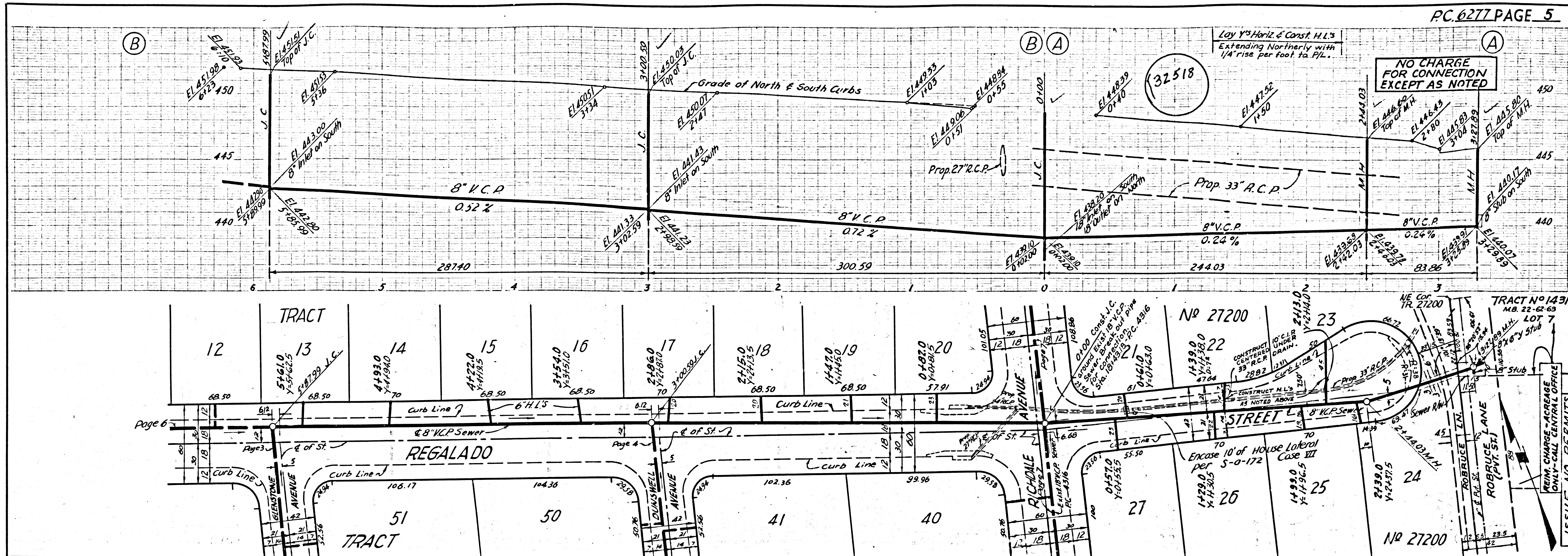


P.C. 6277 PAGE 2

NO CHARGE FOR CONNECTION

32515

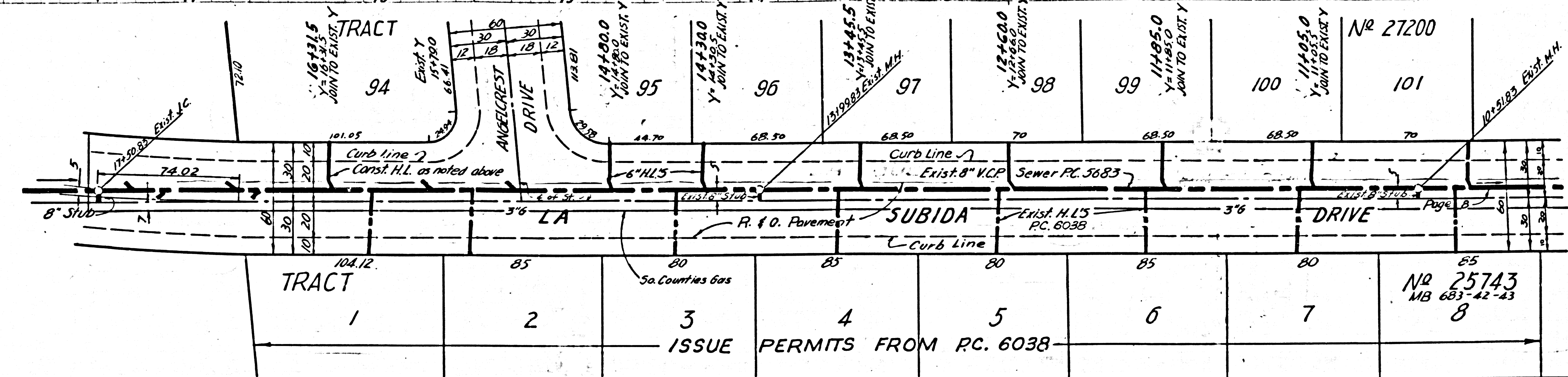
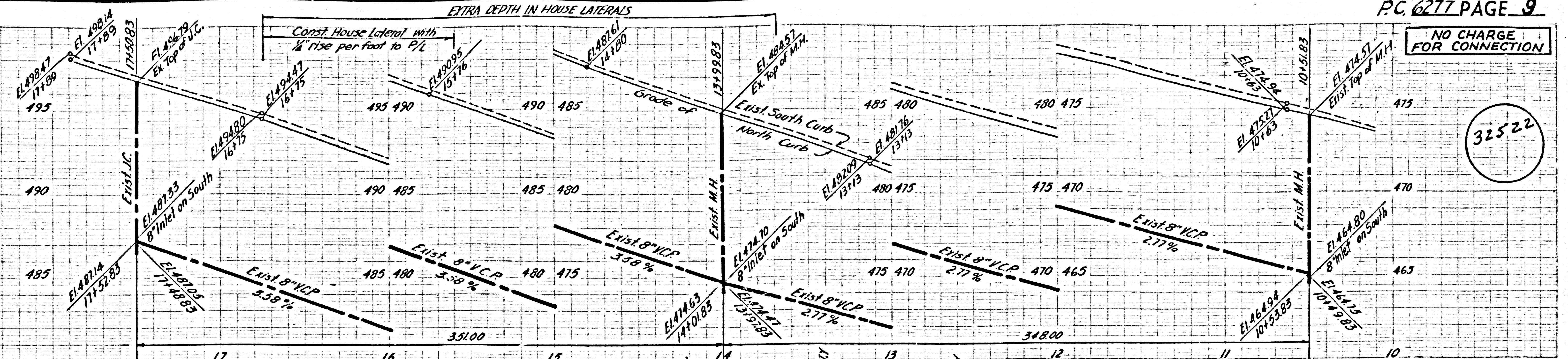






NO CHARGE FOR CONNECTION

32522



NO CHARGE FOR CONNECTION

32523

