

BENCH MARK NO. 33-5, Elev. 46.458, C.S.F.B.1353-167.
C.S. Mon., 40.5' N. of C.L. of Del Amo Blvd. and 67.4'
W. of C.L. of Paramount Blvd. 1962 Adj.

LAKWOOD BLDG. DIST. NO. 4.01

PROFILE ALIGNMENT AND GRADE OF P.C. 6283
SANITARY SEWERS PAGE 1
TO BE CONSTRUCTED IN

R/W NORTH OF CARSON STREET
PRIVATE CONTRACT NO. 6283

W.S. 30
1 SHEET OF 2 PAGES
SCALE: VERT. 1"=4' HORIZ. 1"=40'
JUNE, 1962
PREPARED IN THE OFFICES OF

ROBERT W. WOODBURY
BY: Robert W. Woodbury
REG. C. E. NO. 6585

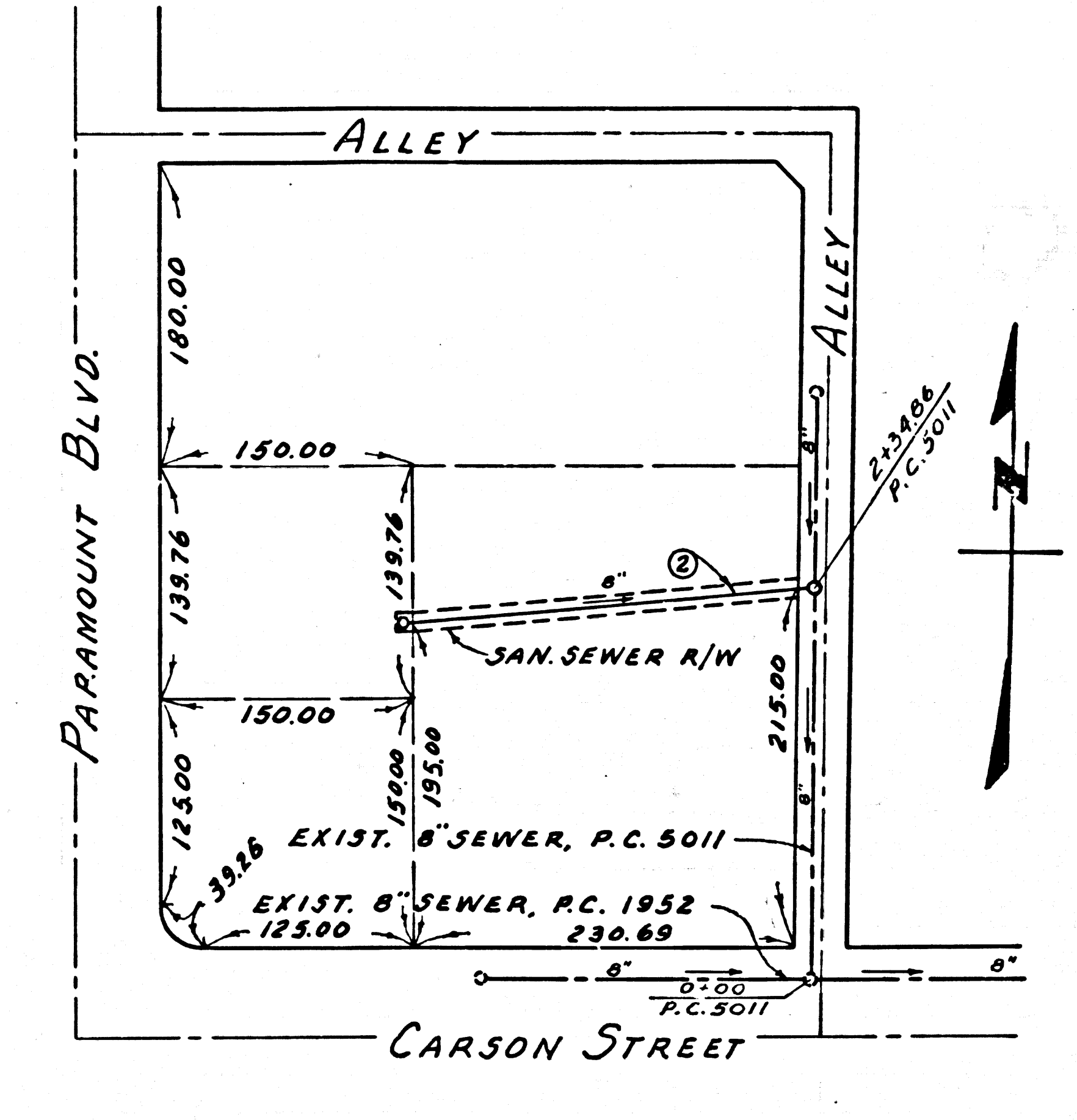
32765

FOR LEGEND SEE PLAN NO. S-A-64

NOTE:
GRADES TO WHICH THIS IMPROVEMENT IS TO BE CONSTRUCTED ARE SHOWN ON PLANS AND PROFILES. GRADE POINTS FOR TOP OF CURBS, CENTER LINE OF STREETS OR CENTER LINE OF ALLEYS ARE SHOWN BY CIRCLES ON PROFILES. AT ALL POINTS BETWEEN DESIGNATED POINTS THE GRADE SHALL BE ESTABLISHED SO AS TO CONFORM TO A STRAIGHT LINE DRAWN BETWEEN SAID DESIGNATED POINTS.
ELEVATIONS ARE IN FEET ABOVE U.S.C. & G.S. MEAN SEA LEVEL DATUM OF 1929.
THIS DRAWING AND THE DATA HEREON ARE HEREBY MADE A PART OF THE SPECIFICATIONS.
WORK SHALL BE CONSTRUCTED ACCORDING TO SPECIFICATIONS ON FILE IN THE OFFICE OF THE CITY ENGINEER AND SHALL BE PROSECUTED ONLY IN THE PRESENCE OF THE CITY ENGINEER.
BEFORE WORK CAN BE STARTED, THE CONTRACTOR MUST OBTAIN A PERMIT TO EXCAVATE IN CITY STREETS FROM THE L.A. COUNTY ROAD DEPT., DISTRICT OFFICE NO. 4, AND MAKE A DEPOSIT WITH THE CITY OF LAKEWOOD, 5050 CLARK AVENUE, SUFFICIENT TO COVER THE COST OF CONSTRUCTION INSPECTION AND RECORD PLANS.
APPROVAL OF THIS PLAN BY THE CITY OF LAKEWOOD DOES NOT CONSTITUTE A REPRESENTATION AS TO THE ACCURACY OF THE LOCATION OF OR THE EXISTENCE OR NON-EXISTENCE OF ANY UNDERGROUND UTILITY PIPE, OR STRUCTURE WITHIN THE LIMITS OF THIS PROJECT. THIS NOTE APPLIES TO ALL PAGES.
IF WORK IS TO BE DONE IN A STATE HIGHWAY, A PERMIT MUST BE OBTAINED FROM THE STATE OF CALIFORNIA, DIVISION OF HIGHWAYS, 128 SOUTH SPRING STREET.

CITY OF LAKEWOOD, CALIFORNIA

APPROVED, JOHN A. LAMBIE, CITY ENGINEER APPROVED, J.D. PARKINER, CHIEF ENGINEER
CO. SAN. DIST. NO. 3
BY: [Signature] ASST. SANITATION ENGINEER BY: [Signature] OFFICE ENGINEER
CHECKED BY: [Signature] 11-15-62
OFFICE OF CITY ENGINEER, REG. C. E. NO. 10443



INDEX MAP
SCALE: 1"=100'
P.C. 6283

- NOTES:
1. PROVIDE STAKES ON THE PROPERTY LINE OR PROPERTY LINES PRODUCED AT RIGHT ANGLES TO THE SEWER LINE AT THE CENTER LINE OF EACH MANHOLE.
 2. NO REPRESENTATIVE OF THE CITY ENGINEER WILL SURVEY OR LAY OUT ANY PORTION OF THE WORK.
 3. THE OWNER OR HIS AUTHORIZED REPRESENTATIVE SHALL FURNISH THE CITY ENGINEER WITH GRADE SHEETS AND STATIONING FOR ALL HOUSE LATERALS AND Y BRANCHES AND SHALL PROVIDE STAKES FOR THEM AT THEIR PROPER LOCATIONS WITH STATIONING PLAINLY MARKED. ANY CHANGE IN LOCATION SHALL BE REQUESTED IN WRITING BY THE OWNER OR HIS REPRESENTATIVE.
 4. NO REVISIONS SHALL BE MADE IN THESE PLANS WITHOUT THE APPROVAL OF THE CITY ENGINEER.
 5. USE STANDARD MANHOLE FRAMES AND COVERS, S-117.
 6. USE EXTRA STRENGTH PIPE; ALL PIPS IS STANDARD DEPTH. IN MAIN LINE SEWERS
 7. USE CEMENT MORTAR OR MECHANICAL COMPRESSION JOINTS FOR ALL V.C.P. JOINTS, PER SPEC'S, SECS. 14 & 16.
 8. RESURFACE ALL TRENCH WITH PAVED AREA TO MEET L.A. COUNTY ROAD DEPT. OR CALIF. STATE HIGHWAY REQUIREMENTS IN ACCORDANCE WITH PERMITS.
 9. ENCASE FOUR FEET OF SEWER AT POINTS OF INTERFERENCE WITH POLES, CASE III, S-177.
 10. ALL STRUCTURES SHALL BE BRICK SEWER STRUCTURES, S-104.
 11. FOR ALLOWABLE LEAKAGE TEST USE FORMULA NO. 1 SPEC'S, SEC. 54.
 12. MANHOLE TOPS IN UNIMPROVED RIGHTS-OF-WAY TO BE FLUSH WITH FINISHED GRADE.
 13. THE CONTRACTOR SHALL NOTIFY THE CONSTRUCTION DIVISION BY TELEPHONE, MADISON 5-474, EXT. 3111 AT LEAST TWENTY-FOUR HOURS BEFORE STARTING ANY WORK UNDER THIS CONTRACT.
 14. STANDARD SPECIFICATIONS DATED MAY 23, 1962, ON FILE IN THE CITY HALL, APPLY IN THE CONSTRUCTION OF THIS PROJECT.
 15. ALL STATE AND LOCAL TRENCH SAFETY ORDERS WILL BE RIGIDLY ENFORCED.

NO CONNECTIONS FOR THE DISPOSAL OF INDUSTRIAL WASTES SHALL BE MADE TO SEWERS SHOWN ON THESE DRAWINGS WITHOUT WRITTEN PERMISSION FROM THE CHIEF ENGINEER AND GENERAL MANAGER OF THE COUNTY SANITATION DISTRICTS.

NO CHARGE FOR CONNECTIONS
Return of Plans 11/15/62

P.C. 6283 PAGE 2

NO CHARGE FOR CONNECTIONS

32766

