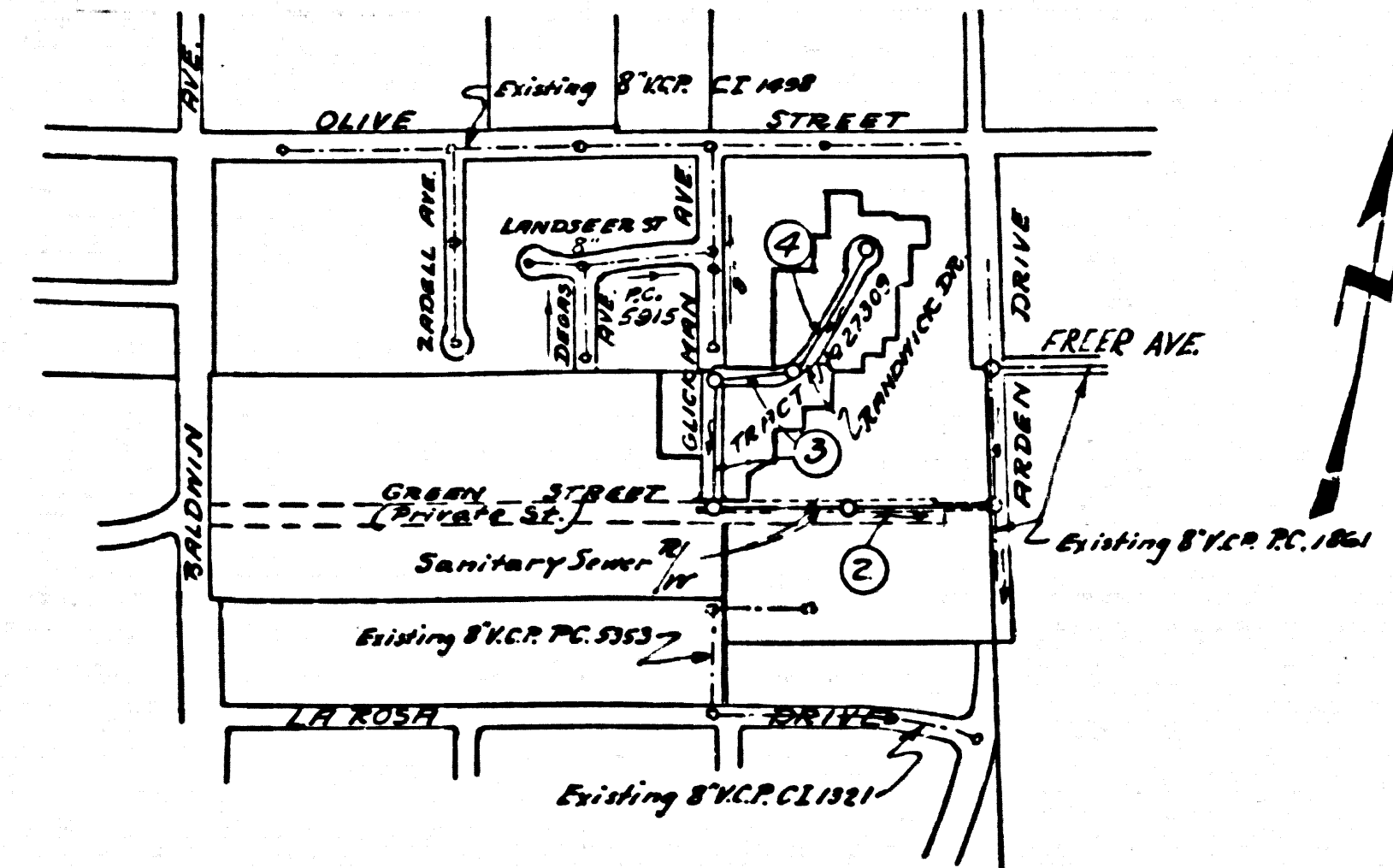


TEMPLE CITY BLDG. DIST. NO. 5.08

PROFILE ALIGNMENT AND GRADE OF
SANITARY SEWERS PAGE 1
 TO BE CONSTRUCTED IN
 TRACT NO 27309



INDEX MAP
 Scale 1"=600'
 TRACT No 27309
 P.C. 6286

Bench Mark
 S.G. 611 Elev. 338.795
 5' x 5' in W. cb. of Baldwin Ave.
 ± 3' S. of cb. ref. @ S.W. cor. of
 Baldwin Ave. & Miloann St.
 mkd. TE 183.
 Arcadia Quad. 1955

CONNECTION CHARGES
 AS INDICATED
 C. S. Albertson 1/16/62

- NOTES:
1. PROVIDE STAKES ON THE PROPERTY LINE OR PROPERTY LINES PRODUCED AT RIGHT ANGLES TO THE SEWER LINE AT THE CENTER LINE OF EACH MANHOLE.
 2. NO REPRESENTATIVE OF THE CITY ENGINEER WILL SURVEY OR LAY OUT ANY PORTION OF THE WORK.
 3. THE PRIVATE ENGINEER SHALL FURNISH THE CITY ENGINEER WITH GRADE SHEETS AND STATIONING FOR ALL HOUSE LATERALS AND Y BRANCHES AND SHALL PROVIDE STAKES FOR THEM AT THEIR PROPER LOCATIONS WITH STATIONING PLAINLY MARKED. ALL HOUSE LATERALS SHALL BE CONSTRUCTED IN A STRAIGHT ALIGNMENT UNLESS OTHERWISE INDICATED IN WRITING BY THE PRIVATE ENGINEER.
 4. THE PRIVATE ENGINEER SHALL FURNISH THE HOUSE LATERAL DEPTH AT THE PROPERTY LINE BELOW THE TOP OF CURB ELEVATION FOR EACH HOUSE LATERAL ON THE GRADE SHEET.
 5. NO REVISIONS SHALL BE MADE IN THESE PLANS WITHOUT THE APPROVAL OF THE CITY ENGINEER.
 6. USE STANDARD MANHOLE FRAMES AND COVERS, S-117.
 7. USE EXTRA STRENGTH PIPE. ALL PIPE IS STANDARD DEPTH.
 8. USE CEMENT MORTAR OR MECHANICAL COMPRESSION JOINTS FOR ALL V.C.P. JOINTS PER SPECS. SECS. 34 & 41. IN MAIN LINE.
 9. RESURFACE ALL TRENCH WITHIN PAVED AREA TO MEET L.A. COUNTY ROAD DEPT. OR CALIF. STATE HIGHWAY REQUIREMENTS IN ACCORDANCE WITH PERMITS.
 10. IF A PINGER DOLE IS WITHIN THREE FEET OF THE SEWER, THE SEWER SHALL BE ENCASED, PER S-417, CASE II.
 11. HOUSE LATERALS TO BE CONSTRUCTED WITH INVERTS AT PROPERTY LINE 6 FEET BELOW CURB GRADE EXCEPT AS NOTED.
 12. FOR ALLOWABLE LEAKAGE TEST USE FORMULA NO. 1, SPECS. SEC. 34.
 13. THE CONTRACTOR SHALL NOTIFY THE CONSTRUCTION DIVISION BY TELEPHONE, MADISON 3-474, EXT. 825X AT LEAST TWENTY-FOUR HOURS BEFORE STARTING ANY WORK UNDER THIS CONTRACT.
 14. MANHOLE SHALL BE BRICK SEWER STRUCTURES PER S-G-104 PRECAST CONCRETE MANHOLES PER S-G-135 OR S-G-173 MAY BE USED AS AN ALTERNATE IN LOCATIONS APPROVED BY THE CITY ENGINEER.
 15. USE MECHANICAL COMPRESSION JOINTS FOR ALL V.C.P. HOUSE LATERALS PER SPECS., SEC. 36.
 16. SPECIFICATION DATED MAY 25, 1962 APPLY IN THE CONSTRUCTION OF THIS PROJECT.
 17. WHENEVER GROUND WATER IS ENCOUNTERED DURING THE CONSTRUCTION OF THE SEWERS, THE V.C.P. JOINTS SHALL BE OF JOINT COMPOUND PER SPECS., SECS. 33 AND 40, OR MECHANICAL COMPRESSION JOINTS PER SPECS., SEC. 36.
 18. IF DURING THE COURSE OF CONSTRUCTION IT IS DETERMINED THAT THERE IS LESS THAN FOUR FEET OF COVER OVER THE TOP OF A MAIN LINE OR HOUSE LATERAL V.C.P. SEWER, WHICH IS NOT INDICATED ON THE PLANS, THE PIPE SHALL BE ENCASED PER S-417, CASE II, UNLESS OTHERWISE APPROVED BY THE CITY ENGINEER.
 19. ALL STATE AND LOCAL TRENCH SAFETY ORDINANCES WILL BE RIGIDLY ENFORCED.

PRIVATE CONTRACT NO. 6286

W.S. 44, D-5
 2 SHEETS; 4 PAGES
 SCALE: VERT. 1"=4'
 HORIZ. 1"=40'
 JUNE, 1962
 PREPARED IN THE OFFICES OF
 HILLCREST ENGINEERING CORPORATION
 BY: *Paul H. Foyt*
 REG. C. E. NO. 1832
 FOR LEGEND SEE PLAN NO. S-A-64

NOTE:
 GRADES TO WHICH THIS IMPROVEMENT IS TO BE CONSTRUCTED ARE SHOWN ON PLANS AND PROFILES. GRADE POINTS FOR TOP OF CURB, CENTER LINE OF STREETS, OR CENTER LINE OF ALLEYS ARE SHOWN BY CIRCLES ON PROFILE. AT ALL POINTS BETWEEN DESIGNATED POINTS THE GRADE SHALL BE ESTABLISHED SO AS TO CONFORM TO A STRAIGHT LINE DRAWN BETWEEN SAID DESIGNATED POINTS.
 ELEVATIONS ARE IN FEET ABOVE U.S.C. & G.S. SEA LEVEL DATUM OF 1929.
 THIS DRAWING AND THE DATA HEREON ARE HEREBY MADE A PART OF THE SPECIFICATIONS.
 WORK SHALL BE CONSTRUCTED ACCORDING TO SPECIFICATIONS ON FILE IN THE OFFICE OF THE CITY ENGINEER AND SHALL BE PROSECUTED ONLY IN THE PRESENCE OF THE CITY ENGINEER.
 BEFORE WORK CAN BE STARTED, THE CONTRACTOR MUST OBTAIN A PERMIT TO EXCAVATE IN CITY STREETS FROM THE L.A. COUNTY ROAD DEPT., DISTRICT OFFICE NO. 1, AND MAKE A DEPOSIT WITH THE CITY OF TEMPLE CITY, CITY ENGINEER'S OFFICE, SUFFICIENT TO COVER THE COST OF CONSTRUCTION INSPECTION AND RECORD PLANS.
 APPROVAL OF THIS PLAN BY THE CITY OF TEMPLE CITY DOES NOT CONSTITUTE A REPRESENTATION AS TO THE ACCURACY OF THE LOCATION OF OR THE EXISTENCE OR NON-EXISTENCE OF ANY UNDERGROUND UTILITY PIPE, OR STRUCTURE WITHIN THE LIMITS OF THIS PROJECT. THIS NOTE APPLIES TO ALL PAGES.
 IF WORK IS TO BE DONE IN A STATE HIGHWAY, A PERMIT MUST BE OBTAINED FROM THE STATE OF CALIFORNIA, DIVISION OF HIGHWAYS, 120 SOUTH SPRING STREET.

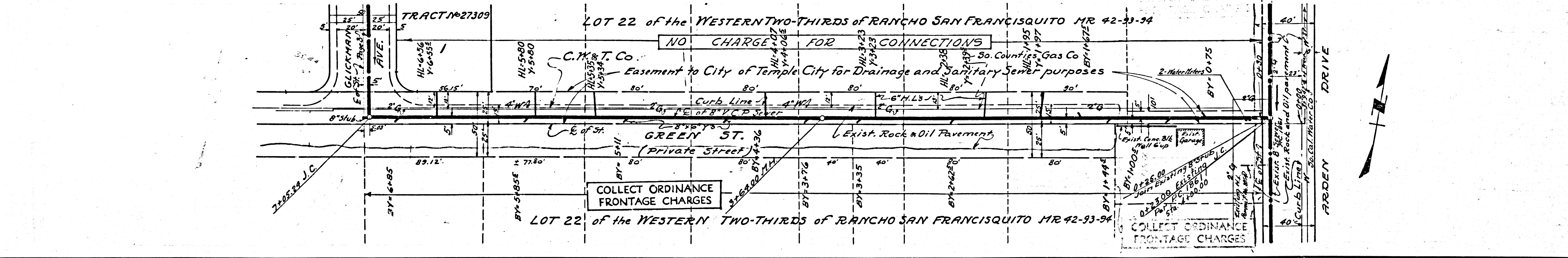
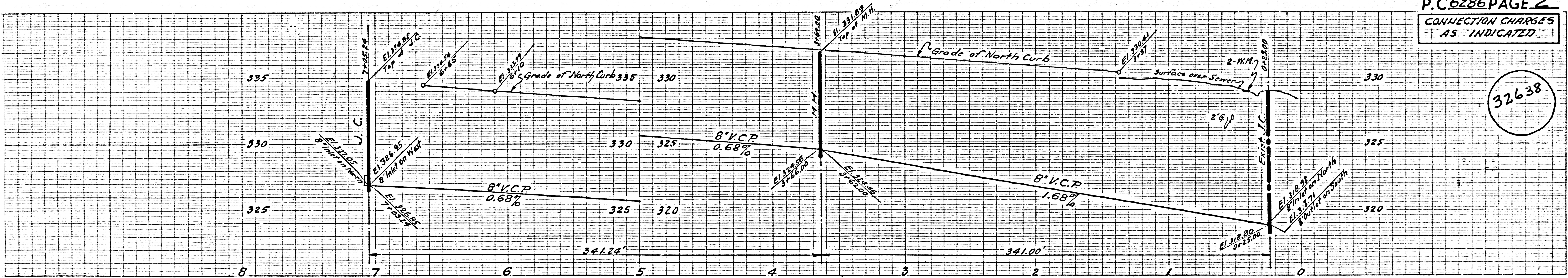
CITY OF TEMPLE CITY, CALIFORNIA
 APPROVED, JOHN A. LAMBIE, CITY ENGINEER
 APPROVED, *John D. Markham*, CHIEF ENGINEER
 CO. SAN. DIST. NO. 15
 BY: *Paul H. Foyt*, SANITARY ENGINEER
 CHECKED BY: *SK Wades* 10-12-62
 OFFICE OF CITY ENGINEER, REG. C. E. NO. 2906
 SUBMITTED: *N. F. Brander*
 SAN GABRIEL VALLEY REGIONAL ENGINEER

2ND REVISION NOTE
 Added Stalling Manhole at
 Sta. 5+66, and encasement
 of M.L. & H.L. sewer, Page 3B
 APPROVED: *N.F.B.* 12-12-62

NO CONNECTIONS FOR THE DISPOSAL OF
 INDUSTRIAL WASTES SHALL BE MADE TO
 SEWERS SHOWN ON THESE DRAWINGS
 WITHOUT WRITTEN PERMISSION FROM THE
 CHIEF ENGINEER AND GENERAL MANAGER
 OF THE COUNTY SANITATION DISTRICTS.

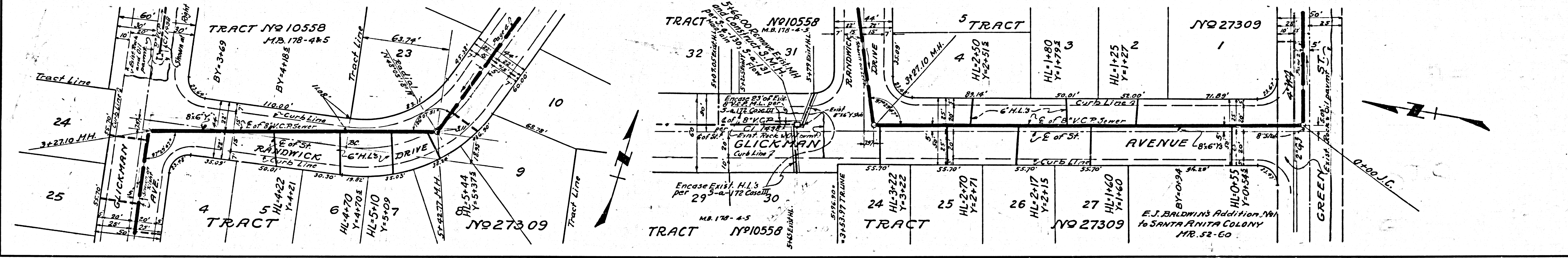
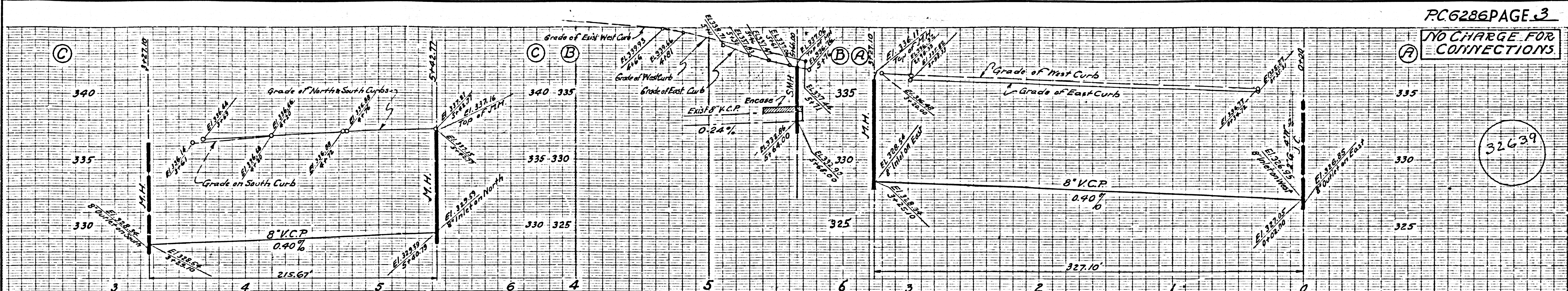
REVISION NOTE
 Letter of Participation
 changed.
 APPROVED: *N.F.B.* 12-3-62

P.C. 6286 PAGE 2
 CONNECTION CHARGES
 AS INDICATED



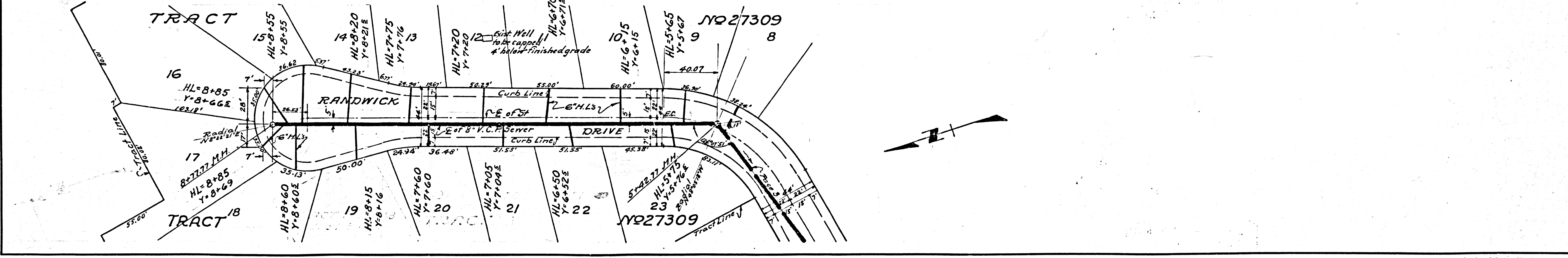
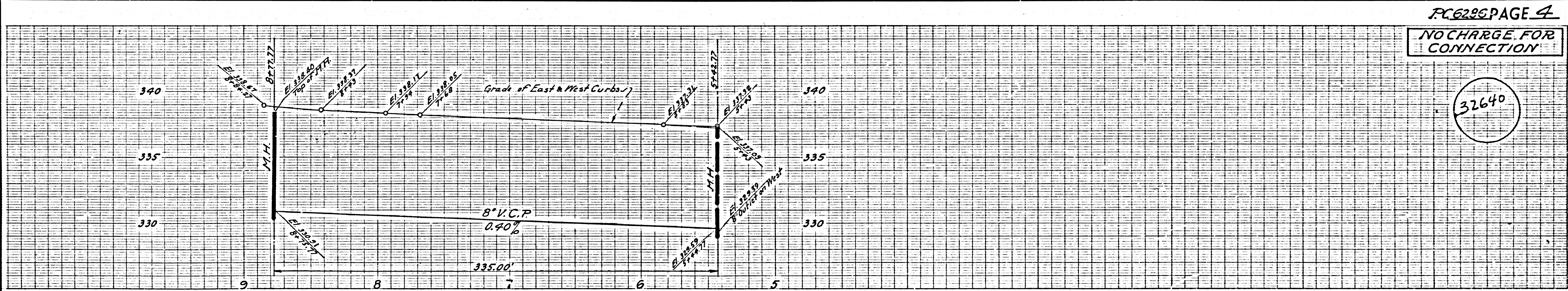
NO CHARGE FOR CONNECTIONS

32639



NO CHARGE FOR CONNECTION

32640



P.C. 6286 TRACT NO 5209