

DOUBLE SCALE  
NEWHALL BLDG. DIST. NO. 8.2

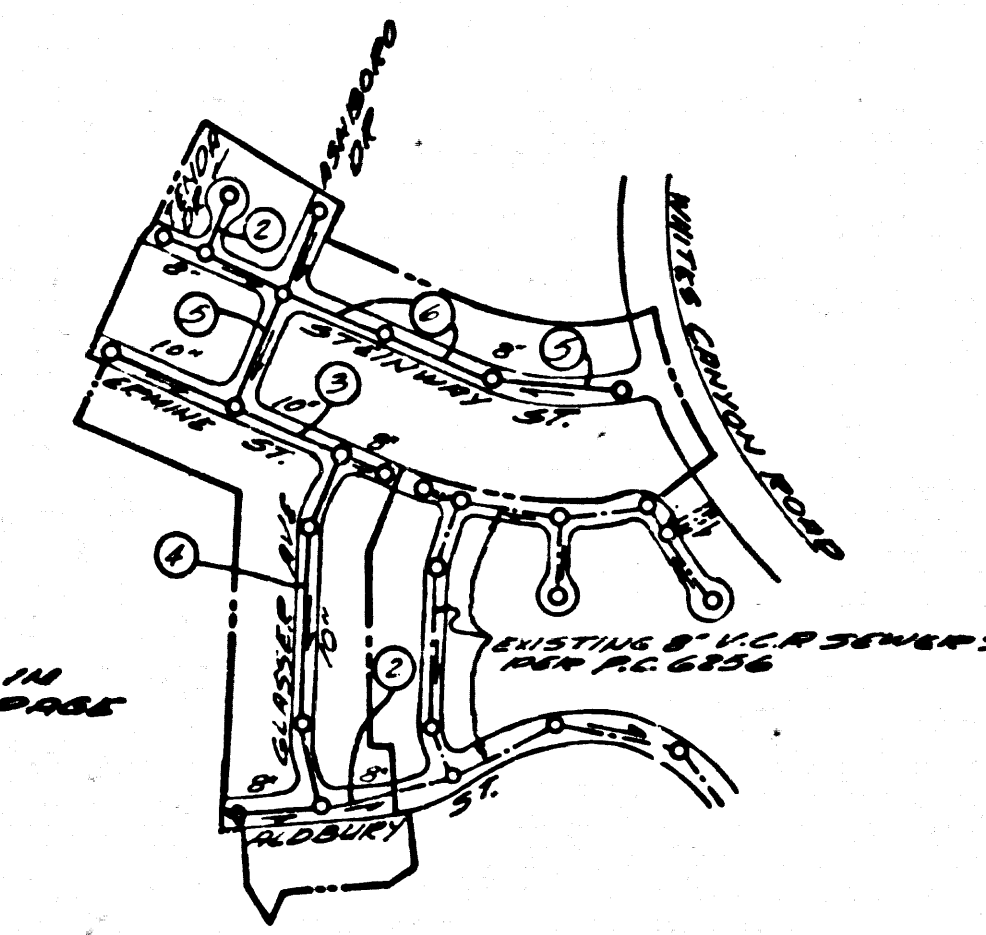
PROFILE ALIGNMENT AND GRADE OF P.C. 6288  
SANITARY SEWERS PAGE 1  
CONSTRUCTED IN J.N. 0358.63

**BENCH MARK**  
Std. U.S.C. & G.S. Brass Disc Set in a Conc. Mon. & Stamped D-487-1955  
Located 2.3 Mile N.W. of Intersection of Camp Blaney Road at Salsada  
Canyon Road at the Intersection of Camp Blaney Road and a Paved Road  
Leading to the G.S. Ranch Airport at N.E. Corner of Intersection and next  
to a White Witness Post. Road Department Elevation = 1344.672

- NOTES:
1. PROVIDE STAKES ON THE PROPERTY LINE OR PROPERTY LINES PRODUCED AT RIGHT ANGLES TO THE SEWER LINE AT THE CENTER LINE OF EACH MANHOLE.
  2. NO REPRESENTATIVE OF THE COUNTY ENGINEER WILL SURVEY OR LAY OUT ANY PORTION OF THE WORK.
  3. THE PRIVATE ENGINEER SHALL BE RESPONSIBLE FOR THE LOCATION OF ALL HOUSE LATERALS AND FOR THE LOCATION OF ALL HOUSE LATERALS WITH THE PROPERTY LINES AND THE LOCATION OF ALL HOUSE LATERALS SHALL BE CONSTRUCTED IN A STRAIGHT ALIGNMENT AT RIGHT ANGLES FROM THE MAIN LINE SEWER EXCEPT AS SHOWN ON THE PLANS. HOUSE LATERALS FROM CHIMNEYS SHALL NOT HAVE AN ANGLE OF LESS THAN 45° WITH THE MAIN LINE SEWER. ANY CHANGE IN ALIGNMENT SHALL BE REQUESTED IN WRITING BY THE PRIVATE ENGINEER.
  4. THE PRIVATE ENGINEER SHALL FURNISH THE HOUSE LATERAL DEPTH AT THE PROPERTY LINE BELOW THE TOP OF CURB ELEVATION FOR EACH HOUSE LATERAL ON THE GRADE SHEET.
  5. NO REVISIONS SHALL BE MADE IN THESE PLANS WITHOUT THE APPROVAL OF THE COUNTY ENGINEER.
  6. USE STANDARD MANHOLE FRAMES AND COVERS, S-117, EXCEPT AS NOTED.
  7. USE EXTRA STRENGTH PIPE. ALL PIPE IS STANDARD DEPTH, EXCEPT AS NOTED.
  8. USE MECHANICAL COMPRESSION JOINTS FOR ALL V.C.P. JOINTS PER SPECS, SECS. 34 & 48.
  9. RESURFACE ALL TRENCH WITHIN PAVED AREA TO MEET L.A. COUNTY ROAD DEPT. OR CALIF. STATE HIGHWAY REQUIREMENTS IN ACCORDANCE WITH PERMITS.
  10. ENCASE FOUR FEET OF SEWER AT POINTS OF INTERFERENCE WITH POLES, CASE III, S-172.
  11. HOUSE LATERALS TO BE CONSTRUCTED WITH INVERTS AT PROPERTY LINE 6 FEET BELOW CURB GRADE EXCEPT AS NOTED.
  12. FOR ALLOWABLE LEAKAGE TEST USE FORMULA NO. 1, SPECS, SEC. 54.
  13. MANHOLE TOPS IN UNIMPROVED RIGHTS-OF-WAY TO BE SIX INCHES ABOVE FINISHED GRADE.
  14. THE CONTRACTOR SHALL NOTIFY THE CONSTRUCTION DIVISION BY TELEPHONE, MADISON 9474, 24 HRS. AT LEAST TWENTY-FOUR HOURS BEFORE STARTING ANY WORK UNDER THIS CONTRACT.
  15. MANHOLES SHALL BE CAST-IRON STRUCTURES PER S.A. 108 PERMITS SPECIFIED DIMENSIONS PER S.A. 108 PERMITS EXCEPT AS NOTED IN CERTAIN AREAS BY THE COUNTY ENGINEER.
  16. NO CONSTRUCTION SHALL BE PERMITTED IN FILLED AREAS UNLESS APPROVED BY THE COUNTY ENGINEER'S DEPARTMENT THAT RELATIVE TO THE CONSTRUCTION IS LESS THAN 20% THE SEWER MUST BE CANCELLED AS SHOWN ON THE PLANS PER S.O. 126.
  17. IF CONSTRUCTION IS GREATER THAN 20% CONCRETE OR SPECIAL M.M. BRICKS ARE NOT PERMITTED, NONSET MECHANICAL COMPRESSION JOINTS IN FILLED AREAS.
  18. UPON ACCEPTABLE CERTIFICATION TO THE CONSTRUCTION DIVISION OF THE COUNTY ENGINEER THAT RELATIVE TO THE CONSTRUCTION IS GREATER THAN 20% M.M. BRICKS PER S.O. 126 SHALL NOT BE REQUIRED.
  19. STANDARD SPECIFICATIONS DATED MAY 25, 1962 APPLY IN CONSTRUCTION OF THIS PROJECT.
  20. ALL BRICKWORK OR MANHOLES SHALL BE SET IN DEPTH SHALL BE 6" IN THICKNESS.
  21. ALL STATE AND LOCAL TRENCH SAFETY DEVICES WILL BE RIGIDLY ENFORCED.

TRACT NO 27336  
PRIVATE CONTRACT NO. 6288  
W.S. 62  
3 SHEETS: 6 PAGES  
SCALE: VERT. 1"=8'  
HORIZ. 1"=40'  
JAN., 1963  
PREPARED IN THE OFFICES OF  
**MCINTIRE & QUIROS**  
By: *Alan Quiros*  
REG. C. E. NO. 3548  
FOR LEGEND SEE PLAN NO. S.A-64

33461

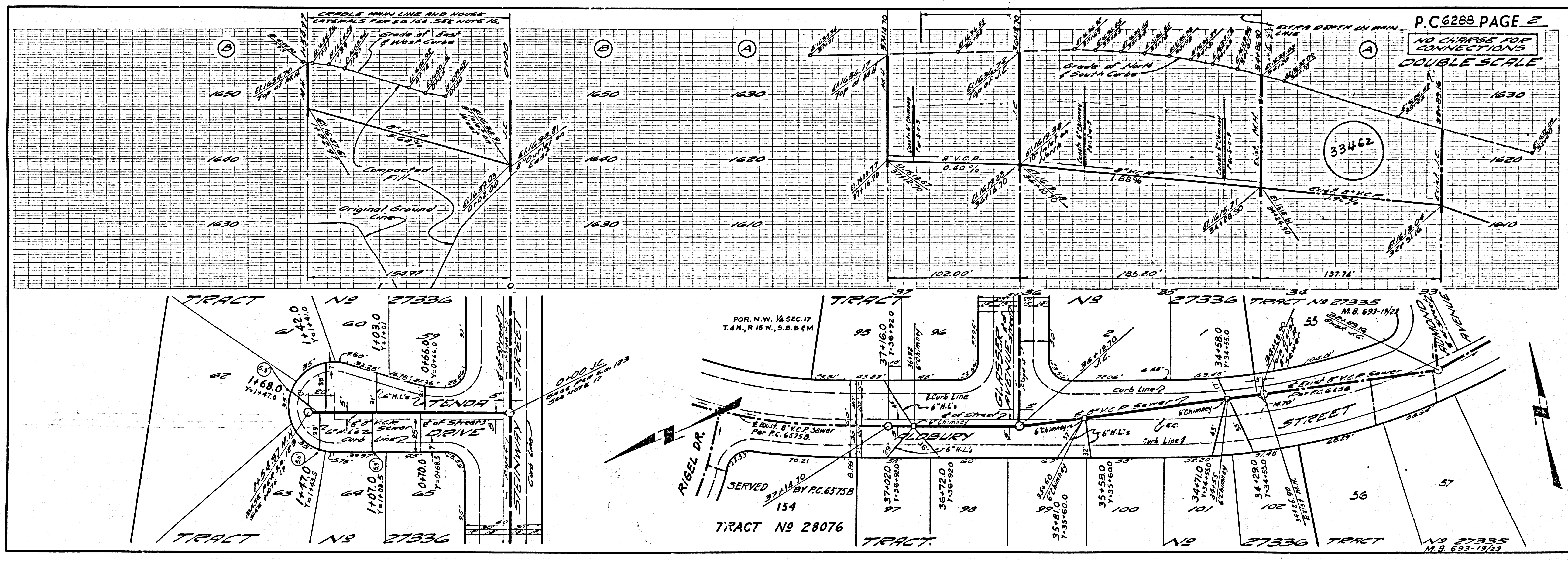


NO CHARGE FOR CONNECTIONS  
-Money for 2/1/63

NOTE:  
GRADES TO WHICH THIS IMPROVEMENT IS TO BE CONSTRUCTED ARE SHOWN ON PLANS AND PROFILES. GRADE POINTS FOR TOP OF CURB, CENTER LINE OF STREETS OR CENTER LINE OF ALLEYS ARE SHOWN BY CIRCLES ON PROFILES. AT ALL POINTS BETWEEN DESIGNATED POINTS THE GRADE SHALL BE ESTABLISHED SO AS TO CONFORM TO A STRAIGHT LINE DRAWN BETWEEN SAID DESIGNATED POINTS.  
ELEVATIONS ARE IN FEET ABOVE U.S.C. & G.S. SEA LEVEL DATUM OF 1929.  
THIS DRAWING AND THE DATA HEREON ARE HEREBY MADE A PART OF THE SPECIFICATIONS.  
WORK SHALL BE CONSTRUCTED ACCORDING TO SPECIFICATIONS ON FILE IN THE OFFICE OF THE COUNTY ENGINEER AND SHALL BE PROSECUTED ONLY IN THE PRESENCE OF THE COUNTY ENGINEER.  
NO WORK CAN BE STARTED, THE CONTRACTOR MUST OBTAIN A PERMIT TO EXCAVATE IN COUNTY STREETS FROM THE L.A. COUNTY ROAD DEPT. DISTRICT OFFICE NO. 5 AND PAY \$75.00 WITH THE COUNTY INSPECTION ROOM \$15.00 FOR WEST SECOND STREET 7". SUFFICIENT TO COVER THE COST OF CONSTRUCTION INSPECTION AND RECORD PLANS.  
APPROVAL OF THIS PLAN BY THE COUNTY OF LOS ANGELES DOES NOT CONSTITUTE A REPRESENTATION AS TO THE ACCURACY OF THE LOCATION OR THE EXISTENCE OR NON-EXISTENCE OF ANY UNDERGROUND UTILITY PIPE OR STRUCTURE WITHIN THE LIMITS OF THIS PROJECT. THIS NOTE APPLIES TO ALL PAGES.  
IF WORK IS TO BE DONE IN A STATE HIGHWAY, A PERMIT MUST BE OBTAINED FROM THE STATE OF CALIFORNIA, DIVISION OF HIGHWAYS, 120 SOUTH SPRING STREET.

COUNTY OF LOS ANGELES, CALIFORNIA  
APPROVED, JOHN A. LAMBIE, COUNTY ENGINEER  
APPROVED, J.D. PARKHURST, CHIEF ENGINEER  
By: *John A. Lambie* REG. C. E. NO. 26  
By: *J.D. Parkhurst* CHIEF ENGINEER  
CHECKED BY: *Alan Quiros* REG. C. E. NO. 3548  
OFFICE OF COUNTY ENGINEER, REG. C. E. NO. 5464  
RECOMMENDED *R.M. Dick*  
OUTSLOPE VALLEY REGIONAL ENGINEER

NO CONNECTIONS FOR THE DISPOSAL OF INDUSTRIAL WASTES SHALL BE MADE TO SEWERS SHOWN ON THESE DRAWINGS WITHOUT WRITTEN PERMISSION FROM THE CHIEF ENGINEER AND GENERAL MANAGER OF THE COUNTY SANITATION DISTRICTS.



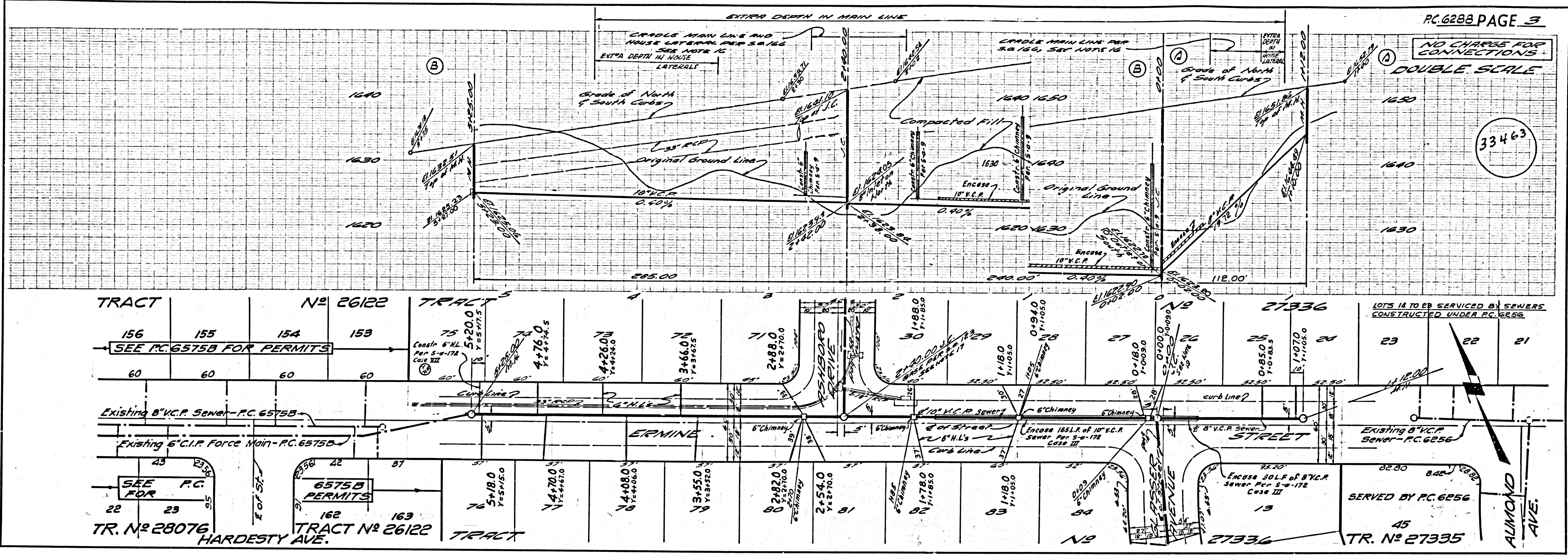
P.C. 6288 PAGE 2  
NO CHARGE FOR CONNECTIONS  
DOUBLE SCALE

33462



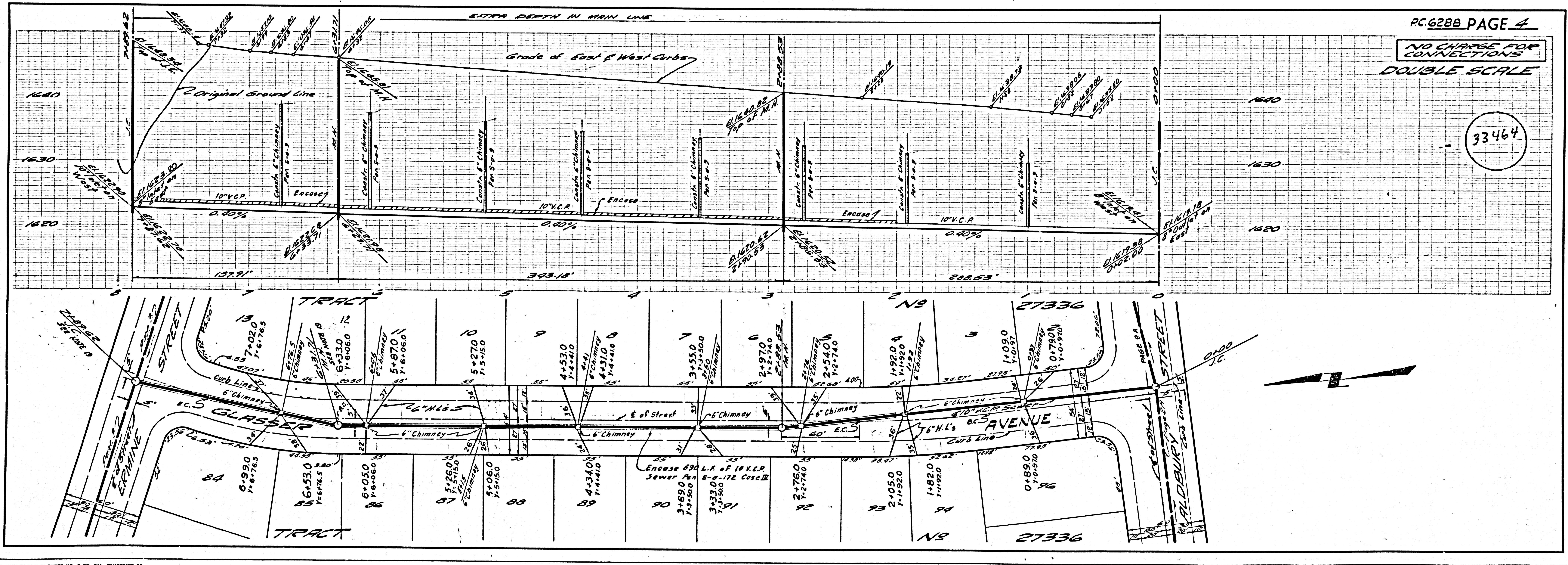
NO CHARGE FOR CONNECTIONS  
DOUBLE SCALE

33463



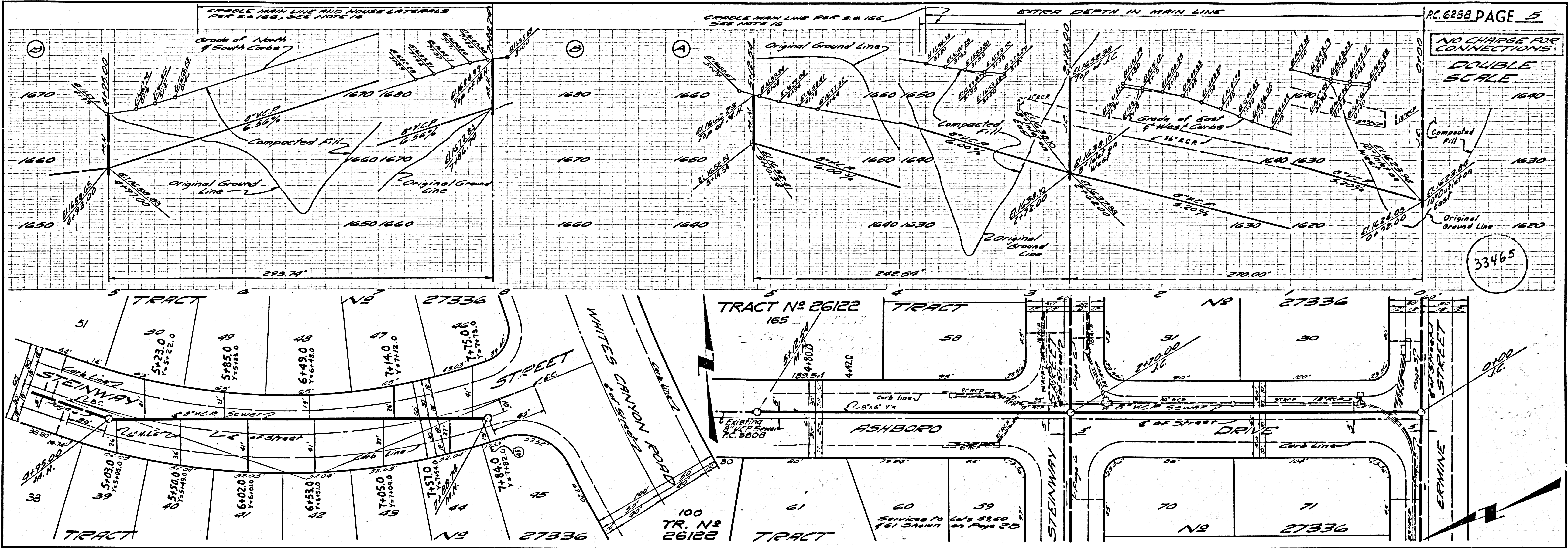
NO CHARGE FOR CONNECTIONS  
DOUBLE SCALE

33464



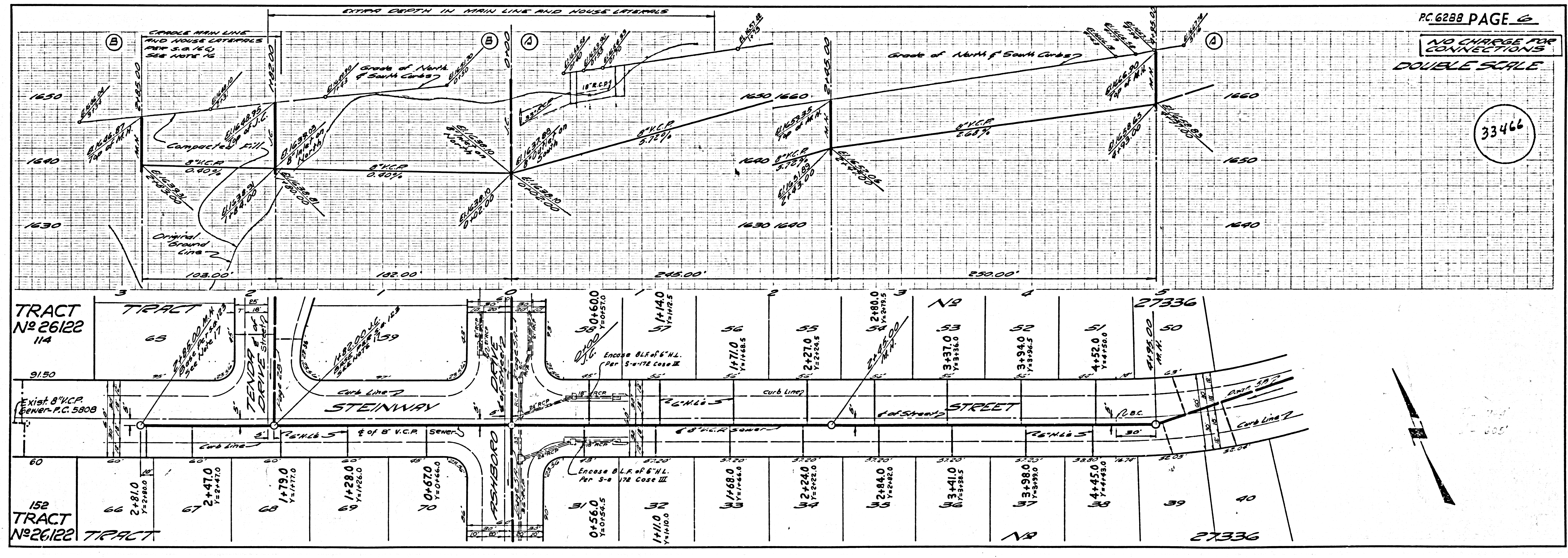


NO CHARGE FOR CONNECTIONS  
DOUBLE SCALE



33465

NO CHARGE FOR CONNECTIONS  
DOUBLE SCALE



33466