

Bench Marks
 574373, Sp.M. & L. in Type B Island Transition Cb.
 ±41' N'14 of Hawthorne Blvd. ±49' E'14 of
 proposed Grayslake Rd. ±84' W'14 of
 Woodbrook Rd. ELEVATION 1091.527
 PALOS VERDES QUAD. -1955

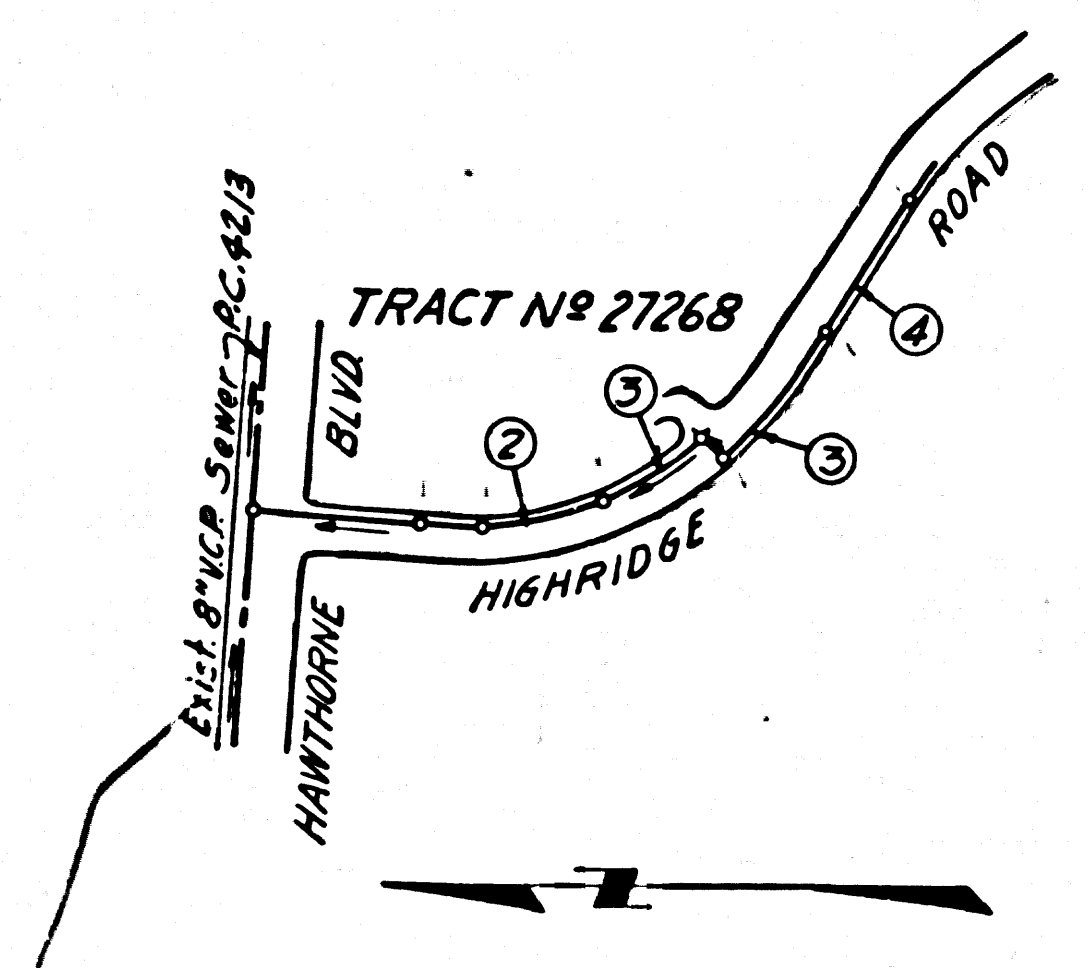
DOUBLE SCALE
 LOMITA BLDG. DIST. NO. 12

PROFILE ALIGNMENT AND GRADE OF P.C. 6289
 SANITARY SEWERS PAGE 1
 TO BE CONSTRUCTED IN J.N. 0358.64

HIGHRIDGE ROAD
 PRIVATE CONTRACT NO. 6289

W.S. 27
 2 SHEETS; 4 PAGES
 SCALE: VERT. 1" = 8' JULY, 1962
 PREPARED IN THE OFFICES OF
 ENGINEERING SERVICE CORPORATION
 BY: E.F. Zering
 REG. C. E. NO. 3692
 FOR LEGEND SEE PLAN NO. S-A-64

32345



NO CONNECTIONS FOR THE DISPOSAL OF INDUSTRIAL WASTES SHALL BE MADE TO SEWERS SHOWN ON THESE DRAWINGS WITHOUT WRITTEN PERMISSION FROM THE CHIEF ENGINEER AND GENERAL MANAGER OF THE COUNTY SANITATION DISTRICTS.

ISSUE NO PERMITS UNTIL STREET IS DEDICATED

NO CHARGE FOR CONNECTIONS
 L. Carter

- NOTES:
- PROVIDE STAKES ON THE PROPERTY LINE OR PROPERTY LINES PRODUCED AT RIGHT ANGLES TO THE SEWER LINE AT THE CENTER LINE OF EACH MANHOLE.
 - NO REPRESENTATIVE OF THE COUNTY ENGINEER WILL SURVEY OR LAYOUT ANY PORTION OF THE WORK.
 - THE OWNER OR HIS AUTHORIZED REPRESENTATIVE SHALL FURNISH THE COUNTY ENGINEER WITH GRADE SHEETS AND STATION FOR ALL HOUSE LATERALS AND Y BRANCHES AND SHALL PROVIDE STAKES FOR THEM AT THEIR PROPER LOCATIONS WITH STATIONING PLAINLY MARKED. ANY CHANGE IN LOCATION SHALL BE REQUESTED IN WRITING BY THE OWNER OR HIS REPRESENTATIVE.
 - NO REVISIONS SHALL BE MADE IN THESE PLANS WITHOUT THE APPROVAL OF THE COUNTY ENGINEER.
 - USE STANDARD MANHOLE FRAMES AND COVERS, S.A.-117, EXCEPT AS NOTED.
 - USE EXTRA STRENGTH PIPE, ALL PIPE IS STANDARD DEPTH, EXCEPT AS NOTED.
 - USE MECHANICAL COMPRESSION JOINTS FOR ALL VITRIFIED CLAY PIPE PER SPECS, SEC. 56, 48 & 49.
 - RESURFACE ALL TRENCH WITHIN PAVED AREA TO MEET L. A. COUNTY ROAD DEPT., OR CALIF. STATE HIGHWAY DEPT. REQUIREMENTS IN ACCORDANCE WITH PERMITS.
 - ENCASE FOUR FEET OF SEWER AT POINTS OF INTERFERENCE WITH POLES, S.A.-119.
 - HOUSE LATERALS TO BE CONSTRUCTED WITH INVERTS AT PROPERTY LINE 6 FEET BELOW CURB GRADE EXCEPT AS NOTED.
 - ALL STRUCTURES SHALL BE RICE SEWER STRUCTURES, S.A. 104, PRECAST REINFORCED CONCRETE MANHOLES PER S.A.-135 OR S.A. 123 MAY BE USED ALTERNATELY IN LOCATIONS APPROVED BY THE COUNTY ENGINEER.
 - FOR ALLOWABLE LEAKAGE TEST USE FORMULA NO. 1 PER SPECS, SEC. 54.
 - MANHOLE TOPS IN UNIMPROVED RIGHTS-OF-WAY TO BE 6" ABOVE FINISHED GRADE.
 - THE PRIVATE ENGINEER IS TO FURNISH THE HOUSE LATERAL DEPTH AT THE PROPERTY LINE BELOW THE TOP CURB ELEVATION FOR EACH HOUSE LATERAL ON THE GRADE SHEET.
 - THE CONTRACTOR SHALL NOTIFY THE CONSTRUCTION DIVISION BY TELEPHONE, MADISON 9-4747 EXT. 81531 AT LEAST 48 HOURS BEFORE STARTING ANY WORK UNDER THIS CONTRACT.
 - STANDARD SPECIFICATIONS DATED MAY 25, 1962 APPLY IN THE CONSTRUCTION OF THIS PROJECT.
 - (a) NO CONSTRUCTION WILL BE PERMITTED IN FILLED AREAS UNLESS ACCEPTABLE CERTIFICATION IS SUBMITTED TO THE CONSTRUCTION DIVISION OF THE COUNTY ENGINEERS DEPARTMENT THAT RELATIVE COMPACTION IS GREATER THAN 90% (b) IF COMPACTION IS LESS THAN 90%, THE SEWER MUST BE CRADLED PER S-0-160 OR HAVE A SPECIAL BASE COURSE PER S-0-170, CASE III. SPECIAL MANHOLE BASES MUST BE INSTALLED PER S-0-125 AS INDICATED ON THE PLANS. (c) IF COMPACTION IS GREATER THAN 90% GRADING AND SPECIAL MANHOLE BASES ARE NOT REQUIRED. HOWEVER, MECHANICAL COMPRESSION JOINTS MUST BE USED IN FILLED AREAS.

NOTES:
 GRADES TO WHICH THIS IMPROVEMENT IS TO BE CONSTRUCTED ARE SHOWN ON PLANS AND PROFILES. GRADE POINTS FOR TOP OF CURB, CENTER LINE OF STREETS OR CENTER LINE OF ALLEYS ARE SHOWN BY CIRCLES ON PROFILES. AT ALL POINTS BETWEEN DESIGNATED POINTS THE GRADE SHALL BE ESTABLISHED SO AS TO CONFORM TO A STRAIGHT LINE DRAWN BETWEEN SAID DESIGNATED POINTS.
 ELEVATIONS ARE IN FEET ABOVE U.S.C. & G.S. SEA LEVEL DATUM OF 1929.
 THIS DRAWING AND THE DATA HEREON ARE HEREBY MADE A PART OF THE SPECIFICATIONS.
 WORK SHALL BE CONSTRUCTED ACCORDING TO SPECIFICATIONS ON FILE IN THE OFFICE OF THE COUNTY ENGINEER AND SHALL BE PROSECUTED ONLY IN THE PRESENCE OF THE COUNTY ENGINEER.
 BEFORE WORK CAN BE STARTED, THE CONTRACTOR MUST OBTAIN A PERMIT TO EXCAVATE IN COUNTY STREETS FROM THE L. A. COUNTY ROAD DEPT., DISTRICT OFFICE # 3 AND PAY A FEE TO THE COUNTY ENGINEER, ROOM 310 COUNTY ENGINEERS BUILDING 200 WEST STREET SUFFICIENT TO COVER THE COST OF CONSTRUCTION INSPECTION AND RECORD PLANS.
 APPROVAL OF THIS PLAN BY THE COUNTY OF LOS ANGELES DOES NOT CONSTITUTE A REPRESENTATION AS TO THE ACCURACY OF THE LOCATION OF OR THE EXISTENCE OR NON-EXISTENCE OF ANY UNDERGROUND UTILITY PIPE, OR STRUCTURE WITHIN THE LIMITS OF THIS PROJECT. THIS NOTE APPLIES TO ALL PAGES.
 IF WORK IS TO BE DONE IN A STATE HIGHWAY, A PERMIT MUST BE OBTAINED FROM THE STATE OF CALIFORNIA, DIVISION OF HIGHWAYS, 120 SOUTH SPRING STREET.

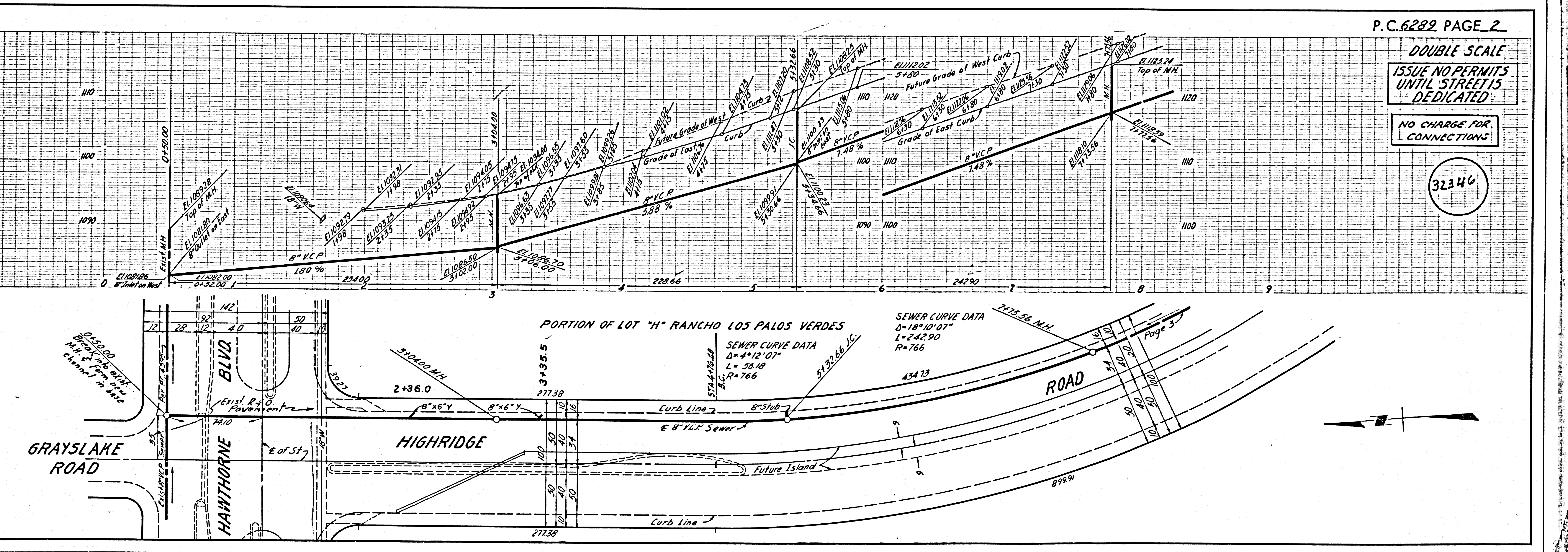
ENGINEERING SERVICE CORPORATION
 1127 W. WASHINGTON BLVD.
 LOS ANGELES 15, CALIF. RI. 9-7281

REVISIONS	
	TRACED BY: JMG
	DESIG'D BY: FKK
	CK'D BY:
	SUBMITTED:

W. O. NO.	DWG. NO.	DATE	SCALE	L.B.	F.B.
6777-93		JULY-1962	AS NOTED	L.L.	

COUNTY OF LOS ANGELES, CALIFORNIA
 APPROVED, JOHN A. LAMBIE, COUNTY ENGINEER
 APPROVED, J.D. PARKHURST, CHIEF ENGINEER
 BY: [Signatures]
 CHECKED BY: [Signature]
 OFFICE OF COUNTY ENGINEER, REG. C. E. NO. 3454

SUBMITTED BY: Cook C. Lansing
 Palos Verdes-Centinala Valley Regional Engineer

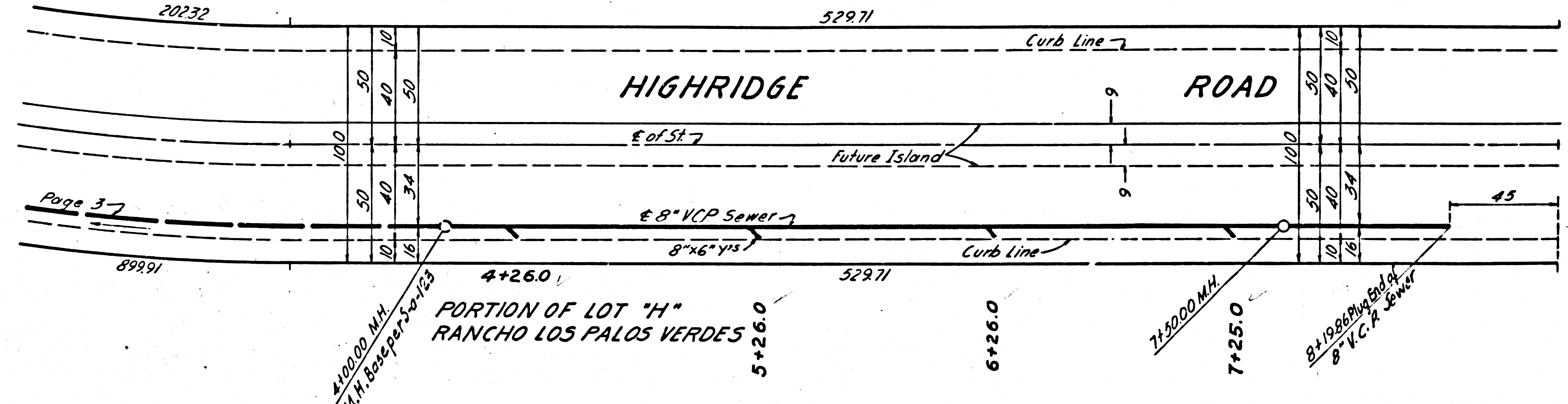
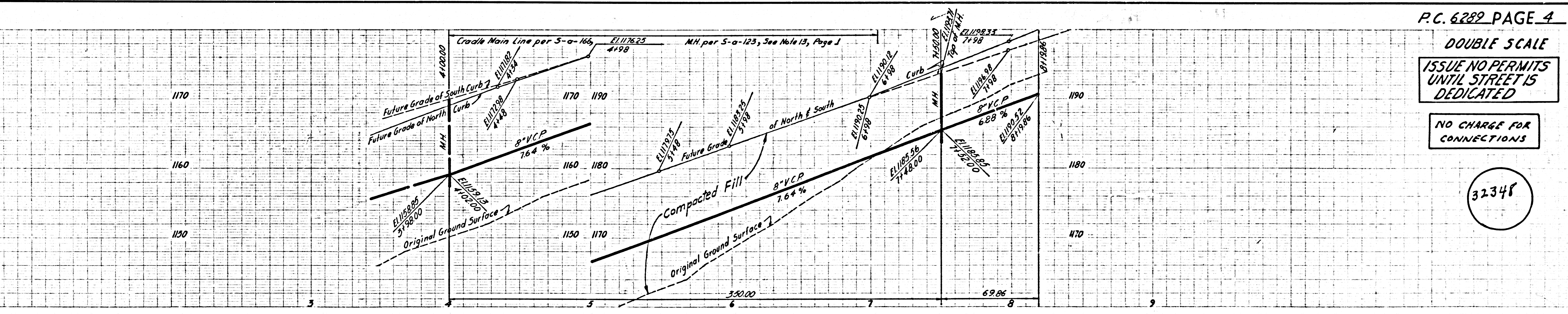
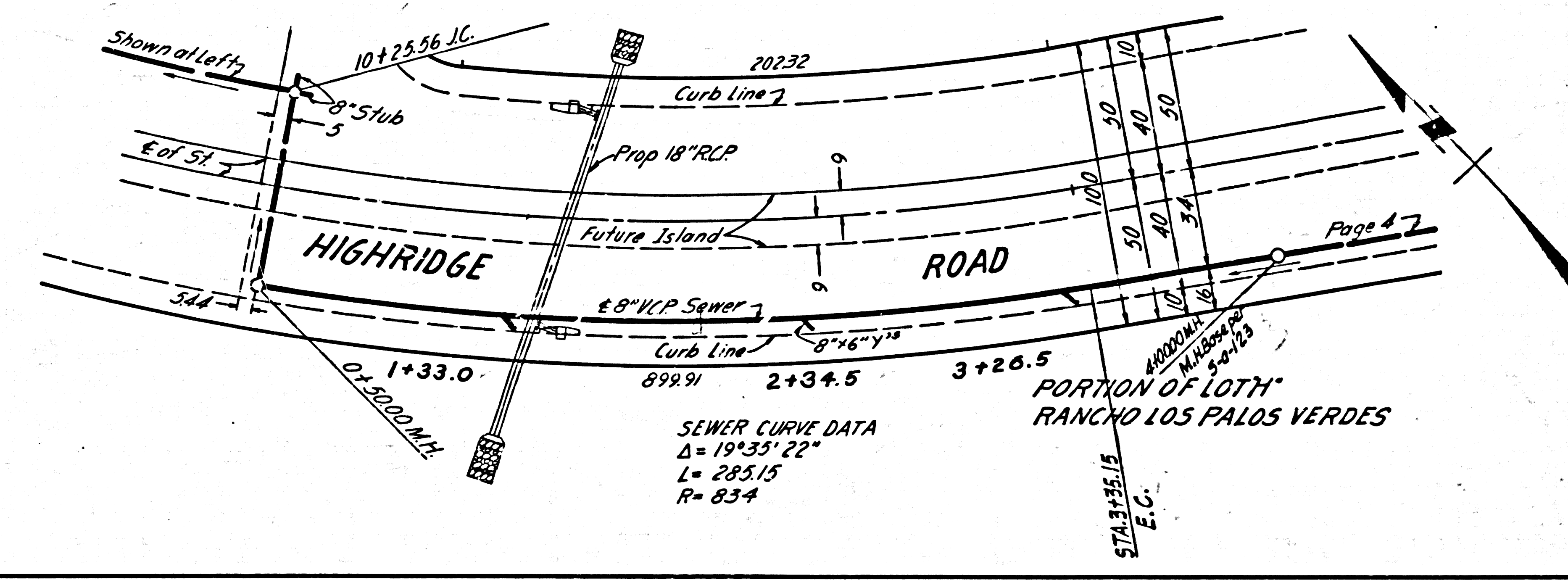
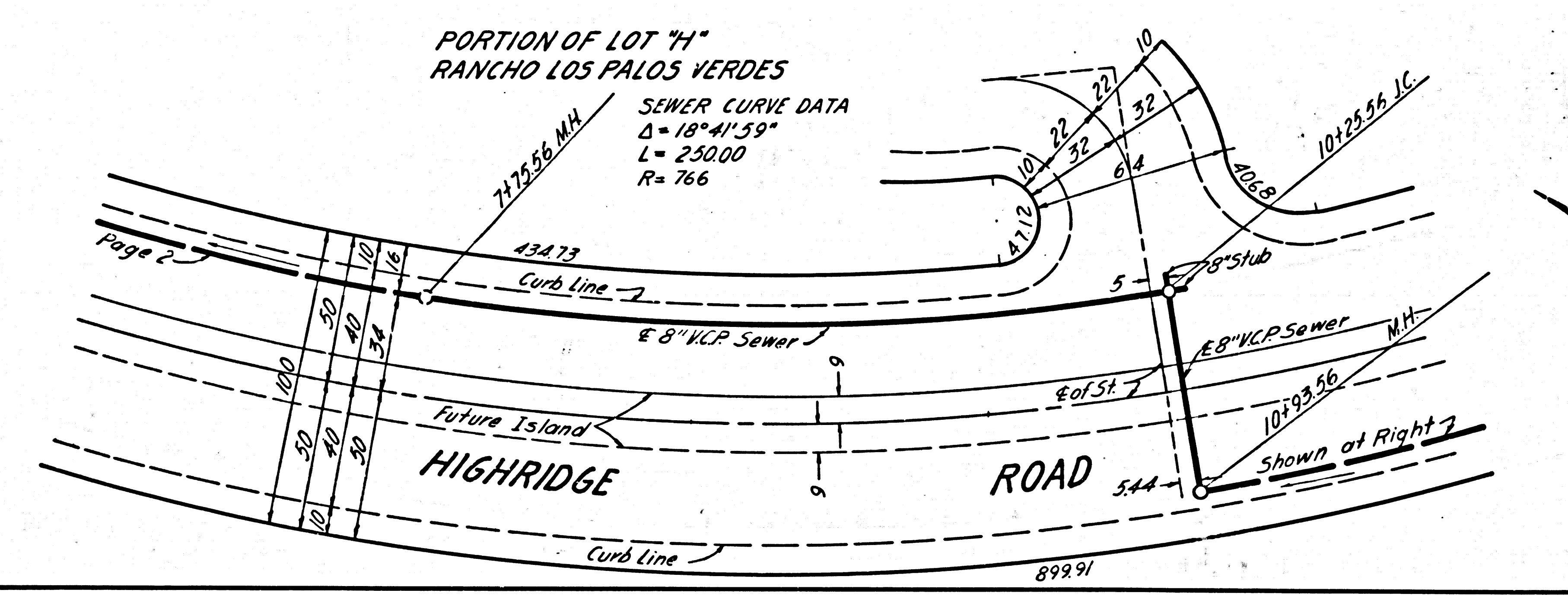
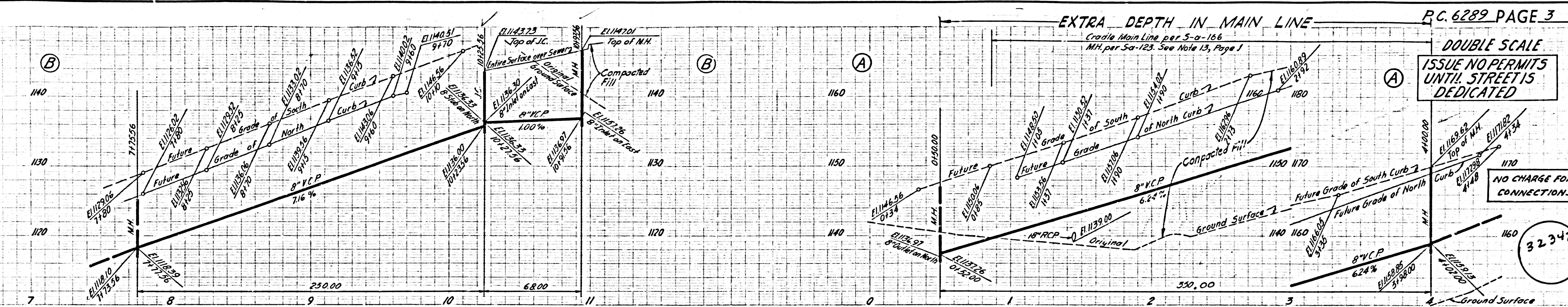


P.C. 6289 PAGE 2

DOUBLE SCALE
 ISSUE NO PERMITS UNTIL STREET IS DEDICATED

NO CHARGE FOR CONNECTIONS

32346



ISSUE NO HOUSE CONNECTION PERMITS BETWEEN STA. 7+50.00 & STA. 8+19.83 UNTIL MAIN LINE IS EXTENDED.