

BENCH MARK:
S.Y. B.M. #3127, L & BN. In Curb Return of
Traffic Island on Artesia Blvd. ± 65' West
of & Avalon Blvd.
EL = 44.325 GARDENA QUAD.

LENNOX BLDG. DIST. NO. 7

PROFILE ALIGNMENT AND GRADE OF P.C. 6290
SANITARY SEWERS PAGE 1
TO BE CONSTRUCTED IN J.M. 0358.63

TRACT NO. 27387

PRIVATE CONTRACT NO. 6290

W.S. 26
5 SHEETS, 10 PAGES

33112

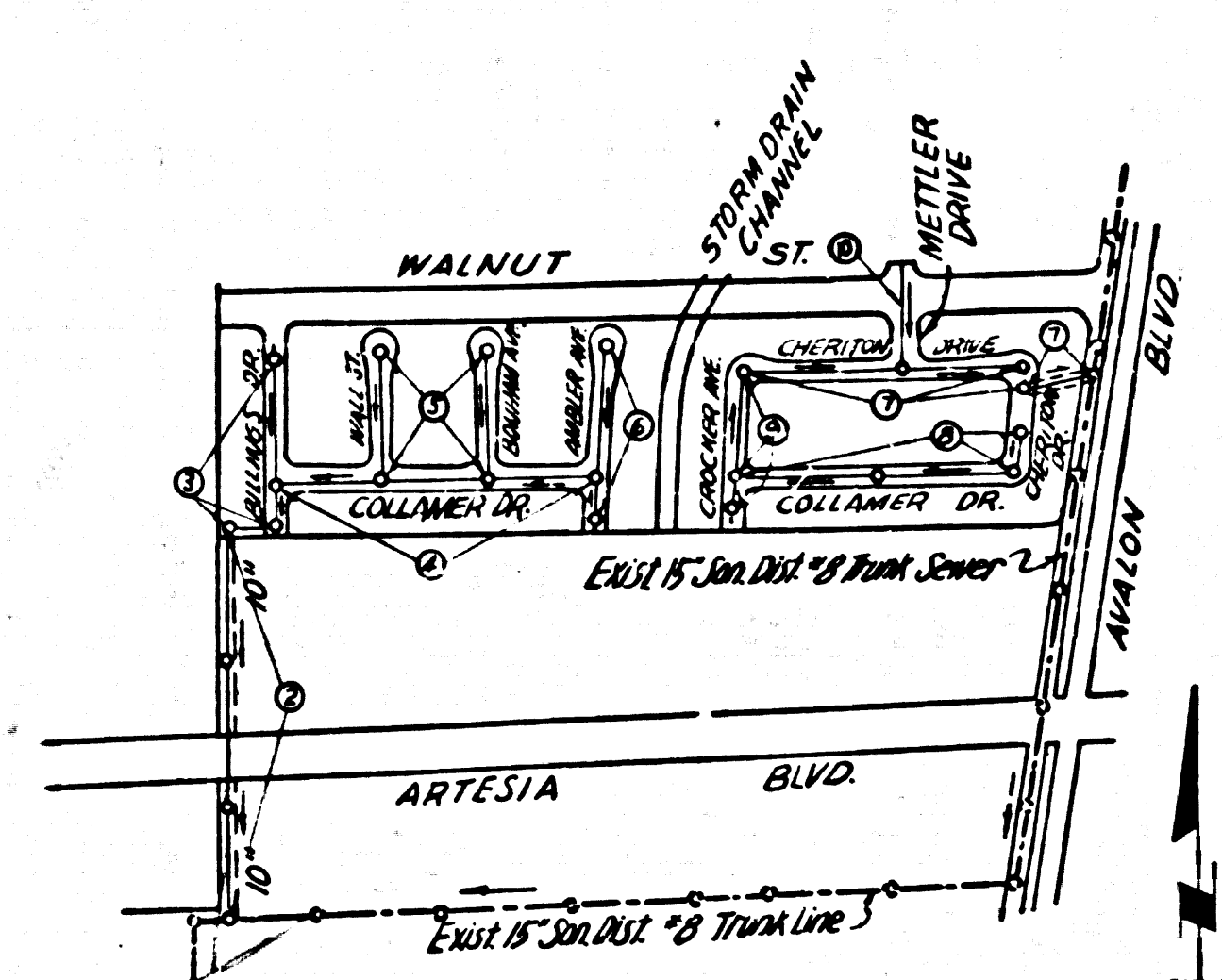
SCALE: VERT. 1" = 4' HORIZ. 1" = 40' JUNE, 1962

PREPARED IN THE OFFICES OF

ENGINEERING SERVICE CORPORATION

By: E. B. Xerig REG. C. E. NO. 3692

FOR LEGEND SEE PLAN NO. S-A-64



INDEX MAP
TRACT NO 27387
SCALE: 1" = 600'
P.C. 6290

ENGINEER'S
NOTICE TO CONTRACTOR

THE EXTENT AND LOCATION OF ANY UNDERGROUND UTILITY PIPES OR STRUCTURES SHOWN ON THESE PLANS ARE OBTAINED BY A SEARCH OF THE AVAILABLE RECORDS. TO THE BEST OF OUR KNOWLEDGE THERE ARE NO EXISTING UTILITIES EXCEPT AS SHOWN ON THIS MAP. THE CONTRACTOR IS REQUIRED TO TAKE PRECAUTIONARY MEASURES TO PROTECT THE UTILITY LINES SHOWN AND ANY OTHER LINES NOT OF RECORD OR NOT SHOWN ON THIS DRAWING.

BEFORE BREAKING INTO ANY EXISTING STRUCTURE AND BEFORE FINAL ACCEPTANCE OF THIS WORK, COUNTY SANITATION DISTRICT (DU 4-1281) SHALL BE NOTIFIED IN ORDER THAT REQUIRED INSPECTION CAN BE MADE.

NO CONNECTIONS FOR THE DISPOSAL OF INDUSTRIAL WASTES SHALL BE MADE TO SEWERS SHOWN ON THESE DRAWINGS WITHOUT WRITTEN PERMISSION FROM THE CHIEF ENGINEER AND GENERAL MANAGER OF THE COUNTY SANITATION DISTRICTS.

NO CHARGE FOR CONNECTIONS
L. C. 7-30-62

NOTES

- PROVIDE STAKES ON THE PROPERTY LINE OR PROPERTY LINES PRODUCED AT RIGHT ANGLES TO THE SEWER LINE AT THE CENTER LINE OF EACH MANHOLE.
- NO REPRESENTATIVE OF THE COUNTY ENGINEER WILL SURVEY OR LAYOUT ANY PORTION OF THE WORK.
- THE OWNER OR HIS AUTHORIZED REPRESENTATIVE SHALL FURNISH THE COUNTY ENGINEER WITH GRADE SHEETS AND STATION FOR ALL HOUSE LATERALS AND Y BRANCHES AND SHALL PROVIDE STAKES FOR THEM AT THEIR PROPER LOCATIONS WITH STATIONING PLAINLY MARKED. ANY CHANGE IN LOCATION SHALL BE REQUESTED IN WRITING BY THE OWNER OR HIS REPRESENTATIVE.
- NO REVISIONS SHALL BE MADE IN THESE PLANS WITHOUT THE APPROVAL OF THE COUNTY ENGINEER.
- USE STANDARD MANHOLE FRAMES AND COVERS, S.A.-117, EXCEPT AS NOTED.
- USE EXTRA STRENGTH PIPE, ALL PIPE IS STANDARD DEPTH EXCEPT AS NOTED.
- USE CEMENT MORTAR OR MECHANICAL COMPRESSION JOINTS FOR V.C.P. PER S.A. 117, CASE I, SECS. 58, 59, 60 & 61 USE MECHANICAL COMPRESSION JOINTS FOR ALL V.C.P. HOUSE LATERALS PER SPEC. 58, 59, 60 & 61.
- RESURFACE ALL TRENCH WITHIN PAVED AREA TO MEET L.A. COUNTY ROAD DEPT. OR CALIF. STATE HIGHWAY REQUIREMENTS IN ACCORDANCE WITH PERMITS.
- ENCASE FOUR FEET OF SEWER AT POINTS OF INTERFERENCE WITH POLES, S.A.-172, CASE III.
- HOUSE LATERALS TO BE CONSTRUCTED WITH INVERTS AT PROPERTY LINE 6 INCHES BELOW CURB GRADE.
- ALL STRUCTURES SHALL BE BRICK SEWER STRUCTURES, S.A. 104, PRECAST REINFORCED CONCRETE MANHOLES PER S.A. 115 OR 34173 MAY BE USED AS AN ALTERNATE IN LOCATIONS APPROVED BY THE COUNTY ENGINEER.
- FOR ALLOWABLE LEAKAGE TEST USE FORMULA, NO. 1, SPEC. 54.
- MANHOLE TOPS IN UNIMPROVED RIGHTS-OF-WAY TO BE 4" ABOVE FINISHED GRADE, EXCEPT AS NOTED.
- THE PRIVATE ENGINEER IS TO FURNISH THE HOUSE LATERAL DEPTH AT THE PROPERTY LINE BELOW THE TOP OF CURVE ELEVATION FOR EACH HOUSE LATERAL ON THE GRADE SHEET.
- THE CONTRACTOR SHALL NOTIFY THE CONSTRUCTION DIVISION BY TELEPHONE, MADISON 9-4747, EXT. B1351AT LEAST 24 HOURS BEFORE STARTING ANY WORK UNDER THIS CONTRACT.
- SPECIFICATIONS DATED MAY 25, 1962 APPLY IN THE CONSTRUCTION OF THIS PROJECT.
- (A) NO CONSTRUCTION WILL BE PERMITTED IN FILLED AREA UNLESS ACCEPTABLE CERTIFICATION IS SUBMITTED TO THE CONSTRUCTION DIVISION OF THE COUNTY ENGINEER'S OFFICE THAT BRIDGE CONSTRUCTION IS GREATER THAN 10% OF THE AREA TO BE FILLED.
(B) IF CONSTRUCTION IS LESS THAN 10% THE SEWER MUST BE COVERED AS SHOWN ON THE PLANS PER S.A. 117.
(C) IF CONSTRUCTION IS 10% OR GREATER COVERING IS NOT REQUIRED UNLESS MECHANICAL COMPRESSION JOINTS MUST BE SUBSTITUTED FOR CEMENT MORTAR FOR ALL JOINTS IN FILLED AREAS. IF CONSTRUCTION IS 50% OR GREATER SPECIAL M.H. BASES ARE NOT REQUIRED.

ENGINEERING SERVICE CORPORATION				
1127 W. WASHINGTON BLVD.				
LOS ANGELES 15, CALIF. RI. 9-7281				
REVISIONS		TRACED BY E.S.		
		DES'GD BY F.K.K.		
		CK'D BY C.M.P.		
		SUBMITTED		
SUB STRUCTURES OK'D				
W. O. NO.	DWG. NO.	DATE	SCALE	L. B. P. B.
5950-144		JUNE 1962	AS NOTED	9/3 L.L.

NOTE: GRADES TO WHICH THIS IMPROVEMENT IS TO BE CONSTRUCTED ARE SHOWN ON PLANS AND PROFILES. GRADE POINTS FOR TOP OF CURBS, CENTER LINE OF STREETS, OR CENTER LINE OF ALLEYS ARE SHOWN BY CIRCLES ON PROFILES. AT ALL POINTS BETWEEN DESIGNATED POINTS THE GRADE SHALL BE ESTABLISHED SO AS TO CONFORM TO A STRAIGHT LINE DRAWN BETWEEN SAID DESIGNATED POINTS. ELEVATIONS ARE IN FEET ABOVE U.S.C. P.O.S. SEA LEVEL DATUM OF 1929. THIS DRAWING AND THE DATA HEREON ARE HEREBY MADE A PART OF THE SPECIFICATIONS. WORK SHALL BE CONSTRUCTED ACCORDING TO SPECIFICATIONS ON FILE IN THE OFFICE OF THE COUNTY ENGINEER AND SHALL BE PROSECUTED ONLY IN THE PRESENCE OF THE COUNTY ENGINEER. BEFORE WORK CAN BE STARTED, THE CONTRACTOR MUST OBTAIN A PERMIT TO EXCAVATE IN COUNTY STREETS FROM THE L.A. COUNTY ROAD DEPT., DISTRICT OFFICE 4423 AND PAY A FEE TO THE COUNTY ENGINEER, ROOM 300 COUNTY ENGINEER BUILDING, 100 N. 2ND STREET, SUFFICIENT TO COVER THE COST OF CONSTRUCTION INSPECTION AND RECORD PLANS. APPROVAL OF THIS PLAN BY THE COUNTY OF LOS ANGELES DOES NOT CONSTITUTE A REPRESENTATION AS TO THE ACCURACY OF THE LOCATION OF OR THE EXISTENCE OR NON-EXISTENCE OF ANY UNDERGROUND UTILITY PIPE, OR STRUCTURE WITHIN THE LIMITS OF THIS PROJECT. THIS NOTE APPLIES TO ALL PAGES. IF WORK IS TO BE DONE IN A STATE HIGHWAY, A PERMIT MUST BE OBTAINED FROM THE STATE OF CALIFORNIA, DIVISION OF HIGHWAYS, 120 SOUTH SPRING STREET.

COUNTY OF LOS ANGELES, CALIFORNIA

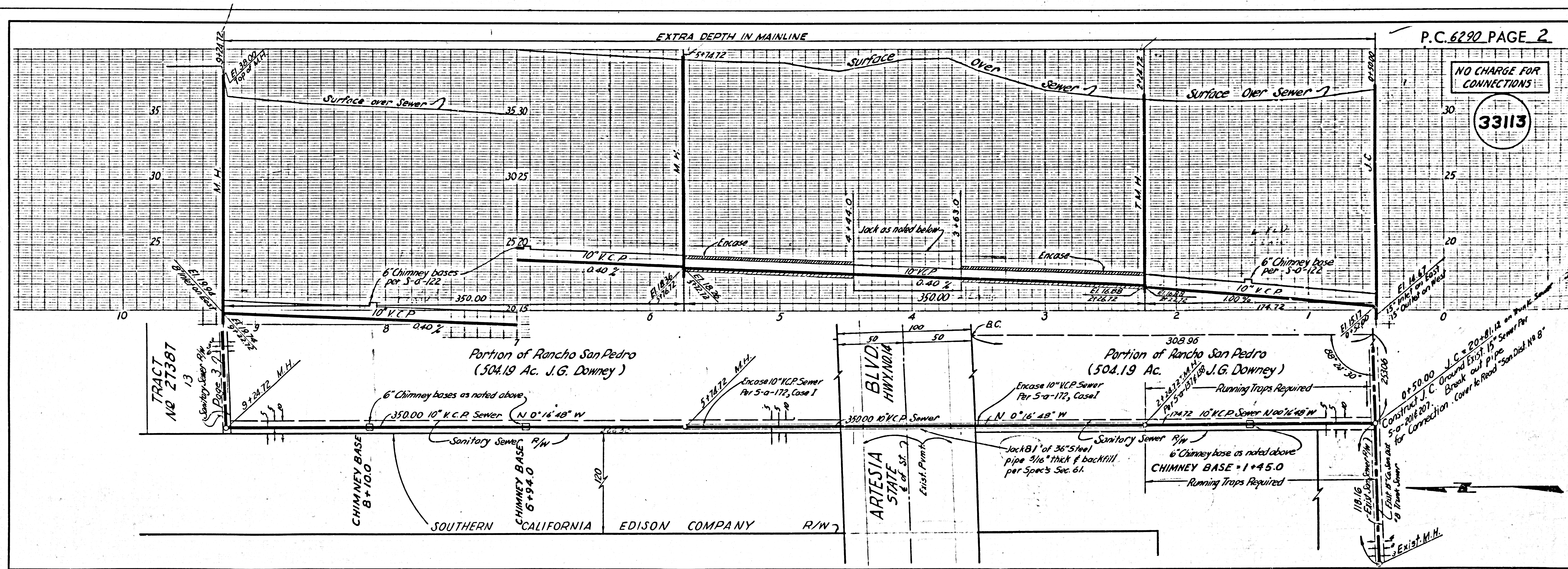
APPROVED, JOHN A. LAMBIE, COUNTY ENGINEER APPROVED, J. D. PRINHAUDT, CHIEF ENGINEER

BY: E. B. Xerig, SANITATION ENGINEER BY: J. D. Prinhaudt, CHIEF ENGINEER

CHECKED BY: J. K. Wadsworth, CHIEF ENGINEER

OFFICE OF COUNTY ENGINEER, REG. C. E. NO. 3692

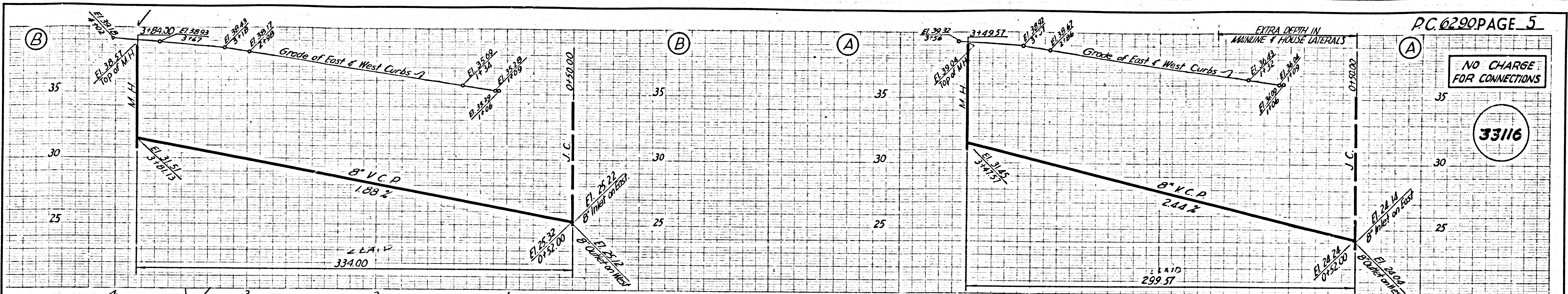
SUBMITTED: Jack C. Lansing, PALOS VERDES-CENTINELA VALLEY REGIONAL ENGINEER



P.C. 6290 PAGE 2

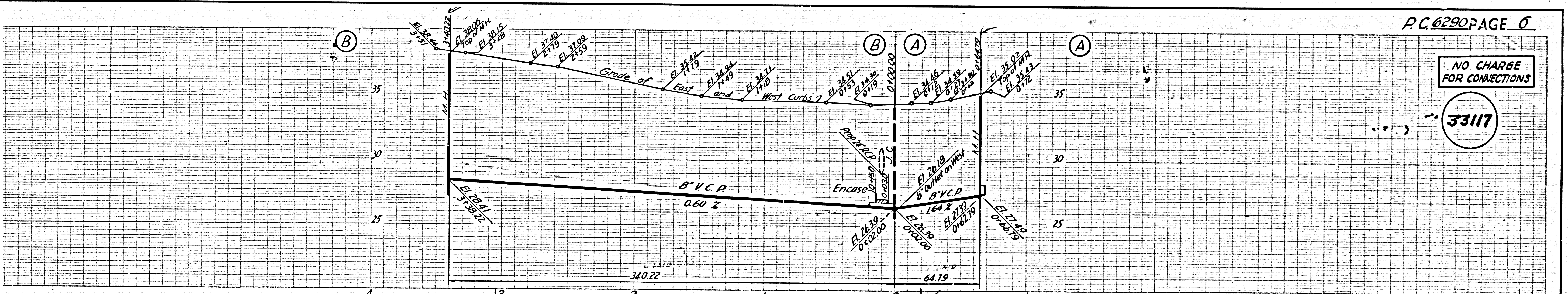
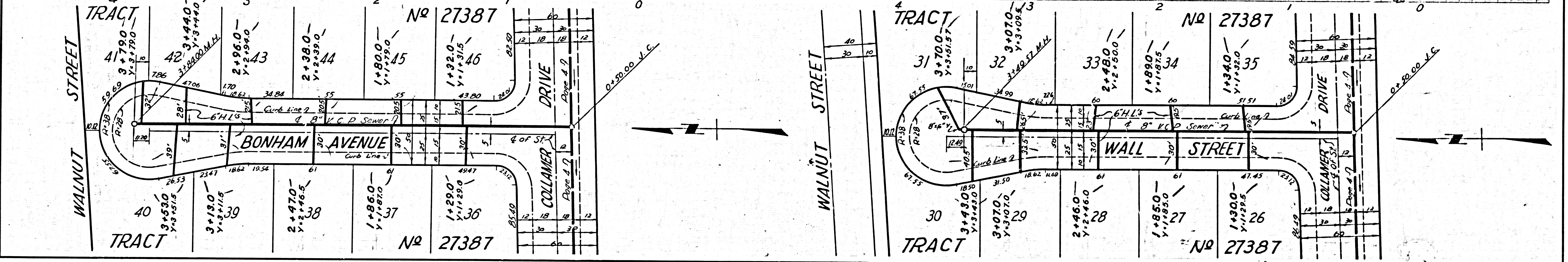
NO CHARGE FOR CONNECTIONS

33113



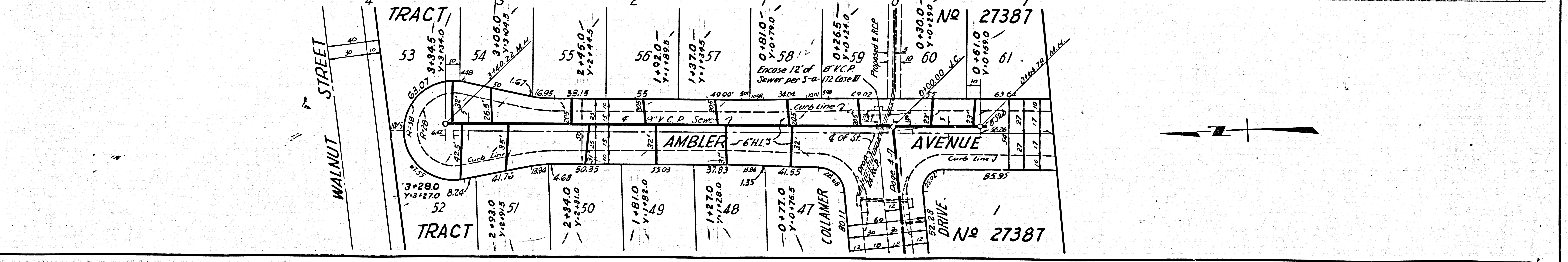
NO CHARGE FOR CONNECTIONS

33116



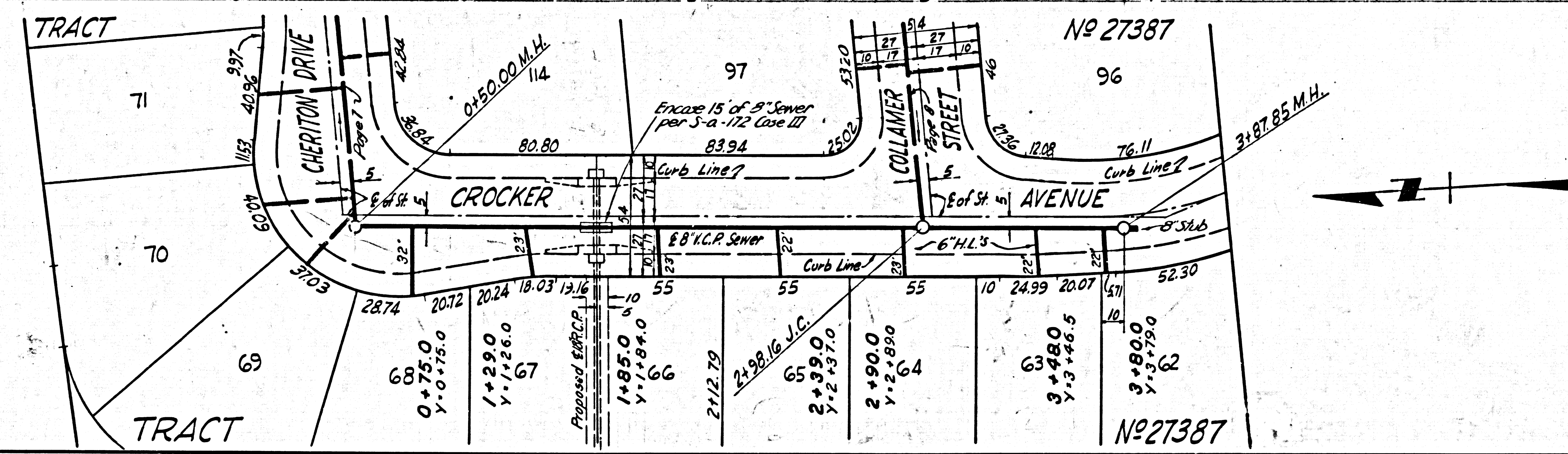
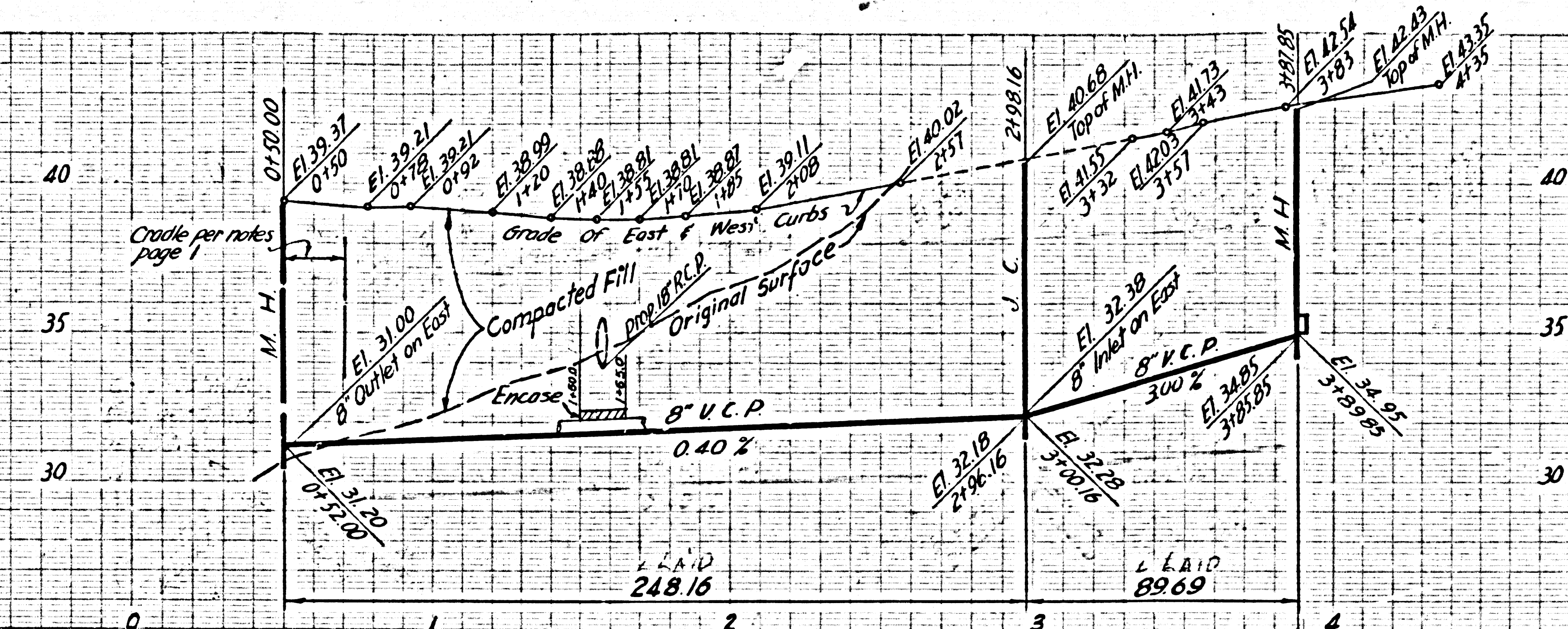
NO CHARGE FOR CONNECTIONS

33117



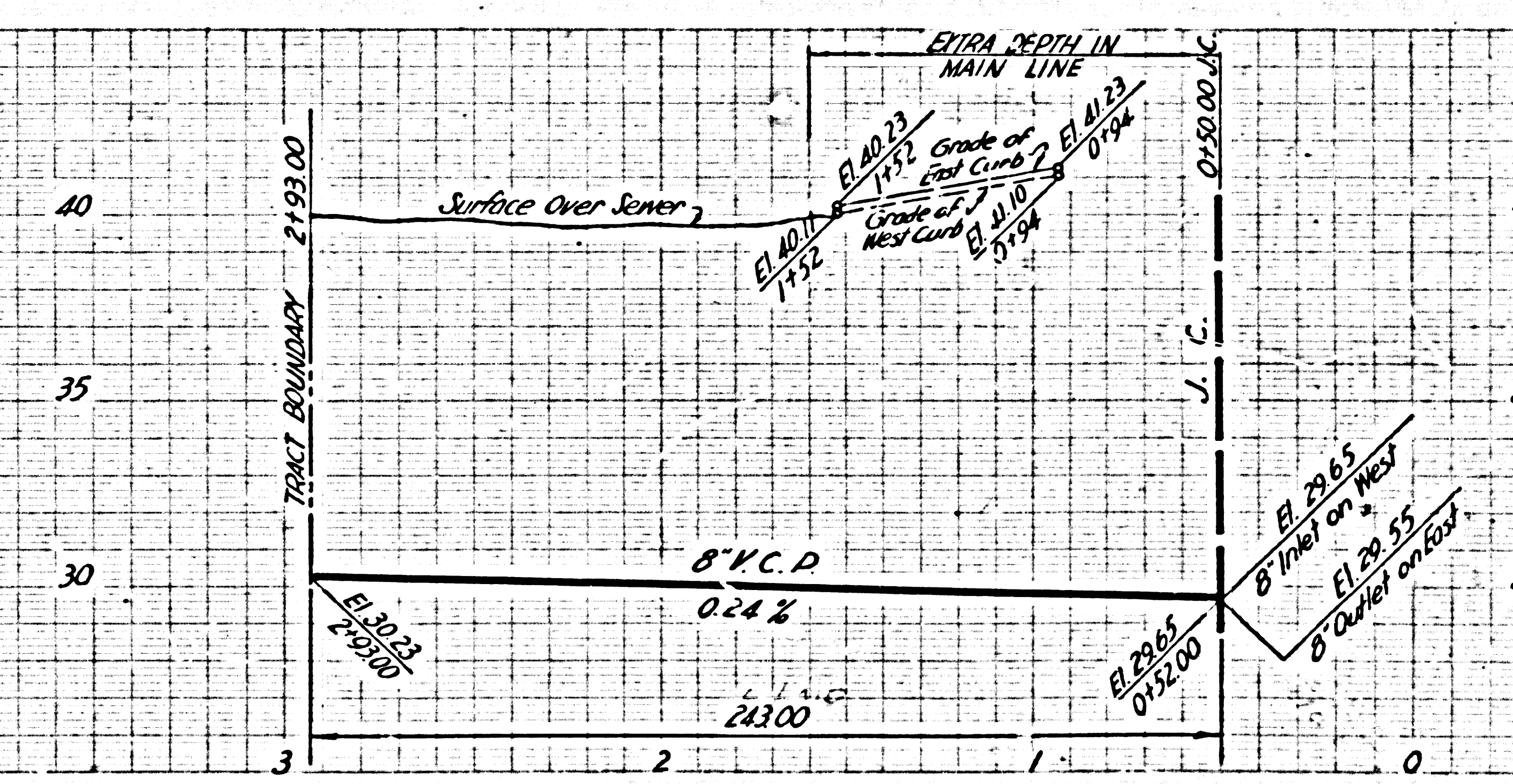
NO CHARGE FOR CONNECTIONS

33120



NO CHARGE FOR CONNECTIONS

33121



ISSUE NO PERMITS UNTIL MAIN LINE IS EXTENDED

