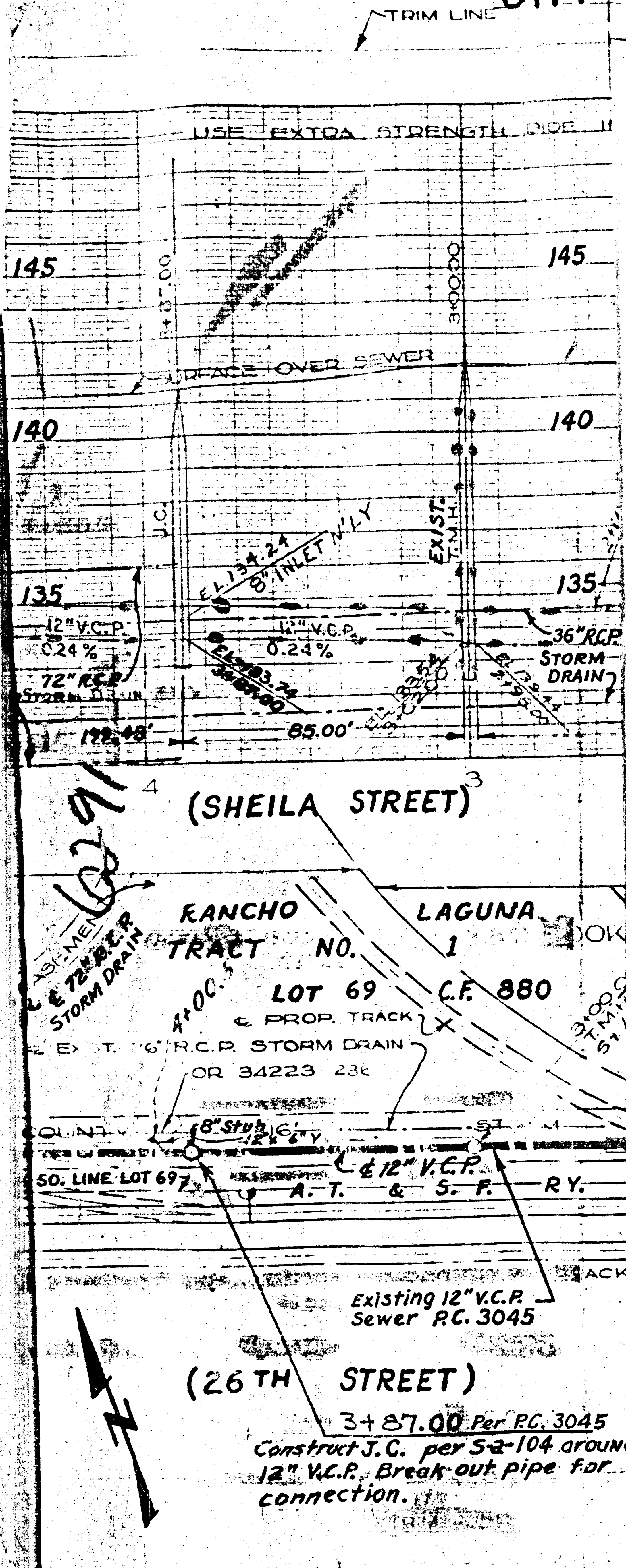


# CITY OF COMMERCE BLDG. DIST. NO 6.01



**NOTES:**

1. Provide stakes on the property line or property lines produced at right angles to the sewer line at the center line of each manhole.
2. No representative of the City Engineer will survey or lay out any portion of the work.
3. No revisions shall be made in these plans without the approval of the City Engineer.
4. Use standard manhole frames and covers, S-a-117
5. Manholes shall be brick sewer structures per S-a-104. ~~Best concrete manholes per S-a-135 or S-a-173 may be used as alternate in locations approved by the City Engineer.~~
6. Manhole tops in unimproved rights-of-way to be six inches above finished grade.
7. The contractor shall notify the Construction Division by telephone, Madison 9-1747, Ext. 81551, at least twenty-four hours before starting any work under this contract.
8. Standard specifications dated May 25, 1962 apply in the construction of this project.

**NOTE:**

Elevations are in feet above U.S.C. & G.S. sea level datum of 1929. This drawing and the data hereon are hereby made a part of the specifications. Work shall be constructed according to specifications on file in the office of the City Engineer and shall be prosecuted only in the presence of the City Engineer. Approval of this plan by the City of Commerce does not constitute a representation as to the accuracy of the location of or the existence or non-existence of any underground utility pipe, or structure within the limits of this project. This note applies to all pages.

CITY OF COMMERCE, CALIFORNIA

APPROVED, JOHN A. LAMBIE,  
City Engineer

JOHN D. PARKHURST  
Chief Engineer

BY E. H. Hughes  
Ass't. Sanitation Engineer

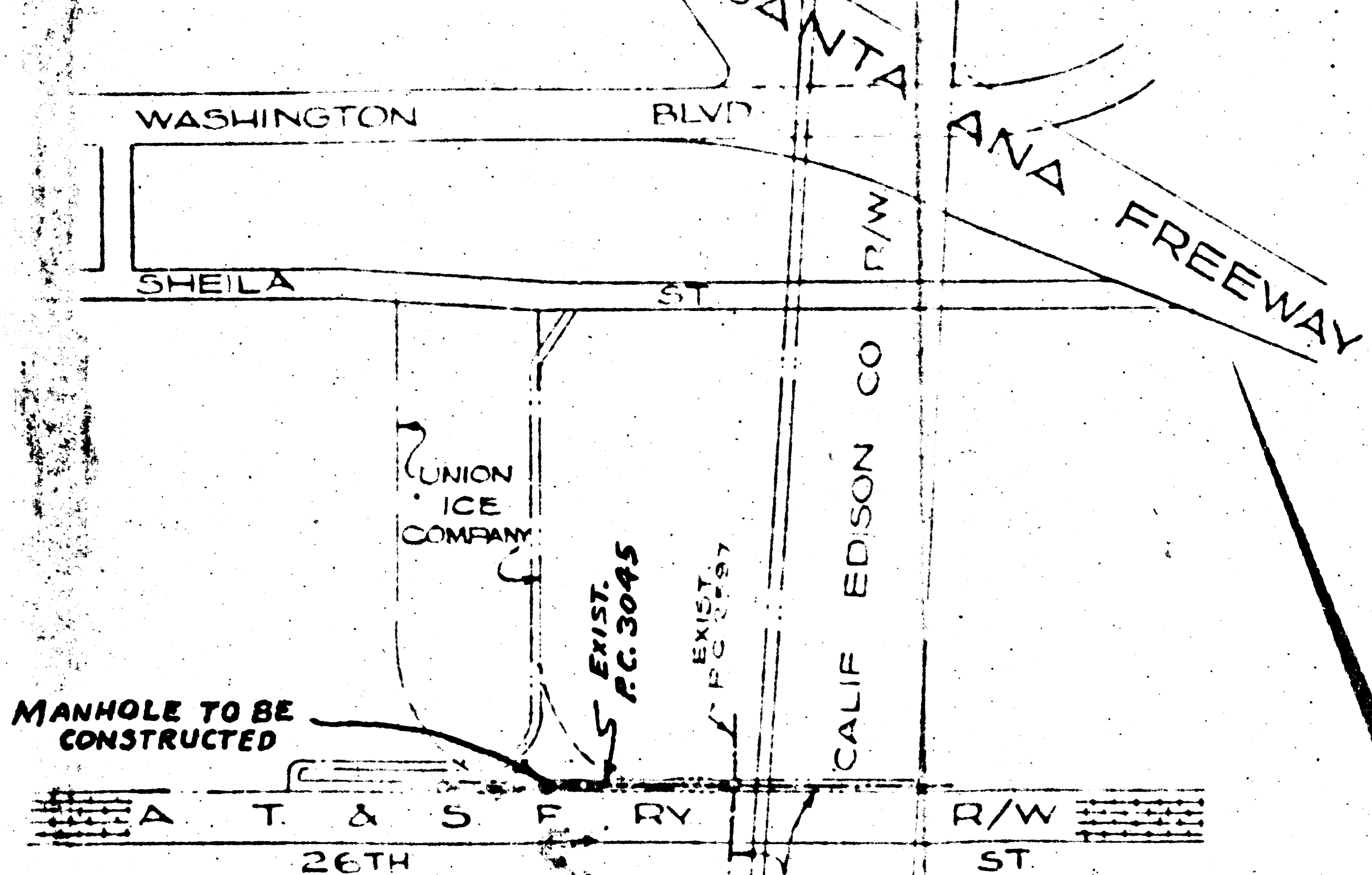
BY P. A. Burnett  
Office Engineer

CHECKED BY St. Jada 7-26-62  
Office of City Engineer, Reg. C.E. No. 7466

SUBMITTED: N. F. Brauender  
SAN GABRIEL VALLEY REGIONAL ENGINEER

APPROVED: Edward L. Thompson DATE: 7-24-62  
INDUSTRIAL WASTE DIVISION

NO CHARGE FOR CONNECTION  
R. Pearce 7/23/62



B.M. ELEV 148.560 S.D. 2125  
F.B. 2524-26  
INT. GARFIELD AVE. @ E. 26TH ST.  
S.E. CORNER BT. SPK. IN CURB 5' EAST  
OF EAST END OF CURB RETURN

INDEX MAP  
SCALE 1" = 500'  
P.C. 6291

PROFILE, ALIGNMENT AND GRADE OF  
SANITARY SEWER MANHOLE  
To Be Constructed  
IN  
R/W S/O SHEILA STREET  
PRIVATE CONTRACT NO. 6291  
SHEET 1 OF 1 SHEET

36237

SCALE: Vert. 1" = 4'  
Horiz. 1" = 40'

July 18, 1962

BY E. H. Brown  
Integrated, Inc.

Reg. C. E. No. 7448

D C S E T

20