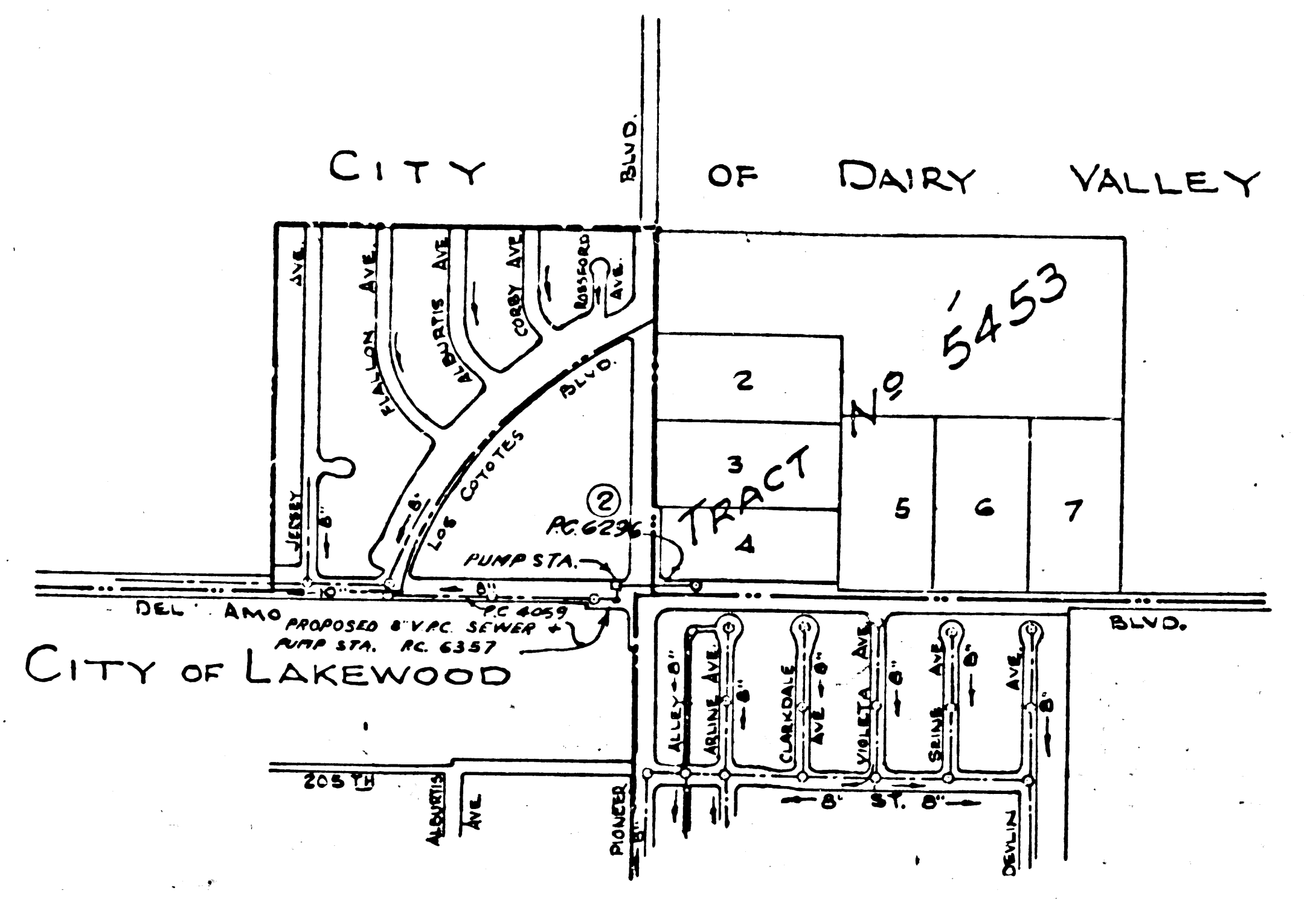


DAIRY VALLEY BLDG. DIST. NO. 4.02

PROFILE ALIGNMENT AND GRADE OF
SANITARY SEWERS PAGE 1
 TO BE CONSTRUCTED IN
DEL AMO BLVD.

PRIVATE CONTRACT NO. 6296
 W.S. 31
 SHEET 1 OF 2 PAGES
 SCALE: VERT. 1"=4' HORIZ. 1"=40'
 AUG. 1962
 PREPARED IN THE OFFICES OF
TECHNOLOGICAL ENGINEERING CORP.
 By *J. A. Montgomery*
 REG. C. E. NO. 9137
 FOR LEGEND SEE PLAN NO. S-A-44



INDEX MAP
 SCALE: 1"=600'
 P.C. NO. 6296

ISSUE NO PERMITS UNTIL P.C. 6357 IS ACCEPTED.

- NOTES:
1. PROVIDE STAKES ON THE PROPERTY LINE OR PROPERTY LINES PRODUCED AT RIGHT ANGLES TO THE SEWER LINE AT THE CENTER LINE OF EACH MANHOLE.
 2. NO REPRESENTATIVE OF THE CITY, ENGINEER WILL SURVEY OR LAY OUT ANY PORTION OF THE WORK.
 3. THE OWNER OR HIS AUTHORIZED REPRESENTATIVE SHALL FURNISH THE CITY ENGINEER WITH GRADE SHEETS AND STATIONING FOR ALL HOUSE LATERALS AND Y BRANCHES AND SHALL PROVIDE STAKES FOR THEM AT THEIR PROPER LOCATIONS WITH STATIONING PLAINLY MARKED. ANY CHANGE IN LOCATION SHALL BE REQUESTED IN WRITING BY THE OWNER OR HIS REPRESENTATIVE.
 4. THE PRIVATE ENGINEER SHALL FURNISH THE HOUSE LATERAL DEPTH AT THE PROPERTY LINE BELOW THE TOP OF CURB ELEVATION FOR EACH HOUSE LATERAL ON THE GRADE SHEET.
 5. NO REVISIONS SHALL BE MADE IN THESE PLANS WITHOUT THE APPROVAL OF THE CITY ENGINEER.
 6. USE STANDARD MANHOLES: FRAMES AND COVERS, 5-117, EXCEPT AS NOTED.
 7. USE EXTRA STRENGTH PIPE ALL PIPE IS EXTRA C DEPTH.
 8. USE MECHANICAL COMPRESSION JOINTS FOR ALL V.C.P. JOINTS IN MAIN LINE SEWERS PER SPECS, SEC 36 AND 48.
 9. RESURFACE ALL TRENCH WITHIN PAVED AREA TO MEET L.A. COUNTY ROAD DEPT. OR CALIF. STATE HIGHWAY REQUIREMENTS IN ACCORDANCE WITH PERMITS.
 10. ENCASE FOUR FEET OF SEWER AT POINTS OF INTERFERENCE WITH POLES, CASE III, 5-117.
 11. HOUSE LATERALS TO BE CONSTRUCTED WITH 1/4" RISE PER FOOT TO PROPERTY LINE.
 12. ALL STRUCTURES SHALL BE BRICK SEWER STRUCTURES, 5-0-106, PRECAST CONCRETE MANHOLES PER S.C. 195 OR S.C. 173 MAY BE USED AS AN ALTERNATE IN LOCATIONS APPROVED BY THE CITY ENGINEER.
 13. FOR ALLOWABLE LEAKAGE TEST USE FORMULA NO. 1, SPECS. SEC. 54.
 14. MANHOLE TOPS IN UNIMPROVED RIGHTS-OF-WAY TO BE SIX INCHES ABOVE FINISHED GRADE.
 15. THE CONTRACTOR SHALL NOTIFY THE CONSTRUCTION DIVISION BY TELEPHONE, MADISON 3-4747, EXT. 81-61 AT LEAST TWENTY-FOUR HOURS BEFORE STARTING ANY WORK UNDER THIS CONTRACT.
 16. STANDARD SPECIFICATIONS DATED MAY 25, 1962, ON FILE IN THE CITY HALL, APPLY IN THE CONSTRUCTION OF THIS PROJECT.
 17. USE MECHANICAL COMPRESSION JOINTS FOR ALL V.C.P. HOUSE LATERALS PER SPECS SEC. 36 AND 49.
 18. ALL STATE AND LOCAL TRENCH SAFETY ORDERS WILL BE RIGIDLY ENFORCED.
 19. CONTRACTOR MUST OBTAIN PERMIT TO EXCAVATE IN CITY OF LAKEWOOD STREETS FROM CITY OF LAKEWOOD.

NO CONNECTIONS FOR THE DISPOSAL OF INDUSTRIAL WASTES SHALL BE MADE TO SEWERS SHOWN ON THESE DRAWINGS WITHOUT WRITTEN PERMISSION FROM THE CHIEF ENGINEER AND GENERAL MANAGER OF THE COUNTY SANITATION DISTRICTS.

NO CHARGE FOR CONNECTIONS
John D. Roe

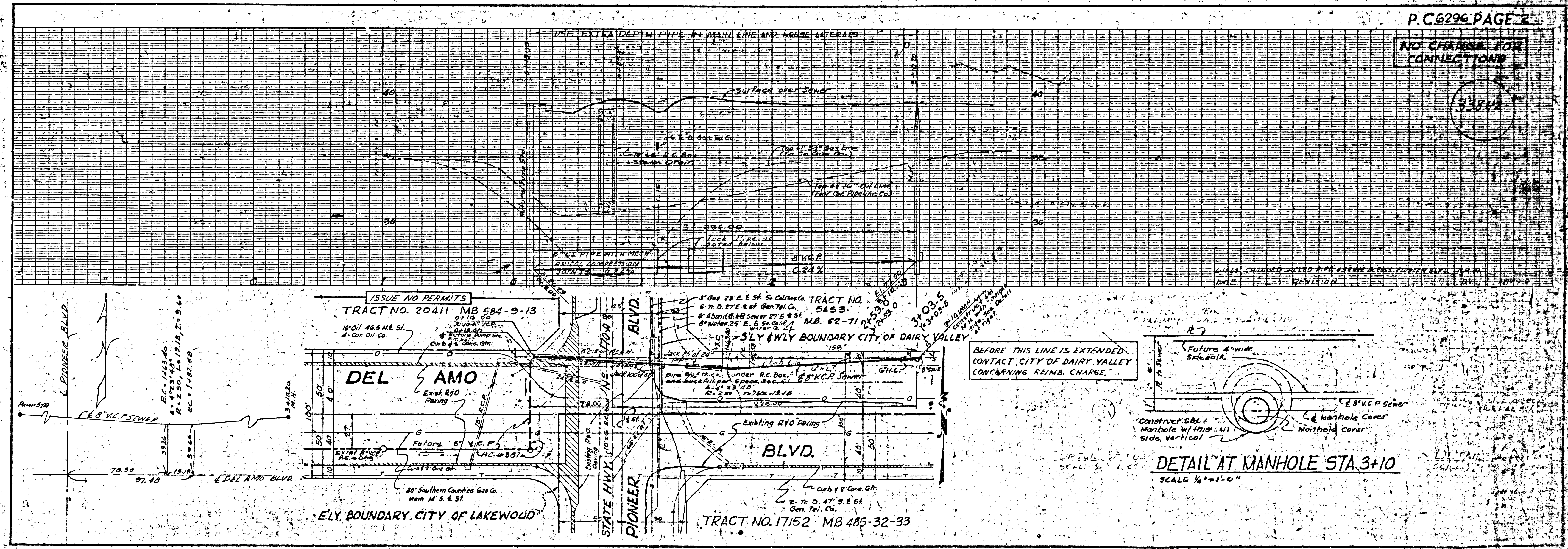
REVISION: 7-26-63
 EQUALIZE MAIN LINE SEWER STR 0+15 TO 3+10
 APPROVED: *John D. Roe*
 REG. C. E. NO. 3571, 1976

DATE	REVISIONS TO SEWER LINE	BY	APPROVED BY
6-17-63		<i>John D. Roe</i>	APPROVED FOR CO. SAN. DIST. NO. 19

NOTE:
 GRADES TO WHICH THIS IMPROVEMENT IS TO BE CONSTRUCTED ARE SHOWN ON PLANS AND PROFILE. GRADE POINTS FOR TOP OF CURBS, CENTER LINE OF STREETS, OR CENTER LINE OF ALLEYS ARE SHOWN BY CIRCLES OR PROFILES AT POINTS BETWEEN DESIGNATED POINTS THE GRADE SHALL BE ESTABLISHED SO AS TO CONFORM TO A STRAIGHT LINE DRAWN BETWEEN SAID DESIGNATED POINTS.
 ELEVATIONS ARE IN FEET ABOVE U.S.C. & G.S. SEA LEVEL DATUM OF 1929.
 THIS DRAWING AND THE DATA HEREON ARE HEREBY MADE A PART OF THE SPECIFICATIONS.
 WORK SHALL BE CONSTRUCTED ACCORDING TO SPECIFICATIONS ON FILE IN THE OFFICE OF THE CITY ENGINEER AND SHALL BE PROSECUTED ONLY IN THE PRESENCE OF THE CITY ENGINEER.
 BEFORE WORK CAN BE STARTED, THE CONTRACTOR MUST OBTAIN A PERMIT TO EXCAVATE IN CITY STREETS FROM THE L.A. COUNTY ROAD DEPT., DISTRICT OFFICE NO. 4, AND MAKE A DEPOSIT WITH THE CITY ENGINEER, CITY OF DAIRY VALLEY, 19406 S. PIONEER BLVD., SUFFICIENT TO COVER THE COST OF CONSTRUCTION INSPECTION AND RECORD PLANS.
 APPROVAL OF THIS PLAN BY THE CITY OF DAIRY VALLEY DOES NOT CONSTITUTE A REPRESENTATION AS TO THE ACCURACY OF THE LOCATION OF OR THE EXISTENCE OR NON-EXISTENCE OF ANY UNDERGROUND UTILITY PIPE, OR STRUCTURE WITHIN THE LIMITS OF THIS PROJECT. THIS NOTE APPLIES TO ALL PAGES.
 IF WORK IS TO BE DONE IN A STATE HIGHWAY, A PERMIT MUST BE OBTAINED FROM THE STATE OF CALIFORNIA, DIVISION OF HIGHWAYS, 120 SOUTH SPRING STREET.

CITY OF DAIRY VALLEY, CALIFORNIA
 APPROVED, JOHN A. LAMBIE, CITY ENGINEER APPROVED, J.B. PARKHURST, CHIEF ENGINEER
 BY: *John D. Roe* SANITATION ENGINEER BY: *John A. Lambie* CHIEF ENGINEER
 CHECKED BY: *SK Wanda* OFFICE ENGINEER
 OFFICE OF CITY ENGINEER, REG. E. NO. 2906

SUBMITTED BY: *John D. Roe* 11-20-62
 LOS CERITOS REGIONAL ENGINEER REG. C.E. NO. 3871



P.C. 6296 PAGE 2

NO CHARGE FOR CONNECTIONS

BEFORE THIS LINE IS EXTENDED CONTACT CITY OF DAIRY VALLEY CONCERNING REIMB. CHARGE.

DETAIL AT MANHOLE STA. 3+10
 SCALE 1/4"=1'-0"